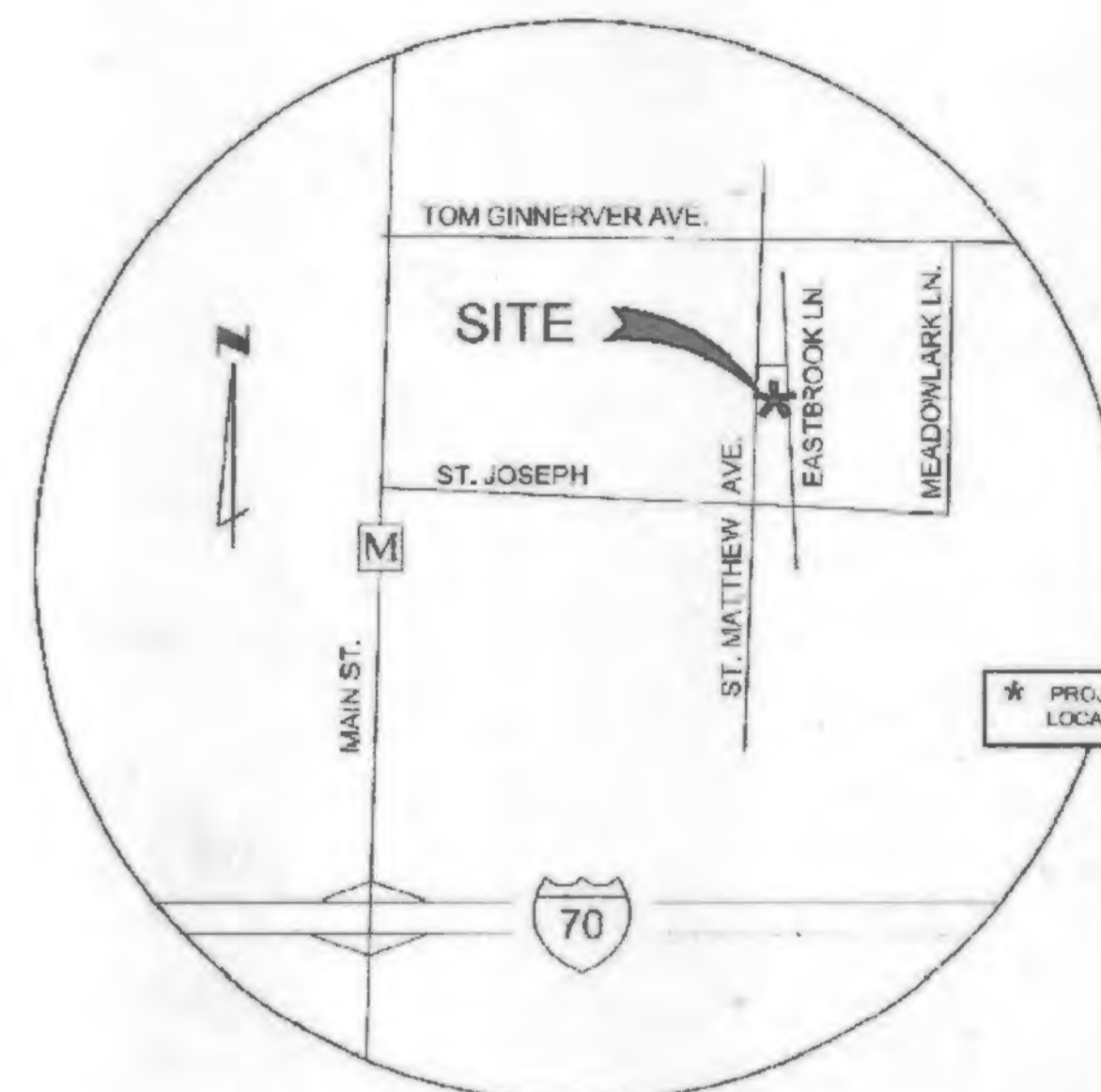
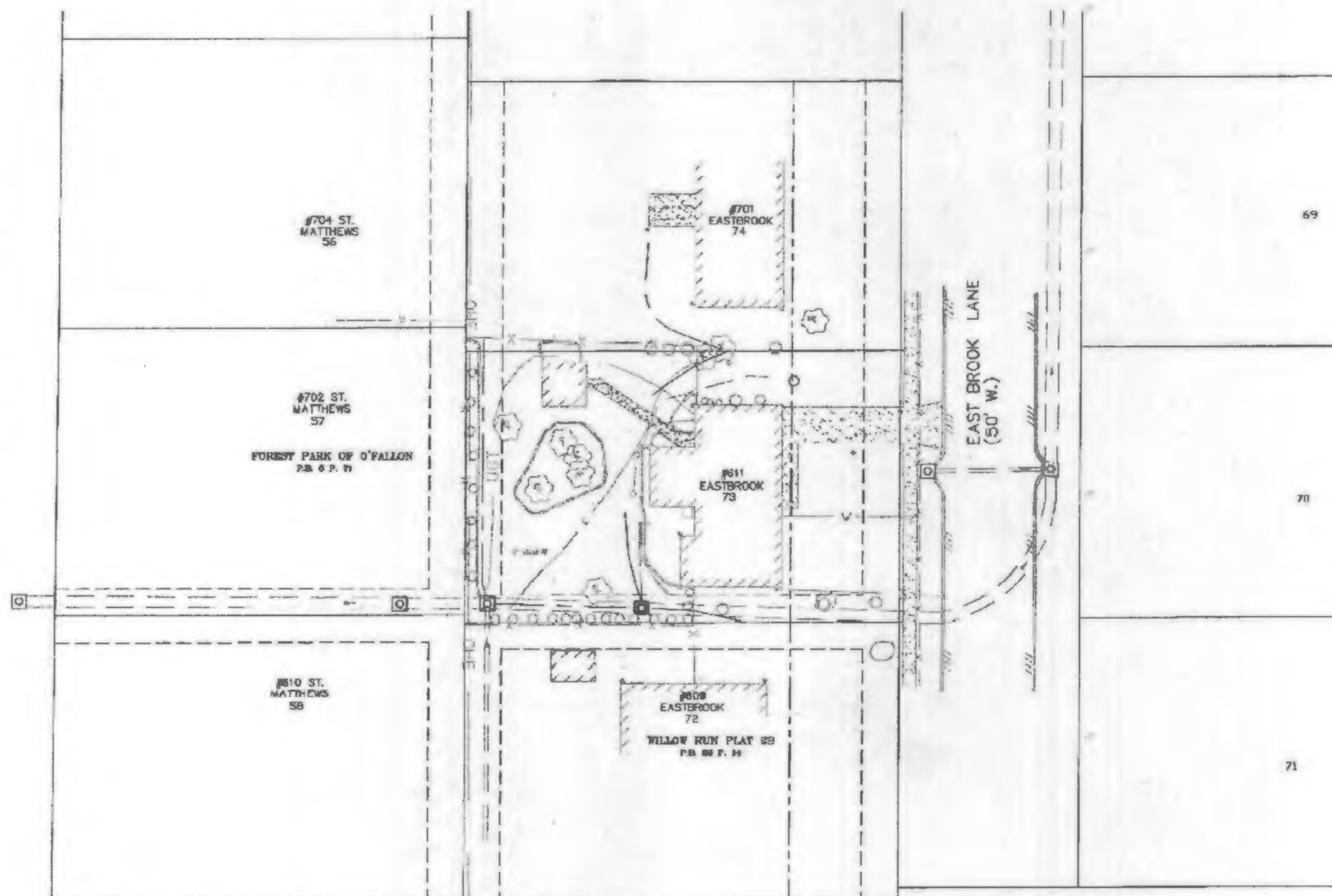


CITY OF O'FALLON MO

PUBLIC DRAINAGE IMPROVEMENTS @ 611 EASTBROOK

LEGEND

EXISTING		NEW
○	MANHOLE	●
□	INLET	■
□	DOUBLE INLET	■
—	PIPE	—
—	FENCE	—
—	GAS LINE	—
—	ELECTRIC LINE	—
—	WATER LINE	—
—	TELEPHONE LINE	—
—	INDEX CONTOUR	—
—	CONTOUR	—
—	FLOWLINE OF CREEK OR DITCH	—
—	GUARD RAIL	—
+	TREE	+
+	BUSH	+
—	HEDGE ROW	—
CV	UTILITY METER OR VALVE	CV
PP	POWER POLE	PP
PP	POWER POLE & GUY	PP
+	STREET SIGN	+
+	FIRE HYDRANT	+
+	LIGHT STANDARD	+
+	MAIL BOX	+
+	HOUSE VENT	+
+	TRAFFIC SIGNAL	+
+	UTILITY BOX	+
+	CONTROL POINT/TRaverse POINT	+
+	CONTROL POINT DESIGNATOR	+
+	TRaverse POINT DESIGNATOR	+
+	TEST HOLE	+
512.51	EXISTING GRADE	512.51
X514.5	PROPOSED GRADE	X514.5
D.S.	DOWN SPOUT (PRIVATE)	D.S.
—	TRENCH DRAIN (PRIVATE)	—
○	AREA DRAIN (PRIVATE)	○
○	CORRUGATED PLASTIC PIPE	○
MBW	MODULAR BLOCK WALL	MBW
PROTECT	TREE TO BE PROTECTED	PROTECT
PVC	POLYVINYL CHLORIDE PIPE	PVC
RCP	REINFORCED CONCRETE PIPE	RCP
TBA	TO BE ABANDONED	TBA
TBR	TO BE REMOVED	TBR
TBR&R	TO BE REMOVED AND REPLACED	TBR&R
TYP	TYPICAL	TYP
UIP	USE IN PLACE	UIP



LOCATION MAP
NOT TO SCALE

INDEX

SHEET NO.	DESCRIPTION
1	COVER SHEET
2	SITE PLAN
3	DETAILS & NOTES
4	SWALE PROFILES



SURVEYORS NOTES:

THE BACKGROUND DRAWING THAT THIS AS-BUILT SURVEY IS BASED, HAS BEEN PROVIDED BY OTHERS. WE HAVE ADDED AS-BUILT SEWER INFORMATION TO THIS DRAWING FROM FIELD OBSERVATIONS AND ONLY CLAIM RESPONSIBILITY OF ACCURACY AND INFORMATION FOR THE AS-BUILT DATA REPORTED HEREON.

ELEVATIONS AND STATE PLANE COORDINATE VALUES SHOWN ARE ON U.S.G.S. DATUM AND HAVE BEEN DERIVED FROM GPS OBSERVATION USING THE MISSOURI DEPARTMENT OF TRANSPORTATION'S GNSS VRS NETWORK, WGS 84, NAVD 88.

STORM AND SANITARY SEWER MEASUREMENTS

THE EXISTING SEWER LENGTHS, SIZES, FLOWLINES, DEPTHS OF STRUCTURES AND SEWERS, AND LOCATIONS WITH RESPECT TO EXISTING OR PROPOSED EASEMENTS HAVE BEEN MEASURED. THE RESULTS OF THOSE MEASUREMENTS ARE SHOWN ON THIS SET OF FINAL MEASUREMENT PLATS. SINCE THE WYE LOCATIONS HAVE BEEN PLOTTED FROM INFORMATION PROVIDED BY THE SEWER CONTRACTOR OR OTHER SOURCES, I DISCLAIM ANY RESPONSIBILITY FOR THAT SPECIFIC INFORMATION.

ALL STRUCTURES AS SHOWN ON THIS AS-BUILT PLAN THAT ARE ON PRIVATE PROPERTY ARE PRIVATE. ALL STRUCTURES IN THE STREET RIGHT OF WAY AND THE METROLINK PROPERTY ARE PUBLIC.

GATEWAY LAND SERVICES, INC. (AGENT) DATE: DECEMBER 14, 2016

SIGNED: *Lee C. Ferrenbach III*
(AGENT) LEE C. FERRENBACH III PLS - 2310
VICE PRESIDENT



Lee C. Ferrenbach III, PLS
License No. PLS-2310

NOTE:

UNDERGROUND FACILITIES, STRUCTURES AND UTILITIES HAVE BEEN PLOTTED FROM AVAILABLE SURVEYS AND RECORDS. THEREFORE, THEIR LOCATIONS MUST BE CONSIDERED APPROXIMATE ONLY. THERE MAY BE OTHERS, THE EXISTENCE OF WHICH IS NOT PRESENTLY KNOWN. IT IS THE RESPONSIBILITY OF THE CONTRACTOR TO HAVE ALL UTILITIES LOCATED IN THE FIELD PRIOR TO EXCAVATION OR CONSTRUCTION.

PROJECT BENCHMARK:

BENCHMARK INFORMATION F-149 NGVD EL=542.88'
SAID TABLET STAMPED F 149 1635, TOP CONCRETE POST, 40 FEET EAST OF MAIN STREET CENTERLINE, 30 FEET NORTH OF CENTERLINE OF MAIN RAILROAD TRACKS.



Eric J. Karch, P.E.
PROFESSIONAL ENGINEER
P.E. No. PE-2007065040
Date: 05/27/2016

THE ENGINEER WHOSE SIGNATURE APPEARS ON THIS DRAWING ASSUMES RESPONSIBILITY ONLY FOR WHAT APPEARS ON THIS PAGE AND DISCLAIMS ALL OTHER RESPONSIBILITY FOR ALL OTHER PAGES, SPECIFICATIONS, DOCUMENTS OR INSTRUMENTS NOT SEALED BY THE INCORPORATED ENGINEER RELATING TO OR ARISING FROM THIS PROJECT IN ANY PART OR PARTS OF THE PROJECT TO WHICH THIS PAGE REFERS.

REITZ & JENS, INC.
CONSULTING ENGINEERS
1928 COOPERATE SQUARE DRIVE
ST. LOUIS, MISSOURI 63102
(314) 884-1332
PROFESSIONAL ENGINEERING CORP. LICENSE #00216
Checked: E.J.K.
Drawn: J.L.B.
Issue: MAY 27, 2016

CITY OF O'FALLON MO
100 North Main St.
O'FALLON, MO 63366
636-240-2000

AS BUILT

PUBLIC DRAINAGE IMPROVEMENTS @ 611 Eastbrook
COVER SHEET

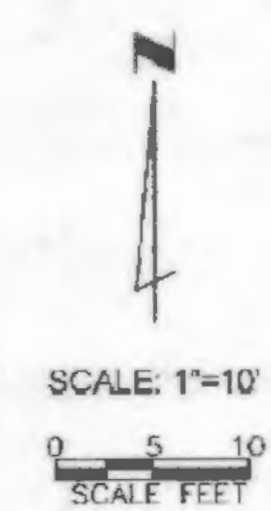
REVISIONS

NO.	DESCRIPTION

BEFORE YOU DIG - DRILL - BLAST
1-800-344-7483
(TOLL FREE)

MISSOURI ONE CALL SYSTEM, INC.

Plotted on: 5/27/2016 5:58:44 PM by ekorch



#704 ST. MATTHEWS 56

#702 ST. MATTHEWS 57

FOREST PARK OF O'FALLON
P.B. 6 P. 71

#610 ST. MATTHEWS 58

#701 EASTBROOK 74

#611 EASTBROOK 73

#609 EASTBROOK 72

WILLOW RUN PLAT 2B
P.B. 22 P. 14

SURVEYORS NOTES:

THE BACKGROUND DRAWING THAT THIS AS-BUILT SURVEY IS BASED, HAS BEEN PROVIDED BY OTHERS. WE HAVE ADDED AS-BUILT SEWER INFORMATION TO THIS DRAWING FROM FIELD OBSERVATIONS AND ONLY CLAIM RESPONSIBILITY OF ACCURACY AND INFORMATION FOR THE AS-BUILT DATA REPORTED HEREON.

ELEVATIONS AND STATE PLANE COORDINATE VALUES SHOWN ARE ON U.S.G.S. DATUM AND HAVE BEEN DERIVED FROM GPS OBSERVATION USING THE MISSOURI DEPARTMENT OF TRANSPORTATION'S GNSS VRS NETWORK, WGS 84, NAVD 88.

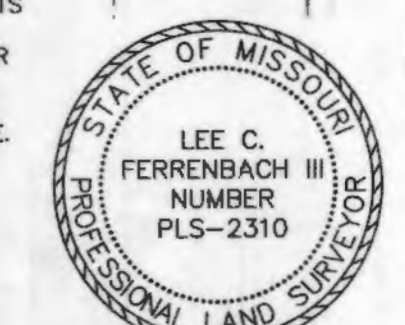
STORM AND SANITARY SEWER MEASUREMENTS

THE EXISTING SEWER LENGTHS, SIZES, FLOWLINES, DEPTHS OF STRUCTURES AND SEWERS, AND LOCATIONS WITH RESPECT TO EXISTING OR PROPOSED EASEMENTS HAVE BEEN MEASURED. THE RESULTS OF THOSE MEASUREMENTS ARE SHOWN ON THIS SET OF FINAL MEASUREMENT PLATS. SINCE THE WYE LOCATIONS HAVE BEEN PLOTTED FROM INFORMATION PROVIDED BY THE SEWER CONTRACTOR OR OTHER SOURCES, I DISCLAIM ANY RESPONSIBILITY FOR THAT SPECIFIC INFORMATION.

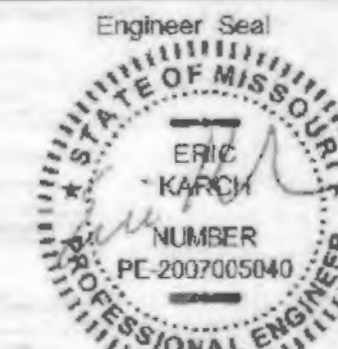
ALL STRUCTURES AS SHOWN ON THIS AS-BUILT PLAN THAT ARE ON PRIVATE PROPERTY ARE PRIVATE. ALL STRUCTURES IN THE STREET RIGHT OF WAY AND THE METROLINK PROPERTY ARE PUBLIC.

GATEWAY LAND SERVICES, INC. (AGENT) DATE: DECEMBER 14, 2016

SIGNED: *Lee C. Ferrenbach III*
(AGENT) LEE C. FERRENBACH III PLS - 2310
VICE PRESIDENT

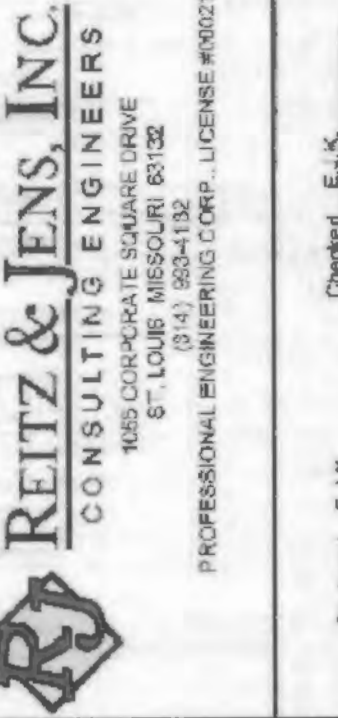


Lee C. Ferrenbach III, P.L.S.
License No: PLS-2310



ERIC J. KARCH, P.E.
PROFESSIONAL ENGINEER
P.E. No. PE-2007005040
Date: 05/27/2016

THE ENGINEER WHOSE SIGNATURE AND PERSONAL SEAL APPEAR ON THIS DRAWING IS THE ONLY ONE WHOSE NAME MAY BE USED IN CONNECTION WITH THIS DRAWING. THE ENGINEER'S LIABILITY IS LIMITED TO THE DESIGN AND CONSTRUCTION OF THE PROJECT DESCRIBED IN THIS DRAWING. THE ENGINEER DOES NOT WARRANT THE ACCURACY OF ANY INFORMATION PROVIDED BY OTHERS. THE ENGINEER'S LIABILITY IS LIMITED TO THE DESIGN AND CONSTRUCTION OF THE PROJECT DESCRIBED IN THIS DRAWING.



REITZ & JENS, INC.
CONSULTING ENGINEERS
100 CORPORATE SQUARE DRIVE
ST. LOUIS, MO 63102
(314) 834-1313

CITY OF O'FALLON MO
100 North Main St.
O'FALLON, MO 63366
636.240.2000

PUBLIC DRAINAGE
IMPROVEMENTS
@ 611 Eastbrook
SITE PLAN

REVISIONS

SHEET 2 OF 4

BEFORE YOU
DIG - DRILL - BLAST
1-800-344-7483
(TOLL FREE)
MISSOURI ONE CALL SYSTEM, INC.

The signed and sealed original of this drawing is on file at the office of Reitz & Jens, Inc. The signed and sealed original is the official document and shall take precedence over any digital version.