

# AS-BUILT UTILITY PLANS ALDI RETAIL FACILITY

8615 VETERANS MEMORIAL PARKWAY  
ST. CHARLES COUNTY, O'FALLON, MISSOURI 63366  
MAY 2007

## ALDI INC.

475 PEARL DRIVE  
P.O. BOX 8800  
O'FALLON, MISSOURI 63366



**ENGINEER:**  
WOOLPERT, INC.  
1910 PINE STREET, SUITE 420  
SAINT LOUIS, MISSOURI 63103  
314.241.3005  
FAX: 314.436.0884

**CONTRACTOR:**  
DON SCHNIERS  
C. JUENGEL CONSTRUCTION  
#16 MUNICIPAL DRIVE, SUITE D  
ARNOLD, MO. 63010

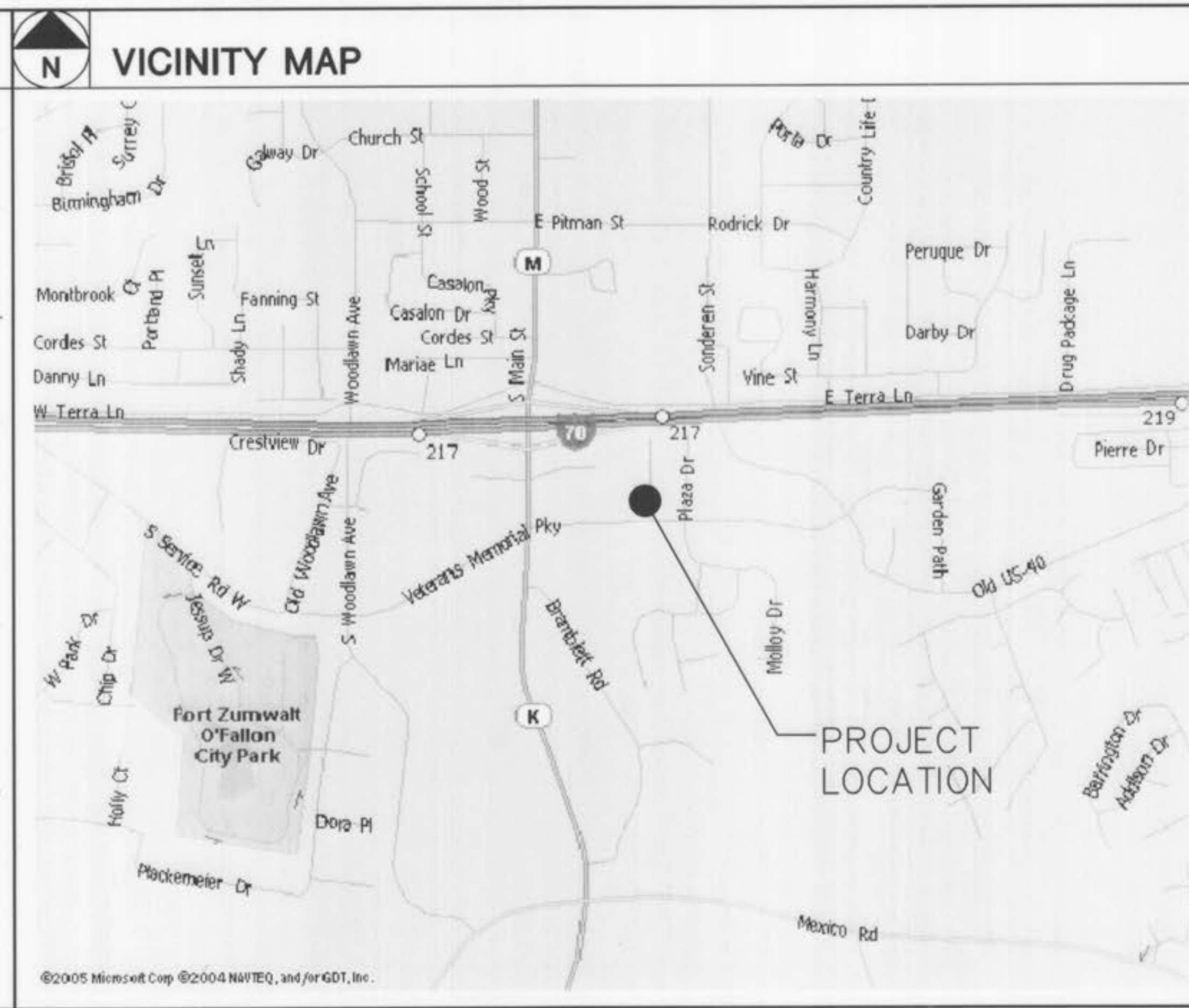
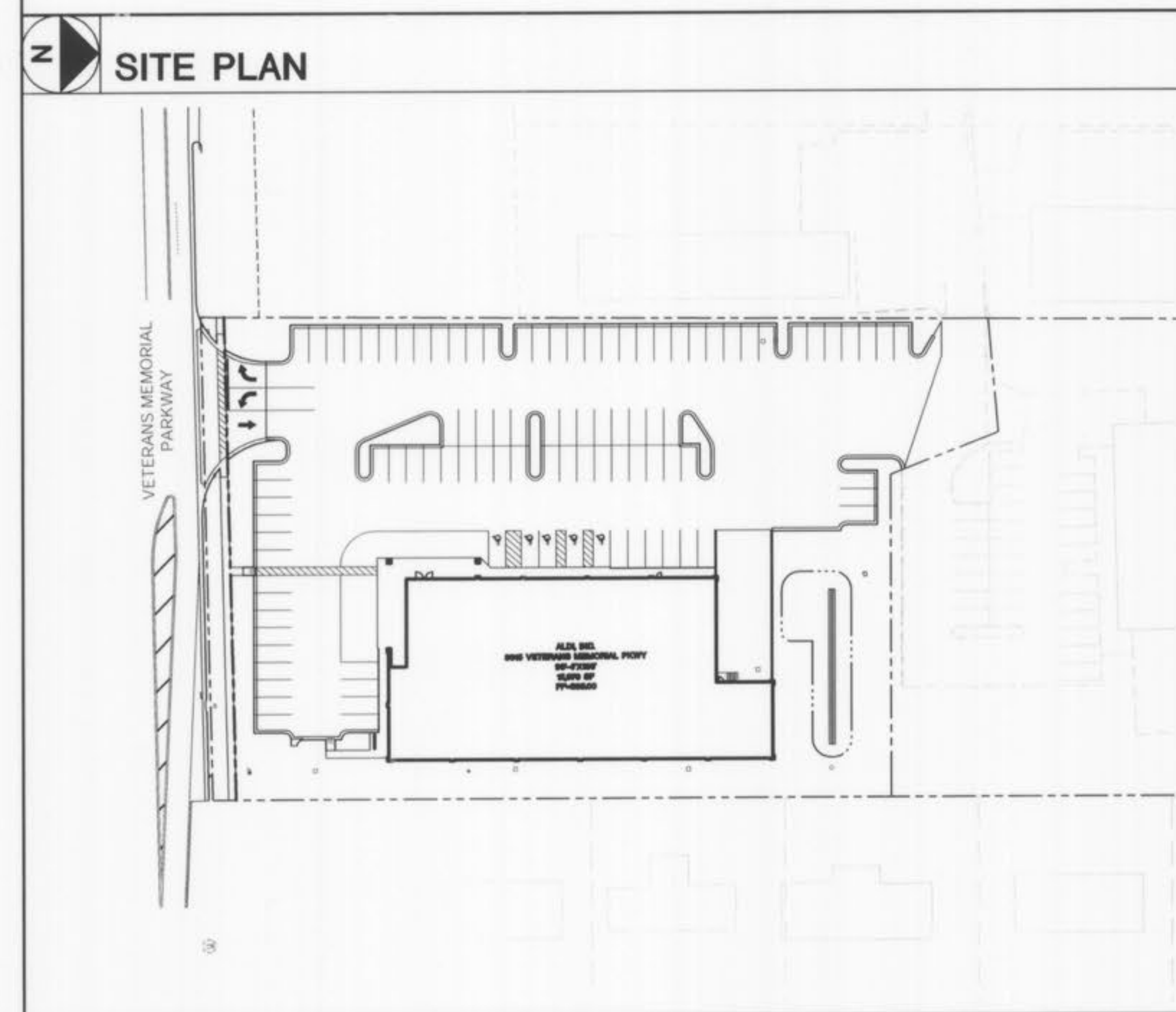
### SYMBOLGY LEGEND

EXISTING	PROPOSED	PROPOSED	PROPOSED
○	⊕	PROPOSED INTERMEDIATE CONTOUR	--- 061 ---
⊖	⊙	PROPOSED INDEX CONTOUR	--- 060 ---
□	■	EXISTING INTERMEDIATE CONTOUR	--- 050 ---
○	○	EXISTING INDEX CONTOUR	--- 050 ---
○	○	EXISTING FENCE	--- X ---
○	○	PROPOSED STORM DRAIN	--- 12" ST ---
○	○	EXISTING STORM DRAIN	--- 12" ST ---
○	○	PROPOSED ROOF DRAIN	--- 8" RD ---
○	○	EXISTING ROOF DRAIN	--- 8" RD ---
○	○	EXISTING STORM DRAIN (UNKNOWN SIZE)	--- STM ---
○	○	PROPOSED SANITARY SEWER	--- 8" SN ---
○	○	EXISTING SANITARY SEWER	--- 8" SN ---
○	○	EXISTING SANITARY SEWER (UNKNOWN SIZE)	--- SAN ---
○	○	PROPOSED WATER LINE	--- 8" W ---
○	○	EXISTING WATER LINE	--- 8" W ---
○	○	EXISTING WATER LINE (SIZE UNKNOWN)	--- W ---
○	○	PROPOSED ELECTRIC (UNDERGROUND)	--- UE ---
○	○	EXISTING ELECTRIC (UNDERGROUND)	--- UE ---
○	○	PROPOSED TELEPHONE (UNDERGROUND)	--- UT ---
○	○	EXISTING TELEPHONE (UNDERGROUND)	--- UT ---
○	○	PROPOSED GAS	--- G ---
○	○	EXISTING GAS	--- G ---
○	○	EXISTING TREE LINE	--- T ---
○	○	PROPOSED GUARD RAIL	--- GR ---
○	○	EXISTING GUARD RAIL	--- GR ---
○	○	EXISTING OVERHEAD TELEPHONE	--- OT ---
○	○	EXISTING OVERHEAD ELECTRIC	--- OE ---
○	○	EXISTING FIBER OPTIC	--- FO ---

### CONTACT INFORMATION

THE CITY OF O'FALLON SHALL ALSO BE CONTACTED SEPARATELY FOR ALL UTILITY LOCATES UNDER ITS MAINTENANCE RESPONSIBILITY.

ELECTRIC	TELECOMMUNICATIONS	CABLE
AMEREN UE 200 North Callahan Road Wentzville, MO 63385	GTE (VERIZON) 680 Parr Road Building AA Wentzville, MO 63385	AT&T CABLE SERVICES 4160 Old Mill Parkway Saint Peters, MO 63376
Cuivre River Electric Coop 1112 East Cherry Street PO Box 160 Troy, MO 63379	CENTURYTEL, INC. 1151 CenturyTel Drive Wentzville, MO 63385	CHARTER COMMUNICATIONS 100 North Main Street O'Fallon, MO 63366
WATER & SANITARY SEWER: ALLIANCE 410 East Elm Street O'Fallon, MO 63366	CHARTER COMMUNICATIONS 100 North Main Street O'Fallon, MO 63366	FIRE DISTRICT: O'Fallon Fire Protection District 119 East Elm Street O'Fallon, MO 63366
GAS LACLEDE GAS 3950 Forest Park Avenue Saint Louis, MO 63108		



### SHEET INDEX

C000	COVER SHEET
C400	UTILITY PLAN
C401	PROFILES AND CROSS SECTIONS
R902	ROADWAY PROFILE

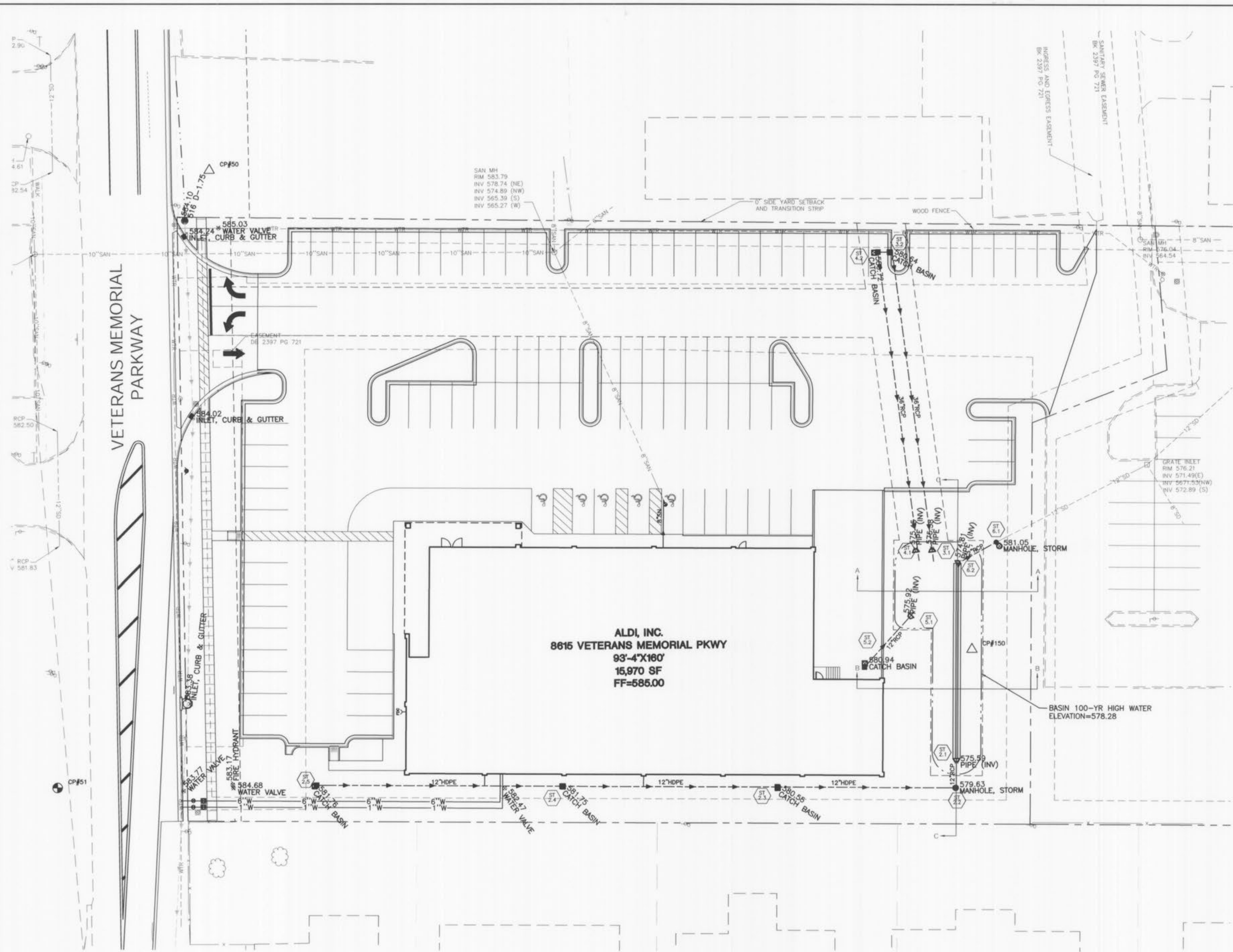
### DRAWING INDEX LEGEND

□	C000	COVER SHEET
○		MOST RECENT ISSUE OR REVISION DATE
○		FILED CIRCLE INDICATES DRAWING INCLUDED WITH THIS ISSUE

No.	DATE	REVISION
7/27/07		REVISED PER CITY COMMENTS
5/17/07		CITY COMMENTS
PROJECT No:		64702
		C000



C:\SD\Projects\ALDI\CIVIL\O'Fallon, Mo\Design 64702\dwg\64702-UTI\_AB.dwg, Plotted: Jul 30, 2007 - 2:25pm



**ALDI, INC.**  
**8615 VETERANS MEMORIAL PKWY**  
**93'-4\"/>**

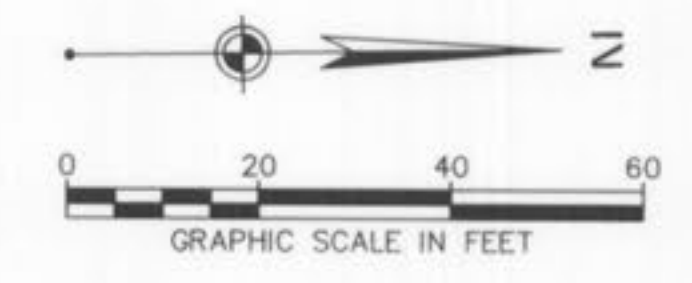
**NOTES**  
 SEE C000 FOR SYMBOLGY LEGEND.  
 SEE C401 FOR SEWER PROFILES.

**CONTACT INFORMATION**

THE CITY OF O'FALLON SHALL ALSO BE CONTACTED SEPARATELY FOR ALL UTILITY LOCATES UNDER ITS MAINTENANCE RESPONSIBILITY.

<p><b>ELECTRIC</b>                  AMEREN UE                  200 North Callahan Road                  Wentzville, MO 63385</p> <p>Cuivre River Electric Coop                  1112 East Cherry Street                  PO Box 160                  Troy, MO 63379</p> <p><b>TELECOMMUNICATIONS:</b>                  GTE (VERIZON)                  680 Parr Road                  Building AA                  Wentzville, MO 63385</p> <p>CENTURYTEL, INC.                  1151 CenturyTel Drive                  Wentzville, MO 63385</p> <p>CHARTER COMMUNICATIONS                  100 North Main Street                  O'Fallon, MO 63366</p>	<p><b>WATER &amp; SANITARY SEWER:</b>                  ALLIANCE                  410 East Elm Street                  O'Fallon, MO 63366</p> <p><b>GAS</b>                  LACLEDE GAS                  3950 Forest Park Avenue                  Saint Louis, MO 63108</p> <p><b>CABLE:</b>                  AT&amp;T CABLE SERVICES                  4160 Old Mill Parkway                  Saint Peters, MO 63376</p> <p><b>CHARTER COMMUNICATIONS</b>                  100 North Main Street                  O'Fallon, MO 63366</p> <p><b>FIRE DISTRICT:</b>                  O'Fallon Fire Protection District                  119 East Elm Street                  O'Fallon, MO 63366</p>
--	---

**BENCHMARK**  
 SITE BM:  
 TOP OF REBAR SET FLUSH WITH GROUND  
 ELEV: 581.97 (NAVD 88)  
 USGS DATUM OBTAINED BY GPS OBSERVATION

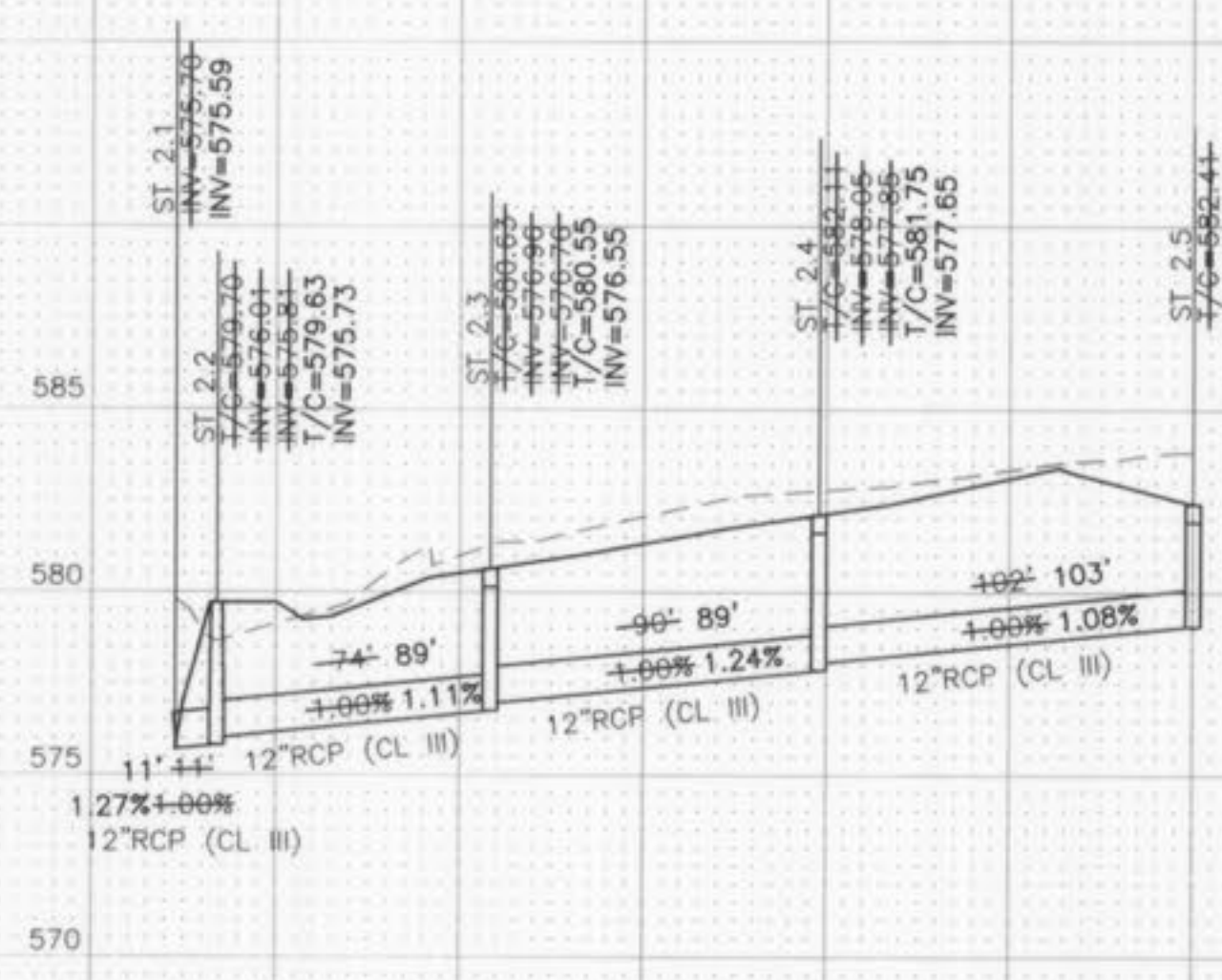


**AS-BUILT DRAWING**

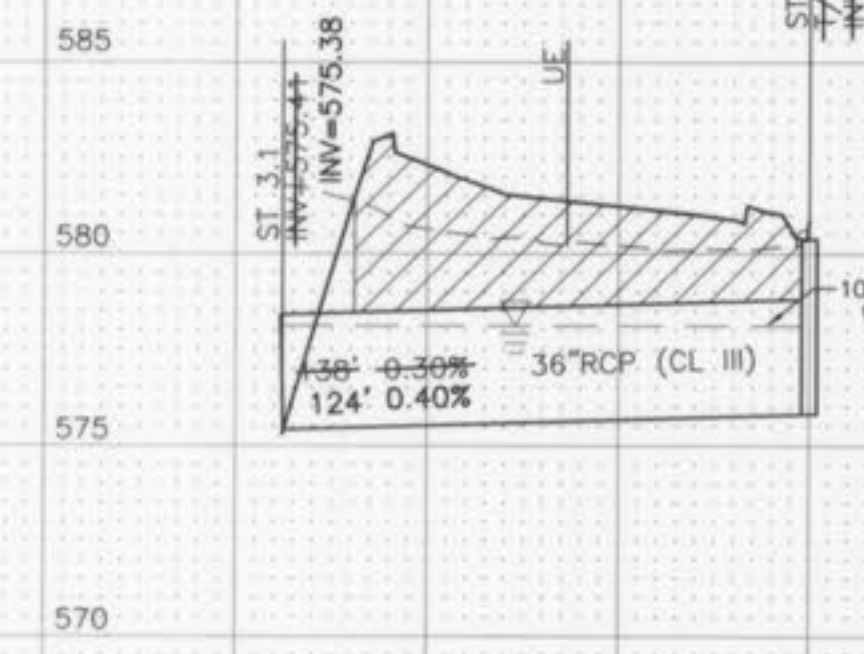
<b>PROJECT No:</b>	<b>REVISION</b>
64702	
<b>DATE</b>	<b>DATE</b>
APR 06	
<b>DES.</b>	<b>NO.</b>
JPS	
<b>DR.</b>	<b>7/27/07</b>
CAD	REVISED PER CITY COMMENTS
<b>CKD.</b>	<b>5/17/07</b>
JPS	CITY COMMENTS
	<b>4/18/07</b>
	AS-BUILT SUBMITTAL
<p><b>WOOLPERT, INC.</b>                  1910 Pine Street, Suite 420                  Saint Louis, Missouri                  63103-2254                  314.241.3005                  FAX: 314.436.0884</p>	
<p><b>ALDI - O'FALLON, MO</b>  <b>ALDI, INC.</b>                  8615 VETERANS MEMORIAL PARKWAY                  O'FALLON, MISSOURI 63366</p>	
<p><b>AS-BUILT UTILITY PLAN</b></p>	
<p>SHEET NO. <b>C400</b></p>	



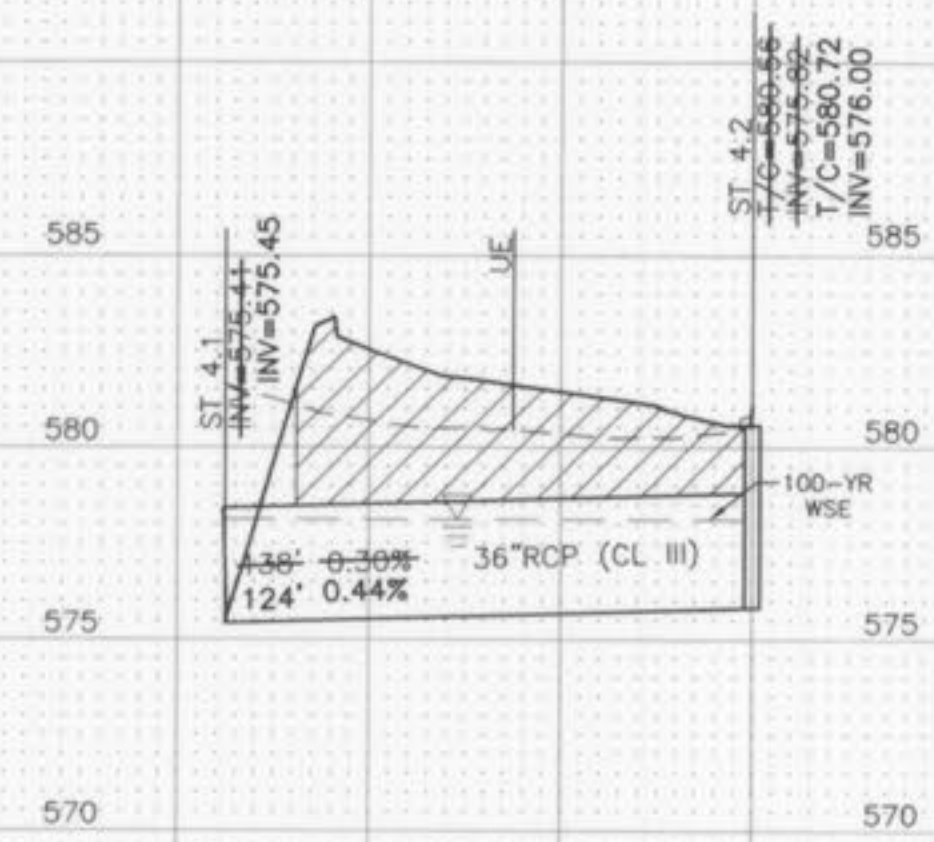
G:\SD\Projects\ALDI\CIVIL\O'Fallon, Mo\Design-64702\dwg\64702-PRO\_AB.dwg, Plotted By: bruced, Plotted: Jul 30, 2007 - 2:12pm



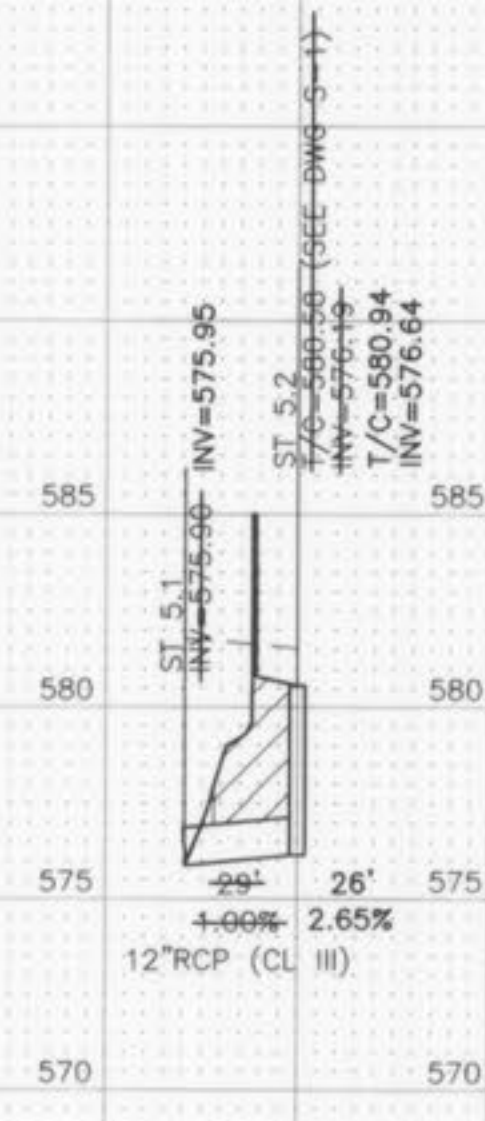
STORM SEWER 2 (PRIVATE)



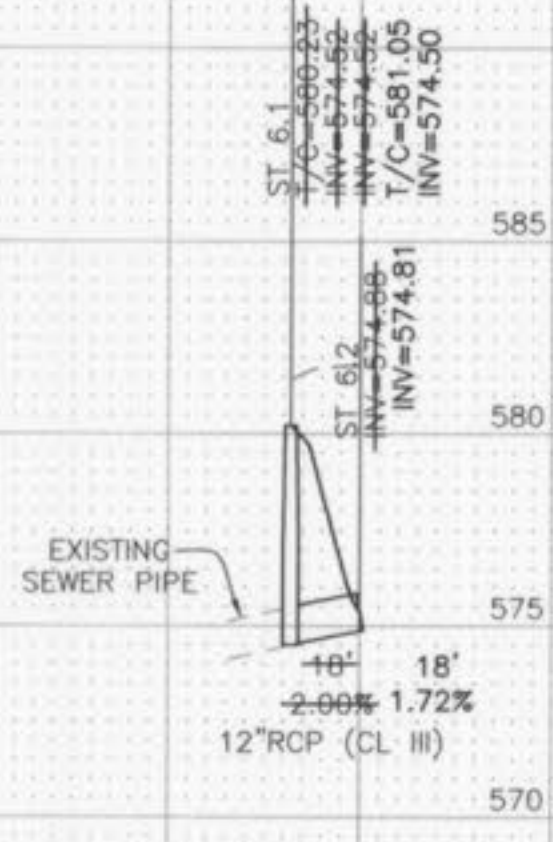
STORM SEWER 3 (PRIVATE)



STORM SEWER 4 (PRIVATE)



STORM SEWER 5 (PRIVATE)

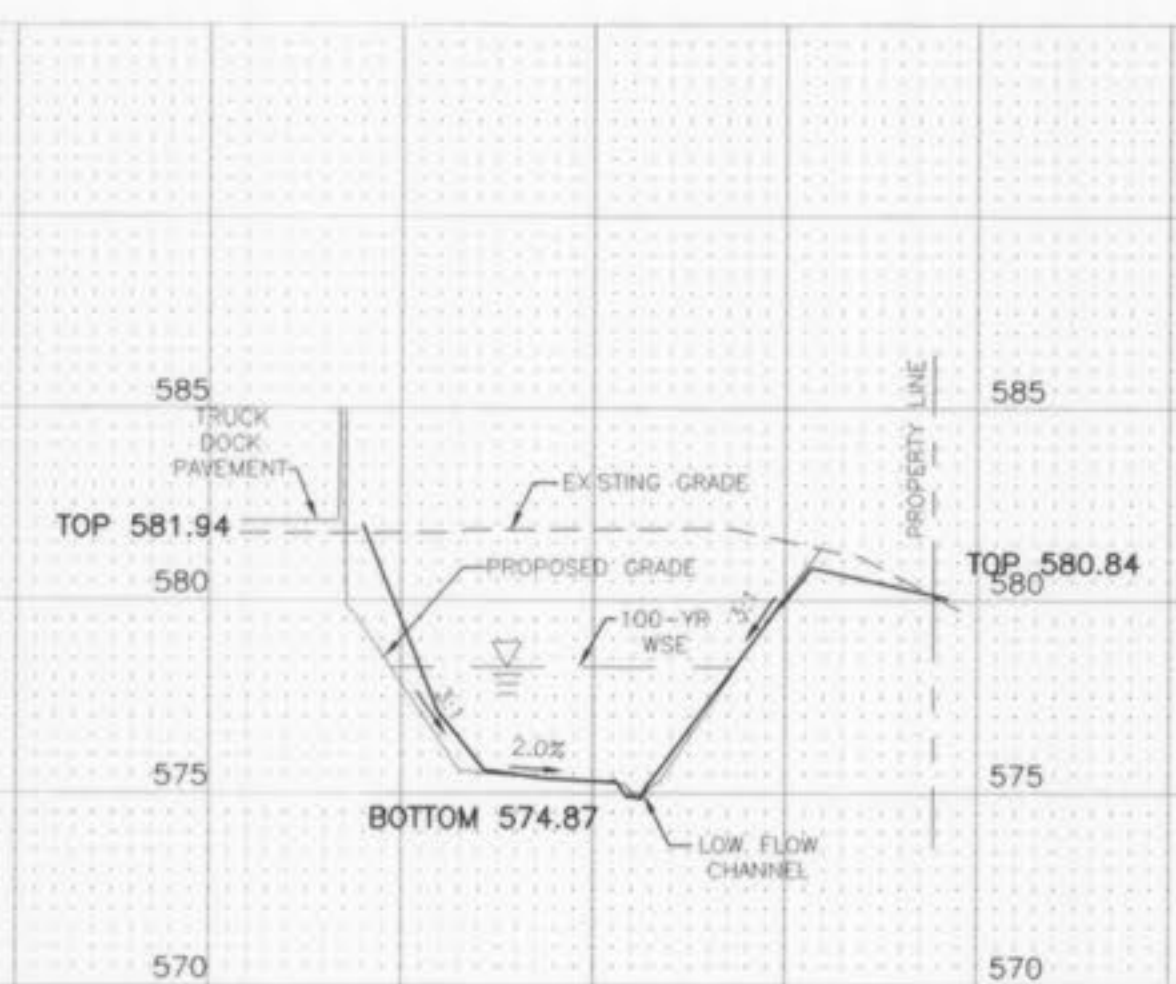
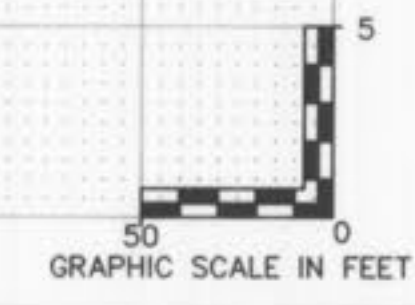


STORM SEWER 6 (PRIVATE)

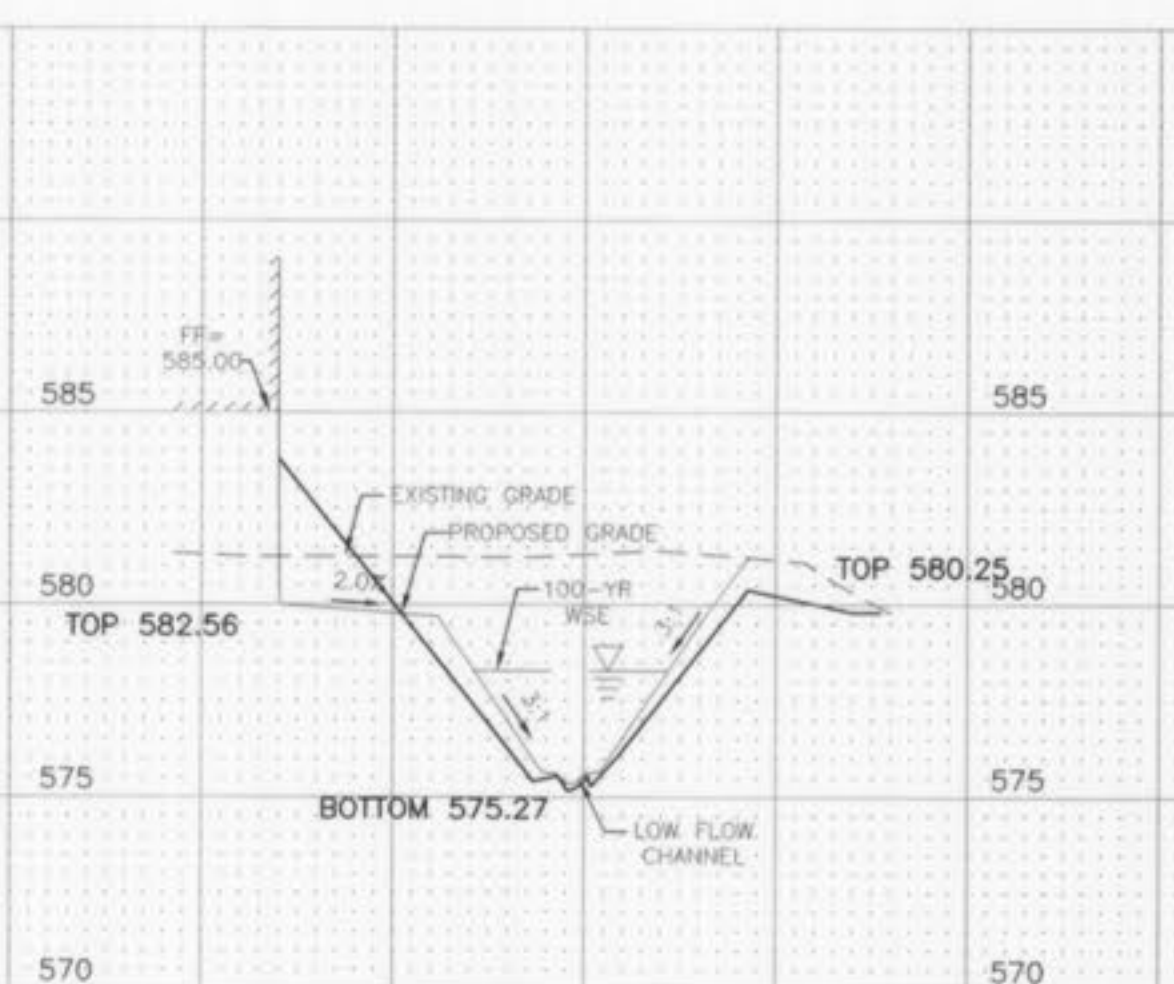
ALL STRUCTURES HAVE BEEN VERIFIED TO HAVING THE MINIMUM SLOPED BOTTOM.

**NOTES**  
T/C SHALL INDICATE THE TOP RIM ELEVATION OF THE STRUCTURE. T/C SHALL INDICATE TOP OF CURB WHEN STRUCTURE IS A CURB INLET.

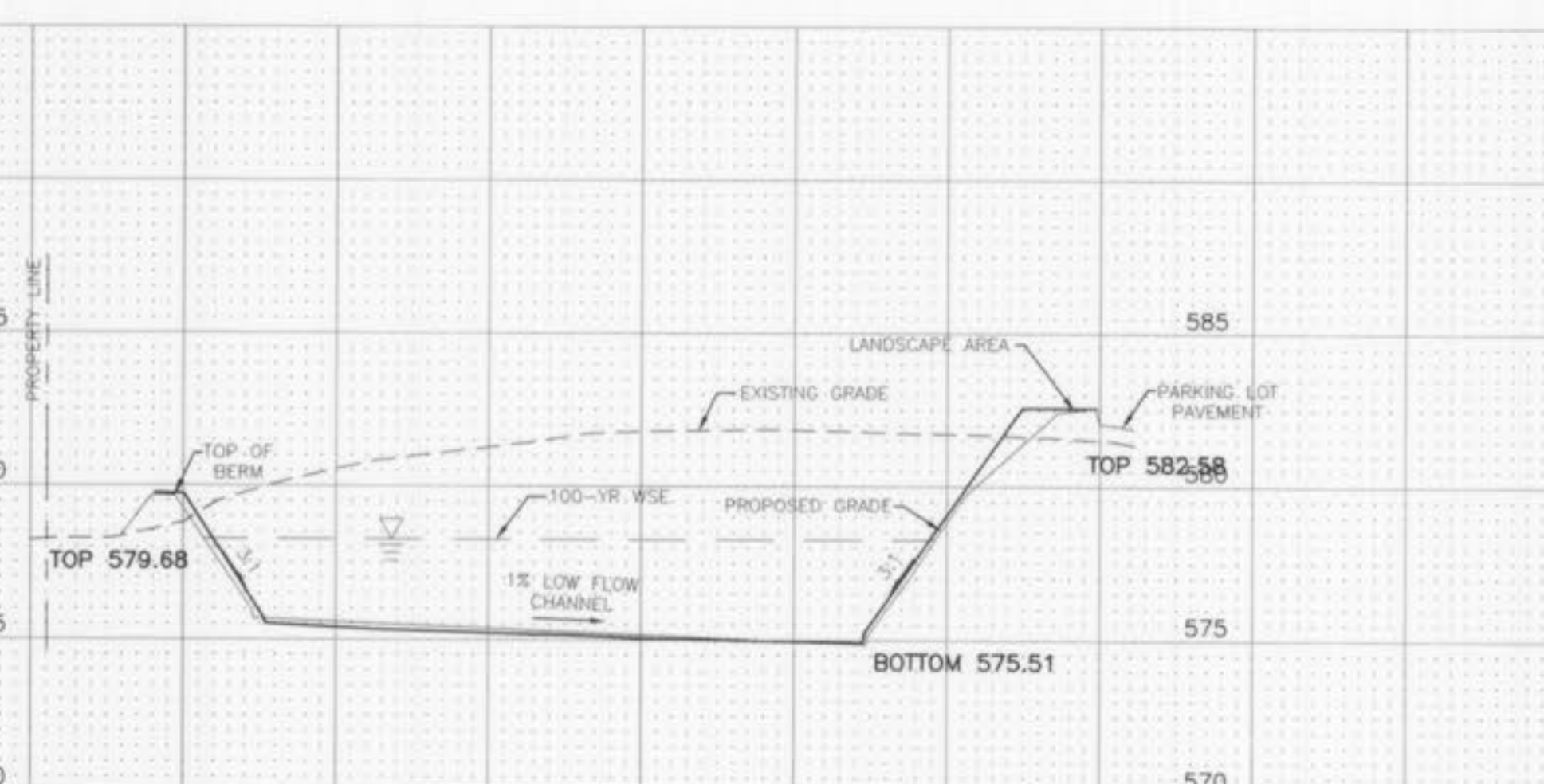
**LEGEND**  
[Hatched Box] COMPACTED GRANULAR BACKFILL



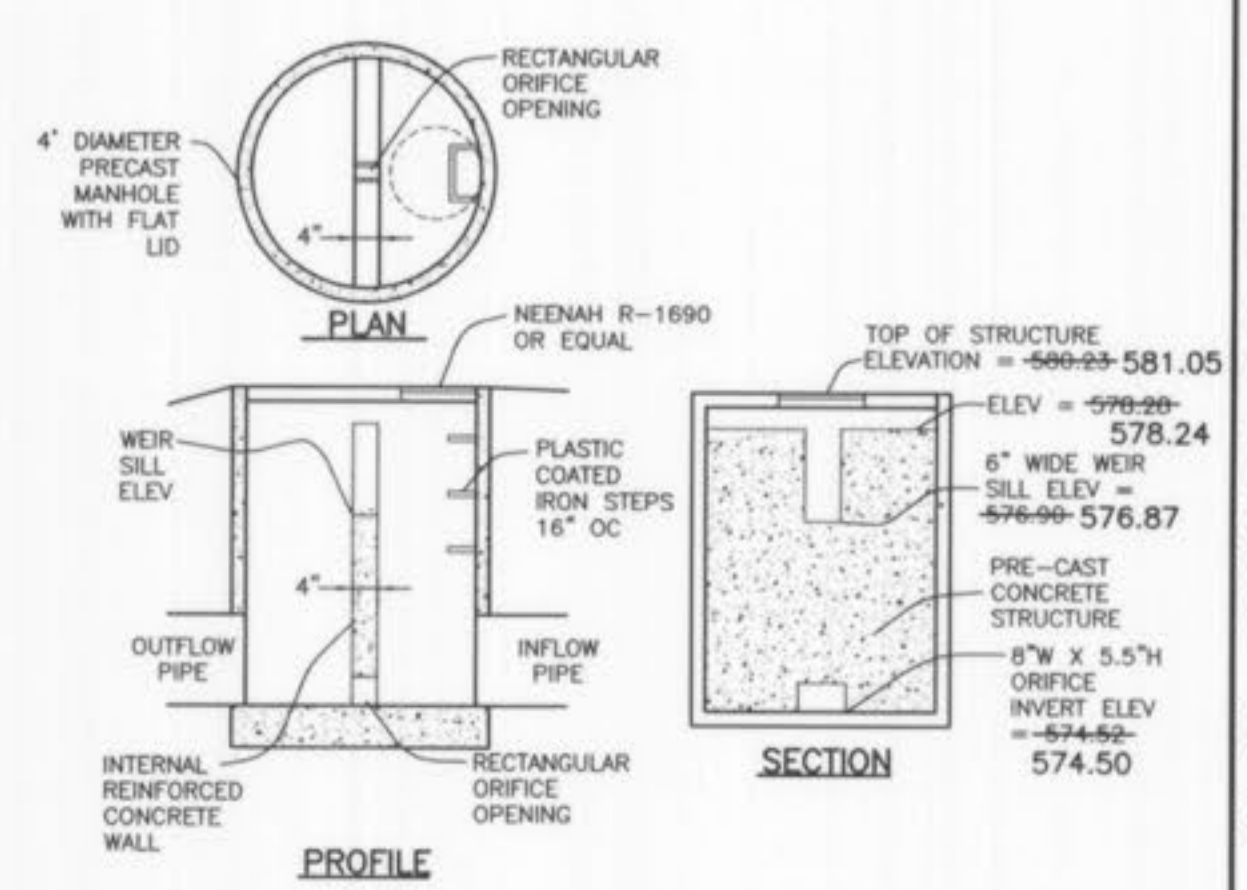
BASIN CROSS SECTION A-A



BASIN CROSS SECTION B-B



BASIN CROSS SECTION C-C



**PROFILE**  
NOTE:  
BOTTOM OF STRUCTURE SHALL BE SLOPED TO FOLLOW PIPE SLOPES TO MAINTAIN POSITIVE DRAINAGE THROUGH THE STRUCTURE.  
PROVIDE 1/2" DIA STEEL ROD WITH 6" ANGLE ON ONE END AND "T" HANDLE 3" LONGER THAN THE STRUCTURE DEPTH. ROD SHALL BE SUPPLIED TO OWNER FOR STORAGE.

**OUTLET STRUCTURE**  
NOT TO SCALE

AS-BUILT DRAWING



No.	DATE	REVISION

PROJECT No:	64702
DATE	APR 06
DES.	JPS
DR.	CAD
CKD.	JPS

WOOLPERT, INC.  
1910 Pine Street, Suite 420  
Saint Louis, Missouri  
63103-2254  
314.241.3005  
314.436.0884  
FAX: 314.436.0884



**ALDI - O'FALLON, MO**  
**ALDI, INC.**  
8615 VETERANS MEMORIAL PARKWAY  
O'FALLON, MISSOURI 63366

AS-BUILT SEWER PROFILES  
SHEET NO. C401



