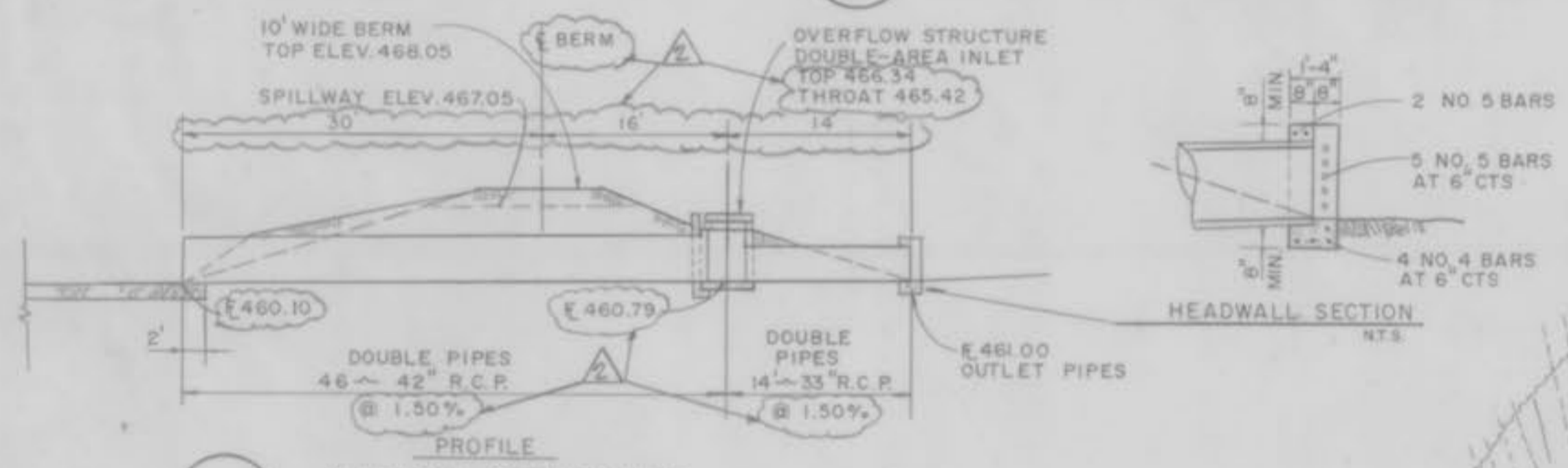
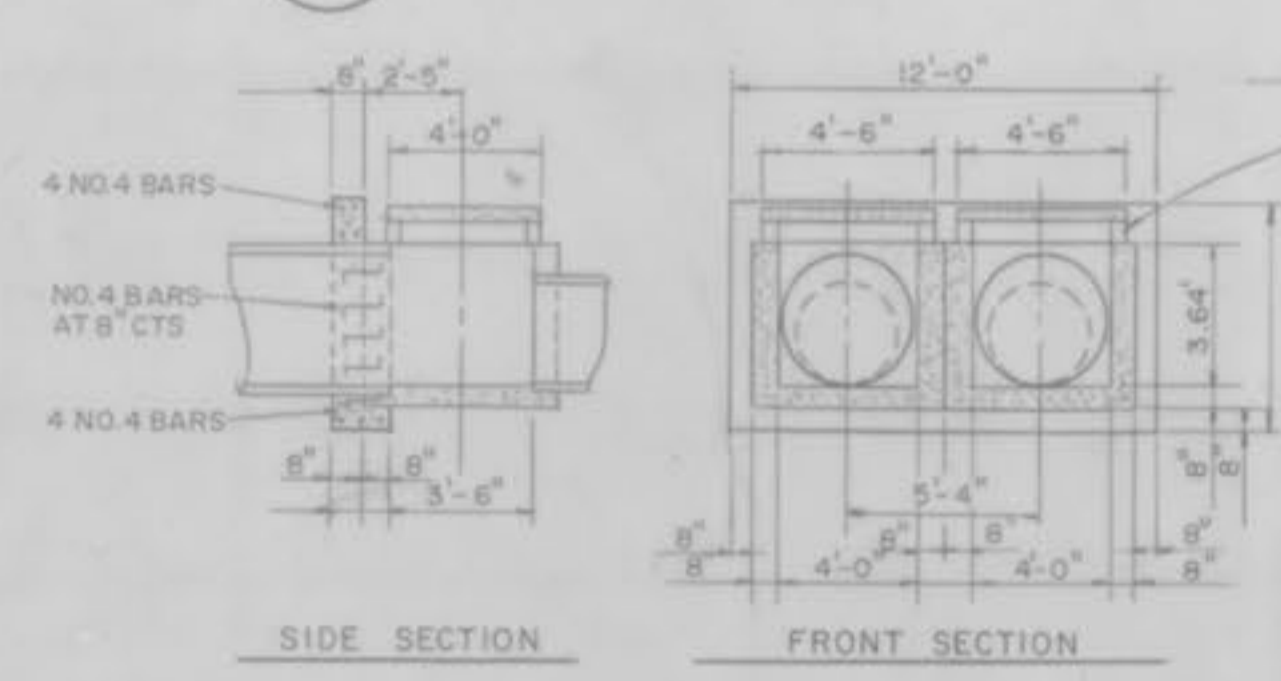


1 ENTRANCE DETAIL SCALE: 1" = 20'



2 OUTLET STRUCTURE N.T.S.



3 OVERFLOW STRUCTURES N.T.S.

BENCH MARK: STANDARD TABLE - U.S.G.S. NO. 1-149 (RESET 1980) ON TOP OF THE CONCRETE BASE OF THE FIRST CONCRETE BENT NORTH OF THE TRACKS OF THE WABASH RAILROAD... SITE BENCH MARK: R.R. SPIKE IN EAST FACE LIGHT POLE, NORTH OF MONSANTO ENTRANCE, WEST OF PEARL DRIVE (OLD HWY. 79) ELEV. 476.55

AB. = "AS BUILT" SANITARY SEWER "AS BUILTS" DATE 2-8-90



- NOTES: 1. FOR SANITARY SEWER SEE MECHANICAL DRAWINGS. 2. FOR WATER INFORMATION SEE MECHANICAL DRAWINGS. 3. FOR GAS LINES SEE MECHANICAL DRAWINGS. 4. ALL SANITARY SEWERS SHALL HAVE A MINIMUM PIPE COVER OF 42 INCHES. 5. NO BRICK SANITARY MANHOLES WILL BE ALLOWED. 6. MNEI WILL INSPECT THE SANITARY TAP BEFORE BEING BACK-FILLED.

SEE G-9 MATCH LINE 5700 SEE G-10 SEE G-11

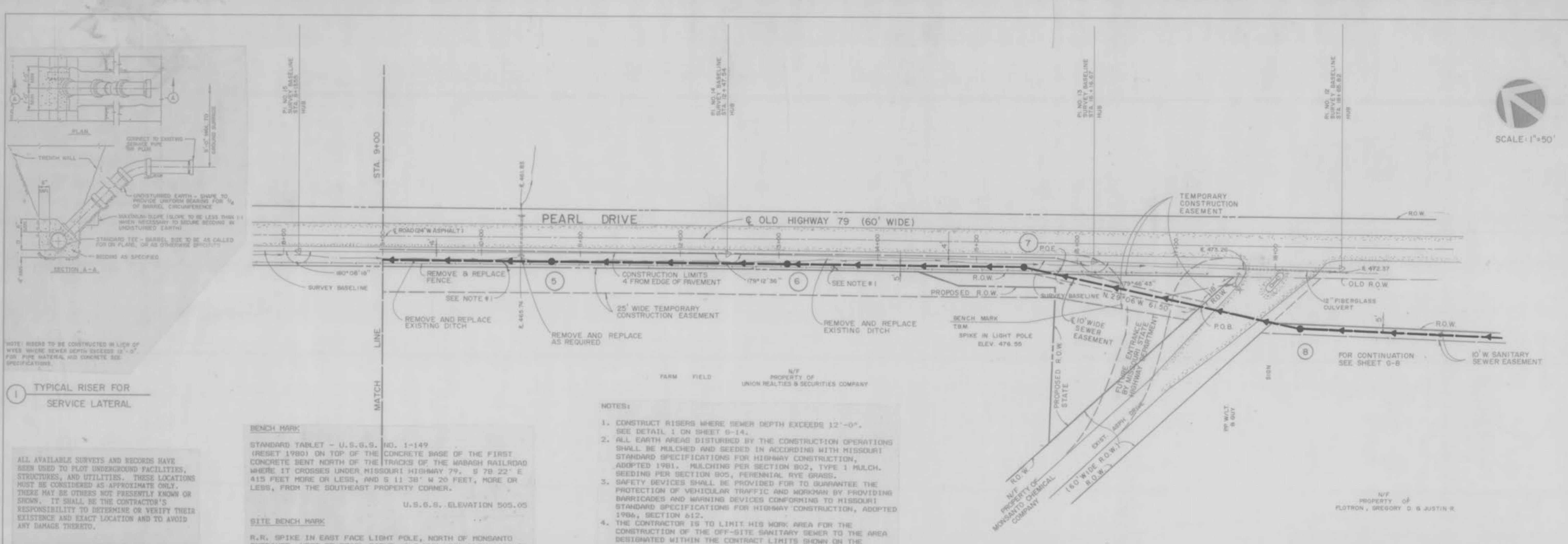
PROPERTY OF CITY OF O'FALLON ENGINEERING DEPARTMENT

ENTIRE SHEET

Vertical strip on the right side containing project information, design/builder details (CARL A. NELSON & COMPANY), and job identification (WAREHOUSE - O'FALLON, MISSOURI PROPOSED GRADING, JOB NO. 88035, G-8, MARCH 1988).

PLAN
 SHEET NO. 1
 DATE BOOK
 PROJECT NO. 88-76 G
 SHEET NO. 1

PROFILE
 SHEET NO. 1
 DATE BOOK
 PROJECT NO. 88-76 G
 SHEET NO. 1



NOTE: RISERS TO BE CONSTRUCTED IN LICH OF WYES WHERE SEWER DEPTH EXCEEDS 12'-0" FOR PIPE MATERIAL AND CONCRETE SEE SPECIFICATIONS.

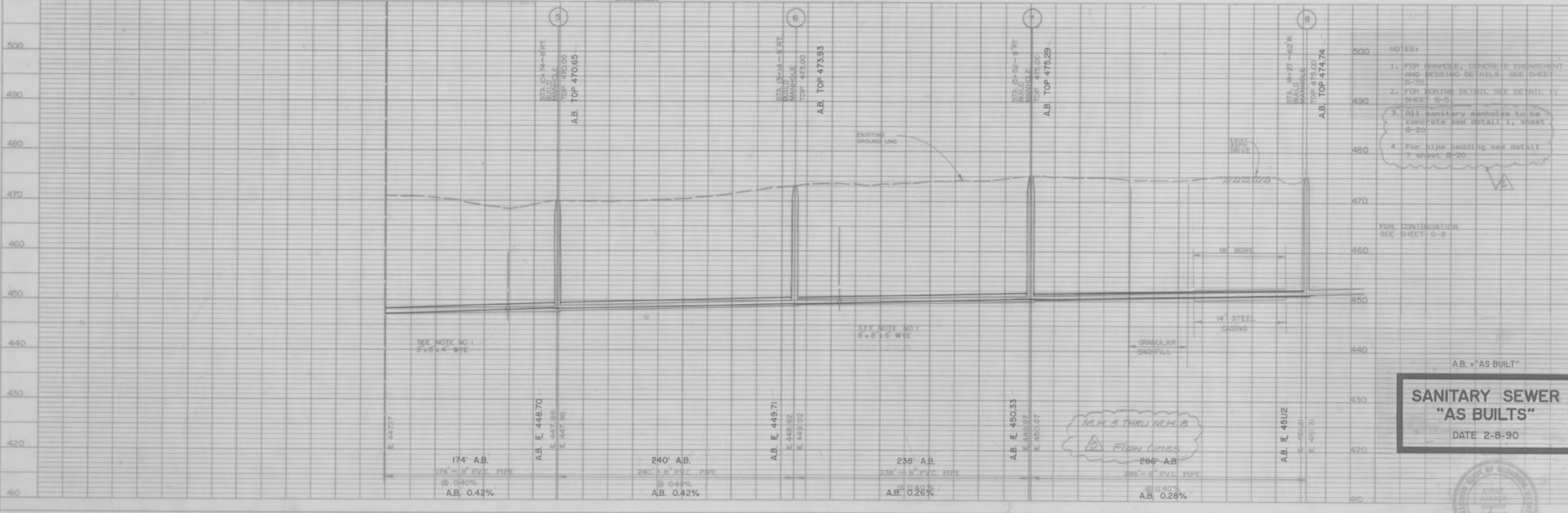
TYPICAL RISER FOR SERVICE LATERAL

ALL AVAILABLE SURVEYS AND RECORDS HAVE BEEN USED TO PLOT UNDERGROUND FACILITIES, STRUCTURES, AND UTILITIES. THESE LOCATIONS MUST BE CONSIDERED AS APPROXIMATE ONLY. THERE MAY BE OTHERS NOT PRESENTLY KNOWN OR SHOWN. IT SHALL BE THE CONTRACTOR'S RESPONSIBILITY TO DETERMINE OR VERIFY THEIR EXISTENCE AND EXACT LOCATION AND TO AVOID ANY DAMAGE THEREO.

BENCH MARK
 STANDARD TABLE - U.S.G.S. NO. 1-149 (RESET 1980) ON TOP OF THE CONCRETE BASE OF THE FIRST TRACKS OF THE WABASH RAILROAD WHERE IT CROSSES UNDER MISSOURI HIGHWAY 79. S 79 22' E 415 FEET MORE OR LESS, AND S 11 38' W 20 FEET, MORE OR LESS, FROM THE SOUTHEAST PROPERTY CORNER.
 U.S.G.S. ELEVATION 505.05

SITE BENCH MARK
 N.R. SPIKE IN EAST FACE LIGHT POLE, NORTH OF MONSANTO ENTRANCE, WEST OF PEARL DRIVE (OLD HWY. 79) ELEV. 476.55

- NOTES:**
1. CONSTRUCT RISERS WHERE SEWER DEPTH EXCEEDS 12'-0". SEE DETAIL 1 ON SHEET 0-14.
 2. ALL EARTH AREAS DISTURBED BY THE CONSTRUCTION OPERATIONS SHALL BE MULCHED AND SEEDING IN ACCORDING WITH MISSOURI STANDARD SPECIFICATIONS FOR HIGHWAY CONSTRUCTION, ADOPTED 1981. MULCHING PER SECTION 902, TYPE 1 MULCH. SEEDING PER SECTION 905, PERENNIAL RYE GRASS.
 3. SAFETY DEVICES SHALL BE PROVIDED FOR TO GUARANTEE THE PROTECTION OF VEHICULAR TRAFFIC AND WORKMAN BY PROVIDING BARRICADES AND WARNING DEVICES CONFORMING TO MISSOURI STANDARD SPECIFICATIONS FOR HIGHWAY CONSTRUCTION, ADOPTED 1981, SECTION 612.
 4. THE CONTRACTOR IS TO LIMIT HIS WORK AREA FOR THE CONSTRUCTION OF THE OFF-SITE SANITARY SEWER TO THE AREA DESIGNATED WITHIN THE CONTRACT LIMITS SHOWN ON THE DRAWINGS.



**SANITARY SEWER
 "AS BUILTS"
 DATE 2-8-90**

PROPERTY OF
 CITY OF FALLON,
 BUILDING DEPARTMENT

REV 9-14-89 REV. 9-7-89

RECORDS
 6/15/89
 6/7/1989

DESIGNER: KBR ENGINEERING, INC.
 STRUCTURAL ENGINEER: SHANNON & WILSON, INC.
 ARCHITECT: OPEN ARCHITECTS, INC.
 CIVIL ENGINEER: JACK C. MILLER & ASSOCIATES
 ELECTRICAL ENGINEER: REYNOLDS & REYNOLDS ASSOCIATES, INC.

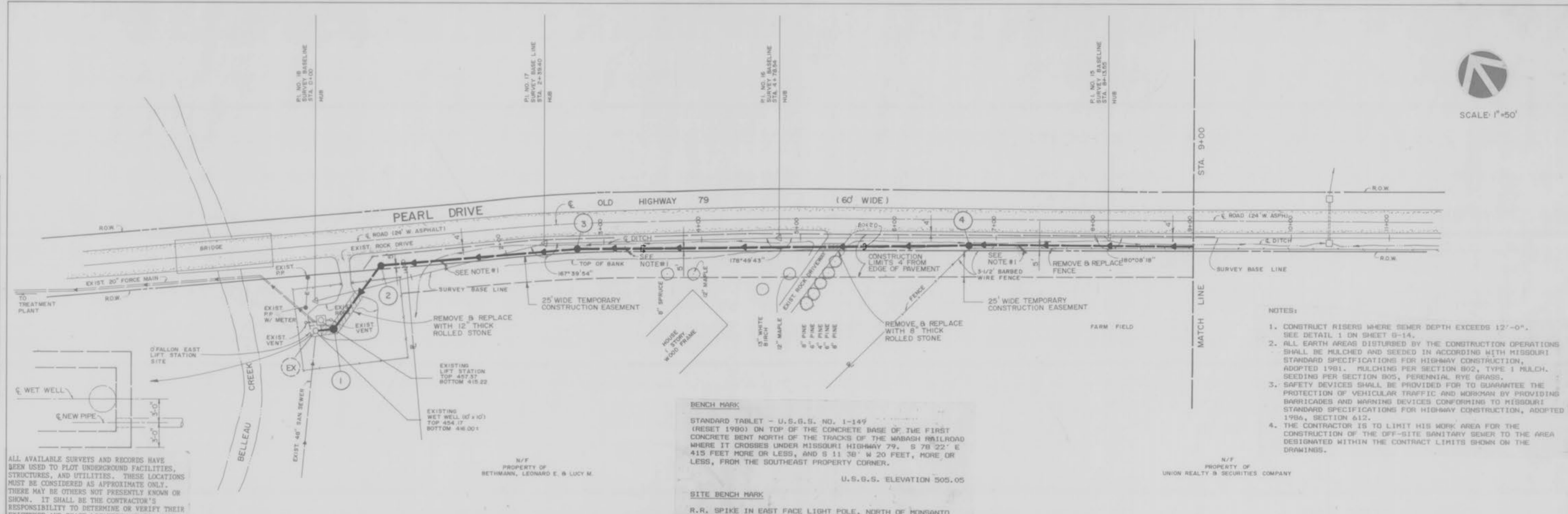
DESIGN / BUILDER:
CARL A. NELSON & COMPANY
 1815 DES MONTE AVENUE
 DUBLINGTON, IOWA 52001
 (319) 754-8115

WAREHOUSE - O'FALLON, MISSOURI
 OFF-SITE SAN SEWER/PROFILES

JOB NO. 88055
G-14
 MARCH 1989

DATE	BY
REVISION	
NOTED	
ASSEMBLY CHECKED	
BY	
NO.	

DATE	BY
REVISION	
NOTED	
ASSEMBLY CHECKED	
BY	
NO.	

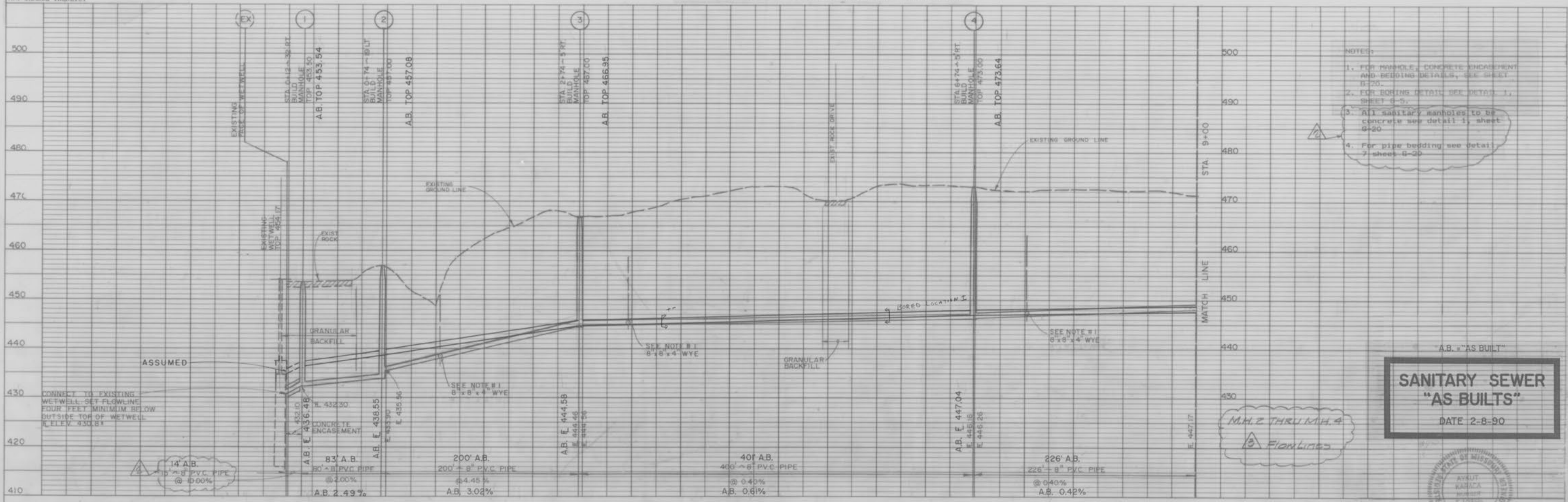


ALL AVAILABLE SURVEYS AND RECORDS HAVE BEEN USED TO PLOT UNDERGROUND FACILITIES, STRUCTURES, AND UTILITIES. THESE LOCATIONS MUST BE CONSIDERED AS APPROXIMATE ONLY. THERE MAY BE OTHERS NOT PRESENTLY KNOWN OR SHOWN. IT SHALL BE THE CONTRACTOR'S RESPONSIBILITY TO DETERMINE OR VERIFY THEIR EXISTENCE AND EXACT LOCATION AND TO AVOID ANY DAMAGE THEREON.

BENCH MARK
 STANDARD TABLET - U.S.G.S. NO. 1-149
 (RESET 1980) ON TOP OF THE CONCRETE BASE OF THE FIRST CONCRETE BENT NORTH OF THE TRACKS OF THE WABASH RAILROAD WHERE IT CROSSES UNDER MISSOURI HIGHWAY 79. S 78° 22' E 415 FEET MORE OR LESS, AND S 11° 38' W 20 FEET, MORE OR LESS, FROM THE SOUTHEAST PROPERTY CORNER.
 U.S.G.S. ELEVATION 505.05

SITE BENCH MARK
 R.R. SPIKE IN EAST FACE LIGHT POLE, NORTH OF HONGANTO ENTRANCE, WEST OF PEARL DRIVE (OLD HWY. 79) ELEV. 476.55

- NOTES:**
1. CONSTRUCT RISERS WHERE SEWER DEPTH EXCEEDS 12'-0". SEE DETAIL 1 ON SHEET 9-14.
 2. ALL EARTH AREAS DISTURBED BY THE CONSTRUCTION OPERATIONS SHALL BE MULCHED AND SEEDING IN ACCORDING WITH MISSOURI STANDARD SPECIFICATIONS FOR HIGHWAY CONSTRUCTION, ADOPTED 1981. MULCHING PER SECTION 802, TYPE 1 MULCH. SEEDING PER SECTION 805, PERENNIAL RYE GRASS.
 3. SAFETY DEVICES SHALL BE PROVIDED FOR TO GUARANTEE THE PROTECTION OF VEHICULAR TRAFFIC AND WORKMAN BY PROVIDING BARRICADES AND WARNING DEVICES CONFORMING TO MISSOURI STANDARD SPECIFICATIONS FOR HIGHWAY CONSTRUCTION, ADOPTED 1984, SECTION 612.
 4. THE CONTRACTOR IS TO LIMIT HIS WORK AREA FOR THE CONSTRUCTION OF THE OFF-SITE SANITARY SEWER TO THE AREA DESIGNATED WITHIN THE CONTRACT LIMITS SHOWN ON THE DRAWINGS.



- NOTES:**
1. FOR MANHOLE, CONCRETE ENCASUREMENT AND BEDDING DETAILS, SEE SHEET 9-25.
 2. FOR BORING DETAIL, SEE DETAIL 1, SHEET 9-5.
 3. ALL MANHOLE MANHOLES TO BE CONCRETE SEE DETAIL 1, SHEET 9-20.
 4. For pipe bedding see detail 7 sheets 9-20.

**SANITARY SEWER
 "AS BUILTS"
 DATE 2-8-90**



PROPERTY OF
 CITY OF O'FALLON
 BUILDING DEPARTMENT

REASON: 1/21/87 1/19/87

DESIGNER: KBR ENGINEERING, INC. MICHAEL L. KBR
 PROJECT: O'FALLON, MISSOURI
 CHECKED: SHAMON & WILSON, INC. SHAMON WILSON
 APPROVED: SHAMON & WILSON, INC. SHAMON WILSON

DESIGN / BUILDER: CARL A. NELSON & COMPANY
 1815 DES MOINES AVENUE BOX 688
 BURLINGTON, IOWA (319) 754-8415

**WAREHOUSE - O'FALLON, MISSOURI
 OFF-SITE SAN SEWER/PROFILE**

JOB NO. 86055
G-13
 MARCH 1989

K.B.R. JOB NO. 88-76-9

