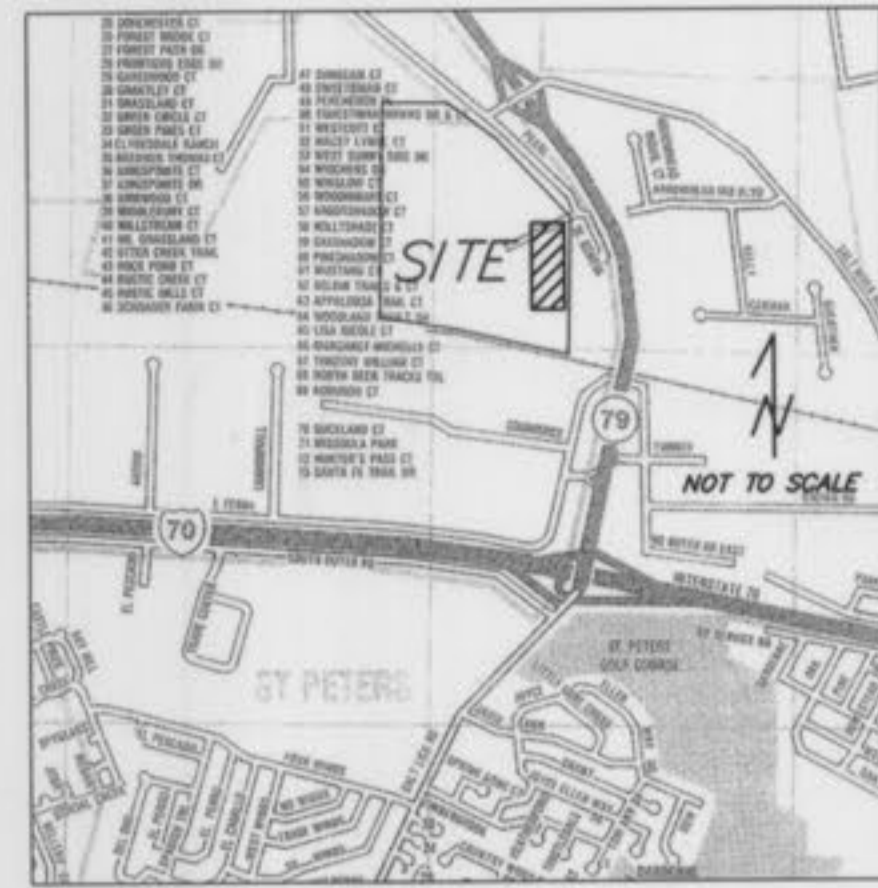


LOCATION MAP

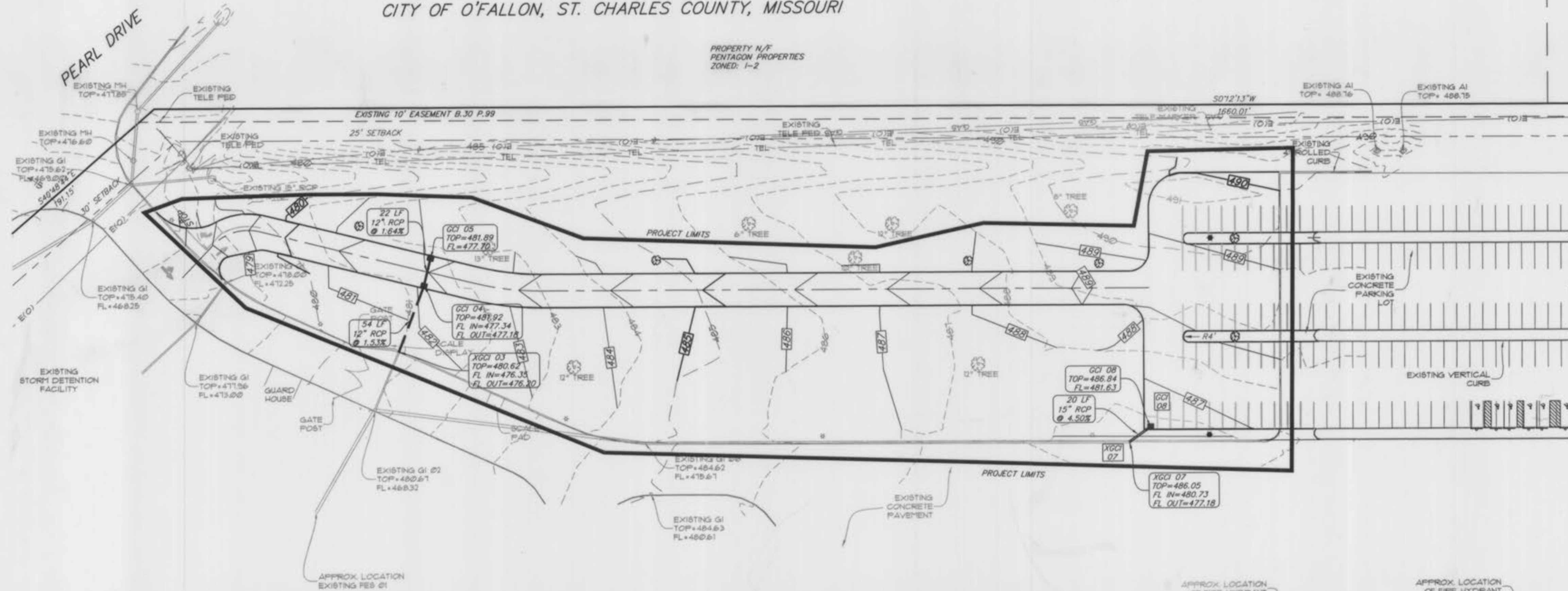


EXISTING	LEGEND	PROPOSED
854	CONTOURS	854
X 854	SPOT ELEVATIONS	854
	CENTER LINE	
	BUILDING, ETC.	
	TREE LINE	
	FENCE	
	STORM SEWERS	
	SANITARY SEWERS	
	CURB INLET	
	AREA INLET	
	STORM MANHOLE	
	FLARED END	
	SANITARY MANHOLE	
	UTILITY OR POWER POLE	
	FIRE HYDRANT	
	PAVEMENT	
	WATER MAIN & SIZE	
	GAS MAIN	
	TELEPHONE	
	ELECTRIC (UNDERGROUND)	
	ELECTRIC (OVERHEAD)	
	SKALE	
	LIGHT STANDARD	
	STREET SIGN	
	TREE	

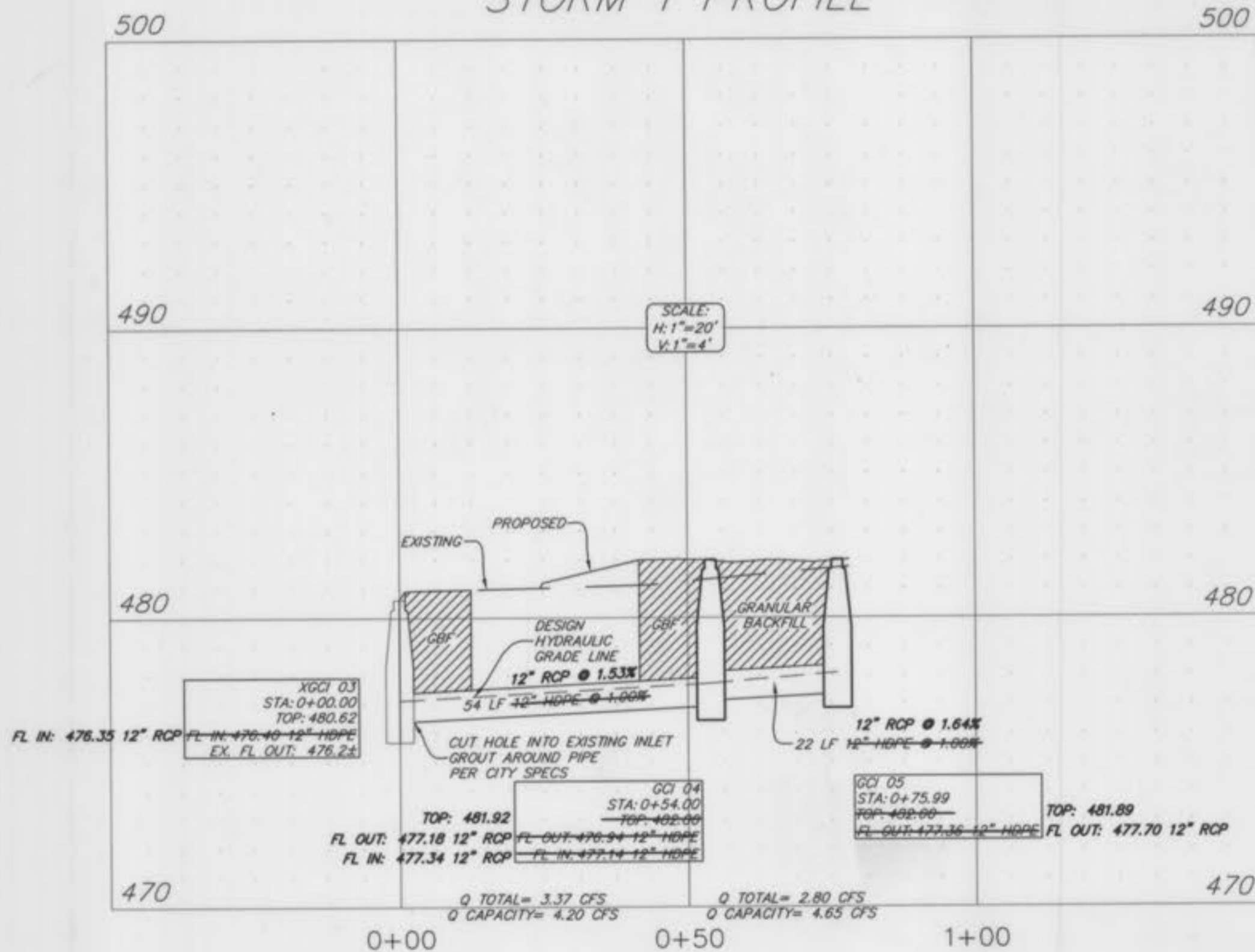
ALDI'S PARKING LOT ADDITION STORM AS-BUILT

A TRACT OF LAND BEING PART OF
US SURVEY 731, TOWNSHIP 47N, RANGE 2E
CITY OF O'FALLON, ST. CHARLES COUNTY, MISSOURI

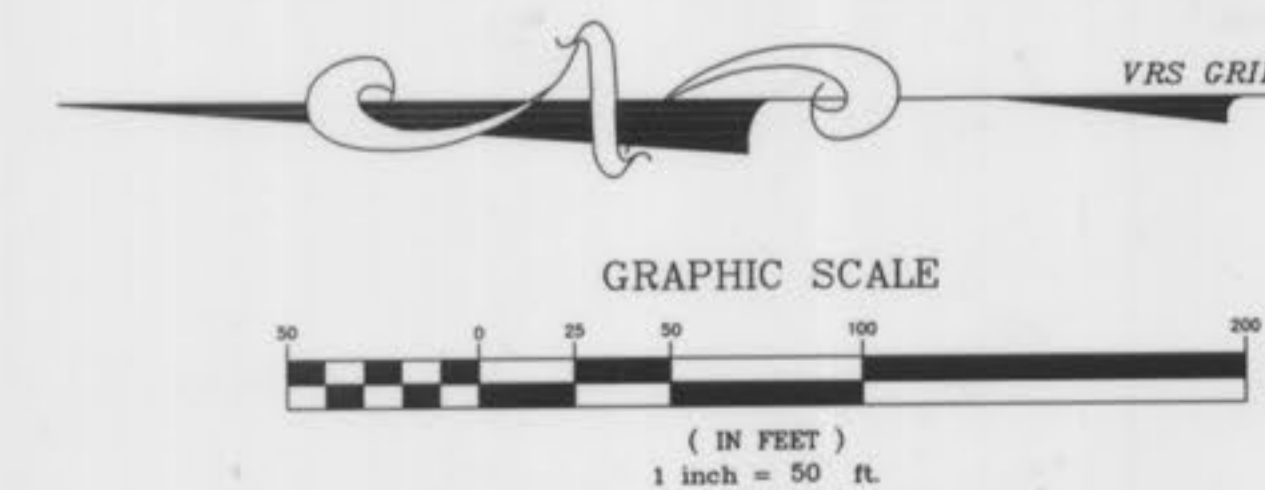
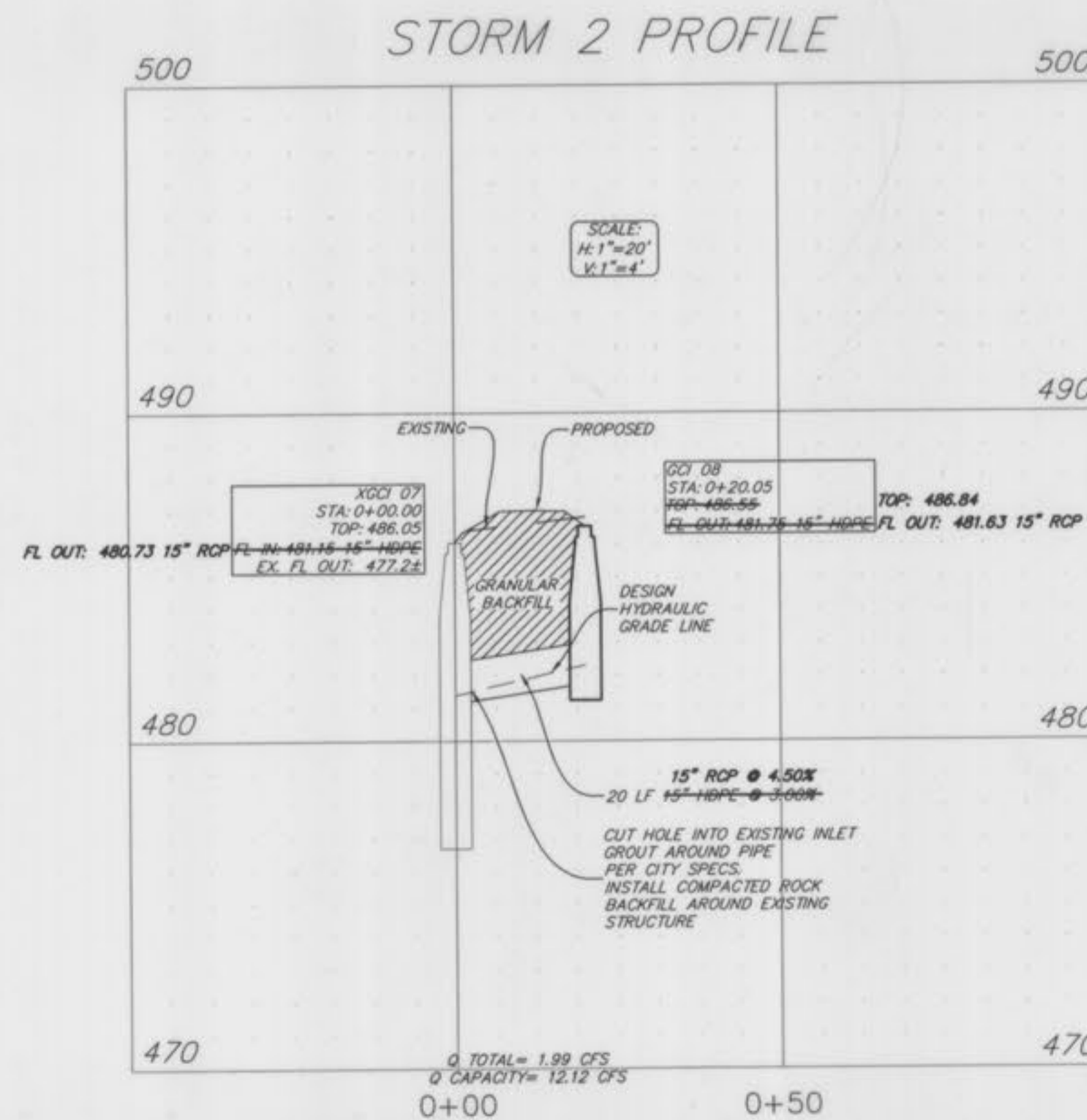
NOTES:
1. Project Benchmark: SC-06
NORTHING: 1083358.93
EASTING: 777759.35
ELEVATION: 526.93'



STORM 1 PROFILE



STORM 2 PROFILE



ISSUE	DATE	REMARKS
1	8-24-2010	Storm Sewer As-Built

ALDI INC.
c/o Jerry Bextermiller
475 Pearl Drive
O'Fallon, MO 63366
(636) 699-8849



LEWIS-BADE, INC.
101 E. Walton St.
Warrenton, Missouri 63383
(636) 456-2615 (FAX) 456-7252
Professional Land Surveyor
and Professional Engineer



ALDI'S
WAREHOUSE & OFFICE
STORM SEWER AS-BUILT

PROJECT NO:	09075
DESIGNED BY:	Bart
DRAWN BY:	Brandon
CHECKED BY:	L.P.B.
SHEET NO:	1
OF	1

F:\2009\09075 - ALDI PARKING LOT AS-BUILTS 8-17-10.DWG 9/10/2010 9:15:20 AM