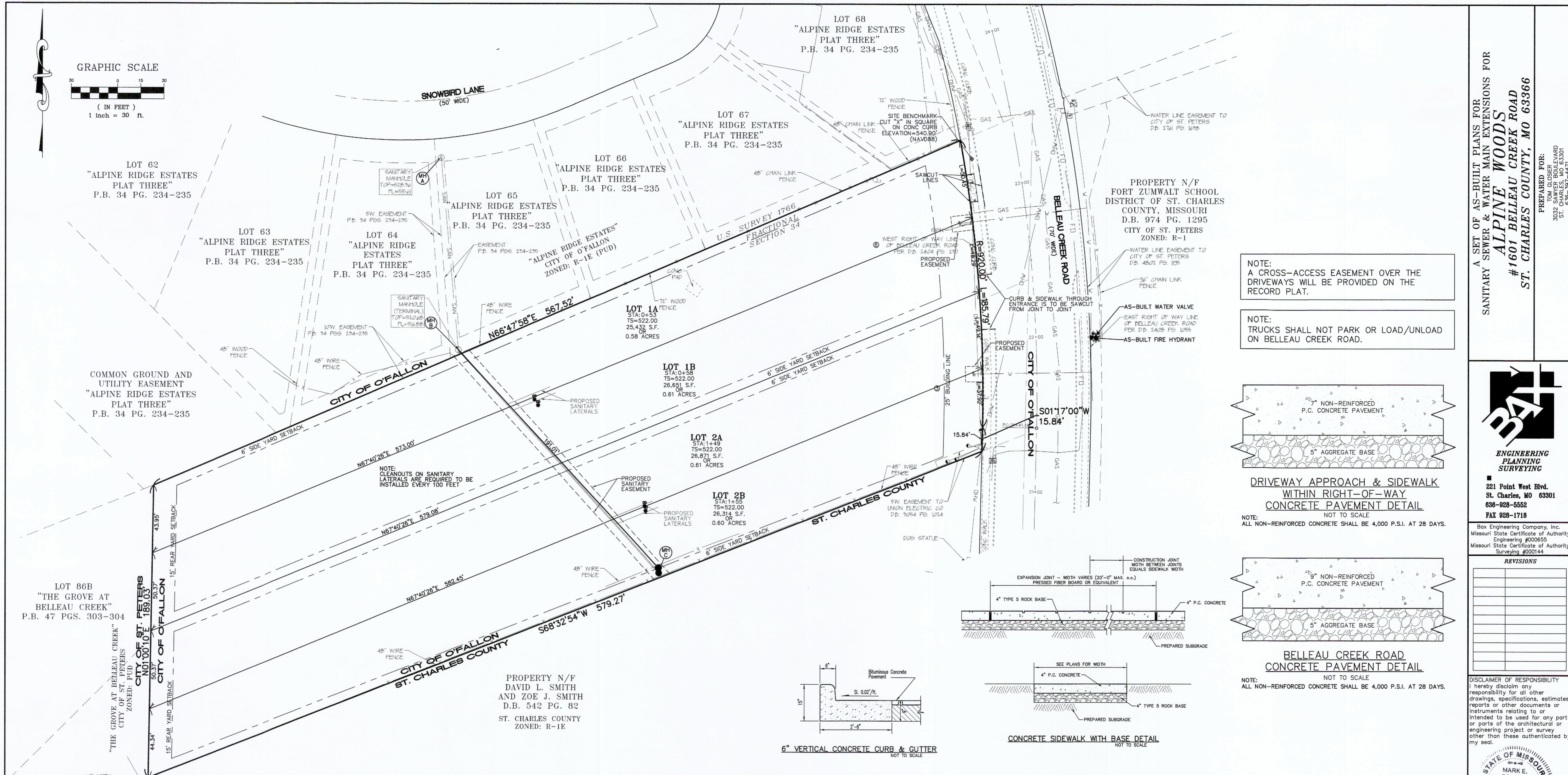
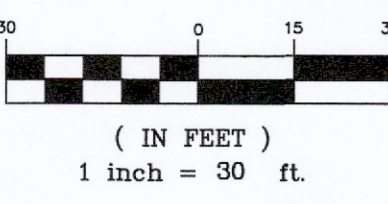
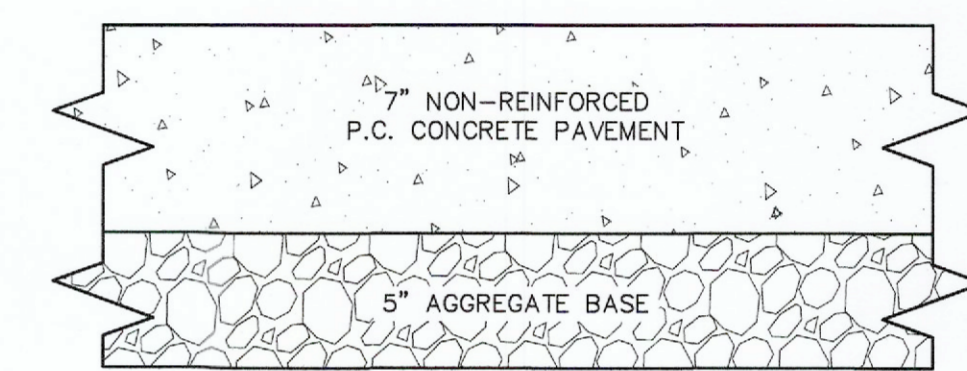


GRAPHIC SCALE

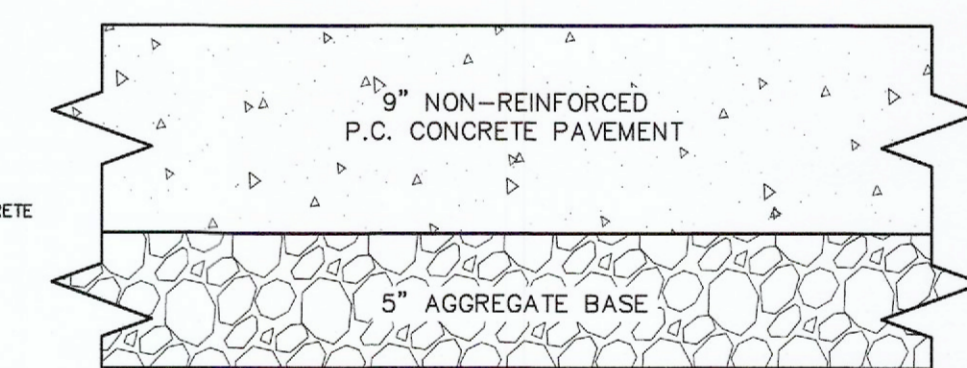


NOTE:
A CROSS-ACCESS EASEMENT OVER THE DRIVEWAYS WILL BE PROVIDED ON THE RECORD PLAT.

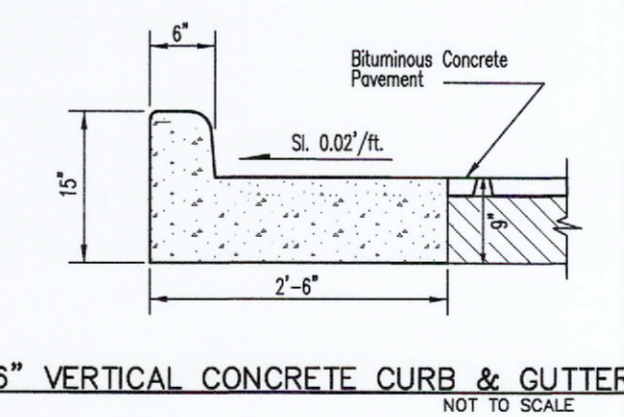
NOTE:
TRUCKS SHALL NOT PARK OR LOAD/UNLOAD ON BELLEAU CREEK ROAD.



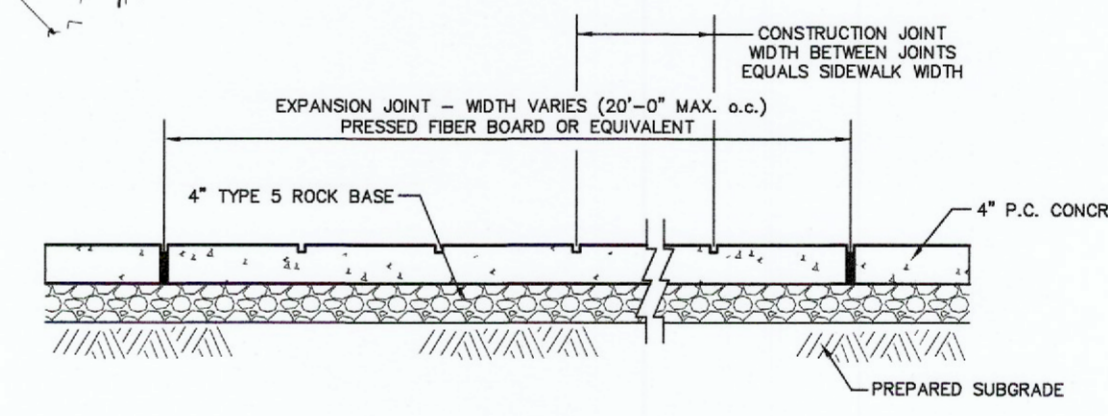
DRIVEWAY APPROACH & SIDEWALK WITHIN RIGHT-OF-WAY CONCRETE PAVEMENT DETAIL
NOT TO SCALE



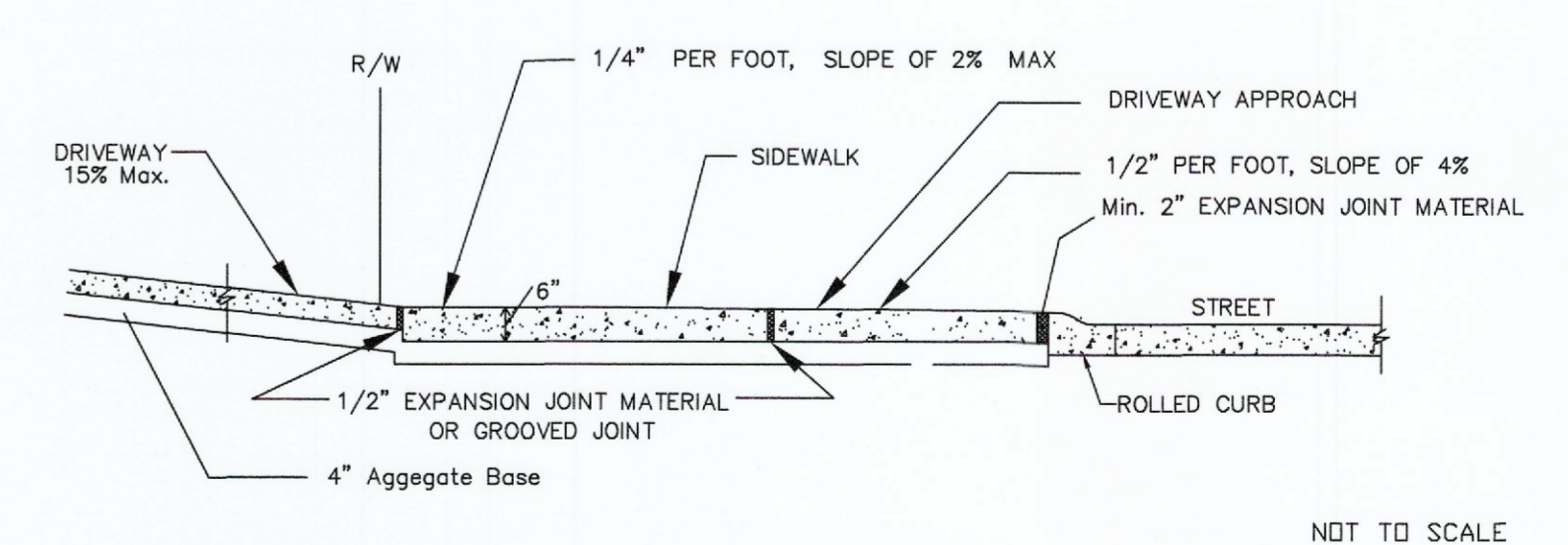
BELLEAU CREEK ROAD CONCRETE PAVEMENT DETAIL
NOT TO SCALE



6\"/>

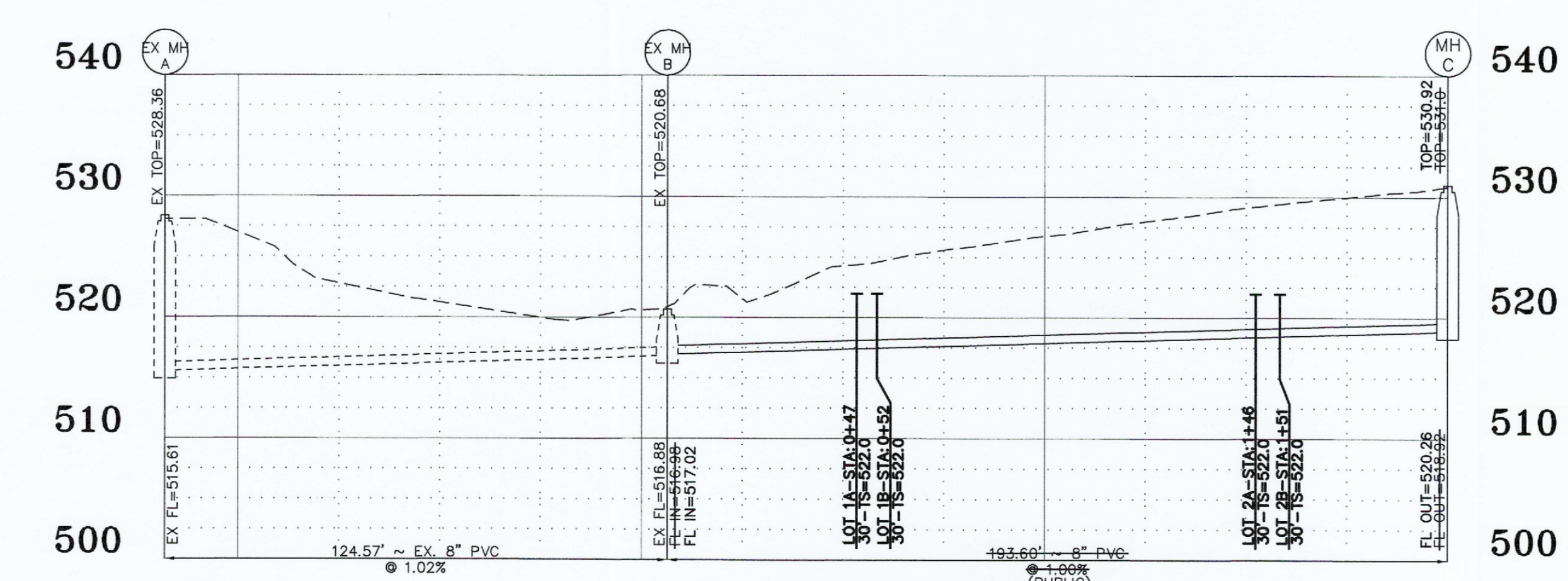


CONCRETE SIDEWALK WITH BASE DETAIL
NOT TO SCALE



- NOTES:
- All driveway entrances shall be seven (7) inches P.C.C. in depth from the curb to the property line.
 - All driveway approaches constructed in conjunction with sidewalk shall give the appearance that the sidewalk is continuous. That portion of the driveway approach that doubles as a sidewalk shall have a one-fourth (1/4) inch per foot cross slope the same as the abutting sidewalk.
 - A two (2) inch expansion joint is required between the street and driveway approach.

DRIVEWAY APPROACH DETAIL
NOT TO SCALE



SANITARY SEWER PROFILE
SCALES:
HORIZ. 1"=30'
VERT. 1"=10'

A SET OF AS-BUILT PLANS FOR
SANITARY SEWER & WATER MAIN EXTENSIONS FOR
ALPINE WOODS
#1601 BELLEAU CREEK ROAD
ST. CHARLES COUNTY, MO 63366

**ENGINEERING
PLANNING
SURVEYING**

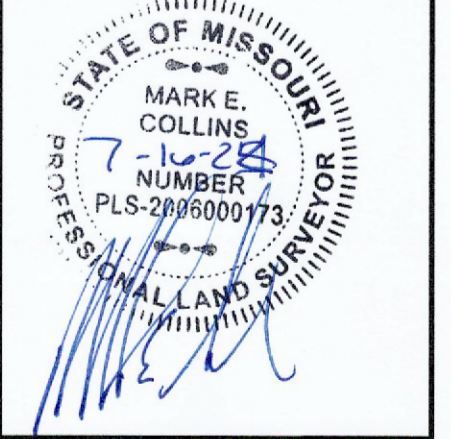
221 Point West Blvd.
St. Charles, MO 63301
636-928-5552
FAX 928-1718

Box Engineering Company, Inc.
Missouri State Certificate of Authority
Engineering #000555
Missouri State Certificate of Authority
Surveying #000144

REVISIONS

NO.	DATE	DESCRIPTION

DISCLAIMER OF RESPONSIBILITY
I hereby disclaim any responsibility for all other drawings, specifications, estimates, reports or other documents or instruments relating to or intended to be used for any part or parts of the architectural or engineering project or survey other than those authenticated by my seal.



07/16/2024
DATE
22-18692
PROJECT NUMBER
18692 ASB
FILE NAME
CEM
DRAWN
JBS MEC
DESIGNED CHECKED

SITE PLAN

C-3

