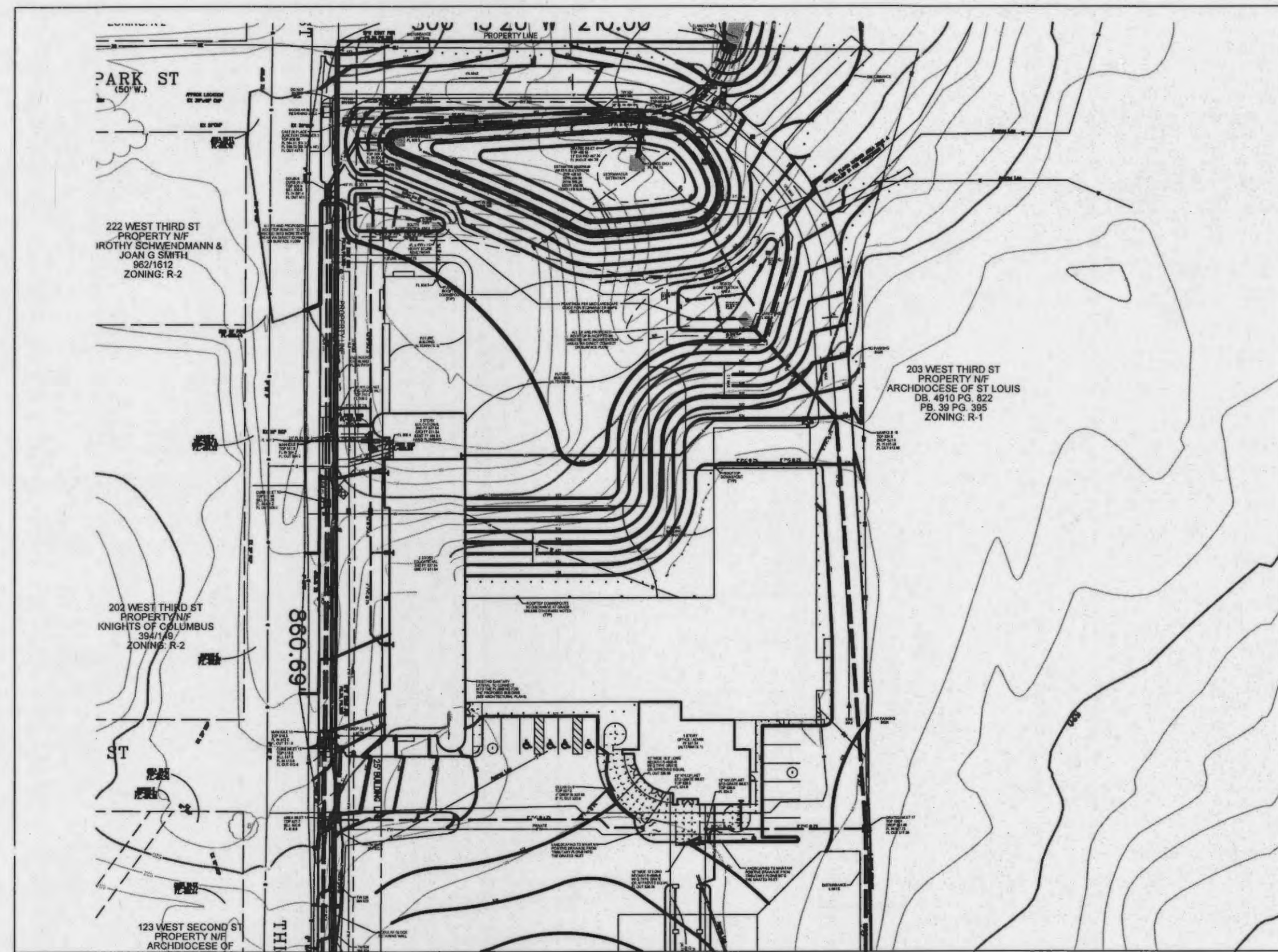


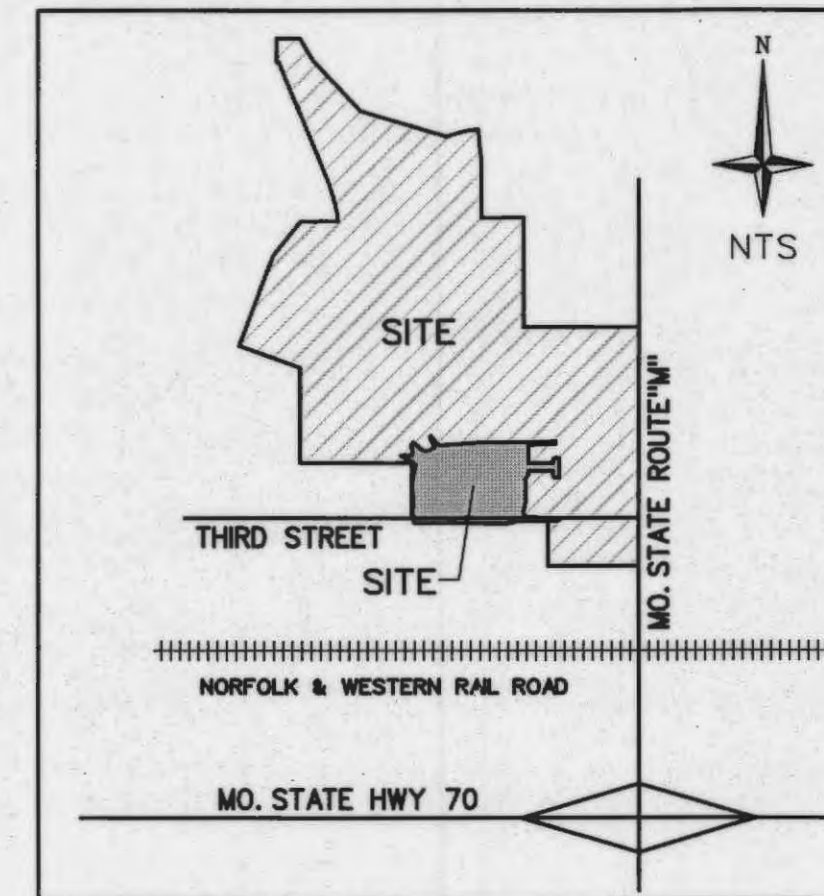
AS-BUILTS A SITE PLAN FOR ASSUMPTION PARISH SCHOOL EXPANSION AND RENOVATION

Legal Description

A TRACT OF LAND BEING PART OF KREKELS ADDITION,
PLAT BOOK 2 PAGE 39, AND SECTION 20, TOWNSHIP 47 NORTH,
RANGE 3 EAST OF FIFTH PRINCIPAL MERIDIAN,
CITY OF O'FALLON, ST. CHARLES COUNTY, MISSOURI



Plan View



Location Map

Legend

—UC—	EXISTING UNDERGROUND CABLE TV
—UT—	EXISTING UNDERGROUND TELEPHONE
—UE—	EXISTING UNDERGROUND ELECTRIC
—OU—	EXISTING OVERHEAD UTILITY WIRES
—G—	EXISTING GAS MAIN
—W—	EXISTING WATER MAIN
—F—	PROPOSED FORCE MAIN
—F—	EXISTING FORCE MAIN
—	BUILDING LINE
—	EXISTING SANITARY SEWER
—	PROPOSED SANITARY SEWER
—	EXISTING STORM SEWER
—	PROPOSED STORM SEWER
—510—	EXISTING CONTOUR
—520—	PROPOSED CONTOUR
—	EXISTING TREE LINE
—	PROPOSED TREE LINE
—	SILTATION CONTROL
—	EX HIGH WATER OR DITCH
—	GRADE BREAK
—	STREET SIGN
—	SWALE
—	DIRECTION OF SHEET FLOW
—	CLEARING AND GRADING LIMITS
—	FIRE HYDRANT
—	LIGHT STANDARD
—	VALVE
—	LATERAL
—	ADDRESS
—	TREE
—	SANITARY SEWER DESIGNATOR
—	STORM SEWER DESIGNATOR
—	AIR RELIEF VALVE
—	AIR RELIEF VALVE & C.O.

FLOOD PLAIN NOTE PER THE FLOOD INSURANCE RATE MAP (F.I.R.M.), MAP NUMBER 29183C0230 F, EFFECTIVE DATE MARCH 17, 2003 THE TRACT OF LAND LIES PARTIALLY WITHIN AREAS DESIGNATED AS UNSHADED ZONE 'X' AND ZONE 'A'.

City approval of any construction site plans does not mean that any building can be constructed on the lots without meeting the building setbacks as required by the zoning codes. All installations and construction shall conform to the approved engineering drawings. However, if the developer chooses to make minor modifications in design and/or specifications during construction, they shall make such changes at their own risk, without any assurance that the City Engineer will approve the completed installation or construction. It shall be the responsibility of the developer to notify the City Engineer of any changes from the approved drawings. The developer may be required to correct the installed improvement so as to conform to the approved engineering drawings. The developer may request a letter from the Construction Inspection Division regarding any field changes approved by the City Inspector. Lighting values will be reviewed on site prior to the final occupancy inspection.

Benchmarks

Project
USGS DESIGNATION-F149
ELEVATION - 542.88
STD tablet stamped F 149 1935, Top concrete post,
40 feet East of Main Street centerline, 30 feet North
of centerline of main tracks.

Site
BM #1 - ELEVATION - 510.65
PK Nail set near the centerline of Park Street, and
17' South of the centerline of Third Street.

BM #2 - ELEVATION - 515.81
60d Nail set 19' South of the centerline of Third
Street and 17' West of the centerline of Lincoln Street.

CALL MISSOURI ONE CALL SYSTEMS INC. TWO FULL
WORKING DAYS IN ADVANCE OF STARTING WORK



MISSOURI ONE-CALL
1-800-344-7483

Utility Contacts

Sanitary Sewer
City of O'Fallon
100 N. Main St.
O'Fallon, MO. 63366
Contact 636-281-2858

Water
City of O'Fallon
100 N. Main St.
O'Fallon, MO. 63366
636-281-2858

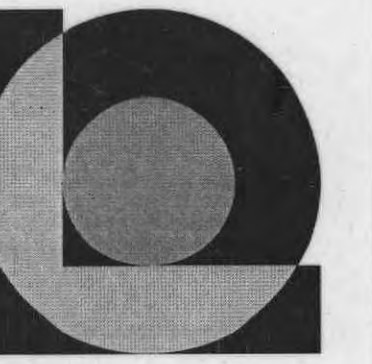
Storm Sewer
City of O'Fallon
100 N. Main St.
O'Fallon, MO. 63366
636-281-2858

Ameren UE
200 Callahan Road
Wentzville, MO. 63385
636-630-8312

Gas
Laclede Gas Company
6400 Graham Road
St. Louis, MO. 63134
314-522-2297

Telephone
Century Tel
1151 Century Tel Dr.
Wentzville, MO. 63385
636-332-7261

Fire Department
O'Fallon Fire Protection District
119 E. Elm St.
O'Fallon, MO. 63366
636-272-9493



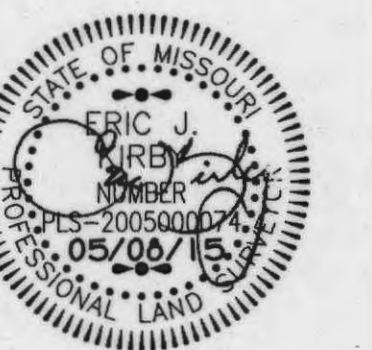
LePIQUE & ORNE
ARCHITECTS, INC
Established 1916

701 N. Fifth Street
St. Charles, MO 63301
Phone 636-947-0099
Fax 636-947-8700

ENGINEERS
LAND PLANNING
TRANSPORTATION
CONSTRUCTION MANAGEMENT

VOLZ
Incorporated

10849 Indian Head Indl. Blvd.
St. Louis, Missouri 63132
314.890.1250 Fax
www.volz.com
Authority #203



Eric J. Kirby
Professional Land Surveyor
PLS# 200500074

ASSUMPTION PARISH SCHOOL
EXPANSION AND RENOVATION

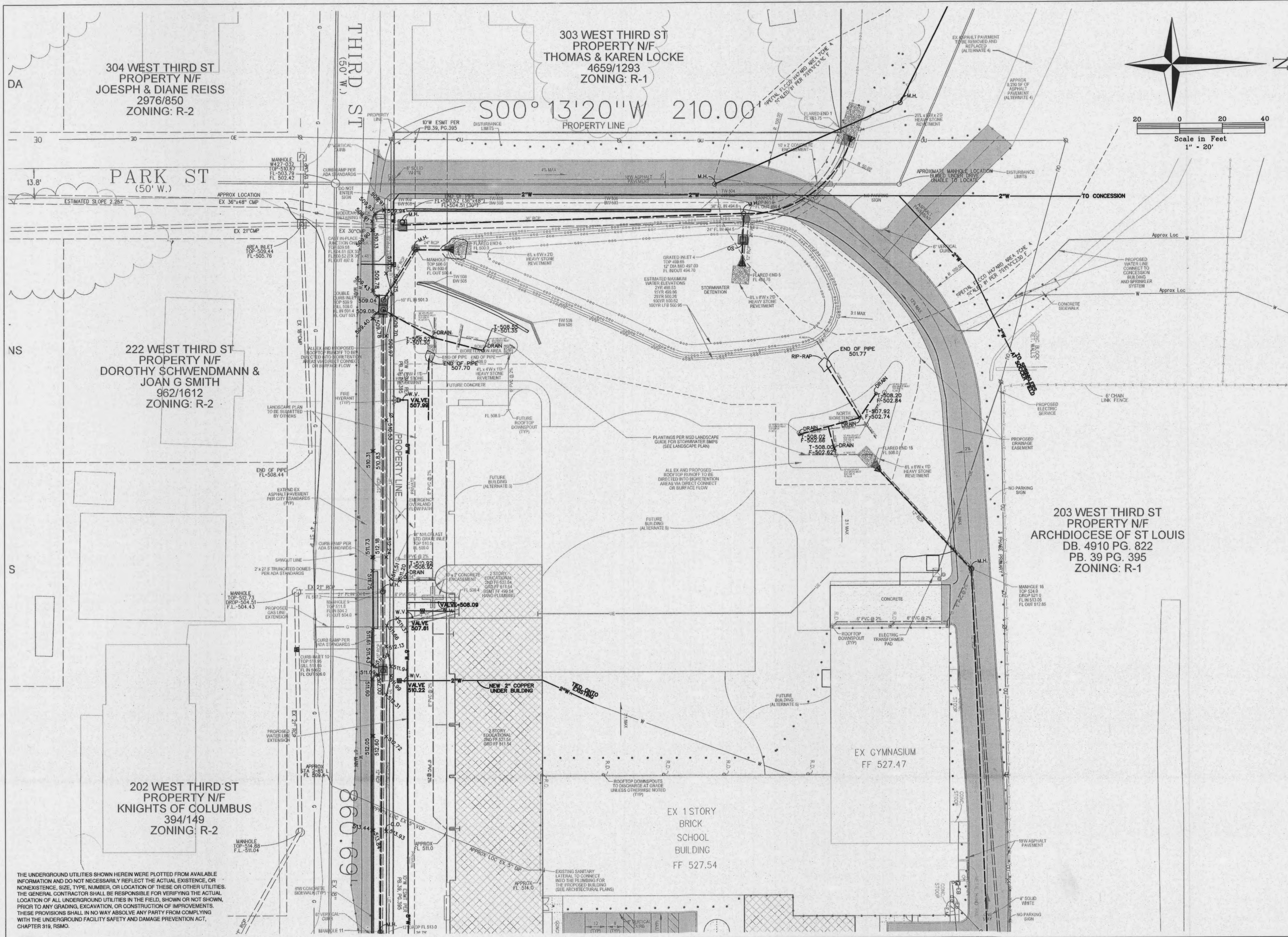
COVER SHEET - AS-BUILT

P&Z No.
Approved

City No.

Page No.

C1



THE UNDERGROUND UTILITIES SHOWN HEREIN WERE PLOTTED FROM AVAILABLE INFORMATION AND DO NOT NECESSARILY REFLECT THE ACTUAL EXISTENCE, OR NONEXISTENCE, SIZE, TYPE, NUMBER, OR LOCATION OF THESE OR OTHER UTILITIES. THE GENERAL CONTRACTOR SHALL BE RESPONSIBLE FOR VERIFYING THE ACTUAL LOCATION OF ALL UNDERGROUND UTILITIES IN THE FIELD, SHOWN OR NOT SHOWN, PRIOR TO ANY GRADING, EXCAVATION, OR CONSTRUCTION OF IMPROVEMENTS. THESE PROVISIONS SHALL IN NO WAY ABSOLVE ANY PARTY FROM COMPLYING WITH THE UNDERGROUND FACILITY SAFETY AND DAMAGE PREVENTION ACT, CHAPTER 319, RSMO.



LePIQUE & ORNE
ARCHITECTS, INC
 Established 1916
 701 N. Fifth Street
 St. Charles, MO 63301
 Phone 636-947-0099
 Fax 636-947-8700

ENGINEERS
 AND SURVEYING
 LAND SURVEYING
 TRANSPORTATION
 CONST. MANAGEMENT

VOLZ
 Incorporated

10849 Indian Head Indl. Blvd.
 St. Louis, Missouri 63132
 314.426.6212 Main
 314.890.1250 Fax
 www.volz.com
 Authority #2003

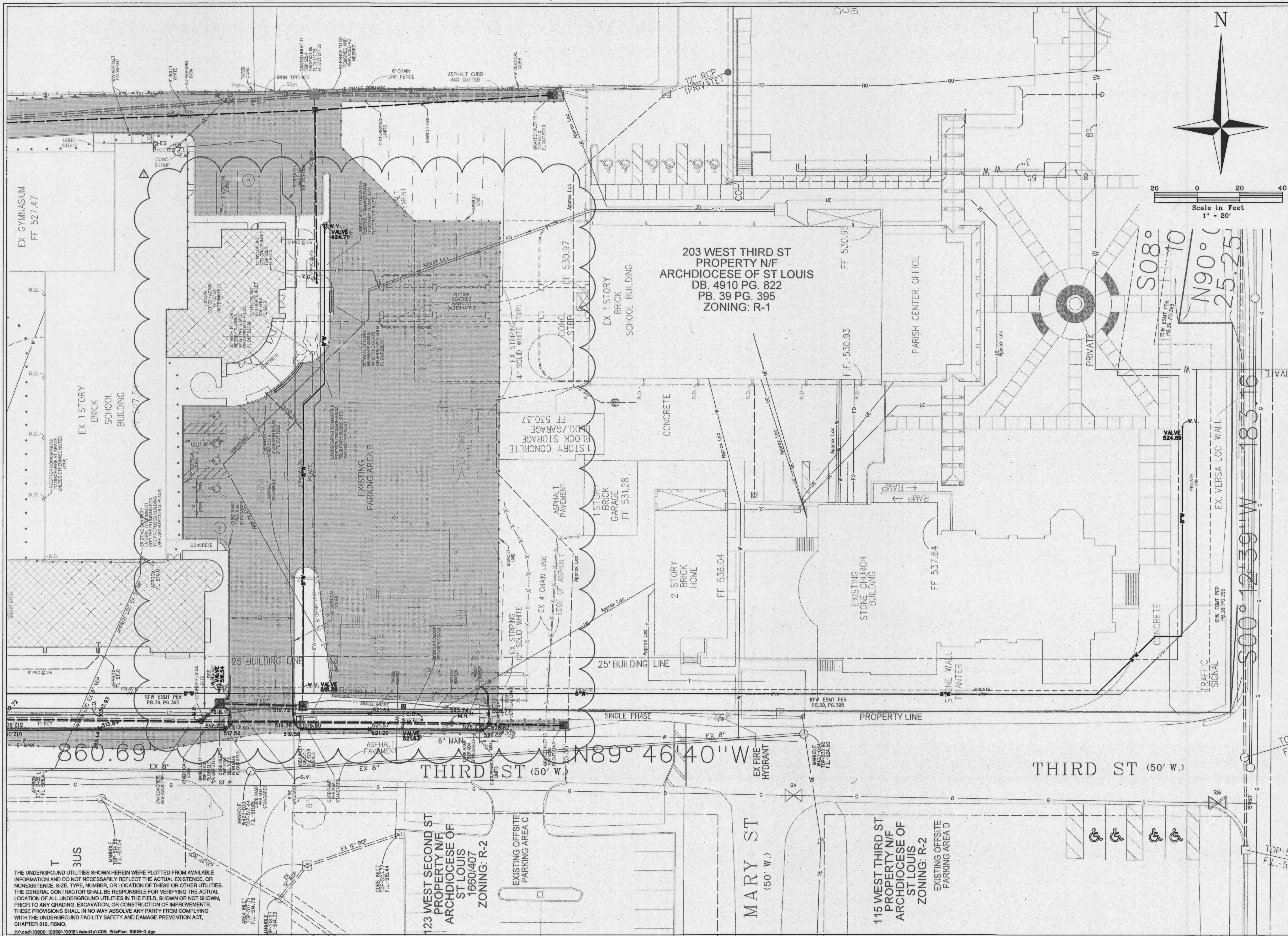


Eric J. Kirby
 Professional Land Surveyor
 PLS# 200500074

ASSUMPTION PARISH SCHOOL
EXPANSION AND RENOVATION

SITE PLAN - ASBUILT

P&Z No. Approved
 City No.
 Page No.
C4



LePIQUE & ORNE ARCHITECTS, INC
 Established 1916
 701 N. Fifth Street
 St. Charles, MO 63301
 Phone 636-947-0099
 Fax 636-947-8700

VOLZ Incorporated
 ENGINEERS
 LAND PLANNING
 LAND SURVEYING
 TRANSPORTATION
 CONST. MANAGEMENT
 10849 Indian Head Ind'l. Blvd.
 St. Louis, Missouri 63132
 314.990.1250 Fax
 314.990.1212
 Authority #203

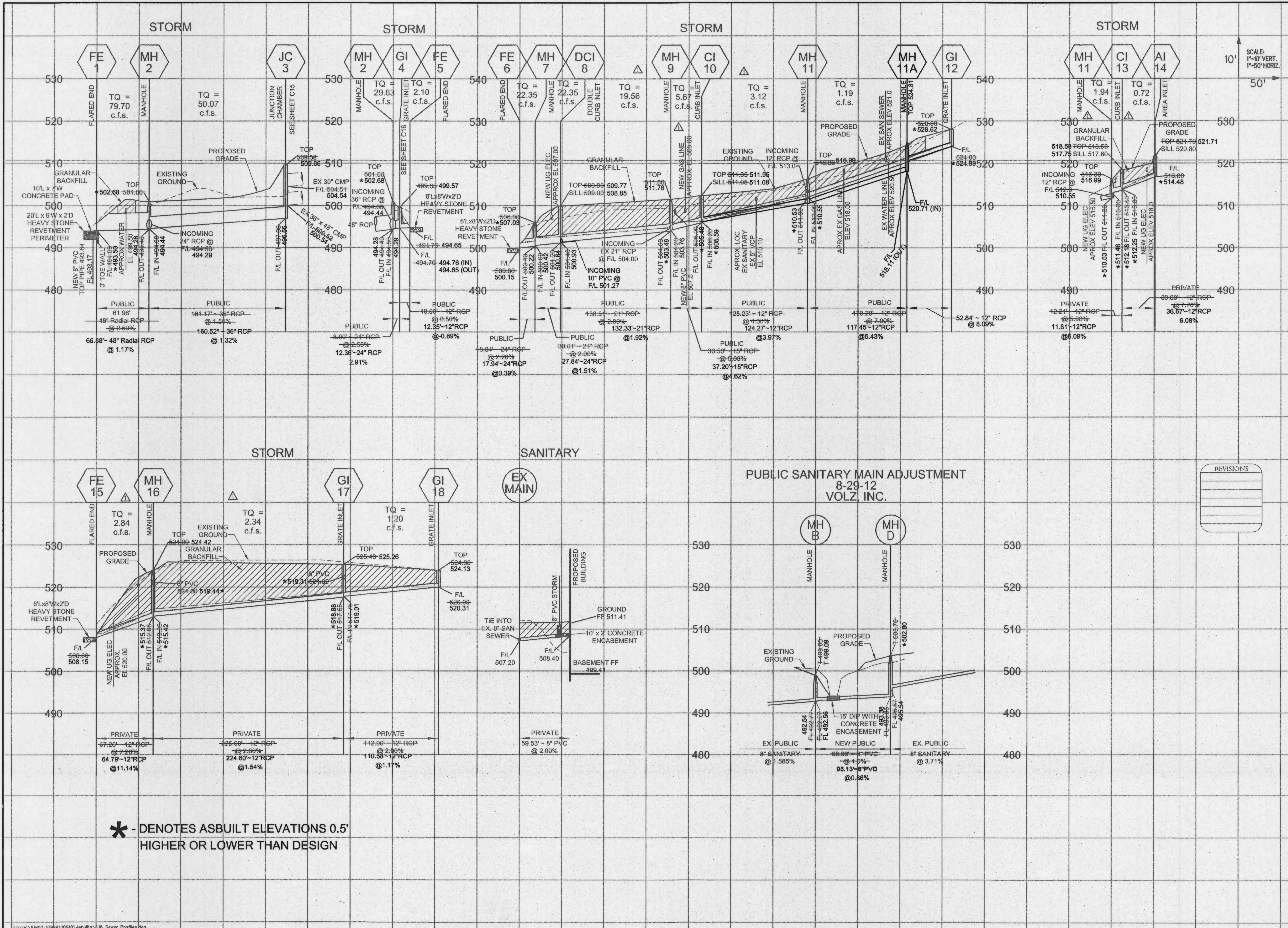


Eric J. Kirby
 Professional Land Surveyor
 PLS# 2005000074

**ASSUMPTION PARISH SCHOOL
 EXPANSION AND RENOVATION**
 SITE PLAN - ASBUILTS

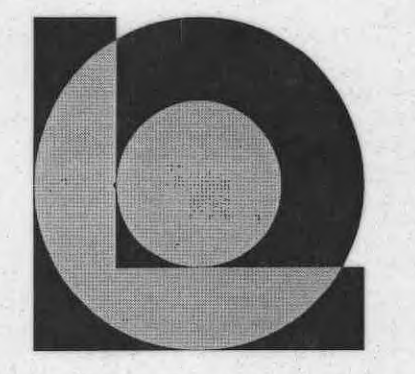
P&Z No. 1102.05.02
 Approved 3-01-12
 City No.
 Page No.
C5

THE UNDERGROUND UTILITIES SHOWN HEREIN WERE PLOTTED FROM AVAILABLE INFORMATION AND DO NOT NECESSARILY REFLECT THE ACTUAL EXISTENCE, OR NONEXISTENCE, SIZE, TYPE, NUMBER, OR LOCATION OF THESE OR OTHER UTILITIES. THE GENERAL CONTRACTOR SHALL BE RESPONSIBLE FOR VERIFYING THE ACTUAL LOCATION OF ALL UNDERGROUND UTILITIES IN THE FIELD, SHOWN OR NOT SHOWN, PRIOR TO ANY GRADING, EXCAVATION, OR CONSTRUCTION OF IMPROVEMENTS. THESE PROVISIONS SHALL IN NO WAY ABSOLVE ANY PARTY FROM COMPLYING WITH THE UNDERGROUND FACILITY SAFETY AND DAMAGE PREVENTION ACT, CHAPTER 319, RSMO.



* - DENOTES ASBUILT ELEVATIONS 0.5' HIGHER OR LOWER THAN DESIGN

NO.	DESCRIPTION



LePIQUE & ORNE ARCHITECTS, INC
 Established 1916
 701 N. Fifth Street
 St. Charles, MO 63301
 Phone 636-647-0099
 Fax 636-647-8700

VOLZ Incorporated
 ENGINEERS
 LAND PLANNING
 LAND SURVEYING
 TRANSPORTATION
 CONST. MANAGEMENT
 10849 Indian Head Indl. Blvd.
 St. Louis, Missouri 63132
 314.690.1250 Fax
 Authority #203



Eric J. Kirby
 Professional Land Surveyor
 PLS# 200500074

**ASSUMPTION PARISH SCHOOL
 EXPANSION AND RENOVATION**

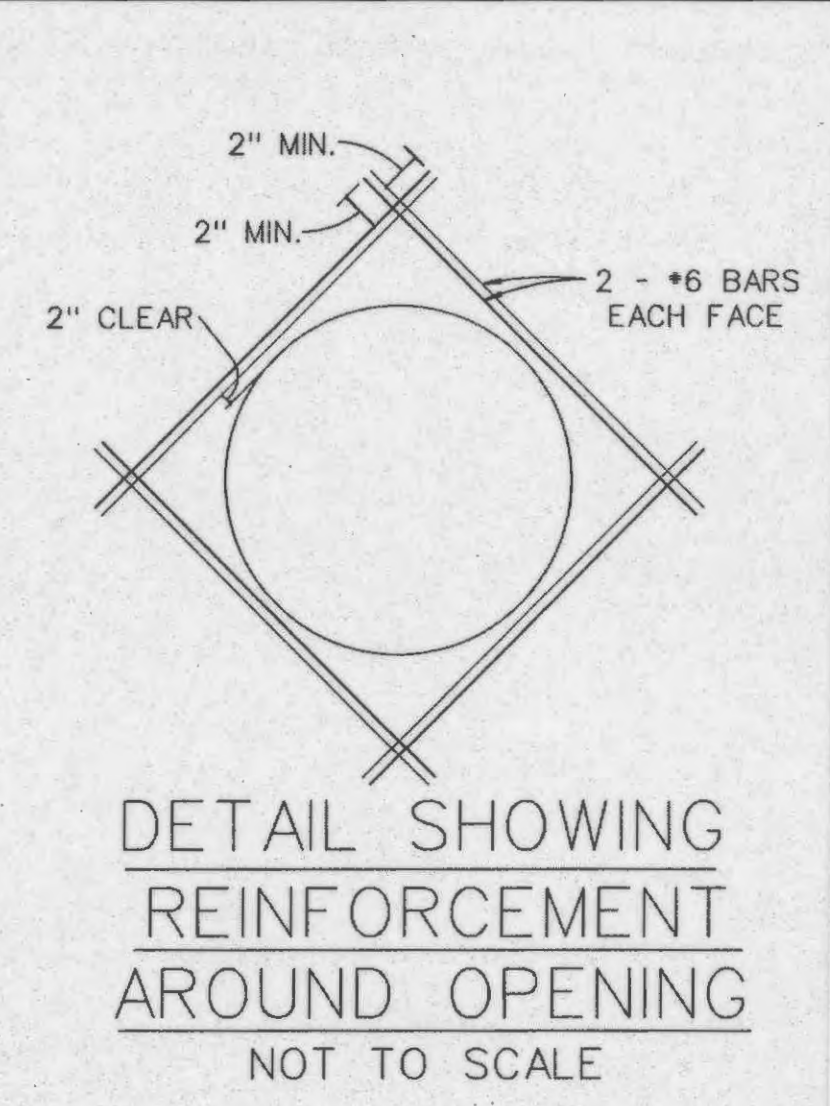
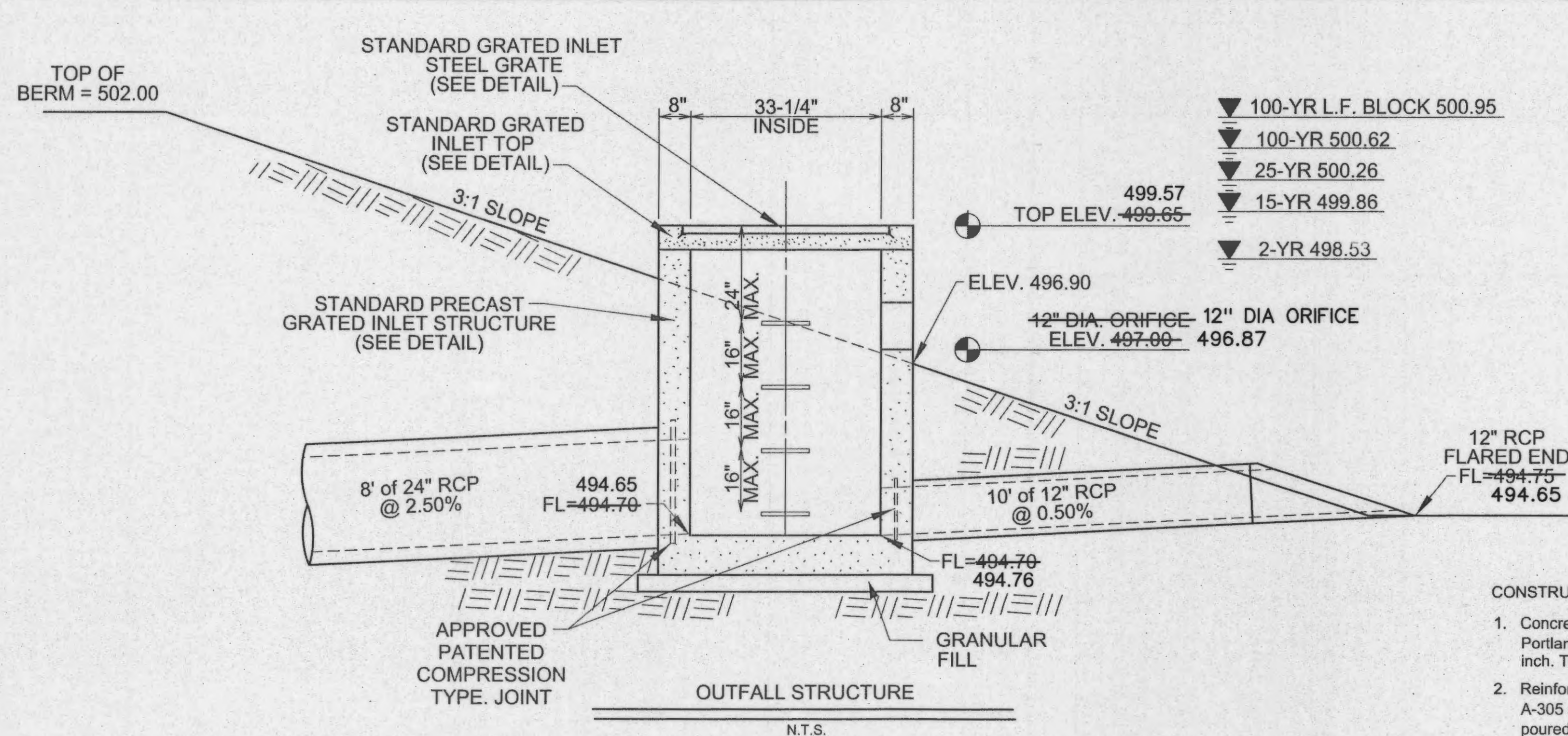
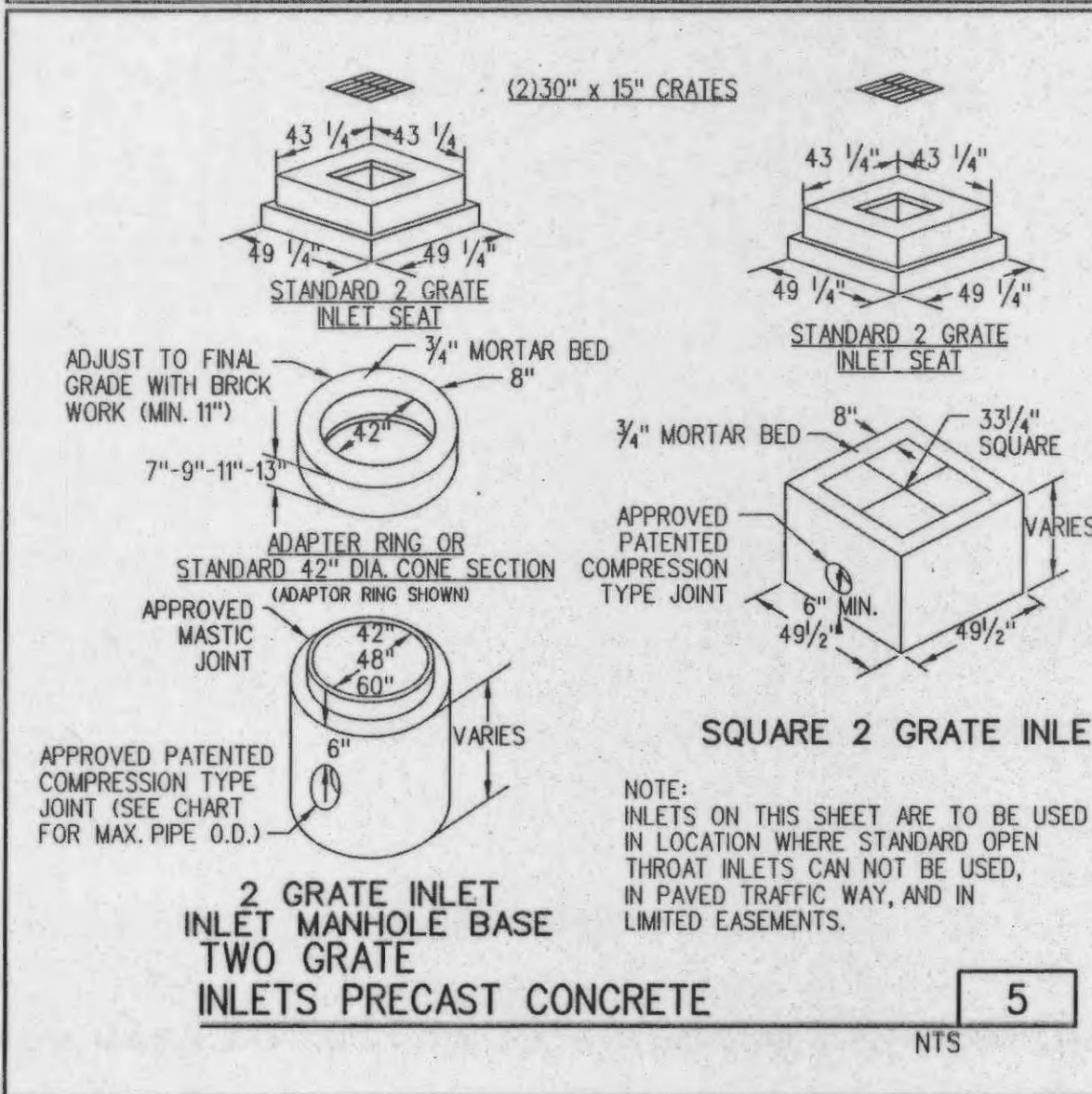
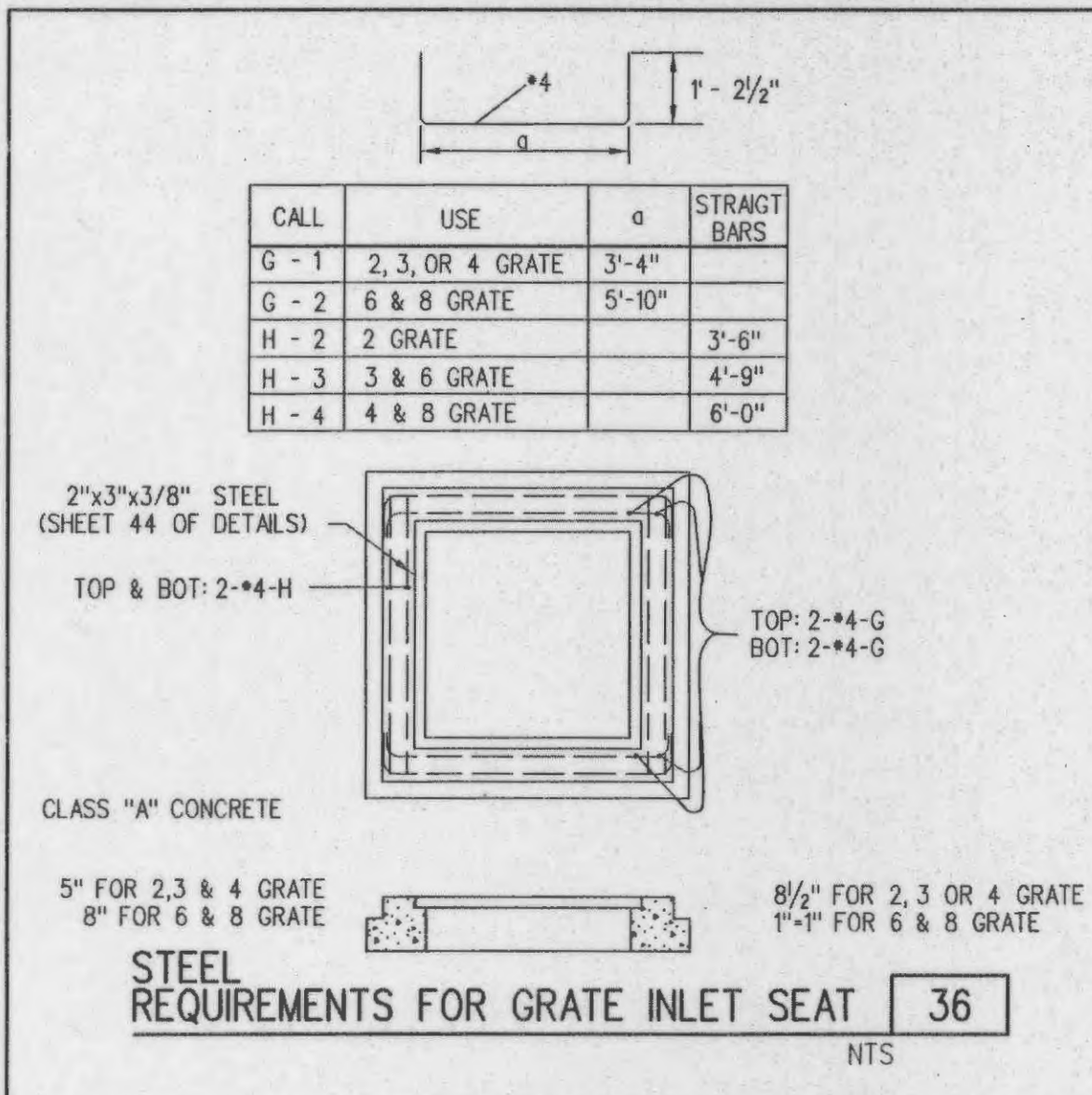
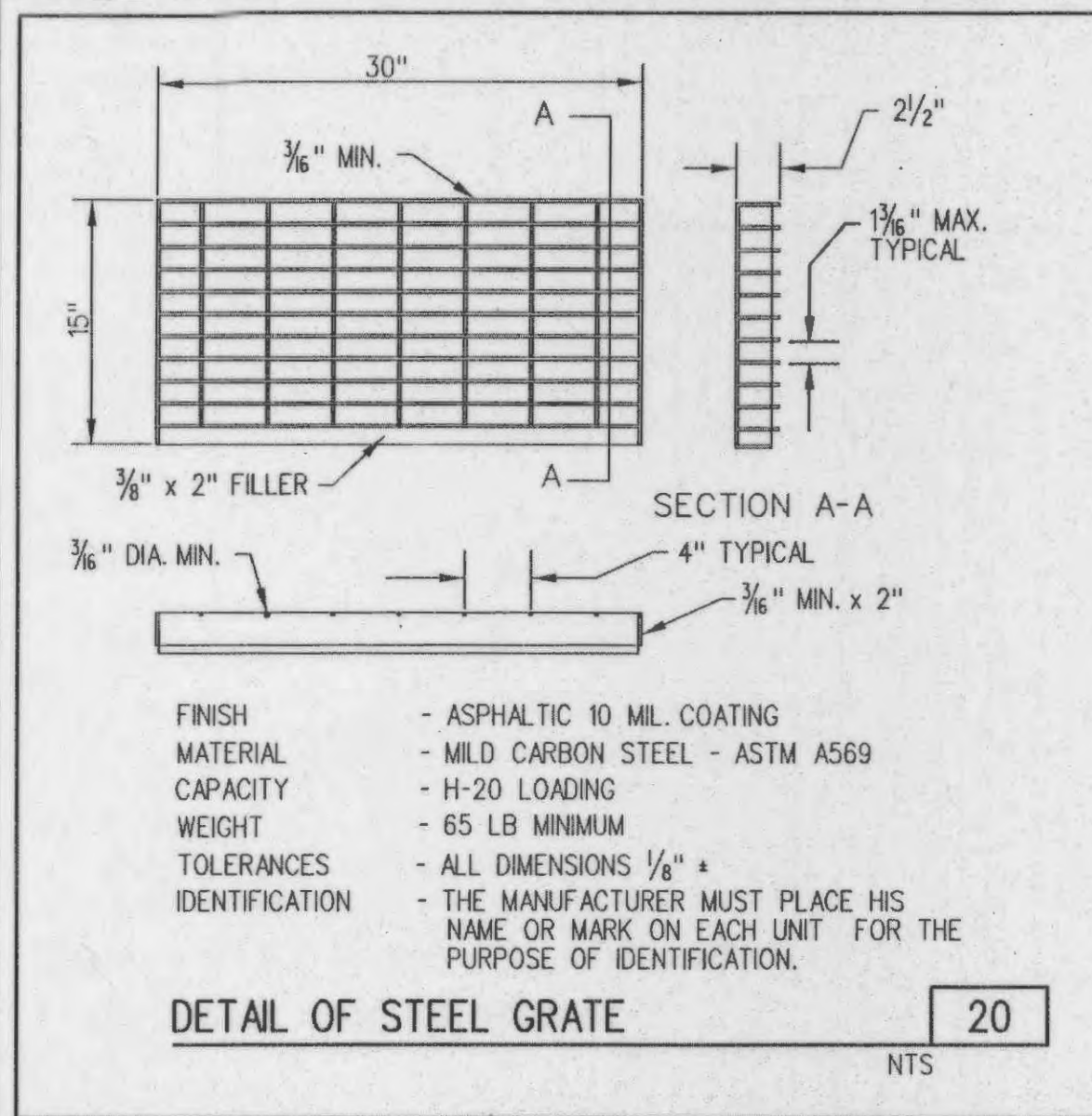
SEWER PROFILES - ASBUILTS

P&Z No.

City No.

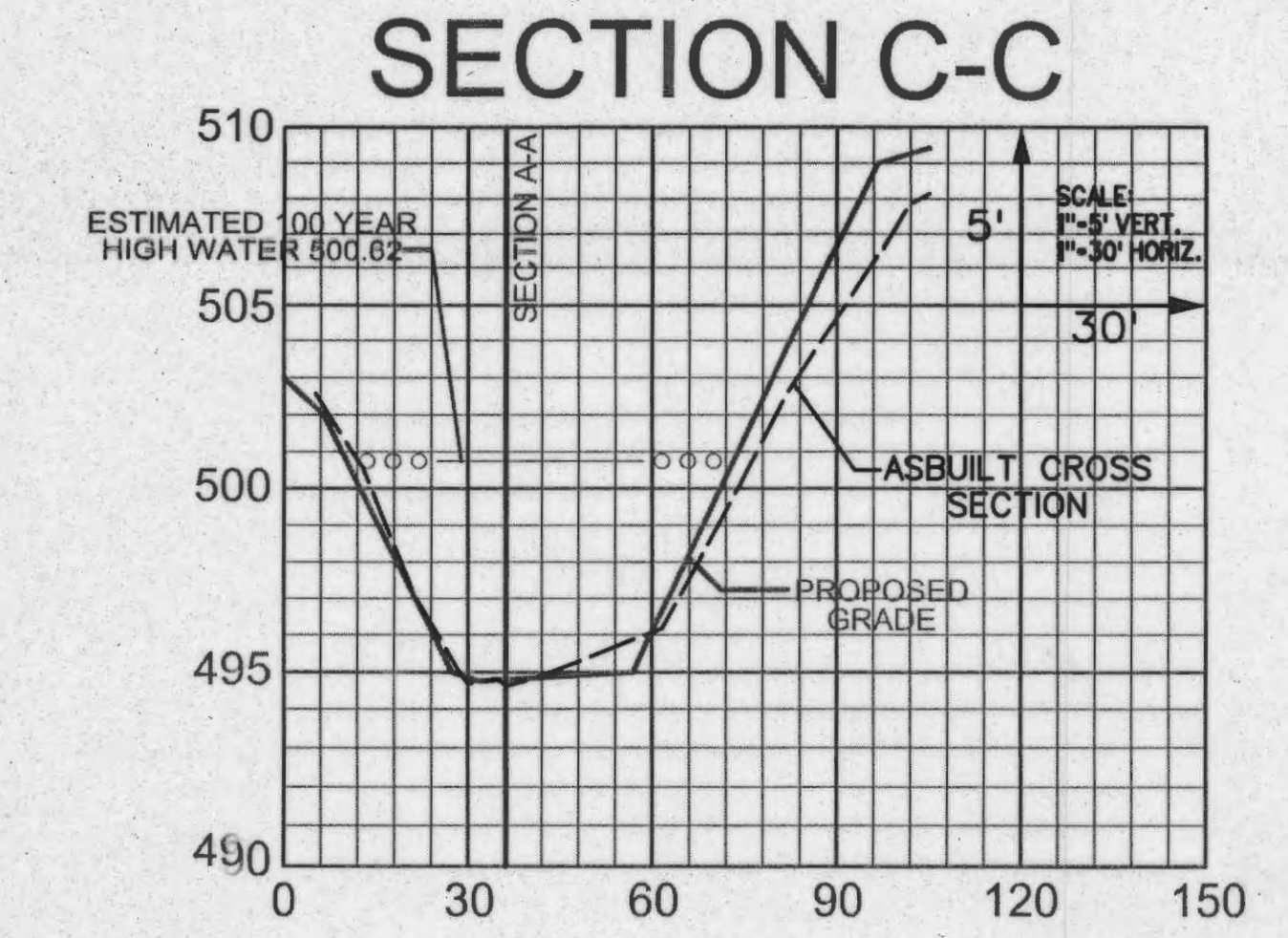
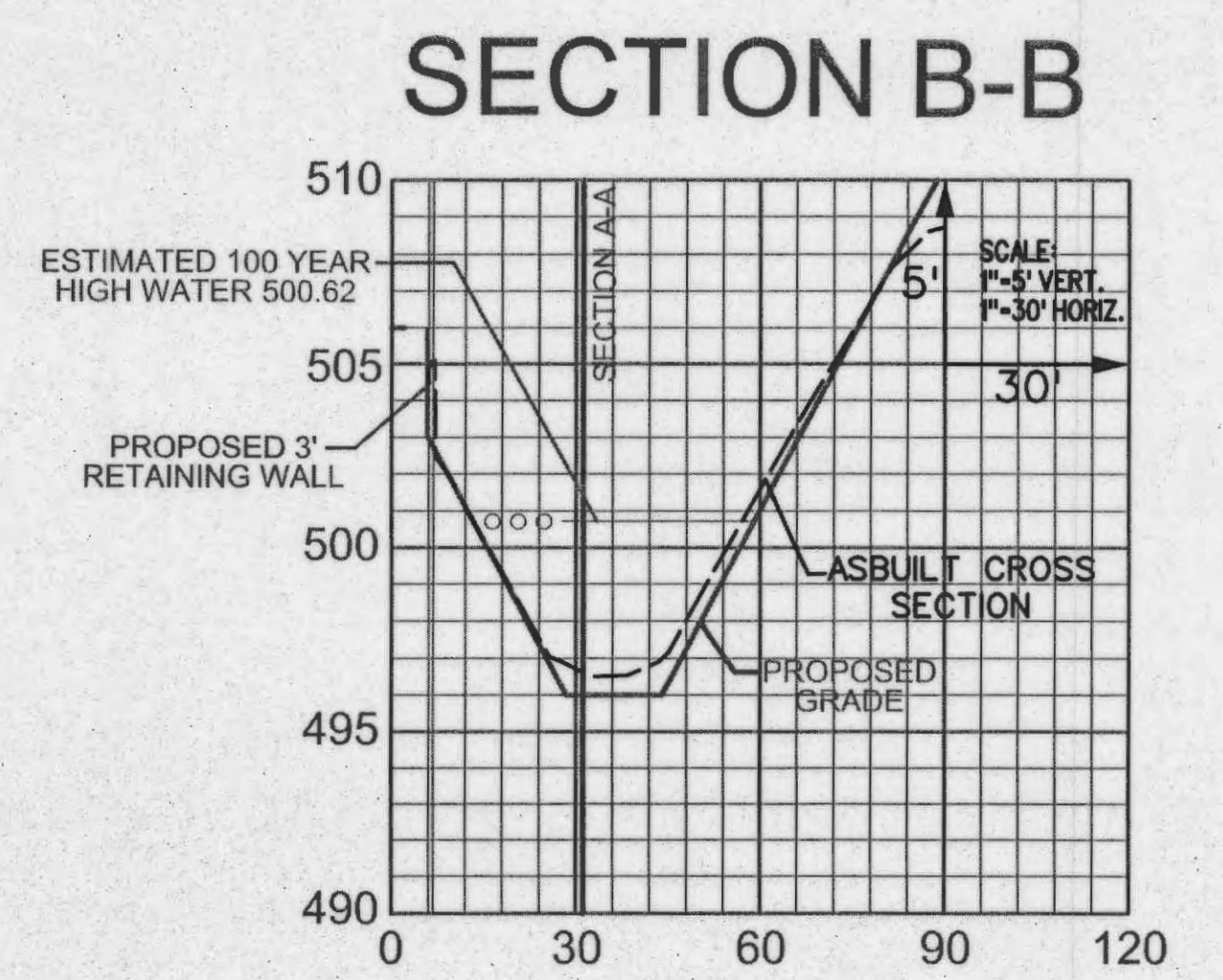
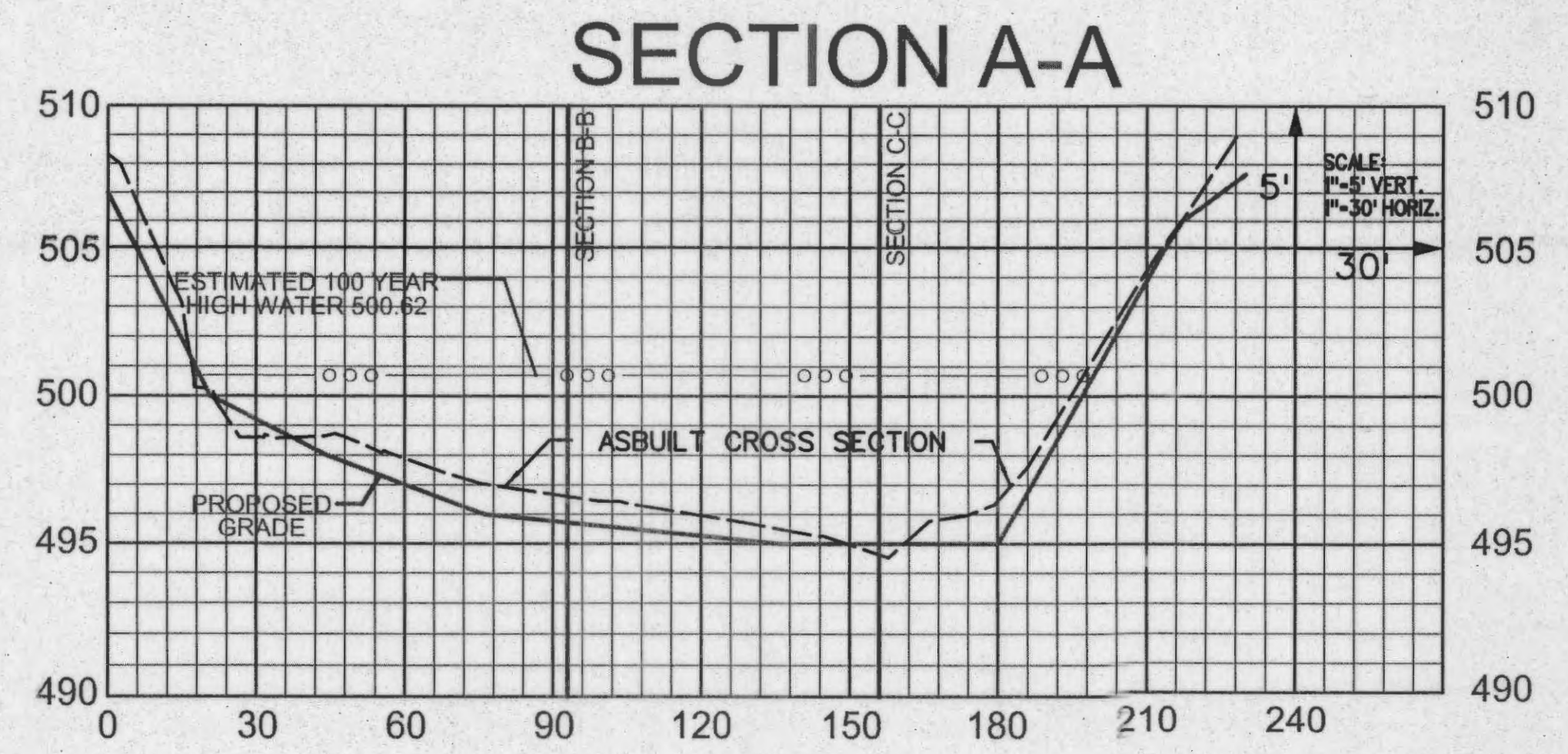
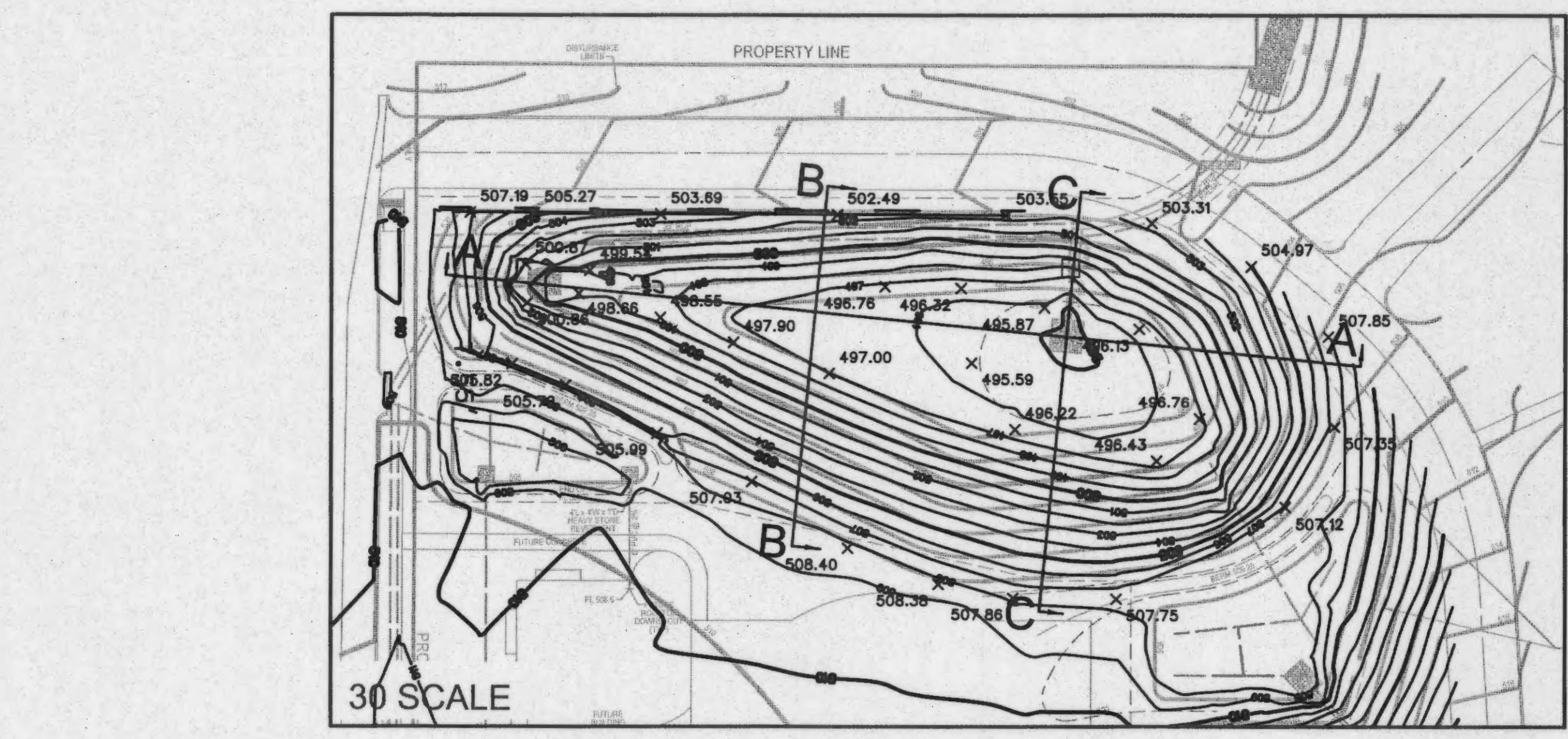
Page No.

C16



- CONSTRUCTION NOTES:**
- Concrete for the structure shall be "air entrained" and contain at least 6 sacks Class "A" Portland Cement per cubic yard. The concrete shall be placed at a slump of 4 inches ±1/2 inch. The concrete shall be proportioned and transported in accordance with ASTM C-94.
 - Reinforcing steel shall conform to ASTM C-615-60 with deformations conforming to ASTM A-305 and shall have a minimum cover of 2 inches except for 3 inches where concrete is poured against earth.
 - Laps and/or splices in reinforcing steel shall be a minimum of 30 bar diameters.
 - Keyed joints shown are to be 2-inch x 2-inch keyed construction joints.
 - fs = 24,000 psi.
 - fc = 3,750 psi.
 - All exposed edges to have a 3/4-inch chamfer.
 - Contractor to provide for bypass of stormwater during construction of structure.
 - All soil specifications shall be directed by soils engineer.

SHOP DRAWING REQUIRED. PLEASE CONTACT DESIGN ENGINEER FOR REVIEW AND APPROVAL BEFORE FABRICATION.



REVISIONS

5-3-12	CITY SUB
5-17-12	BID SET
6-29-12	CITY SUB

LePIQUE & ORNE ARCHITECTS, INC
 Established 1916
 701 N. Fifth Street
 St. Charles, MO 63301
 Phone 636-947-0099
 Fax 636-947-8700

VOLZ Incorporated
 ENGINEERS
 LAND PLANNING
 LAND SURVEYING
 TRANSPORTATION
 CONST. MANAGEMENT

10849 Indian Head Inlet Blvd.
 St. Charles, MO 63301
 St. 314.426.6212 Main
 www.volzinc.com
 Authority #203



Eric J. Kirby
 Professional Land Surveyor
 PLS# 200500074

ASSUMPTION PARISH SCHOOL EXPANSION AND RENOVATION
 DETENTION DETAILS - ASBULTS

P&Z No. Approved
 City No.
 Page No.
C18

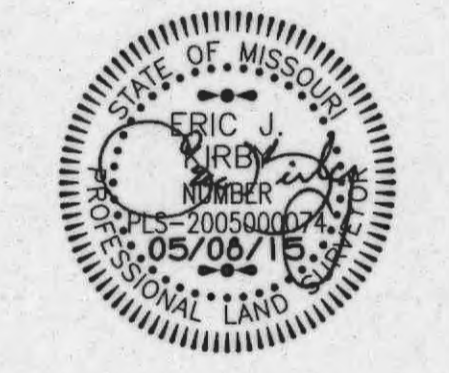
H:\cadd\10900-10189\10918\asbults\C18 Detention Details 10918-0.dgn

REVISIONS



LePIQUE & ORNE ARCHITECTS, INC
 Established 1916
 701 N. Fifth Street
 St. Charles, MO 63301
 Phone 636-947-0099
 Fax 636-947-8700

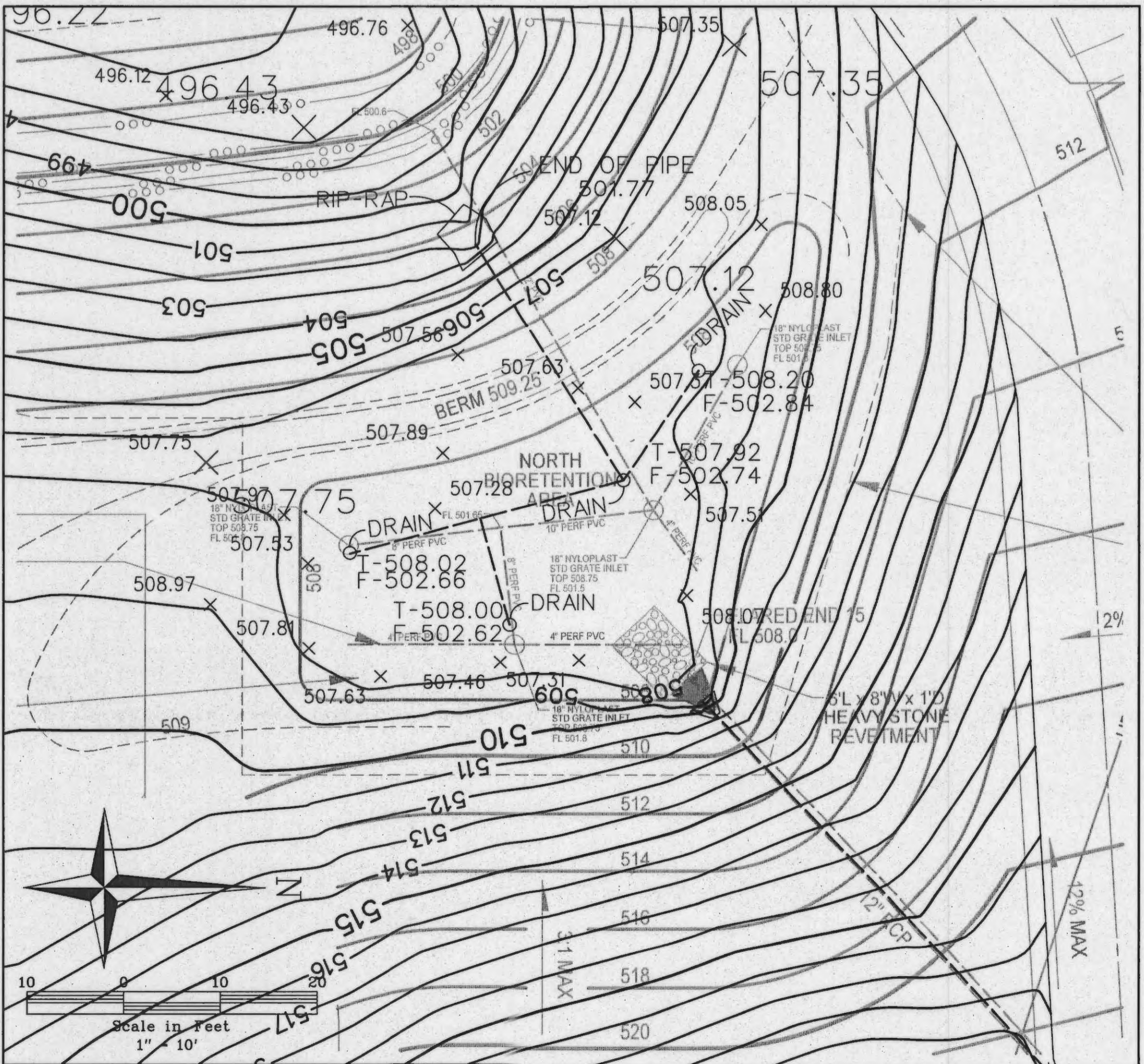
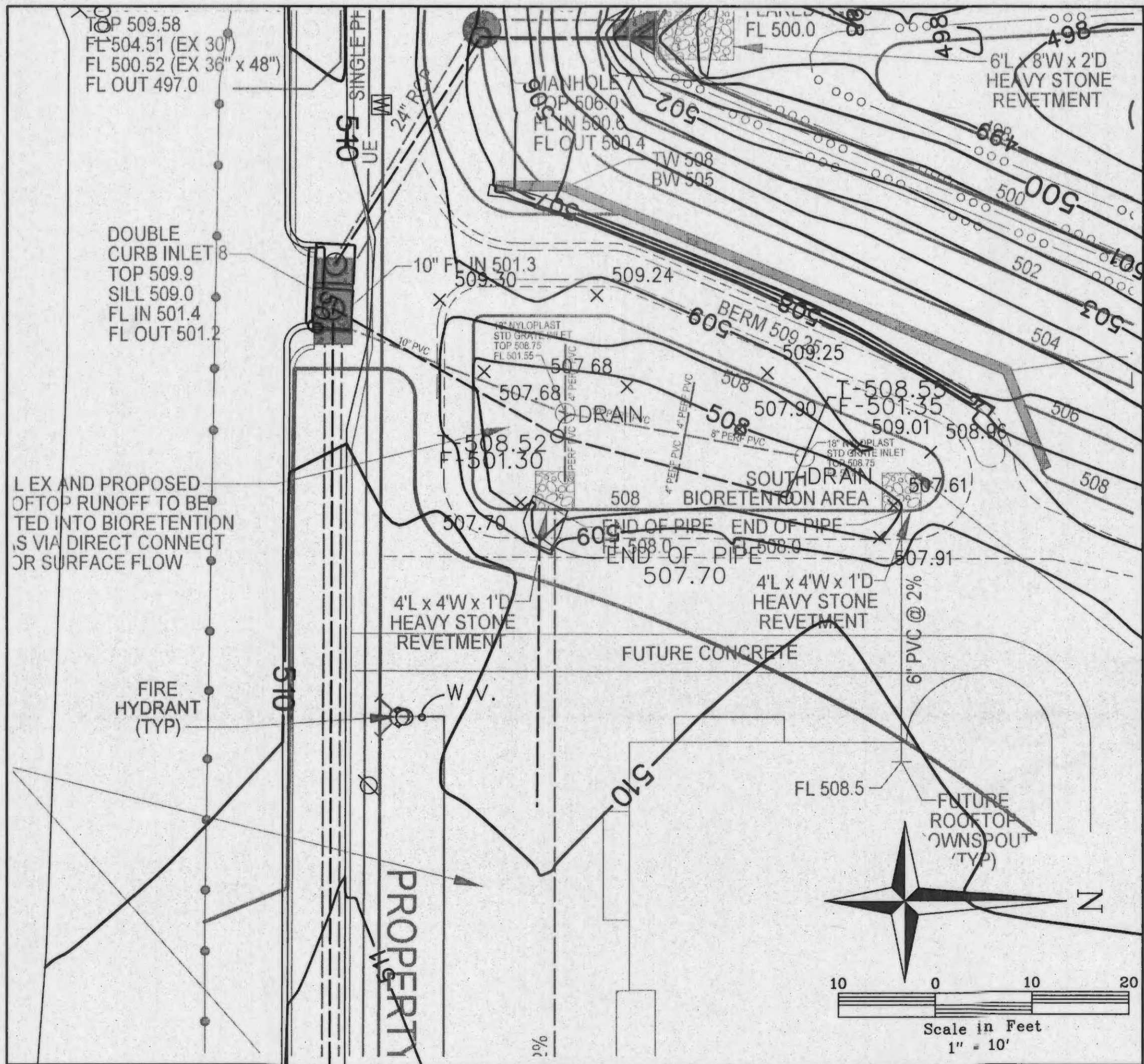
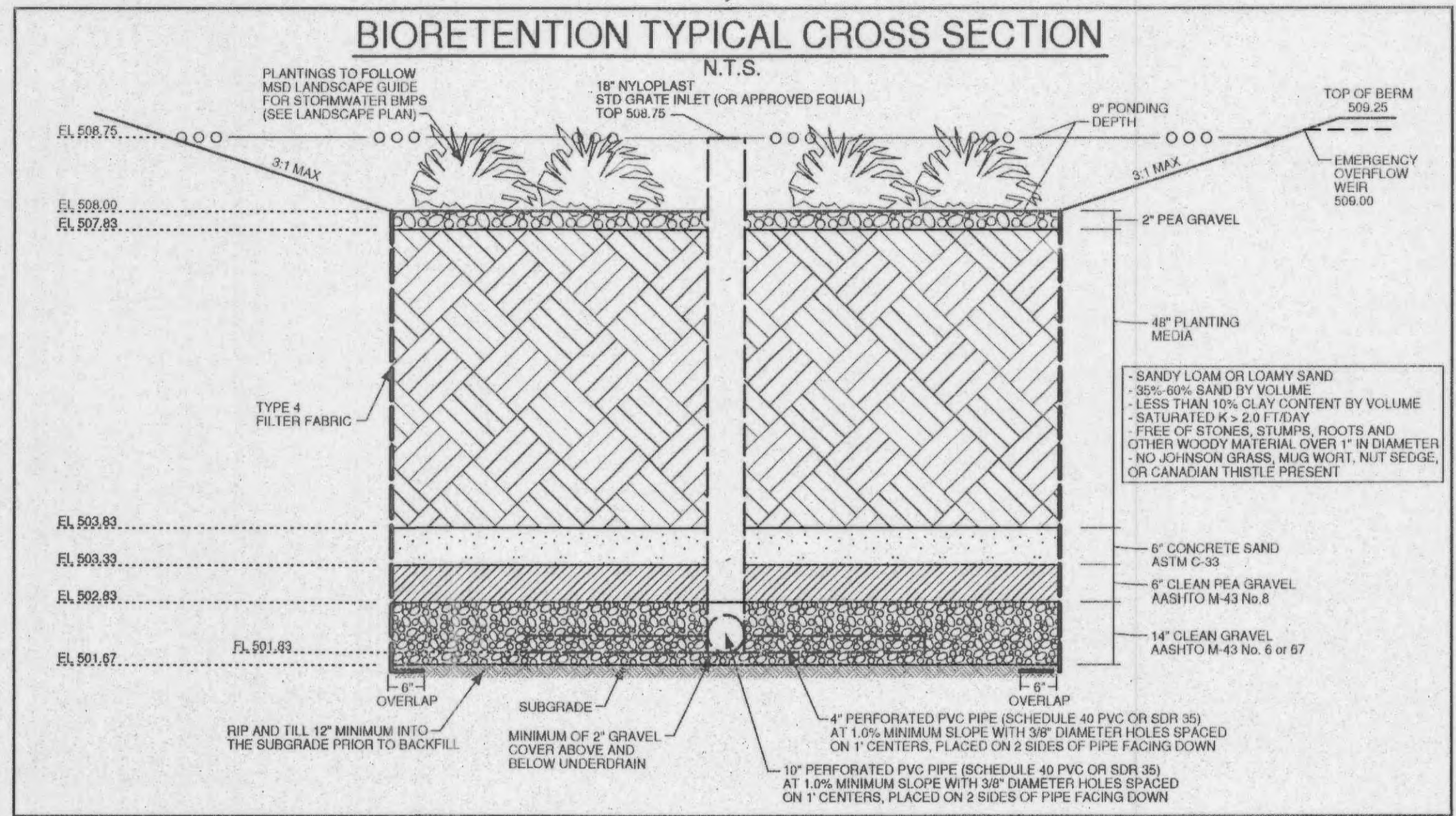
VOLZ Incorporated
 ENGINEERS
 LAND PLANNING
 LAND SURVEYING
 TRANSPORTATION
 CONST. MANAGEMENT
 10849 Indian Creek Rd., Suite 102
 St. Charles, MO 63301
 Phone 636-947-1132
 Fax 636-947-1132
 www.volzinc.com
 Authority #203



Eric J. Kirby
 Professional Land Surveyor
 PLS# 2005000074

**ASSUMPTION PARISH SCHOOL
 EXPANSION AND RENOVATION**
 BIORETENTION DETAILS - ASBUILTS

P&Z No. Approved
 City No.
 Page No.
C19



H:\cadd\10600-10699\10918\asbults\C19 BioretentionDetails 10918-0.dgn