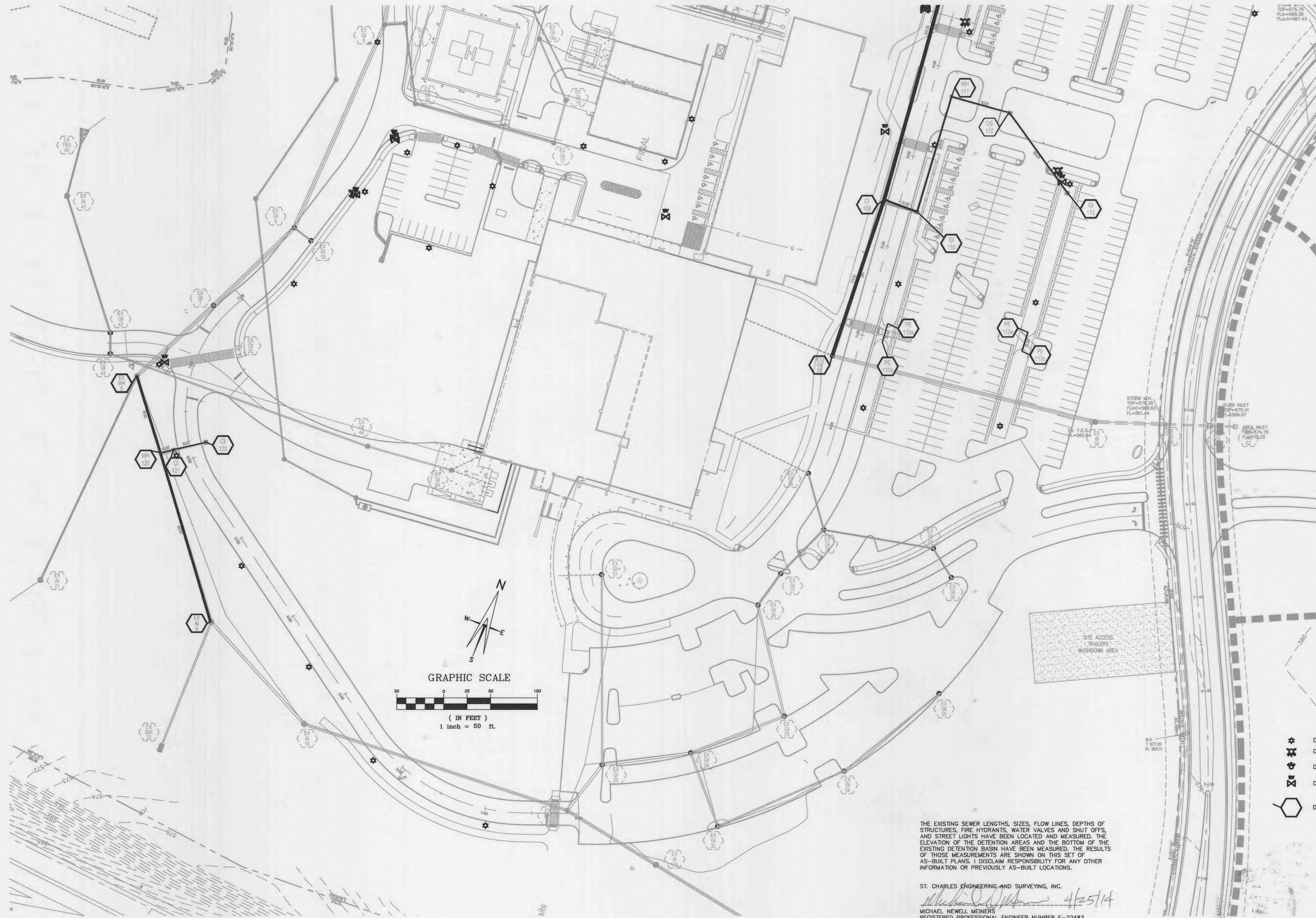


BJC PROGRESS WEST HEALTHCARE CAMPUS AS-BUILTS PLANS



THE EXISTING SEWER LENGTHS, SIZES, FLOW LINES, DEPTHS OF STRUCTURES, FIRE HYDRANTS, WATER VALVES AND SHUT OFFS, AND STREET LIGHTS HAVE BEEN LOCATED AND MEASURED. THE ELEVATION OF THE DETENTION AREAS AND THE BOTTOM OF THE EXISTING DETENTION BASIN HAVE BEEN MEASURED. THE RESULTS OF THOSE MEASUREMENTS ARE SHOWN ON THIS SET OF AS-BUILT PLANS. I DISCLAIM RESPONSIBILITY FOR ANY OTHER INFORMATION OR PREVIOUSLY AS-BUILT LOCATIONS.

ST. CHARLES ENGINEERING AND SURVEYING, INC.
Michael Newell 4/25/14
 MICHAEL NEWELL, MENERS
 REGISTERED PROFESSIONAL ENGINEER NUMBER E-22483

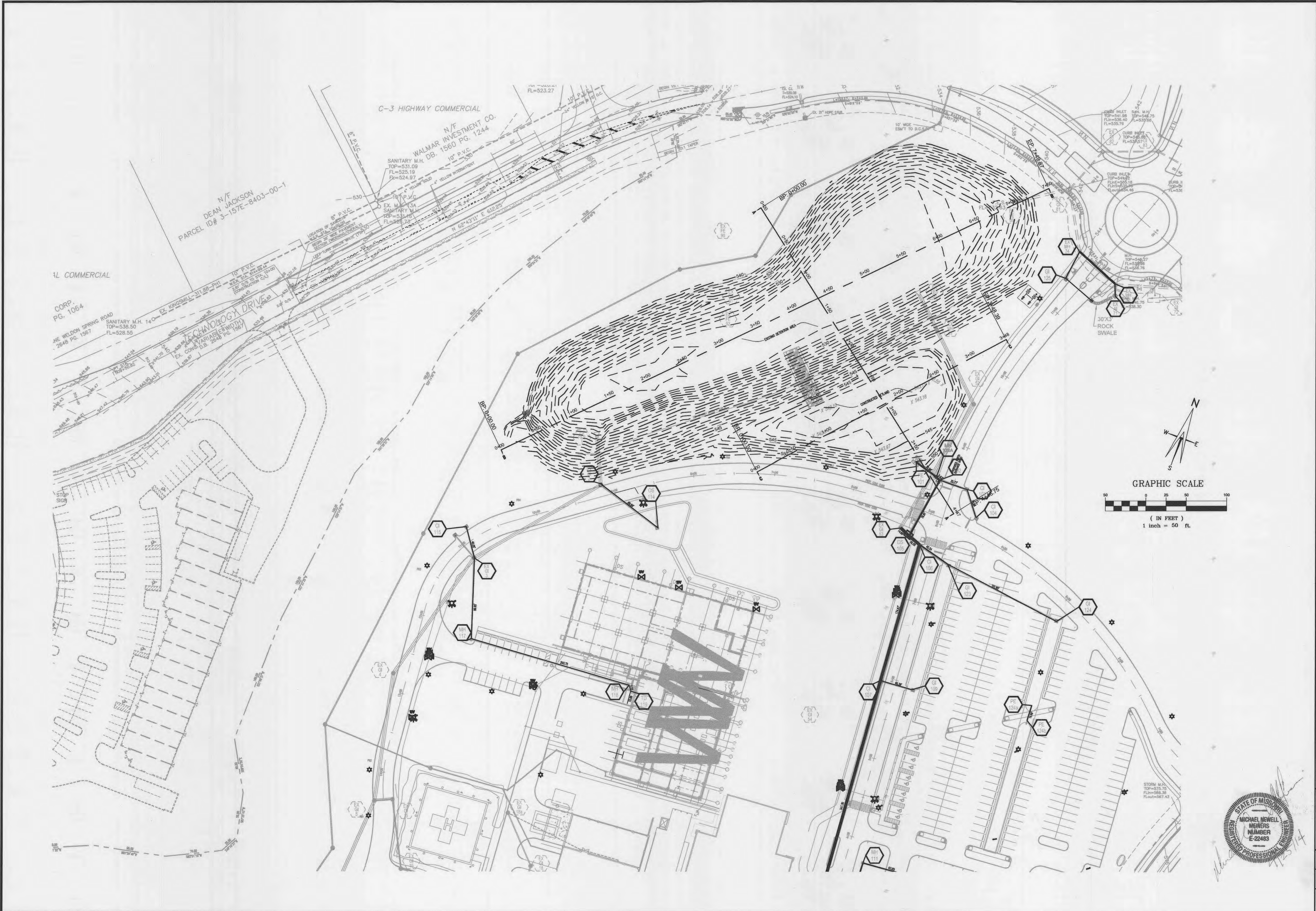
- DESIGNATES LIGHT STANDARD AS-BUILT LOCATION
- DESIGNATES FIRE HYDRANT AS BUILT LOCATION
- DESIGNATES WATER SHUT OFF AS BUILT LOCATION
- DESIGNATES WATER VALVE AS BUILT LOCATION
- DESIGNATES STORM SEWER STRUCTURES AS BUILT



A SET OF AS-BUILTS FOR
 A TRACT OF LAND BEING PART OF LOT 6 OF
 PROGRESS POINT VILLAGE
 PB. 40, PCS. 290-293, TOWNSHIP 46 NORTH, RANGE 3 EAST,
 ST. CHARLES COUNTY, MISSOURI

S | C | E | S
 ST. CHARLES ENGINEERING & SURVEYING, INC.
 801 S. FIFTH STREET, SUITE 202
 ST. CHARLES, MO 68801
 TEL: (636) 947-0607 FAX: (636) 947-2448

ORDER NO.
 09*0085
 DATE
 07/11/18
 1 OF 4

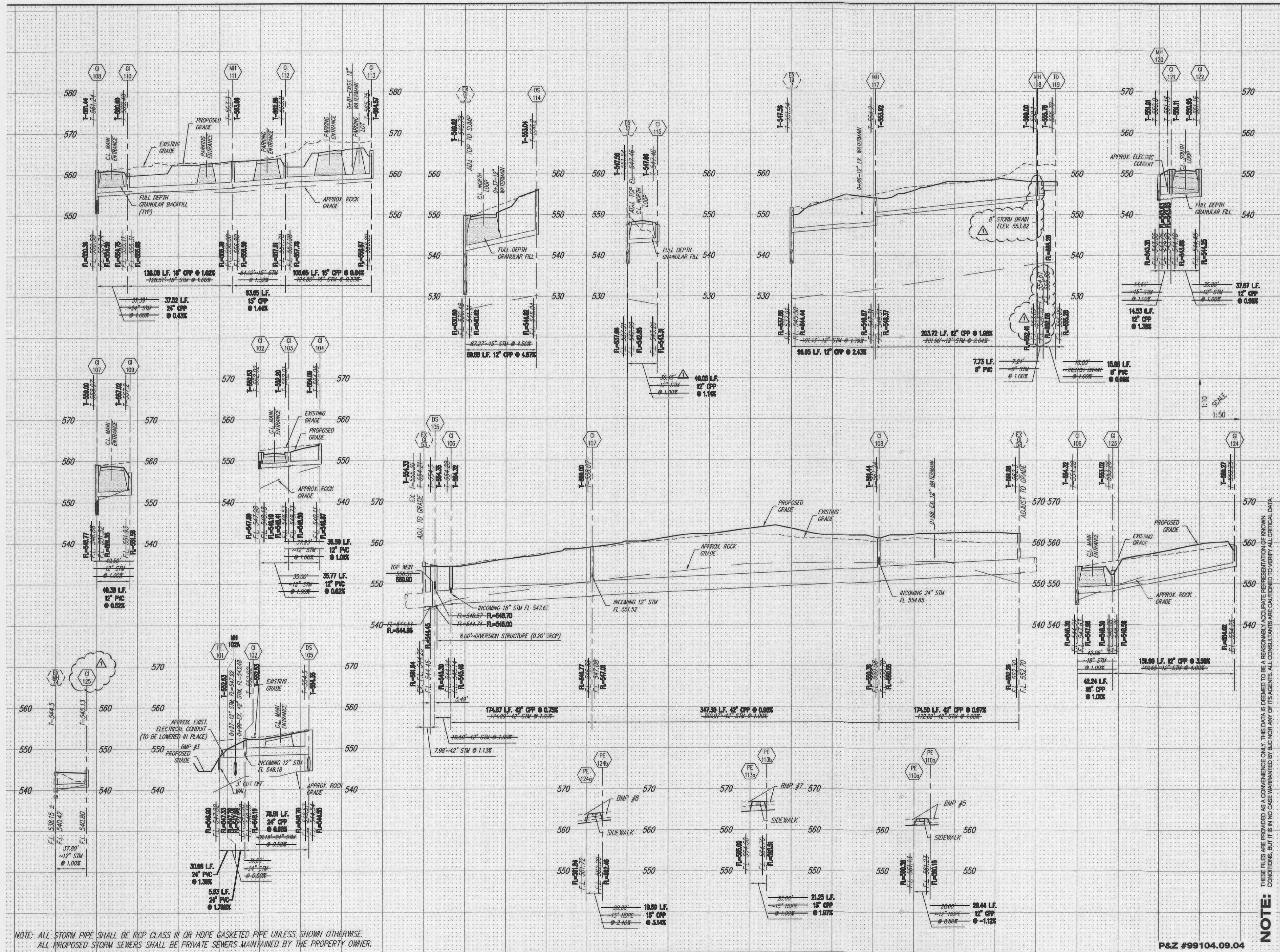


A SET OF AS-BUILTS FOR
 A TRACT OF LAND BEING PART OF LOT 6 OF
 PROGRESS POINT VILLAGE
 PB. 40, PGS. 290-293, TOWNSHIP 46 NORTH, RANGE 3 EAST,
 ST. CHARLES COUNTY, MISSOURI

S C ST. CHARLES ENGINEERING & SURVEYING, INC.
 801 S. FIFTH STREET, SUITE 202
 ST. CHARLES, MO 63801
 TEL: (636) 947-0607 FAX: (636) 947-2448

ORDER NO.
 09-0065
 DATE
 07/11/13
 2 OF 4





NOTE: ALL STORM PIPE SHALL BE RCP CLASS III OR HDPE GASKETED PIPE UNLESS SHOWN OTHERWISE.
 ALL PROPOSED STORM SEWERS SHALL BE PRIVATE SEWERS MAINTAINED BY THE PROPERTY OWNER.

NOTE: THESE FILES ARE PROVIDED AS A CONVENIENCE ONLY. THIS DATA IS DEEMED TO BE A REASONABLE ACCURATE REPRESENTATION OF KNOWN CONDITIONS, BUT IT IS IN NO CASE WARRANTED BY SAC NOR ANY OF ITS AGENTS. ALL CONSULTANTS ARE CAUTIONED TO VERIFY ALL CRITICAL DATA.

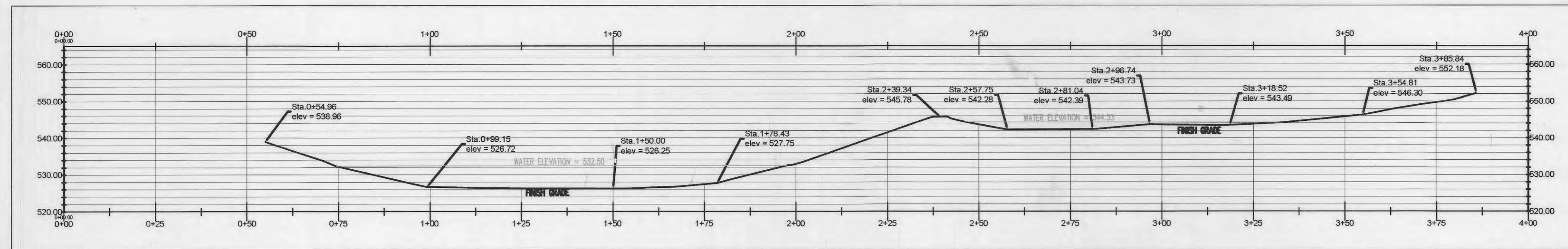
P&Z #99104.09.04



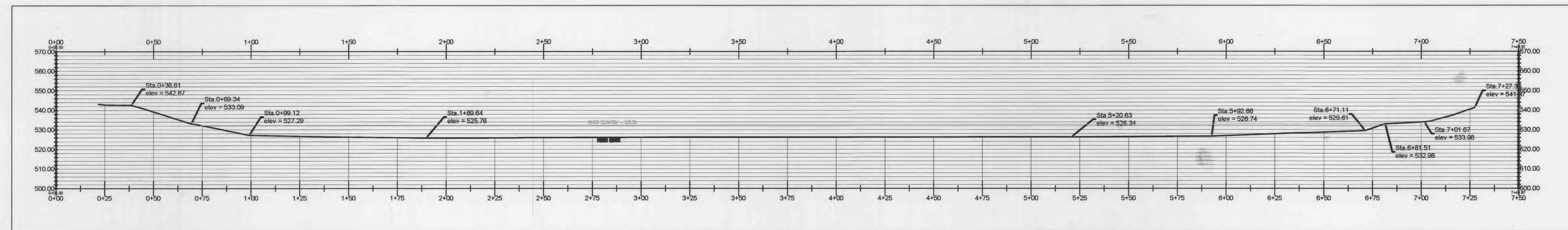
A SET OF AS-BUILTS FOR
 A TRACT OF LAND BEING PART OF LOT 6 OF
 PROGRESS POINT VILLAGE
 PB. 40, PGS. 290-293, TOWNSHIP 46 NORTH, RANGE 3 EAST,
 ST. CHARLES COUNTY, MISSOURI

SIC ST. CHARLES ENGINEERING & SURVEYING, INC.
 801 S. FIFTH STREET, SUITE 202
 ST. CHARLES, MO 63301
 TEL: (636) 947-0607 FAX: (636) 947-2448

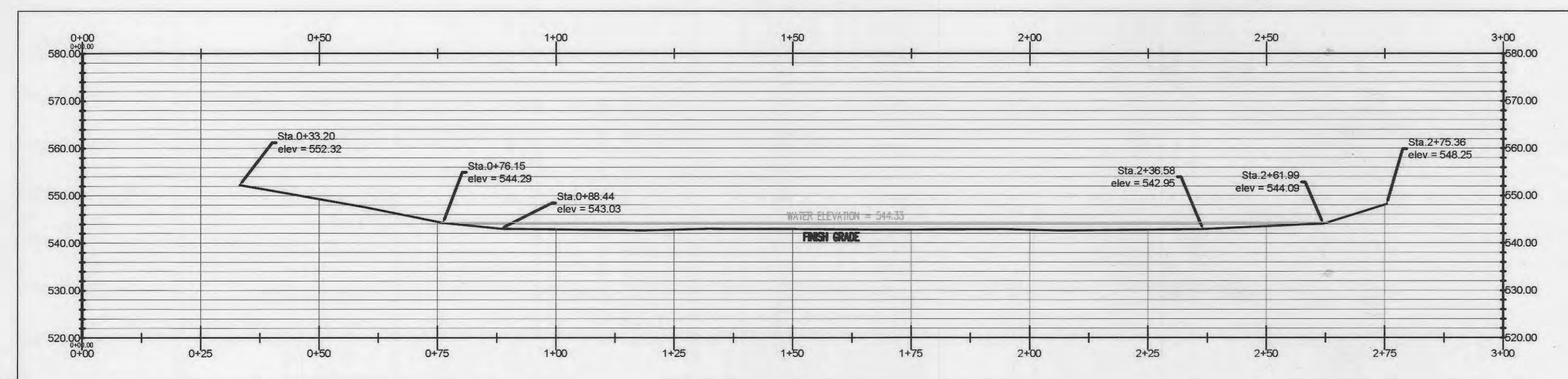
ORDER NO. 09*-0065
 DATE 07/11/13
 3 OF 4



SECTION A-A



SECTION B-B



SECTION C-C

A SET OF AS-BUILTS FOR
 A TRACT OF LAND BEING PART OF LOT 6 OF
 PROGRESS POINT VILLAGE
 PB. 40, PCS. 290-293, TOWNSHIP 46 NORTH, RANGE 3 EAST,
 ST. CHARLES COUNTY, MISSOURI

S | C | E | S
 ST. CHARLES ENGINEERING & SURVEYING, INC.
 801 S. FIFTH STREET, SUITE 202
 ST. CHARLES, MO 68301
 TEL: (636) 947-0607 FAX: (636) 947-2448

Michael Newell
 4/25/14



ORDER NO.
 09*-0065
 DATE
 07/11/18
 4 OF 4