

# CITY OF O'FALLON, MISSOURI

## BRYAN VALLEY

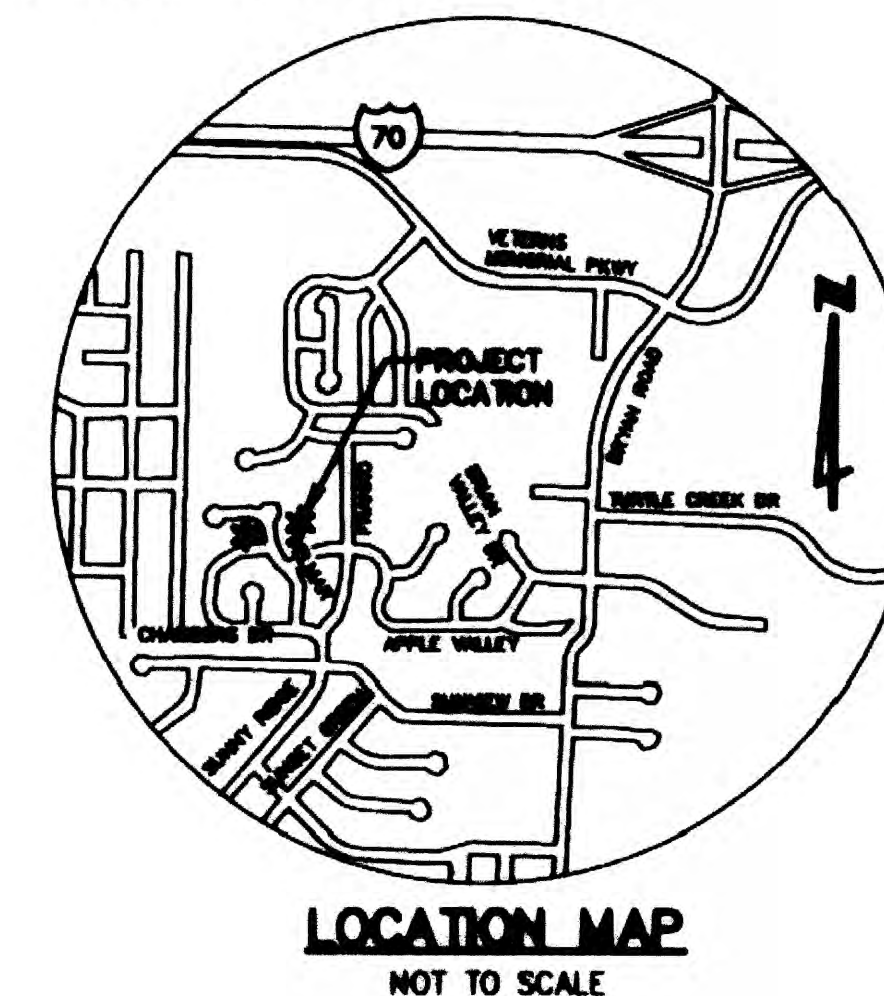
### STORM WATER IMPROVEMENTS

#### ST. CHARLES COUNTY

INDEX OF SHEETS	
SHEET NO.	DESCRIPTION
1	COVER SHEET
2	GENERAL NOTES
3-4	PLAN SHEET
5	PROFILE SHEET
6-7	DETAILS
8	DRAINAGE AREA MAP

## AS-BUILTS

These "AS-BUILT" STORM SEWER plans are based on actual field observations conducted during August 2013 and the results are shown hereon.

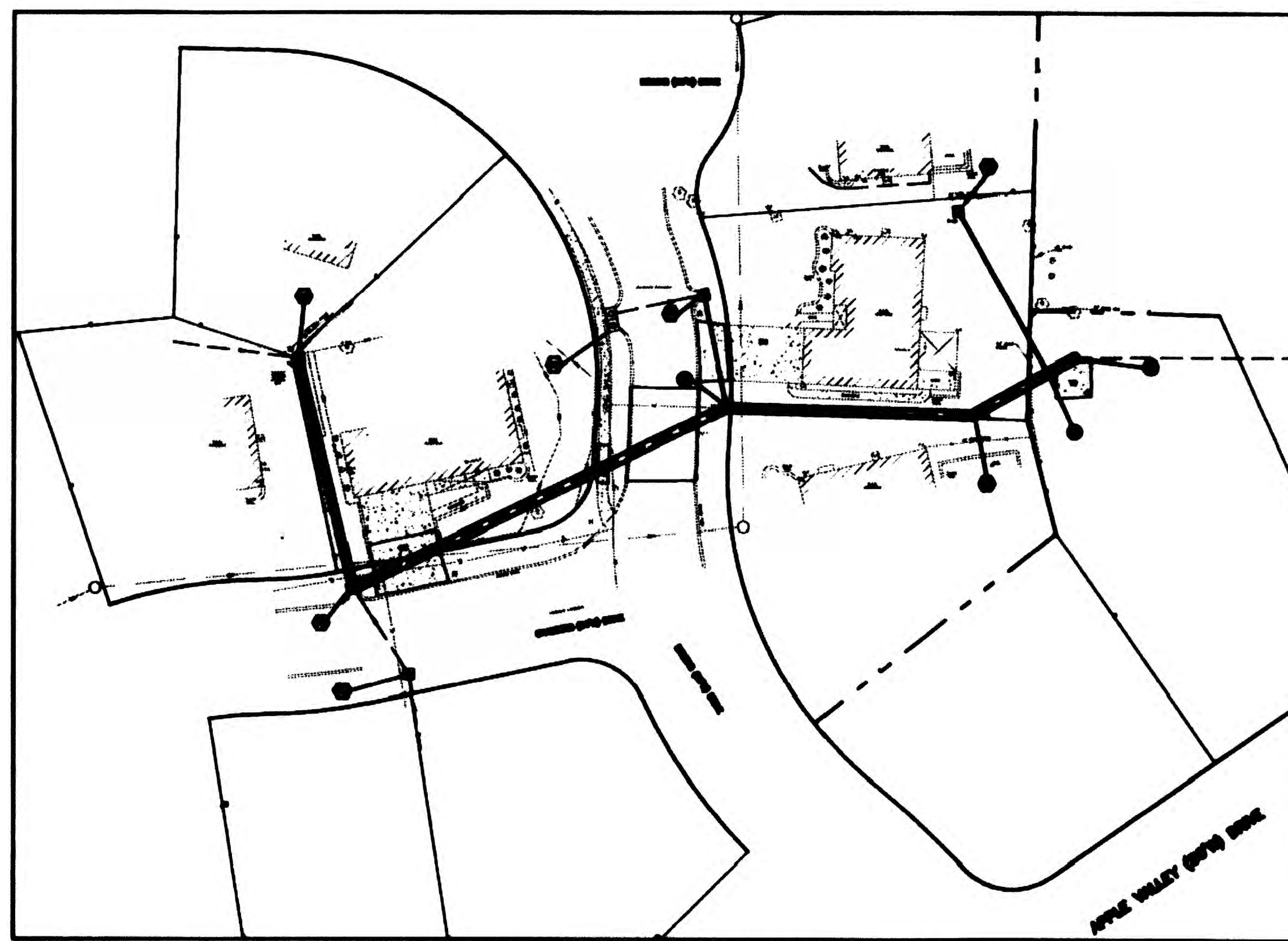


By:   
 STANLEY M. MUNDWILER, P.L.S., #2005019226  
 STATE OF MISSOURI  
 PICKETT, RAY & SILVER'S CORPORATE  
 REGISTRATION NO. LS-54-D  
 PRS PROJECT NO. 11004.NMEH.00S  
 FB 1414

THE PROFESSIONAL WHOSE SIGNATURE AND PERSONAL SEAL APPEAR HEREON, ASSUMES RESPONSIBILITY ONLY FOR WHAT APPEARS ON THIS PAGE, AND DISCLAIMS ANY RESPONSIBILITY FOR ALL OTHER PLANS, SPECIFICATIONS, ESTIMATES, REPORTS, OR OTHER DOCUMENTS OR INSTRUMENTS NOT SEALED BY THE UNDERSIGNED PROFESSIONAL RELATING TO OR INTENDED TO BE USED FOR ANY PART OR PARTS OF THE PROJECT TO WHICH THIS PAGE REFERS.

REV.	DATE	DESCRIPTION	BY
<b>CITY OF O'FALLON, MISSOURI</b> 100 NORTH MAIN STREET O'FALLON, MISSOURI 63366			
<b>BRYAN VALLEY</b> <b>STORM WATER IMPROVEMENTS</b>			
Designed	C.M.B.	 EDM Incorporated 220 Monahan House, 3rd Floor St. Louis, Missouri 63102 (314) 231-5485 Fax: (314) 231-8167 Certificate of Authority #00181445	Project No. 10185.00
Drawn	C.M.B.		Sheet No.
Checked	S.M.S.		1
Date	9-28-12		

EXISTING	LEGEND	NEW
○	MANHOLE	●
⊙	MANHOLE (w/GRATED LID)	⊙
⊠	INLET MANHOLE	⊠
□	INLET	■
▢	DOUBLE INLET	■
⌒	MULTIPLE INLET	⌒
○	MANHOLE DESIGNATOR	○
⊠	INLET OR STRUCTURE DESIGNATOR	⊠
—	PIPE 6" THRU 18"	—
==	PIPE 21" THRU 108"	==
— — —	FENCE	— — —
— — —	UNDERGROUND UTILITIES	— — —
— — —	FLOWLINE OF CREEK OR DITCH	— — —
— — —	GUARD RAIL	— — —
⊕	TREE	⊕
⊕	BUSH	⊕
— — —	HEDGE ROW	— — —
○ WM	UTILITY METER OR VALVE	○ WM
□ TELE	UTILITY BOX	□ TELE
● FP	POWER POLE	● FP
● FP	POWER POLE & GUY	● FP
—	STREET SIGN	—
●	FIRE HYDRANT	●
⊕	LIGHT STANDARD	⊕
⊕	MAIL BOX	⊕
⊕	HOUSE VENT	⊕
△	CONTROL POINT	△
◇	CONTROL POINT DESIGNATOR	◇
⊕	TEST HOLE	⊕
(TBR)	TO BE REMOVED	(TBR)
(TBR&R)	TO BE REMOVED AND REPLACED	(TBR&R)
(UP)	USE IN PLACE	(UP)
TCE	TEMPORARY CONSTRUCTION EASEMENT	TCE



UTILITY CONTACTS			
<b>SANITARY SEWER</b> CITY OF O'FALLON 100 N. MAIN ST. O'FALLON, MO. 63366 636-281-2858	<b>COTTLEVILLE FIRE PROTECTION DISTRICT</b> 1385 MOTHERHEAD RD. ST. CHARLES, MO. 63304 636-447-6655	<b>FIRE DEPARTMENT</b> O'FALLON FIRE PROTECTION DISTRICT 119 E. ELM ST. O'FALLON, MO. 63366 636-272-3493	<b>TELEPHONE</b> CENTURY TEL. 1151 CENTURY TEL DR. WENTZVILLE, MO. 63385 636-332-7261
<b>CABLE</b> CHARTER COMMUNICATIONS 941 CHARTER COMMONS DRIVE TOWN & COUNTRY, MO 63107 636-387-6633	<b>WENTZVILLE FIRE DISTRICT</b> 209 WEST PEARCE BLVD. WENTZVILLE, MO. 63385	<b>AMEREN UE</b> 200 CALLAHAN ROAD WENTZVILLE, MO. 63385 636-639-8312	<b>GAS</b> LACLEDE GAS COMPANY 6400 GRAHAM ROAD ST. LOUIS, MO. 63134 314-522-2297
<b>WATER</b> CITY OF O'FALLON 100 N. MAIN ST. O'FALLON, MO. 63366 636-281-2858	<b>STORM SEWER</b> CITY OF O'FALLON 100 N. MAIN ST. O'FALLON, MO. 63366 636-281-2858	<b>WATER</b> CITY OF O'FALLON 100 N. MAIN ST. O'FALLON, MO. 63366 636-281-2858	<b>GAS</b> LACLEDE GAS COMPANY 6400 GRAHAM ROAD ST. LOUIS, MO. 63134 314-522-2297

**NOTES:**

- UNDERGROUND FACILITIES, STRUCTURES AND UTILITIES HAVE BEEN PLOTTED FROM AVAILABLE SURVEYS AND RECORDS. THEREFORE, THEIR LOCATIONS MUST BE CONSIDERED APPROXIMATE ONLY. THERE MAY BE OTHERS, THE EXISTENCE OF WHICH IS NOT PRESENTLY KNOWN. IT IS THE RESPONSIBILITY OF THE CONTRACTOR TO HAVE ALL UTILITIES LOCATED IN THE FIELD PRIOR TO EXCAVATION OR CONSTRUCTION.
- THERE WERE NO OBSTRUCTIONS OBSERVED IN THE SEWER PIPE LINES AT THE TIME OF THE AS BUILT LOCATIONS.

BASIS OF BEARINGS IS GRID NORTH DETERMINED BY GPS OBSERVATIONS.

THE PROJECT COORDINATE VALUES ARE MODIFIED TO GROUND FROM STATE PLANE COORDINATE VALUES WITH THE APPLIED AVERAGE COMBINED SCALE FACTOR (CSF) OF .99991405535.

TO ACHIEVE STATE PLANE COORDINATE VALUES FROM PROJECT COORDINATE VALUES, ADD 1,000,000 TO NORTH VALUES AND 700,000 TO EAST VALUES. THEN APPLY THE COMBINED SCALE FACTOR.

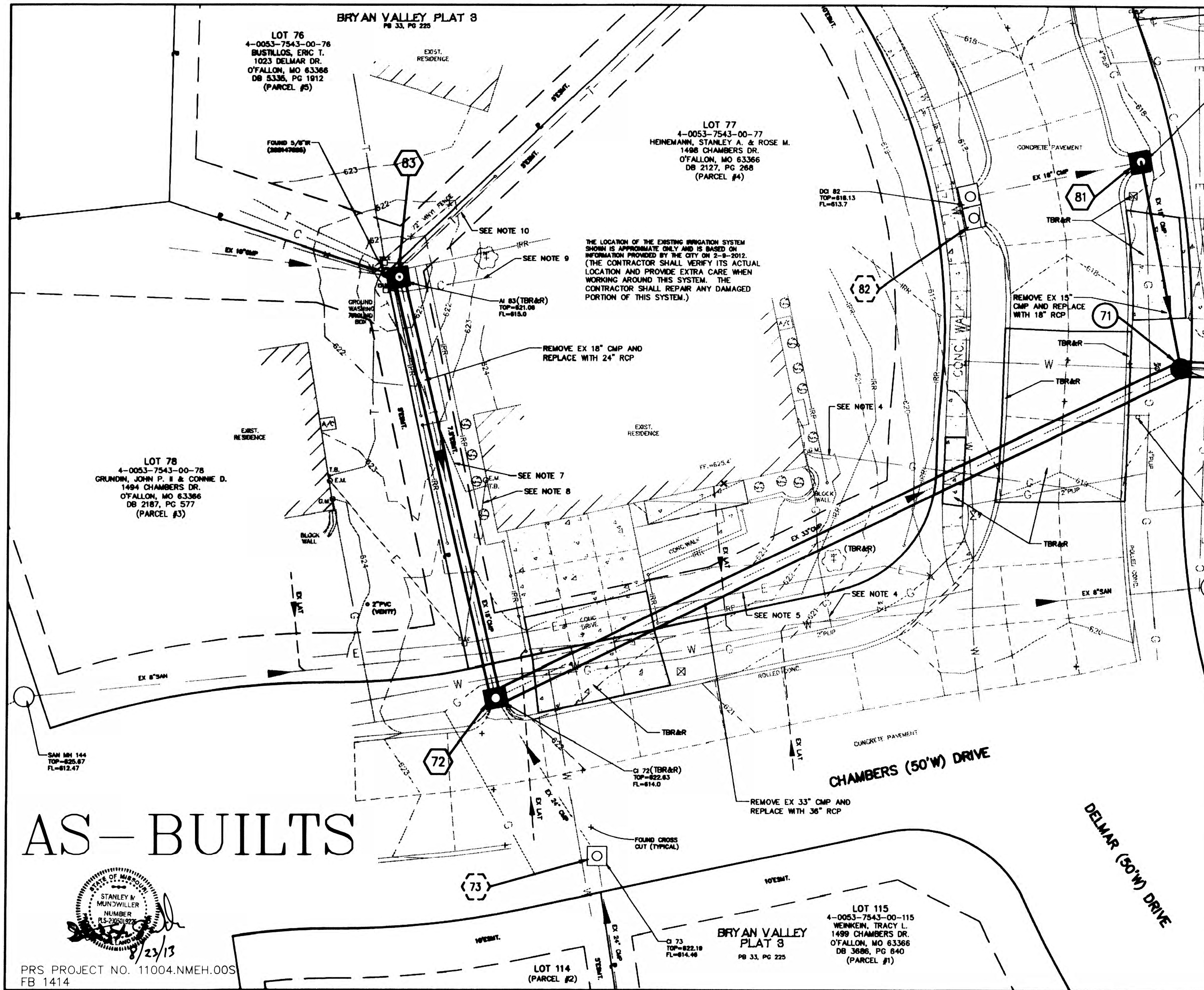
(MODIFIED COORDINATE VALUES X CSF = STATE PLANE COORDINATE VALUES.)

THE PROJECT ELEVATIONS ARE NGVD 1929 RAISED 0.07' FROM NAVD 1988 AS DETERMINED BY GPS OBSERVATIONS USING GEOD03 SEPARATIONS.

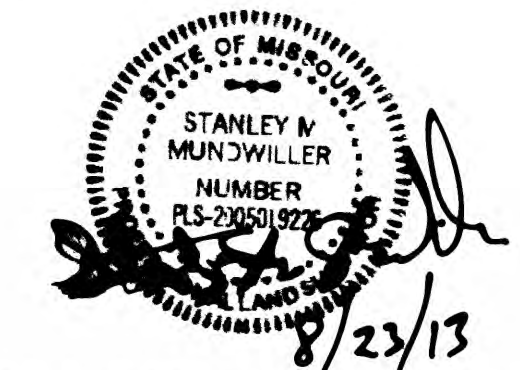
MISSOURI GEOGRAPHIC REFERENCE STATION: ORF.

NORTH=328473.903 m  
 EAST=228692.289 m  
 ELEV.=203.5 m

11004-BRYAN VALLEY AS BUILTS



AS-BUILTS



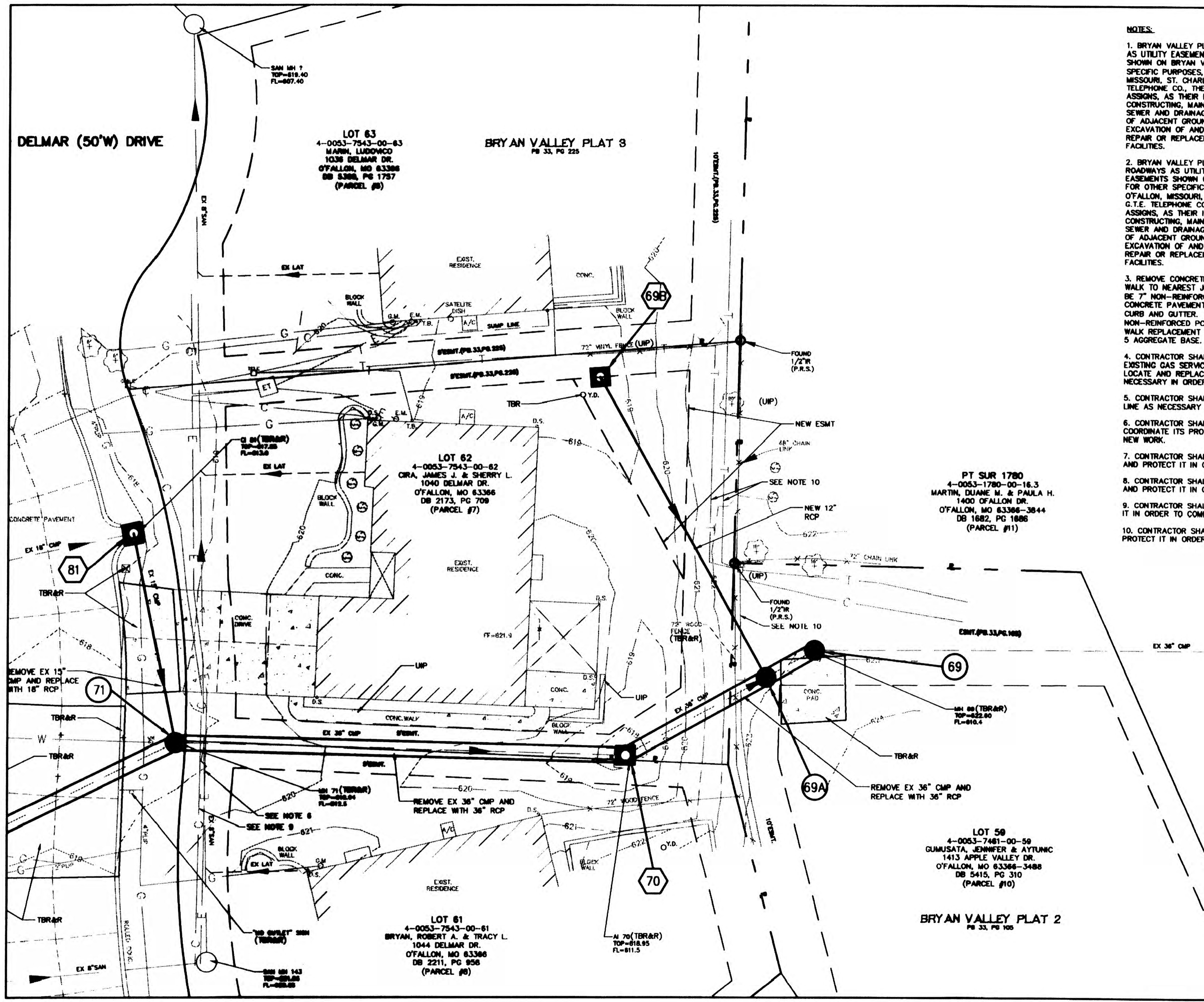
PRS PROJECT NO. 11004.NMEH.00S  
FB 1414

**NOTES:**

1. BRYAN VALLEY PLAT TWO DESIGNATES THE STREETS AND ROADWAYS AS UTILITY EASEMENTS. ALL STREETS, ROADWAYS, AND EASEMENTS SHOWN ON BRYAN VALLEY PLAT TWO, UNLESS DESIGNATED FOR OTHER SPECIFIC PURPOSES, ARE GRANTED TO THE CITY OF O'FALLON, MISSOURI, ST. CHARLES GAS COMPANY, UNION ELECTRIC CO., G.T.E. TELEPHONE CO., THE CABLE COMPANY, THEIR SUCCESSORS AND ASSIGNS, AS THEIR INTEREST MAY APPEAR FOR THE PURPOSES OF CONSTRUCTING, MAINTAINING AND REPAIRING OF PUBLIC UTILITIES AND SEWER AND DRAINAGE FACILITIES WITH THE RIGHT OF TEMPORARY USE OF ADJACENT GROUND NOT OCCUPIED BY IMPROVEMENTS FOR THE EXCAVATION OF AND STORAGE OF MATERIALS DURING INSTALLATION, REPAIR OR REPLACEMENT OF SAID UTILITIES, SEWERS, AND DRAINAGE FACILITIES.
2. BRYAN VALLEY PLAT THREE DESIGNATES THE STREETS AND ROADWAYS AS UTILITY EASEMENTS. ALL STREETS, ROADWAYS, AND EASEMENTS SHOWN ON BRYAN VALLEY PLAT TWO, UNLESS DESIGNATED FOR OTHER SPECIFIC PURPOSES, ARE GRANTED TO THE CITY OF O'FALLON, MISSOURI, ST. CHARLES GAS COMPANY, UNION ELECTRIC CO., G.T.E. TELEPHONE CO., THE CABLE COMPANY, THEIR SUCCESSORS AND ASSIGNS, AS THEIR INTEREST MAY APPEAR FOR THE PURPOSES OF CONSTRUCTING, MAINTAINING AND REPAIRING OF PUBLIC UTILITIES AND SEWER AND DRAINAGE FACILITIES WITH THE RIGHT OF TEMPORARY USE OF ADJACENT GROUND NOT OCCUPIED BY IMPROVEMENTS FOR THE EXCAVATION OF AND STORAGE OF MATERIALS DURING INSTALLATION, REPAIR OR REPLACEMENT OF SAID UTILITIES, SEWERS, AND DRAINAGE FACILITIES.
3. REMOVE CONCRETE PAVEMENT, CONCRETE DRIVEWAY, AND CONCRETE WALK TO NEAREST JOINT. CONCRETE PAVEMENT REPLACEMENT SHALL BE 7" NON-REINFORCED PCC OVER 4" TYPE 5 AGGREGATE BASE. CONCRETE DRIVEWAY REPLACEMENT SHALL INCLUDE THE CONCRETE CURB AND GUTTER. CONCRETE DRIVEWAY REPLACEMENT SHALL BE 6" NON-REINFORCED PCC OVER 4" TYPE 5 AGGREGATE BASE. CONCRETE WALK REPLACEMENT SHALL BE 4" NON-REINFORCED PCC OVER 4" TYPE 5 AGGREGATE BASE.
4. CONTRACTOR SHALL VERIFY WHICH OF THESE LINES IS THE ACTUAL EXISTING GAS SERVICE TO 1498 CHAMBERS DRIVE. CONTRACTOR SHALL LOCATE AND REPLACE THE ACTUAL EXISTING GAS SERVICE LINE AS NECESSARY IN ORDER TO COMPLETE THE NEW WORK.
5. CONTRACTOR SHALL LOCATE AND REPLACE THE EXISTING ELECTRIC LINE AS NECESSARY IN ORDER TO COMPLETE THE NEW WORK.
6. CONTRACTOR SHALL LOCATE THE EXISTING ELECTRIC LINE AND COORDINATE ITS PROTECTION WITH AMEREN IN ORDER TO COMPLETE THE NEW WORK.
7. CONTRACTOR SHALL LOCATE THE EXISTING TELEPHONE SERVICE LINE AND PROTECT IT IN ORDER TO COMPLETE THE NEW WORK.
8. CONTRACTOR SHALL LOCATE THE EXISTING ELECTRIC SERVICE LINE AND PROTECT IT IN ORDER TO COMPLETE THE NEW WORK.
9. CONTRACTOR SHALL LOCATE THE EXISTING CABLE LINE AND PROTECT IT IN ORDER TO COMPLETE THE NEW WORK.
10. CONTRACTOR SHALL LOCATE THE EXISTING TELEPHONE LINE AND PROTECT IT IN ORDER TO COMPLETE THE NEW WORK.

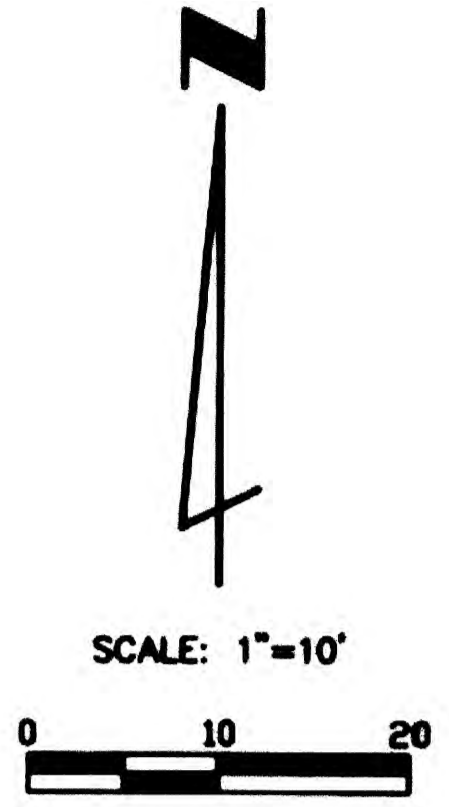
THE PROFESSIONAL WHOSE SIGNATURE AND PERSONAL SEAL APPEAR HEREON, ASSUMES RESPONSIBILITY ONLY FOR WHAT APPEARS ON THIS PAGE, AND DISCLAIMS ANY RESPONSIBILITY FOR ALL OTHER PLANS, SPECIFICATIONS, ESTIMATES, REPORTS, OR OTHER DOCUMENTS OR INSTRUMENTS NOT SEALED BY THE UNDERSIGNED PROFESSIONAL RELATING TO OR INTENDED TO BE USED FOR ANY PART OR PARTS OF THE PROJECT TO WHICH THIS PAGE REFERS.

Engineer Seal			
		REV. DATE	DESCRIPTION
		<b>CITY OF O'FALLON, MISSOURI</b> <b>100 NORTH MAIN STREET</b> <b>O'FALLON, MISSOURI 63366</b>	
		<b>BRYAN VALLEY</b> <b>STORM WATER IMPROVEMENTS</b>	
CHRISTOPHER M. BETTS, P.E. CIVIL ENGINEER MISSOURI NO. E-2887149988 EXPIRES: 12-31-12		EDM Incorporated 220 Mansion House, 3rd Floor St. Louis, Missouri 63102 (314) 231-5485 Fax: (314) 231-8167 Certificate of Authority #00181445	
Designed	C.M.B.	Project No.	10185.00
Drawn	C.M.B.	Sheet No.	3
Checked	S.M.S.		
Date	9-28-12		



**NOTES:**

1. BRYAN VALLEY PLAT TWO DESIGNATES THE STREETS AND ROADWAYS AS UTILITY EASEMENTS. ALL STREETS, ROADWAYS, AND EASEMENTS SHOWN ON BRYAN VALLEY PLAT TWO, UNLESS DESIGNATED FOR OTHER SPECIFIC PURPOSES, ARE GRANTED TO THE CITY OF OFALLON, MISSOURI, ST. CHARLES GAS COMPANY, UNION ELECTRIC CO., G.T.E. TELEPHONE CO., THE CABLE COMPANY, THEIR SUCCESSORS AND ASSIGNS, AS THEIR INTEREST MAY APPEAR FOR THE PURPOSES OF CONSTRUCTING, MAINTAINING AND REPAIRING OF PUBLIC UTILITIES AND SEWER AND DRAINAGE FACILITIES WITH THE RIGHT OF TEMPORARY USE OF ADJACENT GROUND NOT OCCUPIED BY IMPROVEMENTS FOR THE EXCAVATION OF AND STORAGE OF MATERIALS DURING INSTALLATION, REPAIR OR REPLACEMENT OF SAID UTILITIES, SEWERS, AND DRAINAGE FACILITIES.
2. BRYAN VALLEY PLAT THREE DESIGNATES THE STREETS AND ROADWAYS AS UTILITY EASEMENTS. ALL STREETS, ROADWAYS, AND EASEMENTS SHOWN ON BRYAN VALLEY PLAT TWO, UNLESS DESIGNATED FOR OTHER SPECIFIC PURPOSES, ARE GRANTED TO THE CITY OF OFALLON, MISSOURI, ST. CHARLES GAS COMPANY, UNION ELECTRIC CO., G.T.E. TELEPHONE CO., THE CABLE COMPANY, THEIR SUCCESSORS AND ASSIGNS, AS THEIR INTEREST MAY APPEAR FOR THE PURPOSES OF CONSTRUCTING, MAINTAINING AND REPAIRING OF PUBLIC UTILITIES AND SEWER AND DRAINAGE FACILITIES WITH THE RIGHT OF TEMPORARY USE OF ADJACENT GROUND NOT OCCUPIED BY IMPROVEMENTS FOR THE EXCAVATION OF AND STORAGE OF MATERIALS DURING INSTALLATION, REPAIR OR REPLACEMENT OF SAID UTILITIES, SEWERS, AND DRAINAGE FACILITIES.
3. REMOVE CONCRETE PAVEMENT, CONCRETE DRIVEWAY, AND CONCRETE WALK TO NEAREST JOINT. CONCRETE PAVEMENT REPLACEMENT SHALL BE 7" NON-REINFORCED PCC OVER 4" TYPE 5 AGGREGATE BASE. CONCRETE DRIVEWAY REPLACEMENT SHALL INCLUDE THE CONCRETE CURB AND GUTTER. CONCRETE DRIVEWAY REPLACEMENT SHALL BE 6" NON-REINFORCED PCC OVER 4" TYPE 5 AGGREGATE BASE. CONCRETE WALK REPLACEMENT SHALL BE 4" NON-REINFORCED PCC OVER 4" TYPE 5 AGGREGATE BASE.
4. CONTRACTOR SHALL VERIFY WHICH OF THESE LINES IS THE ACTUAL EXISTING GAS SERVICE TO 1400 CHAMBERS DRIVE. CONTRACTOR SHALL LOCATE AND REPLACE THE ACTUAL EXISTING GAS SERVICE LINE AS NECESSARY IN ORDER TO COMPLETE THE NEW WORK.
5. CONTRACTOR SHALL LOCATE AND REPLACE THE EXISTING ELECTRIC LINE AS NECESSARY IN ORDER TO COMPLETE THE NEW WORK.
6. CONTRACTOR SHALL LOCATE THE EXISTING ELECTRIC LINE AND COORDINATE ITS PROTECTION WITH AMEREN IN ORDER TO COMPLETE THE NEW WORK.
7. CONTRACTOR SHALL LOCATE THE EXISTING TELEPHONE SERVICE LINE AND PROTECT IT IN ORDER TO COMPLETE THE NEW WORK.
8. CONTRACTOR SHALL LOCATE THE EXISTING ELECTRIC SERVICE LINE AND PROTECT IT IN ORDER TO COMPLETE THE NEW WORK.
9. CONTRACTOR SHALL LOCATE THE EXISTING CABLE LINE AND PROTECT IT IN ORDER TO COMPLETE THE NEW WORK.
10. CONTRACTOR SHALL LOCATE THE EXISTING TELEPHONE LINE AND PROTECT IT IN ORDER TO COMPLETE THE NEW WORK.



# AS-BUILTS

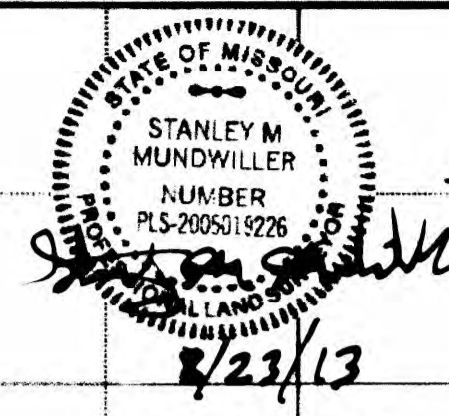
PRS PROJECT NO. 11004.NMEH.005  
FB 1414

THE PROFESSIONAL WHOSE SIGNATURE AND PERSONAL SEAL APPEAR HEREON, ASSUMES RESPONSIBILITY ONLY FOR WHAT APPEARS ON THIS PAGE, AND DISCLAIMS ANY RESPONSIBILITY FOR ALL OTHER PLANS, SPECIFICATIONS, ESTIMATES, REPORTS, OR OTHER DOCUMENTS OR INSTRUMENTS NOT SEALED BY THE UNDERSIGNED PROFESSIONAL RELATING TO OR INTENDED TO BE USED FOR ANY PART OR PARTS OF THE PROJECT TO WHICH THIS PAGE REFERS.

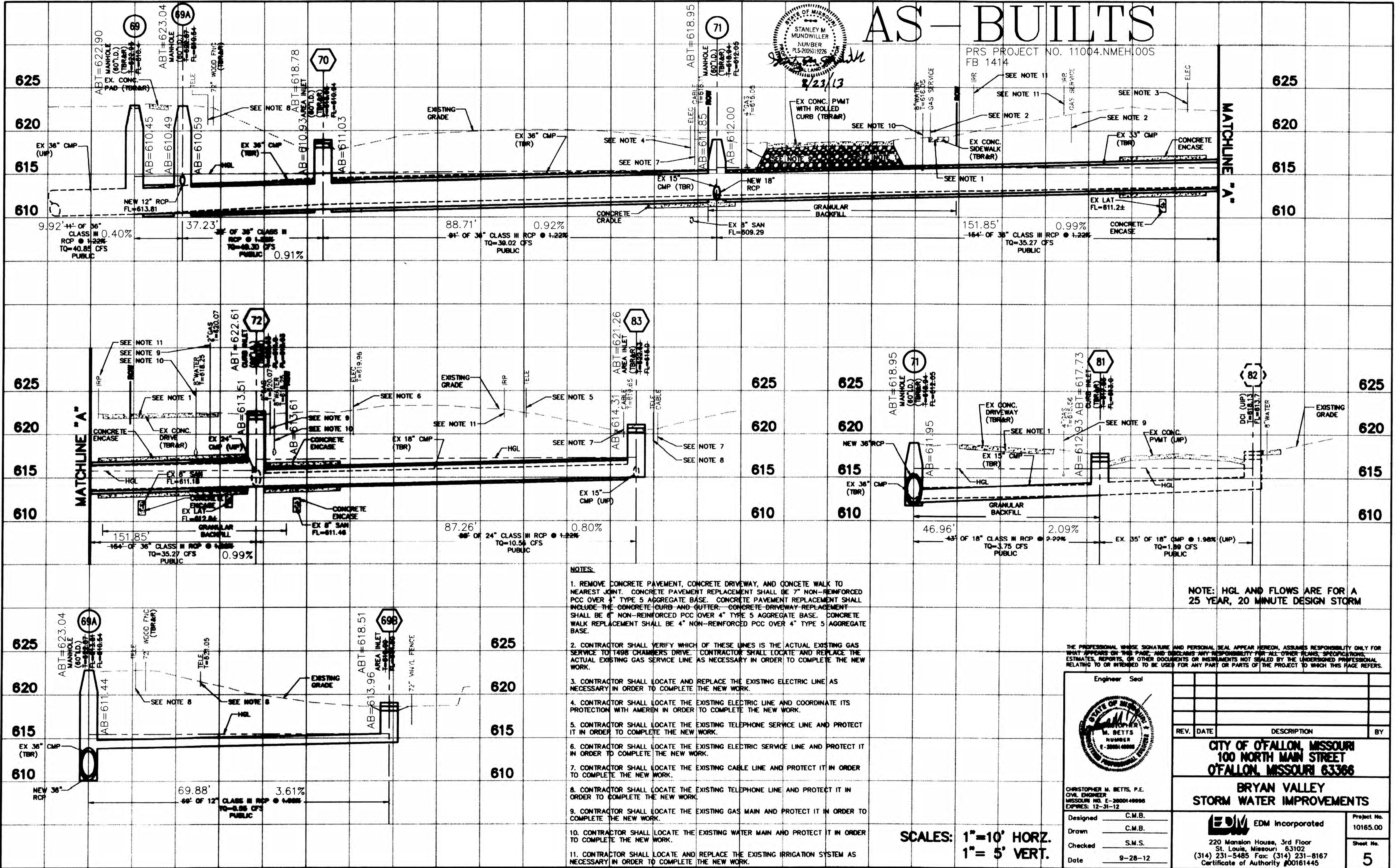
Engineer Seal	
Designed	C.M.B.
Drawn	C.M.B.
Checked	S.M.S.
Date	9-28-12

REV.	DATE	DESCRIPTION	BY
<b>CITY OF OFALLON, MISSOURI</b> 100 NORTH MAIN STREET OFALLON, MISSOURI 63366			
<b>BRYAN VALLEY</b> <b>STORM WATER IMPROVEMENTS</b>			
EDM Incorporated 220 Manalou House, 3rd Floor St. Louis, Missouri 63102 (314) 231-5485 Fax: (314) 231-8167 Certificate of Authority #00181445			Project No. 10165.00  Sheet No. <b>4</b>

# AS-BUILTS



PRS PROJECT NO. 11004.NMEH.00S  
FB 1414



- NOTES:
1. REMOVE CONCRETE PAVEMENT, CONCRETE DRIVEWAY, AND CONCRETE WALK TO NEAREST JOINT. CONCRETE PAVEMENT REPLACEMENT SHALL BE 7" NON-REINFORCED PCC OVER 4" TYPE 5 AGGREGATE BASE. CONCRETE PAVEMENT REPLACEMENT SHALL INCLUDE THE CONCRETE CURB AND GUTTER. CONCRETE DRIVEWAY REPLACEMENT SHALL BE 6" NON-REINFORCED PCC OVER 4" TYPE 5 AGGREGATE BASE. CONCRETE WALK REPLACEMENT SHALL BE 4" NON-REINFORCED PCC OVER 4" TYPE 5 AGGREGATE BASE.
  2. CONTRACTOR SHALL VERIFY WHICH OF THESE LINES IS THE ACTUAL EXISTING GAS SERVICE TO 1488 CHAMBERS DRIVE. CONTRACTOR SHALL LOCATE AND REPLACE THE ACTUAL EXISTING GAS SERVICE LINE AS NECESSARY IN ORDER TO COMPLETE THE NEW WORK.
  3. CONTRACTOR SHALL LOCATE AND REPLACE THE EXISTING ELECTRIC LINE AS NECESSARY IN ORDER TO COMPLETE THE NEW WORK.
  4. CONTRACTOR SHALL LOCATE THE EXISTING ELECTRIC LINE AND COORDINATE ITS PROTECTION WITH AMEREN IN ORDER TO COMPLETE THE NEW WORK.
  5. CONTRACTOR SHALL LOCATE THE EXISTING TELEPHONE SERVICE LINE AND PROTECT IT IN ORDER TO COMPLETE THE NEW WORK.
  6. CONTRACTOR SHALL LOCATE THE EXISTING ELECTRIC SERVICE LINE AND PROTECT IT IN ORDER TO COMPLETE THE NEW WORK.
  7. CONTRACTOR SHALL LOCATE THE EXISTING CABLE LINE AND PROTECT IT IN ORDER TO COMPLETE THE NEW WORK.
  8. CONTRACTOR SHALL LOCATE THE EXISTING TELEPHONE LINE AND PROTECT IT IN ORDER TO COMPLETE THE NEW WORK.
  9. CONTRACTOR SHALL LOCATE THE EXISTING GAS MAIN AND PROTECT IT IN ORDER TO COMPLETE THE NEW WORK.
  10. CONTRACTOR SHALL LOCATE THE EXISTING WATER MAIN AND PROTECT IT IN ORDER TO COMPLETE THE NEW WORK.
  11. CONTRACTOR SHALL LOCATE AND REPLACE THE EXISTING IRRIGATION SYSTEM AS NECESSARY IN ORDER TO COMPLETE THE NEW WORK.

NOTE: HGL AND FLOWS ARE FOR A 25 YEAR, 20 MINUTE DESIGN STORM

THE PROFESSIONAL WHOSE SIGNATURE AND PERSONAL SEAL APPEAR HEREON, ASSUMES RESPONSIBILITY ONLY FOR WHAT APPEARS ON THIS PAGE, AND DISCLAIMS ANY RESPONSIBILITY FOR ALL OTHER PLANS, SPECIFICATIONS, ESTIMATES, REPORTS, OR OTHER DOCUMENTS OR INSTRUMENTS NOT SEALED BY THE UNDERSIGNED PROFESSIONAL RELATING TO OR INTENDED TO BE USED FOR ANY PART OR PARTS OF THE PROJECT TO WHICH THIS PAGE REFERS.

Engineer Seal

CHRISTOPHER M. BETTS, P.E.  
CIVIL ENGINEER  
MISSOURI NO. E-2000140006  
EXPIRES: 12-31-12

Designed C.M.B.  
Drawn C.M.B.  
Checked S.M.S.  
Date 9-28-12

REV.	DATE	DESCRIPTION	BY

CITY OF O'FALLON, MISSOURI  
100 NORTH MAIN STREET  
O'FALLON, MISSOURI 63366

BRYAN VALLEY  
STORM WATER IMPROVEMENTS

EDM Incorporated  
220 Mansion House, 3rd Floor  
St. Louis, Missouri 63102  
(314) 231-5485 Fax: (314) 231-8167  
Certificate of Authority #00161445

Project No. 10165.00  
Sheet No. 5

SCALES: 1"=10' HORZ.  
1"= 5' VERT.