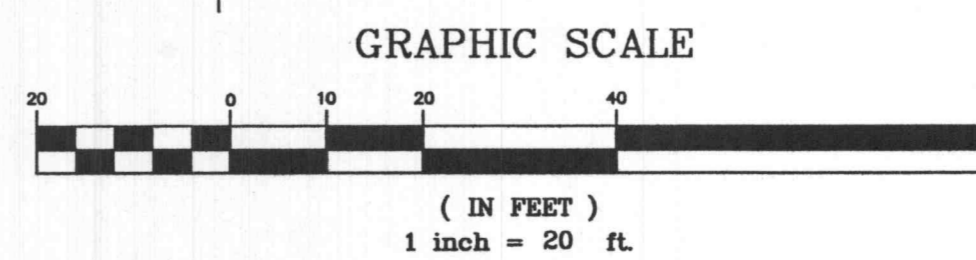
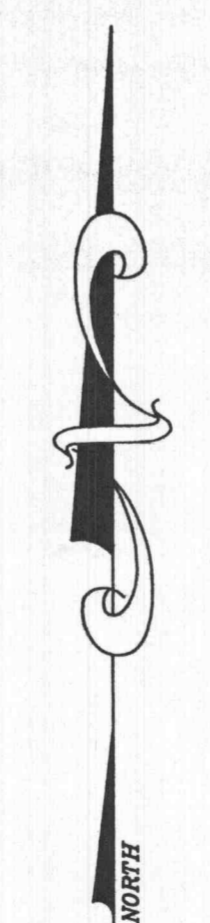
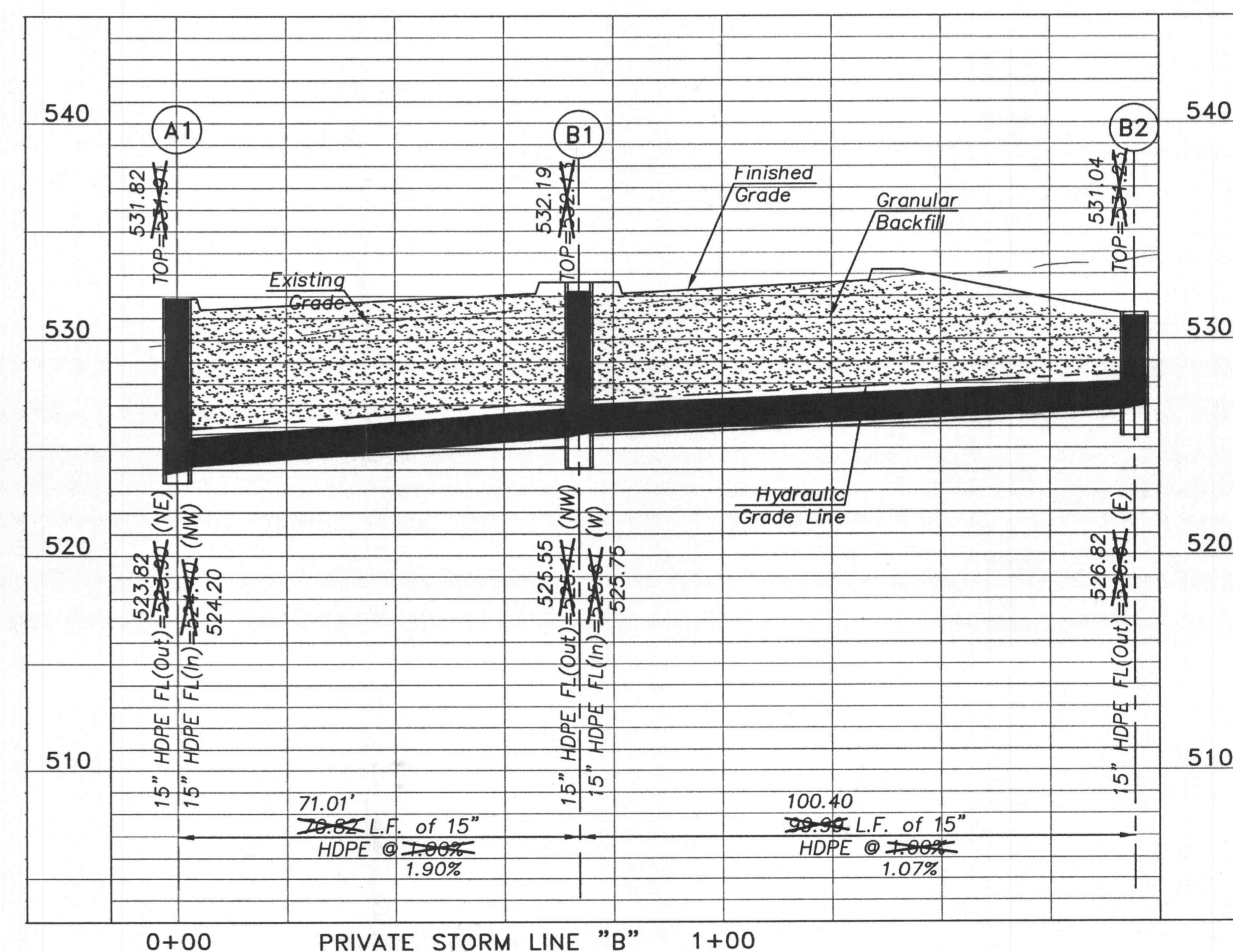
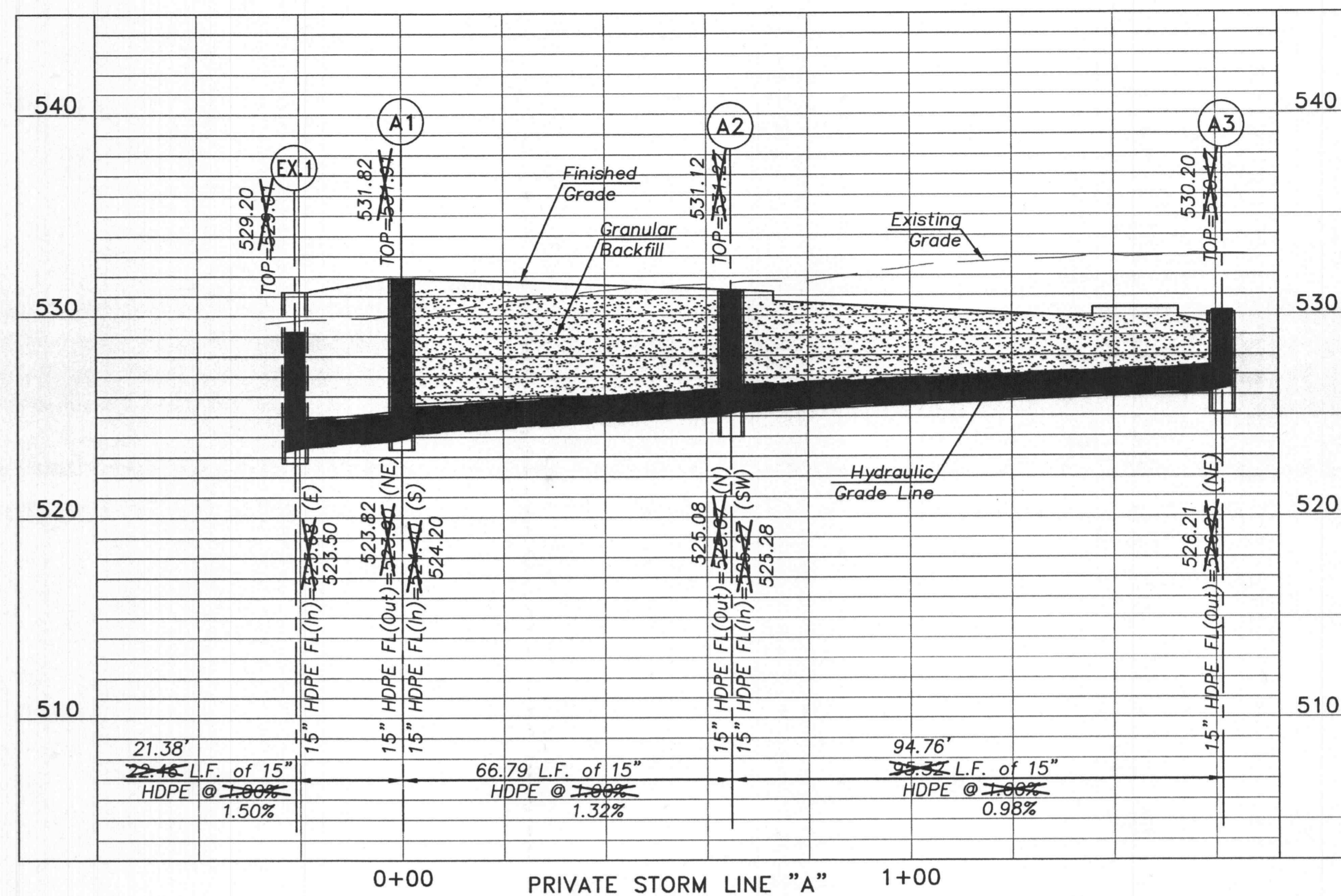
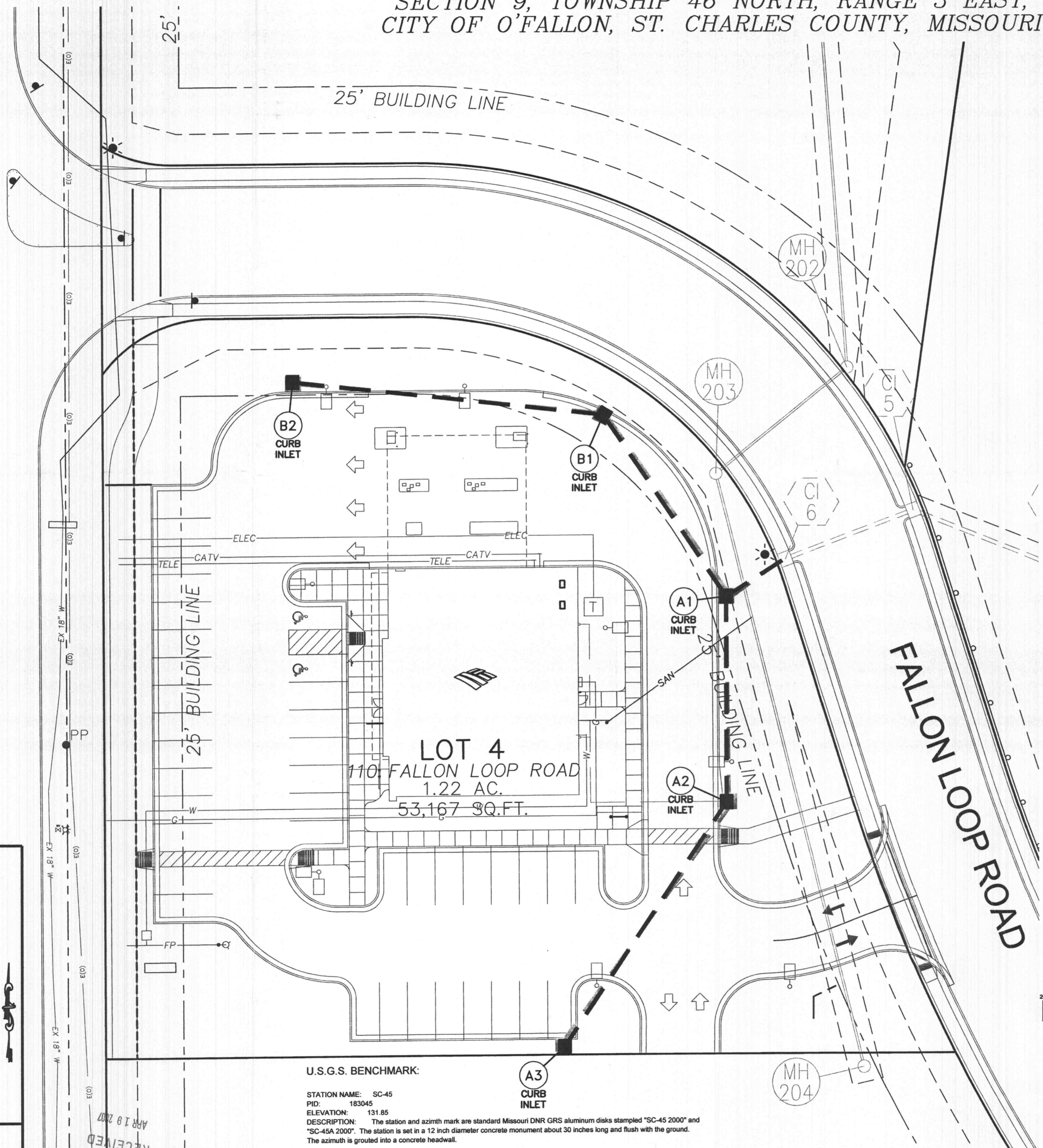


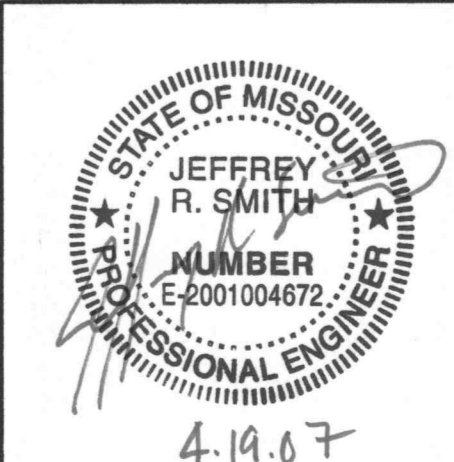
APPROVED  
4-26-07 98

# AS-BUILT PLANS FOR BANK OF AMERICA HIGHWAY K & FALLON PARKWAY

A TRACT OF LAND BEING PART OF FRACTIONAL  
SECTION 9, TOWNSHIP 46 NORTH, RANGE 3 EAST,  
CITY OF O'FALLON, ST. CHARLES COUNTY, MISSOURI



PREPARED FOR:  
BLANTON CONSTRUCTION  
28 PATMOS  
ST. PETERS, MISSOURI 63376  
TELEPHONE: (636) 928-4444



DATE: NO.:		REVISION:			
<b>MUSLER ENGINEERING COMPANY</b>					
CIVIL ENGINEERING - PLANNING - LAND SURVEYING					
32 Portwest Court, St. Charles, Missouri 63303					
Telephone: (636) 916-0444					
DATE:	DRAWN:	CHECKED:	PROJECT NO.:	SHEET NO.:	
APRIL 2007	J.R.S.		02-895-4	1 OF 1	

