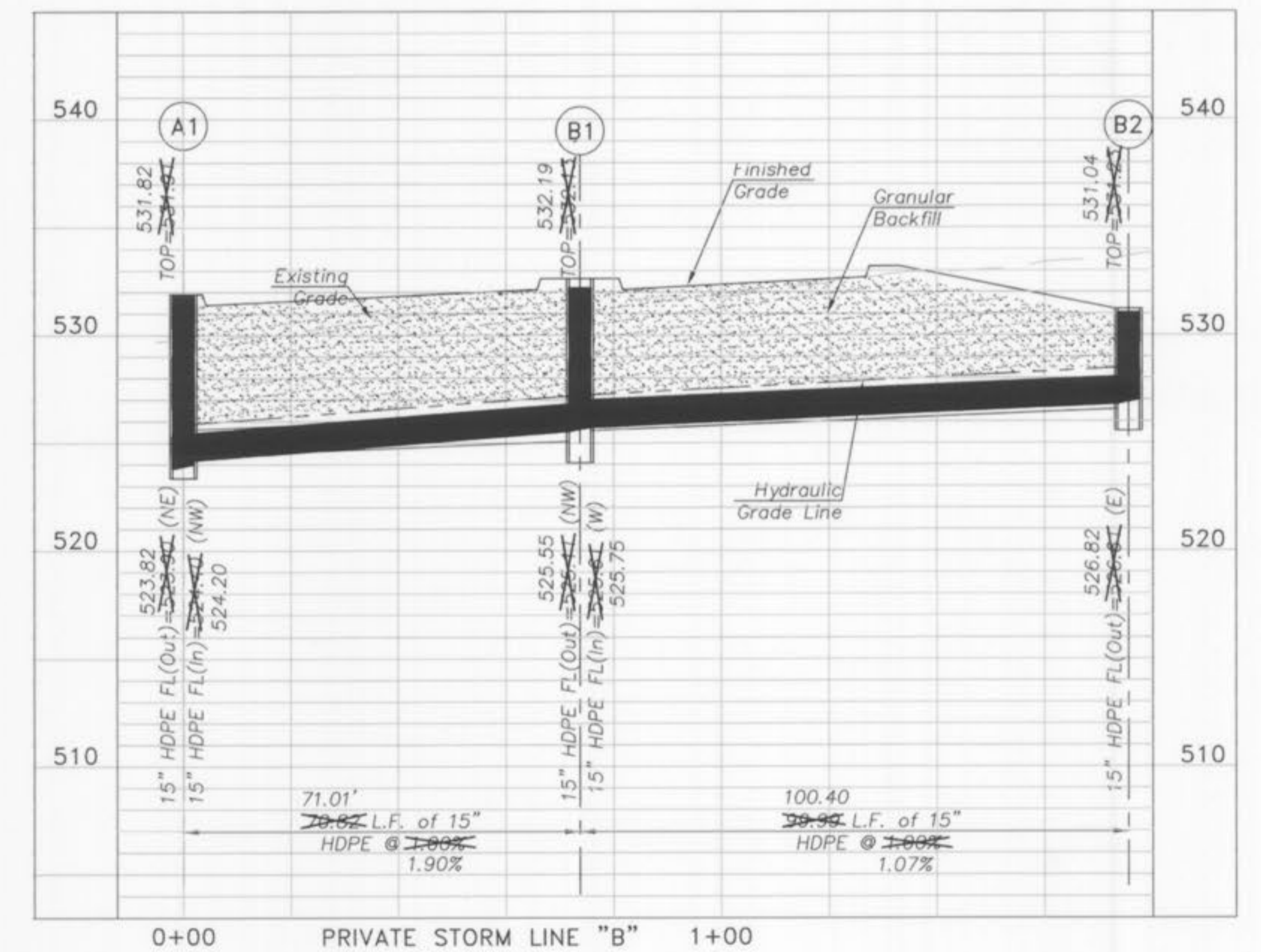
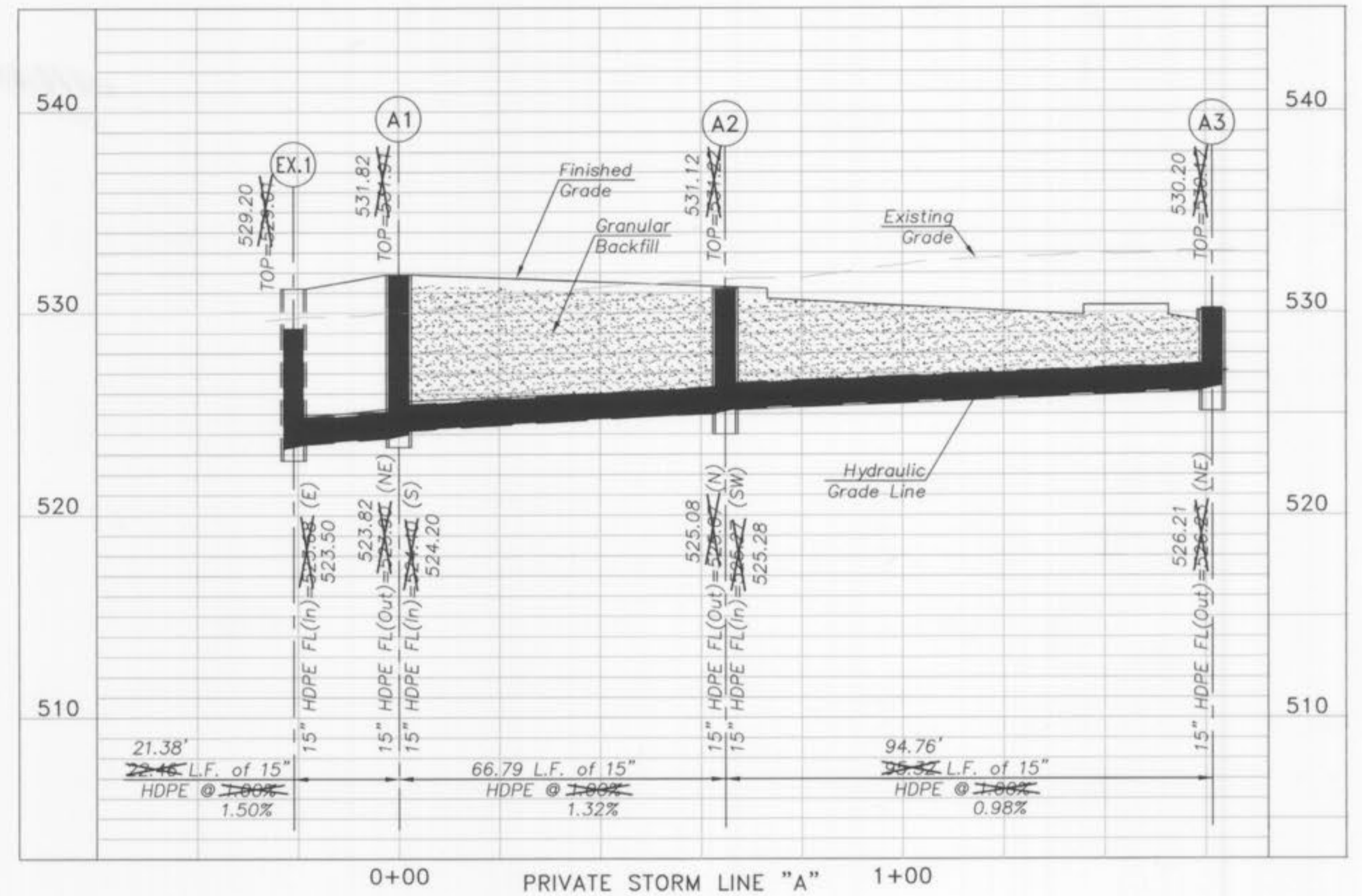
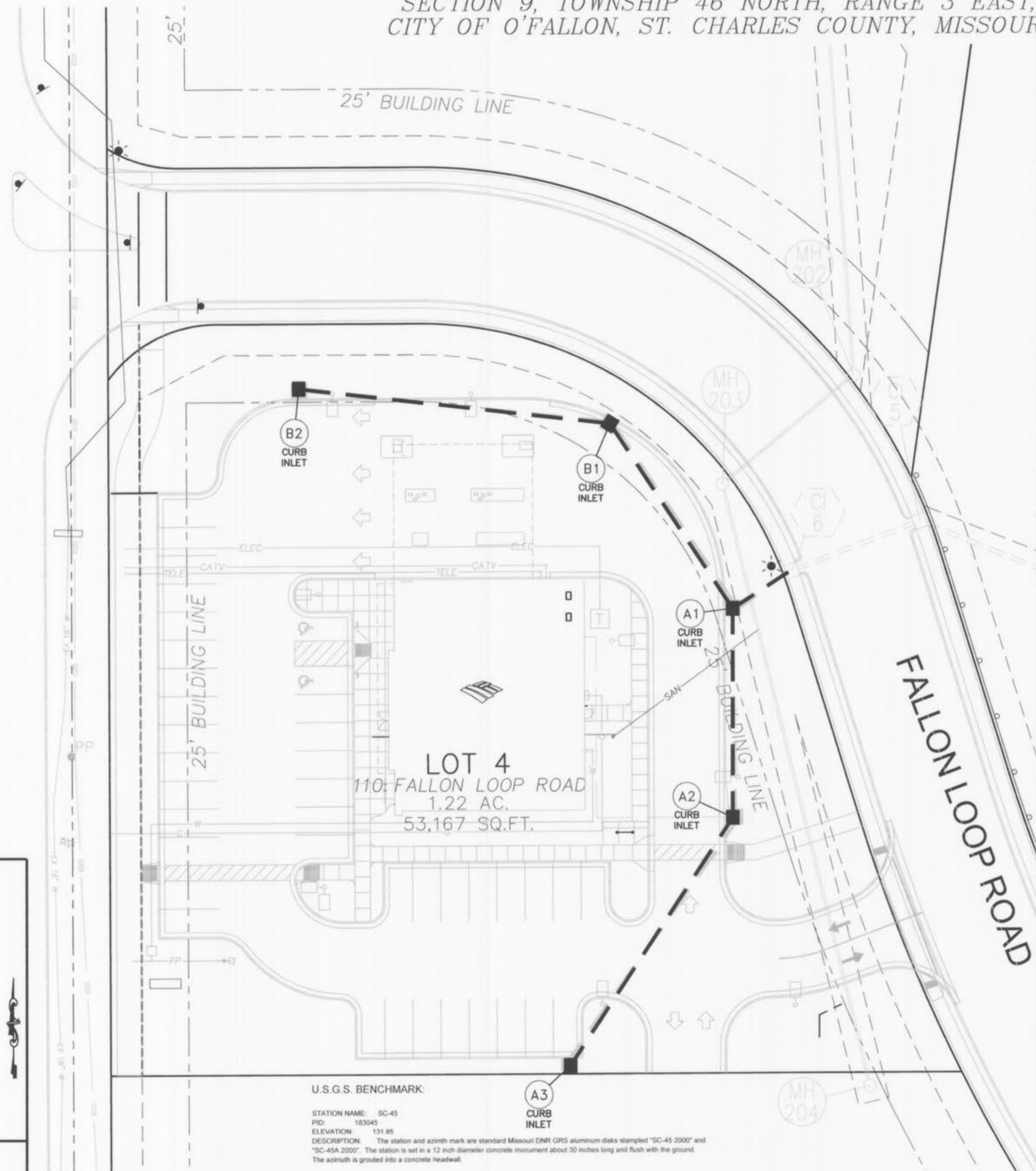
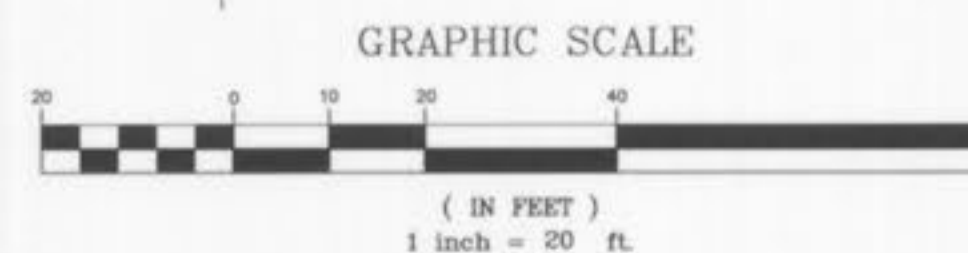


**AS-BUILT PLANS FOR  
BANK OF AMERICA  
HIGHWAY K & FALLON PARKWAY**  
A TRACT OF LAND BEING PART OF FRACTIONAL  
SECTION 9, TOWNSHIP 46 NORTH, RANGE 3 EAST,  
CITY OF O'FALLON, ST. CHARLES COUNTY, MISSOURI



**LOCATION MAP**  
N.T.S.

U.S.G.S. BENCHMARK:  
STATION NAME: SC-45  
PID: 183045  
ELEVATION: 131.85  
DESCRIPTION: The station and azimuth mark are standard Missouri DNR GRS aluminum disks stamped "SC-45 2000" and "SC-45A 2000". The station is set in a 12 inch diameter concrete monument about 30 inches long and flush with the ground. The azimuth is grouted into a concrete headwall.



PREPARED FOR:  
BLANTON CONSTRUCTION  
28 PATMOS  
ST. PETERS, MISSOURI 63376  
TELEPHONE: (636) 928-4444



DATE:	NO.:	REVISION:
<b>MUSLER ENGINEERING COMPANY</b>		
CIVIL ENGINEERING - PLANNING - LAND SURVEYING		
32 Portwest Court, St. Charles, Missouri 63303		
Telephone: (636) 916-0444		
DATE: APRIL 2007	DRAWN: J.R.S.	CHECKED:
PROJECT NO.:	02-695-4	SHEET NO.:
		1 OF 1