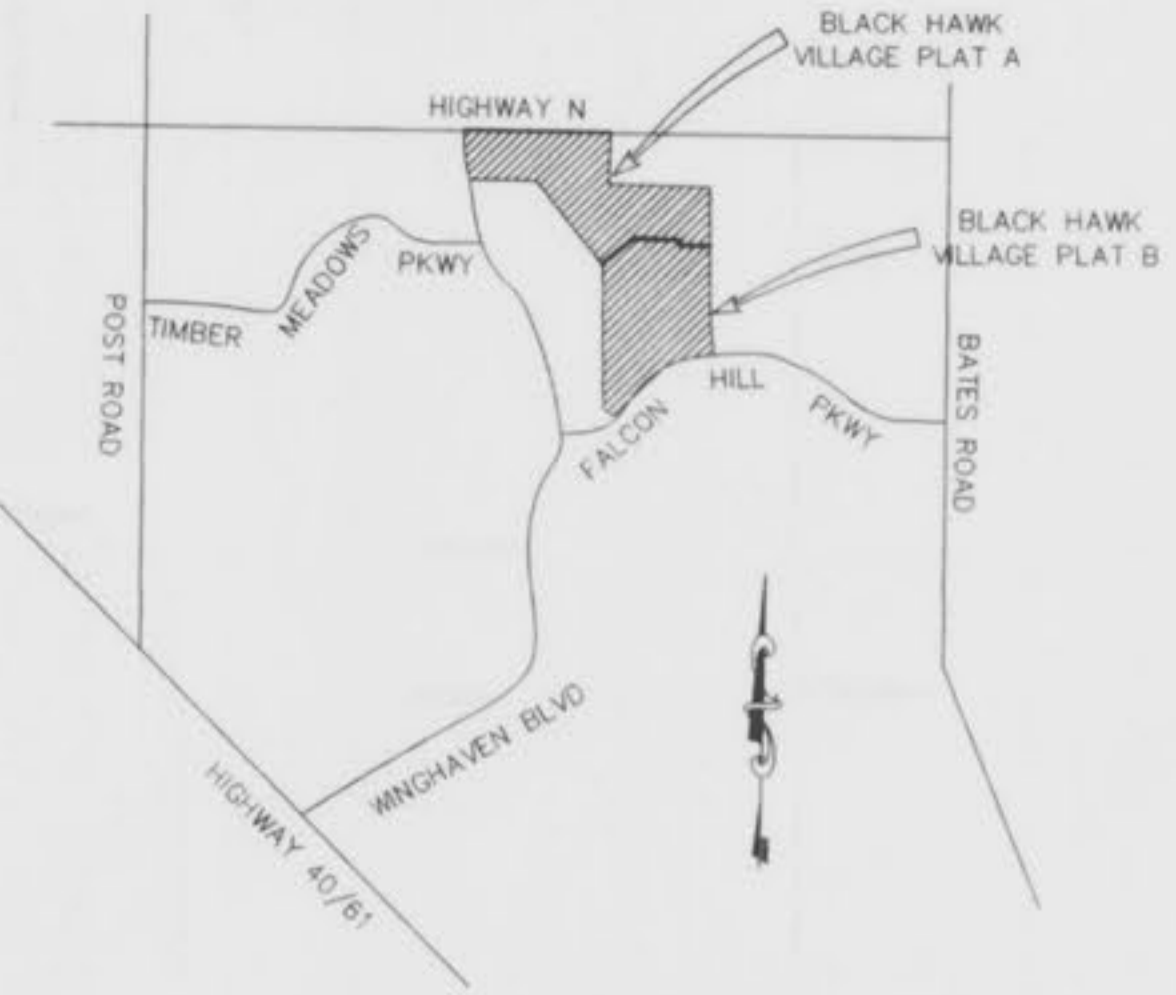
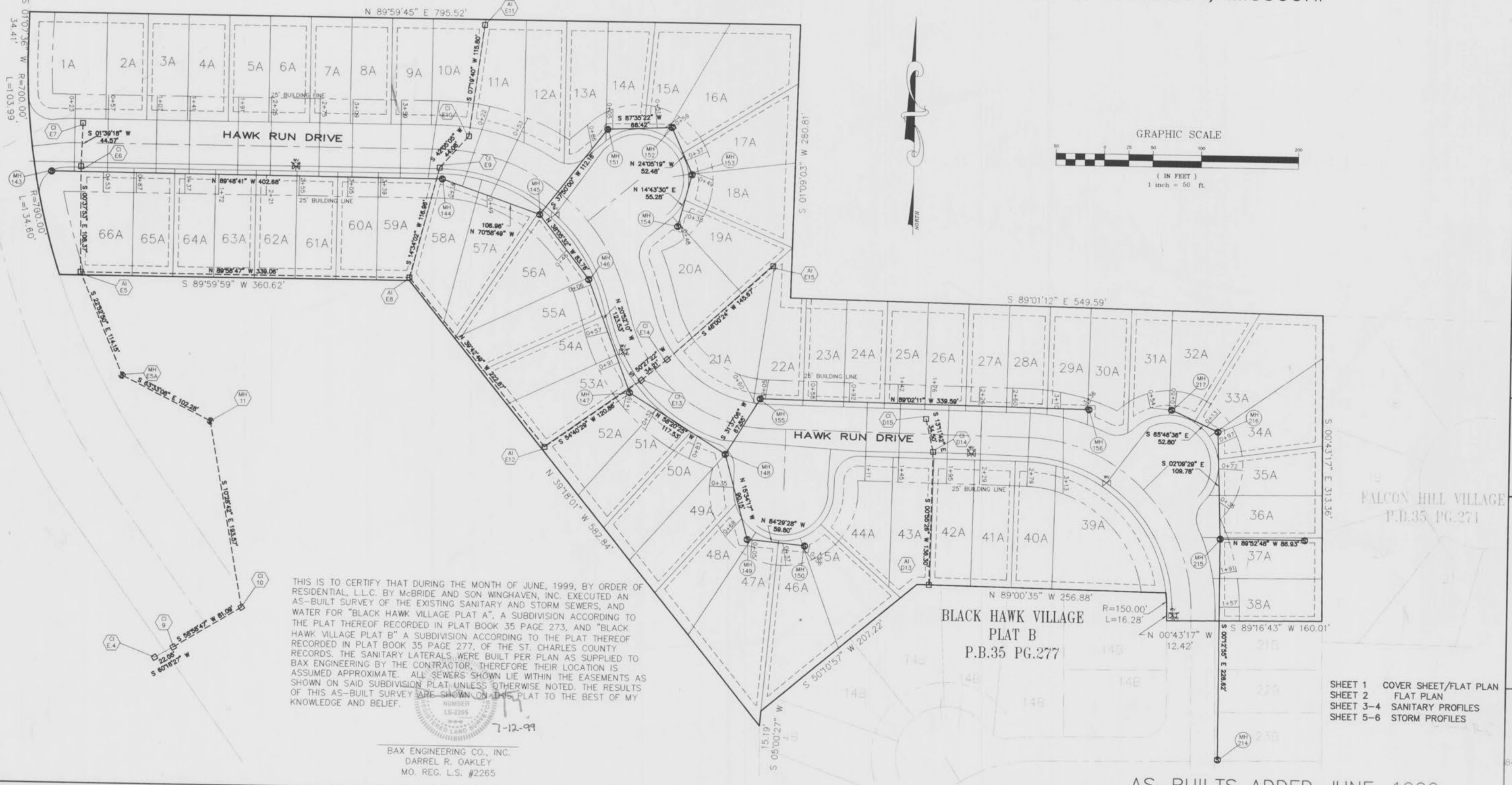


SEWER & WATER AS-BUILTS OF  
**BLACK HAWK VILLAGE PLAT A**  
 PLAT BOOK 35 PAGE 273  
**BLACK HAWK VILLAGE PLAT B**  
 PLAT BOOK 35 PAGE 277

A TRACT OF LAND BEING  
 PART OF U.S. SURVEY NO. 1669 AND  
 PART OF SECTION 11 AND 12  
 TOWNSHIP 46 NORTH, RANGE 2 EAST  
 CITY OF O'FALLON, MISSOURI

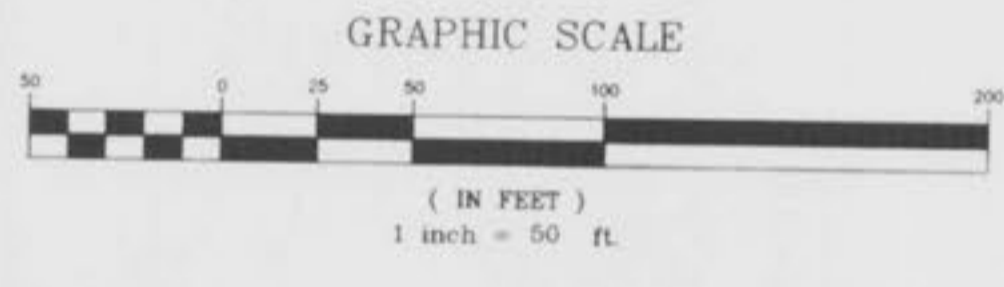


LOCATION MAP  
NOT TO SCALE



THIS IS TO CERTIFY THAT DURING THE MONTH OF JUNE, 1999, BY ORDER OF RESIDENTIAL, L.L.C. BY McBRIDE AND SON WINGHAVEN, INC. EXECUTED AN AS-BUILT SURVEY OF THE EXISTING SANITARY AND STORM SEWERS, AND WATER FOR "BLACK HAWK VILLAGE PLAT A", A SUBDIVISION ACCORDING TO THE PLAT THEREOF RECORDED IN PLAT BOOK 35 PAGE 273, AND "BLACK HAWK VILLAGE PLAT B" A SUBDIVISION ACCORDING TO THE PLAT THEREOF RECORDED IN PLAT BOOK 35 PAGE 277, OF THE ST. CHARLES COUNTY RECORDS. THE SANITARY LATERALS WERE BUILT PER PLAN AS SUPPLIED TO BAX ENGINEERING BY THE CONTRACTOR, THEREFORE THEIR LOCATION IS ASSUMED APPROXIMATE. ALL SEWERS SHOWN LIE WITHIN THE EASEMENTS AS SHOWN ON SAID SUBDIVISION PLAT UNLESS OTHERWISE NOTED. THE RESULTS OF THIS AS-BUILT SURVEY ARE SHOWN ON THIS PLAT TO THE BEST OF MY KNOWLEDGE AND BELIEF.

7-12-99  
 BAX ENGINEERING CO., INC.  
 DARREL R. OAKLEY  
 MO. REG. L.S. #2265



PREPARED FOR:  
 WINGHAVEN RESIDENTIAL, L.L.C. BY  
 McBRIDE AND SON HOMES, INC.  
 CHESTERFIELD, MISSOURI 63005  
 (314) 537-2000

DISCLAIMER OF RESPONSIBILITY  
 I hereby certify that the documents intended to be authorized by my seal are limited to this sheet, and I hereby disclaim any responsibility for all other Drawings, Specifications, Estimates, Reports or other documents or instruments relating to or intended to be used for any part or parts of the architectural or engineering project or survey.

Copyright 1999  
 Bax Engineering Company, Inc.  
 All Rights Reserved.

REVISIONS

NO.	DESCRIPTION	DATE



1052 South Cloverleaf Drive  
 St. Peters, MO. 63376-6445  
 314-928-5552  
 FAX 928-1718

SHEET 1 COVER SHEET/FLAT PLAN  
 SHEET 2 FLAT PLAN  
 SHEET 3-4 SANITARY PROFILES  
 SHEET 5-6 STORM PROFILES

6-29-99  
 DATE  
 97-8470A  
 PROJECT NUMBER  
 1 OF 6  
 SHEET OF  
 8470A-ASB-EH-A.dwg  
 FILE NAME  
 DWM RLF  
 DRAWN CHECKED

AS-BUILTS ADDED JUNE, 1999

BLACK HAWK VILLAGE  
PLAT A  
P.B.35 PG.273

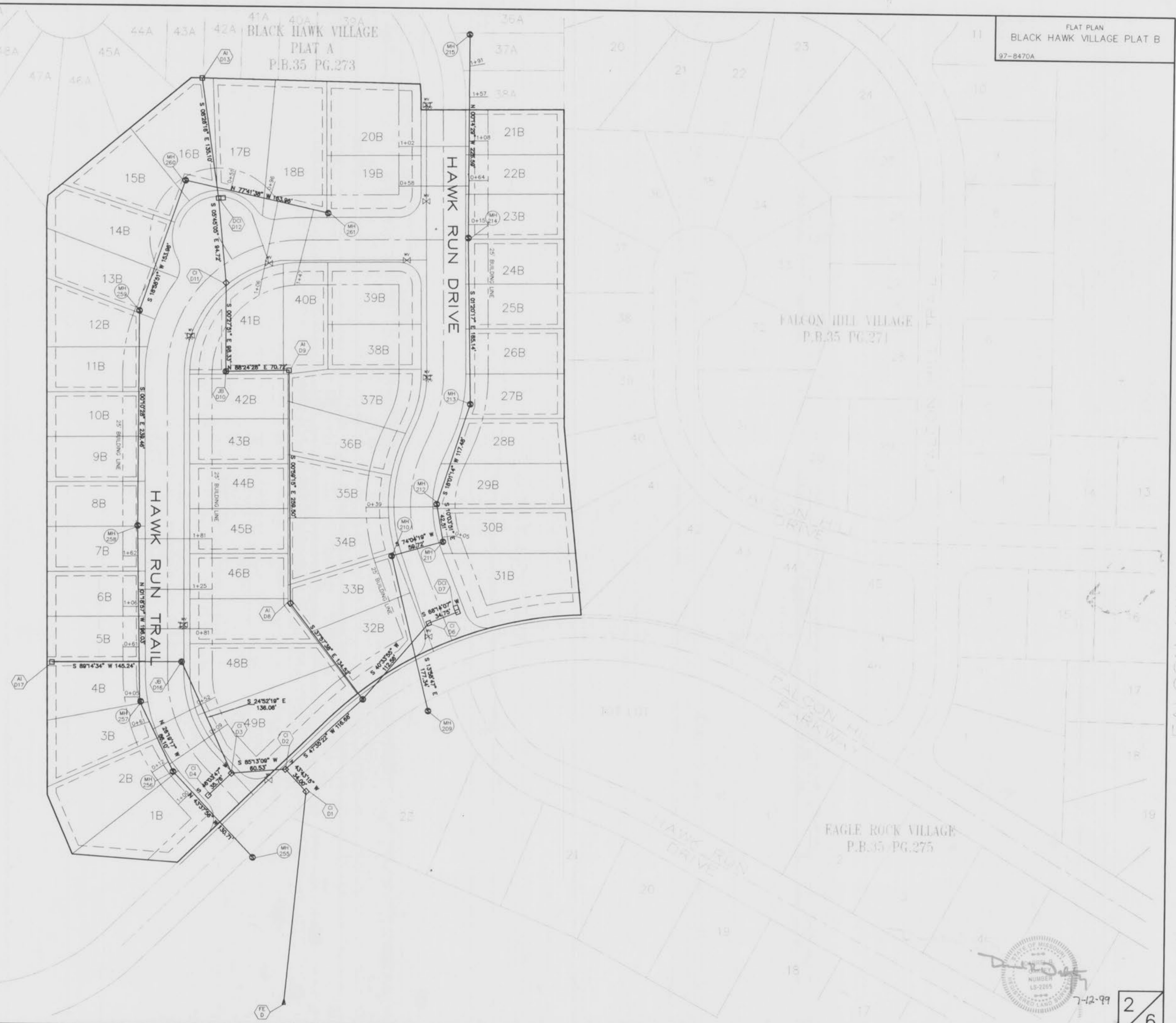
FALCON HILL VILLAGE  
P.B.35 PG.271

EAGLE ROCK VILLAGE  
P.B.35 PG.275

WINGHAVEN BLVD.

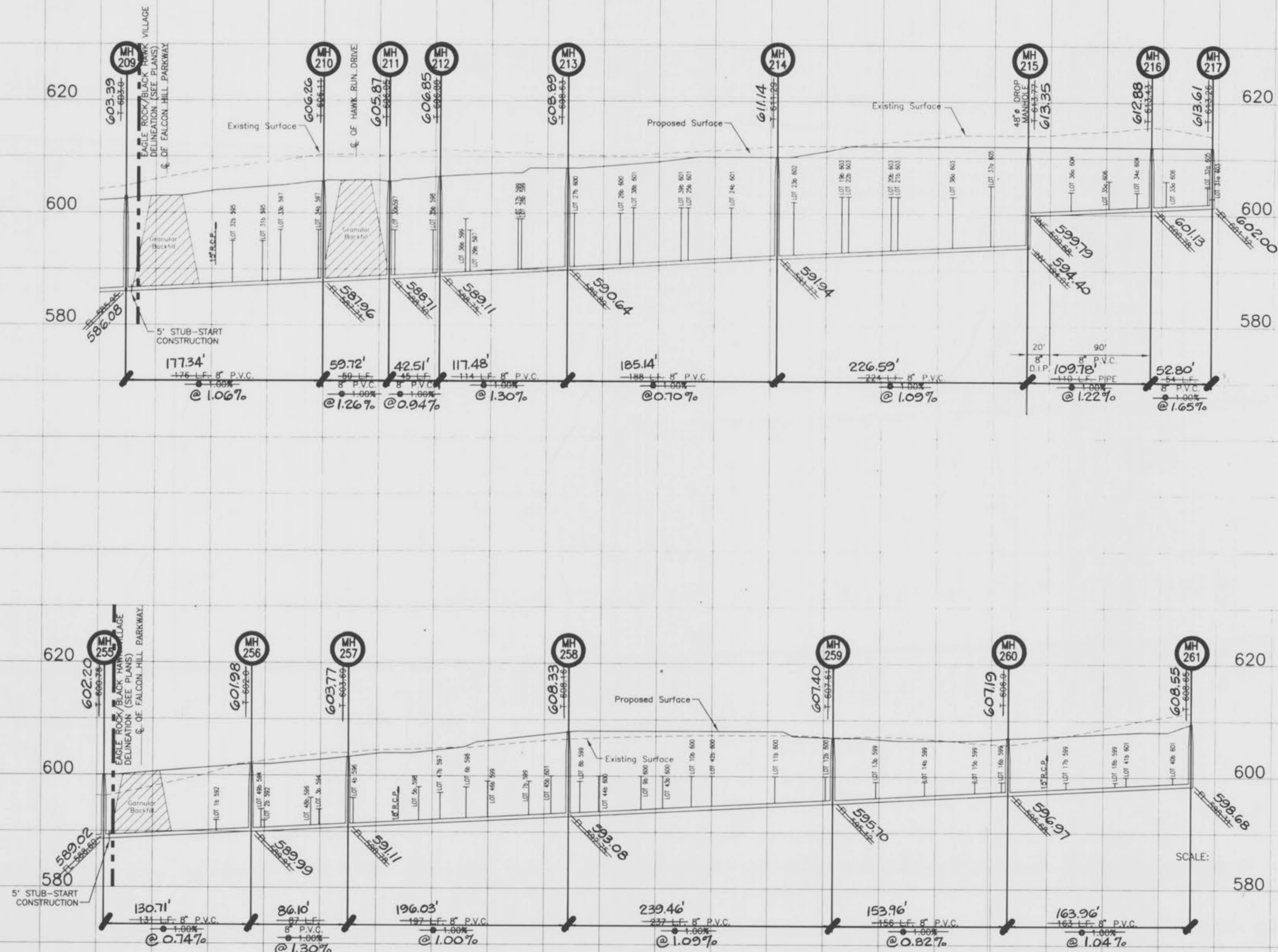
HAWK RUN DRIVE

HAWK RUN TRAIL



\\baa\d-pr\1ve\lwg\180000\18470a-ast-dh-b.dwg Thu Jul 08 11:01:47 1999 DMW

J:\1970231\0001\WDR\1970231\1970231\1970231\1970231.dwg REV. JUL 29 14:59:51 1999 PLOTTED BY TERN-CYC



WINGHAVEN PHASE I  
 IMPROVEMENT PLANS FOR  
 BLACK HAWK VILLAGE  
 PART OF U.S. SURVEY NO. 1669  
 AND PART OF SECTIONS 11 & 12  
 TOWNSHIP 46 NORTH, RANGE 2 EAST  
 CITY OF O'FALLON, MISSOURI

Kuhlmann  
 Design  
 Group, Inc.  
 15 E. Washington  
 Belleville, IL 62220-1421  
 Tel: (618) 234-8898  
 Malesville, Illinois  
 St. Charles, Missouri

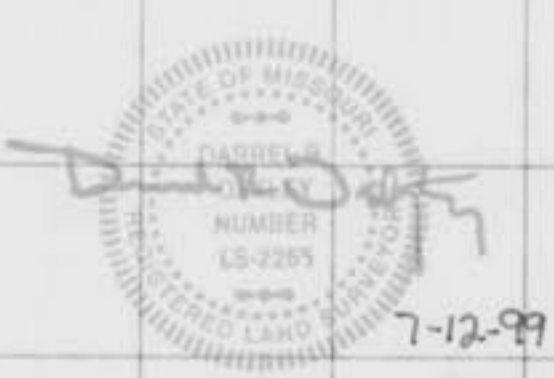


DISCLAIMER OF RESPONSIBILITY  
 I hereby specify that the documents intended to be authorized by my seal are limited to this sheet, and I hereby disclaim any responsibility for all other drawings, specifications, estimates, reports or other documents or instruments relating to or intended to be used for any part or parts of the infrastructure or engineering project or survey.

NO.	DATE	PER	DCSD
1	06/24/98	PER	DCSD
2	07/16/98	PER	DCSD
3	07/27/98	PER	DCSD
4	07/29/98	PER	DCSD

PROJECT NO.	CONTRACT NO.
970231	0002
DRAWN	CHECKED
BSM	DLK
DATE	
	05/29/98



BLACK HAWK  
 SANITARY SEWER  
 PROFILES  
 SHEET 3 OF 6  
 C3.3

"AS-BUILTS ADDED JUNE, 1999" SCALE: 1"=50' HORIZ. 1"=10' VERT.

WINGHAVEN PHASE I  
IMPROVEMENT PLANS FOR  
BLACK HAWK VILLAGE

PART OF U.S. SURVEY NO. 1669  
AND PART OF SECTIONS 11 & 12  
TOWNSHIP 46 NORTH, RANGE 2 EAST  
CITY OF O'FALLON, MISSOURI

Kuhlmann  
Design  
Group, Inc.

15 E. Washington  
Bellefonte, IL 62220-1421  
Tel: (618) 234-8898  
Bellefonte, Illinois  
R. Charles, Missouri

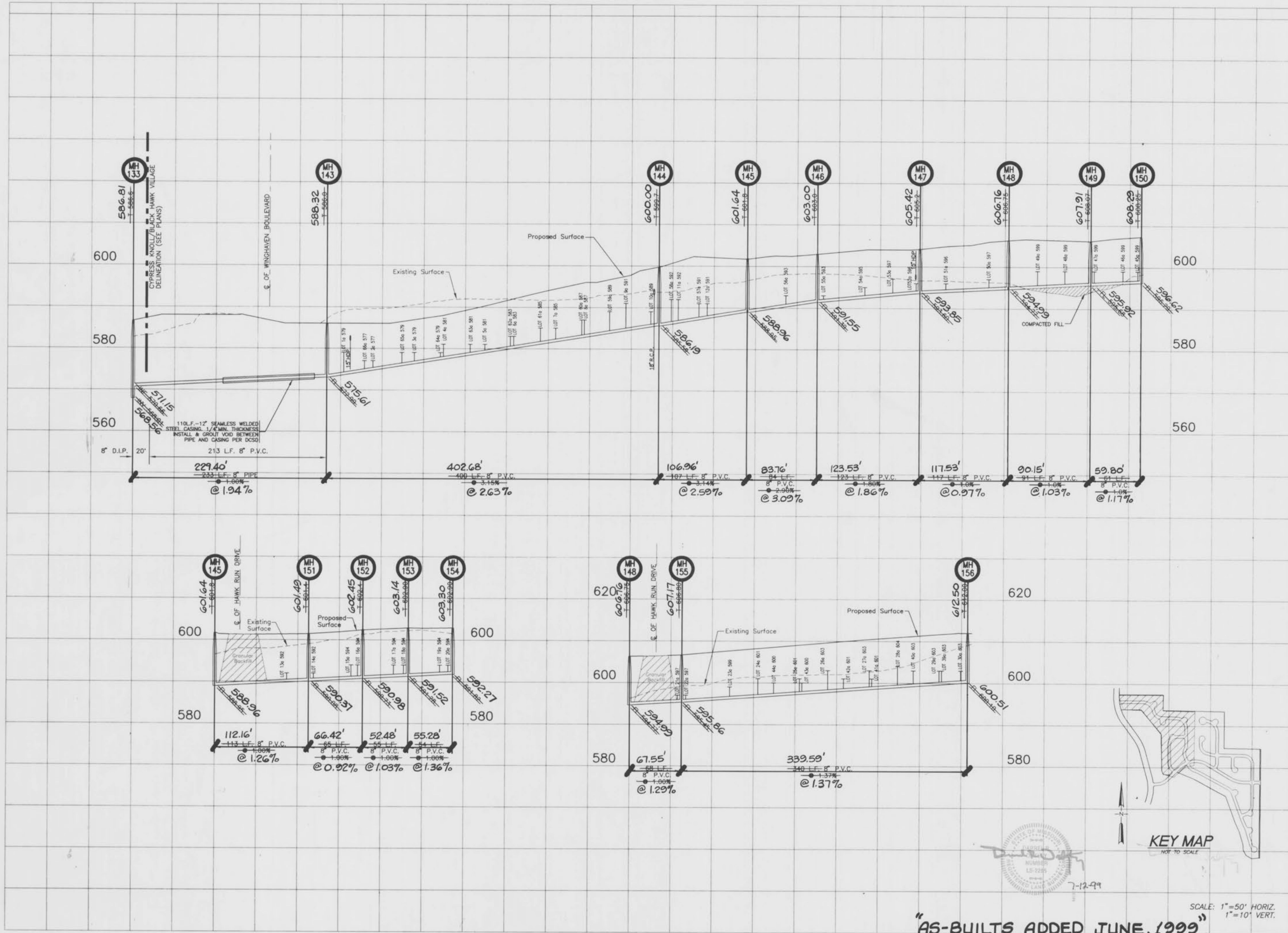


DISCLAIMER OF RESPONSIBILITY  
I hereby specify that the documents intended to be authorized by my seal are limited to the sheet, and I hereby disclaim any responsibility for all other Drawings, Specifications, Estimates, Reports or other documents or instruments relating to or intended to be used for any part or parts of the architectural or engineering project or survey.

NO.	DATE	PER
1	06/24/98	PER DCSD
2	06/25/98	PER DCSD
3	07/16/98	PER DCSD
4	07/29/98	PER DCSD

PROJECT NO. 970231 CONTRACT NO. 0002  
DRAWN BSM CHECKED DLK  
DATE 05/29/98

BLACK HAWK  
SANITARY SEWER  
PROFILES  
SHEET 4 OF 6  
C34



7-12-99

SCALE: 1" = 50' HORIZ.  
1" = 10' VERT.

"AS-BUILTS ADDED JUNE, 1999"

WINGHAVEN PHASE I  
IMPROVEMENT PLANS FOR  
BLACK HAWK VILLAGE

PART OF U.S. SURVEY NO. 1669  
AND PART OF SECTIONS 11 & 12  
TOWNSHIP 46 NORTH, RANGE 2 EAST  
CITY OF FALLON, MISSOURI

Kuhlmann  
Design  
Group, Inc.  
#6 Westbury Drive  
St. Charles, Missouri 63301  
Tel: (314) 946-5566  
M. Lewis, Missouri  
M. Lewis, Missouri  
M. Lewis, Missouri



DISCLAIMER OF RESPONSIBILITY  
I hereby specify that the documents intended to be authorized by my seal are limited to the sheet, and I hereby disclaim any responsibility for all other Drawings, Specifications, Estimates, Reports or other documents or instruments relating to or intended to be used for any part or parts of the architectural or engineering project or survey.

NO.	DATE	PER
1	06/24/98	PER O'FALLON
2	07/17/98	PER O'FALLON
3	08/11/98	PIPE SIZE

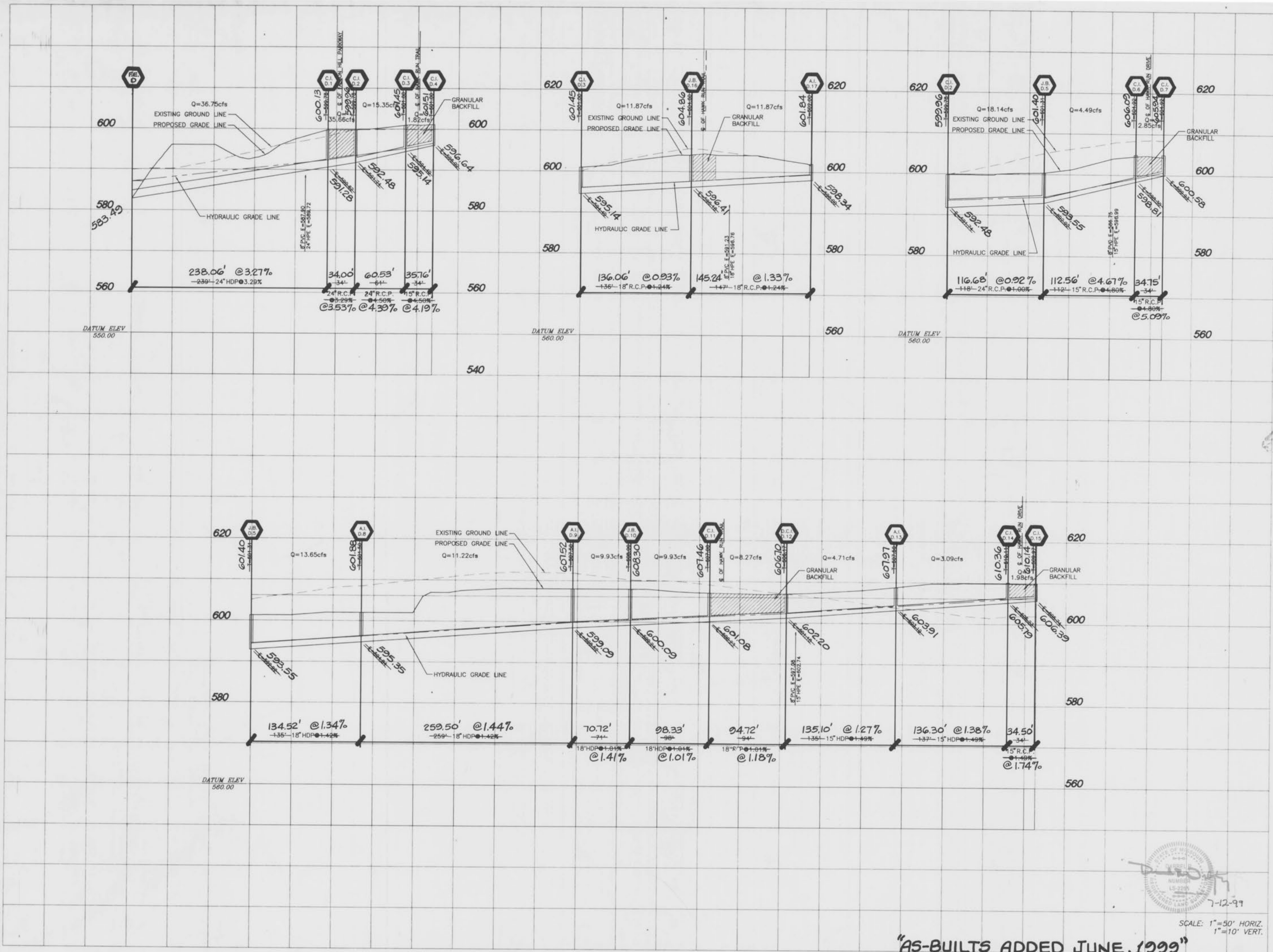
PROJECT NO.	CONTRACT NO.
970231	0002
DRAWN	CHECKED
FPB	SYE

DATE 05/29/98

BLACK HAWK  
STORM SEWER  
PROFILES

SHEET 5 OF 6  
C35

Copyright © 1998 Kuhlmann Design Group, Inc. All rights reserved.



SCALE: 1"=50' HORIZ.  
1"=10' VERT.

"AS-BUILTS ADDED JUNE, 1999"

J:\970231\0001\WCS\PHASE I\BLACK HAWK\C35.dwg 05/29/98 15:14:45 1998 Plotted by: TERK\_BJ

WINGHAVEN PHASE I  
IMPROVEMENT PLANS FOR  
BLACK HAWK VILLAGE

PART OF U.S. SURVEY NO. 1669  
AND PART OF SECTIONS 11 & 12  
TOWNSHIP 46 NORTH, RANGE 2 EAST  
CITY OF FALLON, MISSOURI

Kuhlmann  
Design  
Group, Inc.  
#6 Westbury Drive  
St. Charles, Missouri 63301  
Tel: (314) 946-5566  
St. Louis, Missouri  
Belleville, Illinois  
St. Charles, Missouri



DISCLAIMER OF RESPONSIBILITY  
I hereby specify that the documents intended to be authorized by my seal are limited to the sheet, and I hereby disclaim any responsibility for all other Drawings, Specifications, Estimates, Reports or other documents or instruments relating to or intended to be used for any part or parts of the architectural or engineering project or survey.

NO.	DATE	REVISION
1	07/31/98	REVISED LAYOUT
2	08/10/98	REVISED LAYOUT

PROJECT NO. 970231	CONTRACT NO. 0002
DRAWN FPB	CHECKED SYE
DATE 05/29/98	

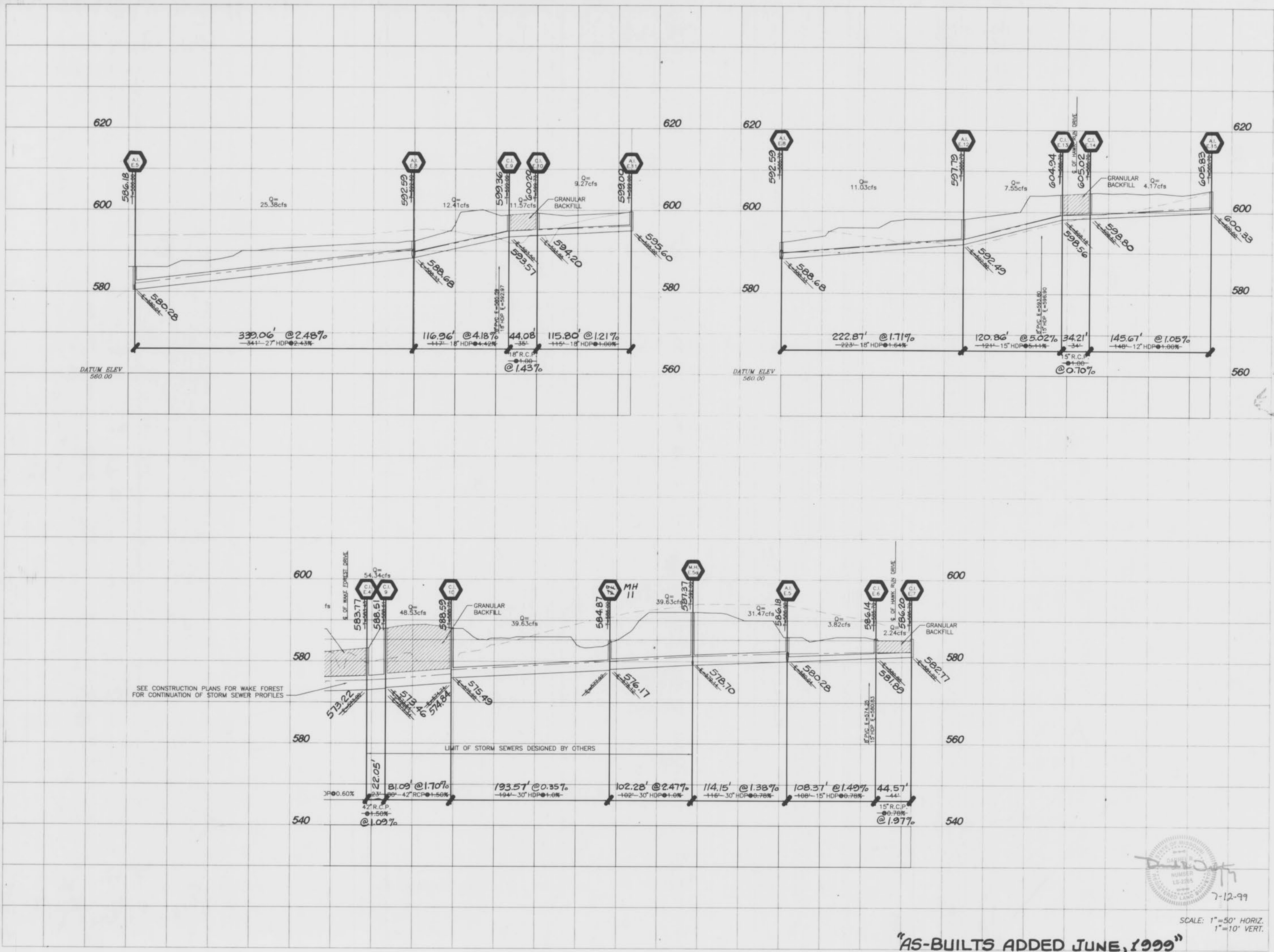
BLACK HAWK  
STORM SEWER  
PROFILES

SHEET 6 OF 6  
C3.6



SCALE: 1"=50' HORIZ.  
1"=10' VERT.

"AS-BUILTS ADDED JUNE, 1999"



J:\970231\0001\WCR\PHASE I\BLACK HAWK\C3.6.dwg Tue Aug 11 08:27:21 1998 Plotted by TERNJU