

WINGHAVEN

PHASE 3

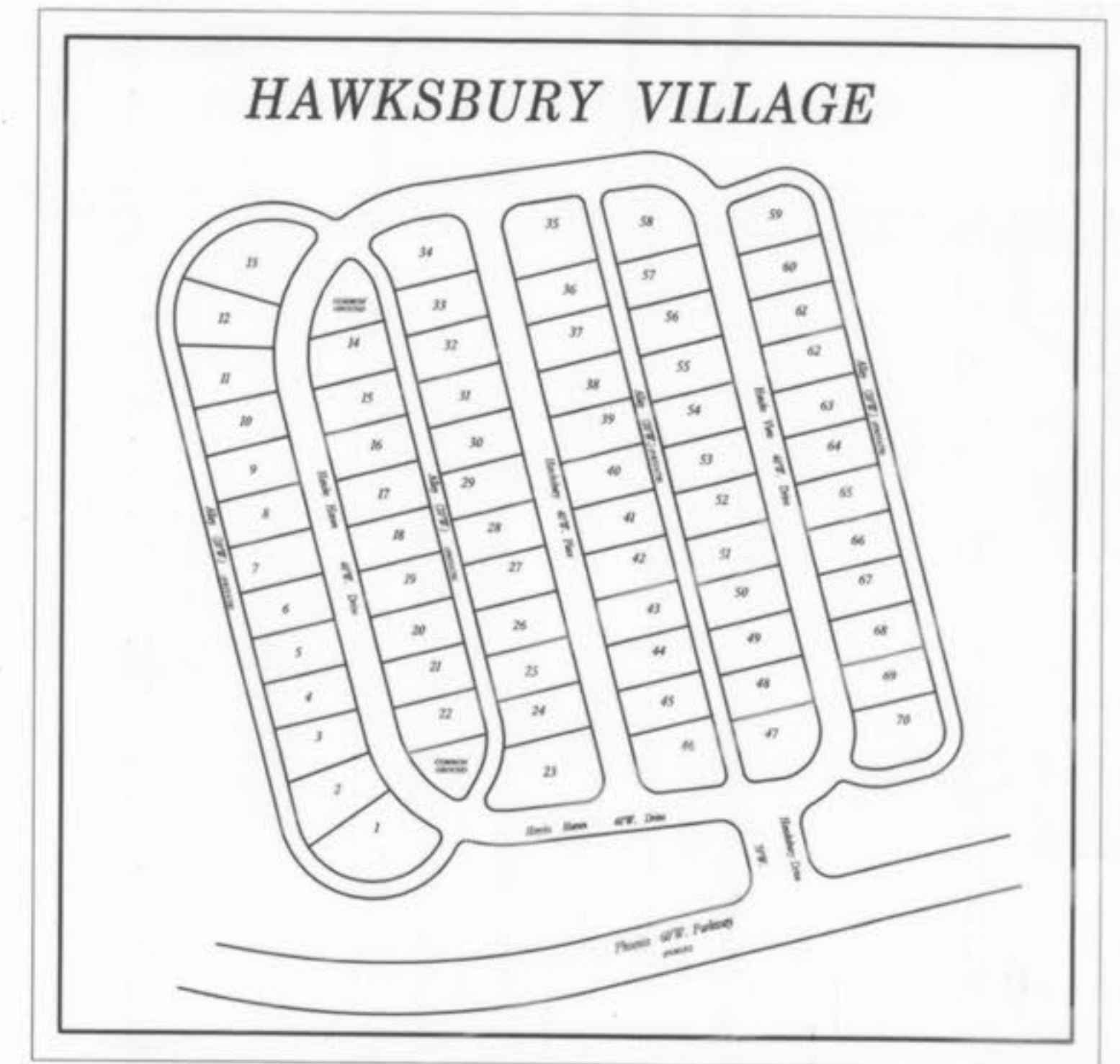
HAWKSURY VILLAGE

SANITARY SEWER RELOCATION

FINAL SEWER MEASUREMENTS

WINGHAVEN RESIDENTIAL L.L.C.
McBRIDE & SON HOMES INC.

VOLZ



The existing sewer lengths, sizes, flowlines, depths of structures and sewers and locations with respect to existing or proposed easements have been measured. The results of those measurements are shown on this set of Final Measurement Plans. Since the wye locations have been plotted from information provided by the sewer contractor or other sources, I disclaim any responsibility for that specific information.

All public sewers are located within designated existing or proposed easements except as shown in this drawing.

The results of those measurements are shown on this drawing by lining out the planned number and indicating the measured number adjacent to the planned number. All other numbers shown have not been measured or verified.

The location of the sewers were determined by locating the manholes and traversing in a straight line between them.

No hydraulic computations have been done on the measured lines to verify or confirm the capacity, freeboard or design requirements of the sewers.

Roger G. Allen
Roger G. Allen
Mo. Reg. L.S. 2185

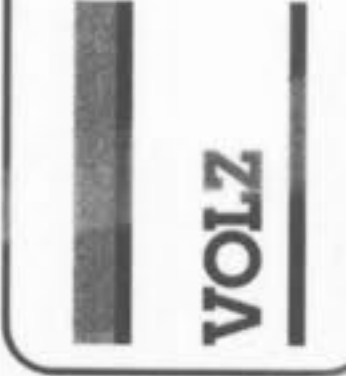
STATE OF MISSOURI
2-10-04
LS-2185
ROGER G. ALLEN
PROFESSIONAL LAND SURVEYOR

LINE	STRUCTURES	UPPER		LENGTH	SIZE	FLOWLINE			UPPER STRUCTURE			HYDRAULIC			FRICTION		VELOCITY			TURN		QUANTITY		CAPACITIES						
		UPPER	LOWER			UPPER	LOWER	GRADE	ELEVATION	FREEBOARD	UPPER	LOWER	GRADE	LOSS	FPS	HEAD GAIN	ANGLE	LOSS	AREA	PI	INCR	TOTAL	***	PIPE	INLET	GUTTER	P.V.	BYPASS		
12	2 STRUCTURES			67.5	15	498.58	497.96	.009				501.05	500.82	.0034	.23	3.08	.15	.00	0	.00	.79	2.64	3.78	3.78	498.58	HW	6.19		5.15	
FE	42 2GI 25																													

*** AIs # of sides open & depth of sill
 CIs street grade at inlet
 GIs depth over grate

* lower hydraulic elevation when flowing less than full
 C curve loss in pipe
 R radius of curve
 HW entrance control elevation
 pv partial flow velocity

WINGHAVEN
RESIDENTIAL L.L.C.
* MCBRIDE & SON
CENTER DRIVE
ST. LOUIS, MISSOURI 63005
PHONE (636) 337-2000



WINGHAVEN

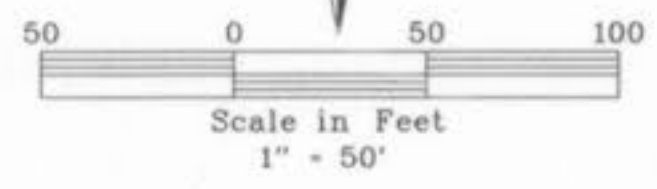
HAWKSURRY VILLAGE

SITE PLAN
AS-BUILT

Design By: B.G.
Drawn By: B.D.B.
Checked By: T.A.
7/31

02-10-14
10

MARTEL SUBDIVISION
PB. 8 PG. 24



NAME OF DEVELOPMENT:
WINGHAVEN PHASE 3 - HAWKSURRY VILLAGE
NUMBER OF LOTS - 70
BUILDING SETBACKS - 15' FRONT
5' REAR
6' SIDE

DRIVEWAY LOCATION SHALL NOT INTERFERE WITH THE SIDEWALK HANDICAP RAMPS.
DEVELOPER MUST SUPPLY CITY CONSTRUCTION INSPECTORS WITH SOIL REPORT PRIOR TO OR DURING SITE SOIL TESTING.
ALL UTILITIES TO BE LOCATED UNDERGROUND.

CONCRETE ENCASE BOTH SANITARY AND STORM SEWERS AT CROSSINGS WHEN STORM SEWER IS WITHIN 3' ABOVE SANITARY. ENCASUREMENTS TO BE SEPARATED BY 30LBS FELT PAPER. ADD CONCRETE CRADLE TO ALL STORM SEWER AND SANITARY SEWER CROSSINGS THAT ARE GREATER THEN 3' AND ADD ROCK BACK FILL OVER THE SANITARY UP TO THE STORM.

ALL CURB INLETS WILL HAVE A 3/8" TRASH BAR.
ALL STRUCTURES, INCLUDING PORCHES, SHALL BE BUILT BETWEEN THE 10' EASEMENT AND 15' SETBACK LINE AT A CONSISTENT SETBACK THROUGHOUT

STORM WATER DETENTION PROVIDED BY WINGHAVEN GLOBAL DETENTION PLAN.

ALL SEWERS SHALL HAVE A MINIMUM OF 36" COVER.

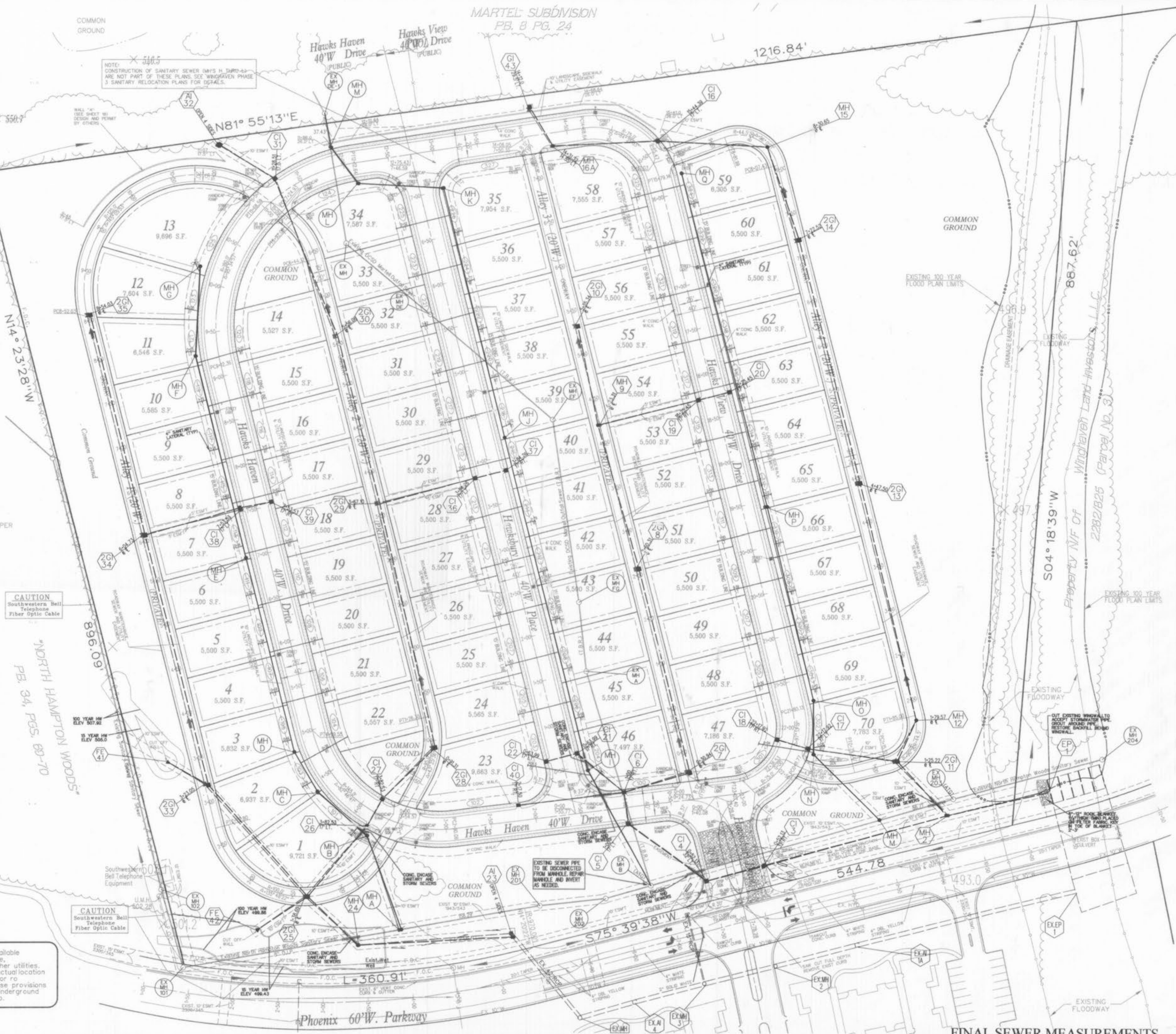
FEMA MAPS USED:
29183C0220E, 29183C0240E, 29183C0430E
DATED AUGUST 2, 1996

MONUMENTS AND SIGNS WILL BE APPROVED UNDER SEPARATE APPLICATIONS.

A 3/8" TRASH BAR WILL BE REQUIRED ON AREA INLETS

EXISTING TREE LINE WAS ESTABLISHED FROM GRADING COMPLETED PER A PREVIOUSLY APPROVED GRADING PLAN

NO ADDITIONAL TREE REMOVAL WILL BE REQUIRED.



CAUTION
Southwestern Bell
Telephone
Fiber Optic Cable

NORTH HAMPTON WOODS
PB. 34, PGS. 60-70



ROGER WALLEN
MO P.L.S. # 2185

The underground utilities shown herein were plotted from available information and do not necessarily reflect the actual existence, or nonexistence, size, type, number, or location of these or other utilities. The general contractor shall be responsible for verifying the actual location of all underground utilities in the field, shown or not shown, prior to any grading, excavation, or construction of improvements. These provisions shall in no way absolve any party from complying with the Underground Facility Safety and Damage Prevention Act, Chapter 319, RSMo.

FINAL SEWER MEASUREMENTS

Hawksbury Village App 4/24/14 RBC



WINGHAVEN

HAWKSURY VILLAGE



SANITARY SEWER PROFILES
AS-BUILT

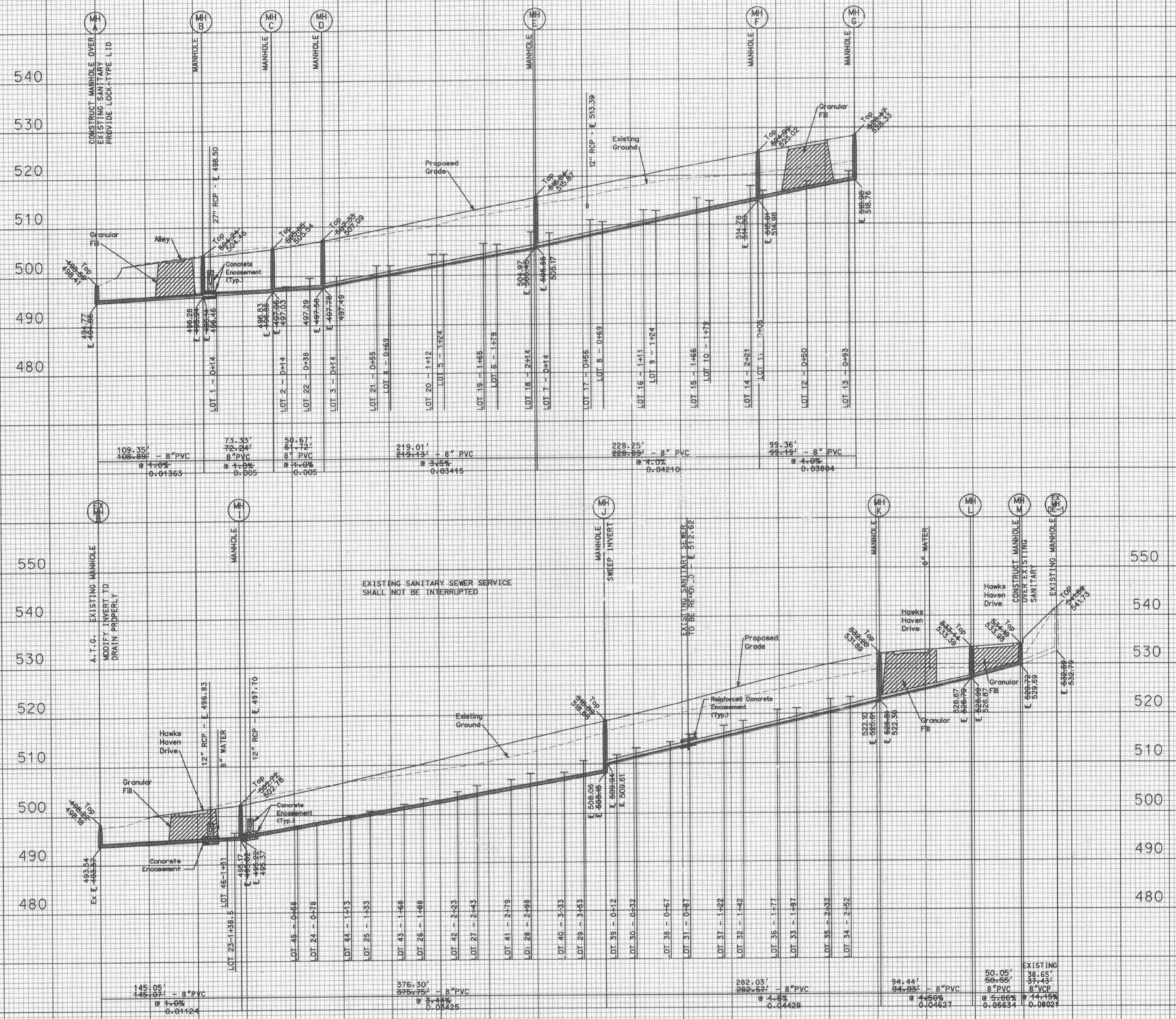
Design By: B.C.
Drawn By: B.D.B.
Checked By: R.A.

7/31

02-05-04

02

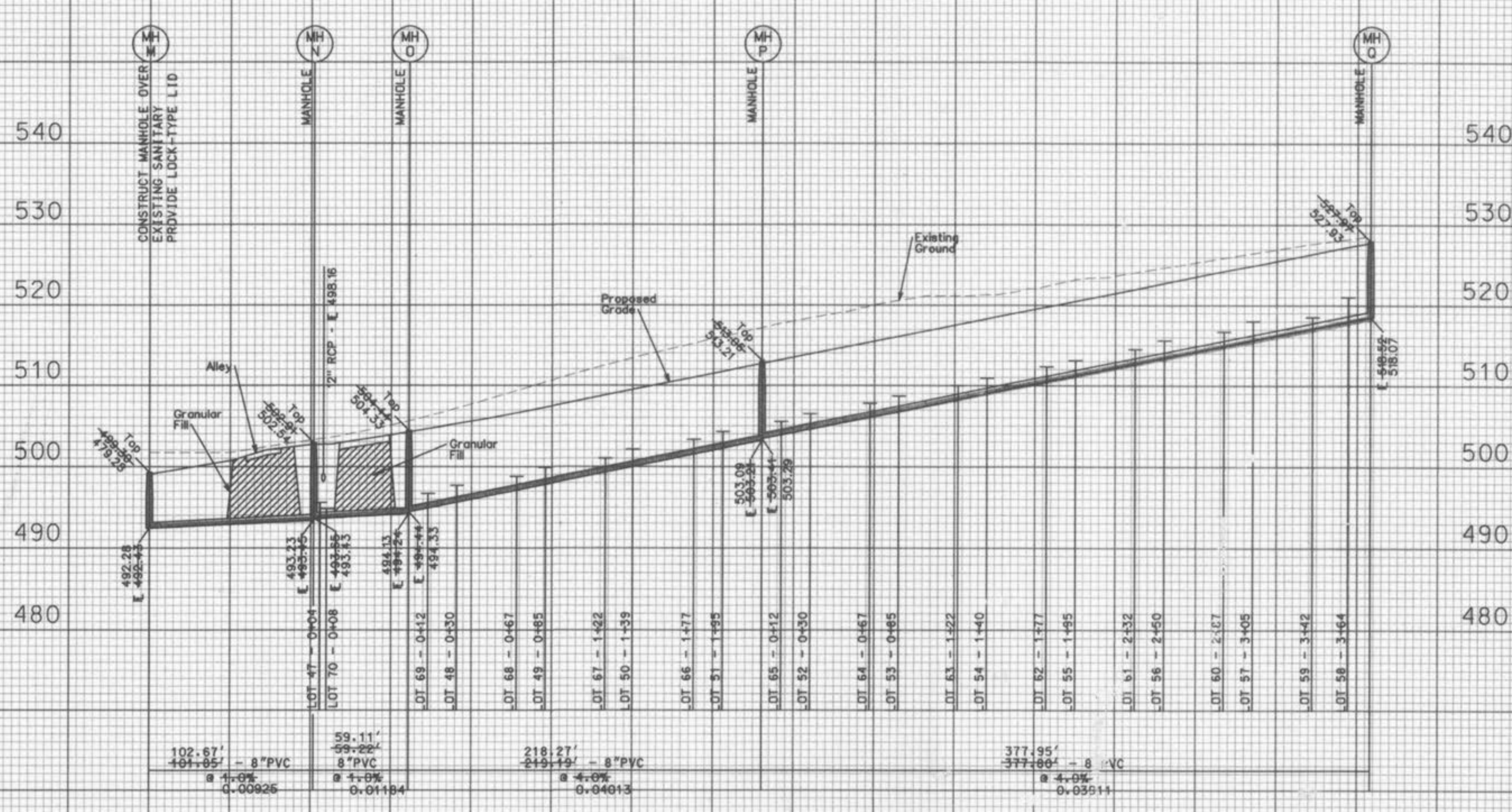
SCALE:
1" = 10' VERT.
1" = 50' HORIZ.



CONSTRUCTION OF MANHOLES B, I, J, K AND L ARE NOT PART OF THESE PLANS.
SEE WINGHAVEN PHASE 3 - HAWKSURY VILLAGE SANITARY SEWER RELOCATION PLANS

Roger G. Allen
ROGER G. ALLEN
MO P.L.S. # 2185

FINAL SEWER MEASUREMENTS



WINGHAVEN
RESIDENTIAL L.L.C.
#1 MICROSE & SON
CENTER DRIVE
ST. LOUIS, MISSOURI 63005
PHONE (636) 537-2000

VOLZ



WINGHAVEN

HAWKSBURY VILLAGE

Roger G. Allen
ROGER G. ALLEN
MO.P.L.S. # 2185

STATE OF MISSOURI
EX-2185
ROGER G. ALLEN
PROFESSIONAL LAND SURVEYOR

SANITARY SEWER PROFILES
AS-BUILT

Design By: B.G.
Drawn By: B.D.B.
Checked By: R.A.

7/01

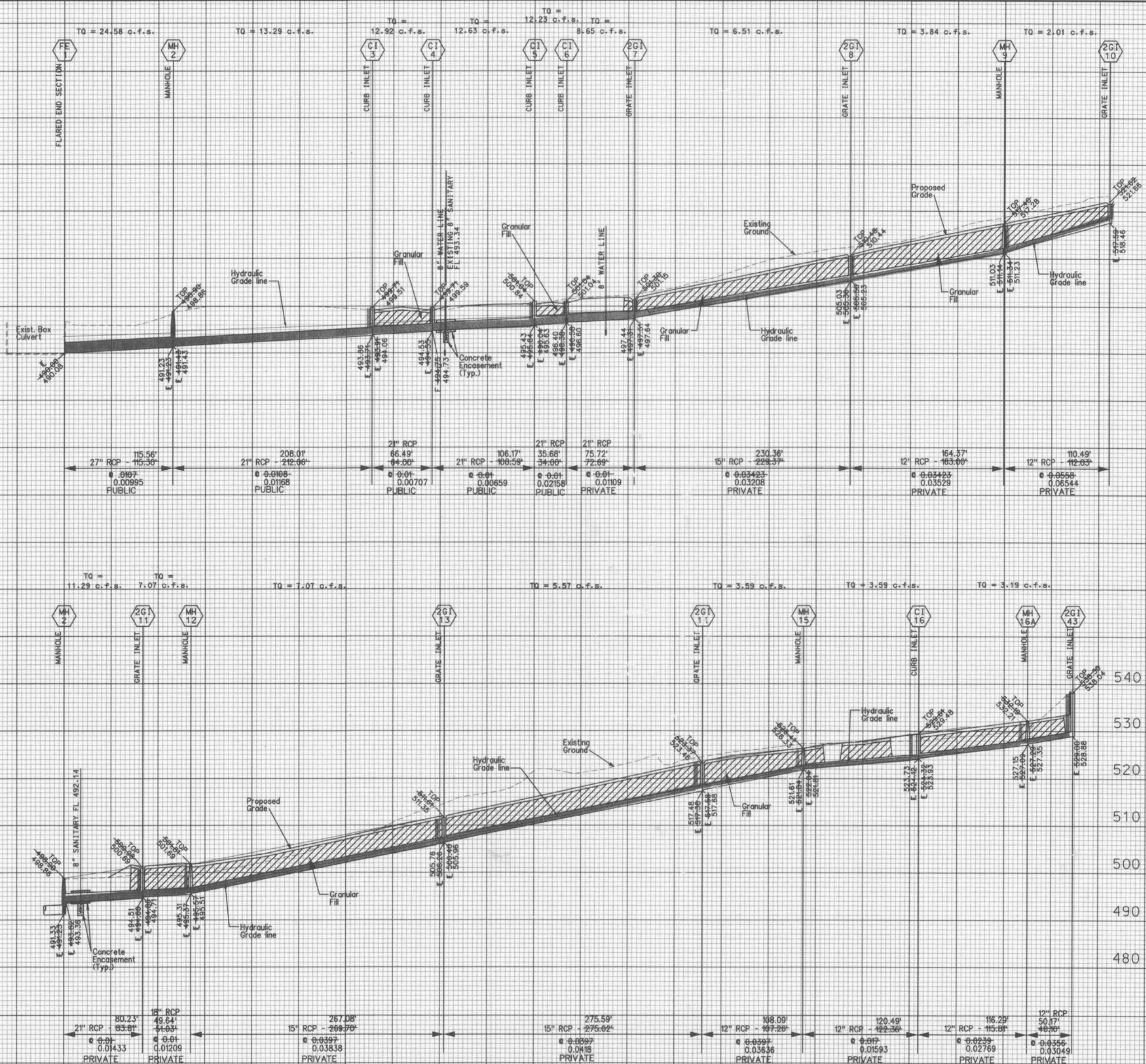
102-109-104
03

FINAL SEWER MEASUREMENTS

Hawksbury Village App #2014 ABK

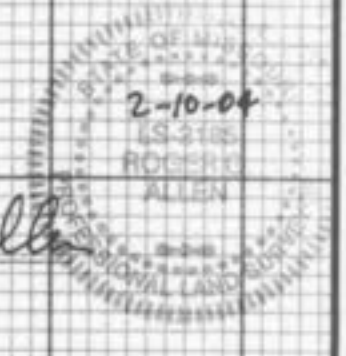
540
530
520
510
500
490
480

540
530
520
510
500
490
480



SCALE:
1" = 10' VERT.
1" = 50' HORIZ.

ROGER G. ALLEN
MO P.L.S. # 2185



FINAL SEWER MEASUREMENTS

WINGHAVEN RESIDENTIAL L.L.C.
#1 MCBROE & SON CENTER DRIVE
ST. LOUIS, MISSOURI 63005
PHONE (636) 637-2000

VOLZ

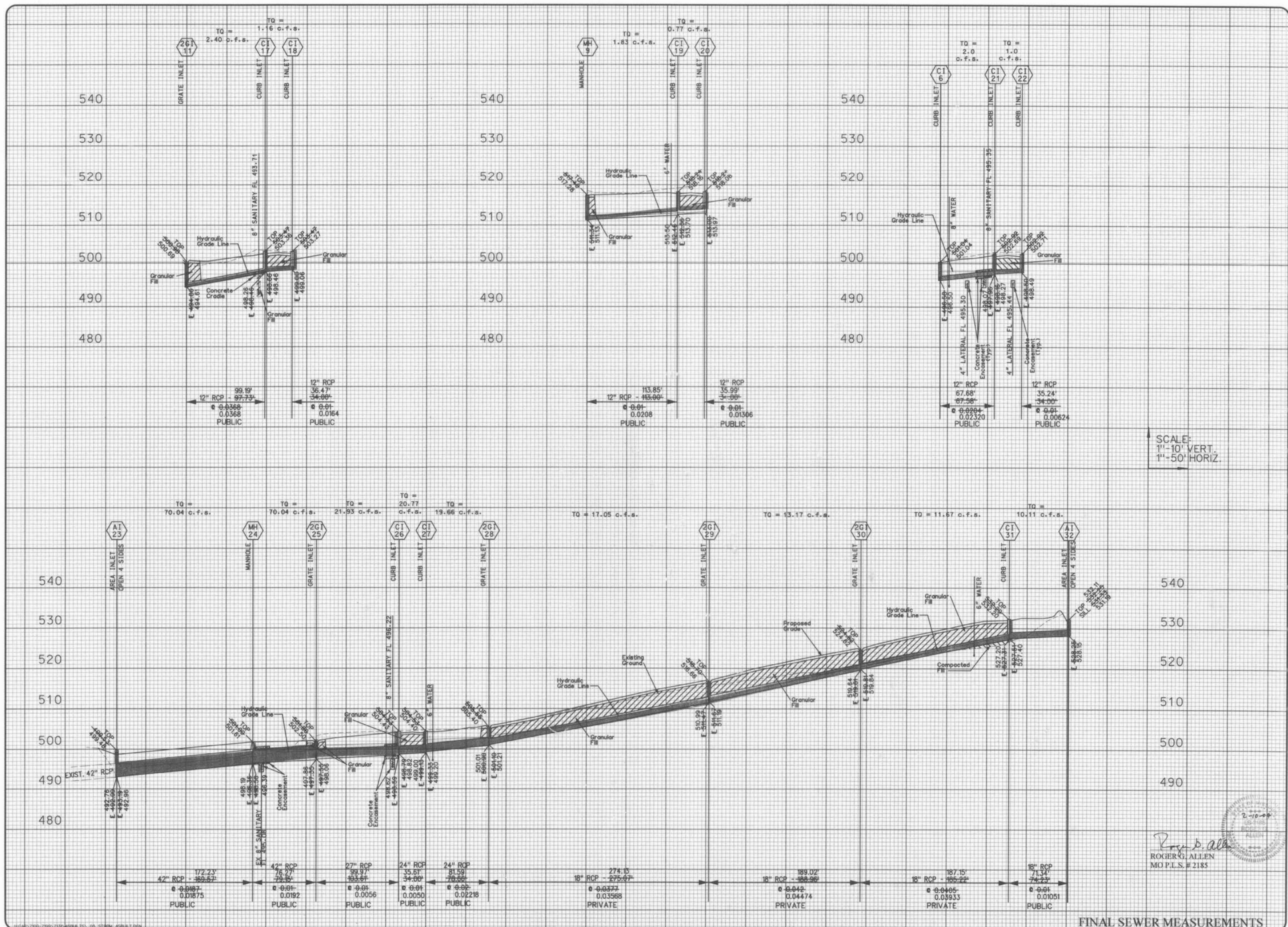
WINGHAVEN
HAWKSURRY VILLAGE

STORM SEWER PROFILES AS-BUILT

Design By: B.G.
Drawn By: B.D.B.
Checked By: R.A.

7/31

12-10-04
04



SCALE:
1" = 10' VERT.
1" = 50' HORIZ.

ROGER G. ALLEN
MO P.L.S. # 2185

WINGHAVEN
RESIDENTIAL L.L.C.
#1 WINGHAVEN & SON
CENTER DRIVE
ST. LOUIS, MISSOURI 63005
PHONE (636) 537-2000



WINGHAVEN

HAWKSURRY VILLAGE

STORM SEWER PROFILES
AS-BUILT

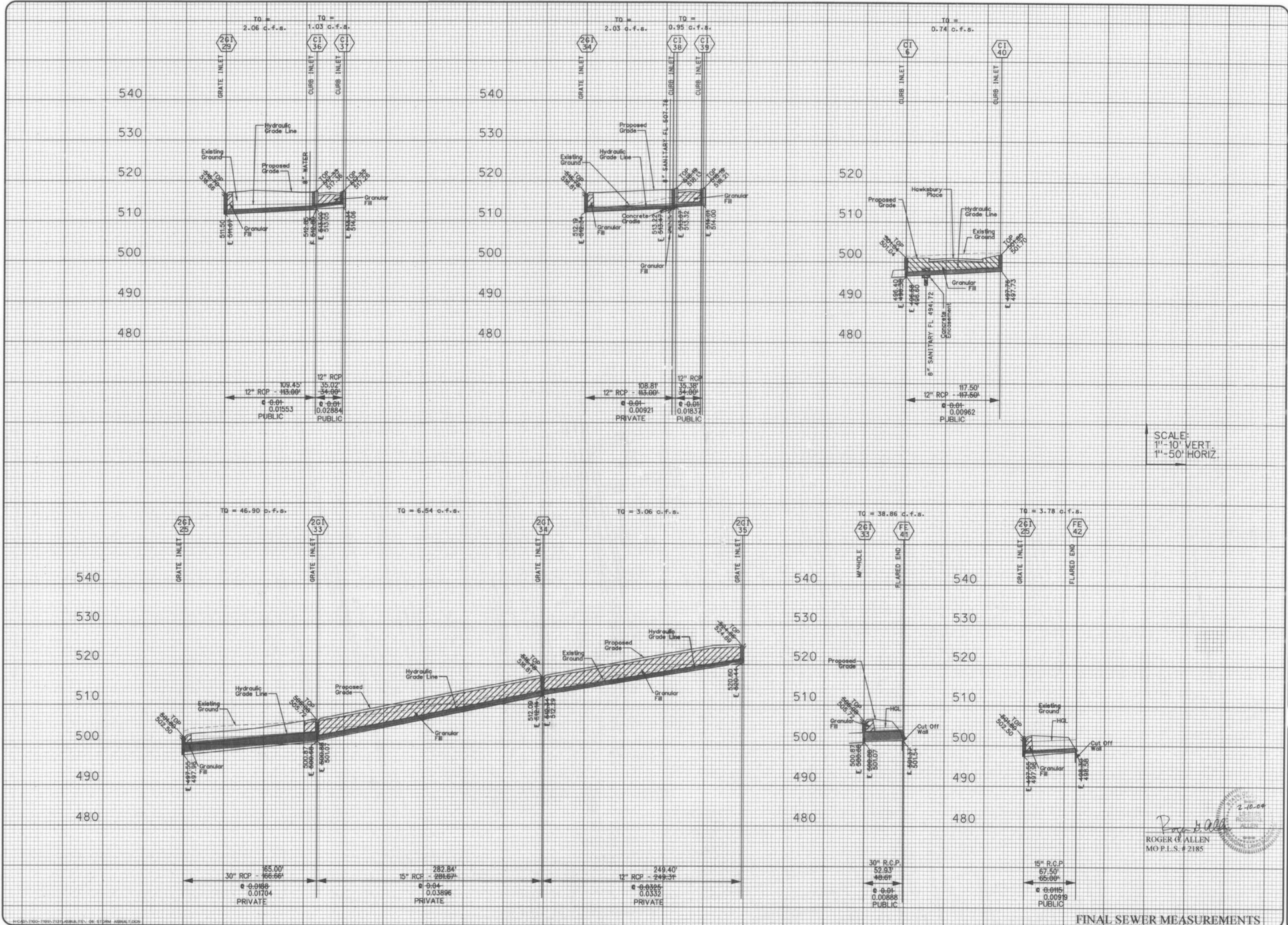
Design By: B.G.
Drawn By: B.D.B.
Checked By: R.A.

7/31

02-09-04
05

FINAL SEWER MEASUREMENTS

Hawksbury Village App 4/29/04



SCALE:
1" = 10' VERT.
1" = 50' HORIZ.

2.10.09

 ROGER C. ALLEN
 MO P.L.S. # 2185

FINAL SEWER MEASUREMENTS

WINGHAVEN
 RESIDENTIAL L.L.C.
 #1 MCBRIDE & SON
 CENTER DRIVE
 ST. LOUIS, MISSOURI 63005
 PHONE (636) 537-2000

VOLZ

WINGHAVEN

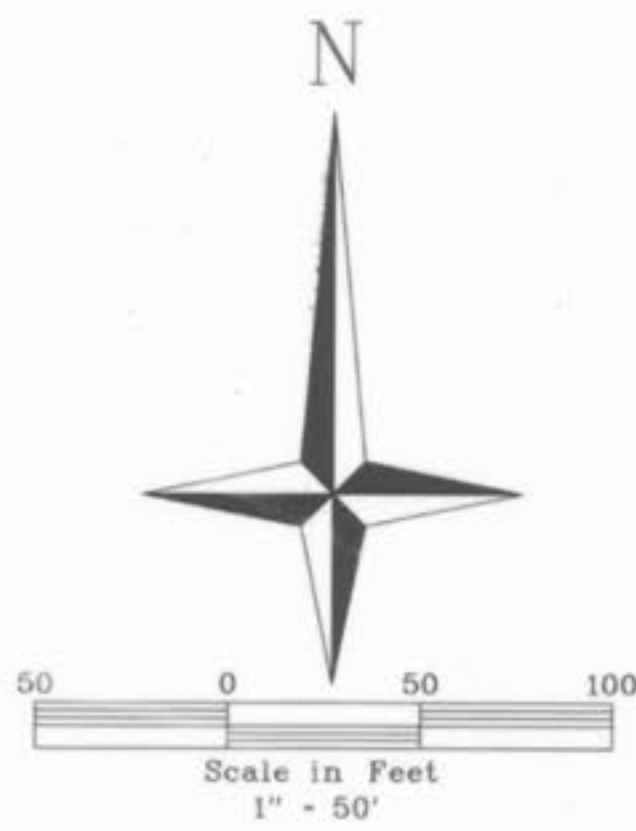
HAWKSBURY VILLAGE

STORM SEWER PROFILES
 AS-BUILT

Design By: B.O.
 Drawn By: B.D.O.
 Checked By: B.A.

7/31

02-119-114
 06



COMMON GROUND
CORRECTED PLAT OF MARTEL SUB'D
PB. 8 PG. 24

MARTEL SUBDIVISION
PB. 8 PG. 24

Hawks Haven
40'W Drive
(PUBLIC)

Hawks View
40'W Drive
(PUBLIC)

1216.84'



CAUTION
Southwestern Bell
Telephone
Fiber Optic Cable

NORTH HAMPTON WOODS
PB. 34, PGS. 69-70

CAUTION
Southwestern Bell
Telephone
Fiber Optic Cable

Roger G. Allen
ROGER G. ALLEN
MO P.L.S. # 2185



The underground utilities shown herein were plotted from available information and do not necessarily reflect the actual existence, or nonexistence, size, type, number, or location of these or other utilities. The general contractor shall be responsible for verifying the actual location of all underground utilities in the field, shown or not shown, prior to any grading, excavation, or construction of improvements. These provisions shall in no way absolve any party from complying with the Underground Facility Safety and Damage Prevention Act, Chapter 319, RSMo.

WINGHAVEN
RESIDENTIAL L.L.C.
HUBBARD & SON
CONCRETE
ST. LOUIS, MISSOURI
PHONE (636) 537-2000



WINGHAVEN
HAWKSURRY VILLAGE

WATER PLAN
AS-BUILT

Design By: B.C.
Drawn By: B.D.B.
Checked By: R.A.
7/31

FINAL MEASUREMENTS