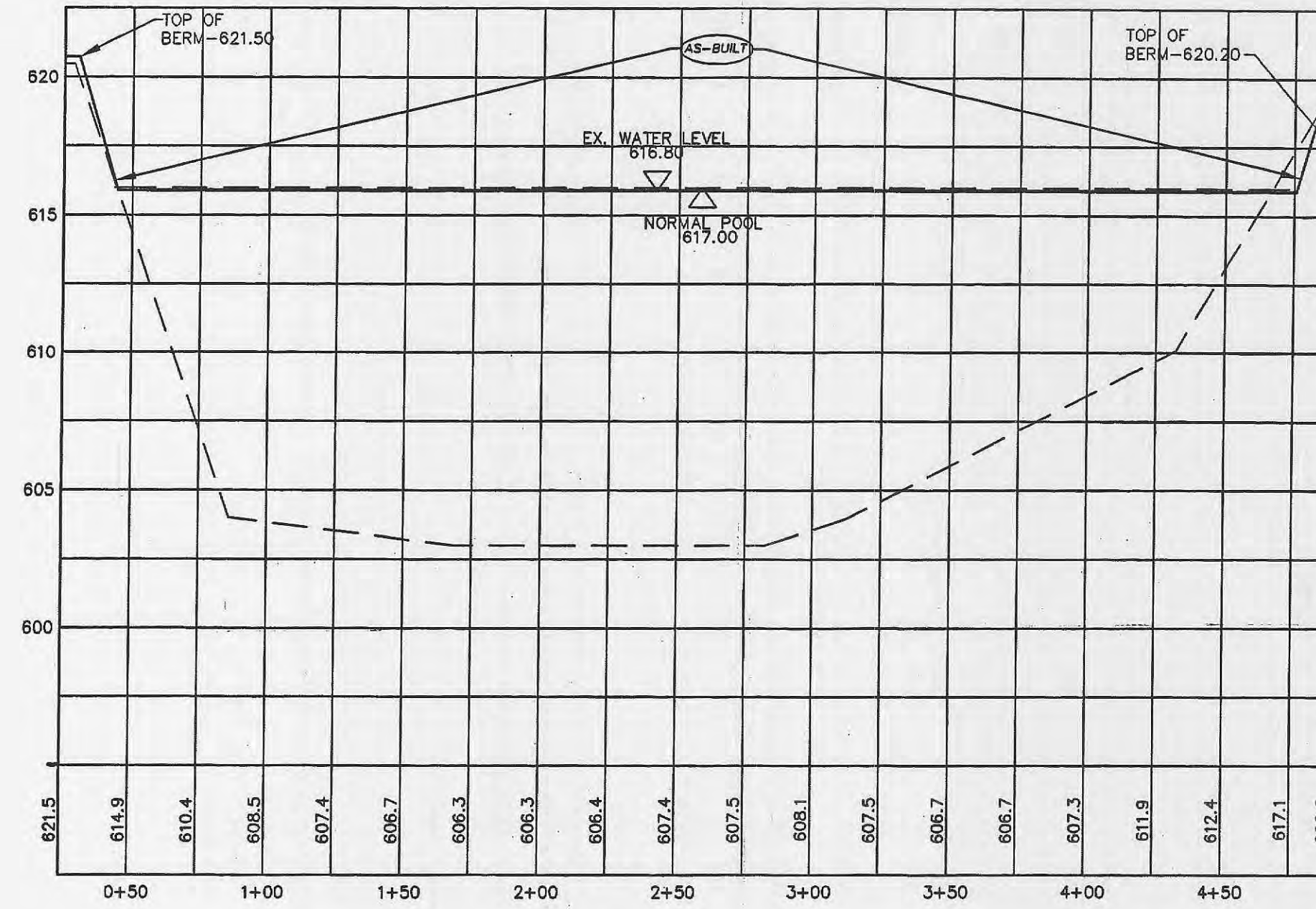
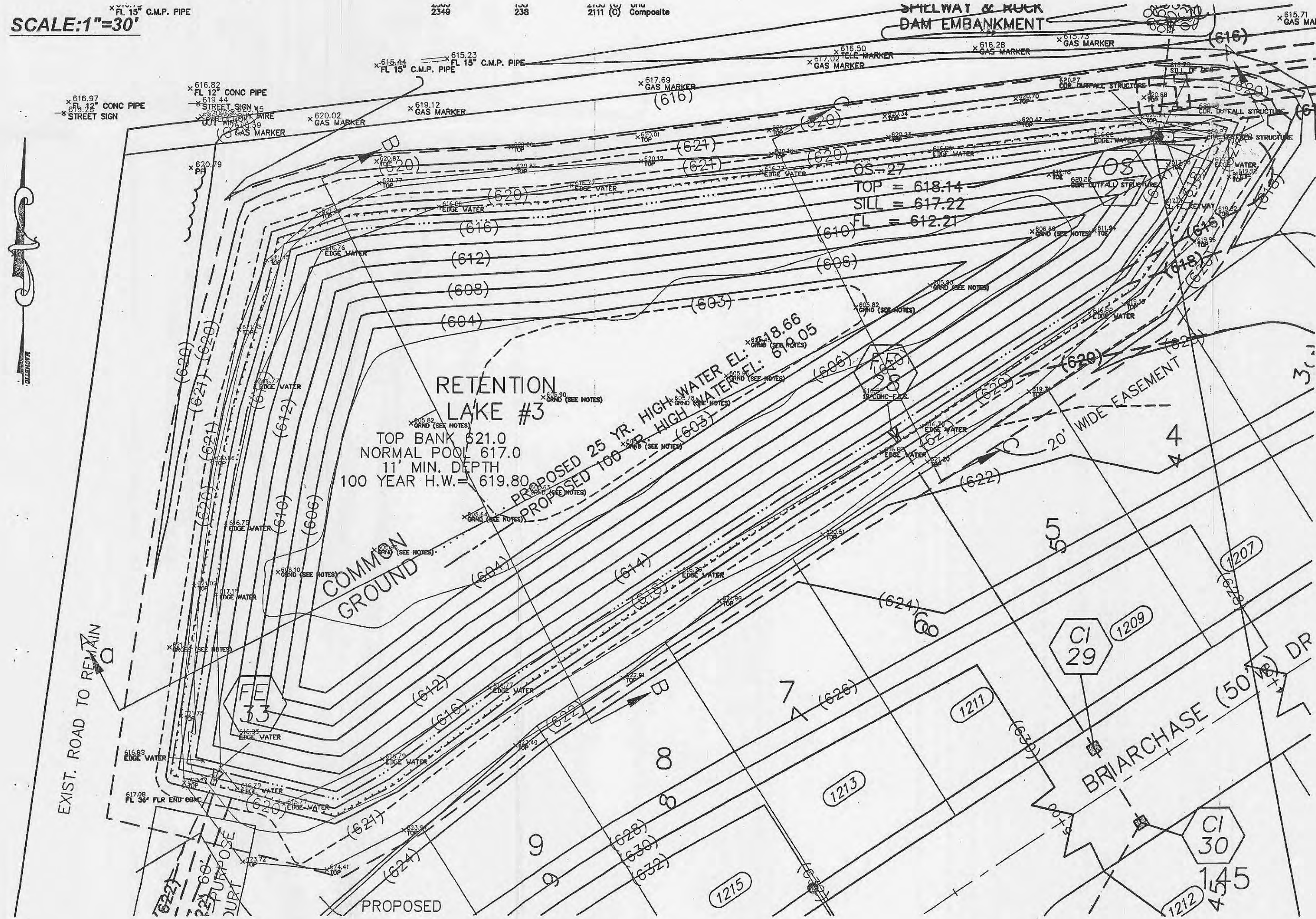
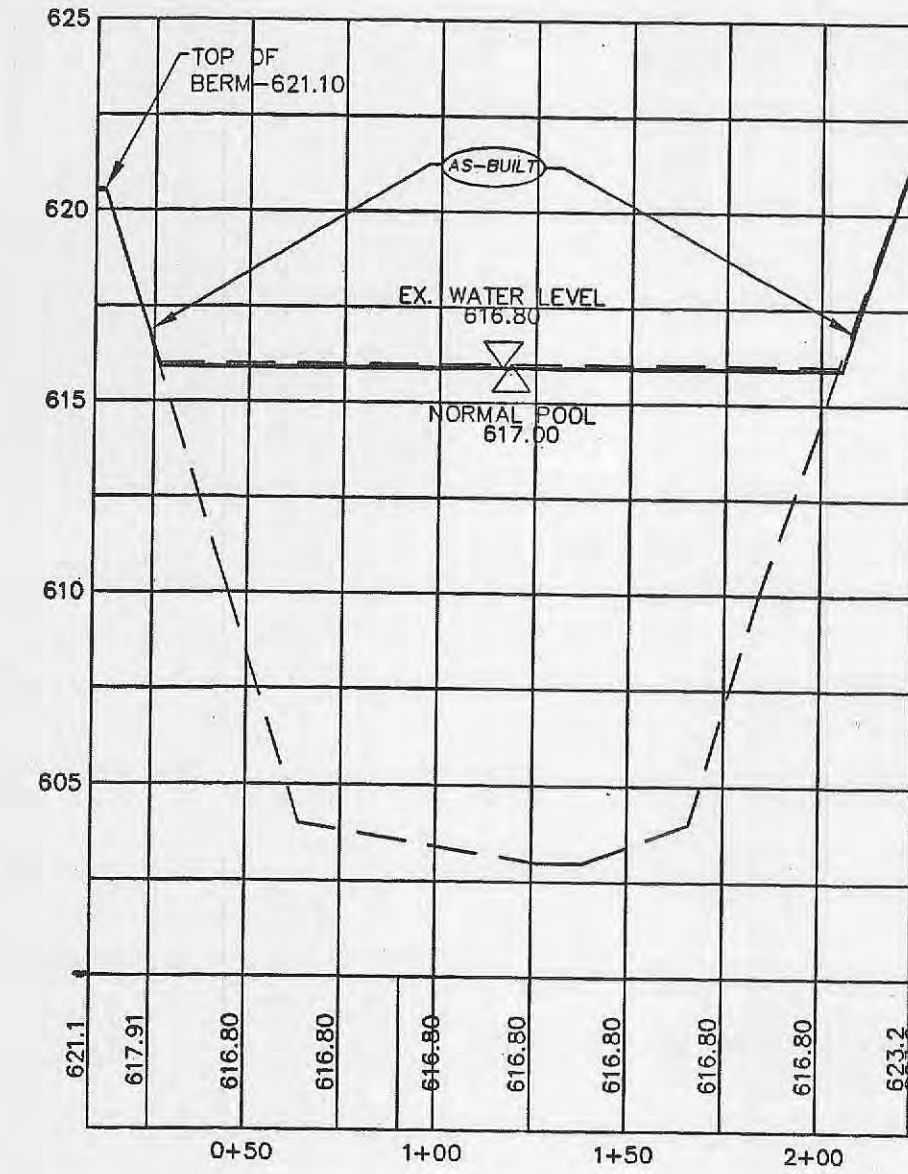


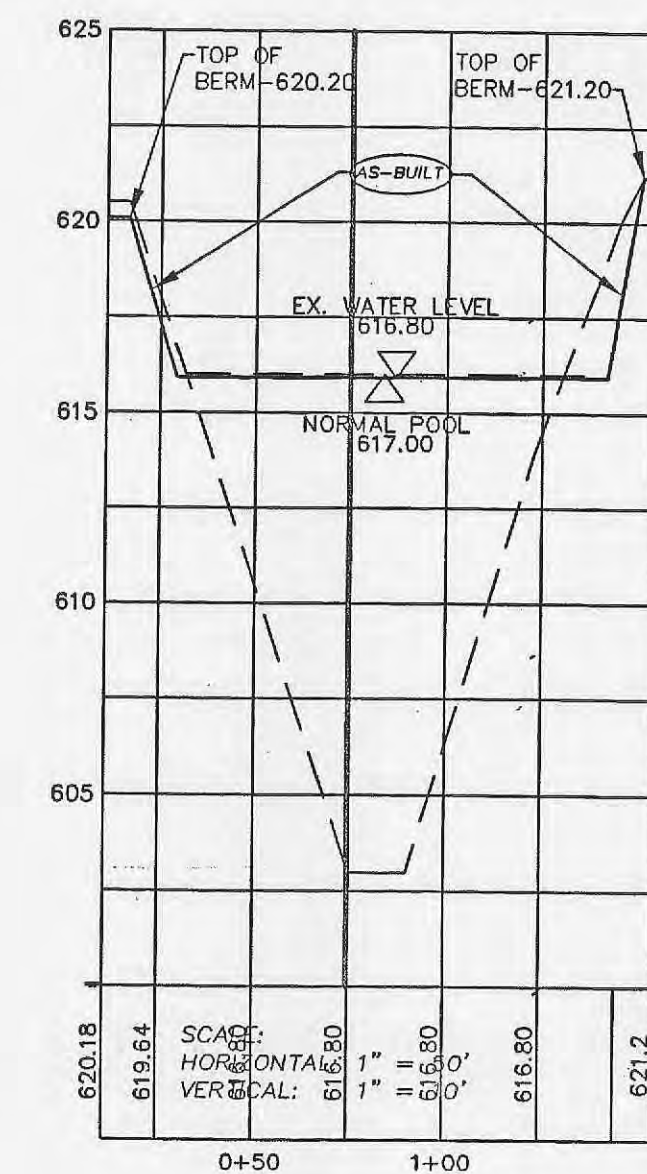
SCALE: 1"=30'



RETENTION LAKE #3
 CROSS SECTION A-A



RETENTION LAKE #3
 CROSS SECTION B-B

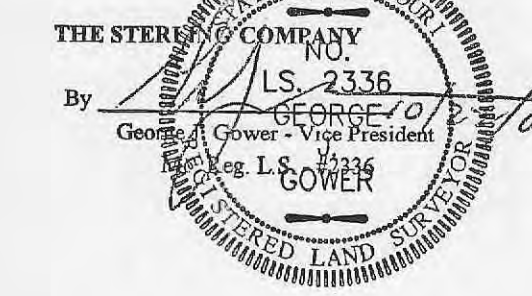


RETENTION LAKE #3
 CROSS SECTION C-C

AS-BUILT
 SANITARY AND STORM SEWER
 FINAL MEASUREMENT PLAT

As of _____, I certify that the actual sewer lengths, sizes, flowlines, depths of structures and locations with respect to existing or proposed easements have been measured, the results of those measurements are shown on this set of Final Measurement Plans. Since the wye locations have been plotted from information provided by the sewer contractor or other sources, I disclaim any responsibility for that specific information.

All public sewers are located within the designated existing or proposed easements except as follows:



○ = AS-BUILT

THE UNDERGROUND UTILITIES SHOWN HEREON WERE PLOTTED FROM AVAILABLE INFORMATION AND DO NOT NECESSARILY REFLECT THE ACTUAL EXISTENCE, NONEXISTENCE, SIZE, TYPE, NUMBER OR LOCATION OF THESE OR OTHER UTILITIES. THE GENERAL CONTRACTOR SHALL BE RESPONSIBLE FOR VERIFYING THE ACTUAL LOCATION OF ALL UNDERGROUND UTILITIES, SHOWN OR NOT SHOWN, AND SAID UTILITIES SHALL BE LOCATED IN THE FIELD PRIOR TO ANY GRADING, EXCAVATION OR CONSTRUCTION OF IMPROVEMENTS. THESE PROVISIONS SHALL IN NO WAY ABSOLVE ANY PARTY FROM COMPLYING WITH THE UNDERGROUND FACILITY SAFETY, AND DAMAGE PREVENTION ACT, CHAPTER 319, RSMo

ISSUE	REMARKS/DATE

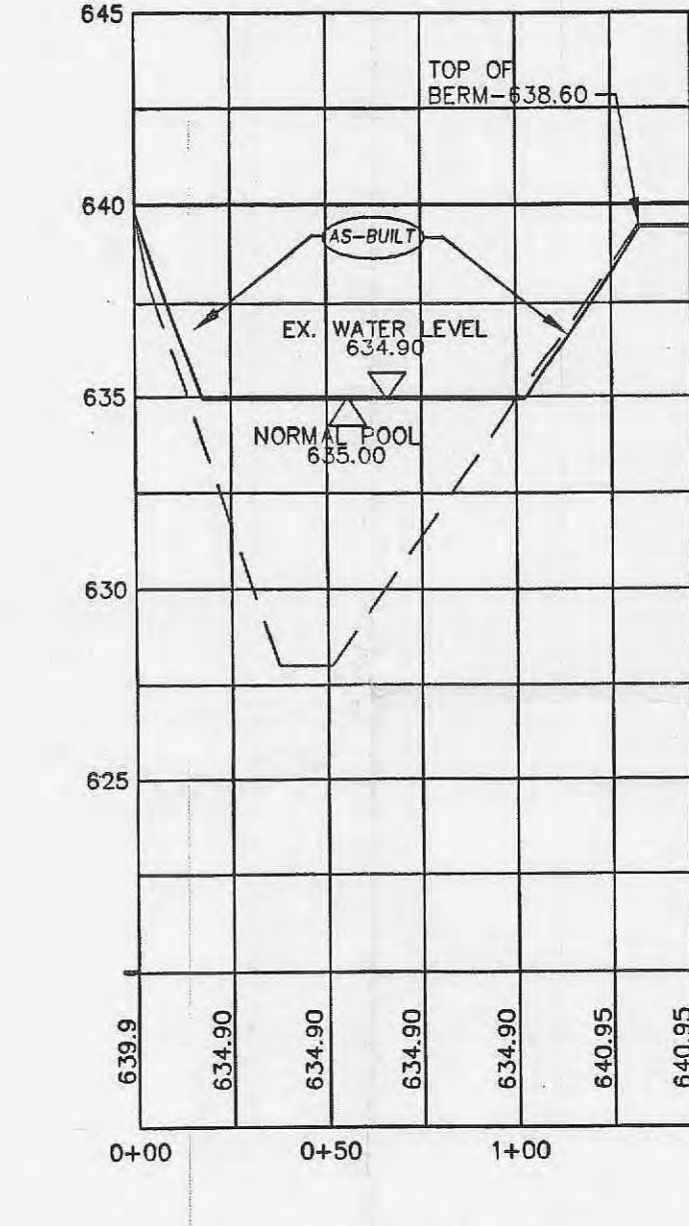
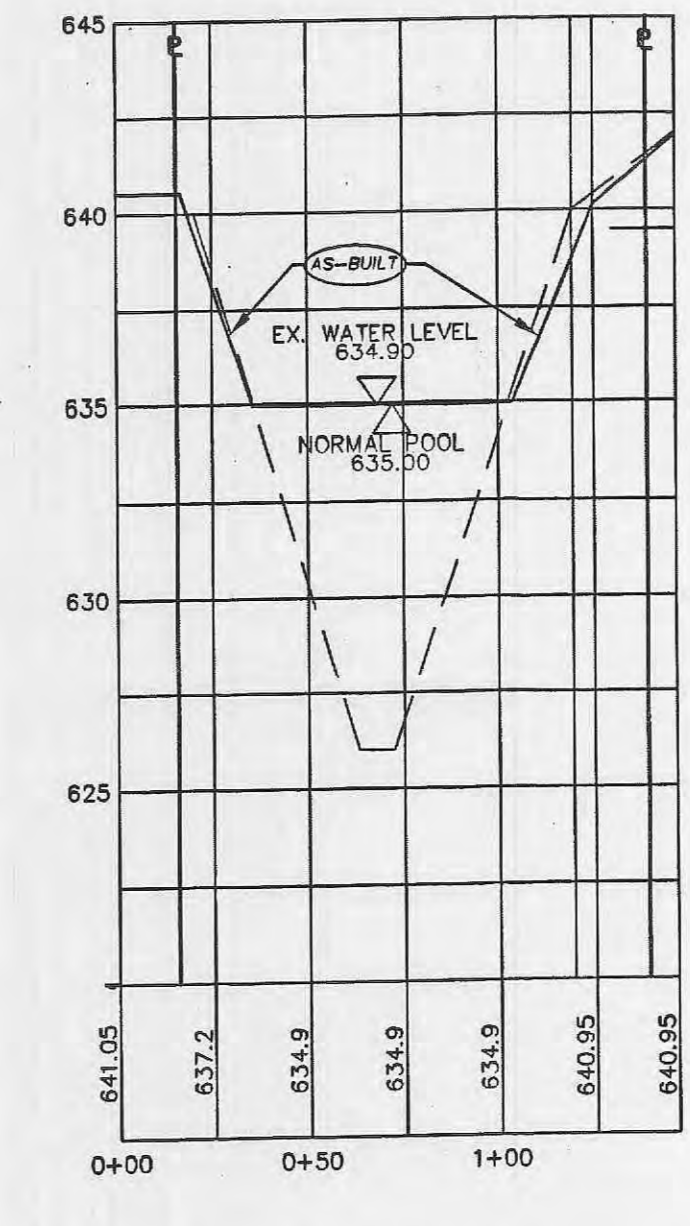
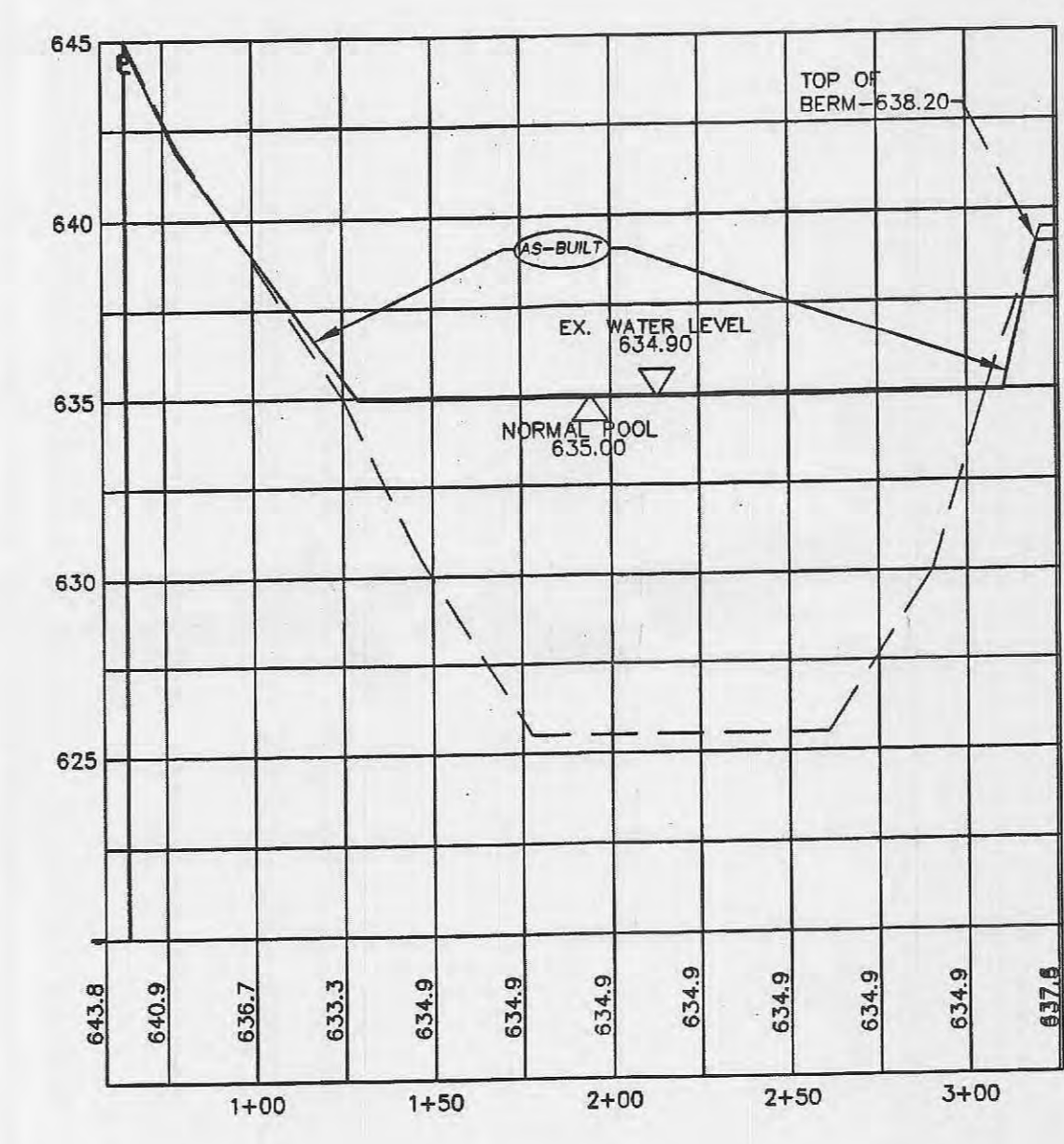
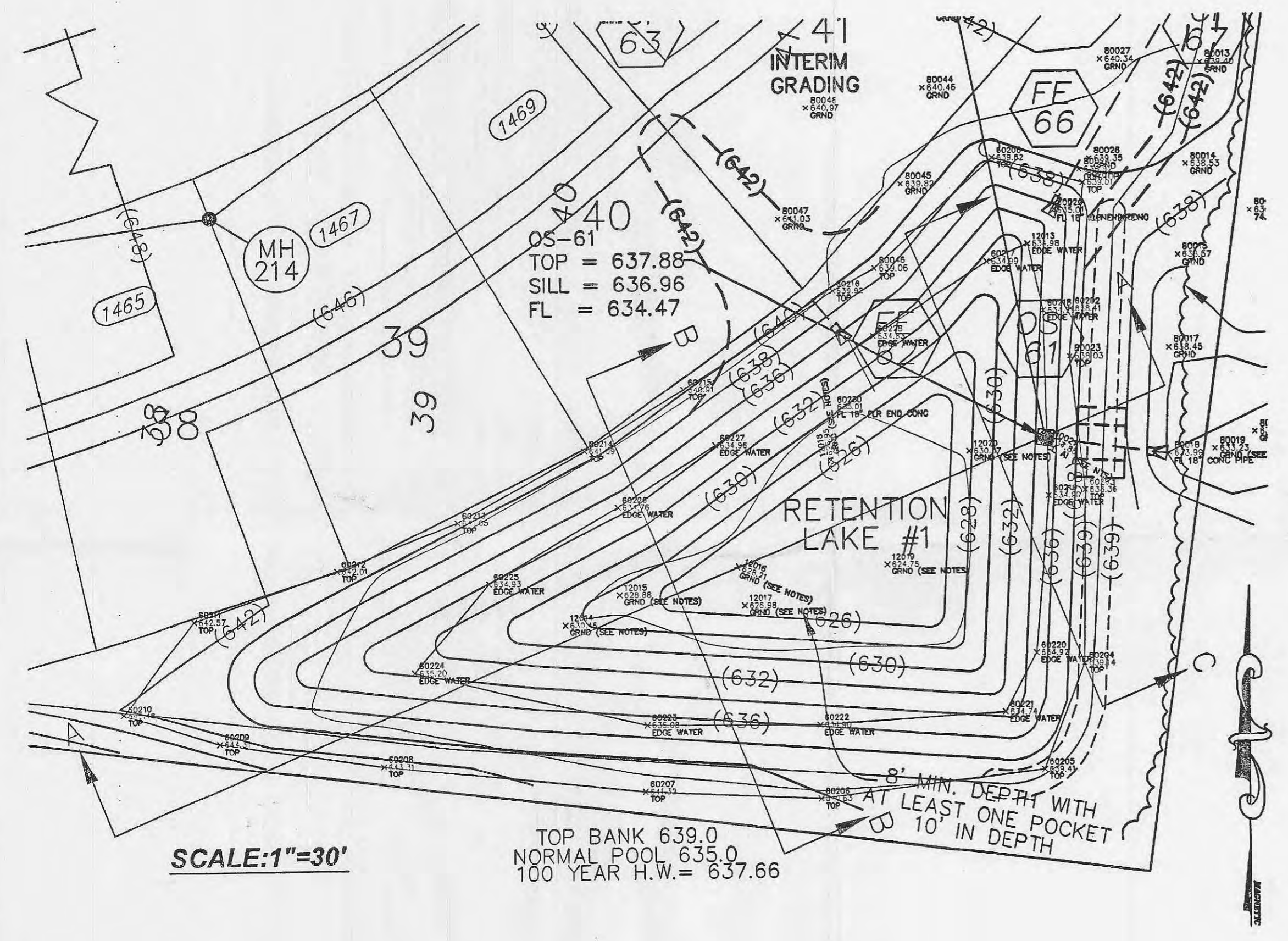
PREPARED FOR:
McBride & Son Homes, Inc.
 #1 McBride & Son Center Drive
 CHESTERFIELD, MISSOURI 63005
 (314) 537-2000

PREPARED BY:
THE STERLING CO.
 ENGINEERS & SURVEYORS
 5055 NEW BAYMARTIN ROAD
 ST. LOUIS, MISSOURI 63129
 (314) 437-0440 FAX 437-6844
 E-mail: Sterling@sterling-eng-sur.com

DRAWN:	DESIGNED:	CHECKED:
PROJECT:	BRIARCHASE	
	RETENTION LAKES #1 & #3	
NO.	02	03
M.S.D.		
P#		
DIGITAL FILE LOCATION	SERVER-STERLING-2	
DATE	2007.08.06 10:00 AM	

Drawing name: C:\2007\08\03\814 Highway\Plan\Draw\Sub\Draw\Draw.mxd
 Plotted on: Dec 29, 2007 - 10:45am
 Plotted by: dphdler

Drawing name: C:\33050\01\3305013 Highway (Plan)\broad\sub\1465\1465.dwg, Plotted on: Nov 10, 2007 - 8:04am, Plotted by: agfiker



SCALE:
HORIZONTAL: 1" = 50'
VERTICAL: 1" = 10'

**AS-BUILT
SANITARY AND STORM SEWER
FINAL MEASUREMENT PLAT**

As of _____, I certify that the actual sewer lengths, sizes, flowlines, depths of structures and locations with respect to existing or proposed easements have been measured. The results of those measurements are shown on this set of Final Measurement Plans. Since the wye locations have been plotted from information provided by the sewer contractor or other sources, I disclaim any responsibility for that specific information.

All public sewers are located within the designated existing or proposed easements except as follows:

By: *[Signature]*
George J. Cower, Vice President
The Sterling Company
Professional Engineer No. 2336
Missouri State Board of Professional Engineers and Surveyors

CITY OF O'FALLON
COMMUNITY DEVELOPMENT DEPARTMENT
ACCEPTED FOR CONSTRUCTION
DATE: 11/15/07
PROFESSIONAL ENGINEER'S SEAL
INDICATES RESPONSIBILITY FOR DESIGN

THE UNDERGROUND UTILITIES SHOWN HEREON WERE PLOTTED FROM AVAILABLE INFORMATION AND DO NOT NECESSARILY REFLECT THE ACTUAL EXISTENCE, NONEXISTENCE, SIZE, TYPE, NUMBER OR LOCATION OF THESE OR OTHER UTILITIES. THE GENERAL CONTRACTOR SHALL BE RESPONSIBLE FOR VERIFYING THE ACTUAL LOCATION OF ALL UNDERGROUND UTILITIES, SHOWN OR NOT SHOWN, AND SAID UTILITIES SHALL BE LOCATED IN THE FIELD PRIOR TO ANY GRADING, EXCAVATION OR CONSTRUCTION OF IMPROVEMENTS. THESE PROVISIONS SHALL IN NO WAY ABSOLVE ANY PARTY FROM COMPLYING WITH THE UNDERGROUND FACILITY SAFETY AND DAMAGE PREVENTION ACT, CHAPTER 319, RSMo.

○ = AS-BUILT

NOV 15 2007
RECEIVED

ISSUE REMARKS DATE

PREPARED FOR:
McBride & Son Homes, Inc.
#1 McBride & Son Center Drive
CHESTERFIELD, MISSOURI 63005
(314) 537-2000

PREPARED BY:
THE STERLING CO.
ENGINEERS & SURVEYORS
5055 NEW BAUMGARTNER ROAD
ST. LOUIS, MISSOURI 63129
(314) 487-0440 FAX 487-8944
E-Mail: Sterling@sterling-eng-sur.com

DRAWN: DESIGNED: CHECKED:

PROJECT:
BRIARCHASE
RETENTION LAKES #1 & #3

NO. 02 03 043
M.S.D. SHEET
P#

DIGITAL FILE LOCATION: C:\33050\01\3305013 Highway (Plan)\broad\sub\1465\1465.dwg