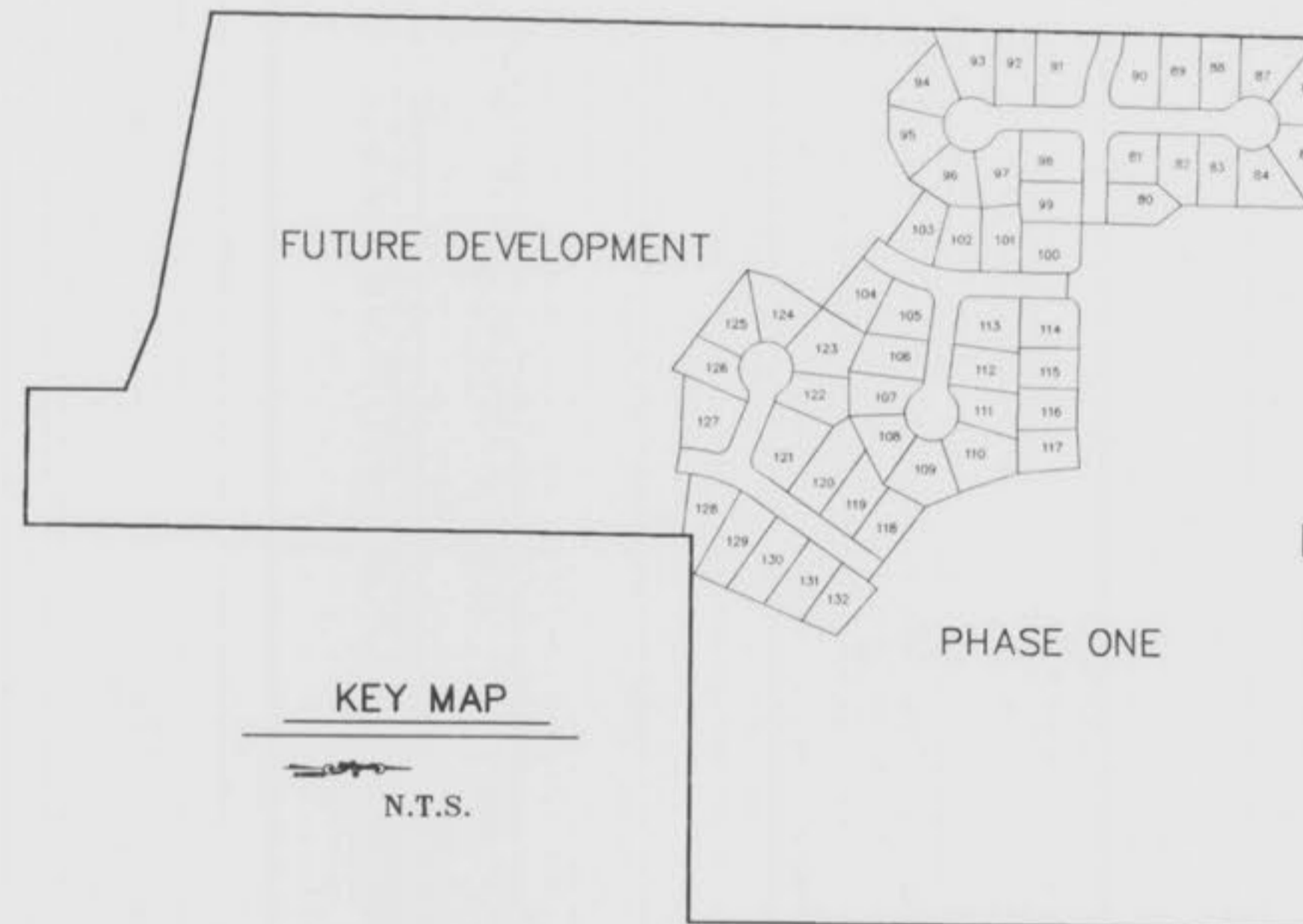
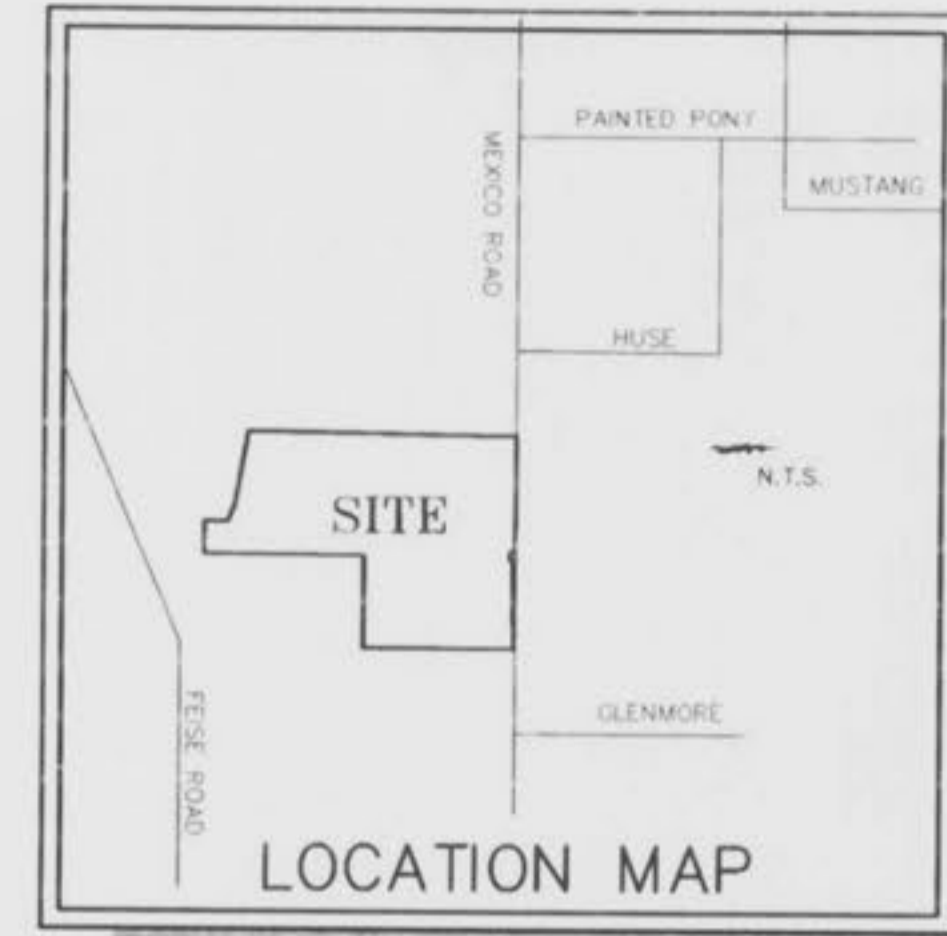


SANITARY AND STORM SEWER AS-BUILTS FOR BRIGHTON POINT PHASE TWO

A TRACT OF LAND BEING PART OF
SECTION 31 AND 32, TOWNSHIP 47 NORTH, RANGE 3 EAST
ST. CHARLES COUNTY, MISSOURI



THIS IS TO CERTIFY THAT WE HAVE DURING THE MONTH OF DECEMBER, 1998, BY ORDER OF TOM JOHNSON CONSTRUCTION EXECUTED AN AS-BUILT SURVEY OF THE SANITARY AND STORM SEWERS, FOR "BRIGHTON POINT PLAT TWO" A SUBDIVISION ACCORDING TO THE PLAT THEREOF RECORDED IN PLAT BOOK 35 PAGES 186 AND 187 OF THE ST. CHARLES COUNTY RECORDS. THE SANITARY LATERALS IF ANY WERE TAKEN FROM INFORMATION SUPPLIED TO BAX ENGINEERING BY THE CONTRACTOR, THEREFORE THEIR LOCATION IS ASSUMED APPROXIMATE. ALL SEWERS SHOWN LIE WITHIN THE EASEMENTS AS SHOWN ON SAID SUBDIVISION PLAT UNLESS OTHERWISE NOTED. THE RESULTS OF THIS AS-BUILT SURVEY ARE SHOWN ON THIS PLAT TO THE BEST OF MY KNOWLEDGE AND BELIEF. LATERALS CONSTRUCTED PER PLAN PER CONTRACTOR.

BAX ENGINEERING CO., INC.
 DARREL R. OAKLEY
 MO REG. L.S. #2265

LEGEND

C.I.	CURB INLET	—+—	STORM SEWER
D.C.I.	DOUBLE CURB INLET	—○—	SANITARY SEWER
A.I.	AREA INLET	—S—	EXISTING CONTOUR
M.H.	MANHOLE	—S2—	PROPOSED CONTOUR
F.E.	FLARED END SECTION	S ₄ S	STREET SIGN
E.P.	END PIPE	—	NO PARKING SIGN
C.P.	CONCRETE PIPE	—	WATER VALVE
R.C.P.	REINFORCED CONCRETE PIPE	—	BLOW OFF ASSEMBLY
C.M.P.	CORRUGATED METAL PIPE	—	FLOWLINE ELEVATION OF HOUSE CONNECTION
C.I.P.	CAST IRON PIPE	—	FLOWLINE ELEVATION OF SEWER MAIN
P.V.C.	POLY. VINYL CHLORIDE (PLASTIC)	—	
C.O.	CLEAN OUT	—	
SL	STREET LIGHT	—	
⊠	FIRE HYDRANT	—	

SHEET INDEX

1	COVER SHEET
2 - 3	SITE PLAN
4 - 5	SANITARY SEWER AS-BUILTS
6	STORM SEWER AS-BUILTS

PREPARED FOR: TOM JOHNSON CONSTRUCTION
 413 KATY LANE
 ST. CHARLES, MO. 63303
 (314) 9928-6420

DISCLAIMER OF RESPONSIBILITY
 I hereby certify that the documents attached to be authorized by my seal are limited to the sheet, and I hereby accept my responsibility for all other drawings, specifications, estimates, reports or other documents or instruments relating to or intended to be used for any part or parts of the architectural or engineering project or survey.

Copyright 1994
 Bax Engineering Company, Inc.
 All Rights Reserved

REVISIONS

NO.	DESCRIPTION	DATE

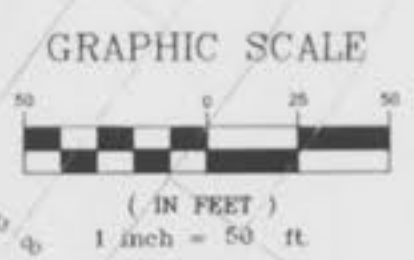


ENGINEERING
 PLANNING
 SURVEYING

1052 South Cloverleaf Drive
 St. Peters, MO. 63376-6445
 314-928-5552
 FAX 928-1718

12-14-98
 DATE
 96-8160A
 PROJECT NUMBER
 1 of 6
 SHEET OF
 8160ASB2.DWG
 FILE NAME
 DCF DRO
 DRAWN CHECKED

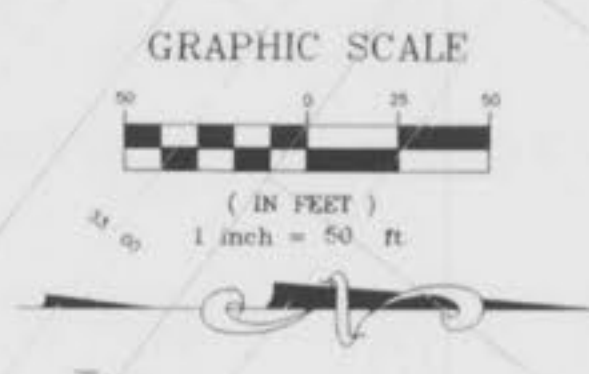
Brighton Point Phase 2 As-Builts



MEXICO ROAD EXTENSION

BRIGHTON POINT
 PLAT ONE

\\BBA\p-dp-1\p\dms\0000\PLUS\9594392.dwg Thu Dec 10 12:55:39 1998 00'



\\bax10-cv1\ve\dwg\BDDPP\US\8150\ASB2.dwg Mon Dec 14 12:06:14 1998 00'

FINAL SURVEY PLOTTED TEMPLATE ANNAI CHECKED

ORIGINAL SURVEY PLOTTED TEMPLATE ANNAI CHECKED

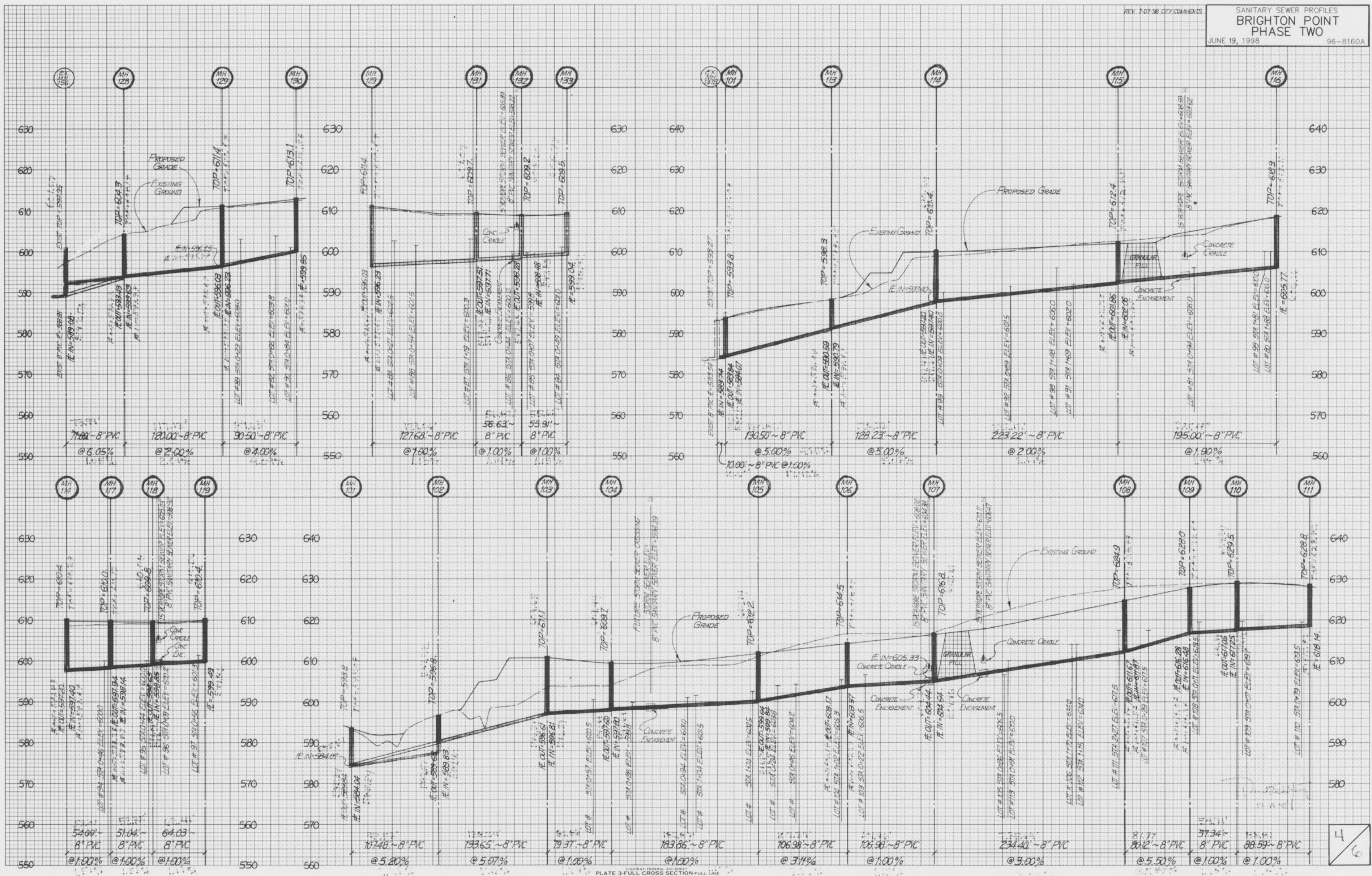
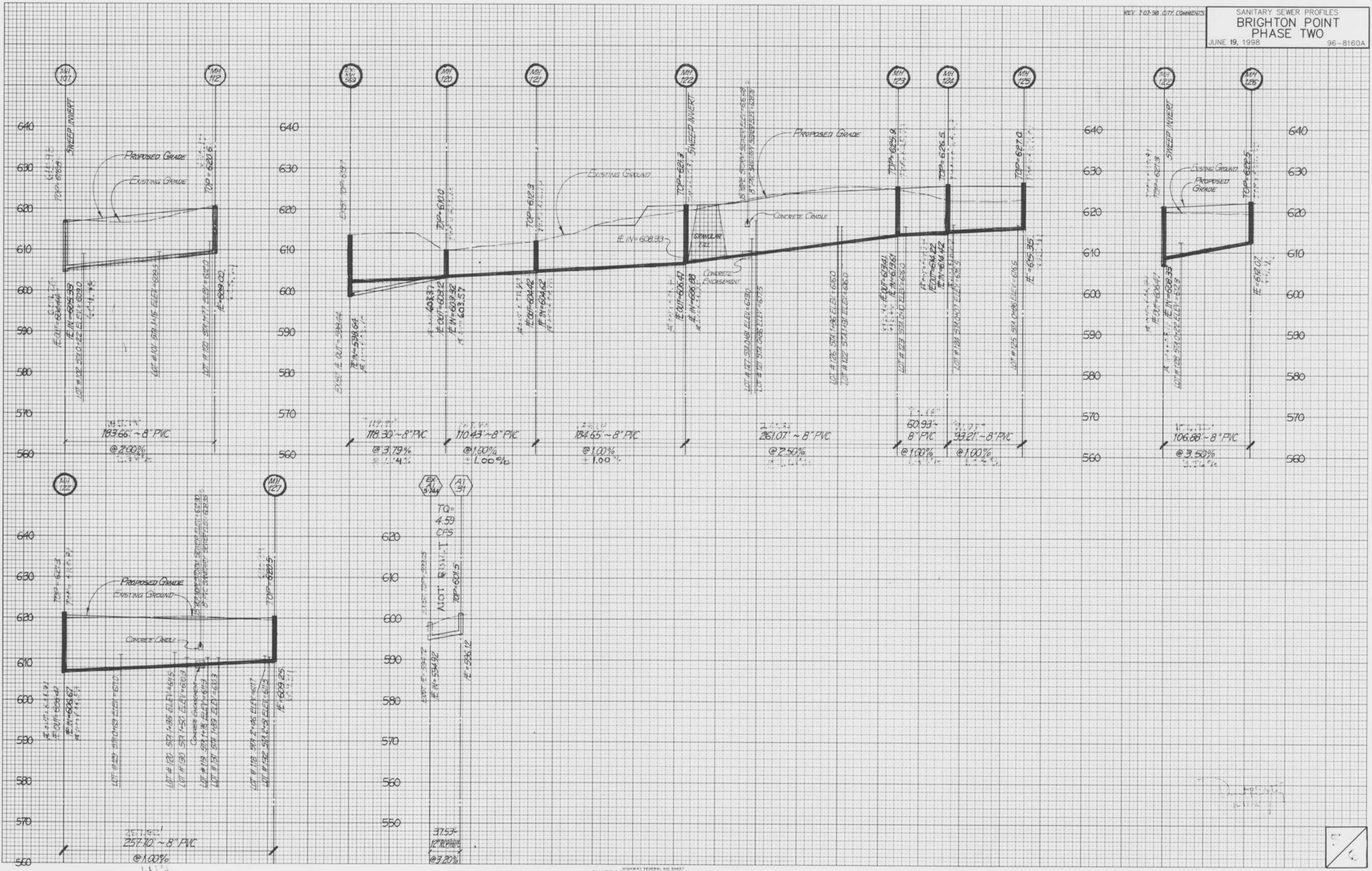


PLATE 3-FULL CROSS SECTION FULL LINE

4/6

DATE: _____ BY: _____
FINAL SURVEY SURVEYED PLOTTED
NOTE BOOK NO. _____ AREA CHECKED

DATE: _____ BY: _____
ORIGINAL SURVEY SURVEYED PLOTTED
NOTE BOOK NO. _____ AREA CHECKED



NOTE: CONCRETE CRADLES SHOWN AT CROSSINGS ARE FOR RCP ONLY.
 IF HDPE PIPE IS USED, CONCRETE ENCASMENT IS REQUIRED.

FINAL SURVEY PLOTTED NOTE BOOK NO. AREAS CHECKED

ORIGINAL SURVEY PLOTTED NOTE BOOK NO. AREAS CHECKED

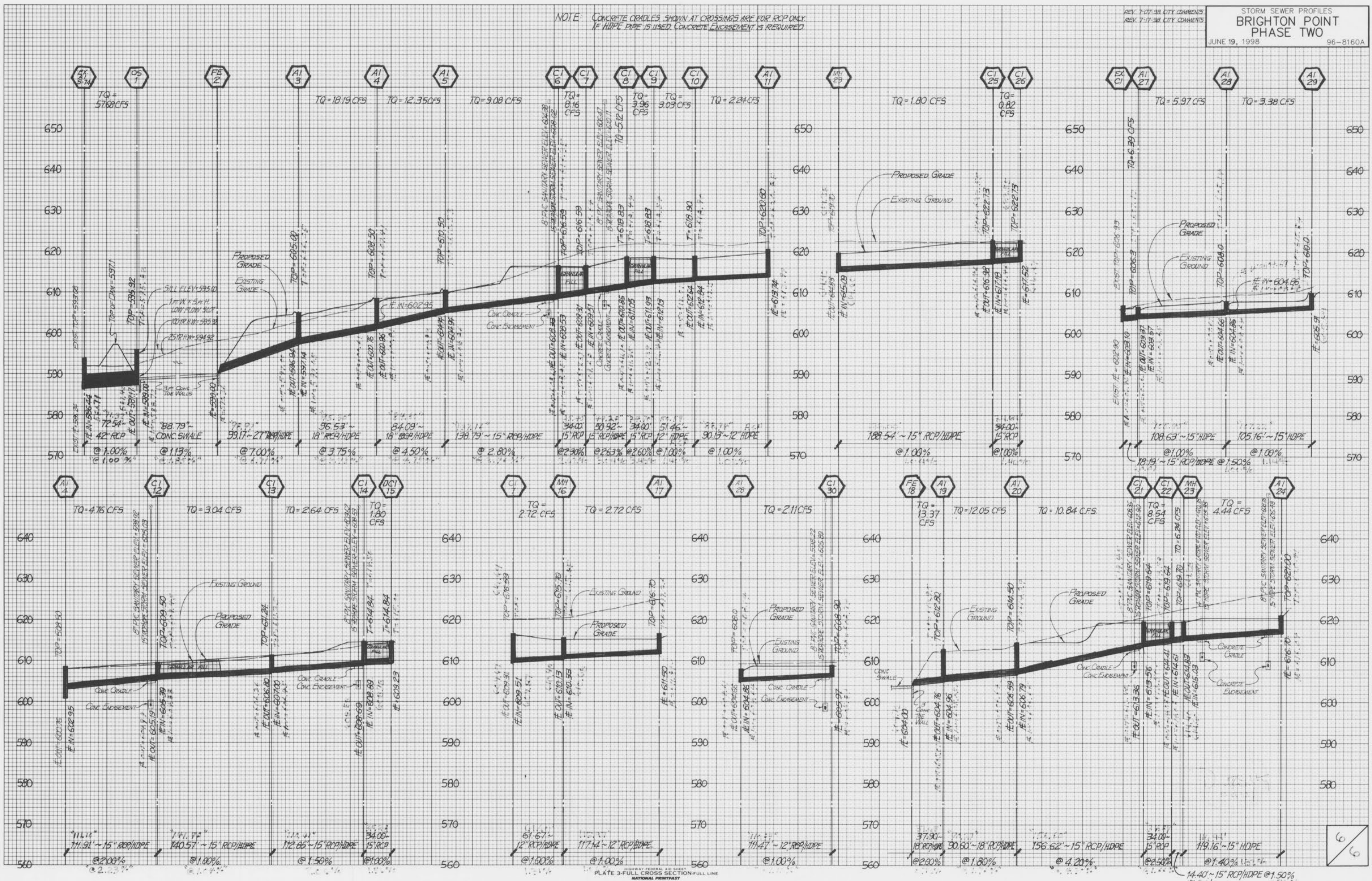


PLATE 3-FULL CROSS SECTION-FULL LINE
 NATIONAL PRINTING