

AS-BUILT SITE CONSTRUCTION PLANS FOR A BUILDING EXPANSION OF COMPONENT BAR PRODUCTS, INC.

GBA PROJECT NO. 11333.00

OWNER
TROY POHLMAN
14050 BOXFORD CT.
CHESTERFIELD, MISSOURI 63017
(636) 939-5956

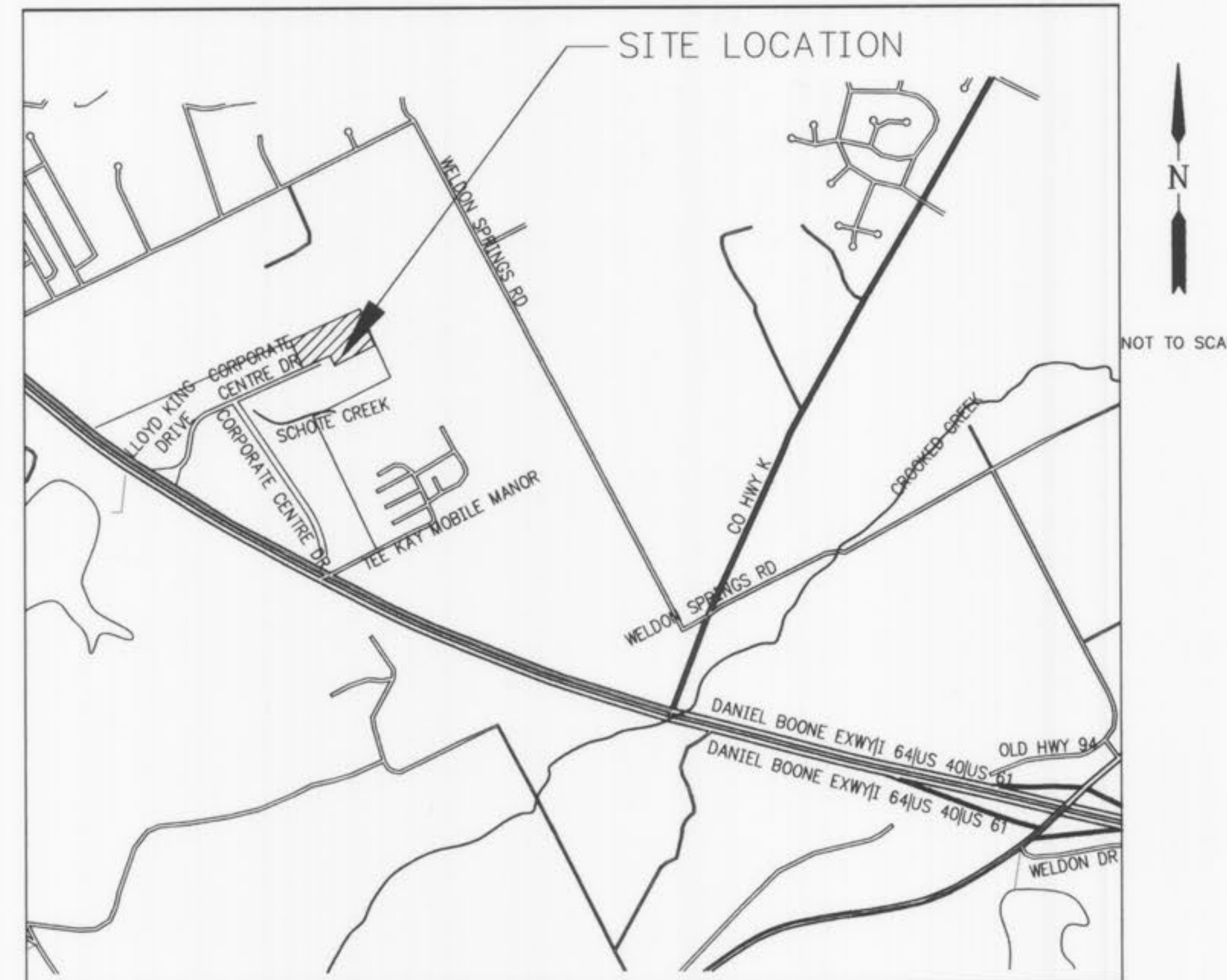
CONTRACTOR
ARCO CONSTRUCTION CO., INC
1750 S. BRENTWOOD BLVD, SUITE 701
ST. LOUIS, MISSOURI 63144
(314) 963-0714
CONTACT: SCOTT VOGELSANG

UTILITY COMPANIES

UTILITY COMPANY	EMERGENCY NO.
AMEREN UE	1-800-552-7583
AT&T LOCAL NETWORK	636-949-1323
COTTEVILLE FIRE PROTECTION DISTRICT	636-447-6655
DUCKETT CREEK SANITARY DISTRICT	636-441-1244
ST. CHARLES GAS COMPANY	636-946-8937
ST. CHARLES PUBLIC WATER DISTRICT #2	636-946-8937

LEGEND

<ul style="list-style-type: none"> ☉ C.O. ○ M.H. ⊗ F.H. ○ W.M. ⊗ W.V. ⊗ G.V. ⊗ P.P. ⊗ S.L. ⊗ T. ⊗ T. ⊗ T. ⊗ F. ⊗ S.F. ⊗ U.I.P. ⊗ T.C.E. ⊗ P.D.E. ⊗ EOP ⊗ R/W ⊗ TYP. ⊗ PROP 	<ul style="list-style-type: none"> LIGHT POLE CLEAN OUT MANHOLE FIRE HYDRANT WATER METER STREET SIGN WATER VALVE GAS VALVE POWER POLE STREET LIGHT GUY WIRE TREE TREE TREE TREE FENCE SILT FENCE TELEPHONE PEDESTAL USE IN PLACE TEMP. CONSTR. ESMT. PERM. DRAINAGE ESMT. EDGE OF PAVEMENT RIGHT-OF-WAY TYPICAL PROPOSED 	<ul style="list-style-type: none"> OHE BUILDING LINE TRANSITION STRIP EXISTING EASEMENT STRIP PROPERTY LINE EXISTING CONTOUR PROPOSED CONTOUR PROPOSED GRADE EXISTING GROUND 6" W GAS SS SAN. UGE TELE UGCATV A.T.G. (R & R) (TBR) SCI DCI MH AI DAI 	<ul style="list-style-type: none"> OVERHEAD ELECTRIC BUILDING LINE TRANSITION STRIP EXISTING EASEMENT STRIP PROPERTY LINE EXISTING CONTOUR PROPOSED CONTOUR PROPOSED GRADE EXISTING GROUND WATER MAIN GAS MAIN STORM SEWER SANITARY SEWER UNDERGROUND ELECTRIC CABLE UNDERGROUND TELEPHONE UNDERGROUND CABLE T.V. ADJUST TO GRADE REMOVE & REPLACE TO BE REMOVED SINGLE CURB INLET DOUBLE CURB INLET MANHOLE AREA INLET DOUBLE AREA INLET
--	---	--	---



INDEX

TITLE SHEET	1
SITE PLAN	2
DEMO/CONSTRUCTION PLAN	3
GRADING PLAN	4
PROFILES/ DRAINAGE AREA MAP	5
LANDSCAPING PLAN	6
DETAILS / NOTES	7-10
PHOTOMETRIC LIGHTING PLAN	11

PROJECT BENCHMARK:

FEMA/USGS BENCHMARK - RM42: Chiseled square on the east end of concrete pier on the south bank of Dardenne Creek at Henning Road Bridge. Elevation = 486.37'

SITE BENCHMARK:

A cut cross in the center of the cul-de-sac of Corporate Centre Drive. Elevation = 529.76' on a survey by George Butler Associates dated December 2006.

Planning and Zoning Commission Notes:

- Approved on January 18, 2007
- File (Case) Number - 502.04



AS-BUILT DRAINAGE AREA AND STORM SEWER PROFILE FOR COMPONENT BAR PRODUCTS BUILDING EXPANSION

GBA
 GEORGE BUTLER ASSOCIATES, INC.
 Engineers / Architects
 Kansas City, Mo. / Lenexa, Ks. / O'Fallon, Mo. / Wichita, Ks.

DATE: SEPTEMBER 2007

DESIGN BY: JJC

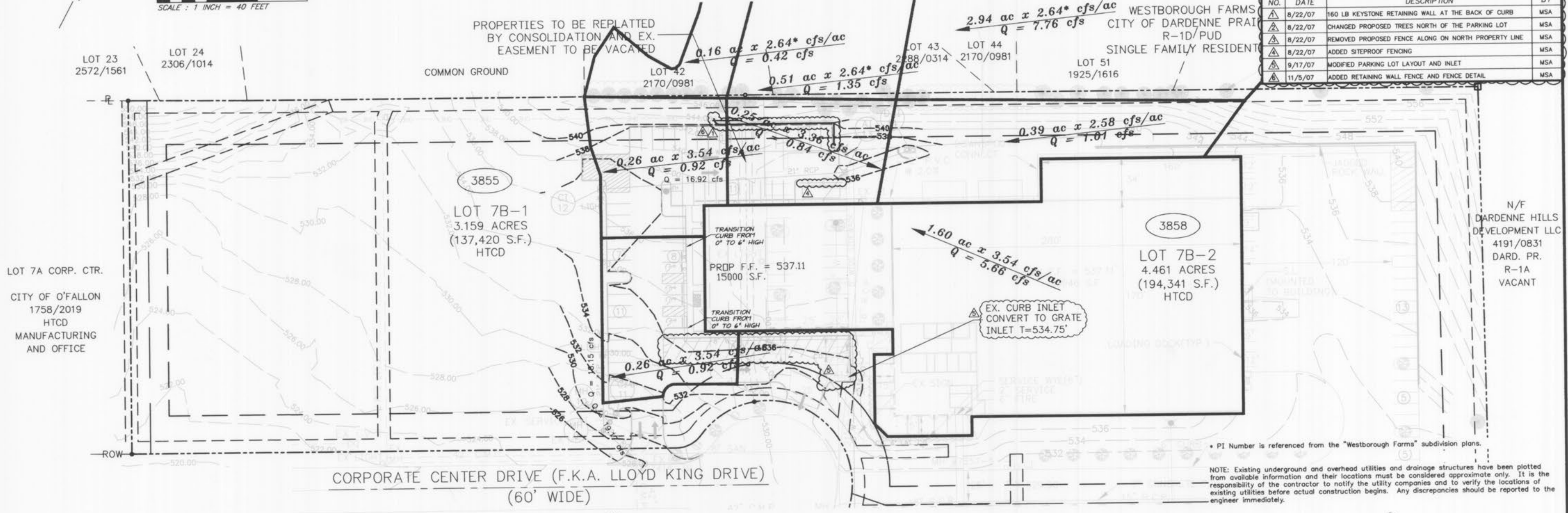
DRAWN BY: MSA

PROJECT NO.: 11333

SHEET NO. TOTAL SHEETS

COMPONENT BAR BUILDING EXPANSION 5 11

NO.	DATE	DESCRIPTION	BY
1	8/22/07	180 LB KEYSTONE RETAINING WALL AT THE BACK OF CURB	MSA
2	8/22/07	CHANGED PROPOSED TREES NORTH OF THE PARKING LOT	MSA
3	8/22/07	REMOVED PROPOSED FENCE ALONG ON NORTH PROPERTY LINE	MSA
4	8/22/07	ADDED SITEPROOF FENCING	MSA
5	9/17/07	MODIFIED PARKING LOT LAYOUT AND INLET	MSA
6	11/5/07	ADDED RETAINING WALL FENCE AND FENCE DETAIL	MSA



NOTE: Existing underground and overhead utilities and drainage structures have been plotted from available information and their locations must be considered approximate only. It is the responsibility of the contractor to notify the utility companies and to verify the locations of existing utilities before actual construction begins. Any discrepancies should be reported to the engineer immediately.

