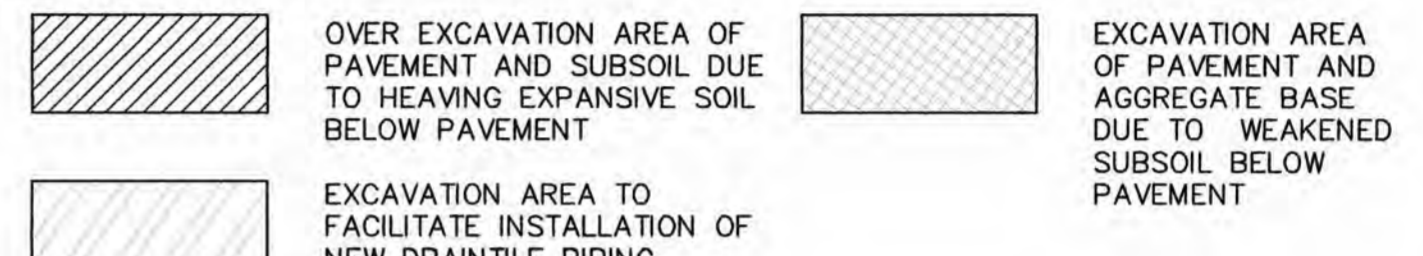


**GENERAL NOTES**

- ALL UTILITIES SHOWN HAVE BEEN LOCATED BY THE ENGINEER FROM AVAILABLE RECORDS. THEIR LOCATION SHOULD BE CONSIDERED APPROXIMATE. THE CONTRACTOR HAS THE RESPONSIBILITY TO NOTIFY ALL UTILITY COMPANIES, PRIOR TO CONSTRUCTION, TO HAVE EXISTING UTILITIES FIELD LOCATED.
- ALL MATERIALS AND METHODS OF CONSTRUCTION TO MEET THE CURRENT STANDARDS AND SPECIFICATIONS AS REQUIRED BY THE CITY OF FALLON.
- GRADING CONTRACTOR SHALL KEEP EXISTING ROADWAYS CLEAN OF MUD AND DEBRIS AT ALL TIMES.
- PROPOSED CONTOURS SHOWN ARE EXISTING ELEVATIONS ON PAVED AND UNPAVED AREAS.
- WHERE EXISTING PAVEMENT MEETS NEW PAVEMENT OR IS INDICATED TO BE REMOVED AND REPLACED, THE CONTRACTOR SHALL SAW CUT 2" DEEP FOR A SMOOTH AND STRAIGHT JOINT AND REPLACE THE PAVEMENT WITH THE SAME TYPE AND DEPTH OF MATERIAL AS EXISTING OR AS INDICATED.
- CONTRACTOR SHALL APPLY JOINT SEALANT BETWEEN CONCRETE GUTTER AND ASPHALT PAVEMENT IN ALL LOCATIONS.
- PHASE 1 IS BASE BID.
- PHASE 1A IS ALTERNATE #1; REFER TO ALTERNATE NOTES ON THIS SHEET.
- CONTRACTOR SHALL ENGAGE THE SERVICES OF A GEOTECHNICAL ENGINEER AS DESCRIBED IN THE EARTHWORK SPECIFICATION.
- COMPACTION OF SUBGRADE AND BACKFILL BELOW PAVEMENT SHALL BE NOT LESS THAN 95% OF MAXIMUM DRY UNIT WEIGHT ACCORDING WITH ASTM D-698; REFER TO SPECIFICATIONS FOR DETAILED INFORMATION.

**HATCH LEGEND**



**KEYED NOTES**

- INSTALL AGGREGATE FILL AND COMPACT AS DESCRIBED IN THE GEOTECHNICAL REPORT BY MIDWEST TESTING DATED OCTOBER 31, 2012. REPLACE ASPHALT PAVEMENT TO MATCH EXISTING (3" ASPHALT ON 8" AGGREGATE BASE; REFER TO DETAIL ON SHEET C3.0.).
- NEW 6" PERFORATED PIPE PLANTER ISLAND UNDER DRAIN; REFER TO DETAIL ON SHEET C3.0.
- NEW STUB DRAINS AT EXISTING OR AS-BUILT FINAL MEASUREMENT PLANS - TWO SHEETS PAVEMENT AS REQUIRED; REFER TO DETAIL ON SHEET C3.0.
- INSTALL NEW INTEGRAL CONCRETE REFER TO DETAIL ON SHEET C3.0.
- NEW CLEANOUT; REFER TO DETAIL ON SHEET C3.0.
- NEW 6" PERFORATED SDR35 PVC TO DRAIN TILE UNDER PAVEMENT TO REMAIN TO ALLOW FOR SMOOTH OVERLAY OVERLAY; REFER TO DETAIL ON SHEET C3.0.
- NEW PRECAST CONCRETE STORM INLET REFER TO DETAIL ON SHEET C3.0; REFER TO DETAIL ON SHEET C3.0.
- FRENCH DRAIN; 1" CLEAN AGGREGATE 140N FILTER FABRIC WITH 6" SDR DRAIN TILE REFER TO DETAIL ON SHEET C3.0.
- INSTALL NEW ASPHALT OVERLAY AND DRIVE LANES WITHIN PROJECT TO INLETS. MILL DOWN EXISTING ASPHALT TO REMAIN TO ALLOW FOR SMOOTH GUTTER PORTION OF EXISTING OF ASPHALT OVERLAY.
- IN AREA OF PAVEMENT SHOWING DEMOLITION PLAN, THE CONTRACTOR SHALL DEMOLISH AND RE-PAVE TO MATCH EXISTING FLUSH WITH EXISTING PAVEMENT IN PREPARATION FOR NEW ASPHALT OVERLAY.
- RE-STRIPE PARKING LOT TO MATCH EXISTING IN ALL AREAS; 4" WIDE WHITE; REFER TO SPECIFICATIONS.
- FURNISH AND INSTALL NEW CONCRETE INLET TOP AND GRATES TO MATCH EXISTING (TYPICAL AT ALL EXISTING STORM INLETS).
- BACKFILL ISLAND WITH SOIL FILL; CROWN SOIL TO 6" ABOVE CURB LINE AT CENTER OF ISLAND AND HOLD SOIL DOWN 2" BELOW TOP OF CURB AT CURB LINE; REINSTALL LANDSCAPE IRRIGATION SYSTEM; INSTALL KENTUCKY BLUEGRASS SOD ON TOP OF SOIL FILL.
- EXISTING RIVER STONE.
- CONNECT FRENCH DRAIN PIPING TO DRAIN TILE PIPING.
- REPLACE EXPOSED AGGREGATE CONCRETE BAND THAT WAS NOTED TO BE REMOVED ON C1.0 WITH NEW EXPOSED AGGREGATE CONCRETE TO MATCH EXISTING.
- SILTATION CONTROL (SILT SOCK AROUND INLETS OR SILT FENCE PER DETAIL ON SHEET C4.0.)

**BID ALTERNATES:**

- CONTRACTOR SHALL PROVIDE LINE ITEM IN BID FOR ALL SCOPE LOCATED WITHIN PHASE 1A BOUNDARY LINE.
- CONTRACTOR SHALL PROVIDE LINE ITEM UNIT COST IN BID FOR EACH OF THE FOLLOWING:
  - INSTALL CRACK SEALER
  - SEALCOAT AND RE-STRIPE PARKING LOT AREAS.
- CIRCLE NOTE 3-CONTRACTOR SHALL PROVIDE A LINE ITEM BID TO INSTALL 3" DEPTH SECTION OF RIVER STONE OVER 4 OZ. (MINIMUM) LANDSCAPING WEED BLOCK FABRIC IN ENTIRE PLANTER ISLAND. NEW STONE SHALL MATCH EXISTING STONE ON SITE IN LOCATION DESIGNATED BY DIAMOND NOTE #14. PROVIDE CREDIT FOR DELETING SOD AND IRRIGATION FROM SCOPE.
- CIRCLE NOTE 4-CONTRACTOR SHALL PROVIDE A LINE ITEM BID TO INSTALL AN 18" WIDE BAND OF RIVER STONE WITH WEED BLOCK FABRIC, SIMILAR TO BID ALTERNATE 3, ALONG CURB LINE AT ENDCAP OF PLANTER ISLAND AND AT ALL INTERIOR ISLANDS.

**BID ALTERNATES CONTINUED:**

- CONTRACTOR SHALL PROVIDE AN ALTERNATE BID TO REMOVE ALL ASPHALT LOCATED WITHIN PHASE BOUNDARY AND REPLACE WITH 2" OF TYPE C ASPHALTIC CONCRETE ON 1" OF TYPE X BITUMINOUS BASE UNLESS NOTED OTHERWISE. NEW ASPHALT SHALL MATCH EXISTING GRADES AND PROVIDE POSITIVE DRAINAGE TO INLETS. NEW ASPHALT SHALL NOT PAVE OVER CURB AND GUTTER. PROVIDE CREDIT FOR DELETING SAWCUT, MILLING OF EXISTING AT PHASE BOUNDARY.
- PROVIDE ALTERNATE AS FOLLOWS: ASSUMING ALTERNATE #5 IS ACCEPTED CONTRACTOR SHALL PROVIDE LINE ITEM BID TO PROVIDE SOIL STABILIZATION BY INCORPORATING 5% BY UNIT WEIGHT MINIMUM PORTLAND CEMENT INTO TOP 12" OF BASE MATERIAL (8" AGGREGATE BASE AND TOP 4" OF SUB-SOIL) IN LIEU OF REMOVAL AND REPLACEMENT OF THE PAVEMENT AGGREGATE BASE.

PREPARED BY:

**Stock & Associates**  
 Consulting Engineers, Inc.

257 Chesterfield Business Parkway  
 St. Louis, MO 63005 PH. (636) 530-9100 FAX (636) 530-9130  
 e-mail: general@stockassoc.com  
 Web: www.stockassoc.com

**AS-BUILT**  
 STORM SEWER MEASUREMENTS

The existing sewer lengths, sizes, flowlines, depths of structures and sewers and locations have been measured. The results of measurement are shown on this set of Final Measurement plans.

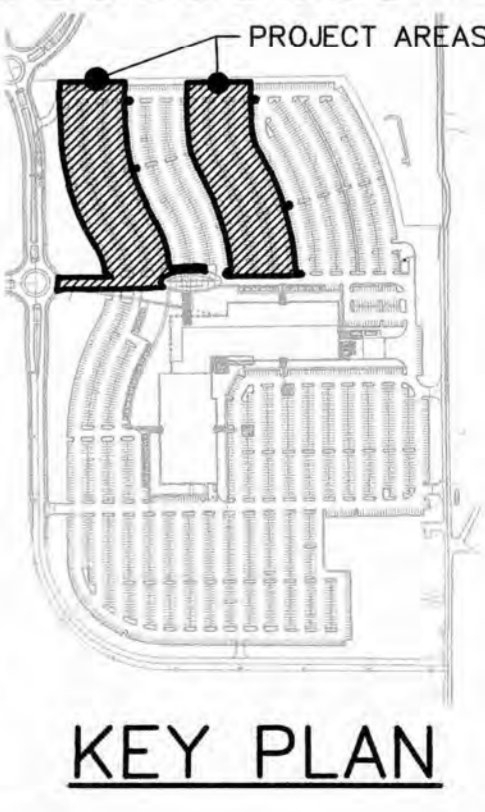
*Randall S. Rosson* 4/12/18  
 Randall S. Rosson, P.L.S. NO. 2006-000171 Date

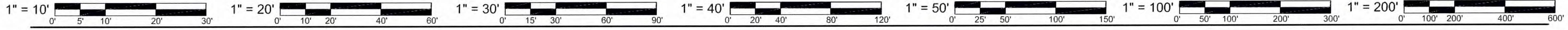


REV	DATE	DESCRIPTION	APPD
1	06/29/17	ADDENDUM #1	SLK
2	8/25/17	CITY COMMENTS	SLK

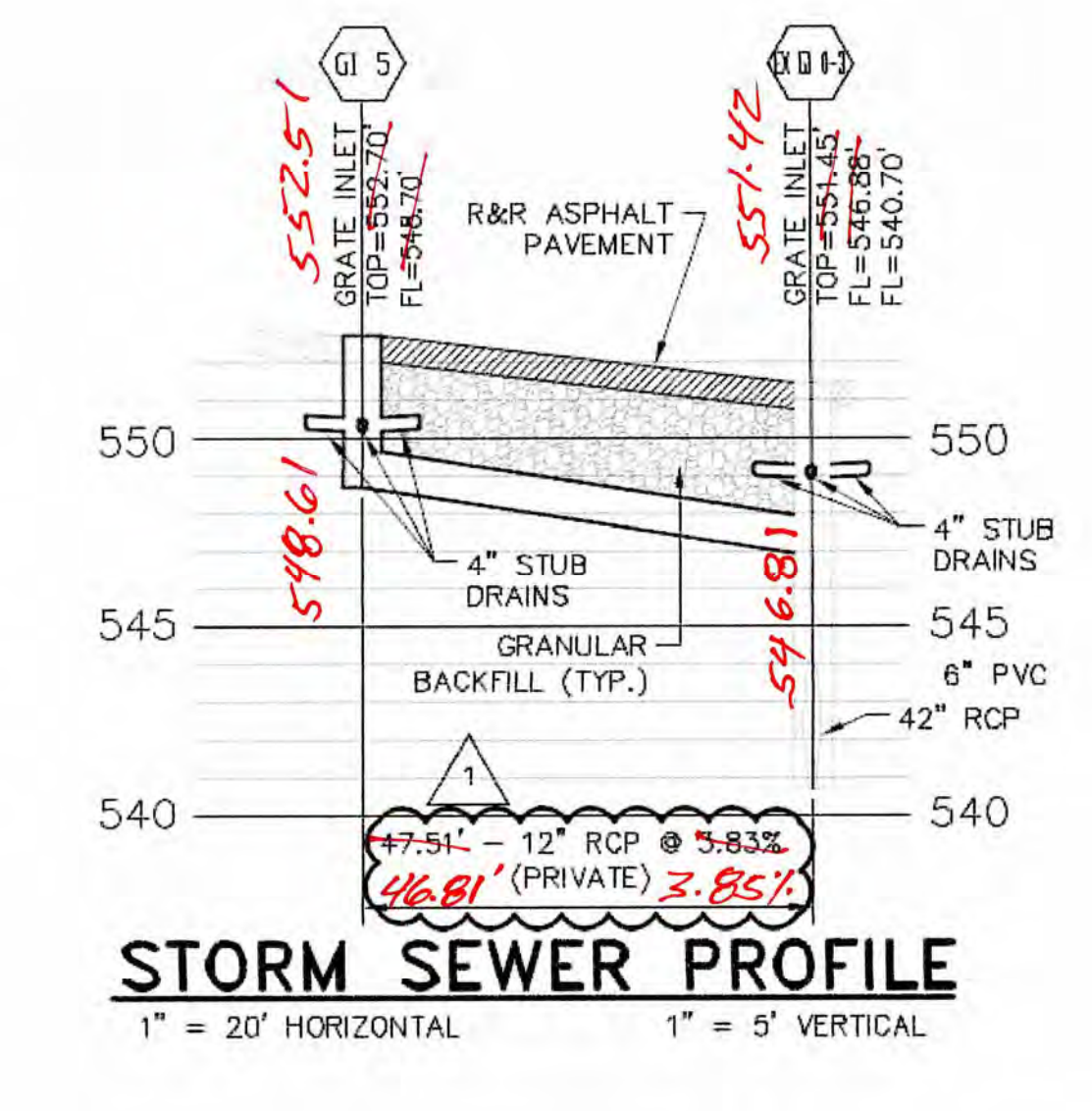
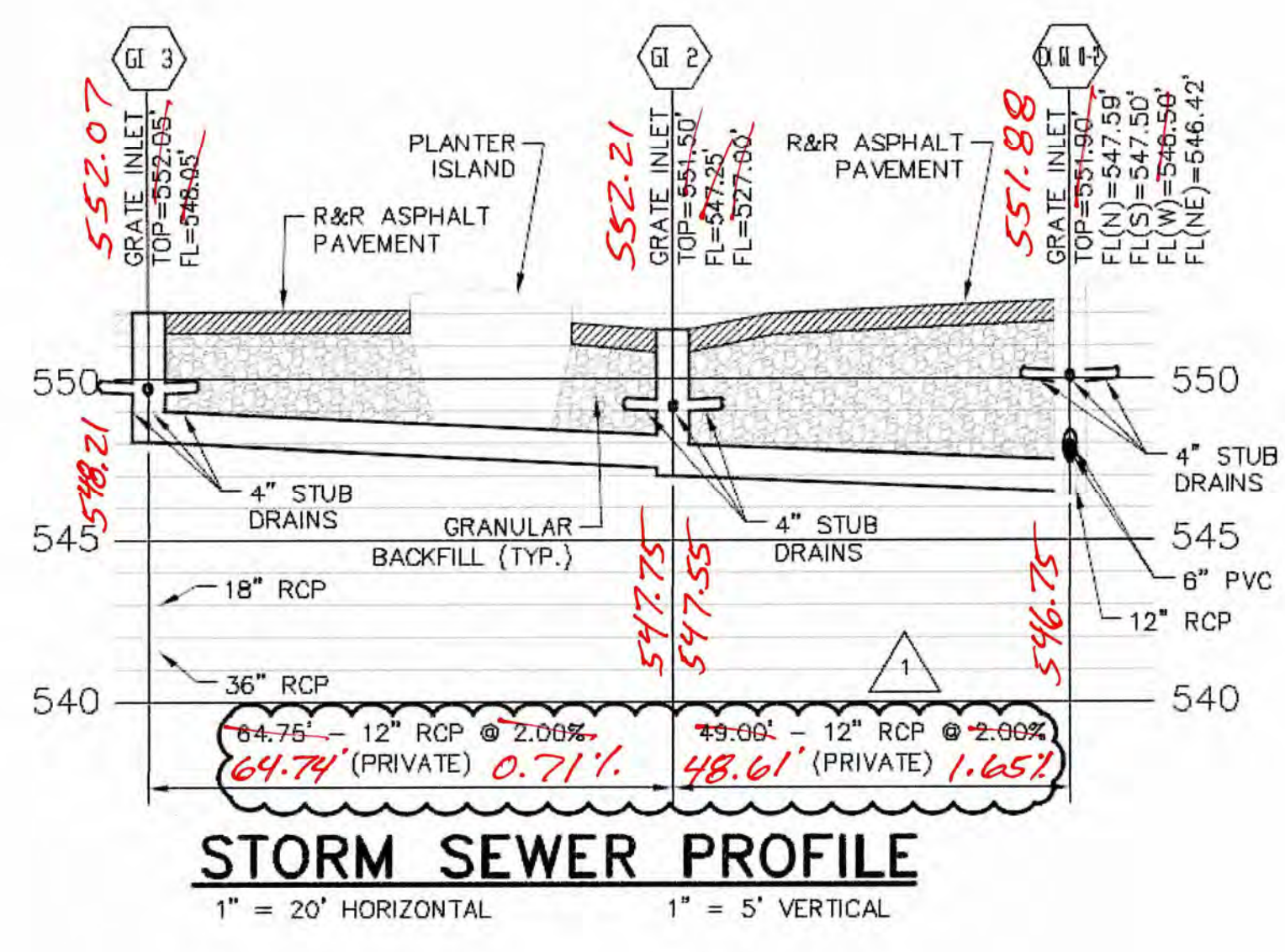
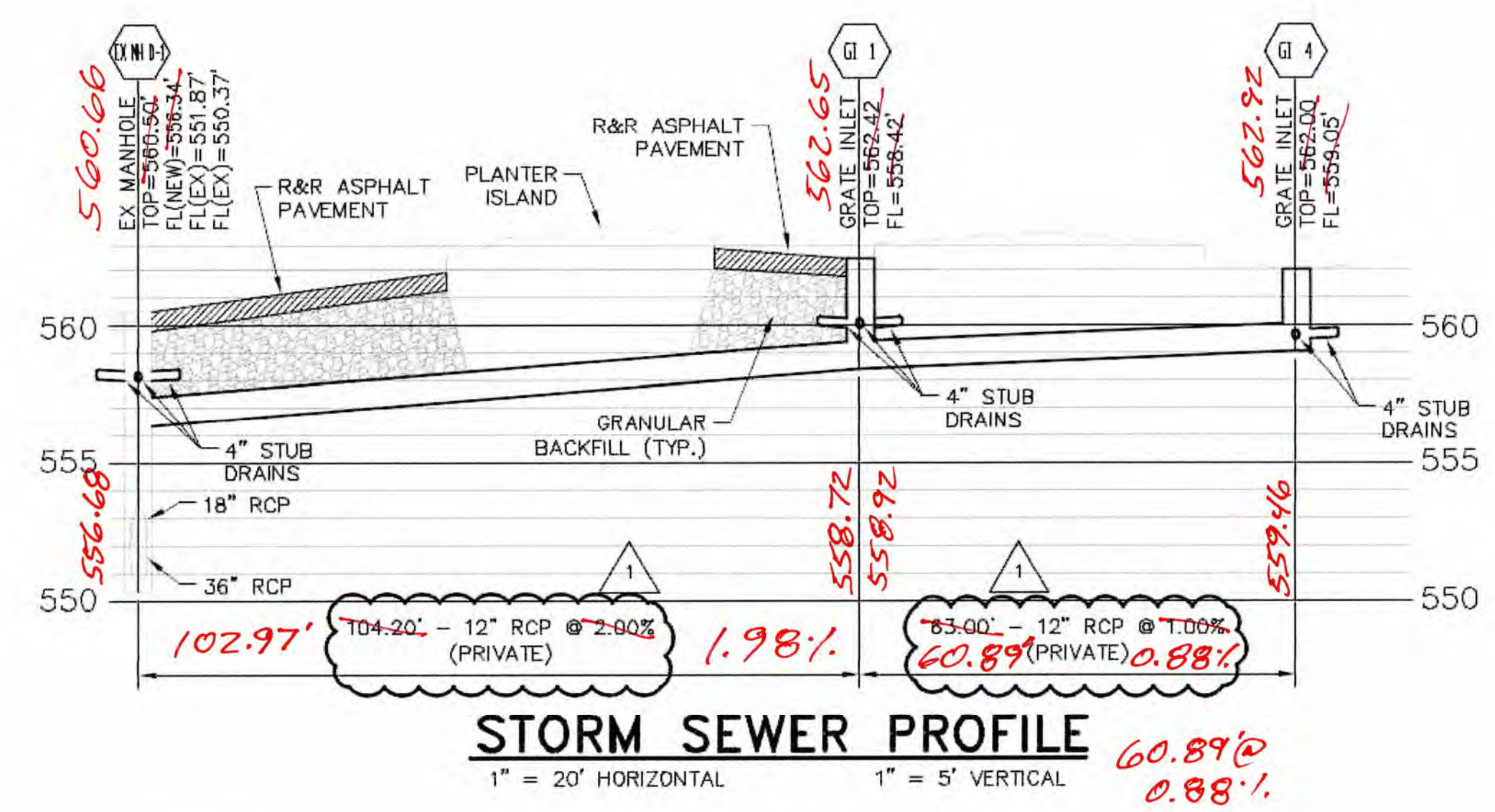
DATE ISSUED:	06/12/17
PROJ. NO.:	17008.01
ENGINEER:	SLK
DRAWN BY:	SLK
CHECKED BY:	SLK

**WEST PARKING LOT - SITE PLAN**  
 1" = 40'





NOT WITHIN +/- 0.5 FEET



NOT WITHIN +/- 0.5 FEET

**citimortgage**  
1000 Technology Drive  
O'Fallon, MO 63304  
**WEST PARKING LOT REPAIRS - PHASE 1&4**

AS-BUILT FINAL MEASUREMENT PLANS - TWO SHEETS  
PREPARED BY:

**STOCK & ASSOCIATES**  
Consulting Engineers, Inc.  
257 Chesterfield Business Parkway  
St. Louis, MO 63005 PH. (636) 530-9100 FAX (636) 530-9130  
e-mail: general@stockassoc.com  
Web: www.stockassoc.com

**AS-BUILT**  
STORM SEWER MEASUREMENTS

The existing sewer lengths, sizes, flowlines, depths of structures and sewers and locations have been measured. The results of measurement are shown on this set of Final Measurement plans.

*Randall S. Rosson* 4/12/18  
Randall S. Rosson, P.L.S. NO. 2006-000171 Date



REV	DATE	DESCRIPTION	APPD
1	8/25/17	CITY COMMENTS	SLK

DATE ISSUED:	06/12/17
PROJ. NO.:	17008.01
ENGINEER:	SLK
DRAWN BY:	SLK
CHECKED BY:	SLK
DRAWING TITLE:	<b>SEWER PROFILES</b>