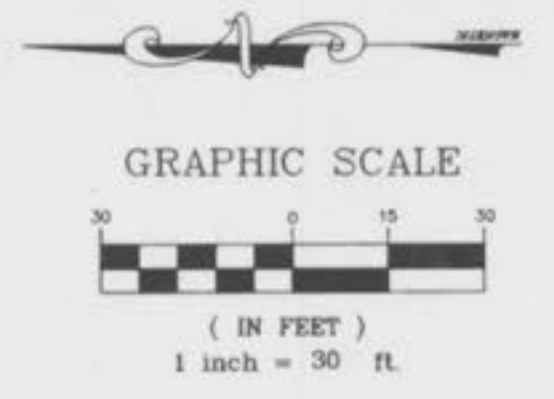
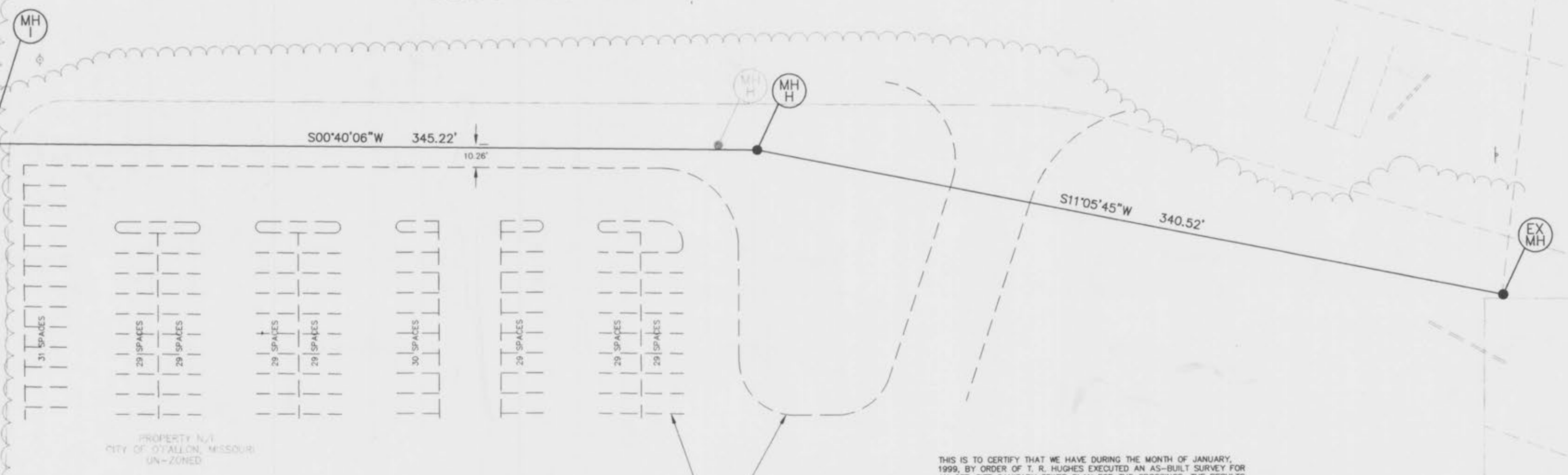


A PARTIAL SANITARY SEWER AS-BUILT FOR
THE CROSSINGS
 A TRACT OF LAND IN
 SECTION 21, 22, U.S. SURVEY 63 AND 3070,
 TOWNSHIP 47 NORTH, RANGE 3 EAST,
 ST. CHARLES COUNTY, MISSOURI



COOL SPRINGS ROAD

TOM GINNEVER AVENUE



PROPERTY N.1
 CITY OF STATION, MISSOURI
 UN-ZONED

FUTURE PARKING LOT
 PER PLANS BY G.B.A.

THIS IS TO CERTIFY THAT WE HAVE DURING THE MONTH OF JANUARY, 1999, BY ORDER OF T. R. HUGHES EXECUTED AN AS-BUILT SURVEY FOR AN OFF-SITE SANITARY SEWER PLAN FOR THE CROSSINGS. THE RESULTS OF THIS AS-BUILT SURVEY ARE SHOWN ON THIS PLAT TO THE BEST OF MY KNOWLEDGE AND BELIEF.

BAX ENGINEERING CO., INC.
 DARREL R. OAKLEY
 MO REG. L.S. #2265

PREPARED FOR:
 T.R. HUGHES
 239 FOXHILL ROAD
 ST. CHARLES, MO 63301
 (314) 940-9300

DISCLAIMER OF RESPONSIBILITY
 I hereby certify that the documents intended to be authorized by my seal are limited to this sheet, and I hereby disclaim any responsibility for all other drawings, specifications, estimates, reports or other documents or instruments relating to or intended to be used for any part or parts of the architectural or engineering project or survey.

Copyright 1998
 Bax Engineering Company, Inc.
 All Rights Reserved

REVISIONS	
8/4/98	REVISIONS
8/17/98	CITY COMMENTS
9/17/98	REVISIONS
10/16/98	CLIENT REVISIONS
1-21-99	FL CHANGE EX. MH



1052 South Cloverleaf Drive
 St. Peters, MO. 63376-6445
 314-928-5552
 FAX 928-1718



SANITARY SEWER PROFILE

SCALE: 1" = 30' H.
 SCALE: 1" = 10' V.



01-27-99
 DATE
 97-92031
 PROJECT NUMBER
 1 of 1
 SHEET OF
 92031ASB.DWG
 FILE NAME
 DCF DRO
 DRAWN CHECKED

\\bax-drive\dwg\92031ASB.DWG Mod Jan 27 11:56:43 1999 STATION 35