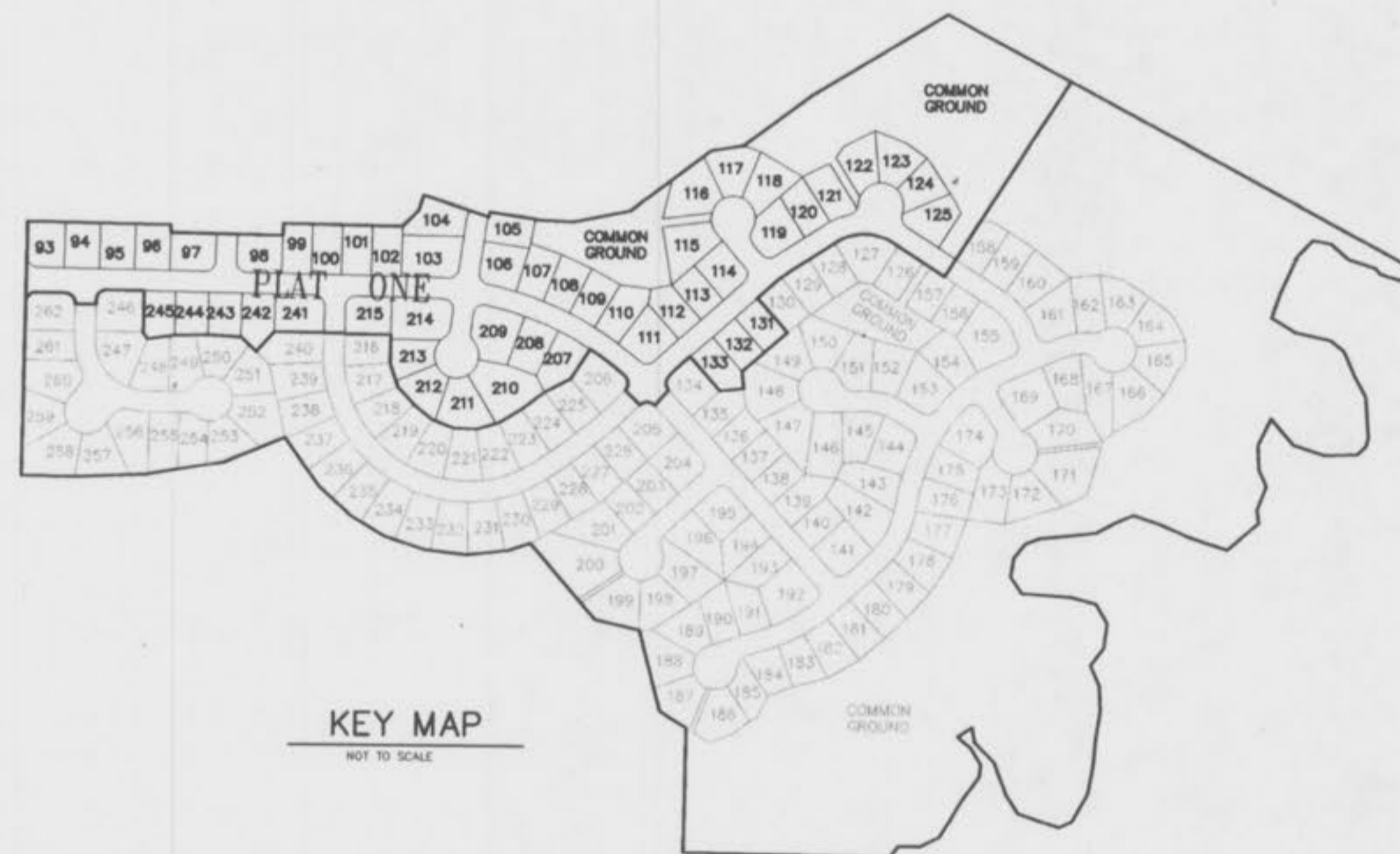
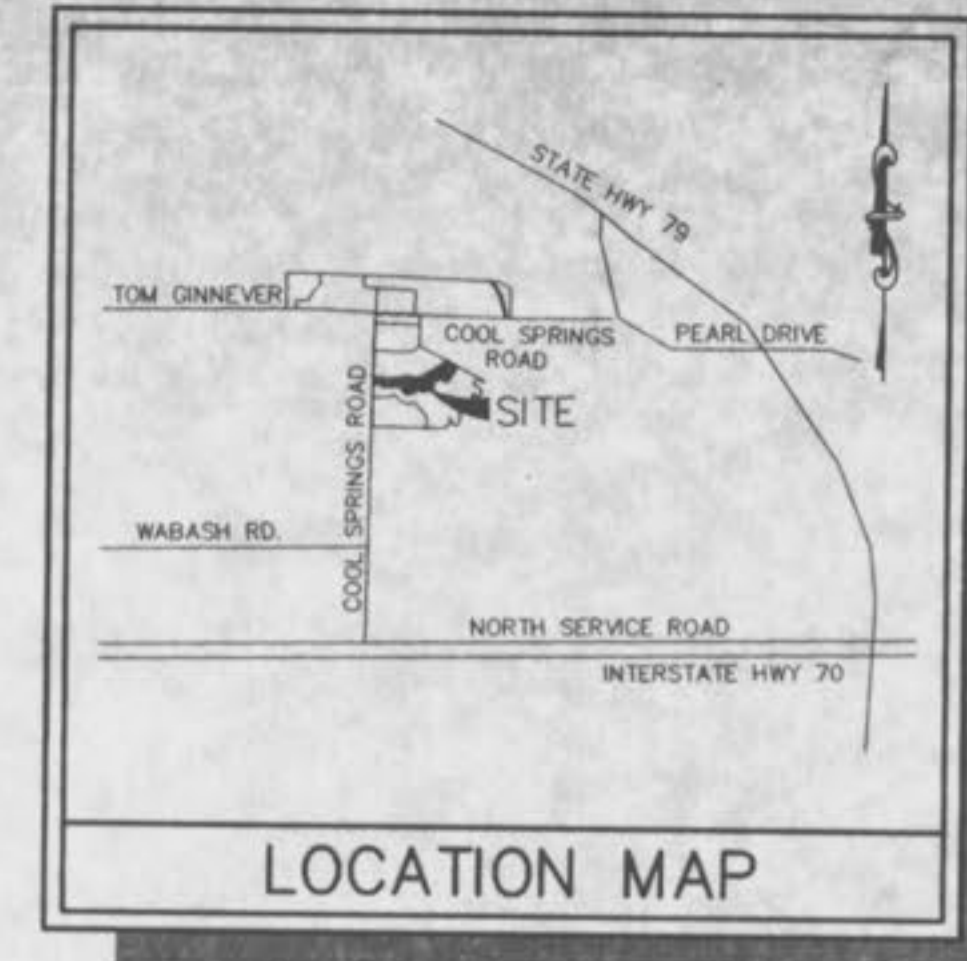


"SANITARY & STORM SEWER AND WATER AS-BUILTS"  
**THE CROSSINGS**  
**VILLAGE C**  
 (PLAT ONE)

A TRACT OF LAND BEING PART OF  
 SECTION 19 AND SECTION 30, TOWNSHIP 47 NORTH, RANGE 3 EAST,  
 OF THE FIFTH PRINCIPAL MERIDIAN  
 ST. CHARLES COUNTY, MISSOURI



KEY MAP  
 NOT TO SCALE

THIS IS TO CERTIFY THAT WE HAVE DURING THE MONTH OF AUGUST, 1999, BY ORDER OF T. R. HUGHES, INC. EXECUTED AN AS-BUILT SURVEY OF THE SANITARY & STORM SEWER AND WATER, FOR "THE CROSSINGS VILLAGE C PLAT ONE" A SUBDIVISION ACCORDING TO THE PLAT THEREOF RECORDED IN PLAT BOOK PAGES OF THE ST. CHARLES COUNTY RECORDS. THE SANITARY LATERALS IF ANY WERE TAKEN FROM INFORMATION SUPPLIED TO BAX ENGINEERING BY THE CONTRACTOR, THEREFORE THEIR LOCATION IS ASSUMED APPROXIMATE. ALL SEWERS SHOWN LIE WITHIN THE EASEMENTS AS SHOWN ON SAID SUBDIVISION PLAT UNLESS OTHERWISE NOTED. THE RESULTS OF THIS AS-BUILT SURVEY ARE SHOWN ON THIS PLAT TO THE BEST OF MY KNOWLEDGE AND BELIEF.

BAX ENGINEERING CO., INC.  
 DARREL R. OAKLEY  
 MO REG. L.S. #2265

**BENCHMARK**  
 U.S.G.S.  
 Chiseled L on top of wingwall in northeast corner of Old Highway 79 bridge over Belleau Creek. Elev. = 456.02

**SITE**  
 Cross at the centerline intersection of Vantage Pass and Kingston Crossing in The Crossings Village C.  
 Elev. = 497.69

**SHEET INDEX**

1 OF 8	COVER SHEET
2 & 3 OF 8	SITE PLAN
4-6 OF 8	SANITARY SEWER PROFILES
7 & 8 OF 8	STORM SEWER PROFILES

PREPARED FOR:  
 T.R. HUGHES, INC.  
 239 FOX HILL ROAD  
 ST. CHARLES, MO. 63301  
 (314) 940-9300

DISCLAIMER OF RESPONSIBILITY  
 I hereby specify that the documents intended to be authorized by my seal are limited to this sheet, and I hereby disclaim any responsibility for all other drawings, specifications, estimates, reports or other documents or instruments resulting or intended to be used for any part or parts of the architectural or engineering project or survey.

Copyright 1998  
 Bax Engineering Company, Inc.  
 All Rights Reserved.

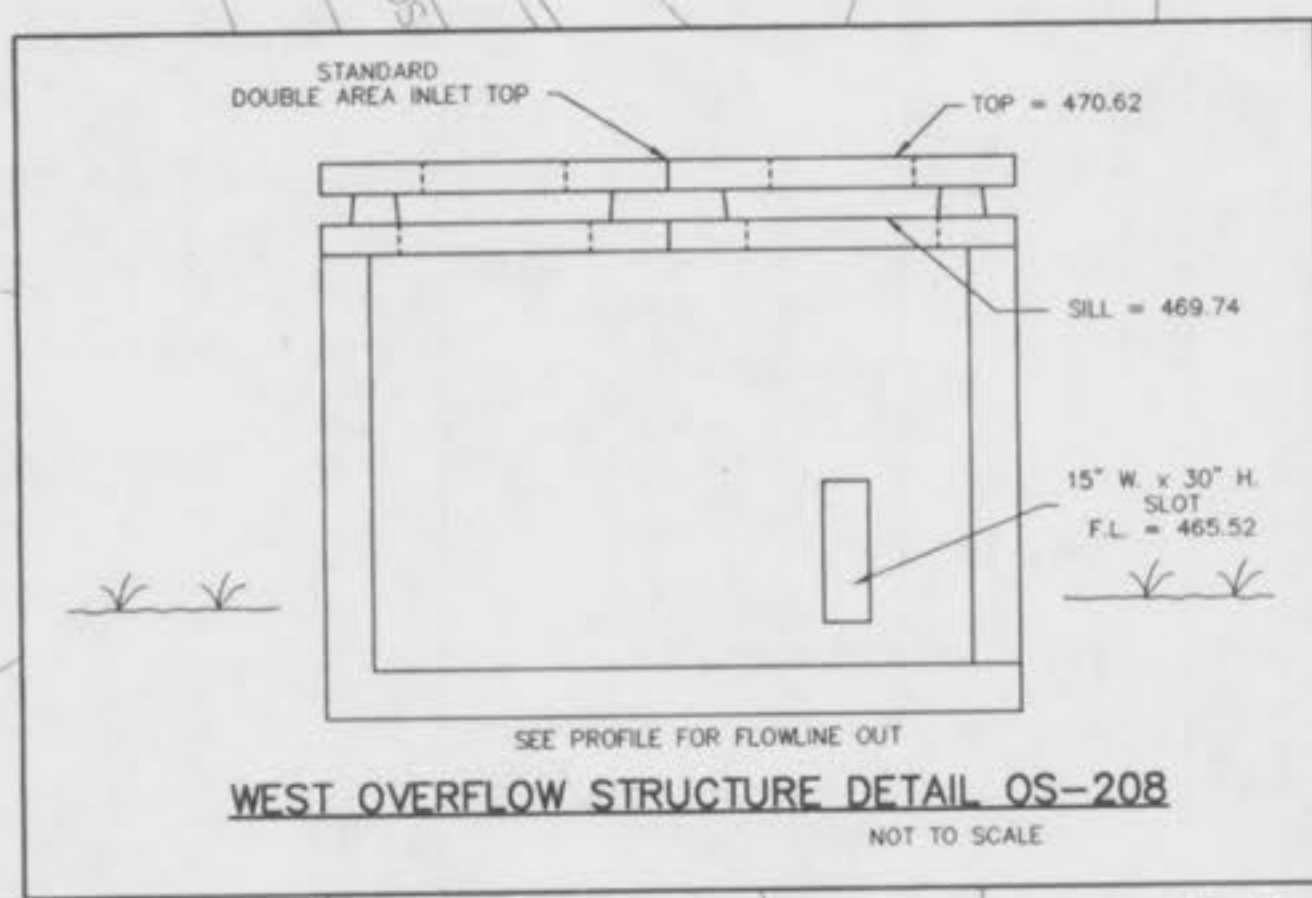
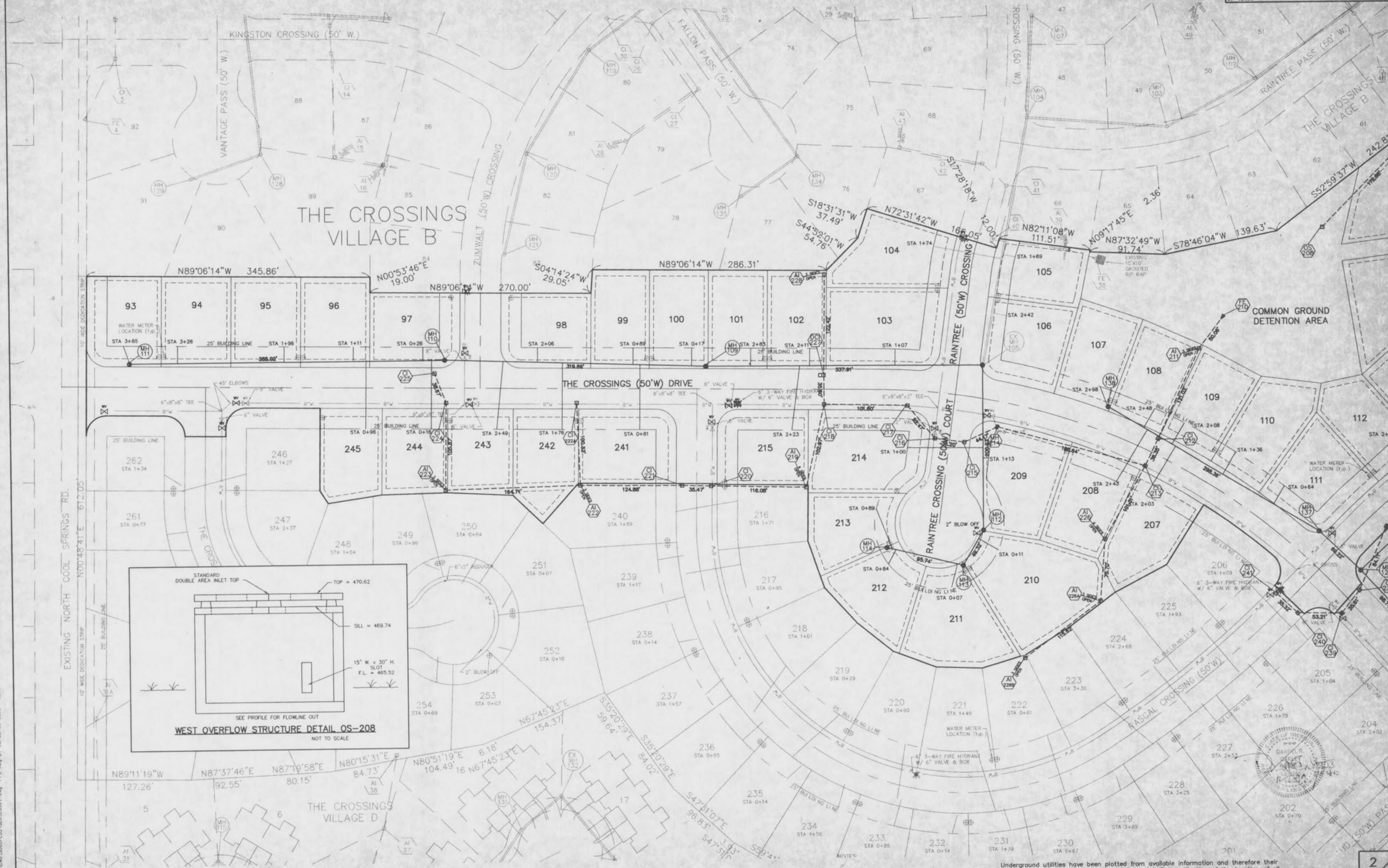
**REVISIONS**

12-9-99	ADJUSTED TOPS

**BAX**  
 ENGINEERING  
 PLANNING  
 SURVEYING

1052 South Cloverleaf Drive  
 St. Peters, MO. 63376-8445  
 314-928-5592  
 FAX 928-1718

AUGUST, 1999  
 DATE  
 97-9203C  
 PROJECT NUMBER  
 1 OF 8  
 SHEET OF  
 9203CCOVASB.DWG  
 FILE NAME  
 LLG DRO  
 DRAWN CHECKED

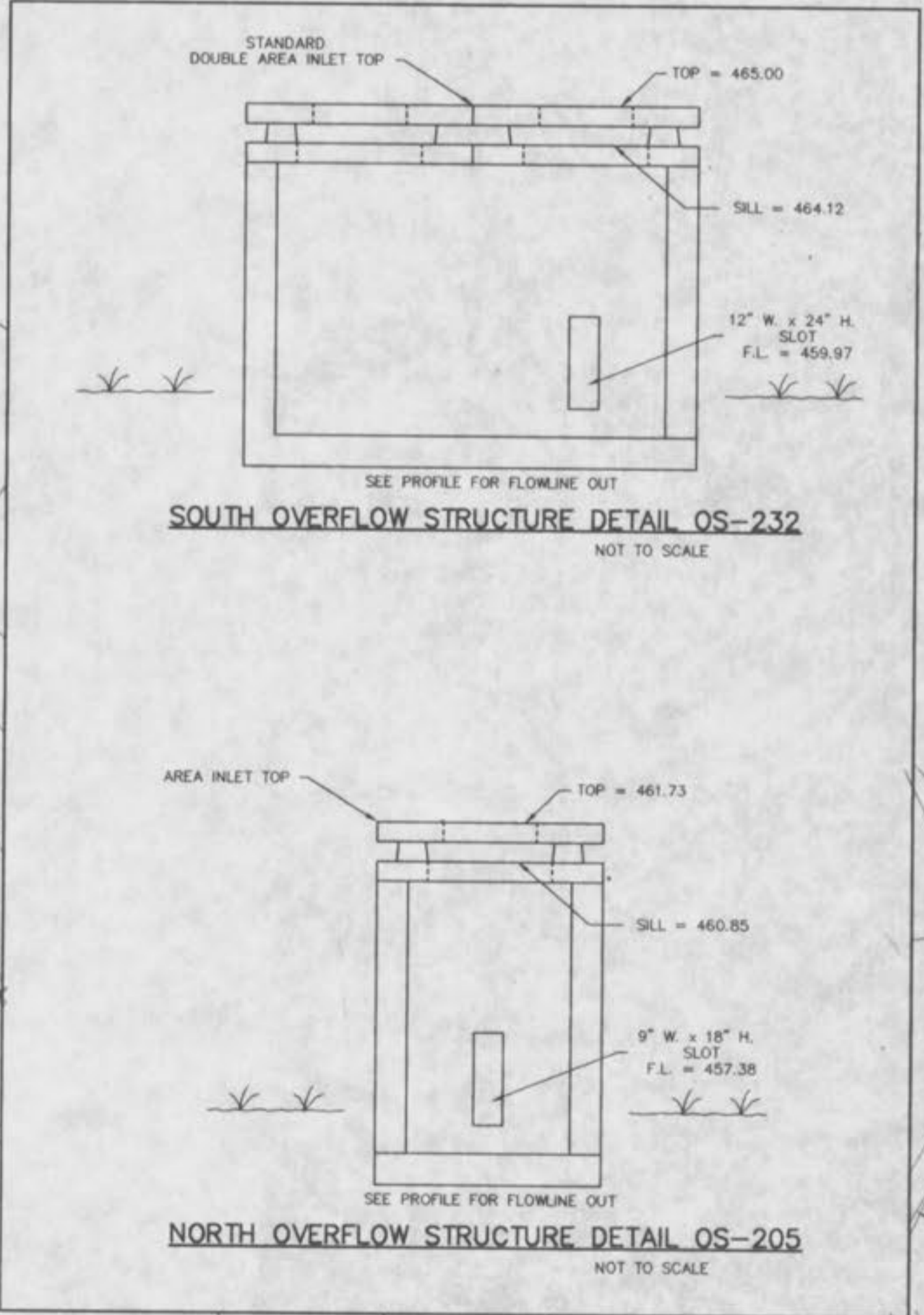
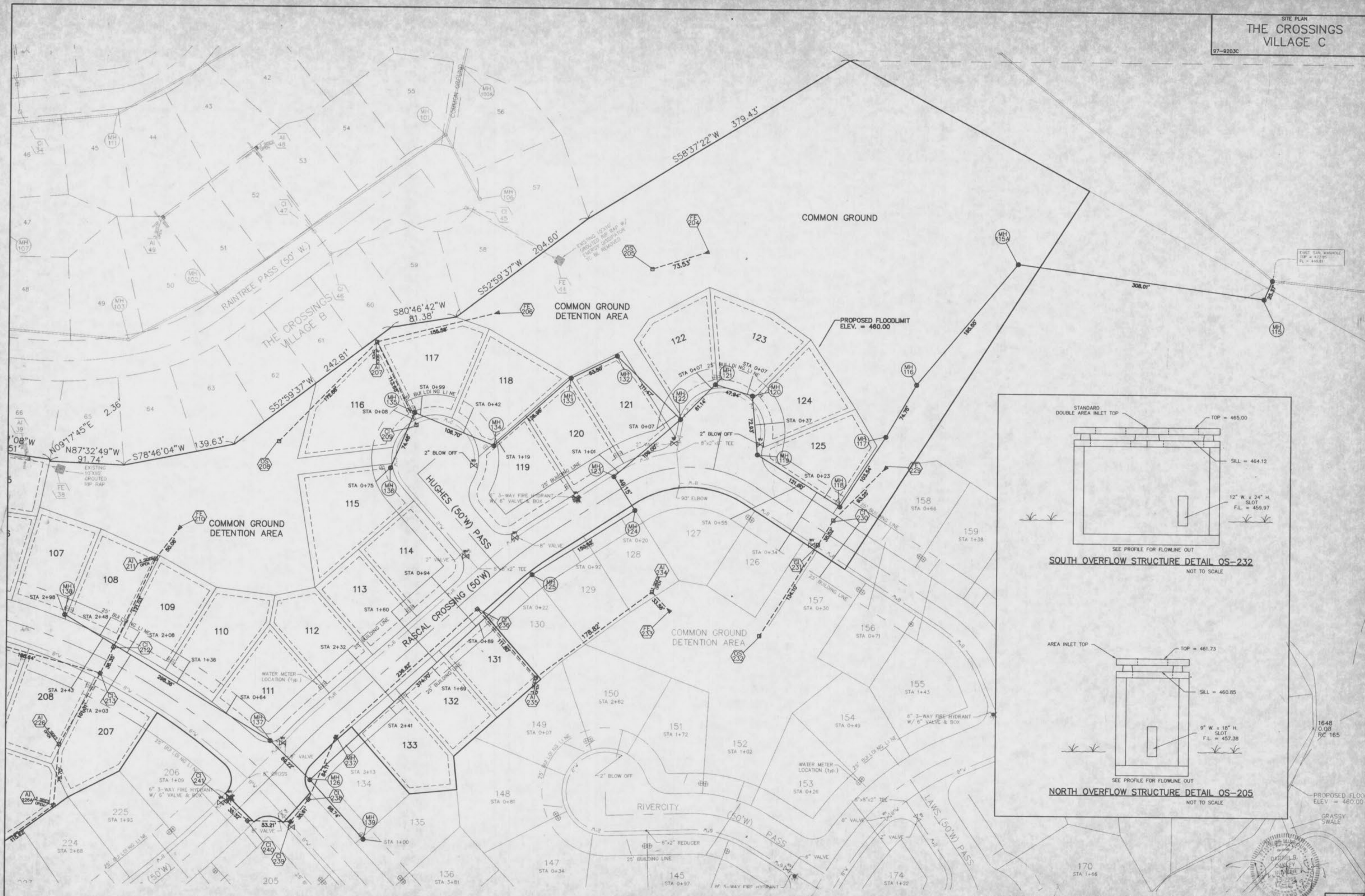


Underground utilities have been plotted from available information and therefore their locations shall be considered approximate only. The verification of the location of all underground utilities, either shown or not shown on these plans shall be the responsibility of the contractor, and shall be located prior to any grading or construction of the improvements.

"AS-BUILTS ADDED AUGUST, 1999"

(REVISED 12-9-99)

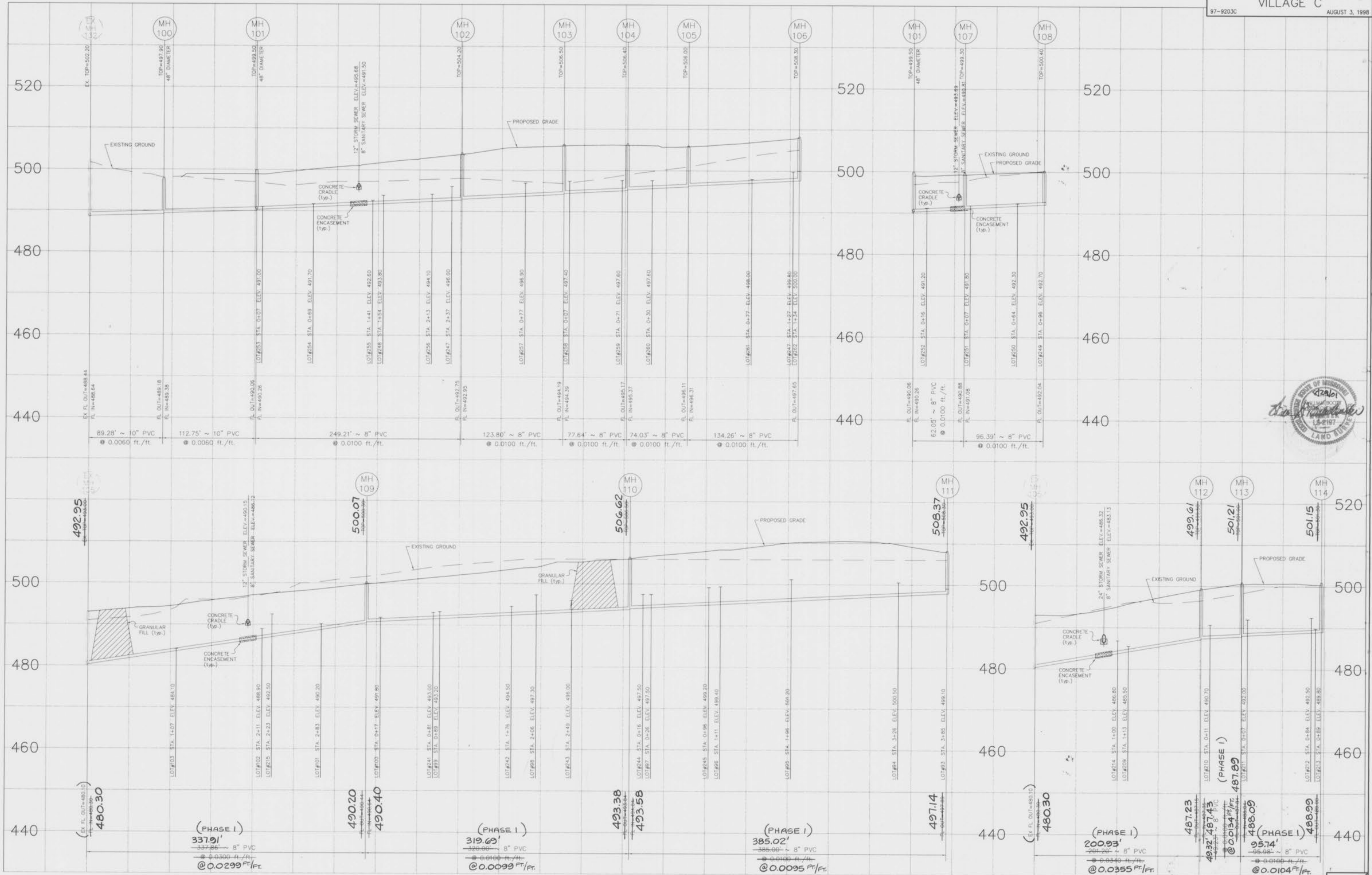
\\Ba\p-d\p1\dwg\92000\US9203c.tbl1.dwg P1, Aug 27 08:35:51, 1999 LLL



(REVISED 12-9-99) "AS-BUILTS ADDED AUGUST, 1999"

Underground utilities have been plotted from available information and therefore their locations shall be considered approximate only. The verification of the location of all underground utilities, either shown or not shown on these plans shall be the responsibility of the contractor, and shall be located prior to any grading or construction of the improvements.

\\bak10-drt1e\dwg\9203c\97-9203c.dwg P1 Aug 27 08 11:28 1999, LLL



NOTE:  
All sanitary sewer lateral tailstack elevations have been designed for 9.0' basements in homes.

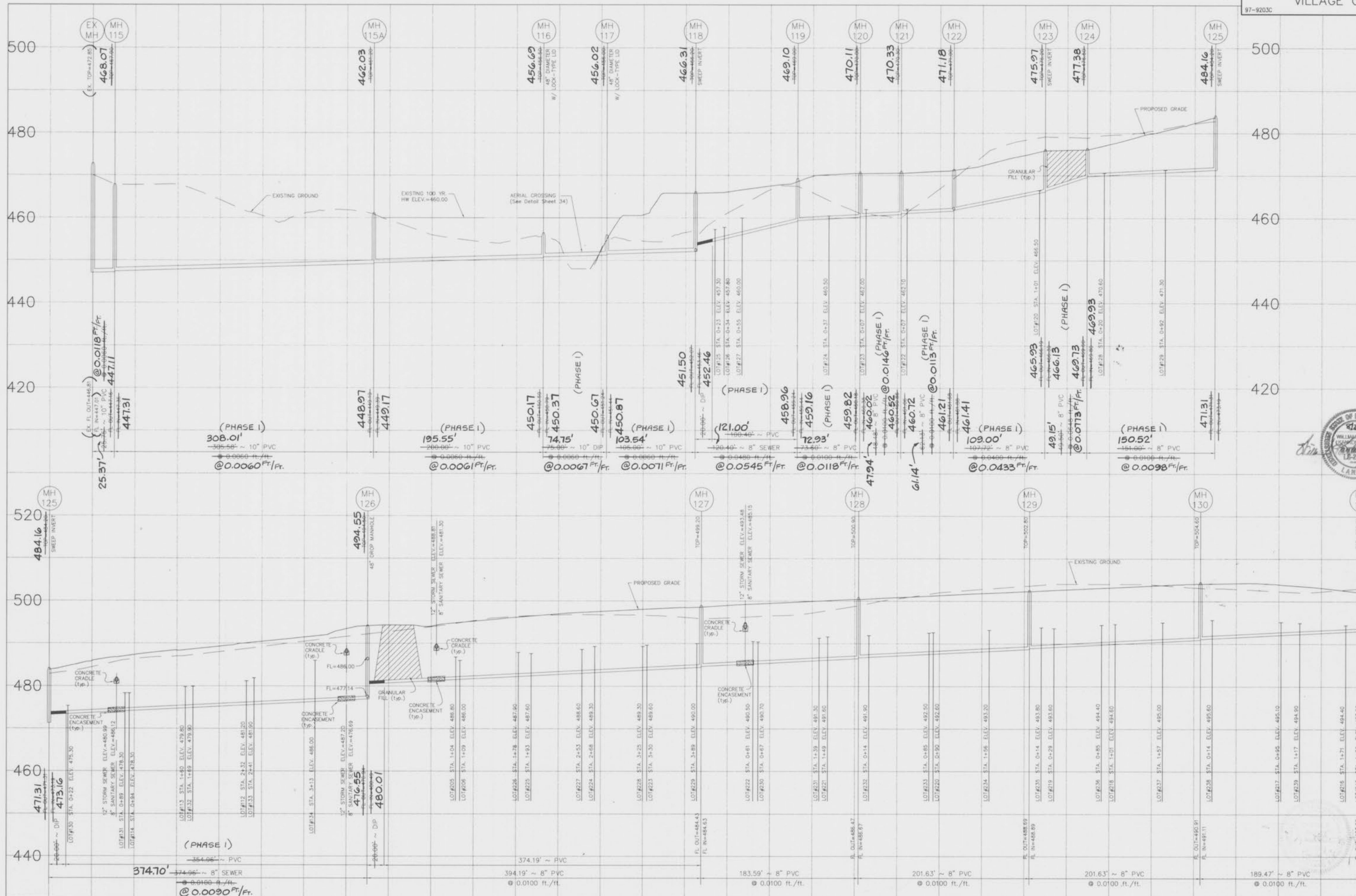
SCALE:  
VERTICAL = 1:10  
HORIZONTAL = 1:50

4  
8

(REVISED 12-9-99)

"AS-BUILTS ADDED AUGUST, 1999"

\\bbs10-cv1\pvt\dwg\980909\US\980320\con.dwg Thu Oct 15 07:59:01 1998 STA:110N 24 10C



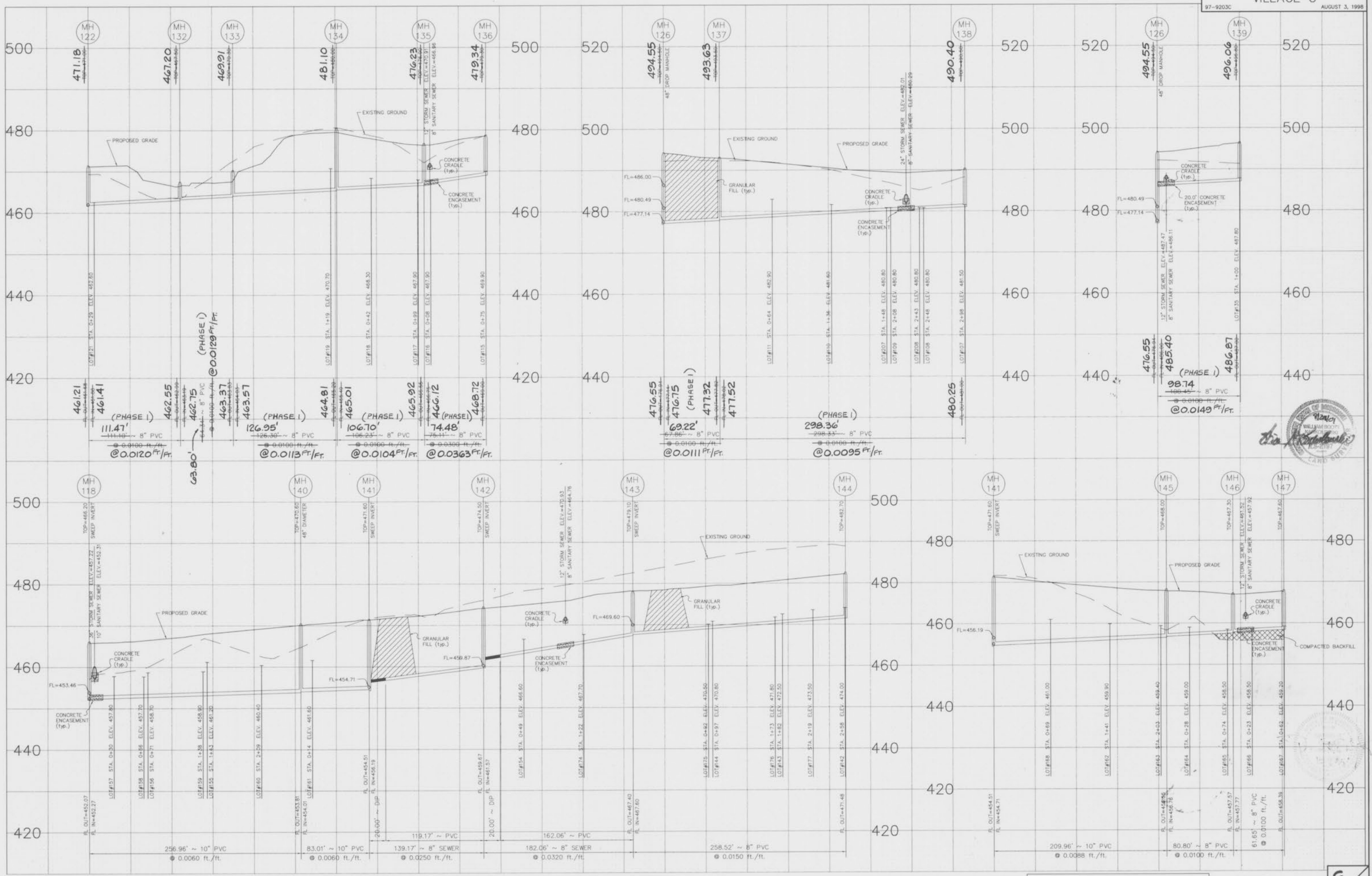
NOTE:  
All sanitary sewer lateral tailstock elevations have been designed for 3.0' basements in homes.

SCALE:  
VERTICAL = 1:10  
HORIZONTAL = 1:50

(REVISED 12-9-99) "AS-BUILTS ADDED AUGUST, 1999"

5  
8

\\saw1d-cv-1\dwg\970303\970303c.dwg Tue Jun 23 07:24:07 1999 TMC



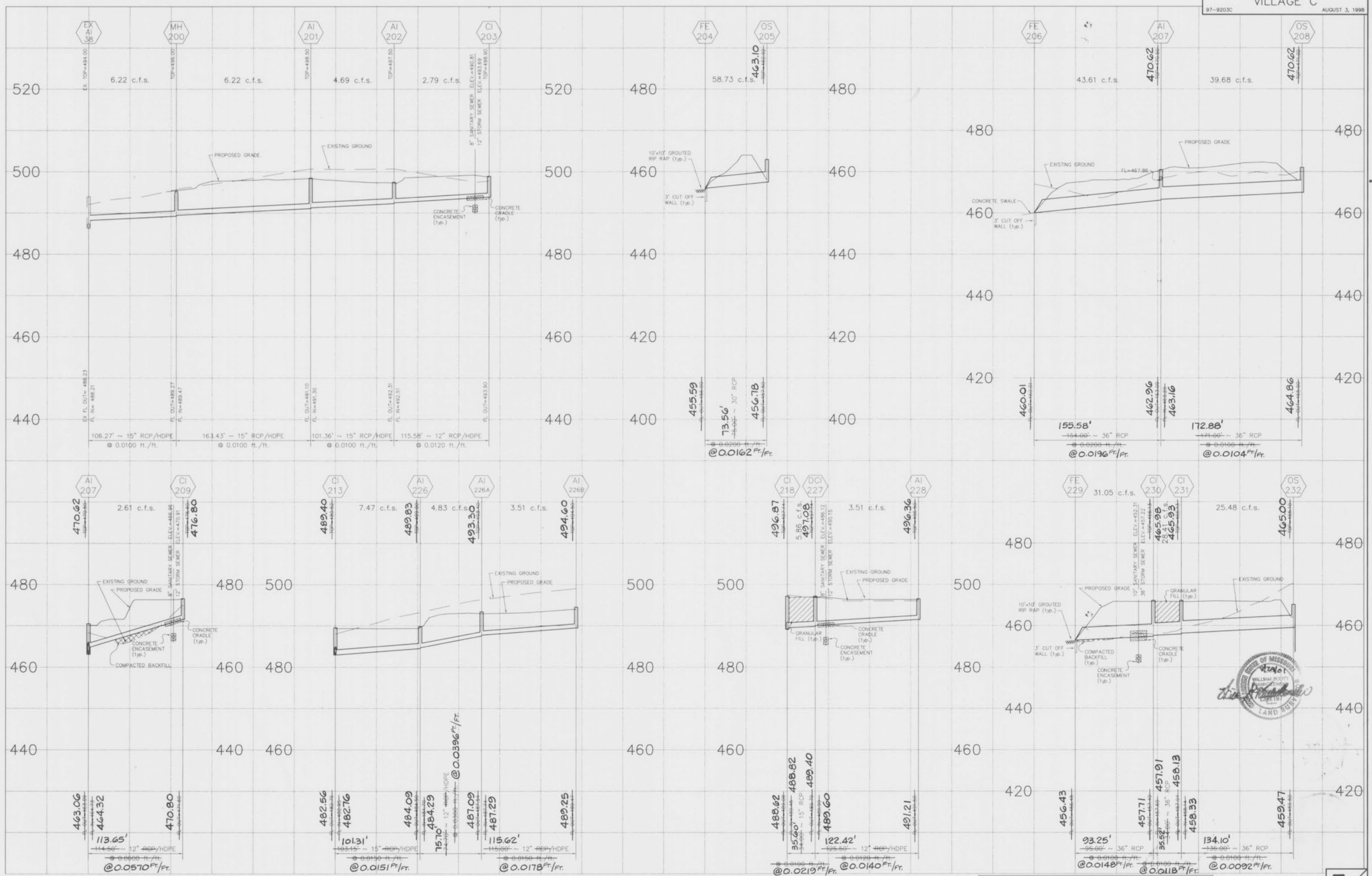
(REVISED 12-2-92) "AS-BUILTS ADDED AUGUST, 1999"

NOTE:  
 All sanitary sewer lateral tailstack elevations have been designed for 9.0' basements in homes.

SCALE:  
 VERTICAL = 1:10  
 HORIZONTAL = 1:50

6  
 8

\\sra\id-drive\lwg\9000p\lwg13013con.dwg Tue Jun 22 07:24:20 1999 TMC

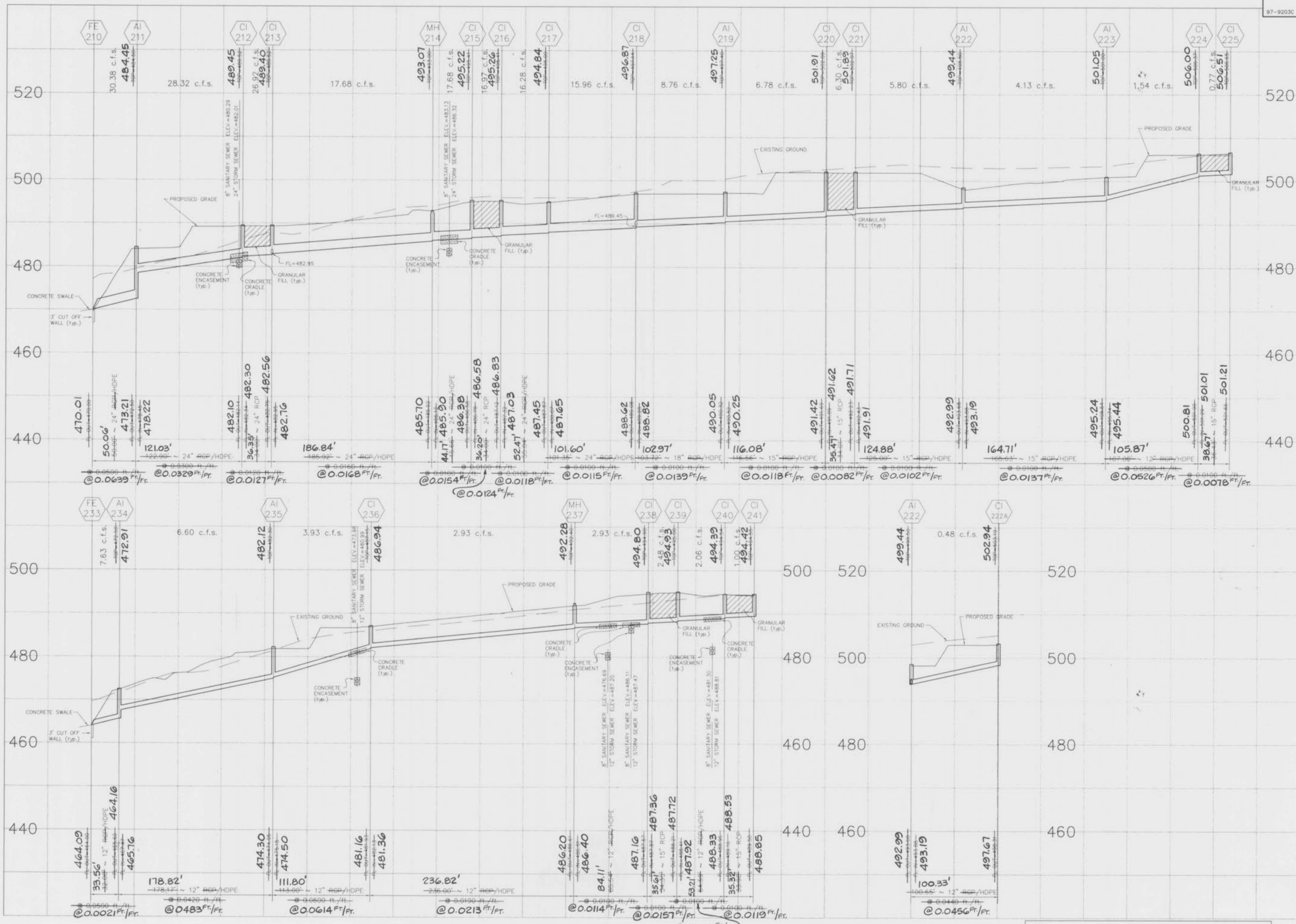


(REVISED 12-9-99) "AS-BUILTS ADDED AUGUST, 1999"

NOTE:  
IF CONTRACTOR/DEVELOPER USES ALTERNATIVE HDPE PIPE,  
ALL SEWER CROSSINGS SHALL BE CONCRETE ENCASED.  
ALL FLARED END SECTIONS AND INLET STRUCTURES WILL BE CONCRETE.

SCALE:  
VERTICAL = 1:10  
HORIZONTAL = 1:50

\\saw10-dp-tr\w\proj\970000\us\9203c-con.dwg Tue Jun 22 07:23:35 1999 TMC



(REVISED 12-2-99) "AS-BUILTS ADDED AUGUST, 1999"

NOTE:  
 IF CONTRACTOR/DEVELOPER USES ALTERNATIVE HDPE PIPE,  
 ALL SEWER CROSSINGS SHALL BE CONCRETE ENCASED.  
 ALL FLARED END SECTIONS AND INLET STRUCTURES WILL BE CONCRETE.

SCALE:  
 VERTICAL = 1:10  
 HORIZONTAL = 1:50

8  
8

\\ba\g-drive\dwg\9000PLUS\9203C.dwg Thu Oct 15 08:03:21 1998 STATION 24 1M

