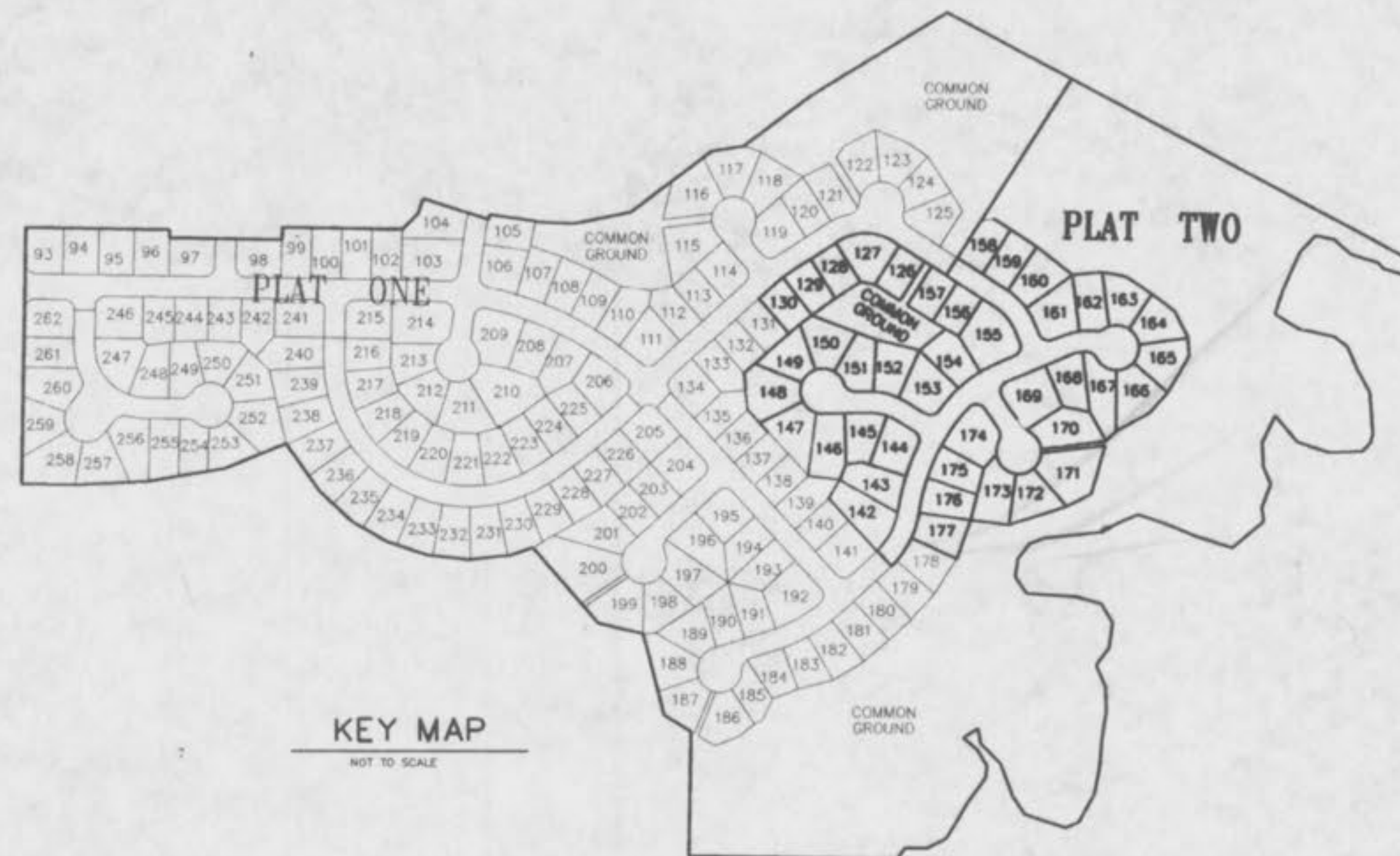


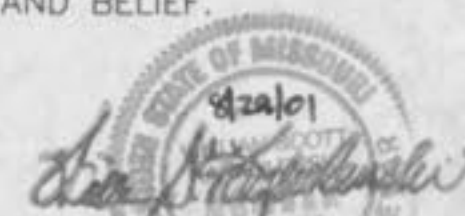
"SANITARY AND STORM SEWER AS-BUILTS"
THE CROSSINGS
VILLAGE C
 (PLAT TWO)

A TRACT OF LAND BEING PART OF
 SECTION 19 AND SECTION 30, TOWNSHIP 47 NORTH, RANGE 3 EAST,
 OF THE FIFTH PRINCIPAL MERIDIAN,
 ST. CHARLES COUNTY, MISSOURI



KEY MAP
 NOT TO SCALE

THIS IS TO CERTIFY THAT WE HAVE DURING THE MONTH OF MAY, 2001,
 BY ORDER OF T. R. HUGHES, INC. EXECUTED AN AS-BUILT SURVEY OF THE
 SANITARY AND STORM SEWERS, FOR "THE CROSSINGS VILLAGE C PLAT TWO"
 A SUBDIVISION ACCORDING TO THE PLAT THEREOF RECORDED IN
 PLAT BOOK 37 PAGES 247-248 OF THE ST. CHARLES COUNTY RECORDS.
 THE SANITARY LATERALS IF ANY WERE TAKEN FROM INFORMATION
 SUPPLIED TO BAX ENGINEERING BY THE CONTRACTOR, THEREFORE THEIR
 LOCATION IS ASSUMED APPROXIMATE. ALL SEWERS SHOWN LIE WITHIN THE
 EASEMENTS AS SHOWN ON SAID SUBDIVISION PLAT UNLESS OTHERWISE NOTED.
 THE RESULTS OF THIS AS-BUILT SURVEY ARE SHOWN ON THIS PLAT TO THE
 BEST OF MY KNOWLEDGE AND BELIEF.



BAX ENGINEERING CO., INC.
 WILLIAM S. KANKOLENSKI
 MO P.L.S. #2197

BENCHMARK
U.S.G.S.

Chiseled L on top of wingwall in northeast
 corner of Old Highway 70 bridge over Belleau Creek.
 Elev. = 456.02

SITE

Cross of the centerline intersection of Vantage
 Pass and Kingston Crossing in The Crossings
 Village B.
 Elev. = 497.69

T.R. HUGHES, INC.
 239 FOX HILL ROAD
 ST. CHARLES, MO. 63301
 (314) 940-9300

PREPARED FOR:

DISCLAIMER OF RESPONSIBILITY
 I hereby certify that the documents intended
 to be authorized by my seal are correct to
 the best of my knowledge and belief, and I
 assume no responsibility for any errors or
 omissions, Reports or other documents or
 instruments relating to or intended to be used
 for any part or parts of the architectural or
 engineering project or survey.

Copyright 1998
 Bax Engineering Company, Inc.
 All Rights Reserved

REVISIONS

NO.	DATE	DESCRIPTION

SHEET INDEX

- 1 OF 8 COVER SHEET
- 2 & 3 OF 8 SITE PLAN
- 4-5 OF 8 SANITARY SEWER PROFILES
- 6-8 OF 8 STORM SEWER PROFILES



1052 South Cloverleaf Drive
 St. Peters, MO. 63378-6445
 314-928-5552
 FAX 928-1718

MAY 10, 2001
 DATE
 97-9203C
 PROJECT NUMBER
 1 OF 8
 SHEET OF
 9203CCOVASB2
 FILE NAME
 BGC WSK
 DRAWN CHECKED



E:\New\99000p\1019203c.asd.dwg Tue May 15 09:02:14 2001 STA 19 BC

MATCHLINE SEE SHEET 3

AS-BUILTS ADDED MAY, 2001

Underground utilities have been plotted from available information and therefore their locations shall be considered approximate only. The verification of the location of all underground utilities, either shown or not shown on these plans shall be the responsibility of the contractor, and shall be located prior to any grading or construction of the improvements.



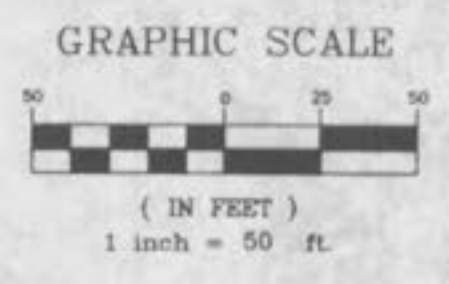
MATCHLINE SEE SHEET 2



COMMON GROUND

COMMON GROUND

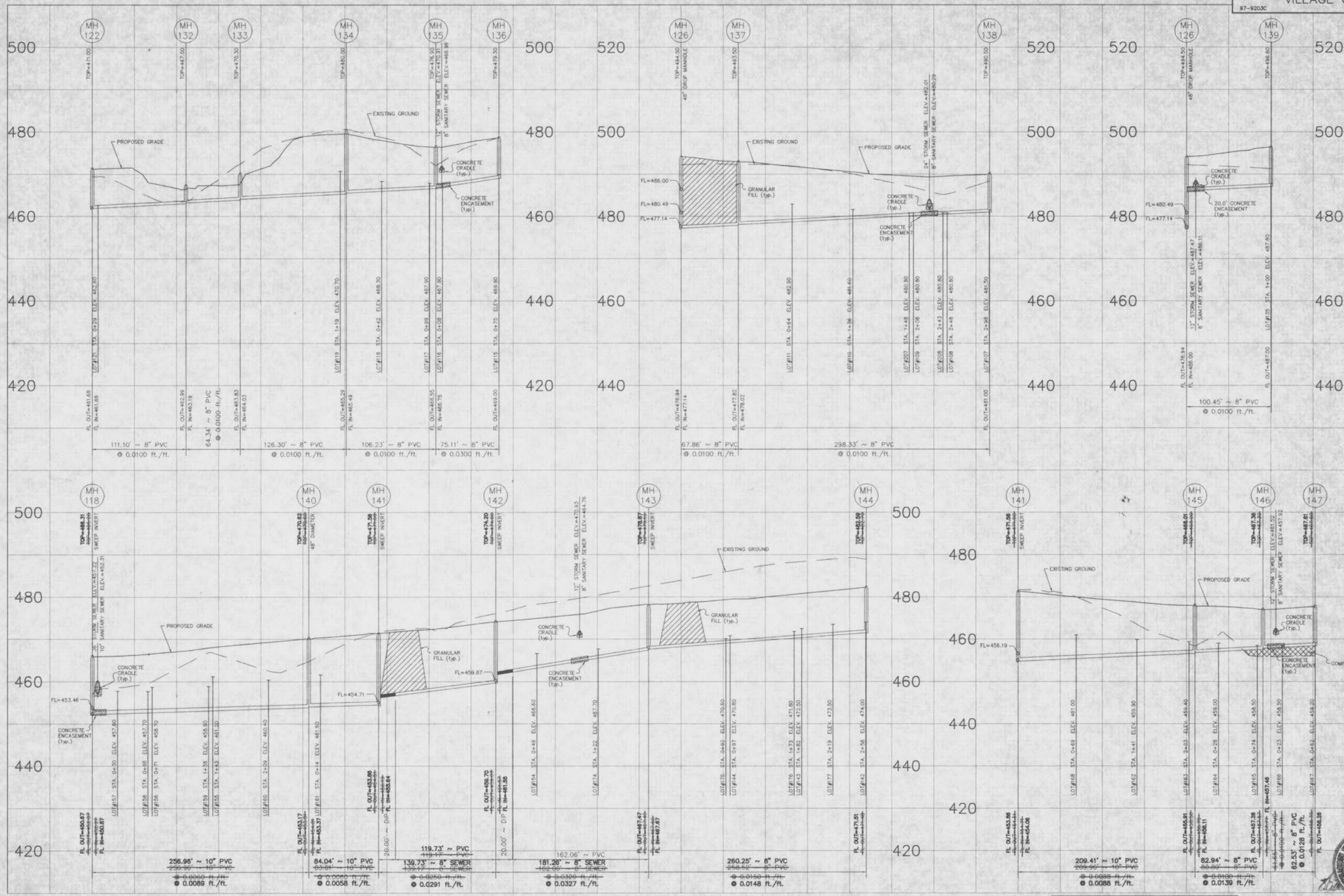
COMMON GROUND
THE CROSSINGS
VILLAGE D



AS-BUILTS ADDED MAY, 2001

Underground utilities have been plotted from available information and therefore their locations shall be considered approximate only. The verification of the location of all underground utilities, either shown or not shown on these plans shall be the responsibility of the contractor, and shall be located prior to any grading or construction of the improvements.

E:\img\3000p\301\9203c\9203c.dwg Tue May 15 09:00:56 2001 STA 18 BC



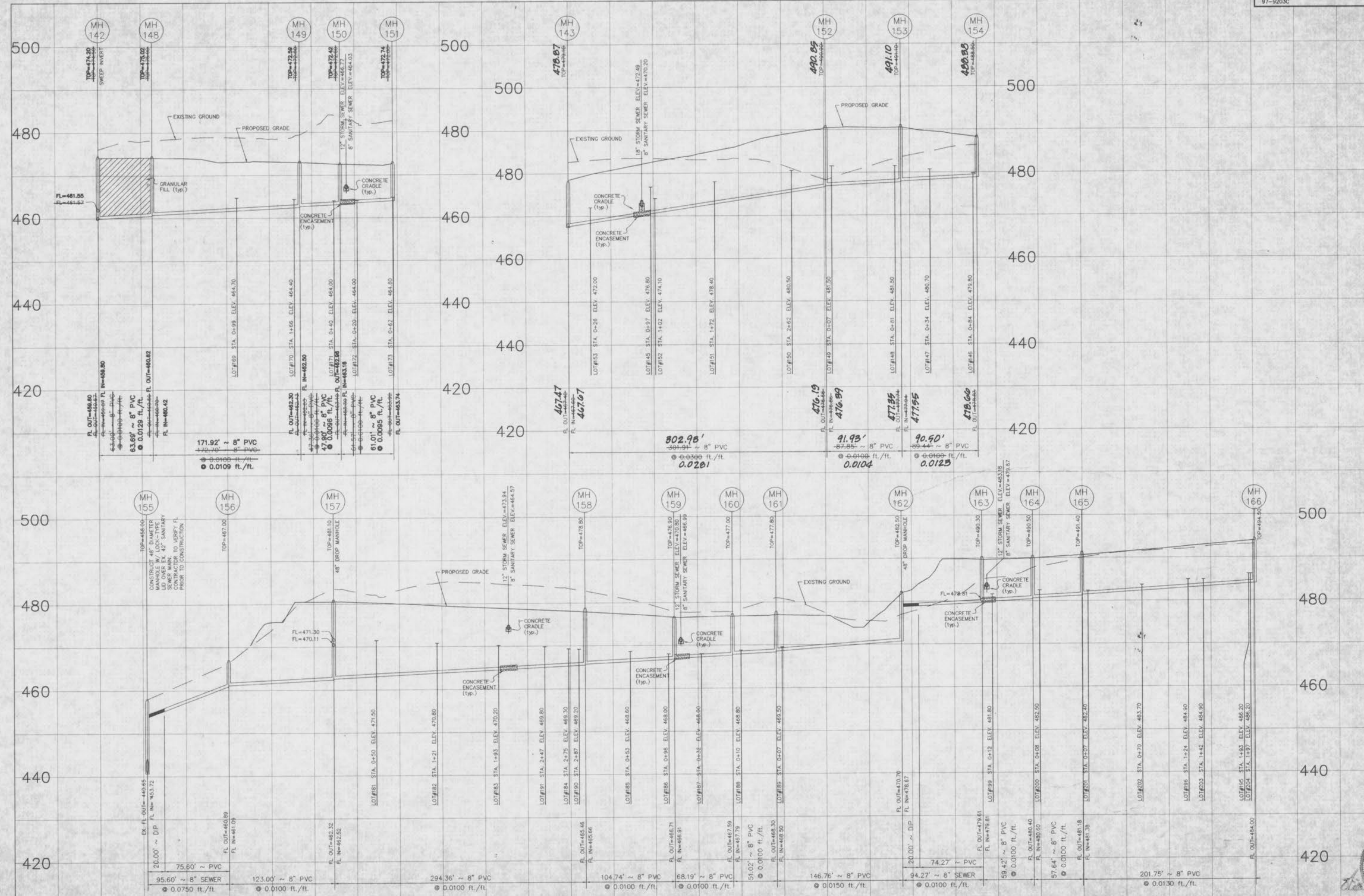
AS-BUILTS ADDED MAY, 2001

NOTE:
 All sanitary sewer lateral tailstake elevations have been designed for 9.0' basements in homes.

SCALE:
 VERTICAL = 1:10
 HORIZONTAL = 1:50



E:\Users\13000p\13003\cadd\day_1.mxd May 15 10:24:46 2001 STA. 1B BC



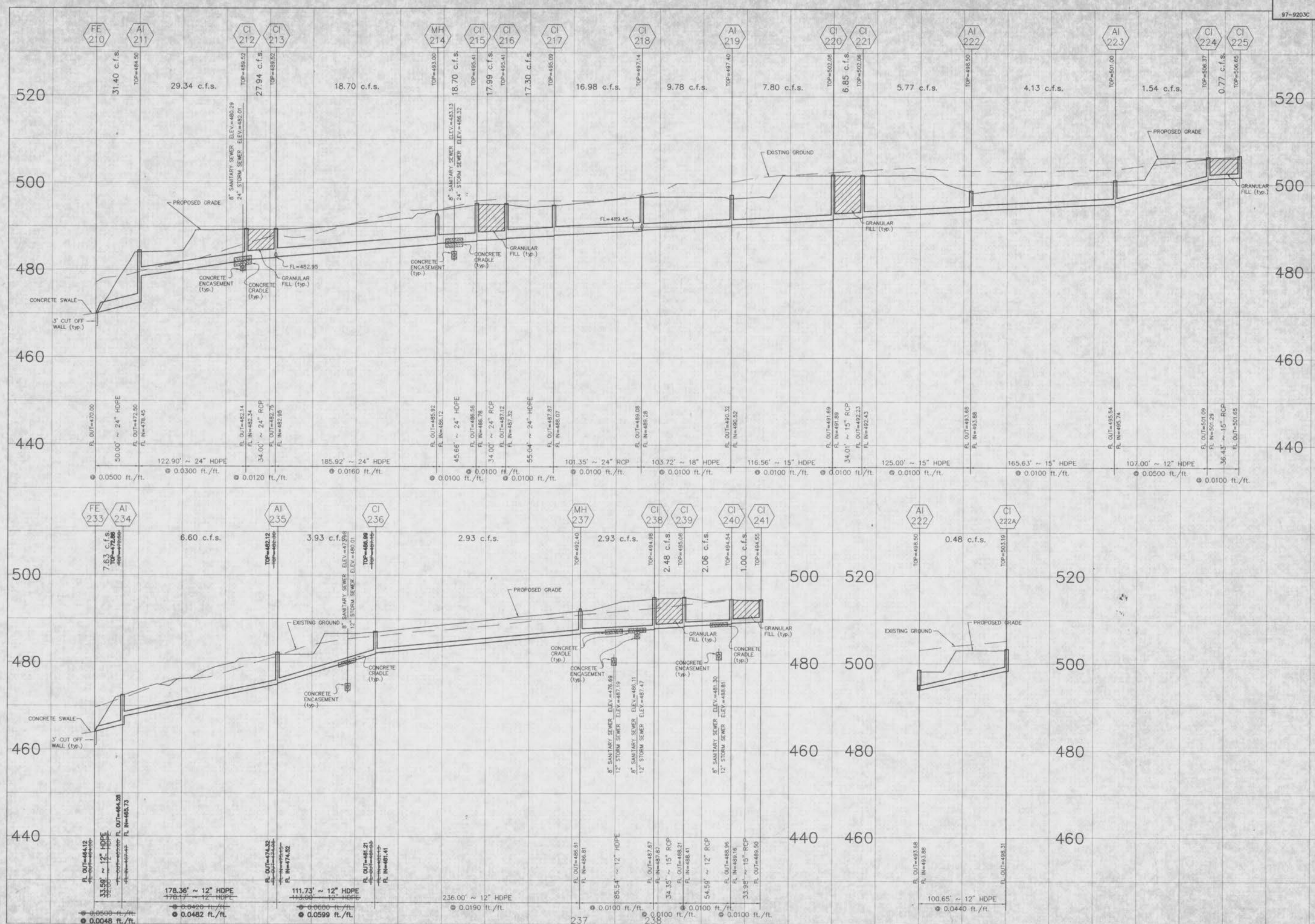
REVISED AUGUST 17, 2001
 AS-BUILTS ADDED MAY, 2001

NOTE:
 All sanitary sewer lateral takeoff elevations have been designed for 9.0' basements in homes.

SCALE:
 VERTICAL = 1:10
 HORIZONTAL = 1:50



E:\dwg\9000p\lva\9203c\asb.dwg Tue May 15 10:25:13 2001 STA 18 BC



AS-BULTS ADDED MAY, 2001

NOTE:
 IF CONTRACTOR/DEVELOPER USES ALTERNATIVE HDPE PIPE,
 ALL SEWER CROSSINGS SHALL BE CONCRETE ENCASED.
 ALL FLARED END SECTIONS AND INLET STRUCTURES WILL BE CONCRETE.

SCALE:
 VERTICAL = 1:10
 HORIZONTAL = 1:50

E:\mg\9806p\l\9803\asb.dwg Tue May 15 10:25:52 2001 STA 18.86





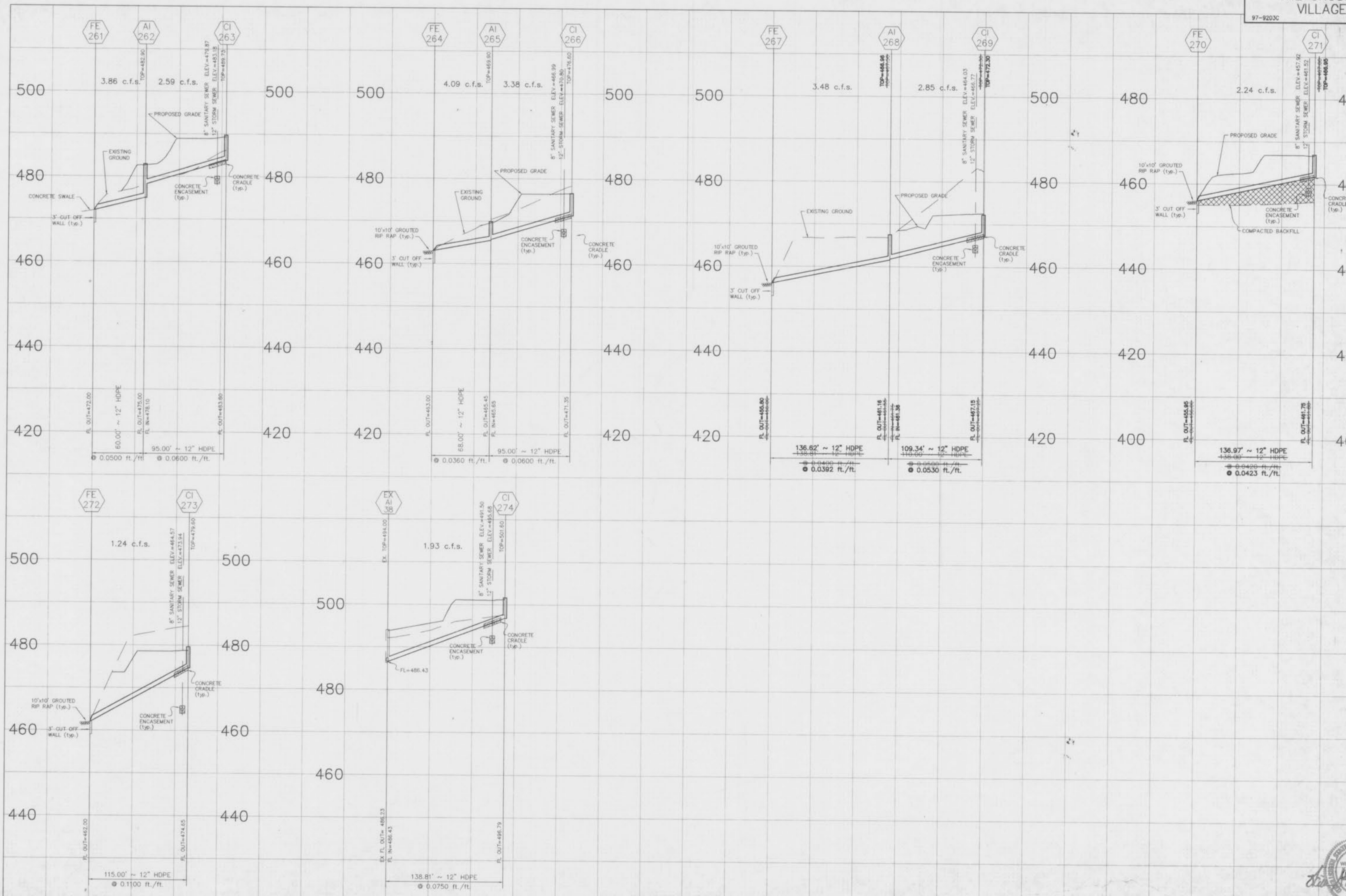
AS-BULTS ADDED MAY, 2001

NOTE:
 IF CONTRACTOR/DEVELOPER USES ALTERNATIVE HDPE PIPE,
 ALL SEWER CROSSINGS SHALL BE CONCRETE ENCASED.
 ALL FLARED END SECTIONS AND INLET STRUCTURES WILL BE CONCRETE.

SCALE:
 VERTICAL = 1:10
 HORIZONTAL = 1:50



E:\user\18000\18000\18000\18000.dwg, Tue May 15 10:26:29 2001, 514, 18 BC



AS-BULTS ADDED MAY, 2001

NOTE:
 IF CONTRACTOR/DEVELOPER USES ALTERNATIVE HDPE PIPE,
 ALL SEWER CROSSINGS SHALL BE CONCRETE ENCASED.
 ALL FLARED END SECTIONS AND INLET STRUCTURES WILL BE CONCRETE.

SCALE:
 VERTICAL = 1:10
 HORIZONTAL = 1:50

E:\mg\90000\1018203c\asb.dwg Tue May 15 10:26:48 2001 STA 18 BC

