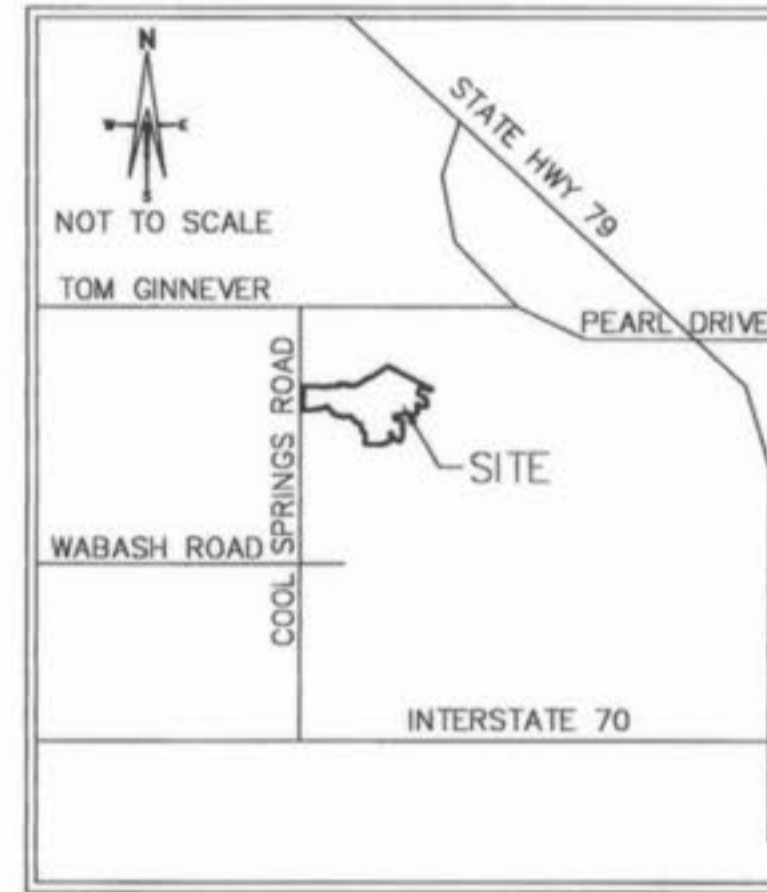


AS-BUILTS FOR THE CROSSING VILLAGE C PLAT THREE

A TRACT OF LAND BEING PART OF SECTION 19 AND
SECTION 30, TOWNSHIP 47 NORTH, RANGE 3 EAST,
ST. CHARLES COUNTY, MISSOURI



LOCATION MAP

DEVELOPMENT NOTES

1. AREA OF TRACT 78.598 ACRES
2. SITE SERVED BY:

CITY OF O'FALLON SEWER DISTRICT
AMERENUE ELECTRIC COMPANY
ST. CHARLES GAS COMPANY
CITY OF O'FALLON WATER
VERISON TELEPHONE COMPANY
FORT ZUMWALT SCHOOL DISTRICT
O'FALLON FIRE PROTECTION DISTRICT

SHEET INDEX

COVER SHEET	1
FLAT PLAN	2-3
SANITARY SEWER PROFILES	4-6
STORM SEWER PROFILES	6-8

PREPARED FOR:

T.R. HUGHES INC.
239 FOX HILL ROAD
ST. CHARLES, MO. 63301

BENCHMARK

U.S.G.S.
Chiseled L on top of wingwall in northeast corner of old
Highway 79 bridge over Belleau Creek.
Elev = 456.02

SITE
Cross at the centerline intersection of Vantage Pass
and Kingston Crossing in the Crossings Village B.
Elev. = 497.69

ENGINEERS AUTHENTICATION

The responsibility for professional engineering liability on this project is hereby limited to the set of plans authenticated by the seal, signature, and date hereunder attached. responsibility is disclaimed for all other engineering plans involved in the project and specifically excludes revisions after this date unless re-authenticated.

THE EXISTING SEWER LENGTHS, SIZES, FLOWLINES, DEPTHS OF STRUCTURES AND SEWERS AND LOCATIONS WITH RESPECT TO EXISTING OR PROPOSED EASEMENTS HAVE BEEN MEASURED. THE RESULTS OF THOSE MEASUREMENTS ARE SHOWN ON THIS SET OF AS-BUILT PLANS. SINCE THE WATER MAIN AND WYE LOCATIONS HAVE BEEN PLOTTED FROM INFORMATION PROVIDED BY THE SEWER CONTRACTOR OR OTHER SOURCES, I DISCLAIM ANY RESPONSIBILITY FOR THAT SPECIFIC INFORMATION.

ST. CHARLES ENGINEERING AND SURVEYING, INC.

Michael Newell Meiners 8/6/02

MICHAEL NEWELL MEINERS
MISSOURI PROFESSIONAL ENGINEER NUMBER E-22483

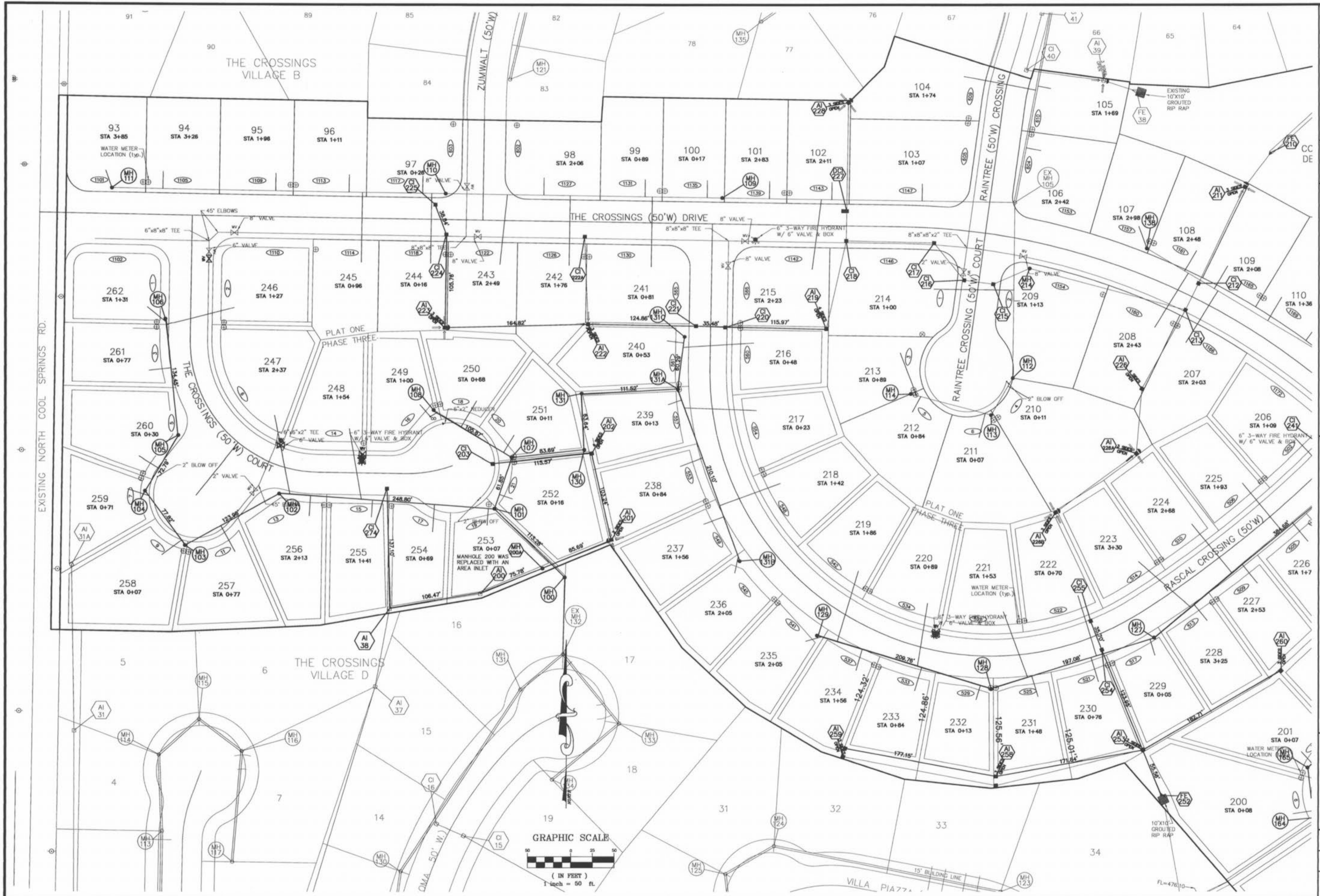
AS-BUILTS FOR THE
CROSSINGS VILLAGE "C"

ST. CHARLES ENGINEERING & SURVEYING, INC.
801 S. FIFTH STREET, SUITE 202
ST. CHARLES, MO 63301
TEL: (636) 947-0607 FAX: (636) 947-2448

S E



ORDER NO.
01-0676
DATE
11/13/01
1 of 8



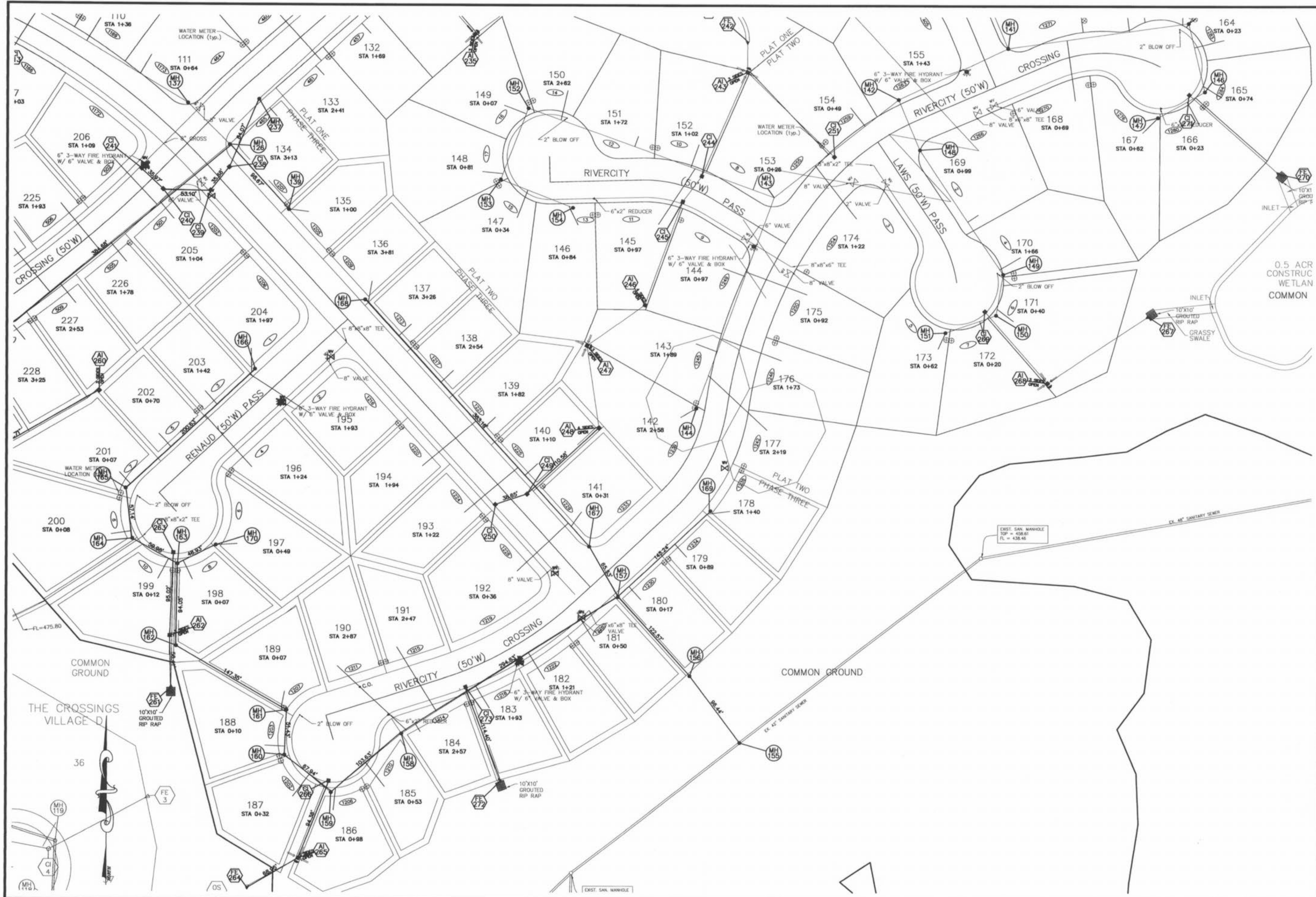
AS-BUILTS FOR THE
CROSSINGS VILLAGE "C"

ST. CHARLES ENGINEERING & SURVEYING, INC.
801 S. FIFTH STREET, SUITE 202
ST. CHARLES, MO 63301
TEL: (636) 947-0607 FAX: (636) 947-2448



ORDER NO.	01-0676
DATE	10/03/01
2 OF 8	

Crossings Vill - 10/12/01 AISC



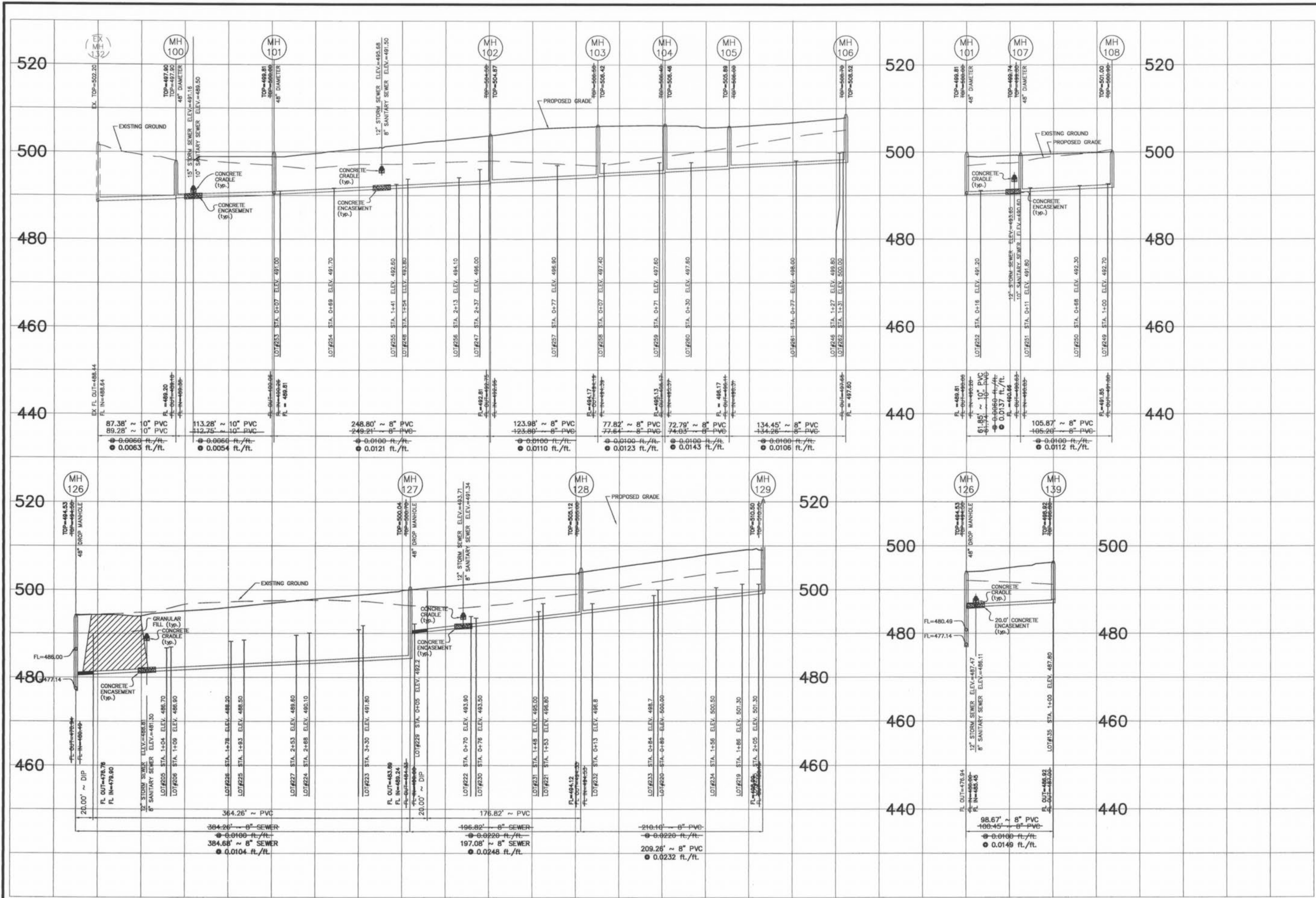
AS-BUILTS FOR THE
CROSSINGS VILLAGE "C"

ST. CHARLES ENGINEERING & SURVEYING, INC.
801 S. FIFTH STREET, SUITE 202
ST. CHARLES, MO 63301
TEL: (636) 947-0607 FAX: (636) 947-2448



ORDER NO.	01-0676
DATE	10/03/01
3 OF 8	

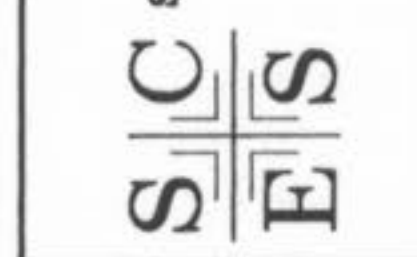
Crossings Vill C App 10/29/01 doc



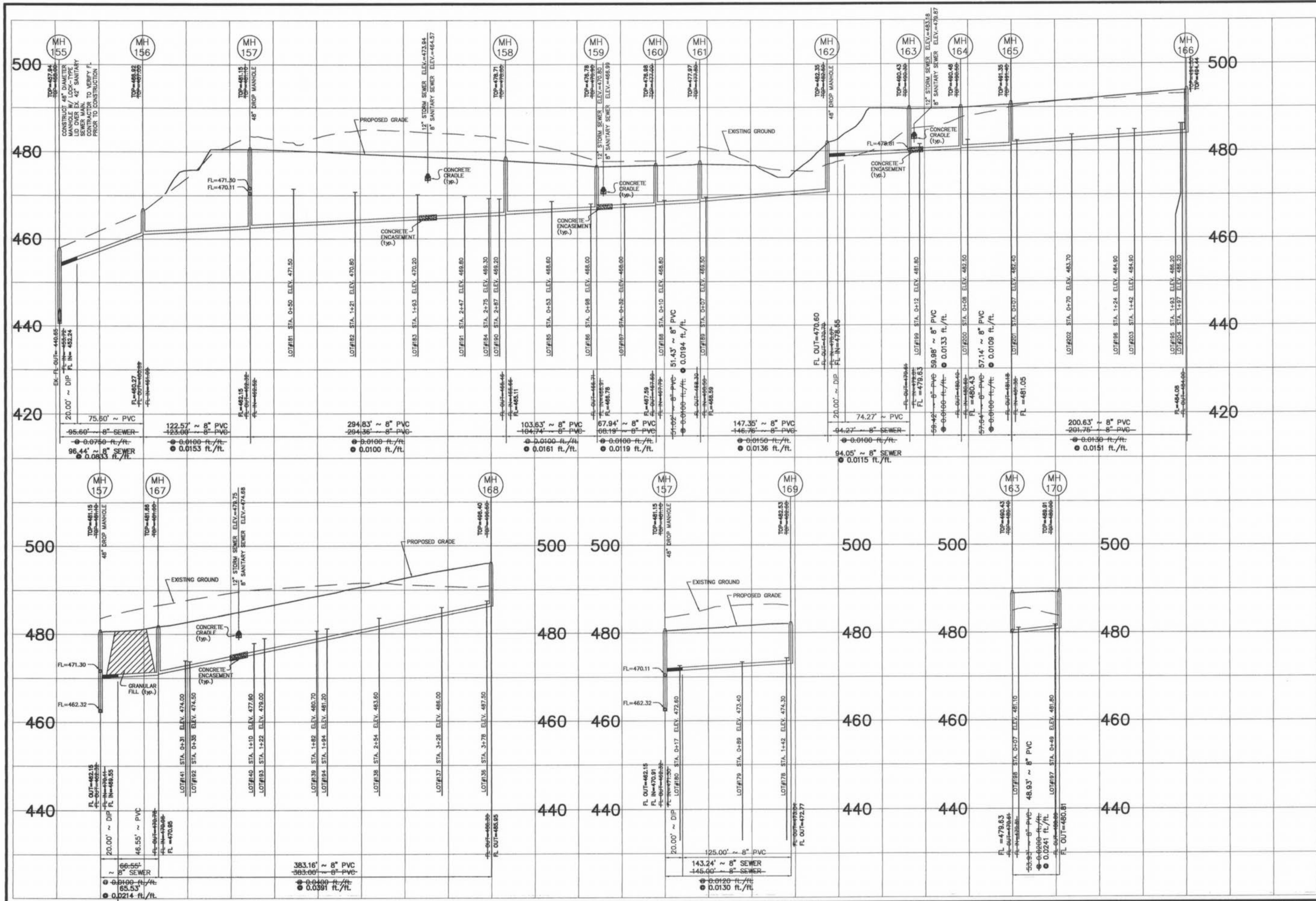
REVISED 4-02 PER CITY COMMENTS

AS-BUILTS FOR
THE CROSSINGS VILLAGE "C"
SANITARY SEWERS

ST. CHARLES ENGINEERING & SURVEYING, INC.
801 S. FIFTH STREET, SUITE 202
ST. CHARLES, MO 63301
TEL: (636) 947-0607 FAX: (636) 947-2448



ORDER NO.
01-0676-01
DATE
11/18/01
4 of 8



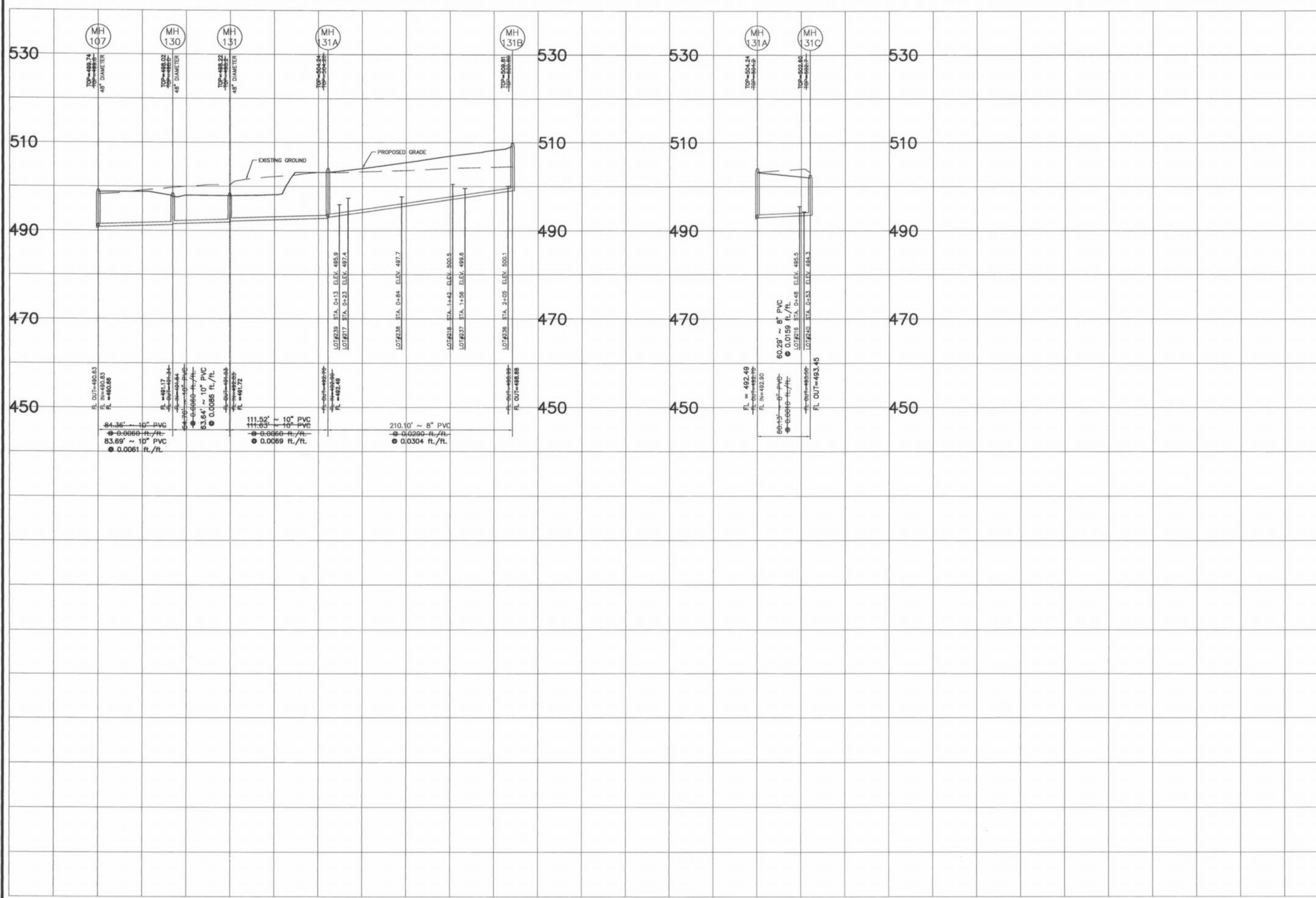
AS-BUILTS FOR
THE CROSSINGS VILLAGE "C"
SANITARY SEWERS

ST. CHARLES ENGINEERING & SURVEYING, INC.
801 S. FIFTH STREET, SUITE 202
ST. CHARLES, MO 63301
TEL: (636) 947-0607 FAX: (636) 947-2448


 STATE OF MISSOURI
 REGISTERED PROFESSIONAL ENGINEER
 MICHAEL NEWELL
 NUMBER 22483
 8/6/02

ORDER NO. 01-0676-01
 DATE 11/18/01
 5 of 8

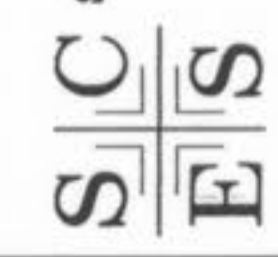
REVISED 4-02 PER CITY COMMENTS



REVISED 4-02 PER CITY COMMENTS

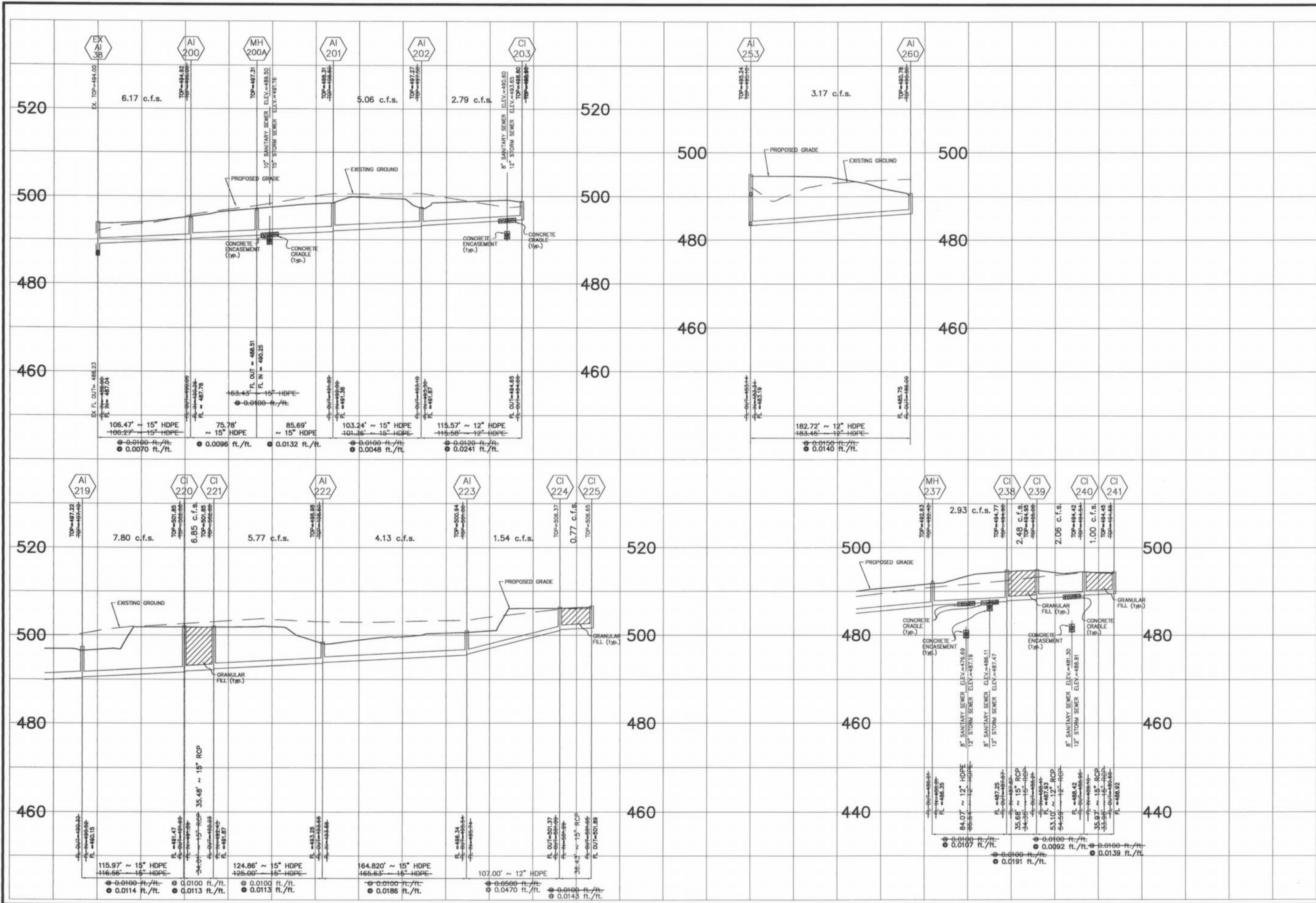
AS-BUILTS FOR
THE CROSSINGS VILLAGE "C"
SANITARY SEWERS

ST. CHARLES ENGINEERING & SURVEYING, INC.
801 S. FIFTH STREET, SUITE 202
ST. CHARLES, MO 63301
TEL: (636) 947-0607 FAX: (636) 947-2448



8/2/02

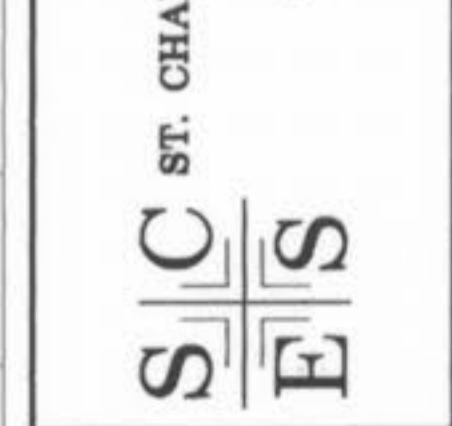
ORDER NO.
01-0676-01
DATE
11/18/01
6 of 8



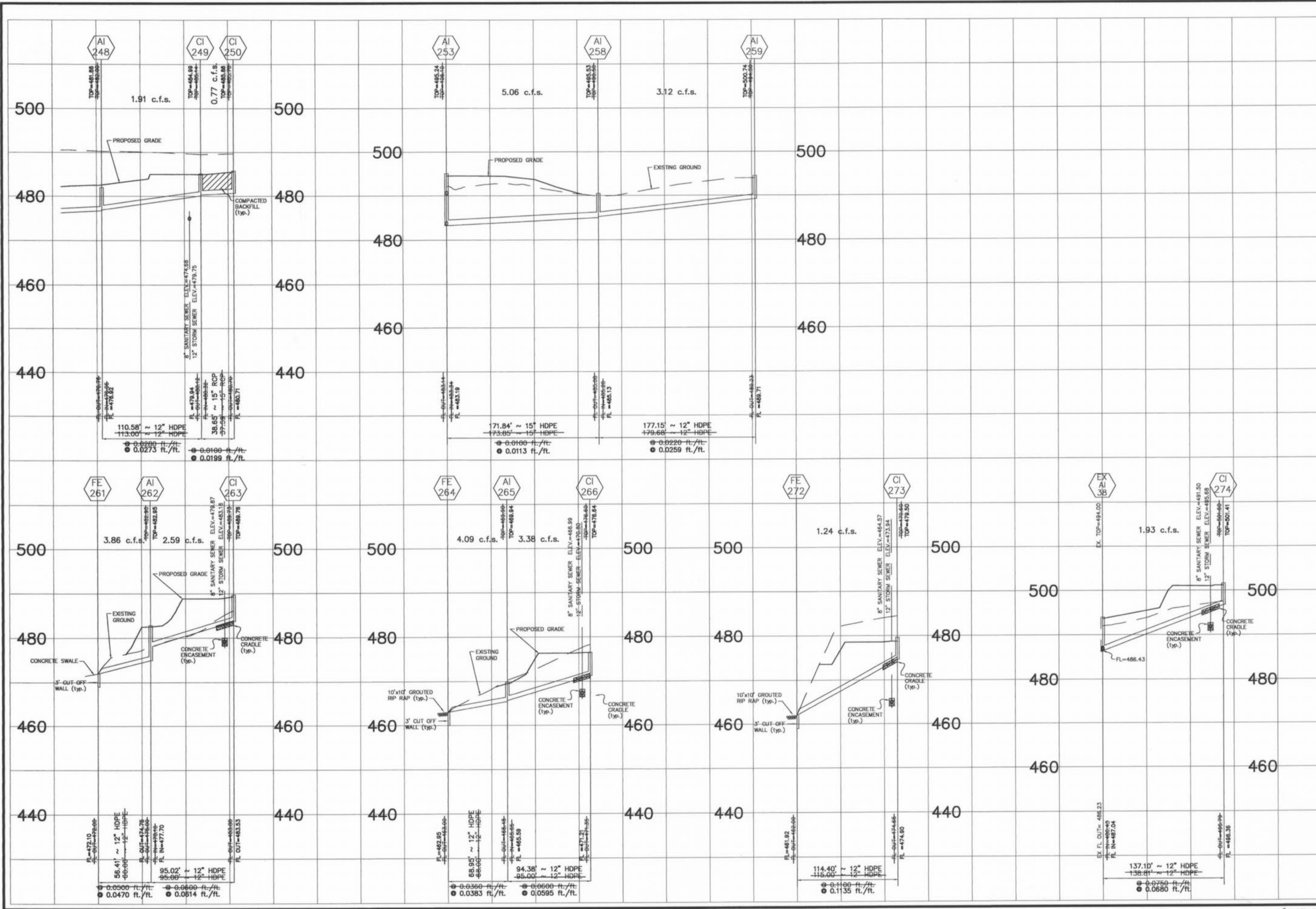
NO.	REVISION	DATE	BY	CHKD.	PER CITY COMMENTS

AS-BUILTS FOR
THE CROSSINGS VILLAGE "C"
STORM SEWERS

ST. CHARLES ENGINEERING & SURVEYING, INC.
801 S. FIFTH STREET, SUITE 202
ST. CHARLES, MO 63301
TEL: (636) 947-0607 FAX: (636) 947-2448



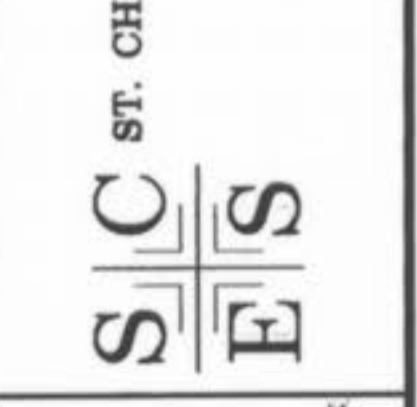
ORDER NO.	01-0676-01
DATE	11/13/01
7 of 8	



NO.	REVISION	DATE	BY	CHKD.	PER CITY COMMENTS
1	REVISED 4-02				

AS-BUILTS FOR
THE CROSSINGS VILLAGE "C"
STORM SEWERS

ST. CHARLES ENGINEERING & SURVEYING, INC.
801 S. FIFTH STREET, SUITE 202
ST. CHARLES, MO 63301
TEL: (636) 947-0607 FAX: (636) 947-2448



ORDER NO.
01-0676-01
DATE
11/18/01
8 of 8