

# A SET OF WATER, SANITARY AND STORM SEWER AS-BUILT PLANS FOR THE CROSSINGS VILLAGE D PHASE TWO

A TRACT OF LAND BEING PART OF SECTION 19 AND SECTION 30, TOWNSHIP 47 NORTH, RANGE 3 EAST, OF THE FIFTH PRINCIPAL MERIDIAN ST. CHARLES COUNTY, MISSOURI



PREPARED FOR:  
**T.R. HUGHES, INC.**  
 3722 MUELLER ROAD  
 ST. CHARLES, MO. 63301  
 (314) 940-9300

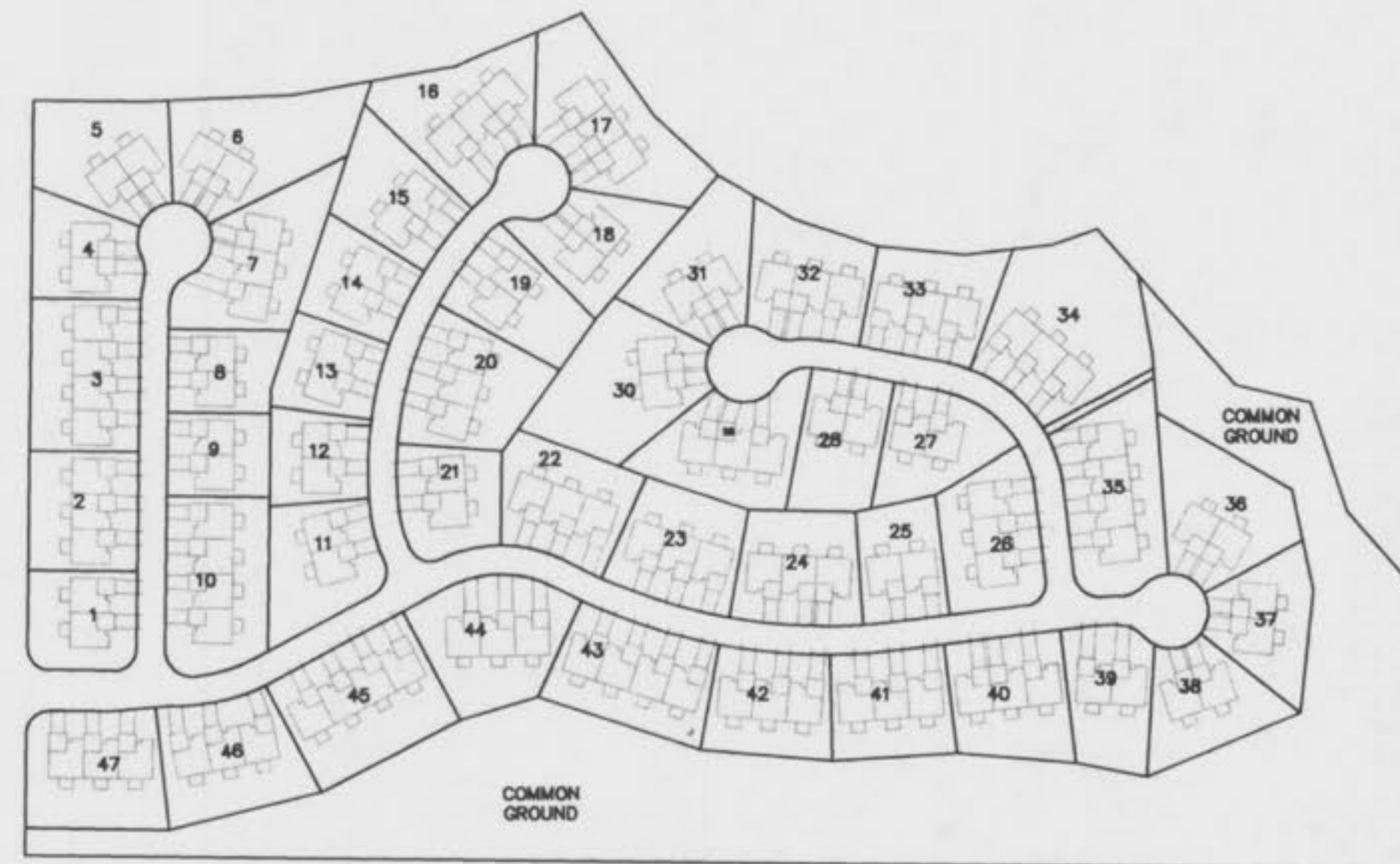
PREPARED FOR:

DISCLAIMER OF RESPONSIBILITY  
 I hereby specify that the documents intended to be authorized by my seal are limited to this sheet, and I hereby disclaim any responsibility for all other drawings, specifications, estimates, reports or other documents or instruments relating to or intended to be used for any part or parts of the architectural or engineering project or survey.

Copyright 1998  
 Bax Engineering Company, Inc.  
 All Rights Reserved.

REVISIONS

7-17-98	O'FALLON REVISION
8-05-98	IN HOUSE REVISION
9-02-98	O'FALLON REVISION



KEY MAP  
 NOT TO SCALE

LEGEND

CL	CURB INLET	⊙	STREET LIGHT
D.C.I.	DOUBLE CURB INLET	—582—	EXISTING CONTOUR
A.I.	AREA INLET	—582—	PROPOSED CONTOUR
M.H.	MANHOLE	S <sub>1/2</sub>	STREET SIGN
F.E.	FLARED END SECTION	—	NO PARKING SIGN
E.P.	END PIPE	W	WATER VALVE
C.P.	CONCRETE PIPE	B.O.	BLOW OFF ASSEMBLY
R.C.P.	REINFORCED CONCRETE PIPE	—	FLOWLINE ELEVATION OF HOUSE CONNECTION
C.M.P.	CORRUGATED METAL PIPE	—	FLOWLINE ELEVATION OF SEWER MANHOLE
C.I.P.	CAST IRON PIPE		
P.V.C.	POLY VINYL CHLORIDE (PLASTIC)		
C.O.	CLEAN OUT		
—	FIRE HYDRANT		
—	STORM SEWER		
—	SANITARY SEWER		

SHEET INDEX

1	COVER SHEET
2	SITE PLAN
3 thru 5	SANITARY SEWER PROFILES
6 thru 7	STORM SEWER PROFILES

AS-BUILTS ADDED JANUARY, 2000

THIS IS TO CERTIFY THAT WE HAVE DURING THE MONTH OF JANUARY, 2000, BY ORDER OF T. R. HUGHES, INC. EXECUTED AN AS-BUILT SURVEY OF THE SANITARY & STORM SEWER AND WATER, FOR "THE CROSSINGS VILLAGE D PHASE TWO". THE SANITARY LATERALS IF ANY WERE TAKEN FROM INFORMATION SUPPLIED TO BAX ENGINEERING BY THE CONTRACTOR, THEREFORE THEIR LOCATION IS ASSUMED APPROXIMATE. ALL SEWERS SHOWN LIE WITHIN THE EASEMENTS AS SHOWN ON SAID SUBDIVISION PLAT UNLESS OTHERWISE NOTED. THE RESULTS OF THIS AS-BUILT SURVEY ARE SHOWN ON THIS PLAT TO THE BEST OF MY KNOWLEDGE AND BELIEF.

WILLIAM SCOTT KANKOLENSKI  
 MISSOURI REGISTERED PROFESSIONAL SURVEYOR  
 No. 13,200  
 BAX ENGINEERING CO., INC.  
 WILLIAM SCOTT KANKOLENSKI  
 MO REG. L.S. #2197



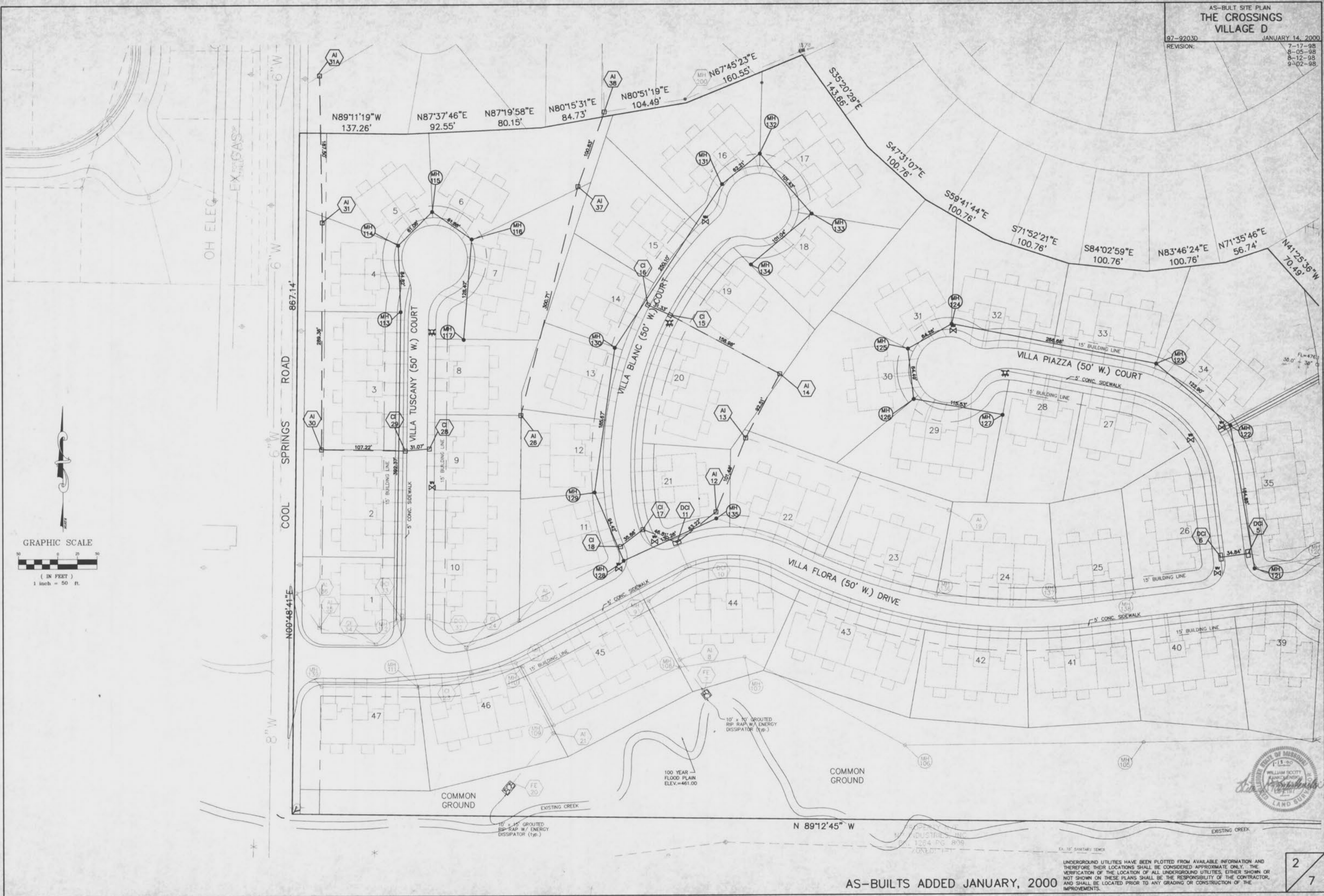
ENGINEERING  
 PLANNING  
 SURVEYING

1052 South Cloverleaf Drive  
 St. Peters, MO. 63376-6445  
 314-928-5552  
 FAX 928-1718

01-14-2000  
 DATE  
 97-9203D  
 PROJECT NUMBER  
 1 of 7  
 SHEET OF  
 9203DASBCOV.DWG  
 FILE NAME  
 BGC WSK  
 DRAWN CHECKED

AS-BUILT SITE PLAN  
**THE CROSSINGS  
 VILLAGE D**

97-9203D JANUARY 14, 2000  
 REVISION: 7-17-98  
 8-05-98  
 8-12-98  
 9-02-98



GRAPHIC SCALE  
 ( IN FEET )  
 1 inch = 50 ft.

AS-BUILTS ADDED JANUARY, 2000

UNDERGROUND UTILITIES HAVE BEEN PLOTTED FROM AVAILABLE INFORMATION AND THEREFORE THEIR LOCATIONS SHALL BE CONSIDERED APPROXIMATE ONLY. THE VERIFICATION OF THE LOCATION OF ALL UNDERGROUND UTILITIES, EITHER SHOWN OR NOT SHOWN ON THESE PLANS SHALL BE THE RESPONSIBILITY OF THE CONTRACTOR, AND SHALL BE LOCATED PRIOR TO ANY GRADING OR CONSTRUCTION OF THE IMPROVEMENTS.



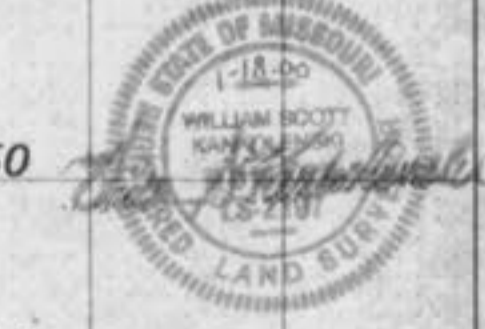
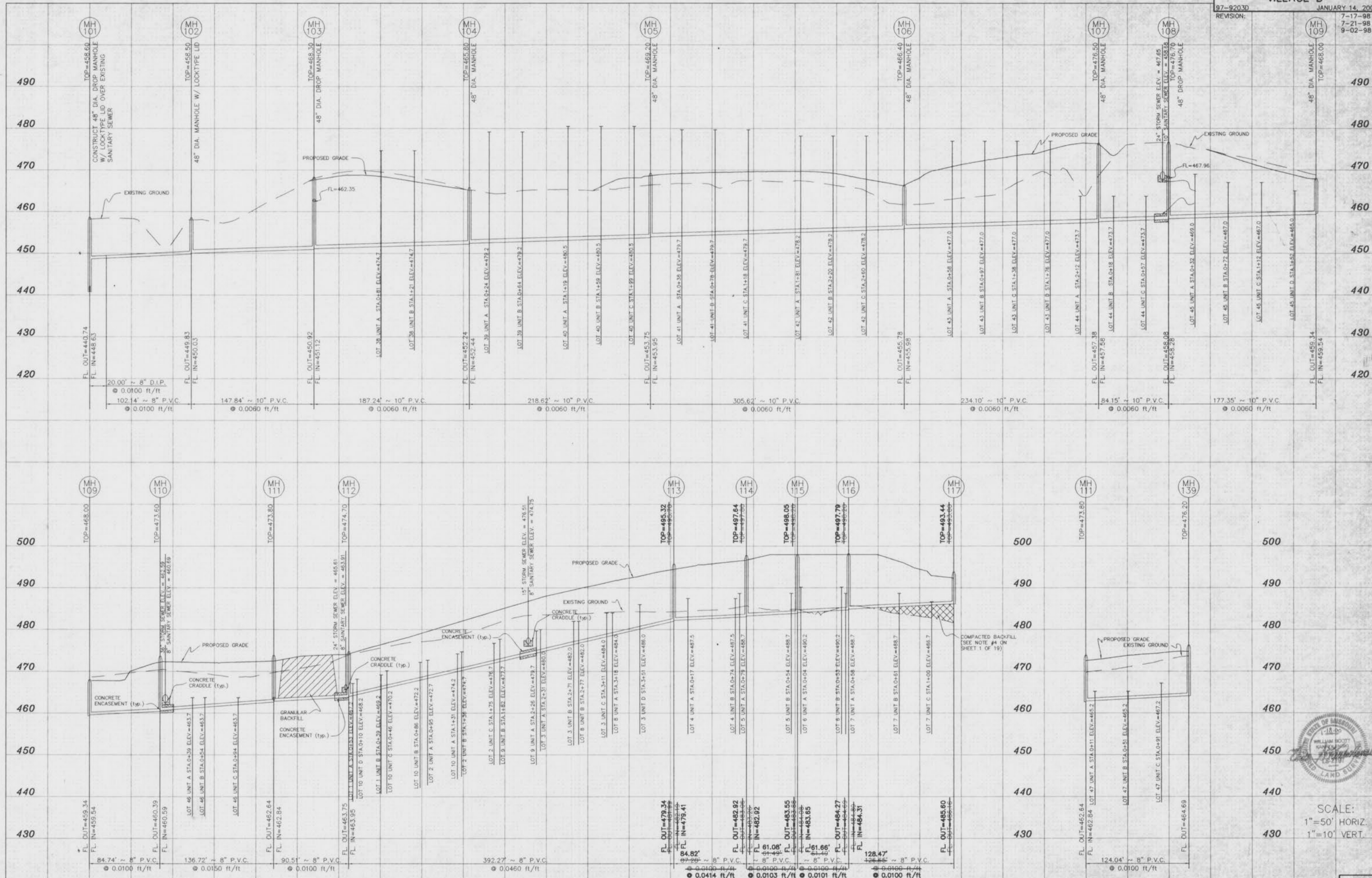
2  
 7

\\ba\d-01-110\dwg\50000\jw\50030\asb.dwg Fri Jan 14 11:31:11 2000 BSC

AS-BUILT SANITARY PROFILES  
THE CROSSINGS  
VILLAGE D

97-920.3D JANUARY 14, 2000

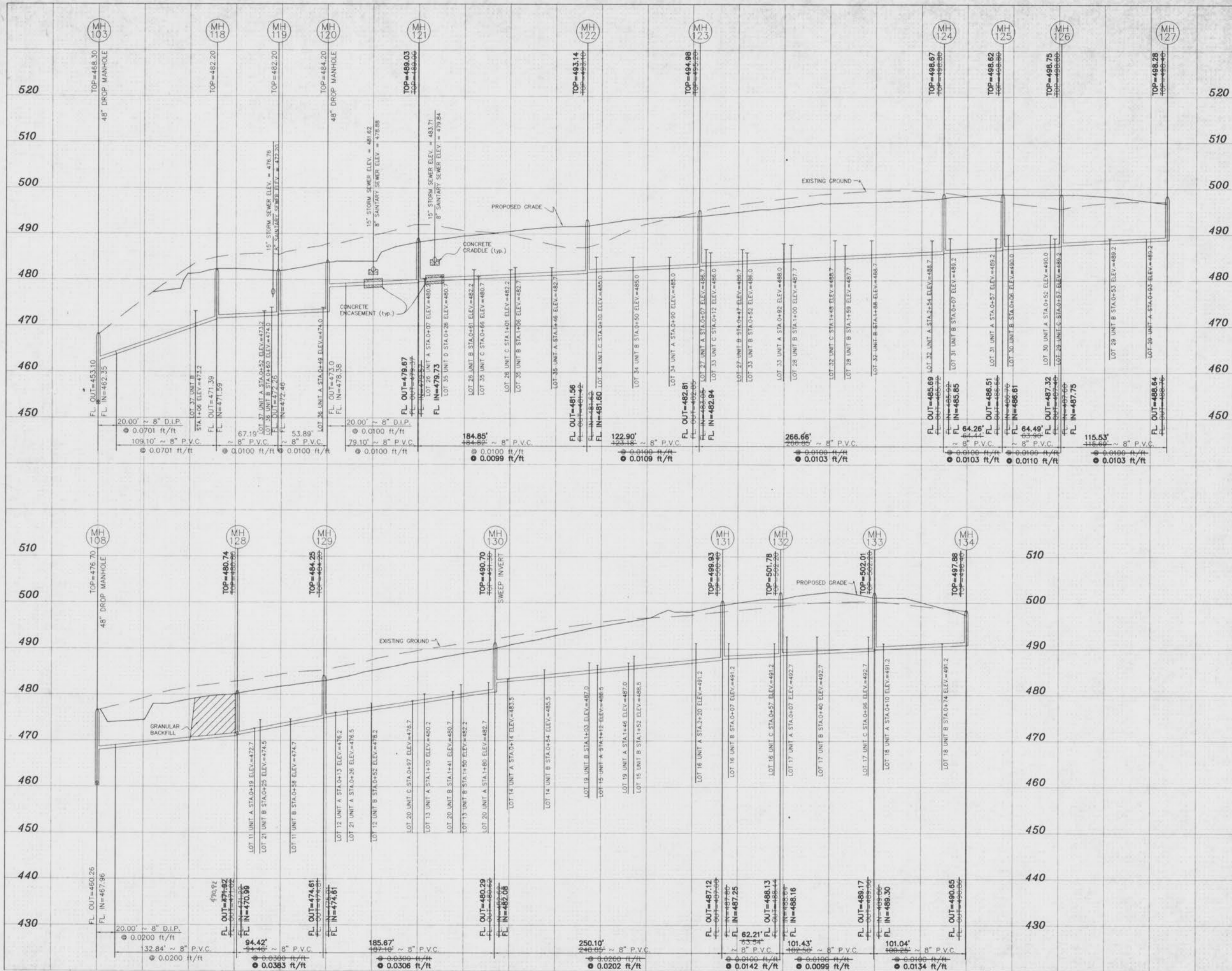
REVISION: 7-17-98  
7-21-98  
9-02-98



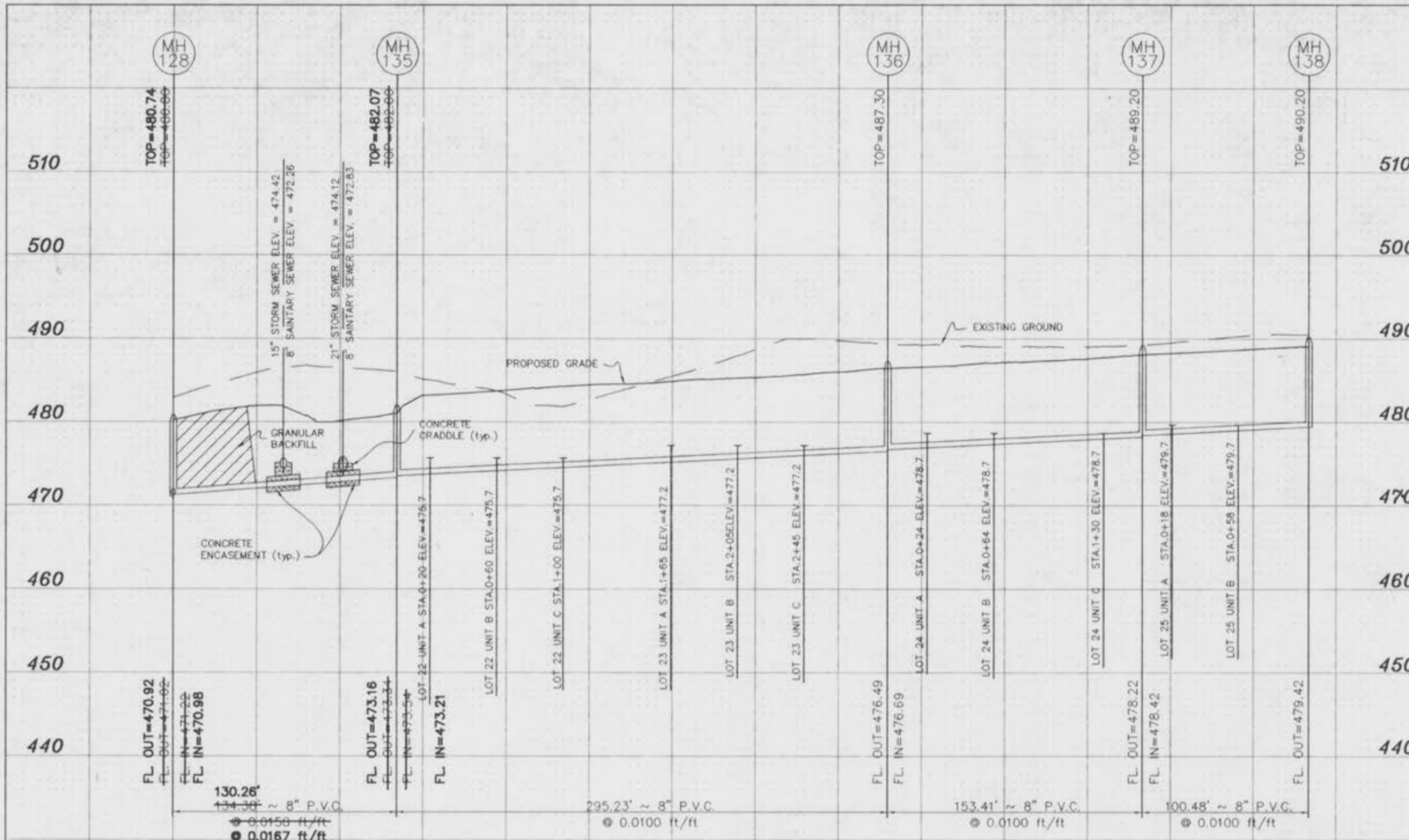
SCALE:  
1"=50' HORIZ.  
1"=10' VERT.

\\barcar\ltd\p\1st\97\920\3d\97-920.3d.dwg Mer Jan 17 08 27:03 2000 BSC

AS-BUILTS ADDED JANUARY, 2000 **3** / **7**

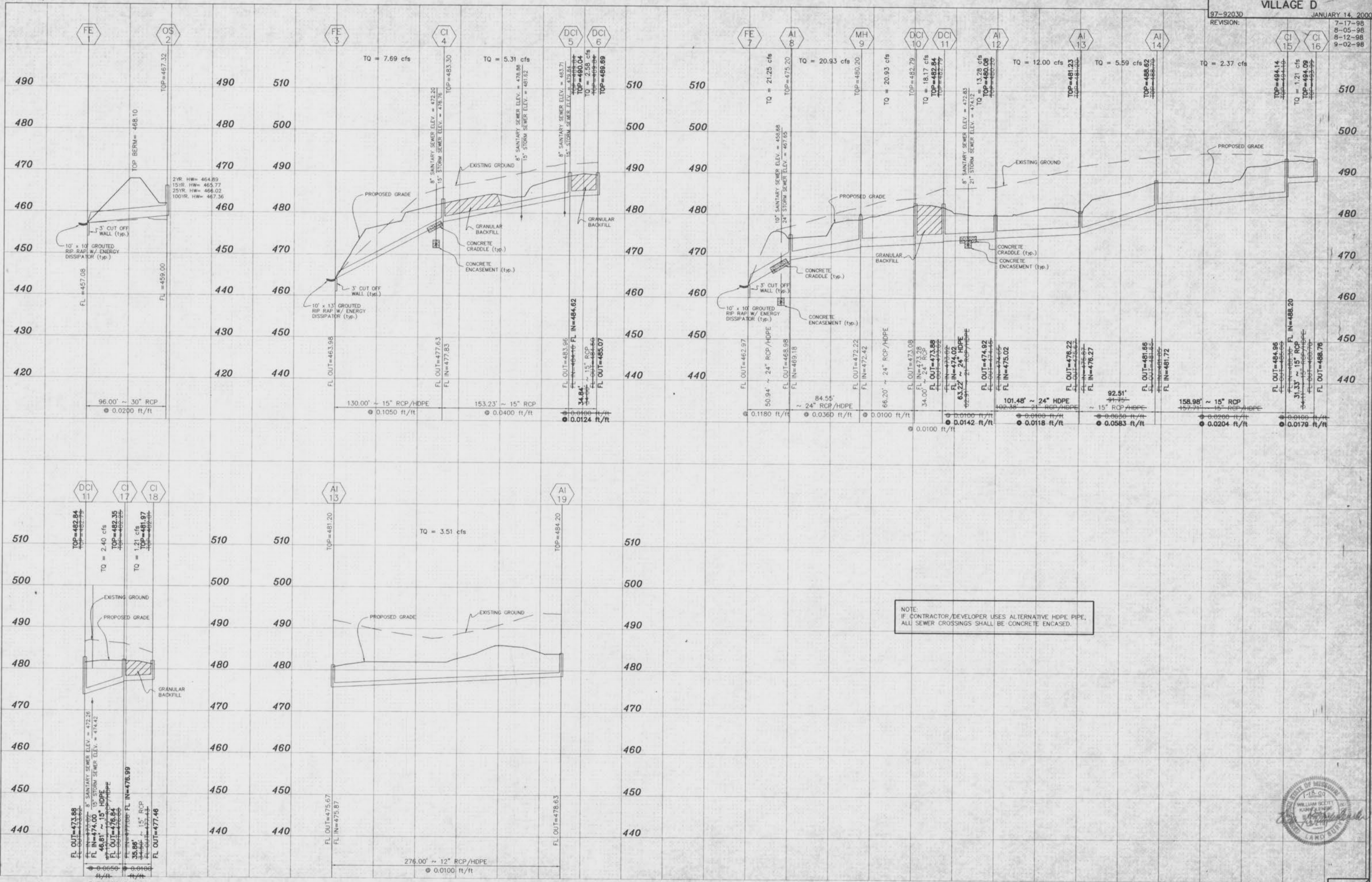


SCALE:  
 1"=50' HORIZ.  
 1"=10' VERT.



SCALE:  
 1"=50' HORIZ.  
 1"=10' VERT.

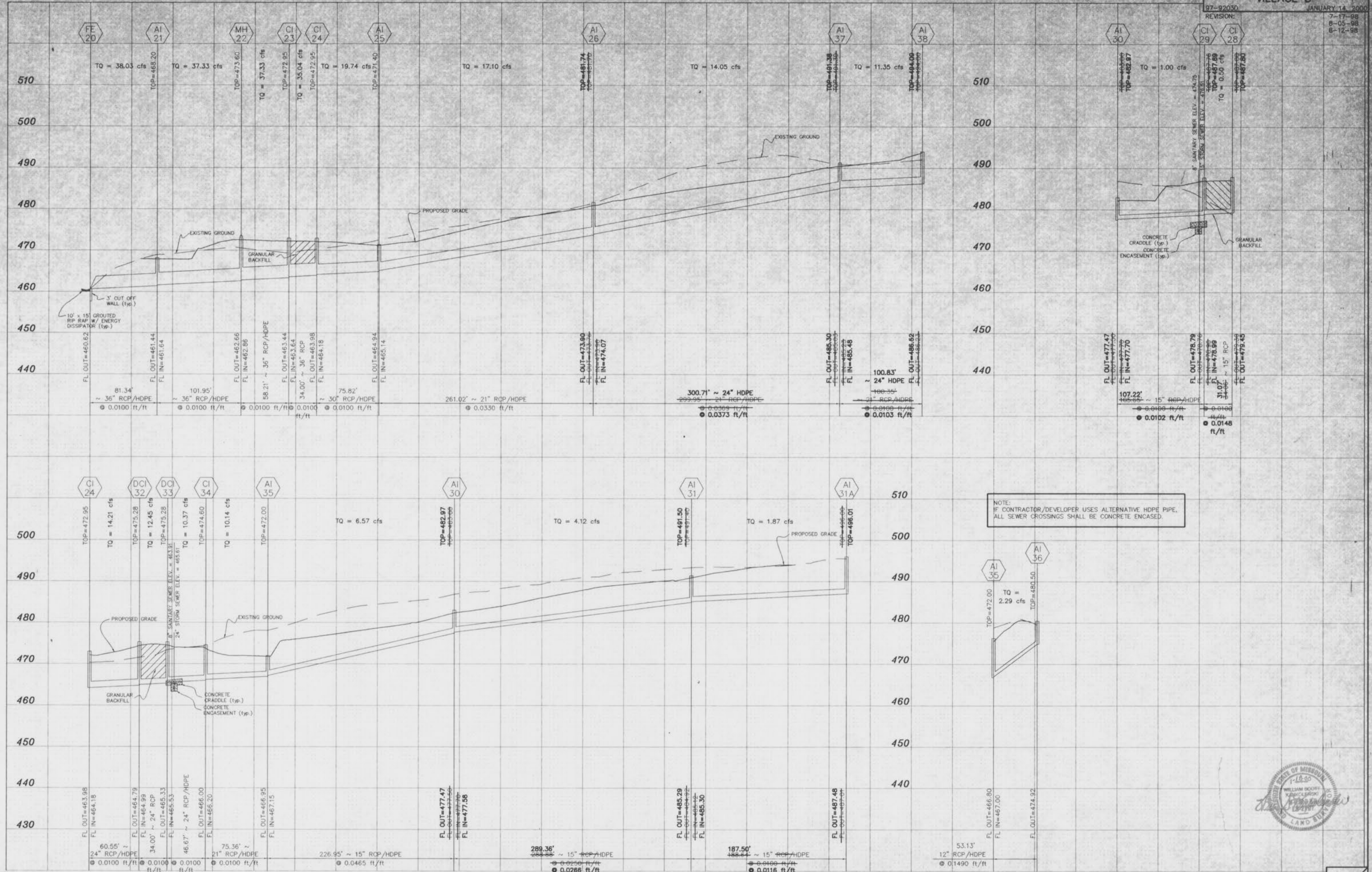
97-92030  
REVISION: JANUARY 14, 2000  
7-17-98  
8-05-98  
8-12-98  
9-02-98



NOTE:  
IF CONTRACTOR/DEVELOPER USES ALTERNATIVE HDPE PIPE,  
ALL SEWER CROSSINGS SHALL BE CONCRETE ENCASED.



\\bay01-cv-1ve\DKG\9000PL\US\92030\453.dwg F71 Jan 14 11:08:58 2000 BGC



NOTE:  
IF CONTRACTOR/DEVELOPER USES ALTERNATIVE HDPE PIPE,  
ALL SEWER CROSSINGS SHALL BE CONCRETE ENCASED.



\\BNA-G-01\live\DWG\92030\92030.dwg F:\1 Jan 14 11:05:44 2000 BSC