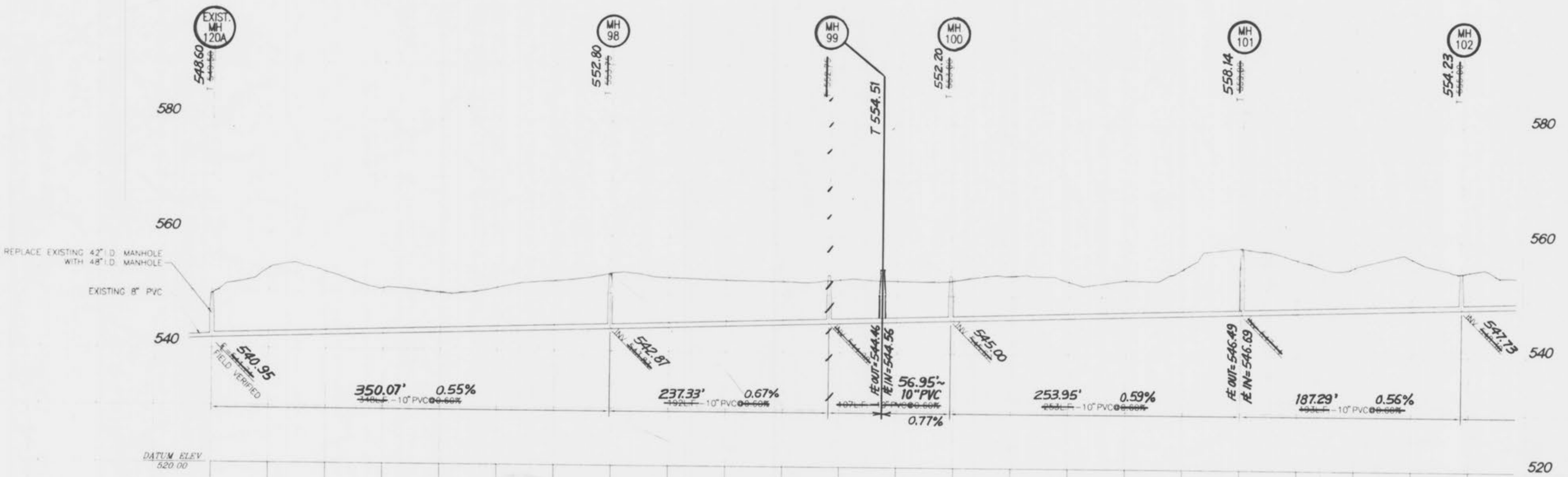


WINGHAVEN PHASE II
CONSTRUCTION PLANS BY VOLZ

REPLACE EXISTING 42" I.D. MANHOLE WITH 48" I.D. MANHOLE



AS OF OCTOBER 27, 1999, I CERTIFY THAT THESE "AS BUILT" DRAWINGS INDICATE THE ACTUAL LOCATIONS, LENGTHS, SIZES, TYPE AND CLASS OF PIPE, FLOWLINES, DEPTHS, STRUCTURES, WYE LOCATIONS, AS APPROPRIATE WITH THE EXCEPTION OF THE FOLLOWING: NONE.

BAX ENGINEERING CO., INC.
WILLIAM S. KANKOLENSKI
MO. REG. NO. 2197
11/5/99

AS-BUILTS ADDED OCTOBER 1999

SCALE: 1" = 50' HORIZ.
1" = 10' VERT.

AS-BUILT
WINGHAVEN PHASE I
CYPRESS KNOLL
SANITARY SEWER OUTFALL
PART OF U.S. SURVEY NO. 1669
AND PART OF SECTIONS 11 & 12
TOWNSHIP 46 NORTH, RANGE 2 EAST
CITY OF O'FALLON, MISSOURI

Kuhlmann
Design
Group, Inc.
46 Westbury Drive
St. Charles, Missouri 63101
Tel: (314) 946-3586
St. Louis, Missouri
Madison, Missouri
St. Charles, Missouri

KdG

DISCLAIMER OF RESPONSIBILITY
I hereby specify that the documents intended to be submitted by my and are limited to the sheet and hereby disclaim any responsibility for or other drawings, specifications, estimates, reports or other documents or instruments relating to or intended to be used for any part or parts of the architectural or engineering project or survey.

NO.	DATE	PER
1	06/30/98	PER DCSD
2	07/13/98	PER DCSD

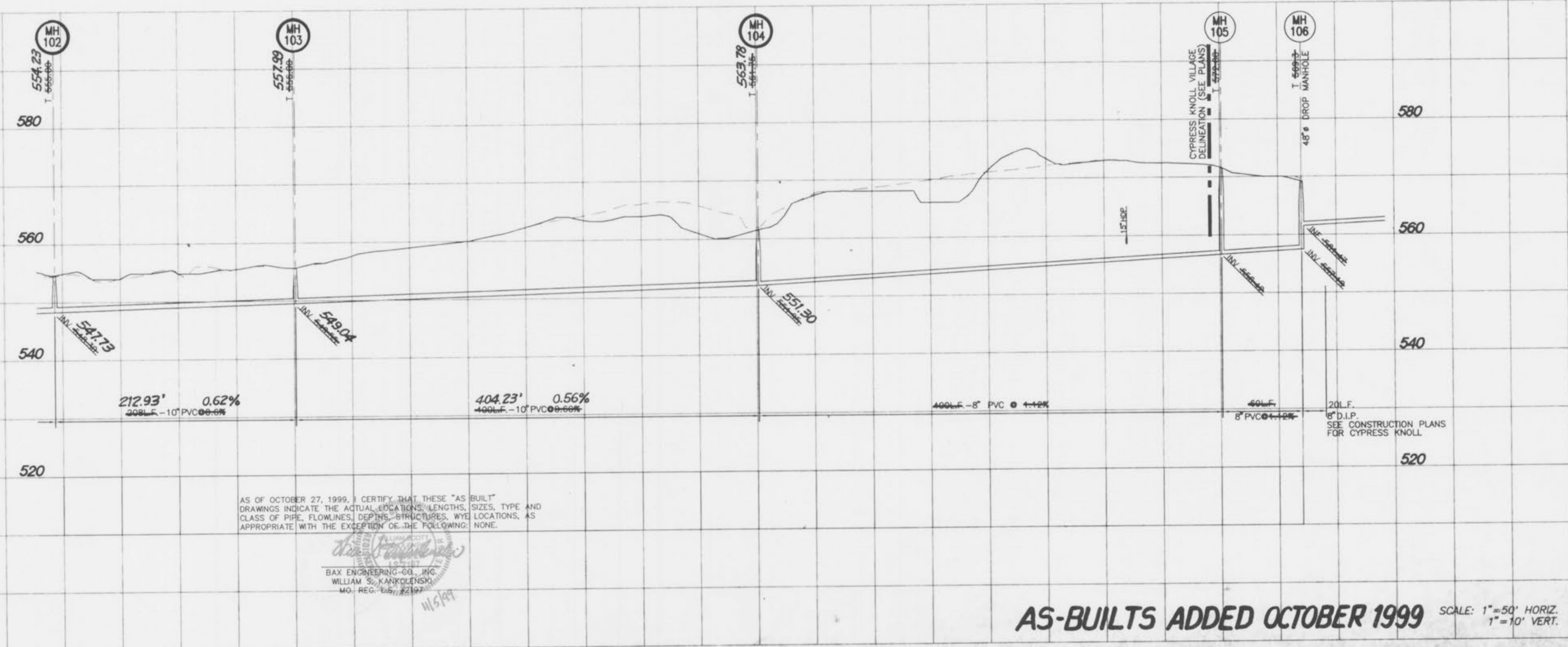
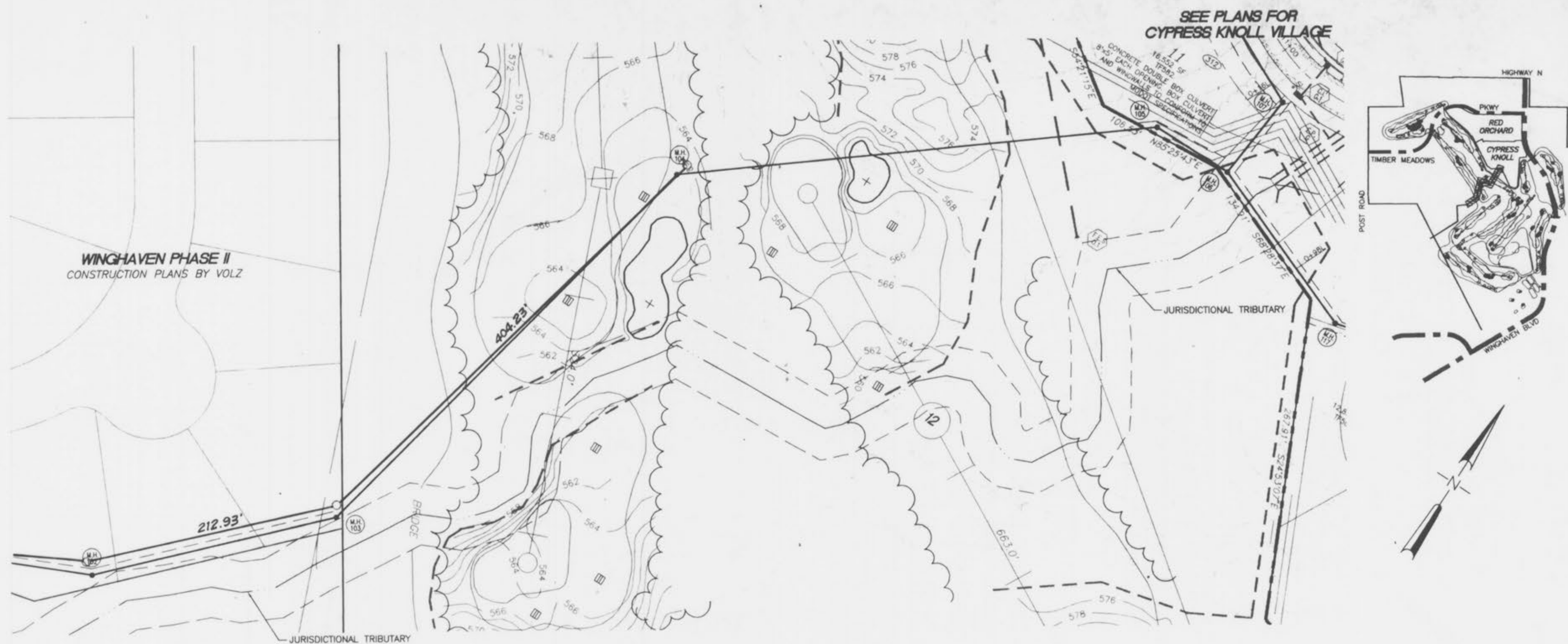
PROJECT NO. 970231 CONTRACT NO. 0002
DRAWN FPB CHECKED SYE

DATE 10/27/99

AS-BUILT
WINGHAVEN
SANITARY SEWER
EXTENSION

SHEET 1 OF 2

C31



AS OF OCTOBER 27, 1999, I CERTIFY THAT THESE "AS BUILT" DRAWINGS INDICATE THE ACTUAL LOCATIONS, LENGTHS, SIZES, TYPE AND CLASS OF PIPE, FLOWLINES, DEPTHS, STRUCTURES, WYE LOCATIONS, AS APPROPRIATE WITH THE EXCEPTION OF THE FOLLOWING: NONE.

William S. Kankolenski
 BAX ENGINEERING CO., INC.
 WILLIAM S. KANKOLENSKI
 MO. REG. ENG. #2197

AS-BUILTS ADDED OCTOBER 1999 SCALE: 1"=50' HORIZ.
 1"=10' VERT.

AS - BUILT

**WINGHAVEN PHASE I
 CYPRESS KNOLL
 SANITARY SEWER OUTFALL**
 PART OF U.S. SURVEY NO. 1669
 AND PART OF SECTIONS 11 & 12
 TOWNSHIP 46 NORTH, RANGE 2 EAST
 CITY OF FALLON, MISSOURI

**Kuhlmann
 Design
 Group, Inc.**
 #6 Westbury Drive
 St. Charles, Missouri 63301
 Tel: (314) 946-5566
 St. Louis, Missouri
 Indianapolis, Indiana
 St. Charles, Missouri

KdG

DISCLAIMER OF RESPONSIBILITY
 I hereby specify that the documents intended to be authorized by my seal are limited to the work, and I hereby disclaim any responsibility for all other Drawings, Specifications, Calculations, Reports or other documents or instruments relating to or intended to be used for any part or parts of the architecture or engineering project or survey.

NO.	DATE	BY
1	06/30/98	PER DCSD
2	07/13/98	PER DCSD

PROJECT NO. 970231 CONTRACT NO. 0002
 DRAWN FPB CHECKED SVE

DATE 10/27/99
**AS-BUILT
 WINGHAVEN
 SANITARY SEWER
 EXTENSION**

SHEET 2 OF 2
C32

J:\970231\0001\MCB\DESIGN\PHASE1\Sanitary Sewer Extension\C32.dwg, Tue, Jul 14, 1999, 05:02:19 PM, Plotted by: TDKM_BU