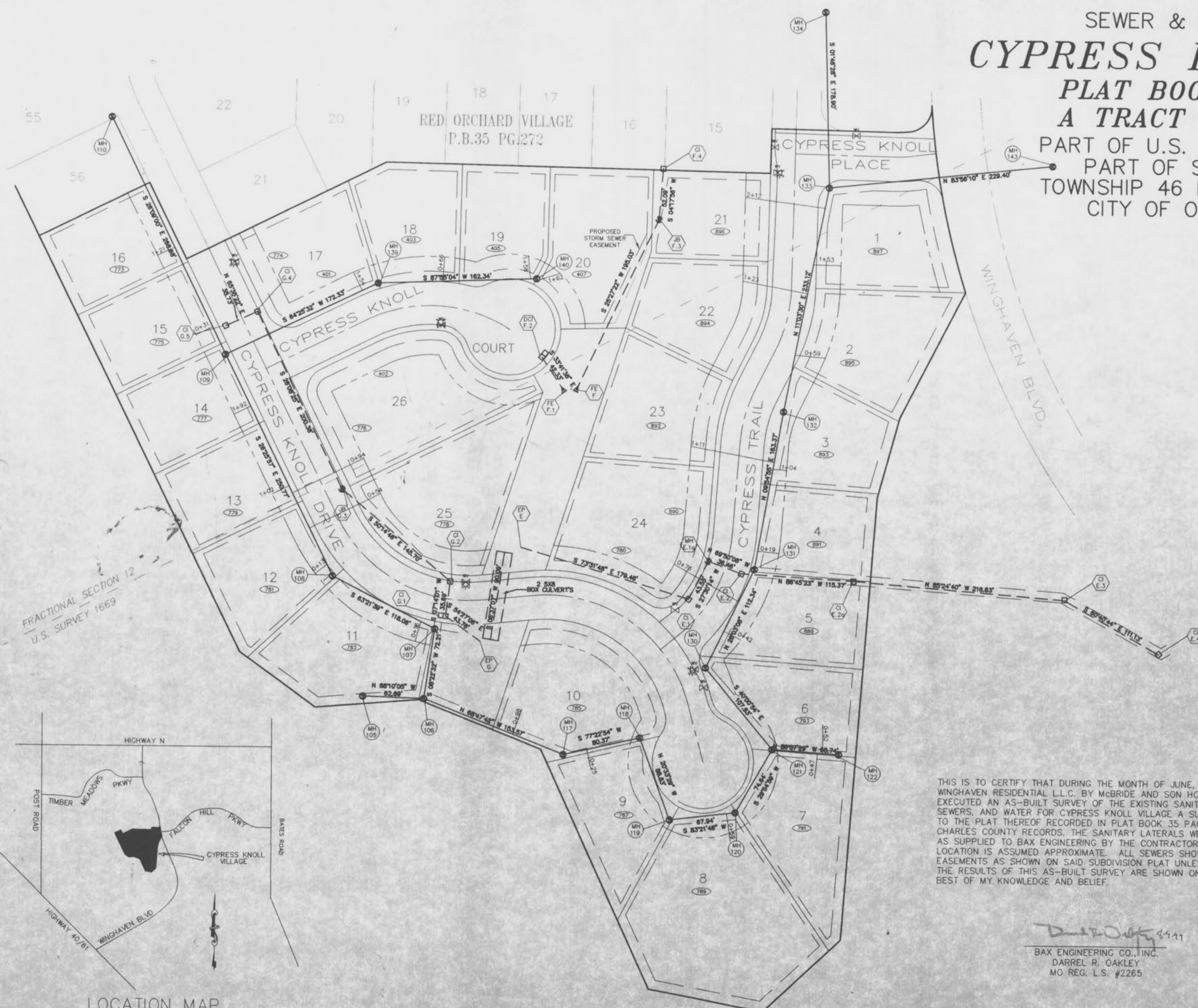


SEWER & WATER AS-BUILTS CYPRESS KNOLL VILLAGE

PLAT BOOK 35 PAGE 276
A TRACT OF LAND BEING

PART OF U.S. SURVEY NO. 1669 AND
PART OF SECTION 11 AND 12
TOWNSHIP 46 NORTH, RANGE 2 EAST
CITY OF O'FALLON, MISSOURI



FRACTIONAL SECTION 12
U.S. SURVEY 1669



THIS IS TO CERTIFY THAT DURING THE MONTH OF JUNE, 1999, BY ORDER OF WINGHAVEN RESIDENTIAL L.L.C. BY MCBRIDE AND SON HOMES, INC. MEMBER, EXECUTED AN AS-BUILT SURVEY OF THE EXISTING SANITARY AND STORM SEWERS, AND WATER FOR CYPRESS KNOLL VILLAGE A SUBDIVISION ACCORDING TO THE PLAT THEREOF RECORDED IN PLAT BOOK 35 PAGE 276 OF THE ST. CHARLES COUNTY RECORDS. THE SANITARY LATERALS WERE BUILT PER PLAN AS SUPPLIED TO BAX ENGINEERING BY THE CONTRACTOR, THEREFORE THEIR LOCATION IS ASSUMED APPROXIMATE. ALL SEWERS SHOWN LIE WITHIN THE EASEMENTS AS SHOWN ON SAID SUBDIVISION PLAT UNLESS OTHERWISE NOTED. THE RESULTS OF THIS AS-BUILT SURVEY ARE SHOWN ON THIS PLAT TO THE BEST OF MY KNOWLEDGE AND BELIEF.

D. Oakley
BAX ENGINEERING CO., INC.
DARREL R. OAKLEY
MO REG. L.S. #2265

- SHEET 1 COVER SHEET/FLAT PLAN
- SHEET 2 SANITARY PROFILES
- SHEET 3 STORM PROFILES

AS-BUILTS ADDED JUNE, 1999

PREPARED FOR:
WINGHAVEN RESIDENTIAL, L.L.C. BY
MCBRIDE AND SON HOMES, INC.
1 MCBRIDE AND SON CORPORATE CENTER DRIVE
CHESTERFIELD, MISSOURI 63005
(314) 537-2000

DISCLAIMER OF RESPONSIBILITY
I hereby certify that the documents submitted to be incorporated by my seal are limited to the sheet, and I hereby disclaim any responsibility for all other drawings, specifications, schedules, reports or other documents or instruments relating to or intended to be used for any part or parts of the architectural or engineering project or survey.

Copyright 1999
Bax Engineering Company, Inc.
All Rights Reserved

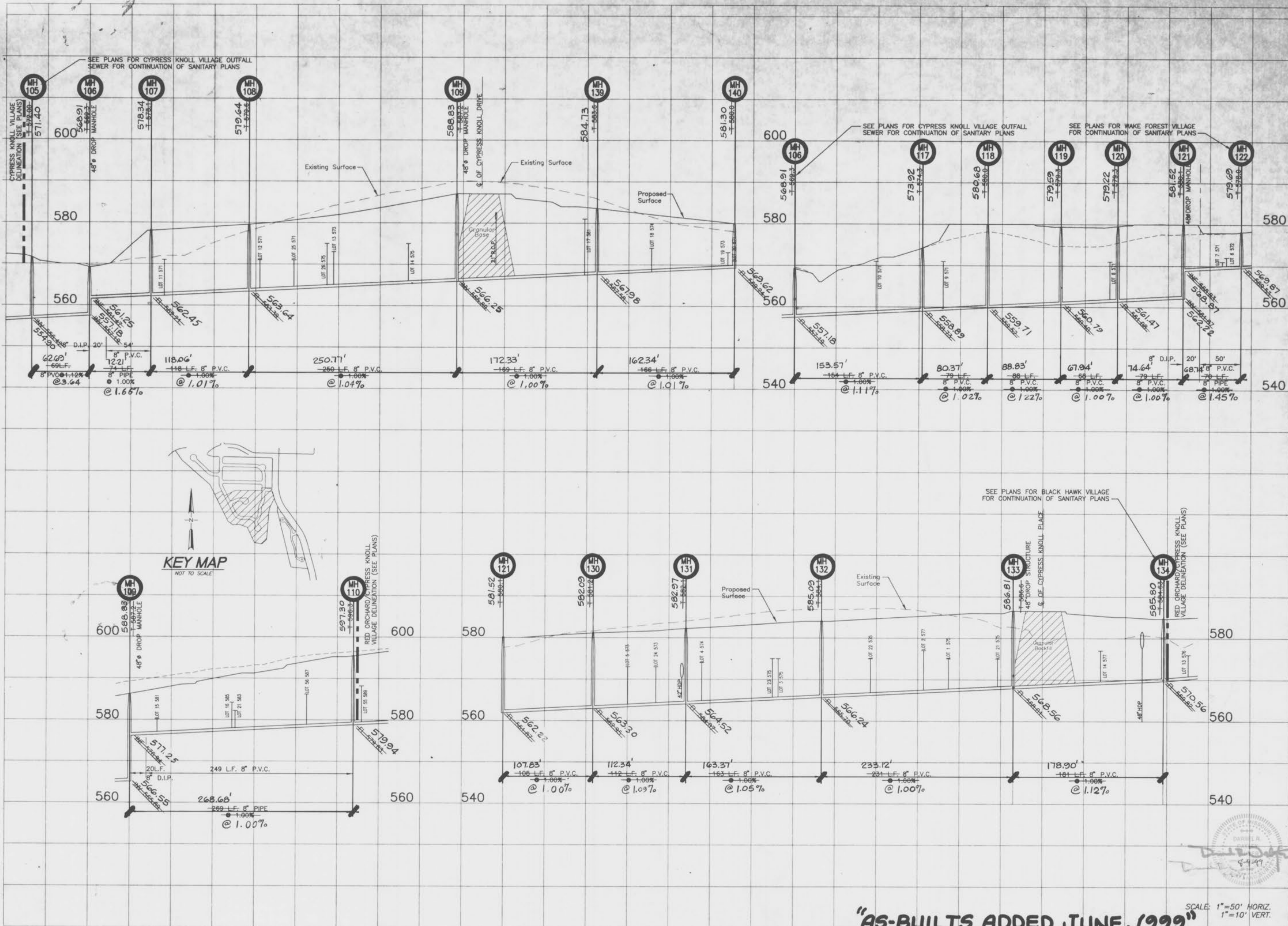
REVISIONS

ENGINEERING
PLANNING
SURVEYING

1052 South Cloverleaf Drive
St. Peters, MO. 63376-6445
314-928-6582
FAX 928-1718

6-28-99
BAX
97-8470A
PROJECT NUMBER
1 OF 3
SHEET OF
8470A-ASB-CK.dwg
FILE NAME
DWM
DRAWN
CHECKED

\\bax\drive\dwg\9800p\luc\8470a-asb-ck.dwg Fp1 Jul 16 14:00:16 1999 DWM



KEY MAP
NOT TO SCALE

WINGHAVEN PHASE I
IMPROVEMENT PLANS FOR
CYPRESS KNOLL VILLAGE

ann
Kuhlman
Design
Group, Inc.
15 E. Washington
Belleville, IL 62220-1421
Tel: (618) 234-8898



DISCLAIMER OF RESPONSIBILITY
I hereby specify that the documents intended to be authorized by my seal are limited to the work, and I hereby disclaim any responsibility for all other drawings, specifications, calculations, reports or other documents or instruments relating to or intended to be used for any part or parts of the architectural or engineering project or work.

NO.	DATE	PER
1	06/26/98	PER DCSD
2	07/14/98	PER DCSD

PROJECT NO. 970231	CONTRACT NO. 0002
DRAWN BSM	CHECKED DLK
DATE	06/04/98

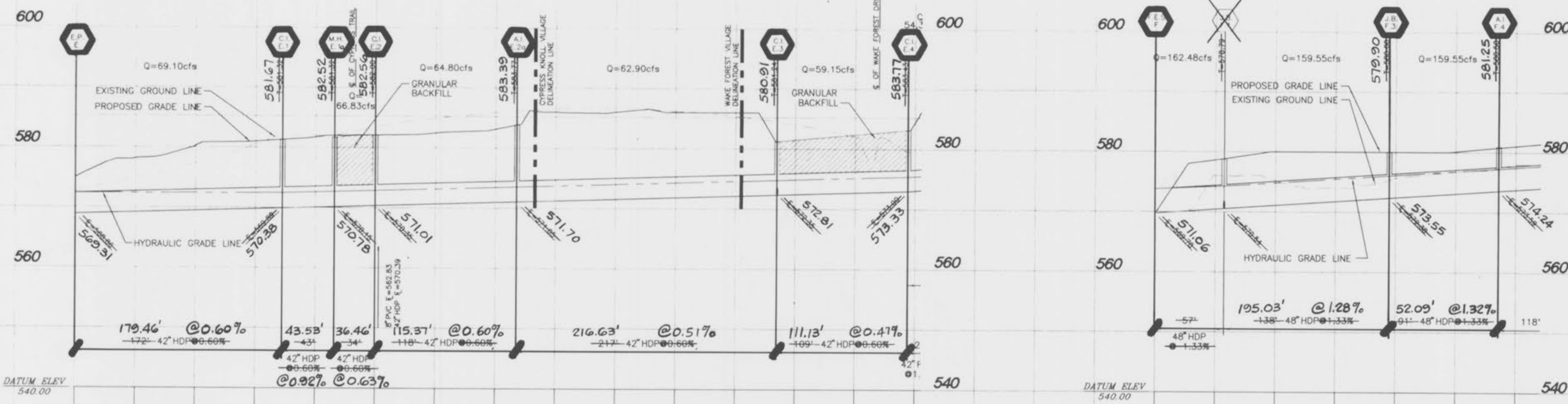
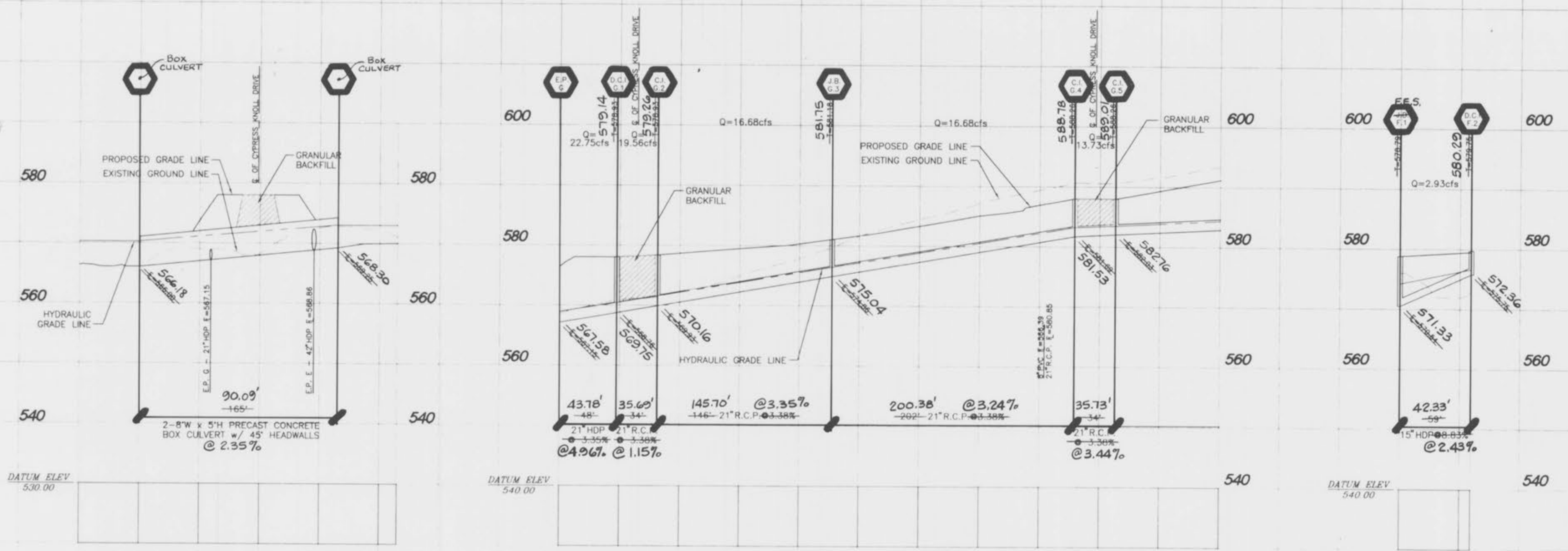
SANITARY SEWER
PROFILES

SHEET 2 OF 3
C32

"AS-BUILTS ADDED JUNE, 1999"

SCALE: 1"=50' HORIZ.
1"=10' VERT.

J:\970231\0001\WB3R\DE\PHASE1\CYPRESS\DWG File Jul 14 15:18:57 1998 Plotted by TERN_BU



"AS-BUILTS ADDED JUNE, 1999"



SCALE: 1"=50' HORIZ.
1"=10' VERT.

**WINGHAVEN PHASE I
IMPROVEMENT PLANS FOR
CYPRESS KNOLL VILLAGE**

Part of U.S. Survey No. 1669
and part of Sections 11 & 12
Township 46 North, Range 2 East
City of O'Fallon, Missouri

**Kuhlmann
Design
Group, Inc.**
#6 Westbury Drive
St. Charles, Missouri 63301
Tel: (314) 946-3566
St. Louis, Missouri
Mehlville, Missouri
St. Charles, Missouri



DISCLAIMER OF RESPONSIBILITY
I hereby specify that the documents intended to be authorized by my seal are limited to the sheet, and I hereby disclaim any responsibility for all other Drawings, Specifications, Estimates, Reports or other documents or instruments relating to or intended to be used for any part or parts of the architectural or engineering project or survey.

NO.	DATE	DESCRIPTION
1	06/26/98	PER O'FALLON
2	06/10/98	REVISED STORM
3	8/20/98	CULVERT SIZE

PROJECT NO.	CONTRACT NO.
970231	0002

DRAWN	CHECKED	DATE
FPB	SYE	06/04/98

**CYPRESS KNOLL
STORM SEWER
PROFILES**

SHEET **3** OF **3**
C3.4