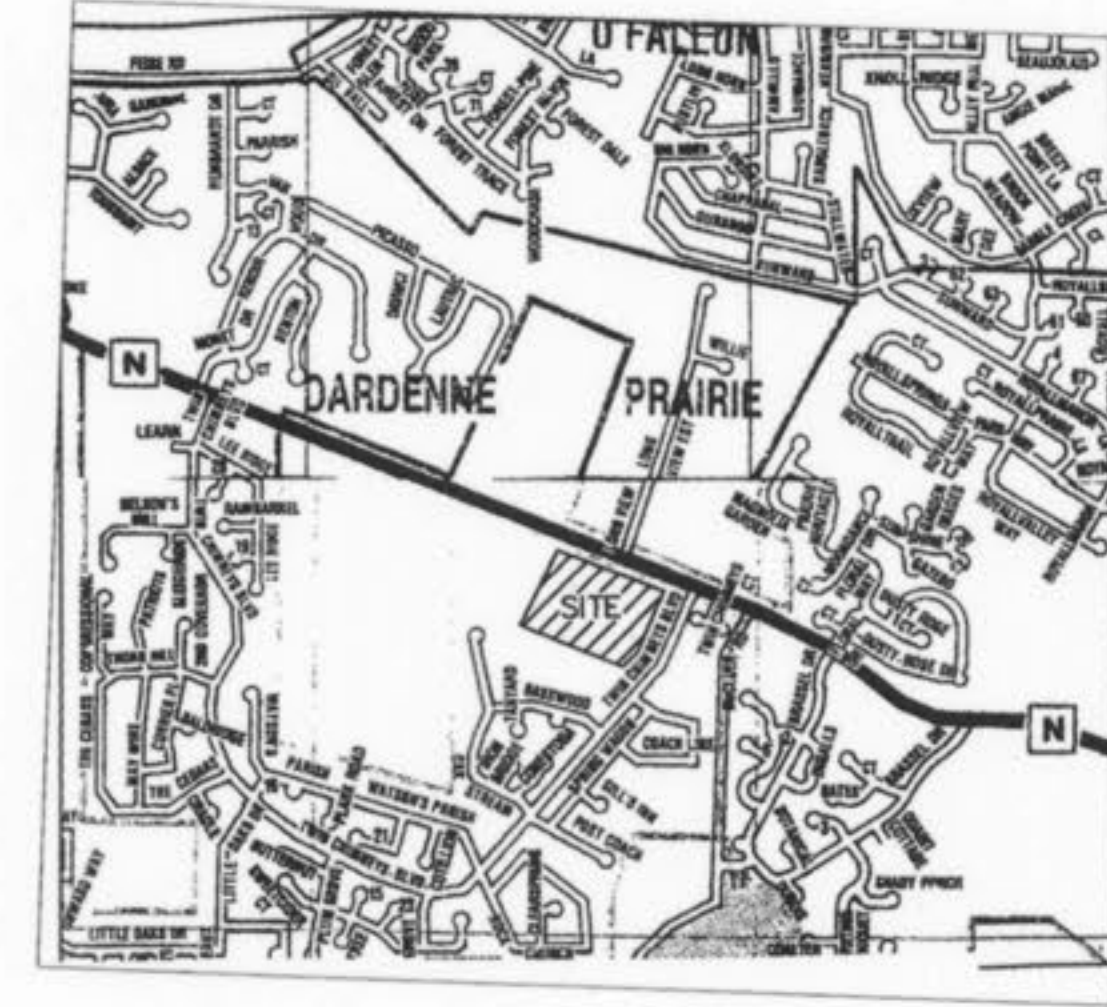


# AS-BUILT SEWER PLANS FOR PHASE 1 OF DELMAR GARDENS OF ST. CHARLES COUNTY

## INDEX OF DRAWINGS

- |   |                      |
|---|----------------------|
| 1 | COVER                |
| 2 | SITE PLAN            |
| 3 | SANITARY PROFILES    |
| 4 | STORM PROFILES       |
| 5 | STORM PROFILES       |
| 6 | STORM PROFILES       |
| 7 | STORM PROFILES       |
| 8 | BASIN CROSS SECTIONS |



**PROJECT BENCHMARKS**

REFERENCE BENCHMARK: MO DOT BENCHMARK ELEV = 582.41  
 SPIKE 35 RIGHT OF STA. 172+50 , 0.70 MILES NORTHWEST OF JUNCTION ROUTES  
 "K" AND "N" ALONG ROUTE "N".  
 SITE BENCHMARK: ELEV=544.92  
 TOP OF SANITARY MANHOLE 40 FEET NORTHWEST OF REAR LOT CORNER LOT 46B/  
 47B TWIN CHIMNEYS.

**SEWER MEASUREMENTS**

THE EXISTING SEWER LENGTHS, SIZES, FLOWLINES, DEPTHS OF STRUCTURES AND  
 SEWERS AND LOCATIONS WITH RESPECT TO EXISTING OR PROPOSED EASEMENTS  
 HAVE BEEN MEASURED. THE RESULTS OF THOSE MEASUREMENTS ARE SHOWN ON  
 THIS SET OF FINAL MEASUREMENT PLANS.

ALL PUBLIC SEWERS ARE LOCATED WITHIN DESIGNATED EXISTING OR PROPOSED  
 EASEMENTS EXCEPT AS FOLLOWS:

SIGNED: *[Signature]*  
 P.E./L.S. KANCOLENSKI  
 NUMBER 10-2197 DATE 02-22-2005



AS-BUILTS NOTE:  
 ALL DISTANCE AND SLOPE CALCULATIONS ARE FROM  
 CENTER OF STRUCTURE TO CENTER OF STRUCTURE.

AS-BUILTS ADDED FEBRUARY 2005

PREPARED FOR:  
 PARIC CORPORATION  
 1001 BOARDWALK SPRINGS PLACE  
 O'FALLON, MO 63366

DISCLAIMER OF RESPONSIBILITY  
 I hereby specify that the documents intended  
 to be authorized by my seal are limited to  
 this sheet, and I hereby disclaim any respon-  
 sibility for all other drawings, specifications,  
 estimates, reports or other documents or  
 instruments relating to or intended to be used  
 for any part or parts of the infrastructure or  
 engineering project or survey.

Copyright 2005  
 BAC Engineering Company, Inc.  
 All Rights Reserved

**REVISIONS**

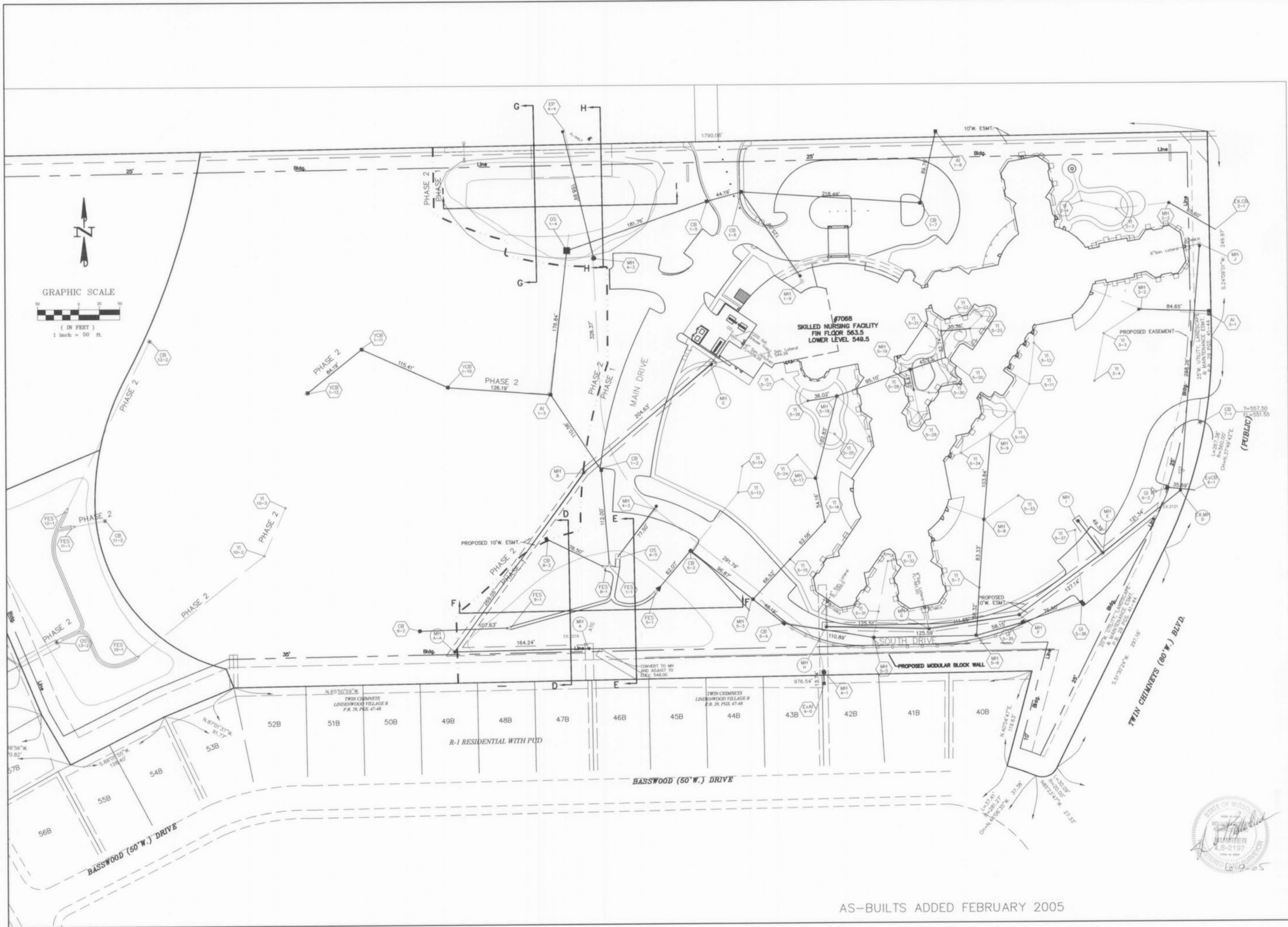



**ENGINEERING  
 PLANNING  
 SURVEYING**

1052 South Cloverleaf Drive  
 St. Peters, MO. 63376-6445  
 636-928-5552  
 FAX 928-1718

2-1-2005  
 DATE  
 02-11978  
 PROJECT NUMBER  
 1 OF 8  
 SHEET OF  
 11978ASB.DWG  
 FILE NAME  
 BGC  
 DRAWN CHECKED  
 JR/MC 10-04  
 SURVEY BY DATE

\\DWG\11500PLUS\11978--DELMAR GARDENS S.N.F\ASBUILTS\11978ASB.dwg, PLAN 2, 6/8/2005 1:57:43 PM, Sta 54 BGC,Sta 54 BGC



PREPARED FOR:  
 PARIC CORPORATION  
 1001 BOARDWALK SPRINGS PLACE  
 O'FALLON, MO 63366

DISCLAIMER OF RESPONSIBILITY  
 I hereby certify that the documents intended to be reproduced by any and all means in this sheet, and I hereby disclaim any responsibility for all other drawings, specifications, estimates, reports or other documents or instruments relating to or intended to be used for any part or parts of the architectural or engineering project or survey.

Copyright 2005  
 BGC Engineering Company, Inc.  
 All Rights Reserved

REVISIONS



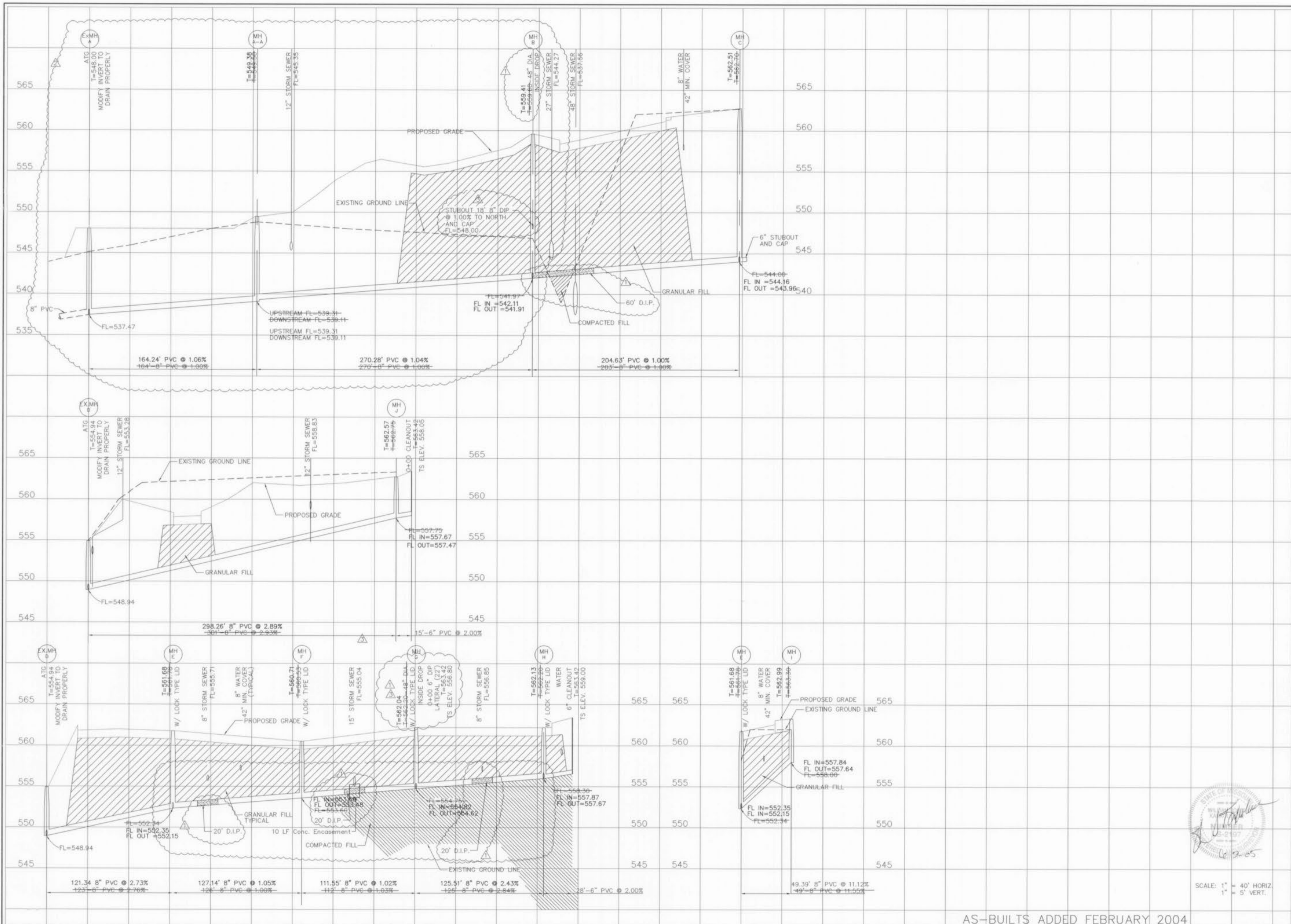
ENGINEERING  
 PLANNING  
 SURVEYING  
 1052 South Cloverleaf Drive  
 St. Peters, MO. 63376-6445  
 636-928-5552  
 FAX 928-1718



AS-BUILTS ADDED FEBRUARY 2005

2-1-2005  
 DATE  
 02-11978  
 PROJECT NUMBER  
 2 of 8  
 SHEET OF  
 11978ASB.DWG  
 FILE NAME  
 BGC  
 DRAWN CHECKED  
 JR/MC 10-04  
 SURVEY BY DATE

D:\DWG\111500PLUS\11978--DELMAR GARDENS S.A.F.ASHULTS\1107BASEL.DWG, SANITARY PROFILES 3, 6/9/2005 9:31:25 AM, Sta 54 BCC.Sha 54.DWG



PREPARED FOR:  
**PARIC CORPORATION**  
 1001 BOARDWALK SPRINGS PLACE  
 O'FALLON, MO 63366

DISCLAIMER OF RESPONSIBILITY  
 I hereby specify that the documents intended to be scheduled by my seal are limited to this sheet, and I hereby disclaim any responsibility for all other drawings, specifications, estimates, reports or other documents or instruments relating to or intended to be used for any part or parts of the architectural or engineering project or survey.

Copyright 2004  
 BGC Engineering Company, Inc.  
 All Rights Reserved

REVISIONS

NO.	DATE	DESCRIPTION

**ENGINEERING  
 PLANNING  
 SURVEYING**

1052 South Cloverleaf Drive  
 St. Peters, MO. 63376-6445  
 636-928-5552  
 FAX 928-1716

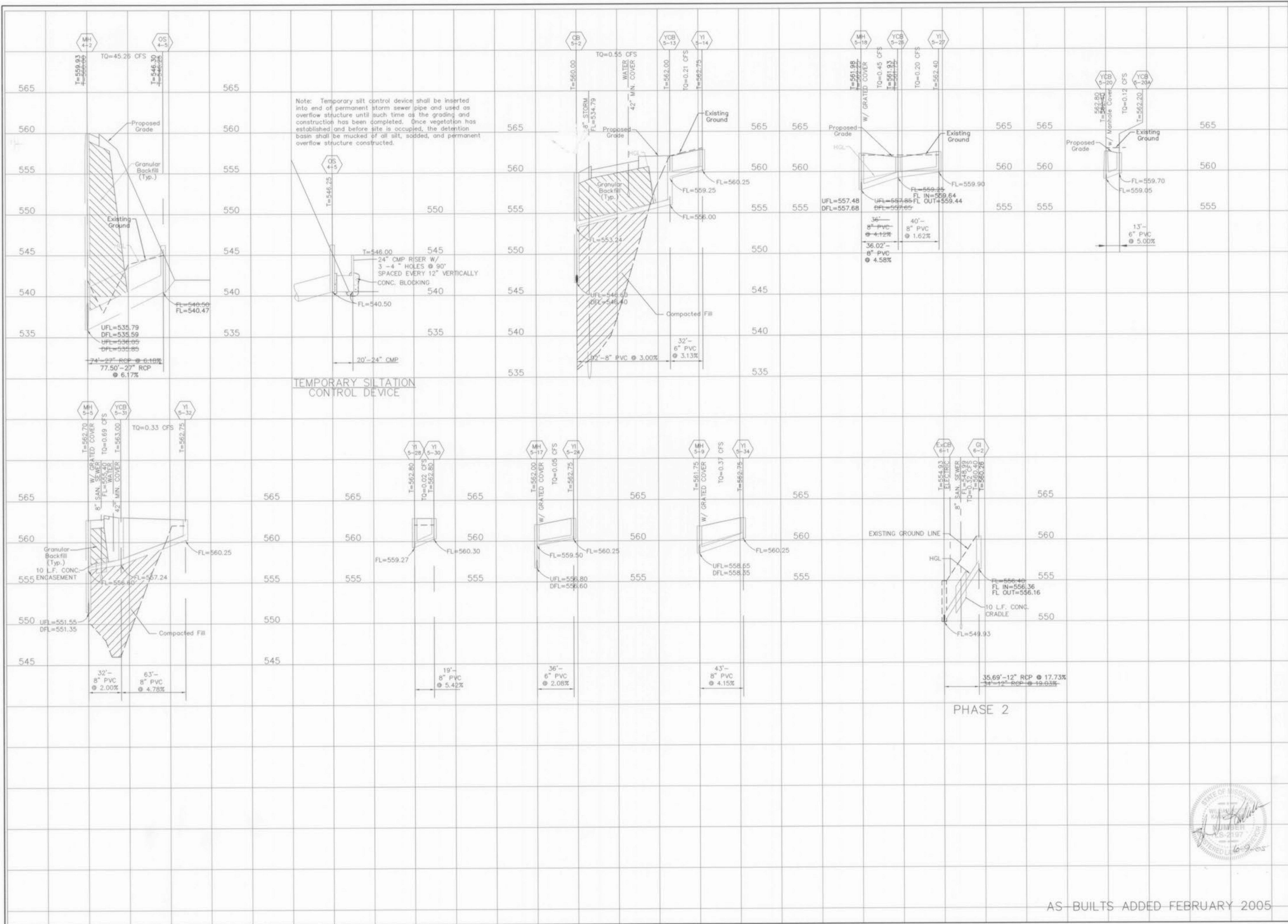


SCALE: 1" = 40' HORIZ  
 1" = 5' VERT.

AS-BUILTS ADDED FEBRUARY 2004

2-1-2005  
 DATE  
 02-11978  
 PROJECT NUMBER  
 3 OF 8  
 SHEET OF  
 11978ASB.DWG  
 FILE NAME  
 BGC  
 DRAWN CHECKED  
 JR/MC 10-04  
 SURVEY BY DATE

\\DWG\11500PLUS\11978--DELMAR GARDENS S.N.F\ASBUILTS\11978ASB.DWG. STORM PROFILES 4, 6/8/2005 1:40:35 PM. Sta. 34 BCC.Sta 54 BCC



PREPARED FOR:  
PARIC CORPORATION  
1001 BOARDWALK SPRINGS PLACE  
O'FALLON, MO 63366

DISCLAIMER OF RESPONSIBILITY  
Paric Corporation warrants that the documents intended to be authorized by its seal are limited to this sheet, and it hereby disclaims any responsibility for all other drawings, specifications, estimates, reports or other documents or instruments relating to or intended to be used for any part or parts of the architectural or engineering project or survey.

Copyright 2005  
Paric Engineering Company, Inc.  
All Rights Reserved.

REVISIONS

NO.	DATE	DESCRIPTION

**ENGINEERING  
PLANNING  
SURVEYING**

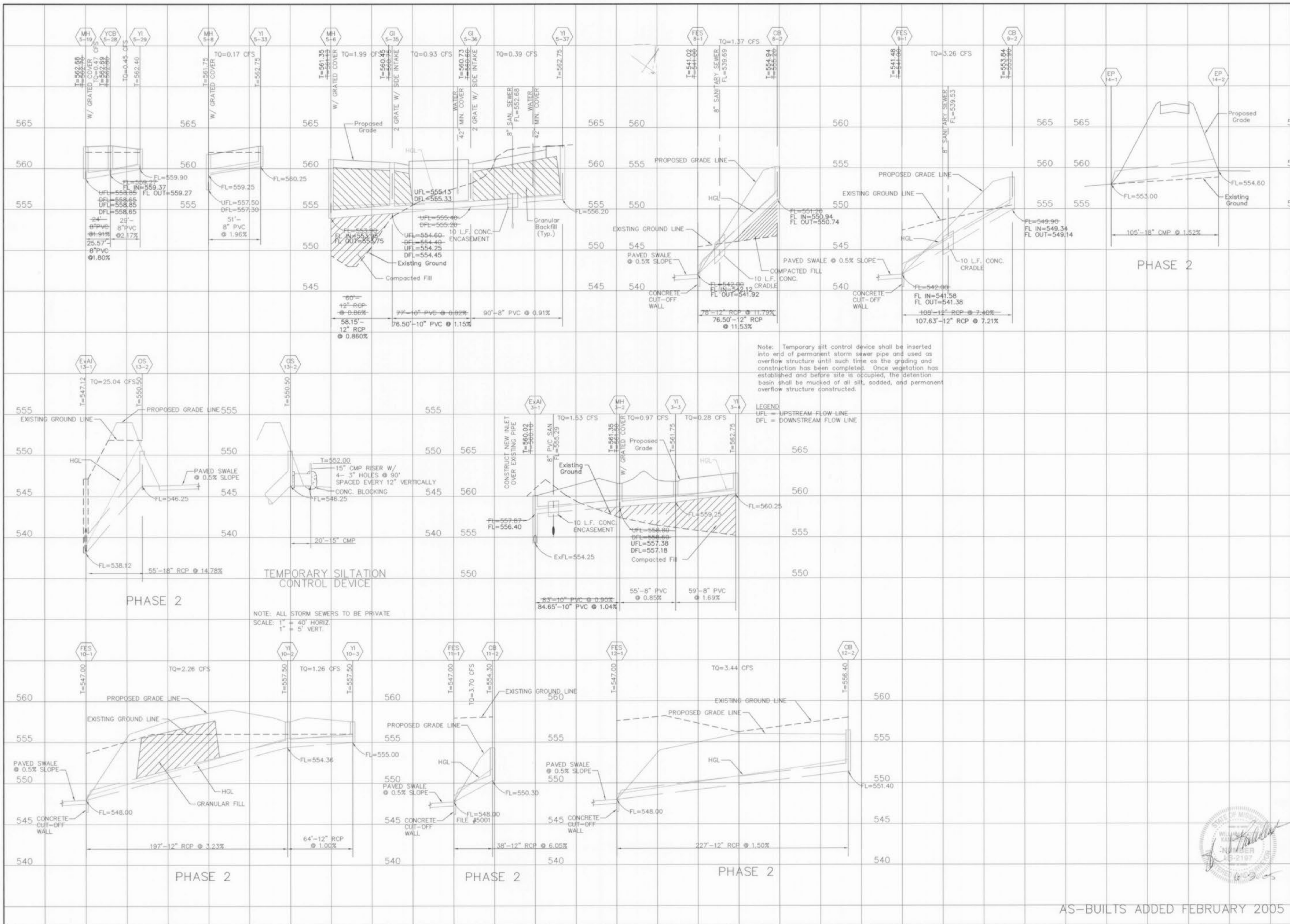
1052 South Cloverleaf Drive  
St. Peters, MO. 63376-6445  
636-828-5552  
FAX 636-1718



2-1-2005  
DATE  
02-11978  
PROJECT NUMBER  
4 of 8  
SHEET OF  
11978ASB.DWG  
FILE NAME  
BCC  
DRAWN CHECKED  
JR/MC 10-04  
SURVEY BY DATE

AS-BUILTS ADDED FEBRUARY 2005

\\DWG\11000PLUS\11978--DELMAR GARDENS S.N.F\ASBUILTS\11978ASE.DWG. STORM PROFILES 5, 6/9/2005 1:00:08 PM, Sta. 54 BCC.Sta 54 BCC



Note: Temporary silt control device shall be inserted into end of permanent storm sewer pipe and used as overflow structure until such time as the grading and construction has been completed. Once vegetation has established and before site is occupied, the detention basin shall be mucked of all silt, sodded, and permanent overflow structure constructed.

LEGEND  
 UFL = UPSTREAM FLOW LINE  
 DFL = DOWNSTREAM FLOW LINE

NOTE: ALL STORM SEWERS TO BE PRIVATE  
 SCALE: 1" = 40' HORIZ.  
 1" = 5' VERT.

PREPARED FOR:  
 PARIC CORPORATION  
 1001 BOARDWALK SPRINGS PLACE  
 O'FALLON, MO 63366

DISCLAIMER OF RESPONSIBILITY  
 I hereby certify that the documents intended to be subcontracted by my seal are limited to this sheet, and I hereby disclaim any responsibility for all other drawings, specifications, estimates, reports or other documents or instruments relating to or intended to be used for any part or parts of the architectural or engineering project or survey.

Copyright 2005  
 The Engineering Company, Inc.  
 All Rights Reserved

REVISIONS

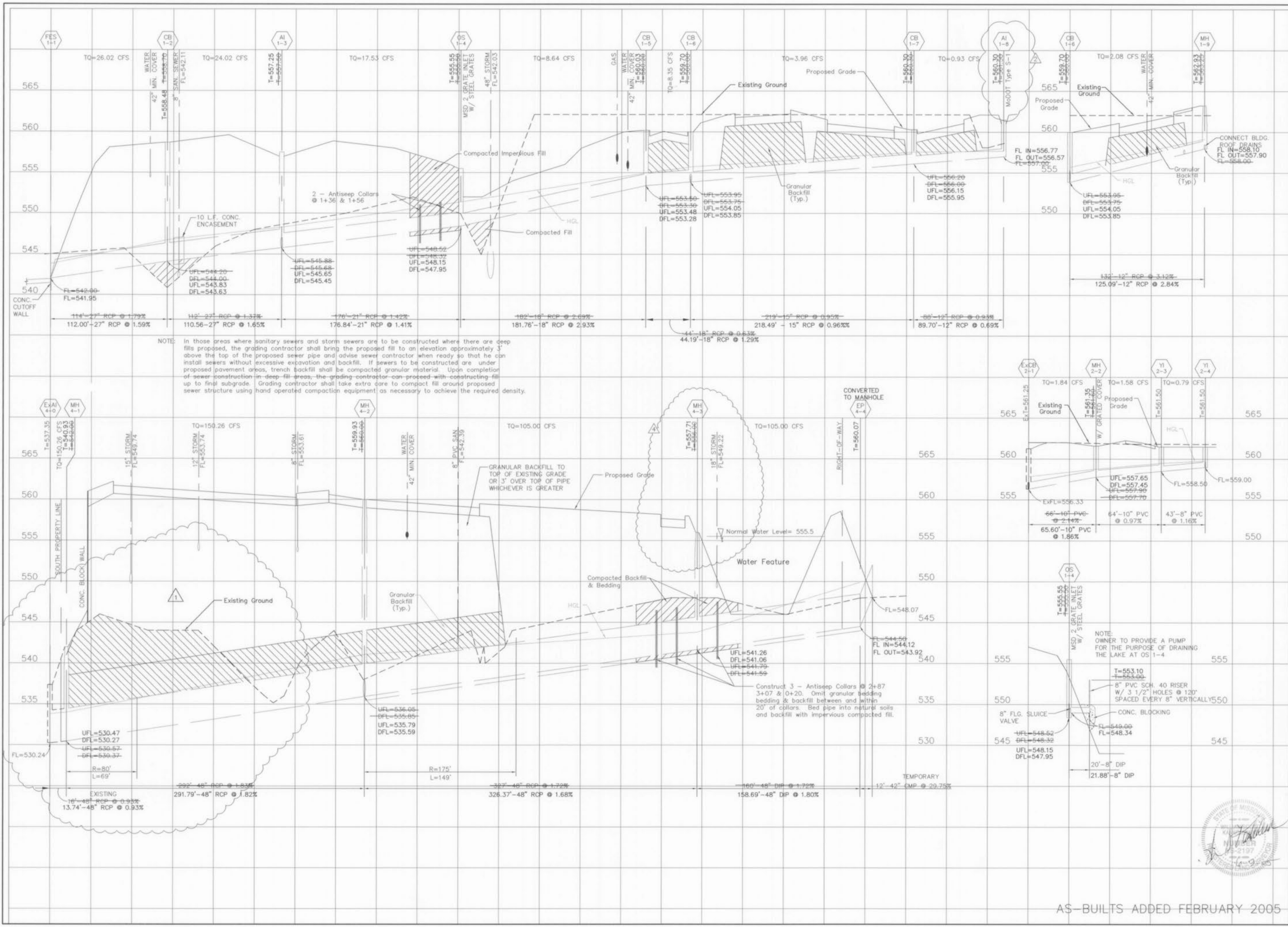
**ENGINEERING  
 PLANNING  
 SURVEYING**

1052 South Cloverleaf Drive  
 St. Peters, MO. 63376-6445  
 636-928-5552  
 FAX 628-1718

2-1-2005  
 DATE  
 02-11978  
 PROJECT NUMBER  
 5 of 8  
 SHEET OF  
 11978ASB.DWG  
 FILE NAME  
 BCC  
 DRAWN CHECKED  
 JR/MC 10-04  
 SURVEY BY DATE

AS-BUILTS ADDED FEBRUARY 2005

\\PWC\A11500PLUS\11978--DELMAR GARDENS S.N.F\ASBUILTS\11978ASB.DWG, STORM PROFILES 6, 6/8/2005 11:19:57 AM, Sta 54 DGC,Sta 54 BGC



NOTE: In those areas where sanitary sewers and storm sewers are to be constructed where there are deep fills proposed, the grading contractor shall bring the proposed fill to an elevation approximately 3' above the top of the proposed sewer pipe and advise sewer contractor when ready so that he can install sewers without excessive excavation and backfill. If sewers are to be constructed in deep fill areas, trench backfill shall be compacted granular material. Upon completion of sewer construction in deep fill areas, the grading contractor can proceed with constructing fill up to final subgrade. Grading contractor shall take extra care to compact fill around proposed sewer structure using hand operated compaction equipment, as necessary to achieve the required density.

NOTE: OWNER TO PROVIDE A PUMP FOR THE PURPOSE OF DRAINING THE LAKE AT OS 1-4

PREPARED FOR:  
PARIC CORPORATION  
1001 BOARDWALK SPRINGS PLACE  
O'FALLON, MO 63366

DISCLAIMER OF RESPONSIBILITY  
I hereby specify that the documents intended to be authorized by my seal are limited to this sheet, and I hereby disclaim any responsibility for all other drawings, specifications, estimates, reports or other documents or instruments relating to or intended to be used for any part or parts of the substantial or engineering project or survey.

Copyright 2005  
Paric Engineering Company, Inc.  
All Rights Reserved

REVISIONS	



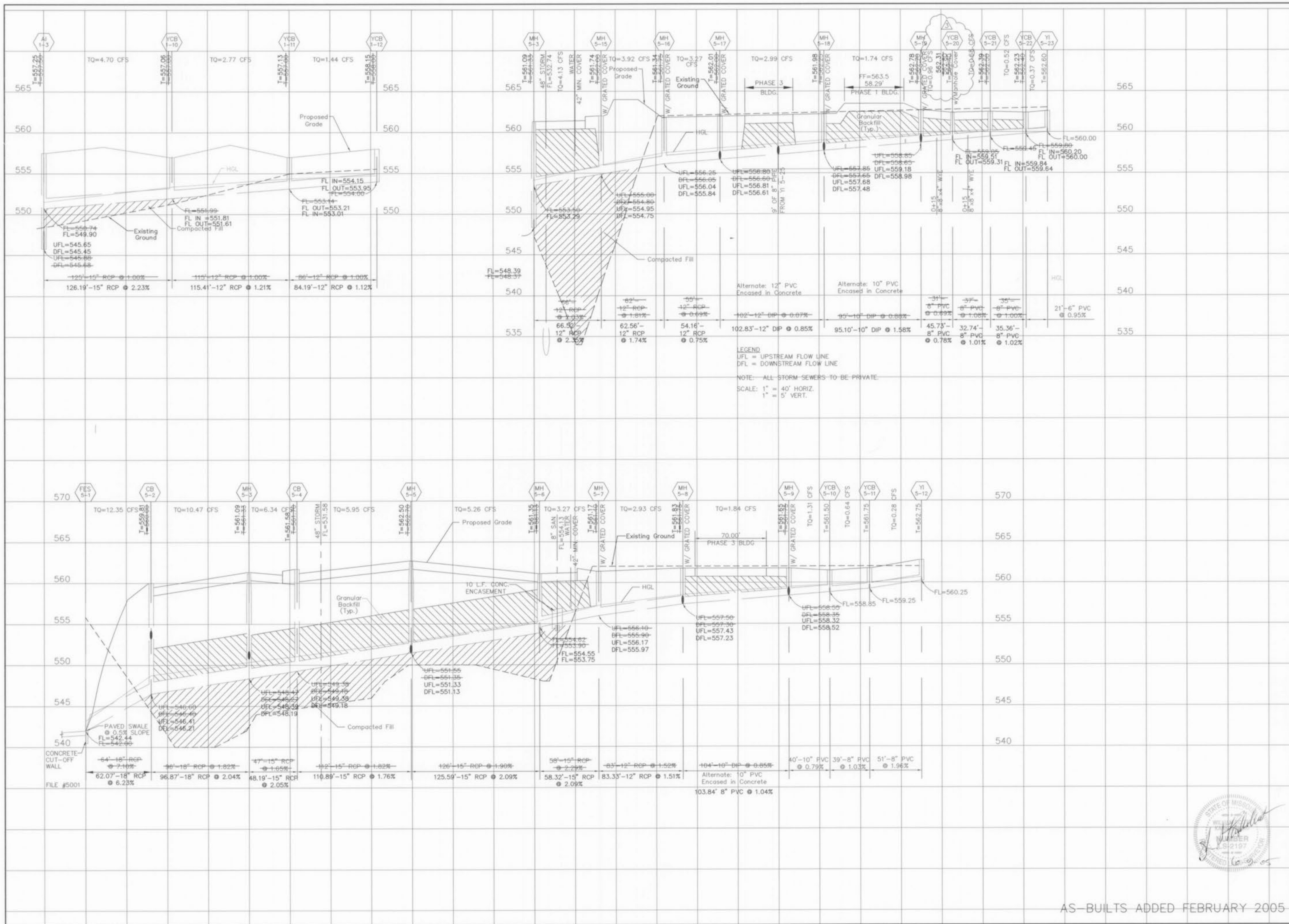
ENGINEERING  
PLANNING  
SURVEYING  
1062 South Cloverleaf Drive  
St. Peters, MO. 63376-6445  
636-928-5552  
FAX 928-1716

STATE OF MISSOURI  
Professional Engineer  
No. 2197  
Exp. 12/31/2005  
J. R. MCMANUS

AS-BUILTS ADDED FEBRUARY 2005

2-1-2005  
DATE  
02-11978  
PROJECT NUMBER  
6 OF 8  
SHEET OF  
11978ASB.DWG  
FILE NAME  
BGC  
DRAWN CHECKED  
JR/MC 10-04  
SURVEY BY DATE

\\DWG\11500PLUS\11978--DELMAR GARDENS S.N.F.\ASBUILTS\11978ASB.DWG - STORM PROFILES 7, 6/7/2005 11:03:04 AM, Sta 54, BCC, Sta 54 R/C



PREPARED FOR:  
**PARIC CORPORATION**  
 1001 BOARDWALK SPRINGS PLACE  
 O'FALLON, MO 63366

DISCLAIMER OF RESPONSIBILITY  
 I hereby certify that the documents intended to be authorized by my seal are limited to the sheet, and I hereby disclaim any responsibility for all other Drawings, Specifications, Estimates, Reports or other documents or instruments relating to or intended to be used for any part or parts of the infrastructure or engineering project or survey.

Copyright 2005  
 BCC Engineering Company, Inc.  
 All Rights Reserved

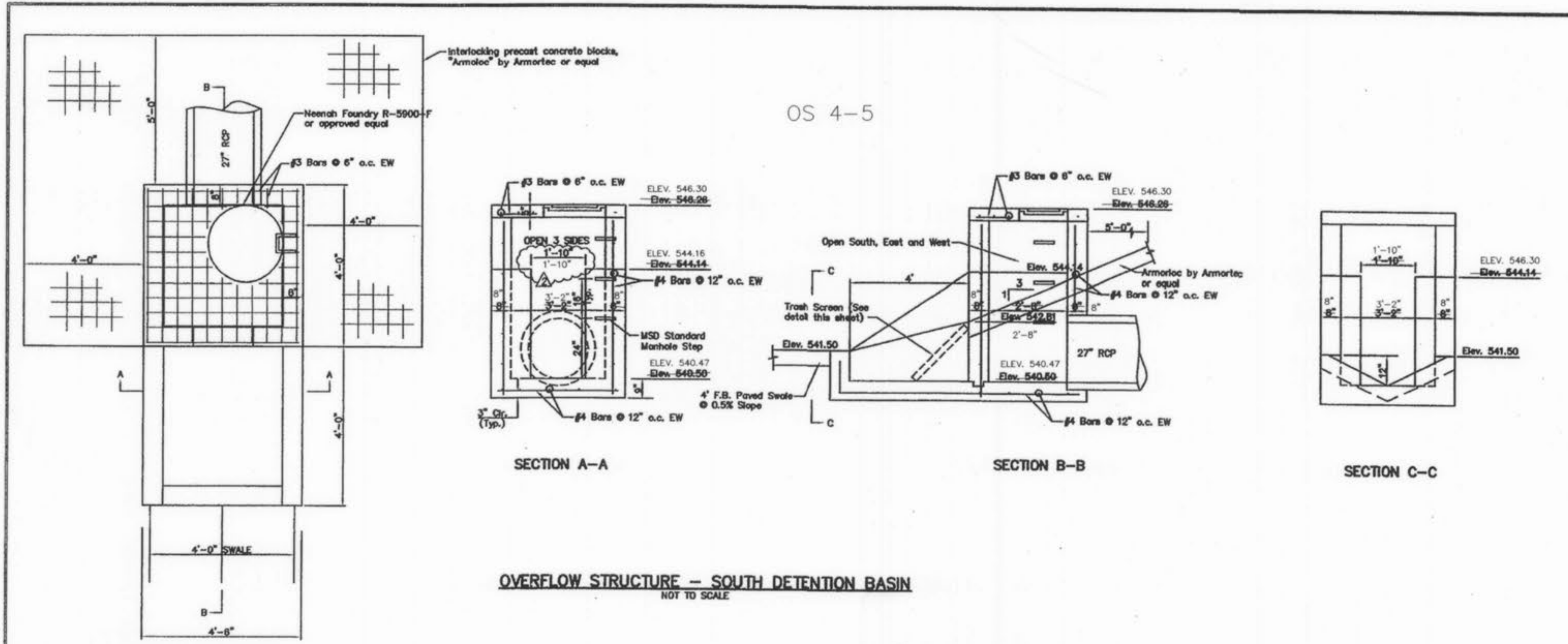
NO.	REVISIONS

**ENGINEERING  
 PLANNING  
 SURVEYING**  
 1652 South Cloverleaf Drive  
 St. Peters, MO. 63376-8445  
 636-928-5552  
 FAX 928-1718

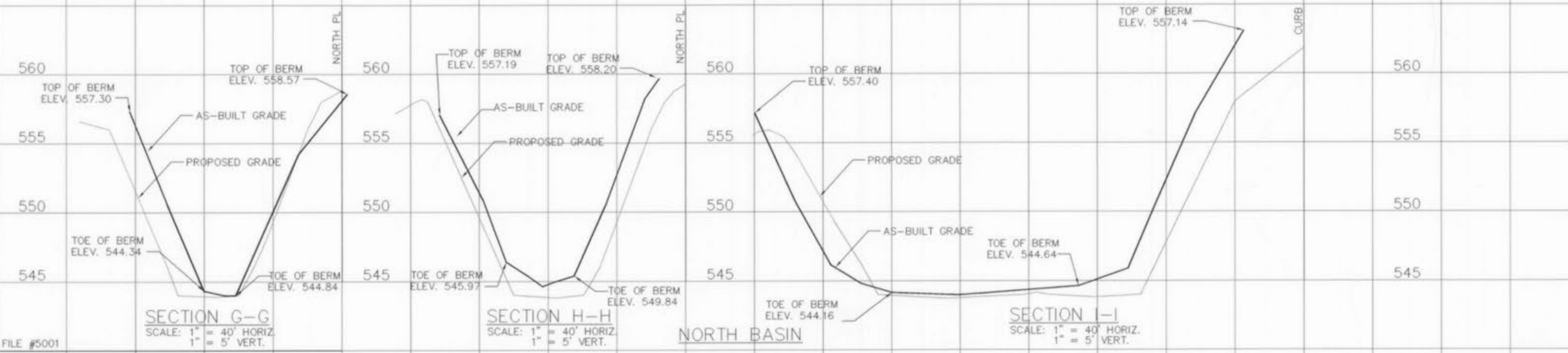
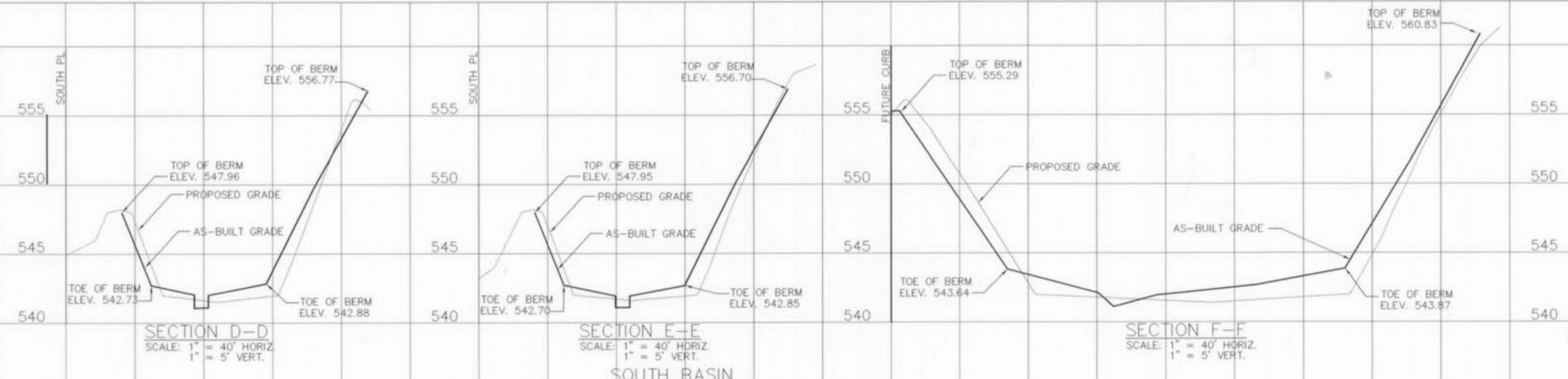
STATE OF MISSOURI  
 REGISTERED PROFESSIONAL ENGINEER  
 No. 11978  
 J. S. [Signature]  
 FEBRUARY 10 2005

2-1-2005  
 DATE  
 02-11978  
 PROJECT NUMBER  
 7 of 8  
 SHEET OF  
 11978ASB.DWG  
 FILE NAME  
 BCC  
 DRAWN CHECKED  
 JR/MC 10-04  
 SURVEY BY DATE

AS-BUILTS ADDED FEBRUARY 2005



**OVERFLOW STRUCTURE - SOUTH DETENTION BASIN**  
NOT TO SCALE



PREPARED FOR:  
PARIC CORPORATION  
1001 BOARDWALK SPRINGS PLACE  
O'FALLON, MO 63366

DISCLAIMER OF RESPONSIBILITY  
I hereby certify that the documents submitted to be authorized by my seal are those of this work, and I hereby disclaim any responsibility for all other drawings, specifications, estimates, reports or other documents or instruments relating to or intended to be used for any part or parts of the architecture or engineering project or survey.

Copyright 2005  
BAC Engineering Company, Inc.  
All Rights Reserved

NO.	REVISIONS

**ENGINEERING  
PLANNING  
SURVEYING**

1052 South Cloverleaf Drive  
St. Peters, MO. 63376-6445  
636-928-5552  
FAX 928-1718



2-1-2005  
DATE  
02-11978  
PROJECT NUMBER  
8 of 8  
SHEET OF  
11978ASB.DWG  
FILE NAME  
BGC  
DRAWN CHECKED  
JR/MC 10-04  
SURVEY BY DATE

AS-BUILTS ADDED FEBRUARY 2005