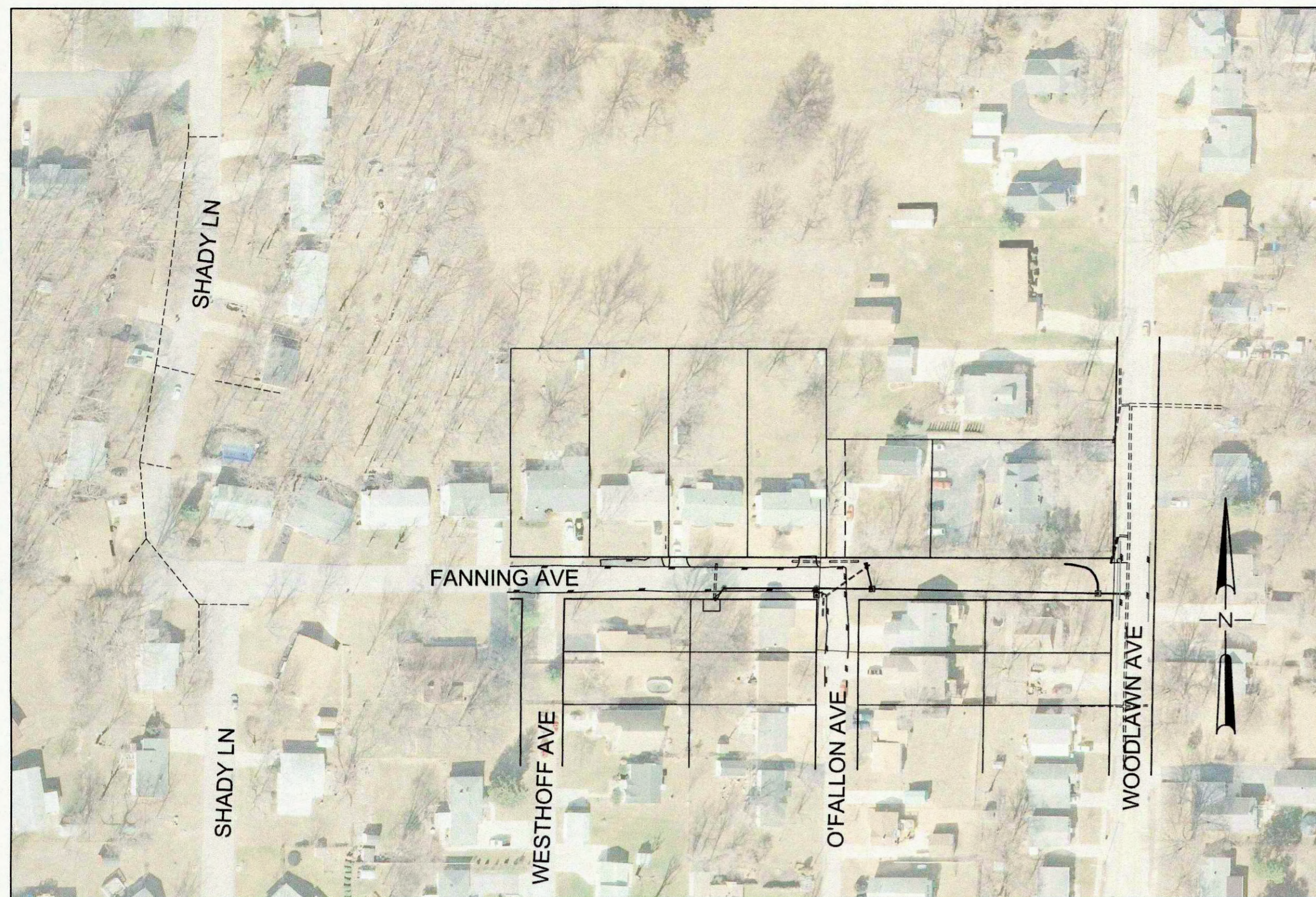
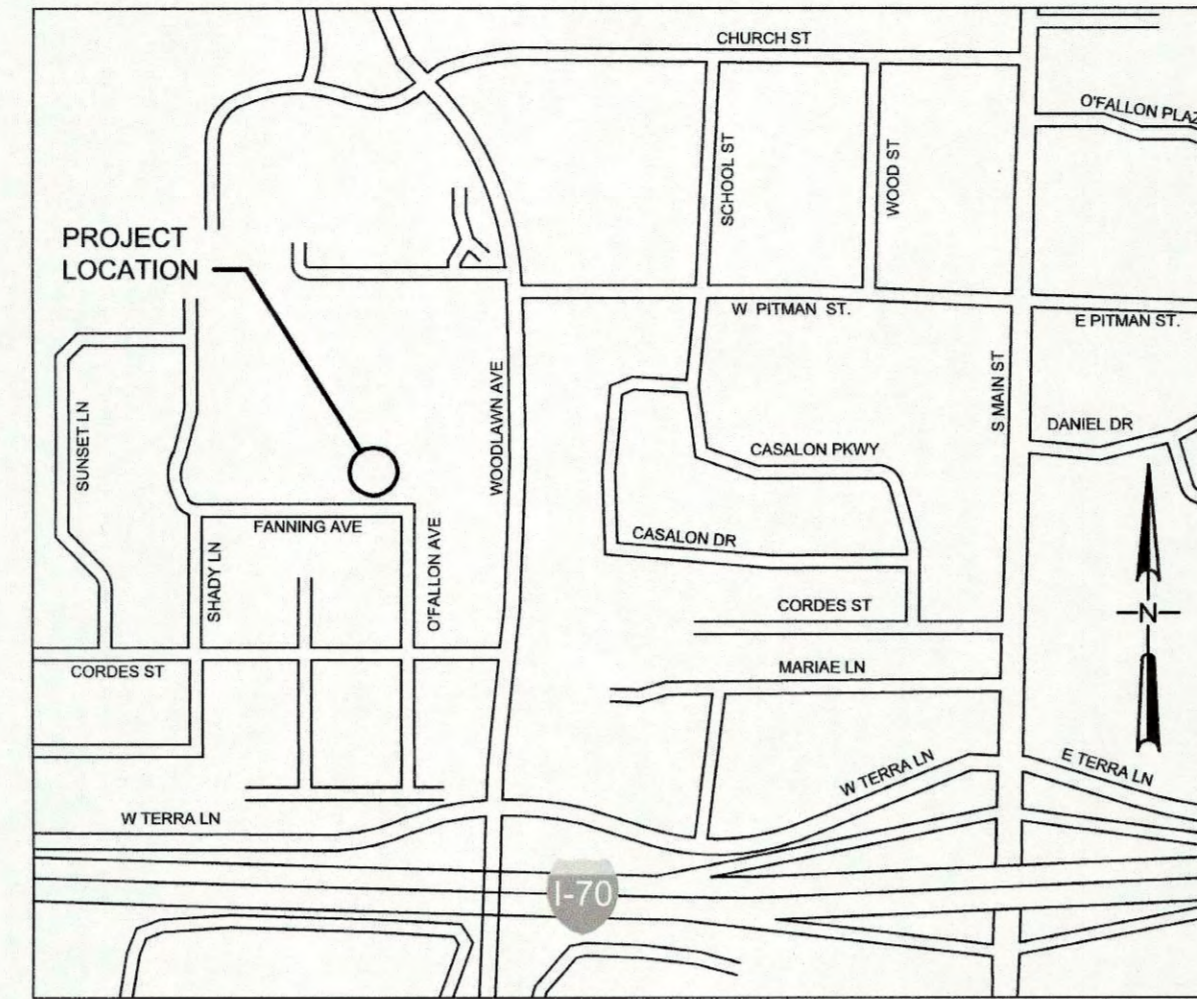


# A SET OF CONSTRUCTION PLANS FOR FANNING AVE. STORM DRAINAGE IMPROVEMENTS



Plan View



LOCATOR MAP

### LEGEND

DESCRIPTION	EXISTING	NEW
RIGHT-OF-WAY		
PROPERTY LINE		
GAS MAIN		
WATER MAIN		
UTILITY POLE (TYPE SPECIFIED)		
GUY WIRE		
UTILITY METER (TYPE SPECIFIED)		
UTILITY VALVE (TYPE SPECIFIED)		
FIRE HYDRANT		
UTILITY MANHOLE (TYPE SPECIFIED)		
UTILITY ACCESS BOX (TYPE SPECIFIED)		
SPRINKLER HEAD		
SPLICE BOX ELECTRIC		
IRRIGATION CONTROL BOX		
SANITARY SEWER MANHOLE		
CHAIN LINK FENCE		
BUSH (SIZE SPECIFIED)		
STREET SIGN		
DRAINAGE DITCH		
STREET OR AREA INLET		
STORM SEWER DESIGNATION		
FLAIRED END SECTION		
PERMANENT UTILITY EASEMENT		
AREA OF DISTURBANCE		
NEW ASPHALT PAVEMENT		
NEW CONCRETE PAVEMENT		
NEW RIP RAP PROTECTION		
EROSION CONTROL CHECK DAM		
EROSION CONTROL INLET PROTECTION		
EROSION CONTROL SILT FENCE		

### ABBREVIATIONS

EXISTING	EX
PIPE/STRUCTURE FLOW LINE	FL
TOP OF STRUCTURE	T
SINGLE CURB INLET	SCI
DOUBLE CURB INLET	DCI
AREA INLET	AI
MANHOLE	MH
STORM	STM
SANITARY	SAN
FLARED END	FE
USE IN PLACE	UIP
TO BE REMOVED	TBR
TO BE ABANDONED AND FILLED	TBA&F

### INDEX OF SHEETS

SHEET NO.	DESCRIPTION
G0-01	TITLE SHEET & LOCATION MAPS
G0-02	AERIAL LOCATION MAP
CIVIL	
C1-01	SITE PLAN
C2-01	EROSION CONTROL PLAN
C3-01	STORM SEWER PROFILES
C4-01	CITY OF O'FALLON STORM SEWER / PAVEMENT DETAILS
C4-02	CITY OF O'FALLON EROSION CONTROL DETAILS
C4-03	ADDITIONAL DETAILS
C4-04	CITY OF O'FALLON GENERAL NOTES
C5-01	EXISTING DRAINAGE AREA MAP
C5-02	PROPOSED DRAINAGE AREA MAP

### BENCHMARK CONTROL

MISSOURI STATE PLANE COORDINATE SYSTEM - EAST ZONE  
(CONVERTED FROM METERS TO FEET)  
HORIZONTAL DATUM:  
NORTH AMERICAN DATUM OF 1983 (NAD83)  
VERTICAL DATUM:  
NORTH AMERICAN VERTICAL DATUM OF 1988 (NAVD88)

-POINT ID: KDG-1 (SET MAG NAIL)  
-NORTH: 1082124.127  
-EAST: 761538.189

BENCHMARK INFORMATION:  
KDG-1 - ELEVATION: 577.35

-POINT ID: KDG-2 (SET MAG NAIL)  
-EAST: 1082116.565  
-NORTH: 761415.263

BENCHMARK INFORMATION:  
KDG-2 - ELEVATION: 578.76

### STORM SEWER MEASUREMENTS

THE EXISTING SEWER LENGTHS, SIZES, FLOWLINES AND DEPTHS OF STRUCTURES AND SEWERS AND LOCATIONS WITH RESPECT TO EXISTING OR PROPOSED EASEMENTS HAVE BEEN MEASURED. THE RESULTS OF THOSE MEASUREMENTS ARE SHOWN ON THIS SET OF RECORD DRAWINGS.

ALL PUBLIC SEWERS ARE LOCATED WITHIN DESIGNATED EXISTING OR PROPOSED EASEMENTS UNLESS OTHERWISE NOTED.

INFORMATION ON PARCELS AND TOPOGRAPHICAL CONTOUR DATA PROVIDED BY ST. CHARLES COUNTY GIS. FURTHER INFORMATION IS AVAILABLE BY CONTACTING:  
THE DEPARTMENT OF INFORMATION SYSTEMS  
201 N. SECOND STREET  
ST. CHARLES MO 63301  
TEL 636-949-7480  
FAX 636-949-7483

CITY OF O'FALLON  
COMMUNITY DEVELOPMENT DEPARTMENT  
ACCEPTED FOR CONSTRUCTION  
BY *Christine M. Beasley* DATE 12/18/2017  
PROFESSIONAL ENGINEER'S SEAL  
INDICATES RESPONSIBILITY FOR DESIGN

HOLD IT ! CALL BEFORE YOU DIG !  
PHONE DIG RITE  
CONTRACTOR TO CONTACT UTILITIES PRIOR TO ANY EXCAVATION OR DEMOLITION FOR THE LOCATION OF ANY PIPES, CABLES, LINES OR MAINS. THE CONTRACTOR SHALL ALSO COORDINATE ANY DISCONNECTION REQUIRED WITH THE VARIOUS UTILITY COMPANIES AND/OR GOVERNMENTAL AGENCIES SERVING THE SITE.  
TOLL FREE 800-344-7483  
800-DIG-RITE

### Utility Contacts

**Sanitary Sewers**  
City of O'Fallon  
100 N. Main St.  
O'Fallon, MO. 63366  
Contact: 636-281-2858

~~Donnell Creek Sanitary District  
3550 Highway 101  
O'Fallon, MO. 63368  
636-441-1244~~

### Water

City of O'Fallon  
100 N. Main St.  
O'Fallon, MO. 63366  
Contact: 636-281-2858

~~Missouri American Water Co.  
727 Craig Rd.  
St. Louis, MO. 63141  
1-866-430-0820~~

~~Public Water Supply District No. 2  
P.O. Box 107  
O'Fallon, MO. 63366  
636-561-3737 Ext. 151~~

### Storm Sewer

City of O'Fallon  
100 N. Main St.  
O'Fallon, MO. 63366  
636-281-2858

### Electric

~~Cross River Electric Co.  
P.O. Box 100  
Troy, MO. 63375-0160  
1-800-392-3709~~

### Gas

Laclede Gas Company  
6400 Graham Road  
St. Louis, MO. 63134  
314-522-2297

### Telephone

Century Tel  
1151 Century Tel Dr.  
Wentzville, MO. 63385  
636-332-7261

### Fire District

O'Fallon Fire Protection District  
119 E. Elm St.  
O'Fallon, MO. 63366  
636-272-3493

~~Wentzville Fire District  
209 West 11th Blvd.  
Wentzville, MO. 63387~~

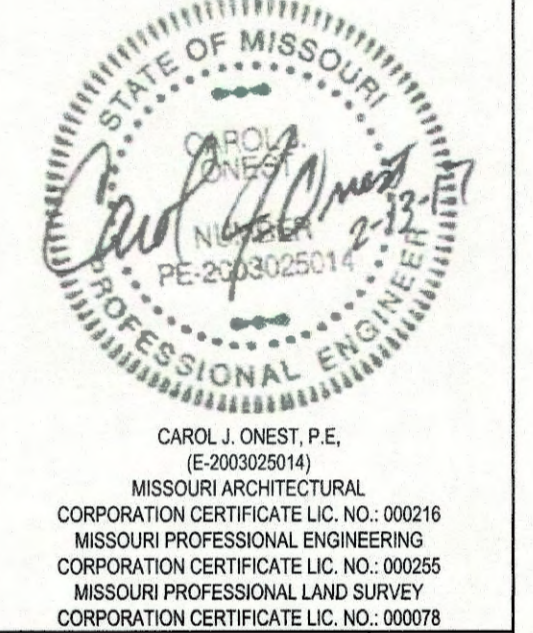
~~Wentzville Fire Protection District  
1385 Newberth Blvd.  
St. Charles, MO. 63304  
636-317-6655~~

FANNING AVENUE  
STORM DRAINAGE  
IMPROVEMENTS

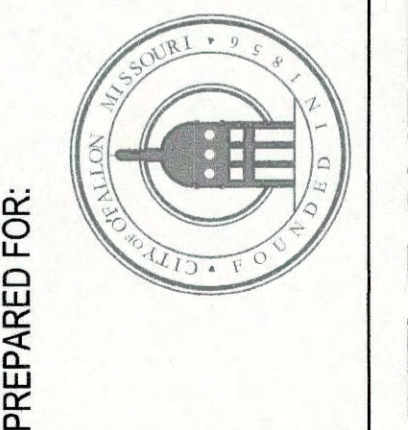
PRIMARY CONTACT  
CAROL J. ONEST, P.E.  
PHONE: 314.434.8898  
EMAIL: CAROL.ONEST@KDGINC.COM

**KdG**  
Kuhlmann design Group, Inc.  
66 Progress Parkway  
St. Louis, Missouri 63043-3706  
Tel: 314.434.8898 Fax: 314.434.8280  
St. Louis, MO • Belleville, IL

kdc JOB #: 160031-0003



CITY OF O'FALLON  
100 NORTH MAIN STREET  
O'FALLON, MO 63366  
PH. (636) 379-5590  
E-MAIL: CCLERCX@O'FALLON.MO.US



PREPARED FOR: City No.

Page No.

GO-01

TITLE SHEET

AS-BUILTS



CHRISTINE M. BEASLEY, PLS  
MO. LICENSE NO. 2002014096  
EXPIRATION: 12/31/2018

*Christine M. Beasley* 11-21-17  
DATE

\* City of O'Fallon Construction work hours per City Ordinance 3429 as shown in Section 500.420 of the Municipal Code of the City of O'Fallon are as follows:

October 1 through May 31  
7:00 A.M. To 7:00 P.M. Monday Through Sunday  
June 1 Through September 30  
6:00 A.M. To 8:00 P.M. Monday Through Friday  
7:00 A.M. to 8:00 P.M. Saturday and Sunday

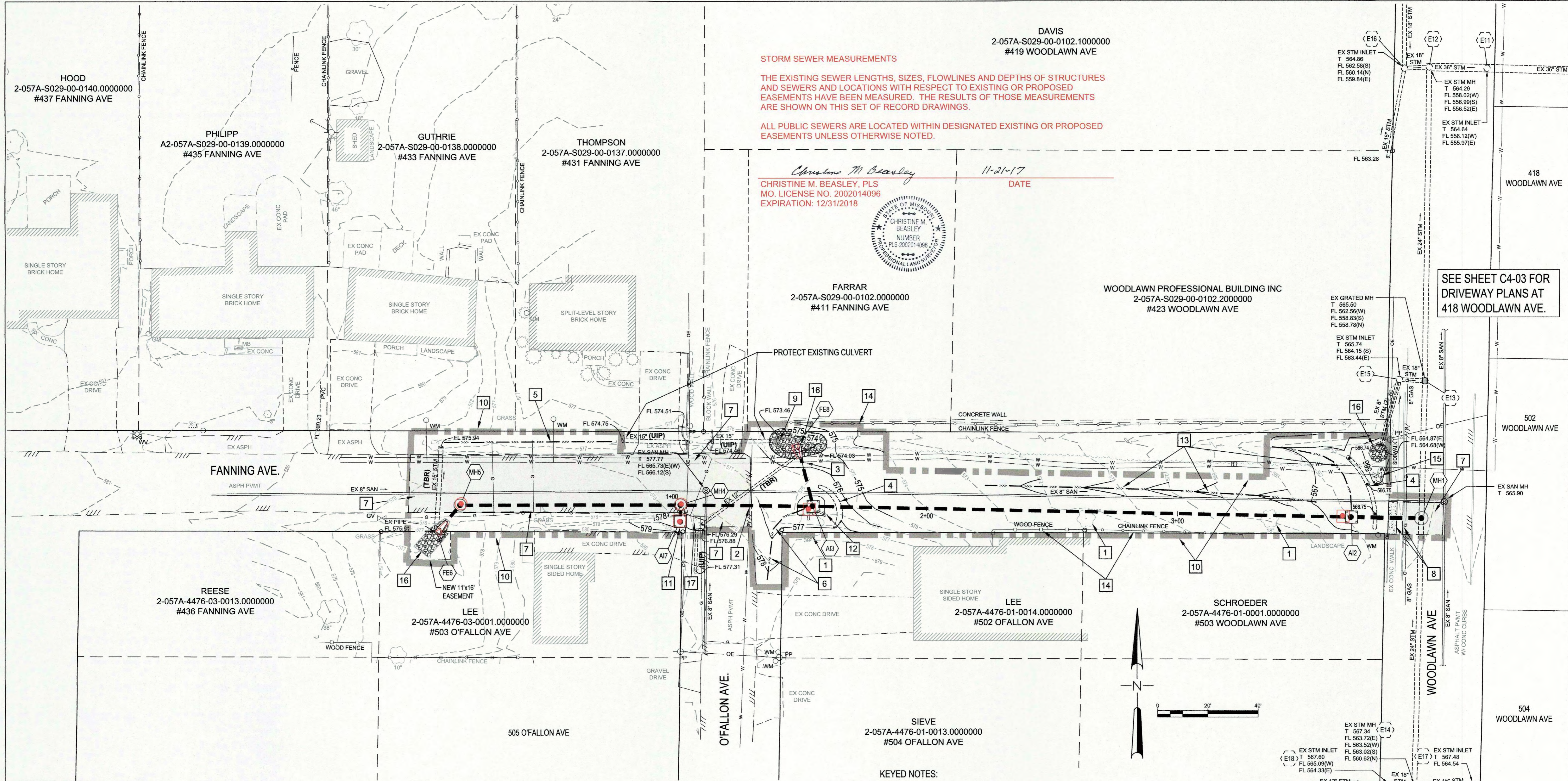
\* The area of this phase of development is N/A  
The area of land disturbance is 0.28 ACRES  
Number of proposed lots is N/A  
Building setback information:

Front N/A  
Side N/A  
Rear N/A

\* The estimated sanitary flow in gallons per day is N/A

\* Parking calculations N/A

\* Tree preservation calculations N/A



**STORM SEWER MEASUREMENTS**

THE EXISTING SEWER LENGTHS, SIZES, FLOWLINES AND DEPTHS OF STRUCTURES AND SEWERS AND LOCATIONS WITH RESPECT TO EXISTING OR PROPOSED EASEMENTS HAVE BEEN MEASURED. THE RESULTS OF THOSE MEASUREMENTS ARE SHOWN ON THIS SET OF RECORD DRAWINGS.

ALL PUBLIC SEWERS ARE LOCATED WITHIN DESIGNATED EXISTING OR PROPOSED EASEMENTS UNLESS OTHERWISE NOTED.

Christine M. Beasley  
 11-21-17  
 CHRISTINE M. BEASLEY, PLS  
 MO. LICENSE NO. 2002014096  
 EXPIRATION: 12/31/2018



SEE SHEET C4-03 FOR DRIVEWAY PLANS AT 418 WOODLAWN AVE.

- GENERAL NOTES:**
- UNDERGROUND UTILITIES HAVE BEEN PLOTTED FROM AVAILABLE INFORMATION AND THEREFORE THEIR LOCATIONS MUST BE CONSIDERED APPROXIMATE ONLY. THE VERIFICATION OF THE LOCATION OF ALL UNDERGROUND UTILITIES, EITHER SHOWN OR NOT SHOWN ON THESE PLANS SHALL BE THE RESPONSIBILITY OF THE CONTRACTOR, AND SHALL BE LOCATED PRIOR TO GRADING OR CONSTRUCTION OF IMPROVEMENTS.
  - ALL INSTALLATIONS AND CONSTRUCTION SHALL CONFORM TO THE APPROVED ENGINEERING DRAWINGS. HOWEVER, IF THE OWNER CHOOSES TO MAKE MINOR MODIFICATIONS IN DESIGN AND/OR SPECIFICATIONS DURING CONSTRUCTION, HE/SHE SHALL MAKE SUCH CHANGES AT HIS/HER OWN RISK.
  - ALL IMPROVEMENTS, INCLUDING STORM SEWER STRUCTURES, SPECIAL PIPE AND PAVEMENT, SHALL BE IN ACCORDANCE CITY OF O'FALLON STANDARDS AND ORDINANCES. SEE DETAILS ON SHEETS C4-01 TO C4-03 PROVIDED BY THE CITY OF O'FALLON.
  - CONTRACTOR SHALL FOLLOW MSD SPECIFICATIONS FOR CONNECTIONS TO THE EXISTING SYSTEM. STRUCTURE ELEVATIONS SHOWN ARE BASED ON AVAILABLE DATA AND FIELD SURVEY. CONTRACTOR SHALL OBTAIN APPROVAL FROM THE CITY FOR MODIFICATIONS TO STANDARD AREA INLET DETAIL.
  - THE CONTRACTOR SHALL PROVIDE ANY CONSTRUCTION SIGNAGE, BARRIERS AND TRAFFIC CONTROL DEVICES REQUIRED FOR ANY WORK PROPOSED WITHIN THE RIGHT OF WAY, INCLUDING SIDEWALKS.
  - ALL TRASH AND DEBRIS ON-SITE, EITHER EXISTING OR FROM CONSTRUCTION, MUST BE REMOVED AND PROPERLY DISPOSED OF OFF-SITE. TREES, ORGANIC DEBRIS, RUBBLE, FOUNDATIONS AND OTHER DELETERIOUS MATERIAL SHALL BE REMOVED FROM THE SITE AND DISPOSED IN COMPLIANCE WITH ALL APPLICABLE LAWS AND REGULATIONS.
  - CONTRACTOR SHALL MAINTAIN ALL SILTATION CONTROL MEASURES AND SHALL ENSURE THAT ALL PUBLIC ROADS ARE FREE FROM DUST, MUD AND/OR DEBRIS THAT MAY BE PRODUCED AS A DIRECT RESULT OF CONSTRUCTION OPERATIONS ON THIS PROJECT.
  - TEMPORARY SILTATION CONTROL MEASURES SHALL BE MAINTAINED UNTIL VEGETATIVE COVER IS ESTABLISHED AT A SUFFICIENT DENSITY TO PROVIDE EROSION CONTROL ON THE SITE.

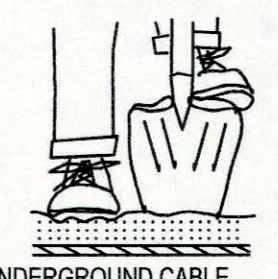
- SILTATION CONTROL SHALL BE PROVIDED AROUND ALL OPEN SEWER INLETS AND SHALL REMAIN UNTIL THE DISTURBED DRAINAGE AREAS HAVE BEEN PROPERLY STABILIZED.
- ALL DISTURBED AREAS SHALL BE SODDED.
- PROPERTY INFORMATION SHOWN IS BASED ON RECORD INFORMATION AND ST. CHARLES COUNTY GIS DATA. NO BOUNDARY SURVEYS WERE COMPLETED.
- CONTRACTOR SHALL LOCATE, PROTECT AND PRESERVE ALL WATER, SANITARY, GAS AND UTILITY SERVICE LINES AND MAINS.
- CONTRACTOR SHALL MAINTAIN ACCESS TO ALL DRIVEWAYS.
- SEWER RUNS CROSSING WATER MAINS SHALL BE LAID TO PROVIDE A MINIMUM VERTICAL DISTANCE OF EIGHTEEN INCHES BETWEEN THE OUTSIDE OF THE WATER MAIN AND THE OUTSIDE OF THE SEWER. AT CROSSINGS, THE FULL LENGTH OF PIPE SHALL BE LOCATED SO BOTH JOINTS WILL BE AS FAR FROM THE WATER PIPE AS POSSIBLE, BUT IN NO CASE LESS THAN TEN FEET OR CENTERED ON A 20-FOOT PIPE. IN AREAS WHERE THE RECOMMENDED SEPARATIONS CANNOT BE OBTAINED, THE SEWER SHALL BE CONSTRUCTED OF SPECIAL, AND SHALL BE MECHANICAL OR MANUFACTURED RESTRAINED JOINT PIPE, FUSION WELDED, OR CASED IN A CONTINUOUS CASING THAT EXTENDS NO LESS THAN TEN FEET ON BOTH SIDES OF THE CROSSING. SPECIAL STRUCTURAL SUPPORT OF THE PIPE MAY BE REQUIRED. CASING PIPE MUST BE A MATERIAL THAT IS APPROVED FOR USE AS WATER MAIN. CONVENTIONAL POURED CONCRETE IS NOT AN ACCEPTABLE ENCASEMENT.
- ALL SIDEWALK REMOVAL AND REPLACEMENT SHALL EXTEND TO NEAREST JOINT.
- MANHOLE COVERS FOR THE CITY'S STORM SEWER SHALL COMPLY WITH JOB SPECIAL PROVISION SECTION G FOR STORM SEWER CONSTRUCTION REQUIREMENTS, INCLUDING CITY LOGO.

- KEYED NOTES:**
- TREE TO BE REMOVED
  - MAINTAIN 18" CLEARANCE BETWEEN STORM SEWER AND EXISTING WATER MAIN, STORM SEWER ABOVE WATER MAIN.
  - MAINTAIN 12" CLEARANCE BETWEEN STORM SEWER AND EXISTING WATER MAIN, STORM SEWER ABOVE WATER MAIN.
  - EARTH BERM TO DIRECT RUNOFF TO ADJACENT NEW INLET, SEE DETAIL ON SHEET C4-03
  - AREA TO BE GRADED TO DRAIN RUNOFF TO THE EAST TO EXISTING DRIVEWAY CULVERT
  - AREA WITHIN RIGHT OF WAY TO BE GRADED TO DRAIN TO INLET A13
  - TEMPORARY OPENING IN ROADWAY PAVEMENT, SEE DETAIL ON SHEET C4-01
  - REMOVE AND REPLACE CONCRETE SIDEWALK AND CURB TO NEAREST JOINTS, SEE DETAIL ON SHEET C4-01
  - RIP RAP INLET - OUTLET PROTECTION, SEE DETAIL ON SHEET C4-01 & C4-02
  - LIMITS OF DISTURBANCE LINE (TYP)
  - SHALLOW AREA INLET STRUCTURE, SEE DETAIL ON SHEET C4-03
  - REMOVE LANDSCAPE WALL
  - GRADE TO DRAIN TO INLET A12
  - PROTECT FENCES
  - PROTECT FIRE HYDRANT
  - FLARED END SECTION AND INLET PROTECTION PER CITY DETAIL, SEE SHEET C4-01
  - PROTECT STREET SIGN

UNDERGROUND UTILITIES HAVE BEEN PLOTTED FROM AVAILABLE INFORMATION AND THEREFORE THEIR LOCATIONS MUST BE CONSIDERED APPROXIMATE ONLY. THE VERIFICATION OF THE LOCATION OF ALL UNDERGROUND UTILITIES, EITHER SHOWN OR NOT SHOWN ON THIS PLAN, SHALL BE THE RESPONSIBILITY OF THE CONTRACTOR AND SHALL BE LOCATED PRIOR TO EXCAVATION, GRADING, OR CONSTRUCTION.

**HOLD IT! CALL BEFORE YOU DIG!**

PHONE DIG RITE  
 CONTRACTOR TO CONTACT UTILITIES PRIOR TO ANY EXCAVATION OR DEMOLITION FOR THE LOCATION OF ANY PIPES, CABLES, LINES OR MAINS. THE CONTRACTOR SHALL ALSO COORDINATE ANY DISCONNECTION REQUIRED WITH THE VARIOUS UTILITY COMPANIES AND/OR GOVERNMENTAL AGENCIES SERVING THE SITE.  
 TOLL FREE 800-344-7483  
 800-DIG-RITE



**AS-BUILTS**

**FANNING AVENUE STORM DRAINAGE IMPROVEMENTS**

PRIMARY CONTACT: CAROL J. O'NEST, P.E. PHONE: 314.434.8280 EMAIL: CAROL.O'NEST@KDC.COM

**KdG Kuhlmann design Group, Inc.**  
 66 Progress Parkway  
 St. Louis, Missouri 63043-3706  
 Tel: 314.434.8898 Fax: 314.434.8280  
 St. Louis, MO • Belleville, IL  
 kdc JOB #: 160031-0003

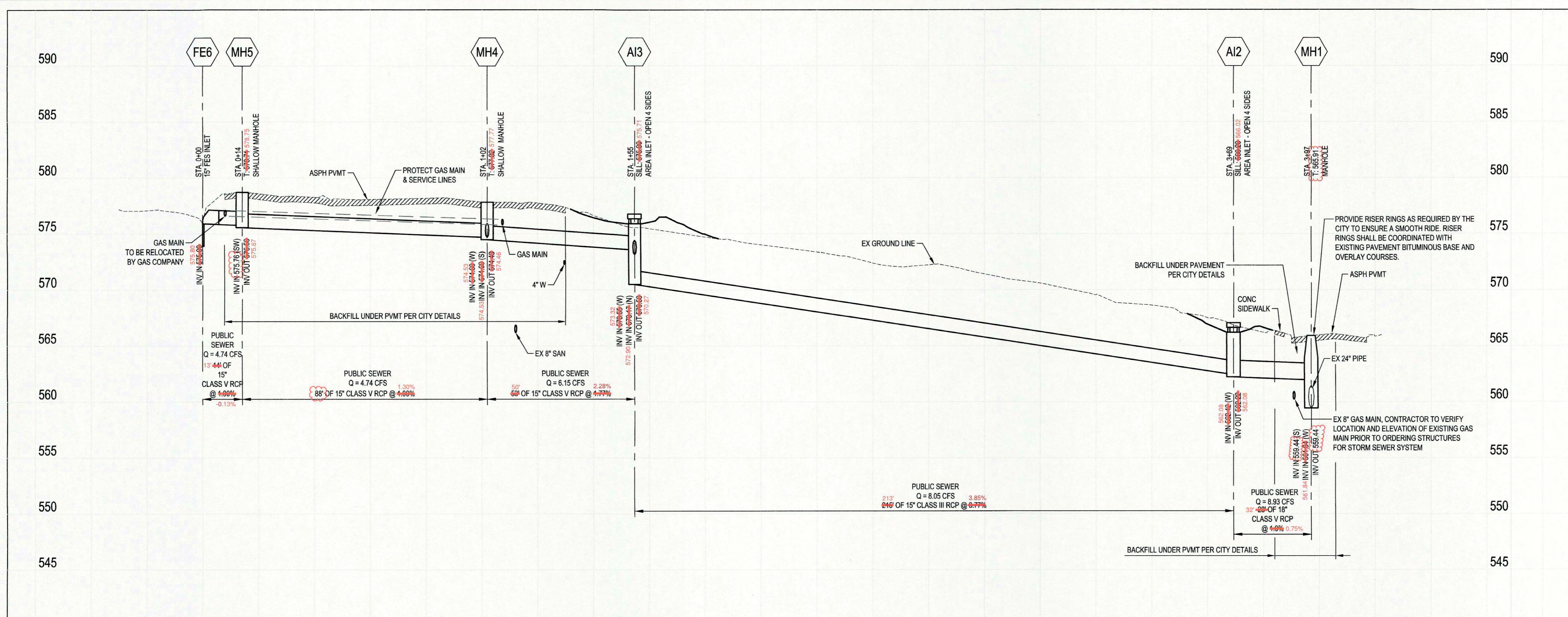
**CITY OF O'FALLON**  
 100 NORTH MAIN STREET  
 O'FALLON, MO 63366  
 PH: (636) 379-5590  
 E-MAIL: CCLERCX@O'FALLON.MO.US

MISSOURI ARCHITECTURAL CORPORATION CERTIFICATE LIC. NO.: 000216  
 MISSOURI PROFESSIONAL ENGINEERING CORPORATION CERTIFICATE LIC. NO.: 000255  
 MISSOURI PROFESSIONAL LAND SURVEY CORPORATION CERTIFICATE LIC. NO.: 000078

**SITE PLAN**

PREPARED FOR: **CITY OF O'FALLON**

City No. \_\_\_\_\_  
 Page No. **C1-01**



**STORM SEWER MEASUREMENTS**

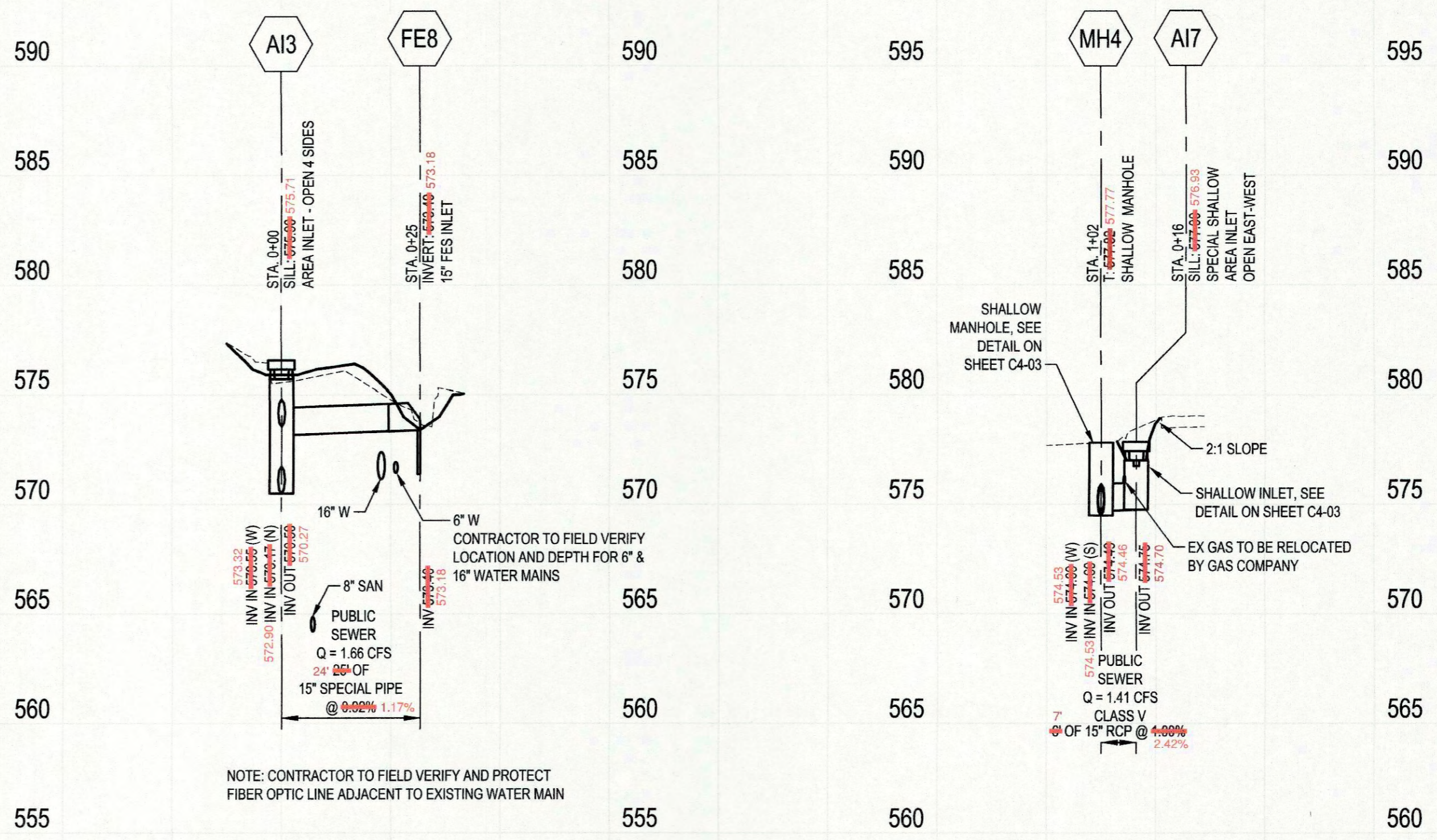
THE EXISTING SEWER LENGTHS, SIZES, FLOWLINES AND DEPTHS OF STRUCTURES AND SEWERS AND LOCATIONS WITH RESPECT TO EXISTING OR PROPOSED EASEMENTS HAVE BEEN MEASURED. THE RESULTS OF THOSE MEASUREMENTS ARE SHOWN ON THIS SET OF RECORD DRAWINGS.

ALL PUBLIC SEWERS ARE LOCATED WITHIN DESIGNATED EXISTING OR PROPOSED EASEMENTS UNLESS OTHERWISE NOTED.

*Christine M. Beasley* 11-21-17  
CHRISTINE M. BEASLEY, PLS  
MO. LICENSE NO. 2002014096  
EXPIRATION: 12/31/2018



**NOTE:**  
UNDERGROUND UTILITIES HAVE BEEN PLOTTED FROM AVAILABLE INFORMATION AND THEREFORE THEIR LOCATIONS MUST BE CONSIDERED APPROXIMATE ONLY. THE VERIFICATION OF THE LOCATION OF ALL UNDERGROUND UTILITIES, EITHER SHOWN OR NOT SHOWN ON THIS PLAN, SHALL BE THE RESPONSIBILITY OF THE CONTRACTOR AND SHALL BE LOCATED PRIOR TO EXCAVATION, GRADING, ORDERING PRECAST STRUCTURES OR CONSTRUCTION.



**NOTE:** CONTRACTOR TO FIELD VERIFY AND PROTECT FIBER OPTIC LINE ADJACENT TO EXISTING WATER MAIN

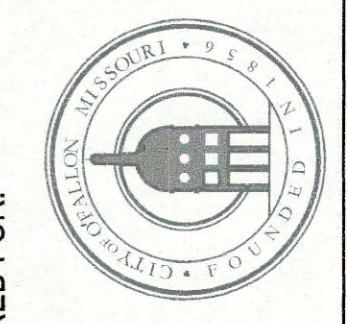
**AS-BUILTS**

**FANNING AVENUE  
STORM DRAINAGE  
IMPROVEMENTS**

**KdG**  
Kuhlmann design Group, Inc.  
66 Progress Parkway  
St. Louis, Missouri 63043-3706  
Tel: 314-434-8898 Fax: 314-434-8280  
St. Louis, MO • Belleville, IL



**CITY OF O'FALLON**  
100 NORTH MAIN STREET  
O'FALLON, MO 63366  
PH: (636) 379-5590  
E-MAIL: CC.LERCY@OFALLON.MO.US



City No.  
Page No.  
**C3-01**

**STORM SEWER PROFILES**