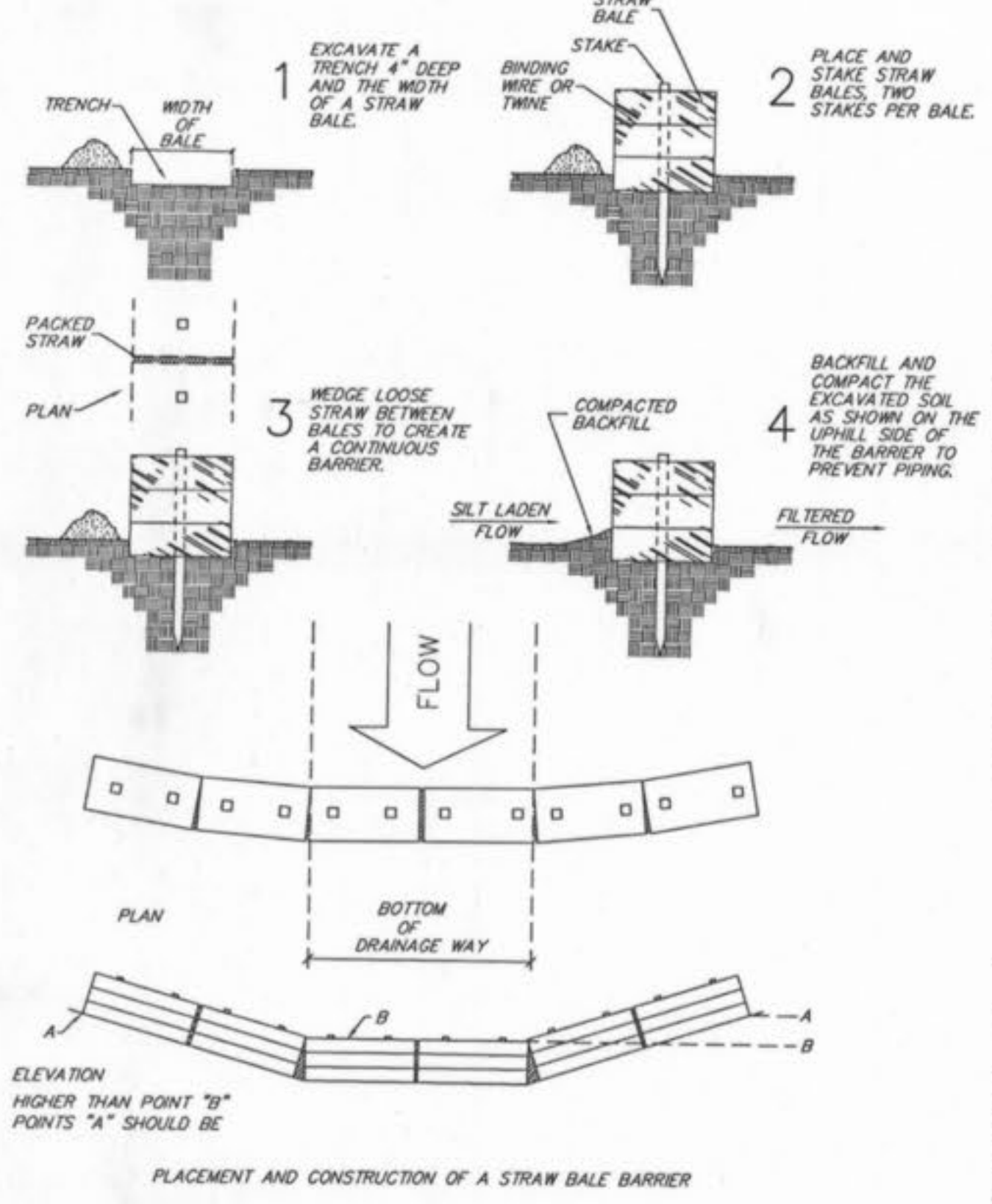
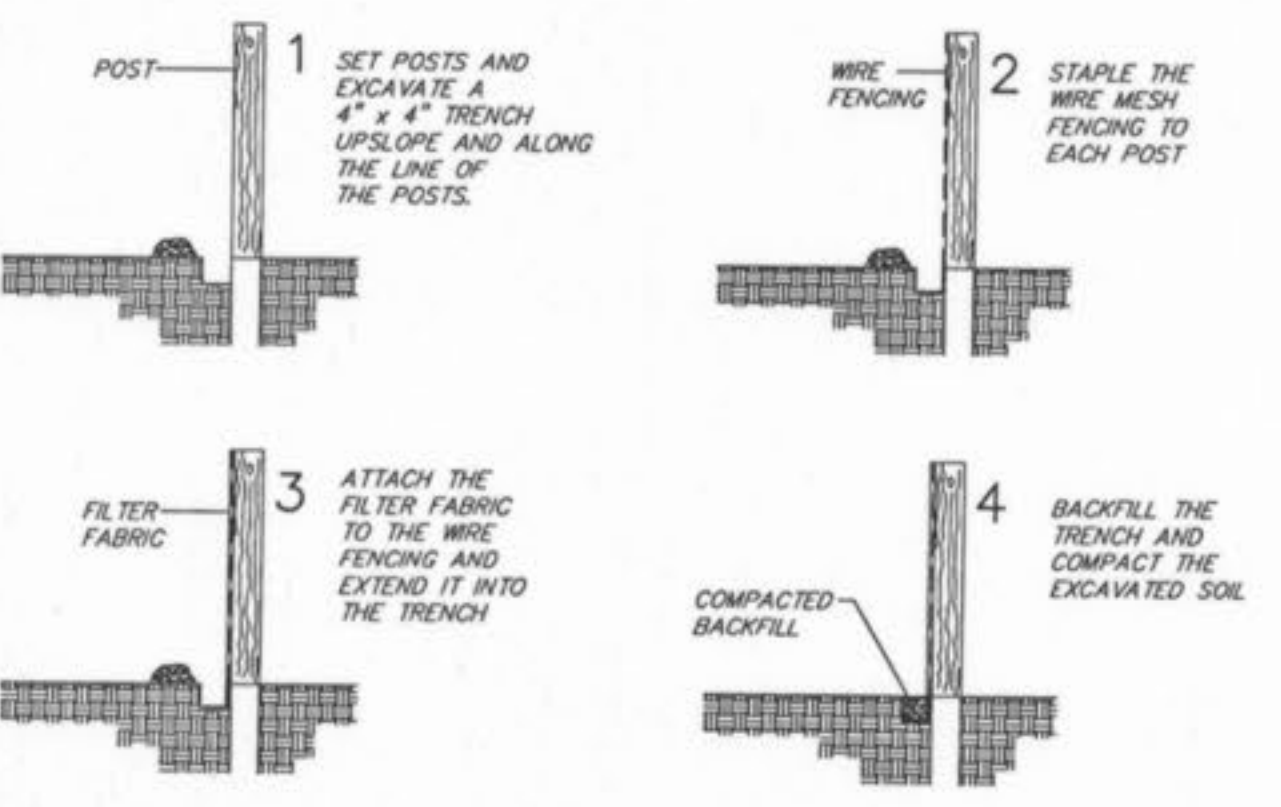


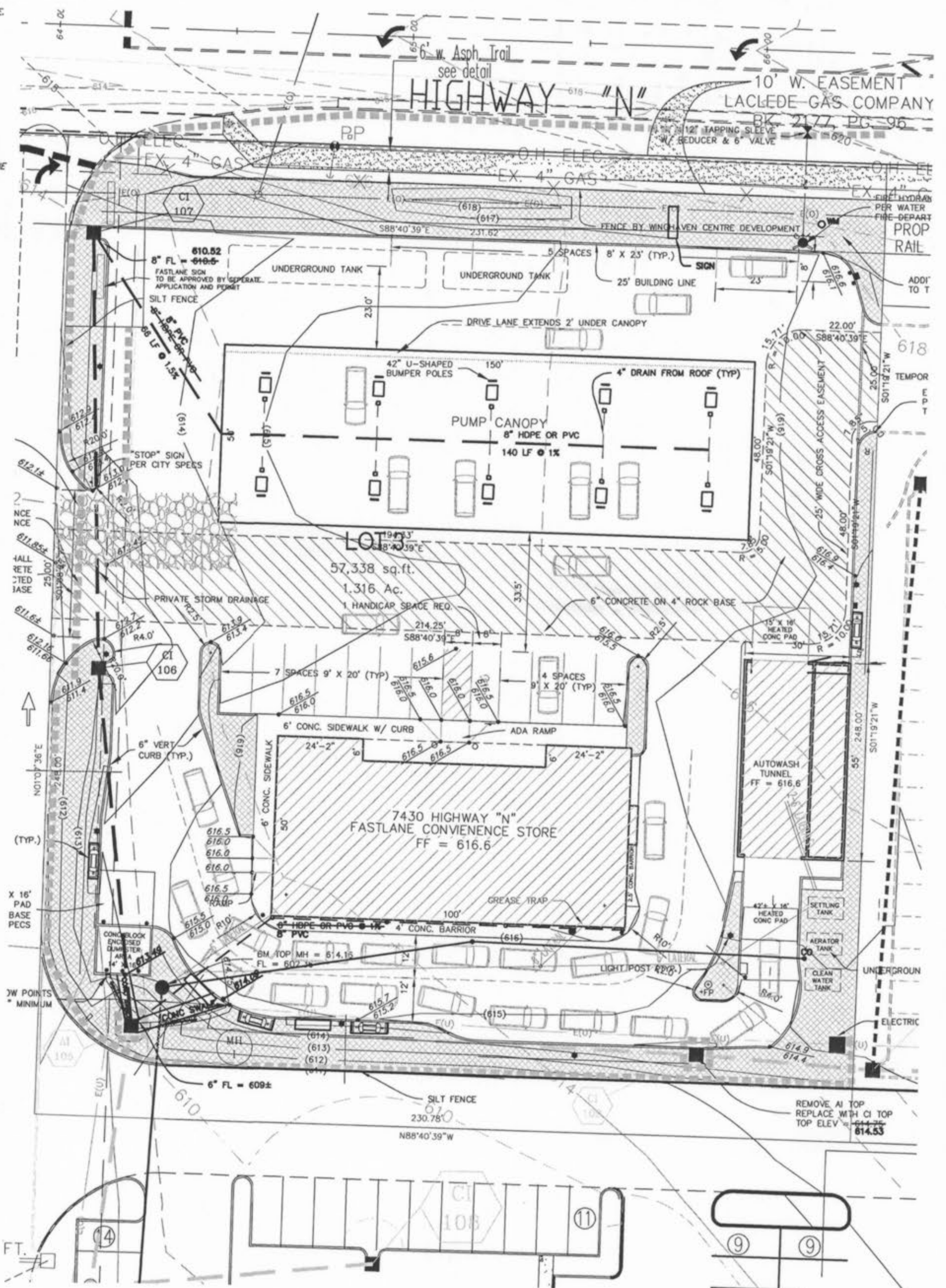
STRAW BALES BARRIERS  
FOR URBAN DEVELOPMENT SITES  
APPENDIX C



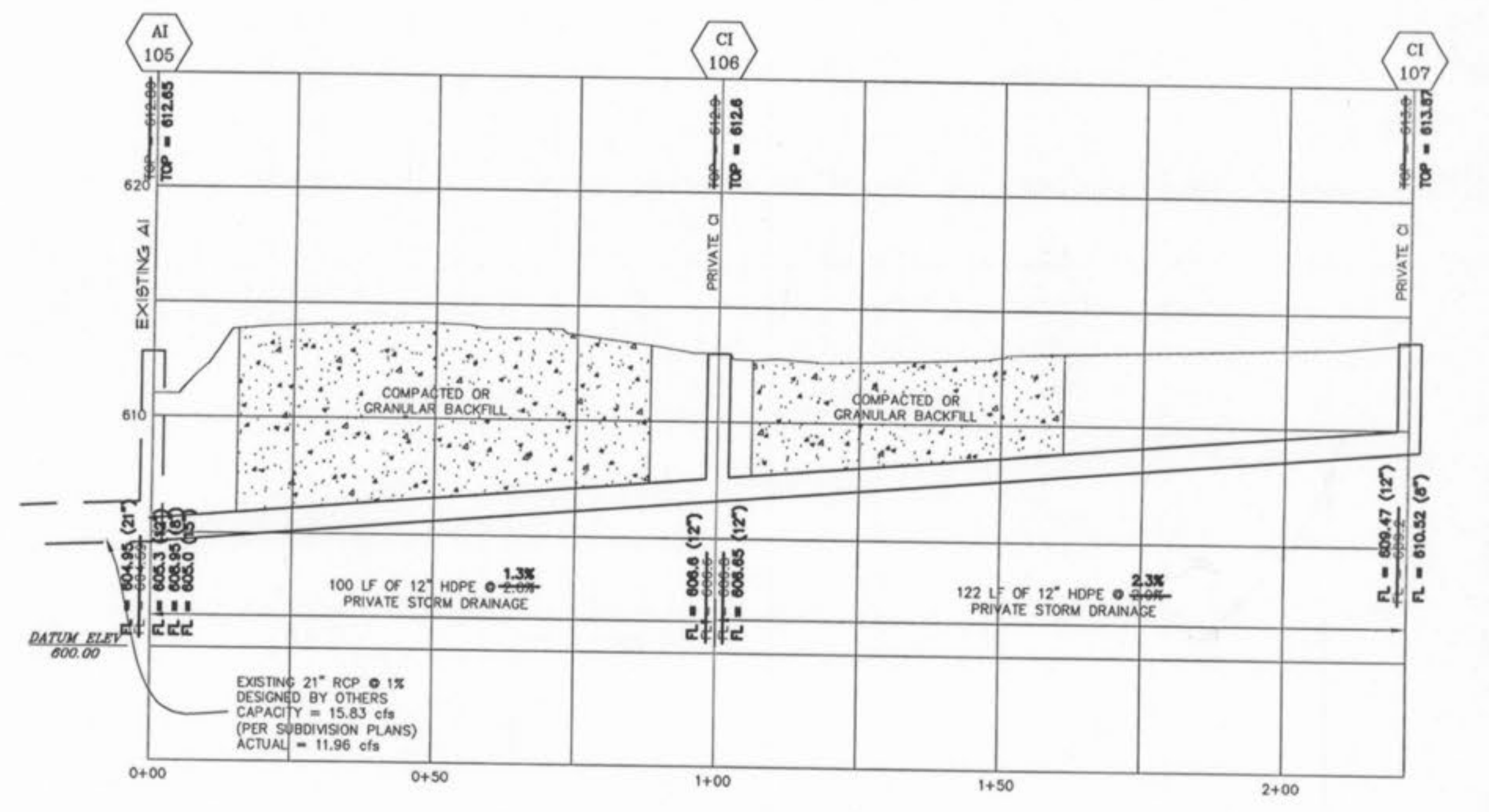
All erosion control devices shall meet the St. Charles County Soil and Water Conservation District Erosion and Sediment Control guidelines.  
Grading shall operate under the current land disturbance permit issued for the subdivision.



1. FILTER BARRIERS SHALL BE INSPECTED IMMEDIATELY AFTER EACH RAINFALL AND AT LEAST DAILY DURING PROLONGED RAINFALL. ANY REQUIRED REPAIRS SHALL BE MADE IMMEDIATELY.
2. SHOULD THE FABRIC DECOMPOSE OR BECOME INEFFECTIVE PRIOR TO THE END OF THE EXPECTED USABLE LIFE AND THE BARRIER STILL BE NECESSARY, THE FABRIC SHALL BE REPLACED PROMPTLY.
3. SEDIMENT DEPOSITS SHOULD BE REMOVED AFTER EACH STORM EVENT. THEY MUST BE REMOVED WHEN DEPOSITS REACH APPROXIMATELY HALF THE HEIGHT OF THE BARRIER.
4. ANY SEDIMENT REMAINING IN PLACE AFTER THE SILT FENCE OR FILTER BARRIER IS NO LONGER REQUIRED SHALL BE DRESSED TO CONFORM WITH THE EXISTING GRADE, PREPARED AND SEEDDED.



A (TO CI 107)	(.28 AC)(3.85) = 1.00 CFS
OFF-SITE (TO CI 107)	(.5 AC)(3.85) = 1.93 CFS
B (FROM CANOPY)	(.17 AC)(3.85) = 0.66 CFS
C (TO CI 106)	(.33 AC)(3.85) = 1.27 CFS
D (FROM BUILDING)	(.11 AC)(3.85) = 0.44 CFS
E (TO AI 105)	(.07 AC)(3.85) = 0.27 CFS
F (TO CI 109)	(.18 AC)(3.85) = 0.69 CFS



NOTE: THIS SITE PLAN DESIGN IS BASED ON INFORMATION PROVIDED BY AN OVERALL SITE PLAN AND SURVEY BY MUSLER ENGINEERING COMPANY REV. SEPT 5, 2002.

THE UNDERGROUND UTILITIES SHOWN HEREON WERE PLOTTED FROM AVAILABLE INFORMATION AND DO NOT NECESSARILY REFLECT THE ACTUAL EXISTENCE, NONEXISTENCE, SIZE, TYPE, NUMBER OR LOCATION OF THESE OR OTHER UTILITIES. THE CONTRACTOR SHALL BE RESPONSIBLE FOR VERIFYING THE ACTUAL LOCATION OF ALL UNDERGROUND UTILITIES, SHOWN OR NOT SHOWN, AND SAID UTILITIES SHALL BE LOCATED IN THE FIELD PRIOR TO ANY GRADING, EXCAVATION OR CONSTRUCTION OF IMPROVEMENTS. THESE PROVISIONS SHALL IN NO WAY ABSOLVE ANY PARTY FROM COMPLYING WITH THE UNDERGROUND FACILITY SAFETY AND DAMAGE PREVENTION ACT, CHAPTER 319, RSMo.