

SEE SHEET 6 OF 29

REVISED 12-11-96 PER CITY COMMENTS
REVISED 12-18-96 PER CITY COMMENTS
REVISED 1-2-97 PER CITY COMMENTS
REVISED 1-30-97 PER CITY COMMENTS
REVISED 7-29-97 PER CITY COMMENTS



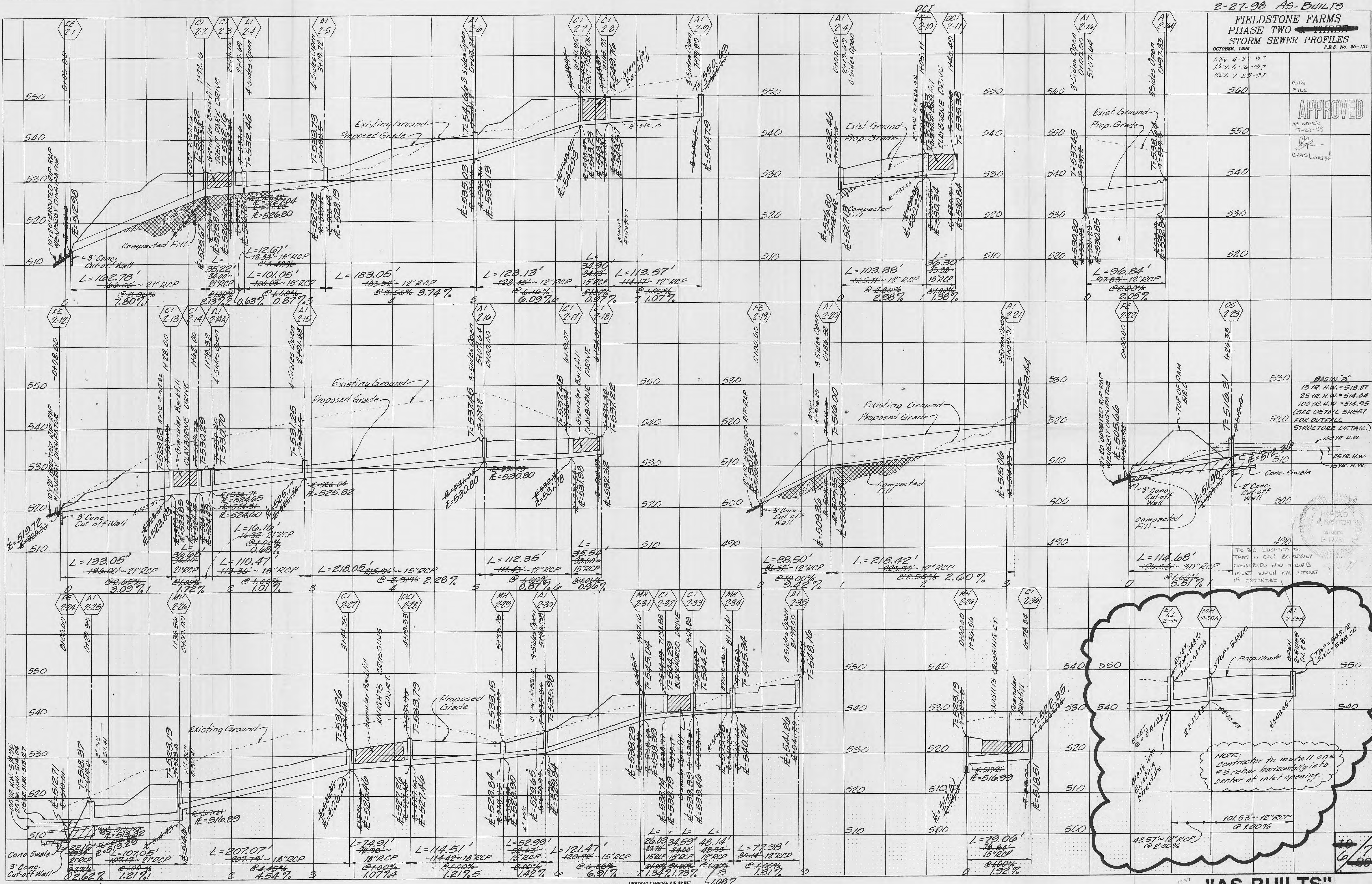
FIELDSTONE FARMS
PHASE TWO
STORM SEWER PROFILES

OCTOBER, 1998
REV. 4-30-97
REV. 6-10-97
REV. 7-28-97
P.R.S. No. 90-131

ENG. FILE
APPROVED
AS NOTED
5-20-99
CHIPS LAMBERT

DATE
BY
FINAL SURVEY PLOTTED TEMPLATE AREA CHECKED

DATE
BY
ORIGINAL SURVEY PLOTTED TEMPLATE AREA CHECKED



TO BE LOCATED SO THAT IT CAN BE EASILY CONVERTED INTO CURBS INLET WHEN THE STREET IS EXTENDED

NOTE: Contractor to install one #5 rebar horizontally into center of inlet opening.