

RECEIVED

NOV 27 2019

BY: *[Signature]*

O'FALLON FORT ZUMWALT PARK LAKE WHETSEL DESIGN AND CONSTRUCTION

CITY OF O'FALLON PARKS AND RECREATION
100 NORTH MAIN STREET
O'FALLON, MO 63366
314-379-5590



7722 Big Bend Blvd.
St. Louis, MO 63119
t. 314.644.5700

BID DOCUMENTS
ISSUE DATE - 2/22/2019

ADDENDUM #1 - 3/6/2019

DRAWING INDEX:

COVER SHEET

- L-001 NOTES AND LEGENDS
- LD-100 EXISTING SITE PLAN
- LD-101 TREE PROTECTION AND DEMO PLAN
- L-110 MATERIALS KEY PLAN
- C-1.0 SPECIFICATIONS
- C-2.0 SITE PLAN
- C-2.1 STORM PROFILES
- C-3.0 GRADING PLAN
- C-4.0 DRAINAGE AREA MAP
- C-5.0 DETAILS
- C-6.0 DETAILS
- L-140 TREE PLANTING PLAN
- L-150 UNDERSTORY PLANTING PLAN
- L-500 DETAILS
- L-501 DETAILS
- L-502 DETAILS
- L-503 DETAILS
- L-504 DETAILS
- L-520 PLANTING DETAILS

"AS BUILT" LAKE WHETSEL PARK CITY OF O'FALLON ST. CHARLES COUNTY, MISSOURI

SURVEYOR'S NOTES:

SITE DATUM ELEVATION: HORIZONTAL AND VERTICAL CONTROL HAS BEEN ESTABLISHED BY GPS OBSERVATION USING MDOOT NETWORK, GEOID 12B ADJUSTMENTS AND NAVD88 IN FEET.

BASIS OF BEARING: THE BEARING SYSTEM HAS BEEN ADOPTED FROM GPS OBSERVATION, USING THE MISSOURI DEPARTMENT OF TRANSPORTATION'S NETWORK OF CONTIGUOUSLY OPERATING REFERENCE SYSTEMS, ADJUSTED TO THE NAD83 STATE PLANE COORDINATE SYSTEM FOR THE STATE OF MISSOURI, EAST ZONE.

THE FIELDWORK WAS COMPLETED OCTOBER 7, 2019.

GATEWAY LAND SERVICES, INC. (AGENT)

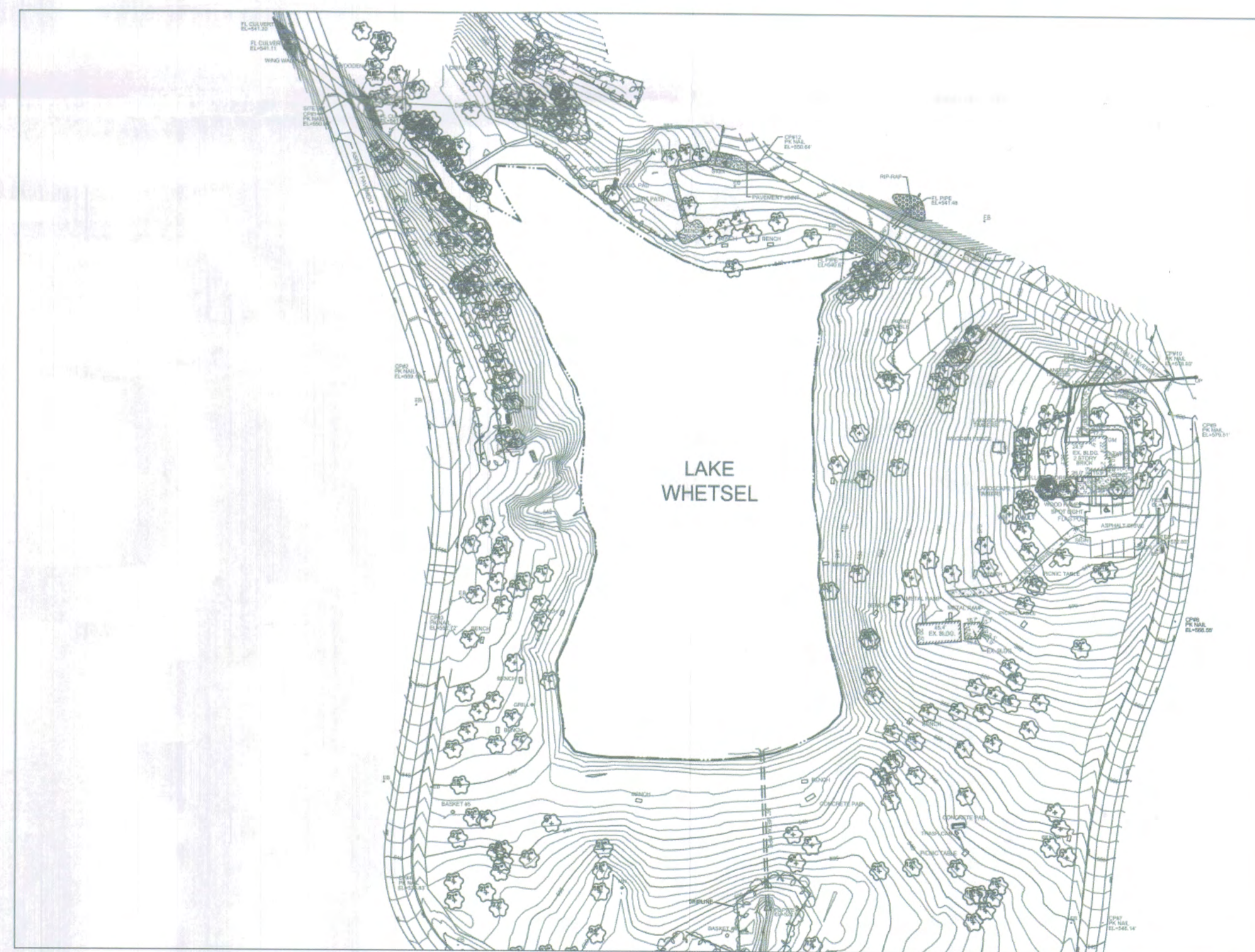
BY *[Signature]*
(AGENT) JAMES L. DEGENHARDT



James L. Degenhardt, P.L.S.
License No: PLS-2649



EXISTING SITE PHOTO



VICINITY MAP:
SCALE: 1"=100'



MAINTENANCE SCHEDULE

SILTATION DEPOSIT CALCULATION

TOTAL VOLUME OF SILT DEPOSITED SINCE 1992: 5346 CUBIC YARDS OR 205.6 CY/YEAR

TOTAL ACREAGE DRAINING TO LAKE: 129.1 ACRES

TOTAL ACREAGE DRAINING VIA FOREBAY #1: 98.9 ACRES

TOTAL ACREAGE DRAINING VIA FOREBAY #2: 17.7 ACRES

TOTAL VOLUME OF FOREBAY #1: 1047.20 CUBIC YARDS

TOTAL VOLUME OF FOREBAY #2: 281 CUBIC YARDS

FOREBAY #1

(98.9 ACRES/129.1 ACRES) x 205.6 CUBIC YARDS=157.5 CUBIC YARDS/YEAR

YEARS TO REACH CAPACITY OF SILT= 1047.2 CY/157.5 CY= **6.6 YEARS**

FOREBAY #2

(17.7 ACRES/129.1 ACRES) x 205.6 CUBIC YARDS=28.2 CUBIC YARDS/YEAR

YEARS TO REACH CAPACITY OF SILT= 281 CY/28.2= **10 YEARS**

SUMMARY:

REMOVE SILT FROM FOREBAY #1 EVERY 6 YEARS

REMOVE SILT FROM FOREBAY #2 EVERY 10 YEARS

EARTHWORK NOTES

DATED: 2/22/2019

BULK CUT 16,490± CUBIC YARD

BULK FILL 3,200 ± CUBIC YARD

(15% COMPACTION INCLUDED)

NET CUT 13,290 ± CUBIC YARD

* NO EXPANSION FACTOR CONSIDERED

THE ENGINEER HAS CALCULATED THE ABOVE QUANTITIES OF EARTHWORK TO BE REGARDED AS AN ESTIMATE OF THE BULK MOVEMENT OR REDISTRIBUTION OF SOILS ON THIS PROJECT. AS AN ESTIMATE, THESE QUANTITIES ARE INTENDED FOR GENERAL USE, AND THE ENGINEER ASSUMES NO LIABILITY FOR COST OVERRUNS DUE TO EXCESS EXCAVATED MATERIALS OR SHORTAGES OF FILL.

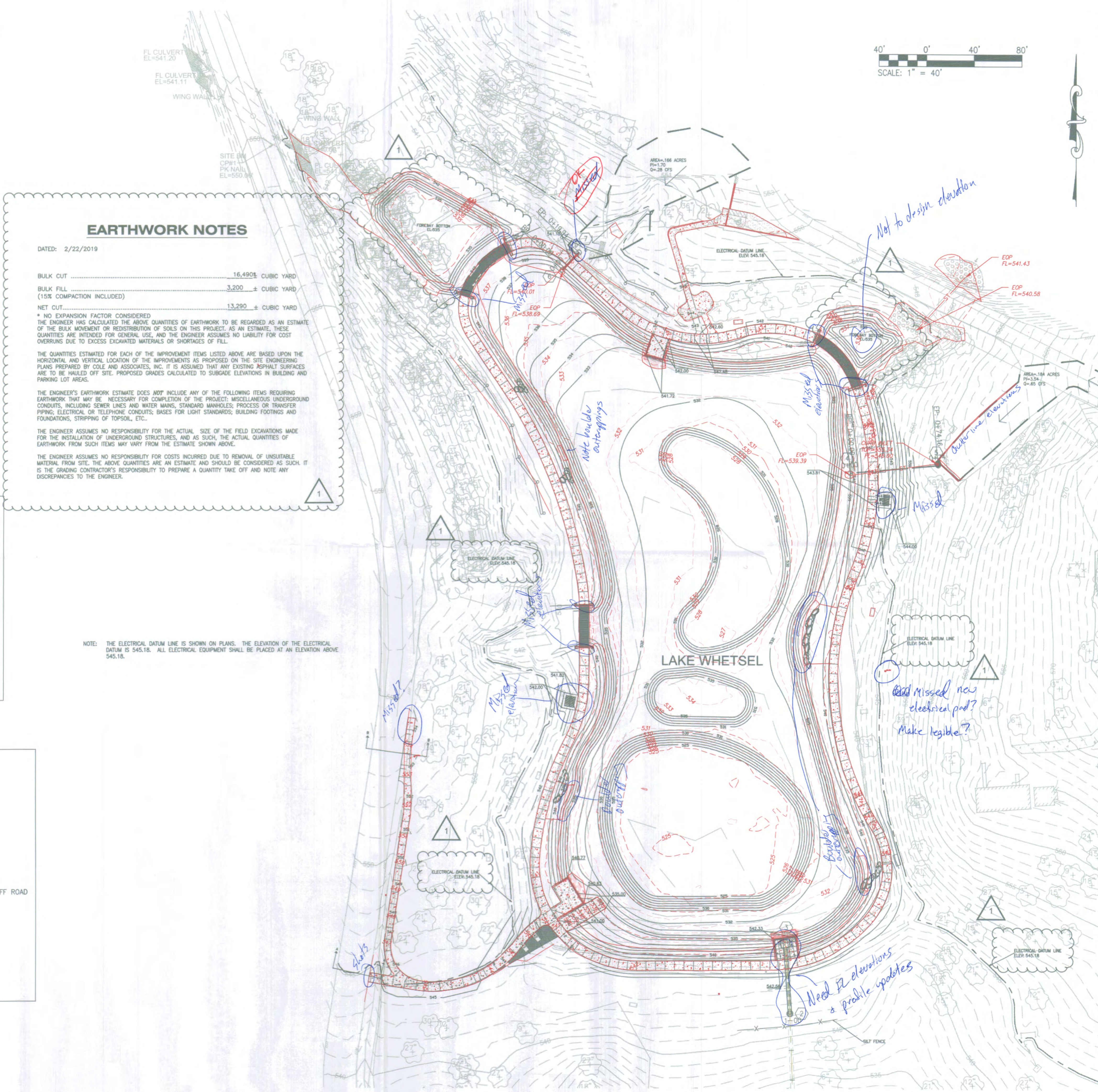
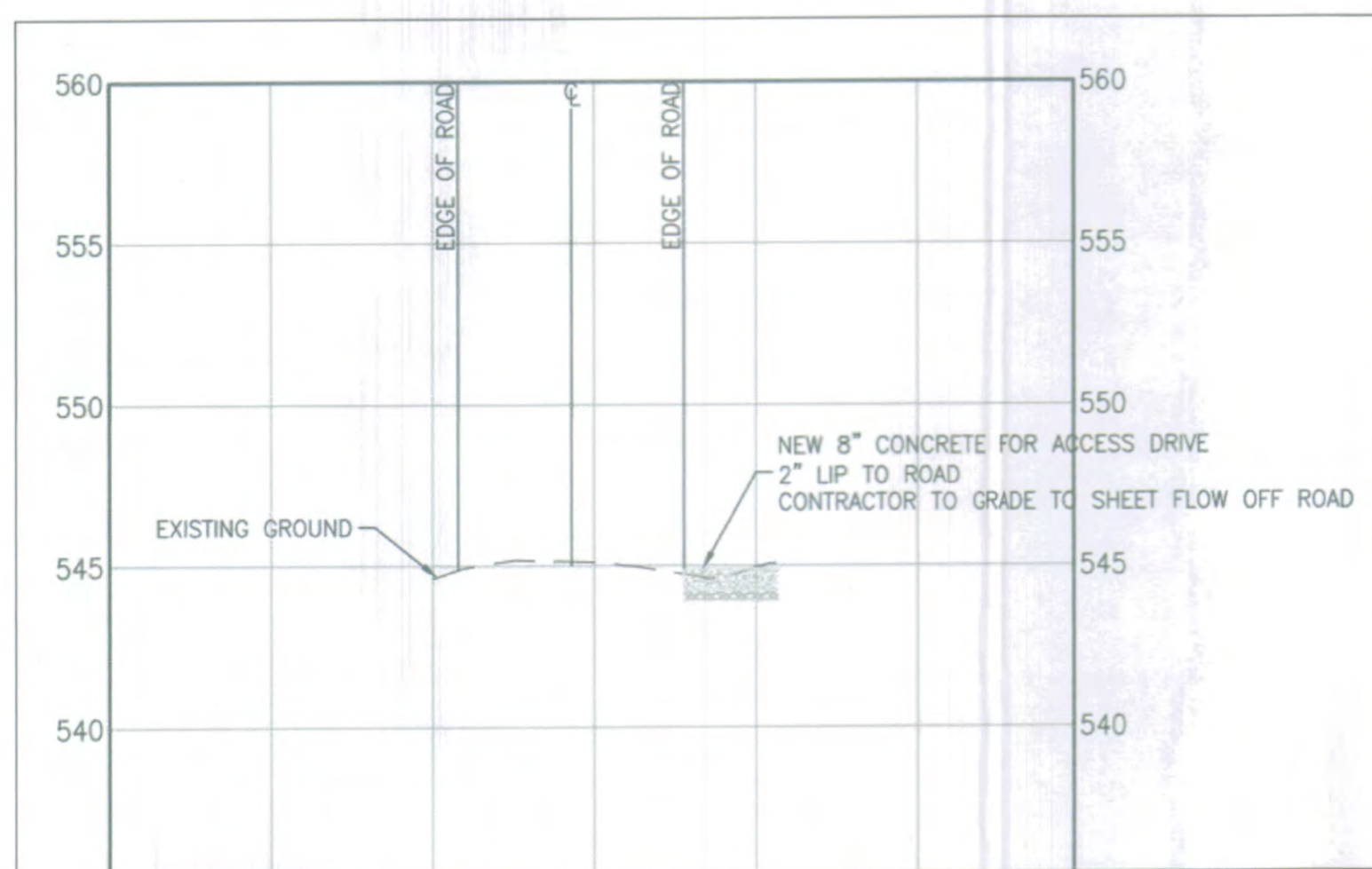
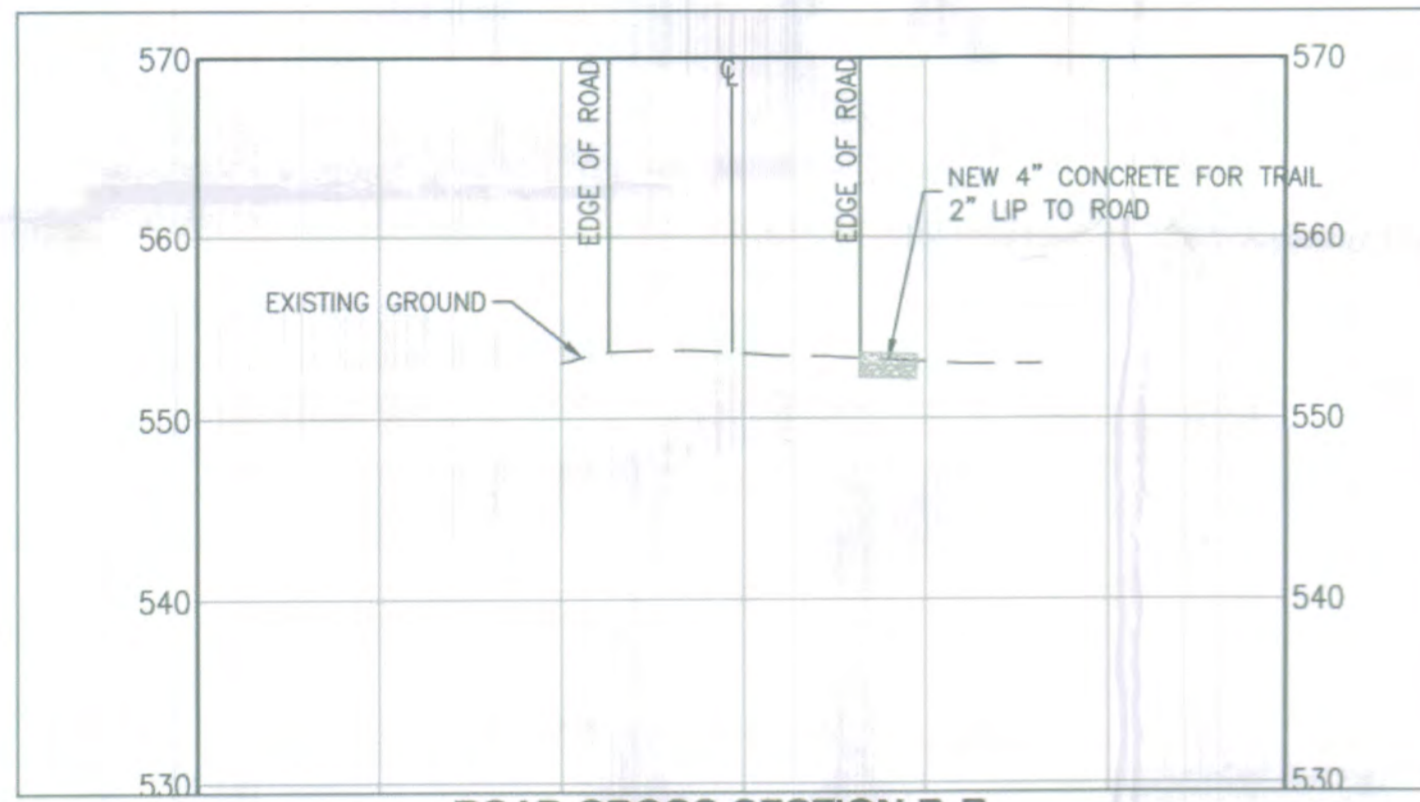
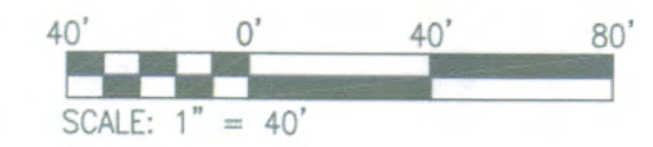
THE QUANTITIES ESTIMATED FOR EACH OF THE IMPROVEMENT ITEMS LISTED ABOVE ARE BASED UPON THE HORIZONTAL AND VERTICAL LOCATION OF THE IMPROVEMENTS AS PROPOSED ON THE SITE ENGINEERING PLANS PREPARED BY COLE AND ASSOCIATES, INC. IT IS ASSUMED THAT ANY EXISTING ASPHALT SURFACES ARE TO BE HAULED OFF SITE. PROPOSED GRADES CALCULATED TO SUBGRADE ELEVATIONS IN BUILDING AND PARKING LOT AREAS.

THE ENGINEER'S EARTHWORK ESTIMATE DOES NOT INCLUDE ANY OF THE FOLLOWING ITEMS REQUIRING EARTHWORK THAT MAY BE NECESSARY FOR COMPLETION OF THE PROJECT: MISCELLANEOUS UNDERGROUND CONDUITS, INCLUDING SEWER LINES AND WATER MAINS, STANDARD MANHOLES, PROCESS OR TRANSFER PIPING, ELECTRICAL OR TELEPHONE CONDUITS, BASES FOR LIGHT STANDARDS, BUILDING FOOTINGS AND FOUNDATIONS, STRIPPING OF TOPSOIL, ETC.

THE ENGINEER ASSUMES NO RESPONSIBILITY FOR THE ACTUAL SIZE OF THE FIELD EXCAVATIONS MADE FOR THE INSTALLATION OF UNDERGROUND STRUCTURES, AND AS SUCH, THE ACTUAL QUANTITIES OF EARTHWORK FROM SUCH ITEMS MAY VARY FROM THE ESTIMATE SHOWN ABOVE.

THE ENGINEER ASSUMES NO RESPONSIBILITY FOR COSTS INCURRED DUE TO REMOVAL OF UNSUITABLE MATERIAL FROM SITE. THE ABOVE QUANTITIES ARE AN ESTIMATE AND SHOULD BE CONSIDERED AS SUCH. IT IS THE GRADING CONTRACTOR'S RESPONSIBILITY TO PREPARE A QUANTITY TAKE OFF AND NOTE ANY DISCREPANCIES TO THE ENGINEER.

NOTE: THE ELECTRICAL DATUM LINE IS SHOWN ON PLANS. THE ELEVATION OF THE ELECTRICAL DATUM IS 545.18. ALL ELECTRICAL EQUIPMENT SHALL BE PLACED AT AN ELEVATION ABOVE 545.18.



100 North Main Street
O'Fallon, MO 63366

Project:
**FORT ZUMWALT P
Lake Whetsel Desig
Construction**

Landscape Architect:
SWT DESI

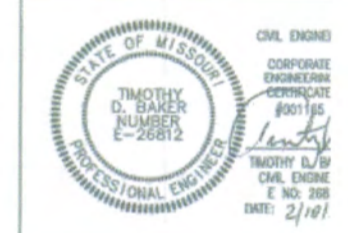
7722 Big Bend Blvd.
St. Louis, MO 63119
t. 314.644.5700

Civil Engineering:
COLE
Tim Baker, P.E.
1520 S. Fifth Street, Suite 307
St. Charles, MO 63033
636.978.7508

+ ST. CHARLES
1520 S. FIFTH STREET
SUITE 307
ST. CHARLES, MO 63033
636.978.7508

cole
CIVIL ENGINEERING / SURVEYING / PLANNING / LANDSCAPE ARCHITECTURE

Tim Baker - Civil Engineer
MO # PE-E-26812



Cole and Associates
Missouri State Certificate
Authority #184.00244

KEY PLAN

Issuances

No.	Description
01	DD Review Set
02	CD Review Set
03	CD Review Set
04	Bid Documents

Revisions

No.	Description
01	Addendum #1

SWT No. 20708.01

Drawn TB

Sheet Title
GRADING AND SWPP

Number
C30