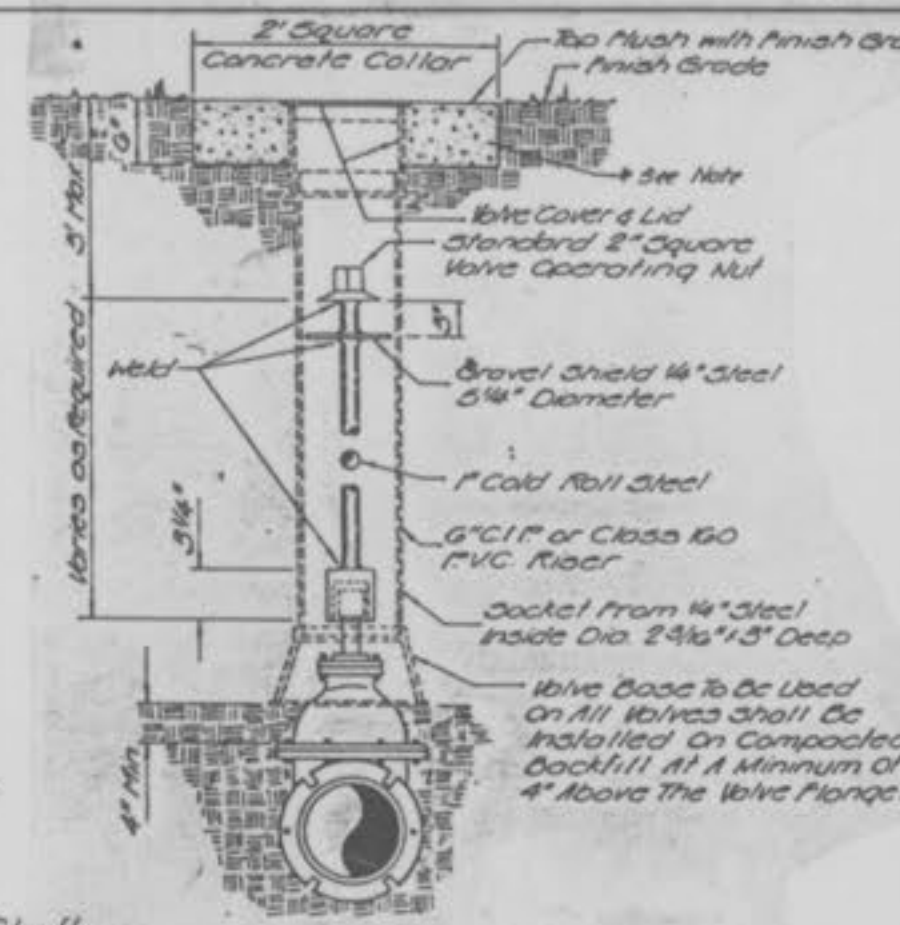
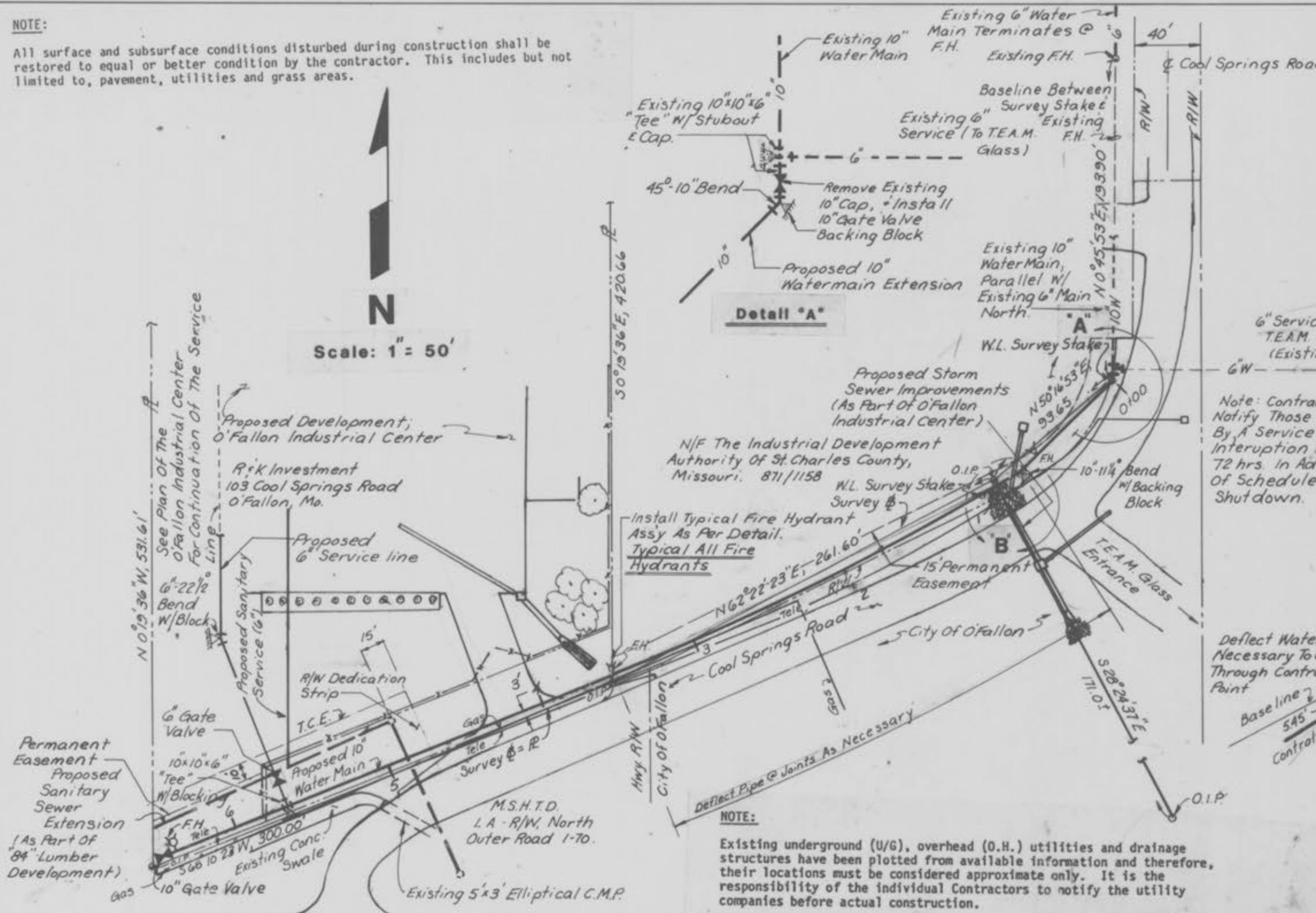


NOTE:
All surface and subsurface conditions disturbed during construction shall be restored to equal or better condition by the contractor. This includes but not limited to, pavement, utilities and grass areas.

Scale: 1" = 50'



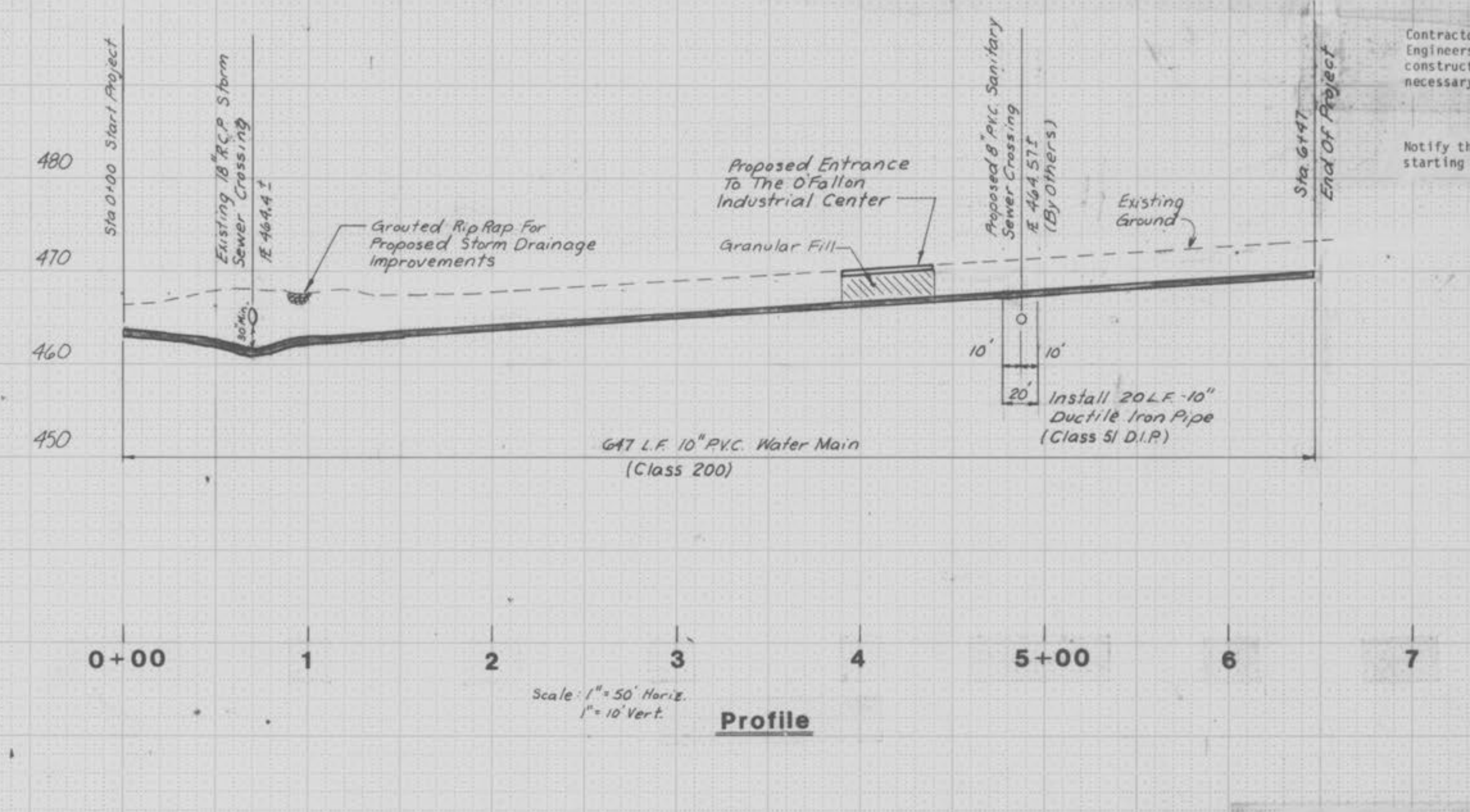
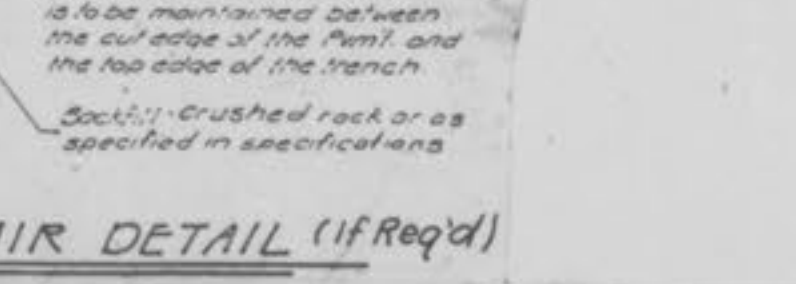
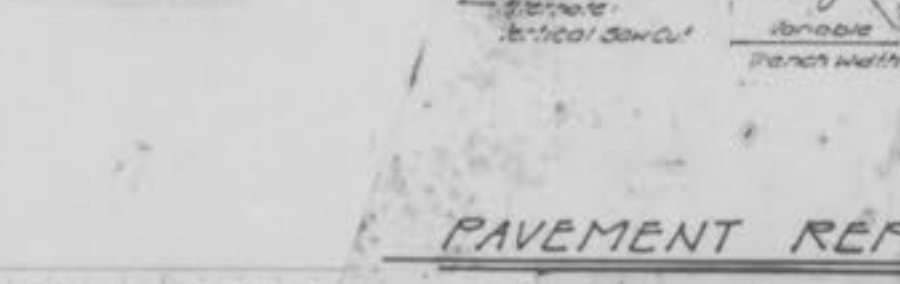
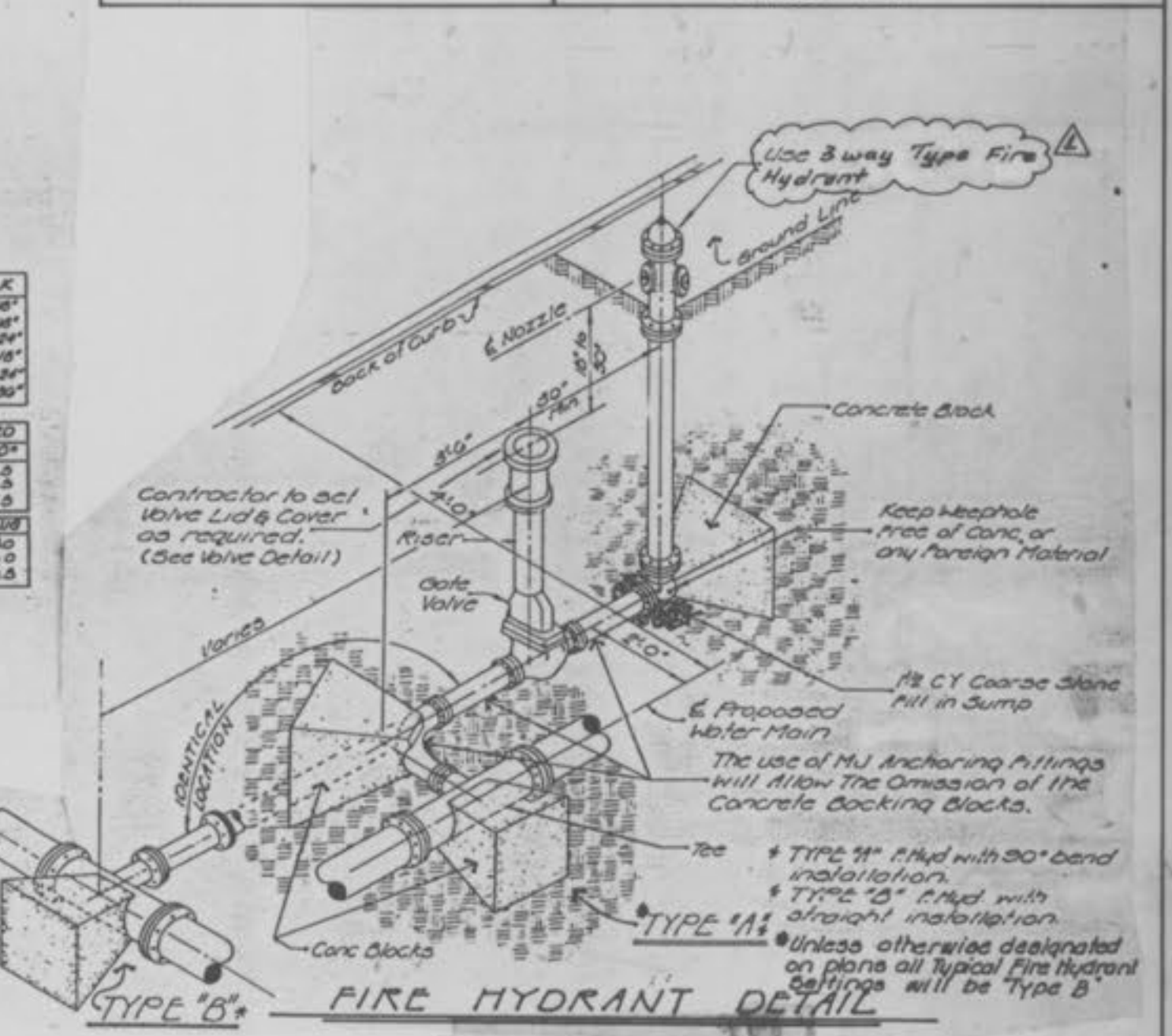
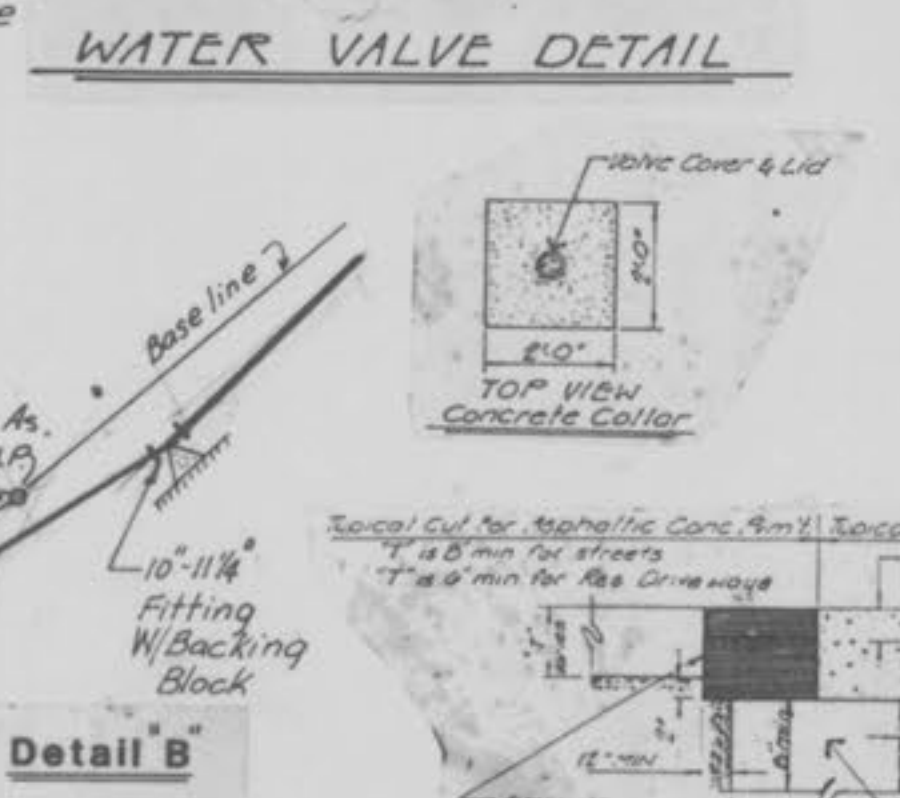
BACKING BLOCKS

Note: For 1" fittings use Backing Blocks As Applicable For 1/2" fittings.

SIZE	B	C	D	E	F
1/2"	1/2"	1/2"	1/2"	1/2"	1/2"
3/4"	3/4"	3/4"	3/4"	3/4"	3/4"
1"	1"	1"	1"	1"	1"
1 1/4"	1 1/4"	1 1/4"	1 1/4"	1 1/4"	1 1/4"
1 1/2"	1 1/2"	1 1/2"	1 1/2"	1 1/2"	1 1/2"
1 3/4"	1 3/4"	1 3/4"	1 3/4"	1 3/4"	1 3/4"
2"	2"	2"	2"	2"	2"
2 1/2"	2 1/2"	2 1/2"	2 1/2"	2 1/2"	2 1/2"
3"	3"	3"	3"	3"	3"
3 1/2"	3 1/2"	3 1/2"	3 1/2"	3 1/2"	3 1/2"
4"	4"	4"	4"	4"	4"
4 1/2"	4 1/2"	4 1/2"	4 1/2"	4 1/2"	4 1/2"
5"	5"	5"	5"	5"	5"
5 1/2"	5 1/2"	5 1/2"	5 1/2"	5 1/2"	5 1/2"
6"	6"	6"	6"	6"	6"
6 1/2"	6 1/2"	6 1/2"	6 1/2"	6 1/2"	6 1/2"
7"	7"	7"	7"	7"	7"
7 1/2"	7 1/2"	7 1/2"	7 1/2"	7 1/2"	7 1/2"
8"	8"	8"	8"	8"	8"
8 1/2"	8 1/2"	8 1/2"	8 1/2"	8 1/2"	8 1/2"
9"	9"	9"	9"	9"	9"
9 1/2"	9 1/2"	9 1/2"	9 1/2"	9 1/2"	9 1/2"
10"	10"	10"	10"	10"	10"

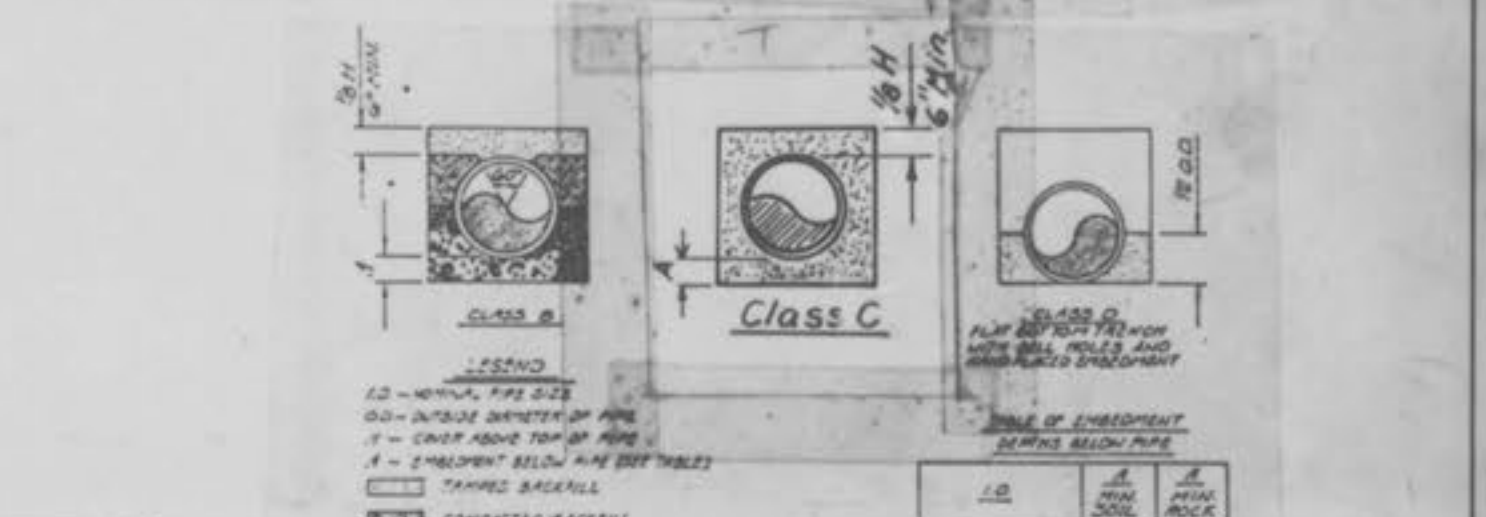
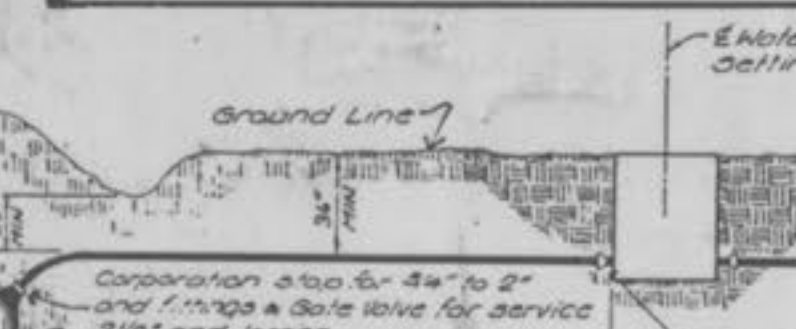
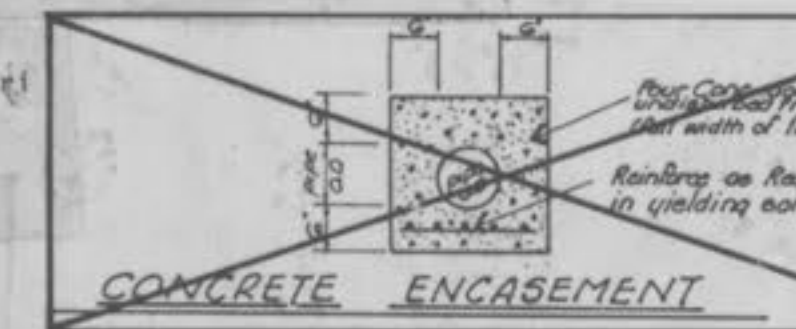
GBA
GEORGE BUTLER ASSOCIATES, INC.
Engineers / Architects / Landscape Architects / Planners

PROJECT	Cool Springs Road Water Main Ext	SHEET NO.	1	TOTAL SHEETS	1
PROJECT NO.	87-5128	DATE:	1/1988		
REVISIONS:	3-11-88				



Contractor is to contact the water system operating authority, Mid Missouri Engineers, (M.M.E.), a minimum of 24 hours in advance of starting construction, for line location and valve operation. All valve closings necessary will be done by M.M.E. personnel only.

Notify the City of O'Fallon building department 48 hours in advance of starting construction.



CONCRETE ENCASEMENT
This concrete encasement shall be placed in 6" lifts and compacted by vibrator.

TYPICAL SERVICE ASSEMBLY
See Construction Plans For The O'Fallon Industrial Center For Detail Of Meter Pit.

WATER MAIN EMBEDMENT
Embedment shall be Class C unless otherwise noted on plans.

Scale: 1" = 50' Horiz.
1" = 10' Vert.

Profile



As Constructed 10-11-88 S.A.S.

GBA
GEORGE BUTLER ASSOCIATES, INC.
Engineers / Architects / Landscape Architects / Planners
Suite 200 / 225 S. Main St. / O'Fallon, Missouri 63306

Cool Springs Road Water Main Extension
For
GJH Contracting Co.
O'Fallon, Missouri

Location Map
N.T.S.

DESIGNED BY: MJH DRAWN BY: MJH CHECKED BY: FLK

JOB NO. 87-5128
DATE: JAN 1988
SCALE: As Noted
SHEET NO. 1 OF 1

Surveying By:
LANDMARK SURVEYING, INC.
802 E. MAIN
Wentzville, Missouri 63385