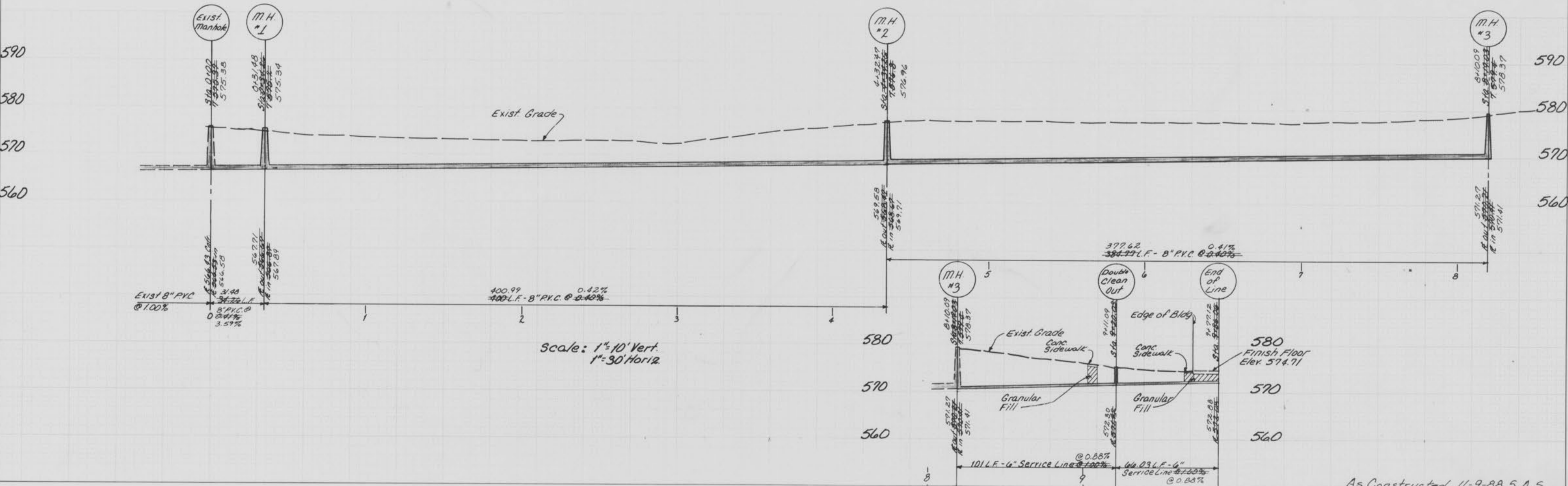
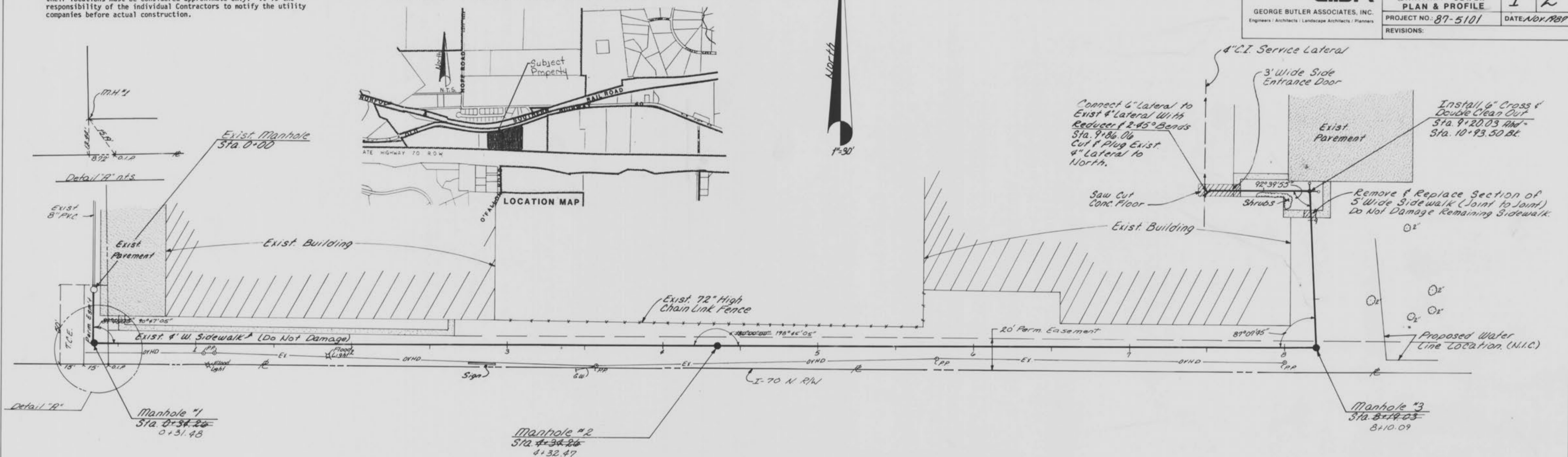


**NOTE:**  
Existing underground (U/G), overhead (O.H.) utilities and drainage structures have been plotted from available information and therefore, their locations must be considered approximate only. It is the responsibility of the individual Contractors to notify the utility companies before actual construction.

**NOTE:**  
All surface and subsurface conditions disturbed during construction shall be restored to equal or better condition by the contractor. This includes but not limited to, pavement, utilities and grass areas.

*Note: Prior to Construction of Sewer Line, Contractor Shall Locate 4" Lateral Under Building Floor & Verify Depth.*

<b>GBA</b> GEORGE BUTLER ASSOCIATES, INC. <small>Engineers / Architects / Landscape Architects / Planners</small>	PROJECT	SHEET NO.	TOTAL SHEETS
	G.W. FIBERGLASS SANITARY SEWER PLAN & PROFILE	1	2
	PROJECT NO: 87-5101	DATE: NOV. 1987	
REVISIONS:			



As Constructed 11-9-88 S.A.S.