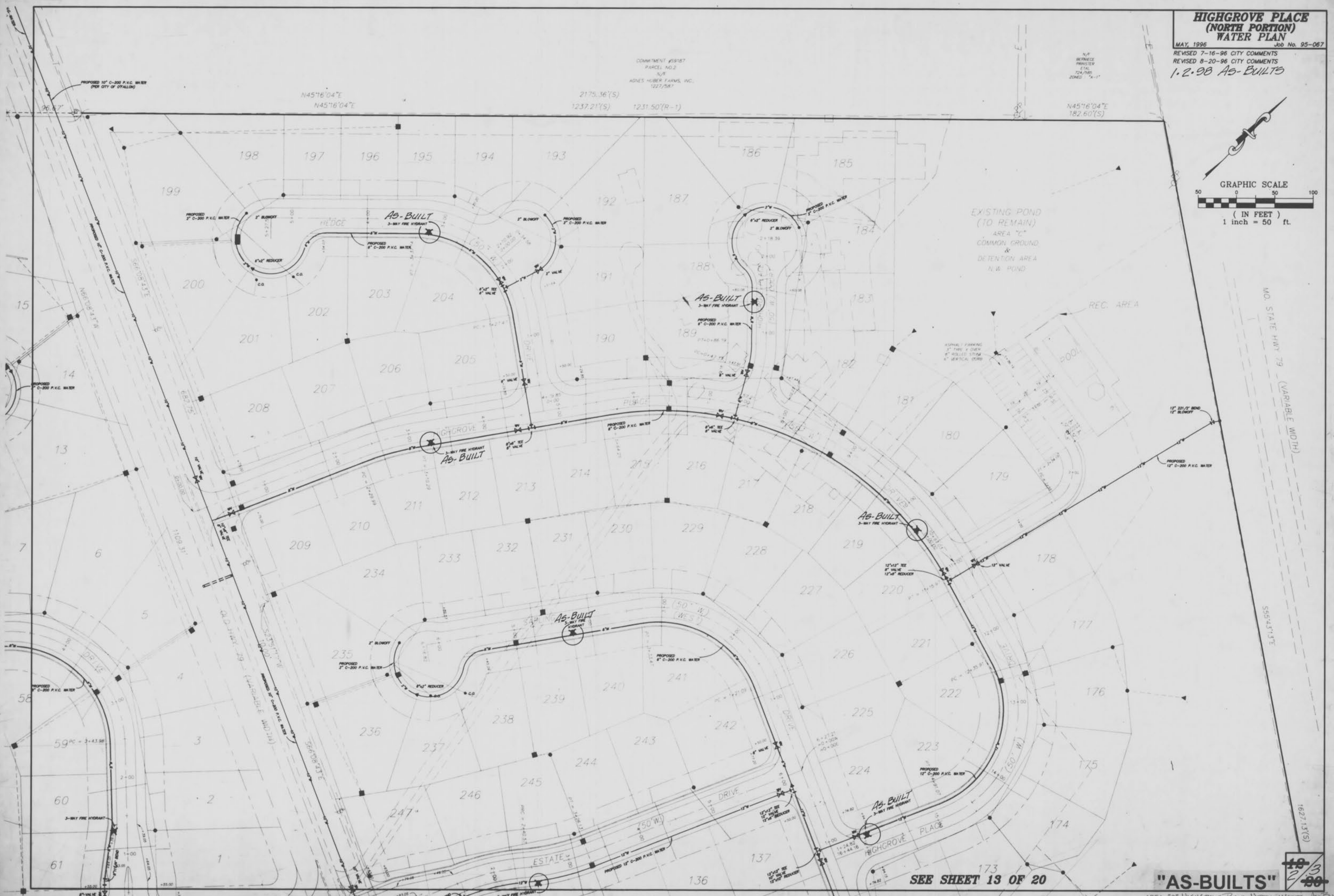
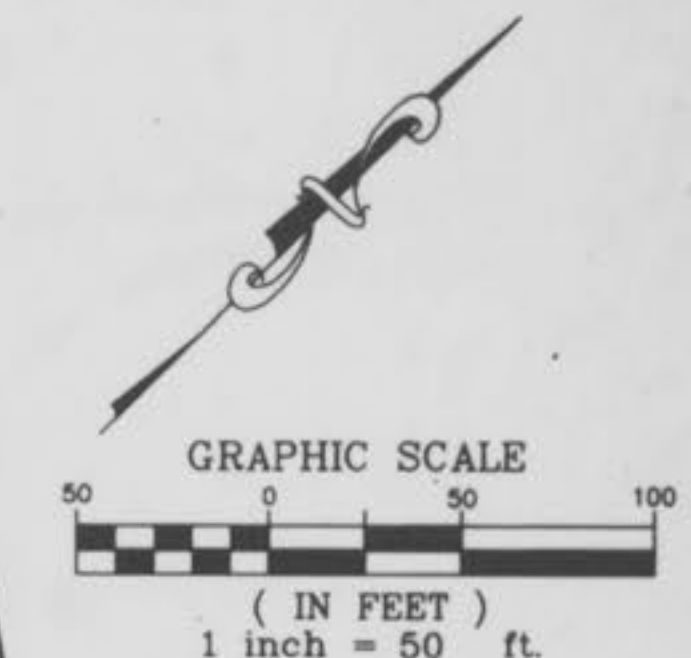


**HIGHGROVE PLACE
(NORTH PORTION)
WATER PLAN**

MAY, 1996 Job No. 95-067
 REVISED 7-16-96 CITY COMMENTS
 REVISED 8-20-96 CITY COMMENTS
1.2.98 AS-BUILTS

COMMITMENT #59187
 PARCEL NO. 2
 N/A
 ADRES HUBER FARMS, INC.
 1227/25R7

N/A
 BURNACE
 PRINSTER
 ETAL
 2/4/95
 ZONED "A-1"



SEE SHEET 13 OF 20

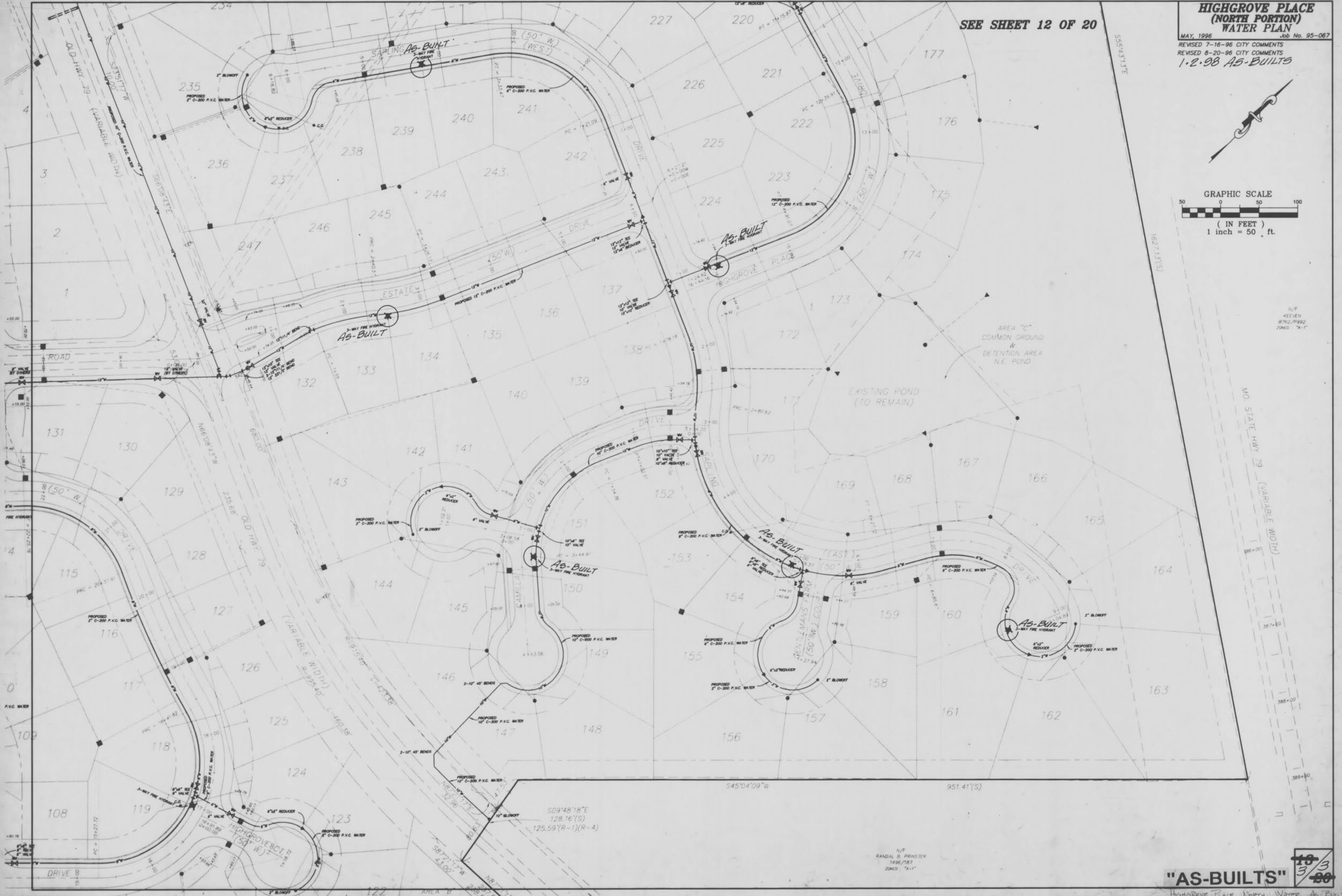
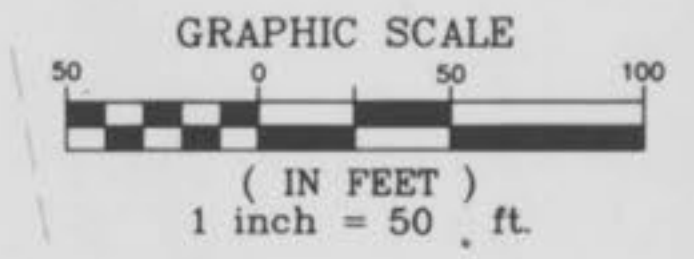
"AS-BUILTS"
 AREA "C" HIGHGROVE PLACE NORTH WATER AS-BUILTS

10/3/98

**HIGHGROVE PLACE
(NORTH PORTION)
WATER PLAN**

MAY, 1996 Job No. 95-067
REVISED 7-16-96 CITY COMMENTS
REVISED 8-20-96 CITY COMMENTS
1-2-98 AS-BUILTS

SEE SHEET 12 OF 20



N/T
RANDAL B. PRINSTER
1496/187
ZONED "A-1"

"AS-BUILTS"

10/3/98

HIGHGROVE PLACE NORTH WATER AS-BUILTS