









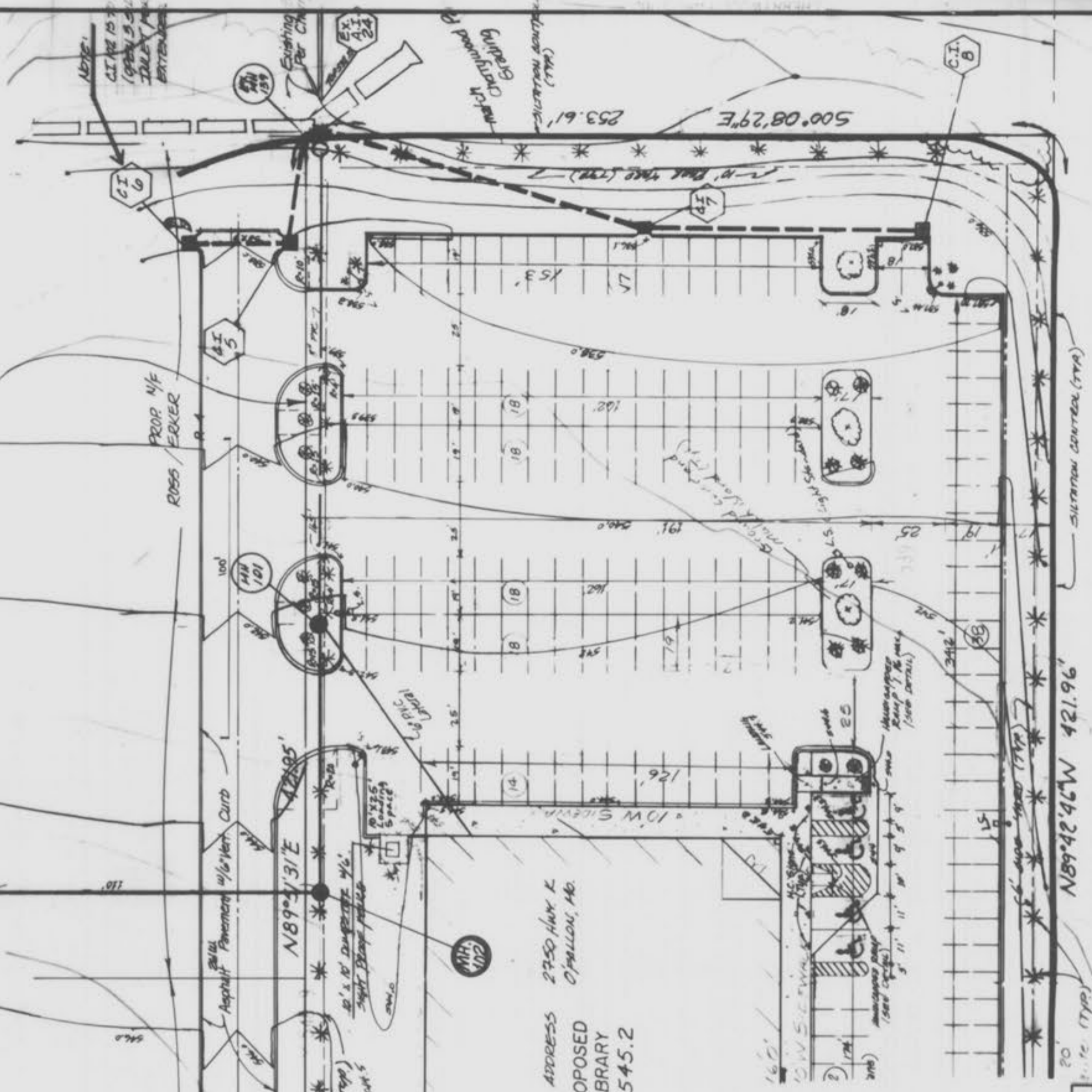
**SITE PLAN FOR**

**ST. CHARLES CITY-COUNTY LIBRARY DISTRICT**

A TRACT OF LAND BEING PART OF SECTION 4,  
TOWNSHIP 46 N., RANGE 3 E.  
CITY OF O'FALLON ST. CHARLES CO., MO.

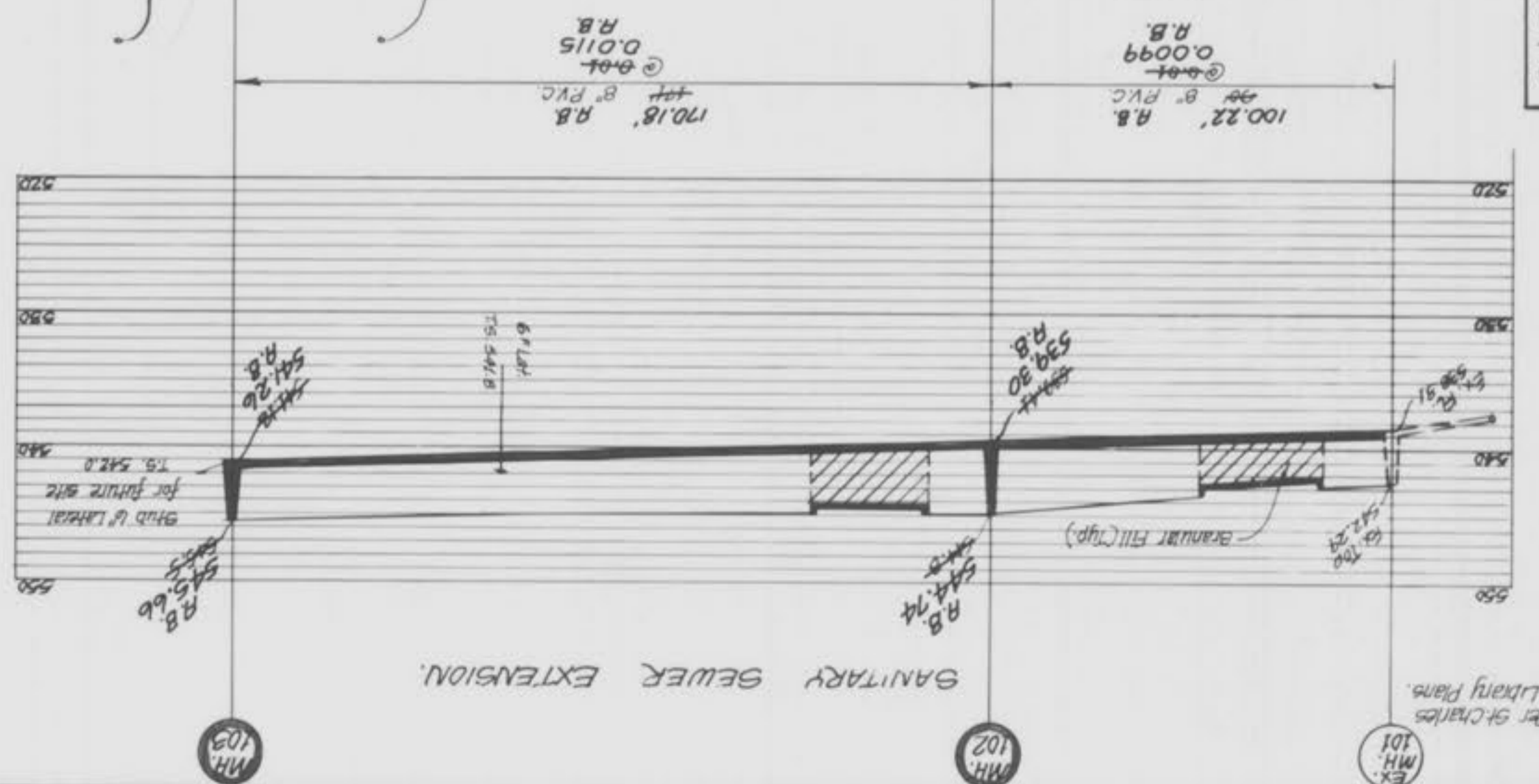
Property, (A Missouri Partnership)

Prop. 1/4 of Ross/Erker and "K"



Underground facilities, structures and utilities have been plotted from available surveys and records; and, therefore, their locations must be considered approximate only. It is possible there may be others, the existence of which is presently not known. It is the contractor's responsibility to determine their existence and exact location and to avoid damage thereto.

Note: Manholes shall be 42" Dia. concrete, manholes, laterals, bedding, gran. fill all construction and materials shall be per Duckett Creek Sanitary District Standards and Specifications.



ENGINEERS AUTHENTICATION  
The responsibility for professional engineering liability on this project is hereby limited to the use of plans authorized by the seal, signature and date hereunder attached. Responsibility is not assumed for any other engineering plans involved in the project and specifically excludes revisions after their date of authorization.  
N. Charles Engineering and Surveying

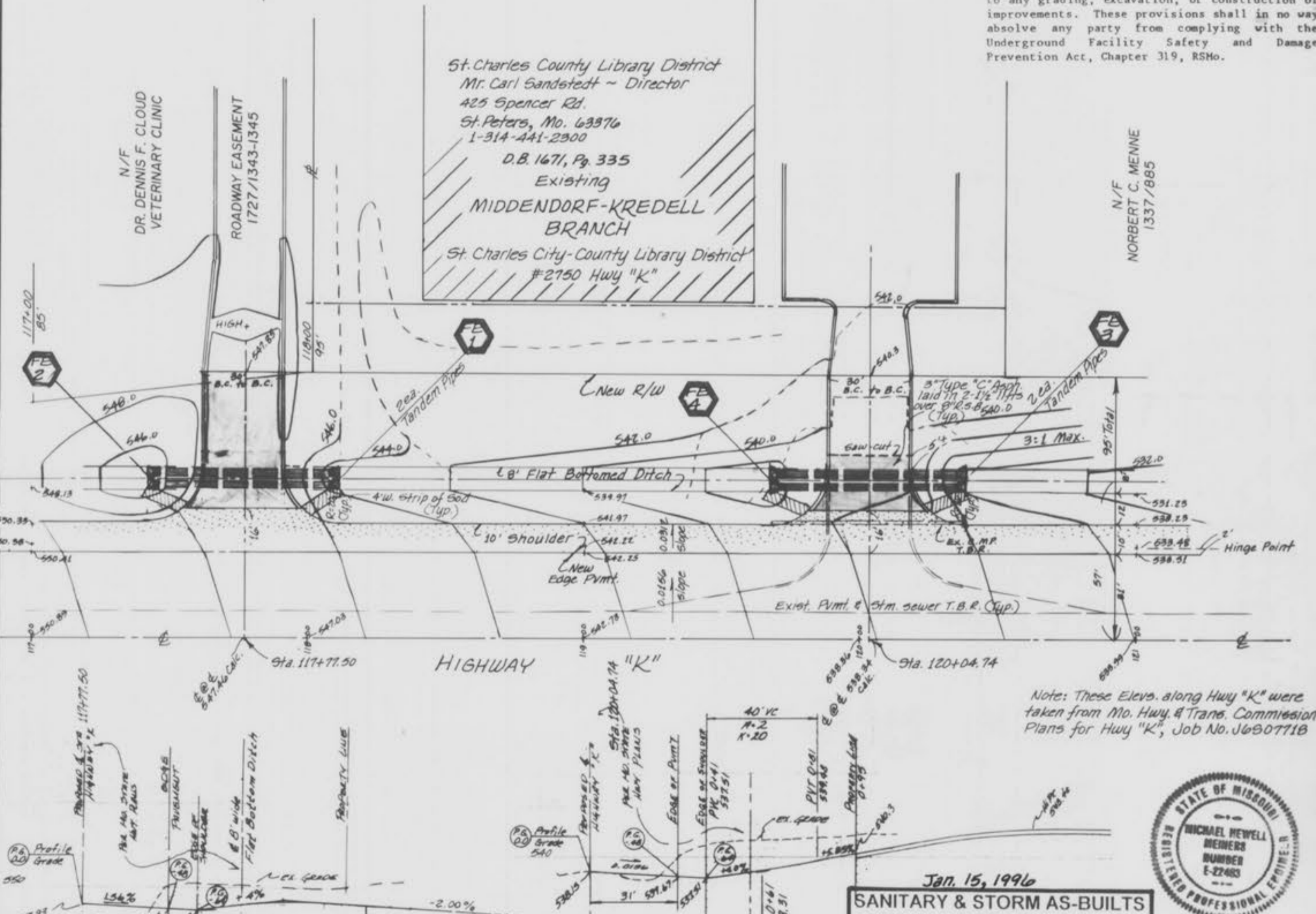
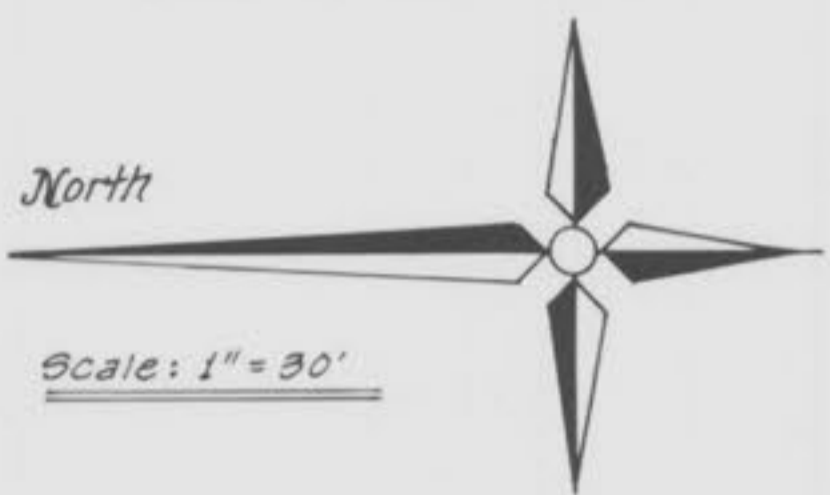
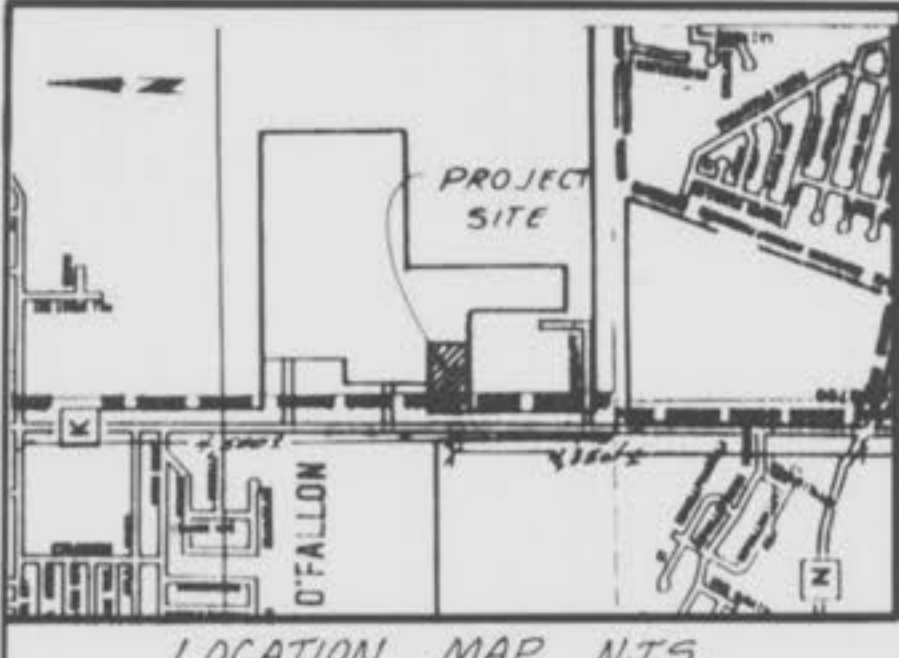
**SANITARY & STORM AS-BUILTS**  
(AS SHOWN ON PROFILES)

ST. CHARLES ENGINEERING & SURVEYING  
801 South Fifth St., Suite 202  
St. Charles, Missouri 63301  
Off. 947-0607, Fax 947-2448

ORDER NO. 94-207  
DATE 5/9/95

PROPERTY N/F  
NORBERT C. MENNE

**STATE HIGHWAY ENTRANCE PLANS FOR  
MIDDENDORF-KREDELL BRANCH**  
ST. CHARLES CITY-COUNTY LIBRARY DISTRICT  
A TRACT OF LAND BEING PART OF SECTION 4,  
TOWNSHIP 46 NORTH, RANGE 3 EAST  
CITY OF O'FALLON ST. CHARLES CO., MO.



The underground utilities shown herein were plotted from available information and do not necessarily reflect the actual existence, nonexistence, size, type, number, or location of these or other utilities. The general contractor shall be responsible for verifying the actual location of all underground utilities, shown or not shown, and said utilities shall be located in the field prior to any grading, excavation, or construction of improvements. These provisions shall in no way absolve any party from complying with the Underground Facility Safety and Damage Prevention Act, Chapter 319, RSMo.

St. Charles County Library District  
Mr. Carl Sandstedt - Director  
425 Spencer Rd.  
St. Peters, Mo. 63976  
1-314-441-2900  
D.B. 1671, Pg. 335  
Existing  
MIDDENDORF-KREDELL  
BRANCH  
St. Charles City-County Library District  
#2750 Hwy "K"

PROPERTY N/F  
NORBERT C. MENNE  
1337/1865

Note: These Elev. along Hwy "K" were taken from Mo. Hwy. & Trans. Commission Plans for Hwy "K", Job No. J680771B

Jan. 15, 1996  
**SANITARY & STORM AS-BUILTS**  
(AS SHOWN ON PROFILES)



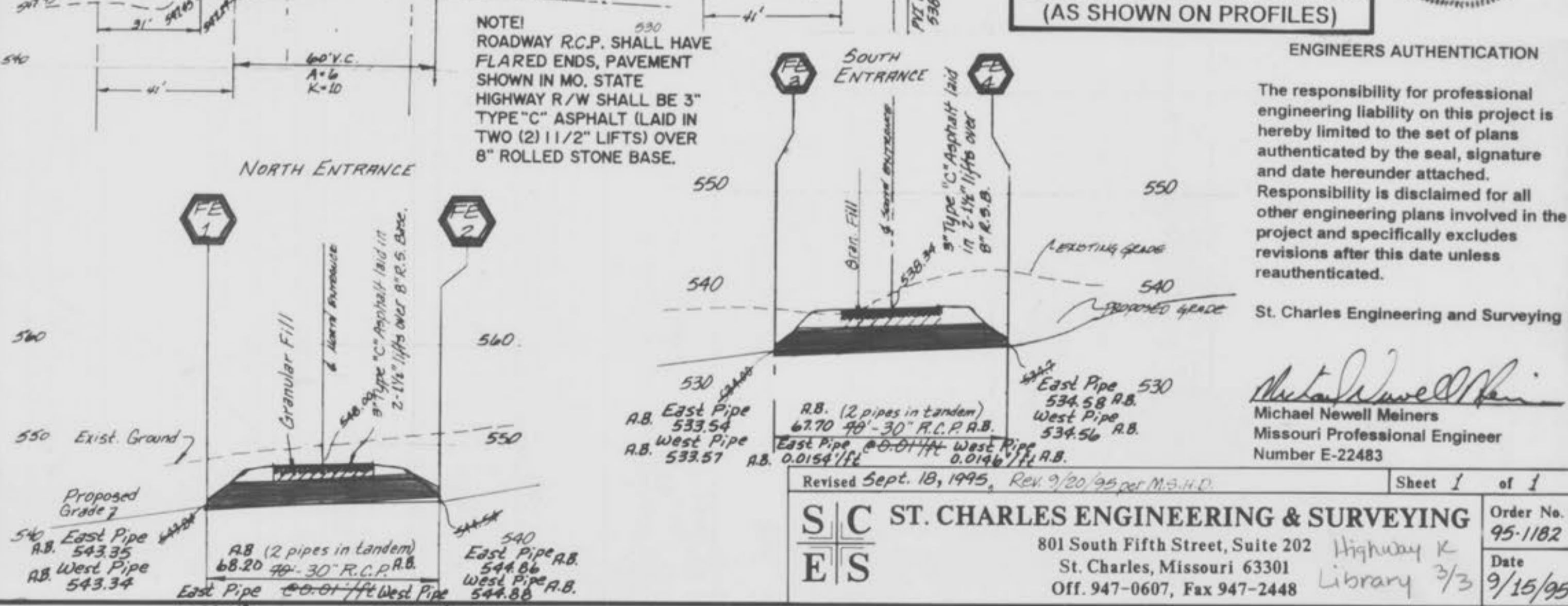
ENGINEERS AUTHENTICATION

The responsibility for professional engineering liability on this project is hereby limited to the set of plans authenticated by the seal, signature and date hereunder attached. Responsibility is disclaimed for all other engineering plans involved in the project and specifically excludes revisions after this date unless reauthenticated.

St. Charles Engineering and Surveying

Michael Newell Meiners  
Missouri Professional Engineer  
Number E-22483

NOTE!  
ROADWAY R.C.P. SHALL HAVE FLARED ENDS, PAVEMENT SHOWN IN MO. STATE HIGHWAY R/W SHALL BE 3" TYPE "C" ASPHALT (LAID IN TWO (2) 1 1/2" LIFTS) OVER 8" ROLLED STONE BASE.



ST. CHARLES ENGINEERING & SURVEYING  
801 South Fifth Street, Suite 202 Highway K  
St. Charles, Missouri 63301 Library 3/3  
Off. 947-0607, Fax 947-2448  
Date 9/15/95

Order No. 95-1182  
Date 9/15/95