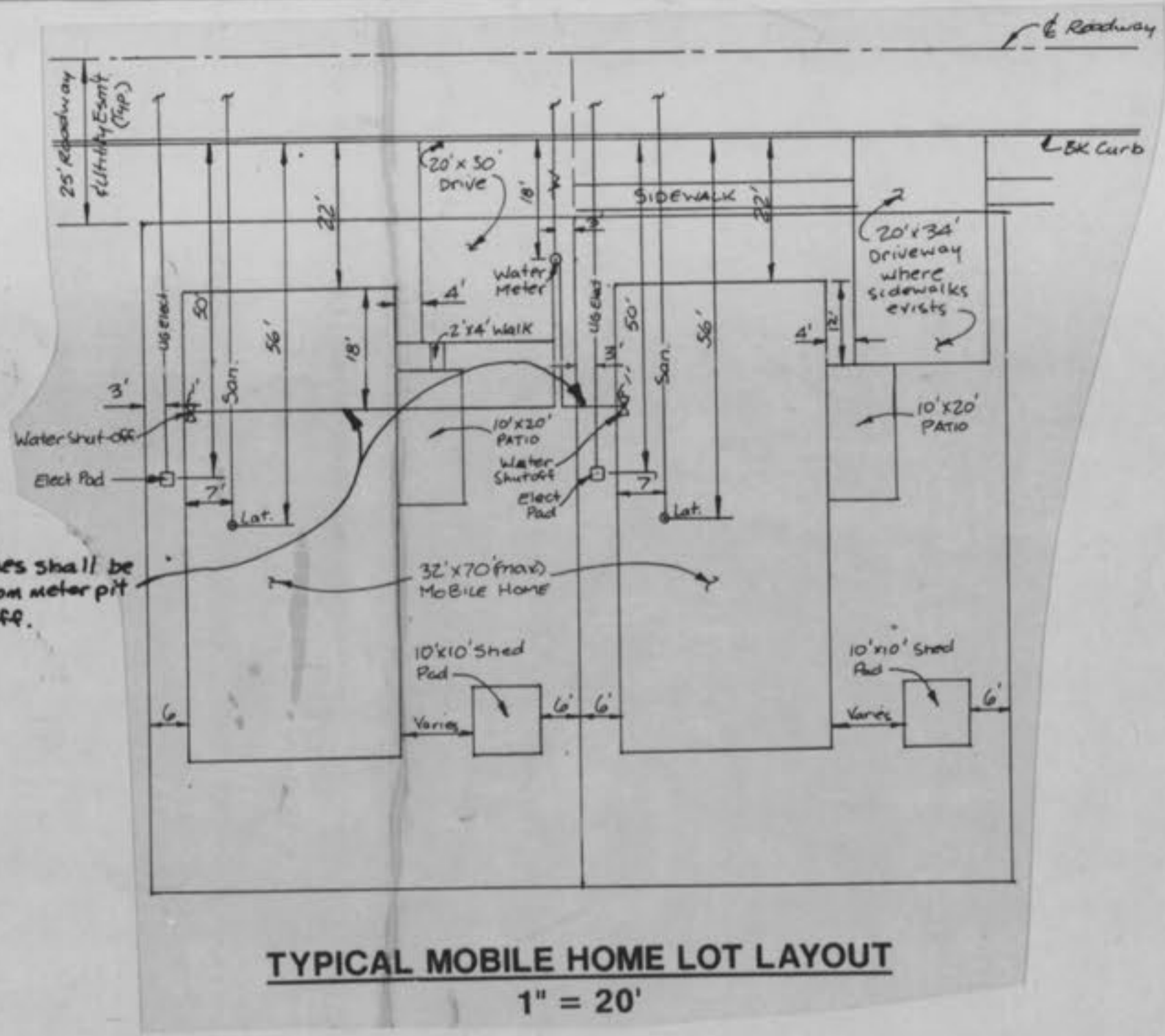
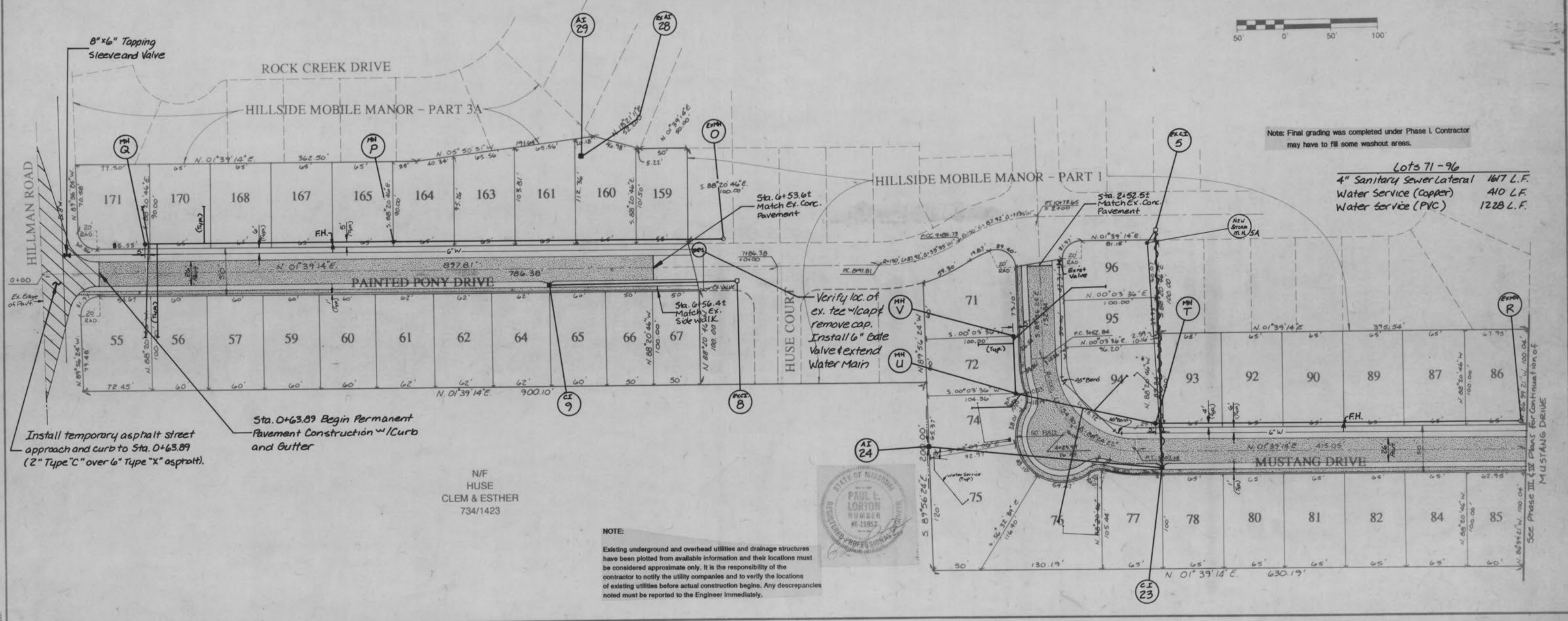
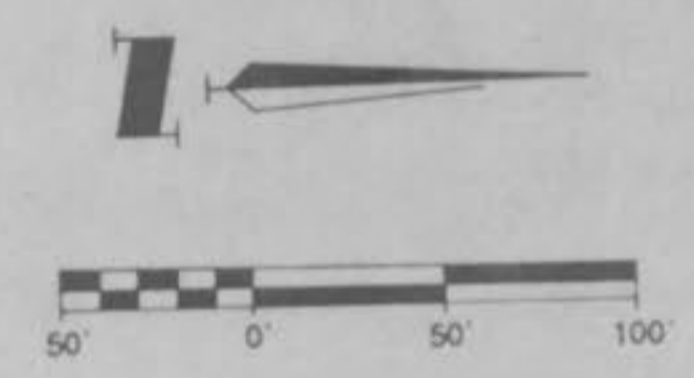


GBA GEORGE BUTLER ASSOCIATES, INC. Engineers / Architects / Landscape Architects / Planners Kansas City, Mo. / Lenexa, Mo. / Olathe, Mo. / Ames, Ia. / Oklahoma City, Ok.		DATE: SEPT. 1991
DESIGN BY: JG / PL		
DRAWN BY: JG		
PROJECT NO: 6583		
SHEET NO: 3		TOTAL SHEETS: 8
FLAT PLAN		
REVISIONS		
Rev. Typ. Mobile Home Lot Layout & Laterals	JG	9-8-92
Added Water Service Lines & Sewer Laterals	"	"
As-Built Mustang Drive	CTG	9-4-96



Lots 55-67 and 159-171
 4" Sanitary Sewer Lateral 1481 L.F.
 Water Service (Copper) 366 L.F.
 Water Service (PVC) 1089 L.F.



Hillside Mobile Home Park
 AS-BUILTS 1/4

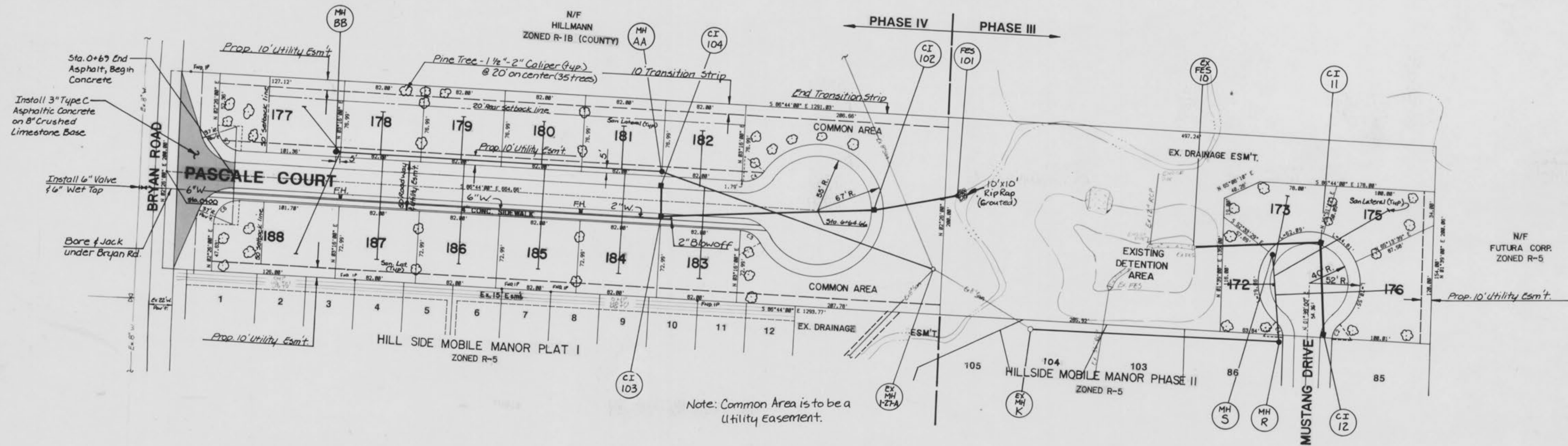
CURVE	DELTA ANGLE	RADIUS	ARC LENGTH	CHORD	TANGENT
C1	51°19'04"	20.00	17.91	17.32	9.61
C2	51°19'04"	20.00	17.91	17.32	9.61
C3	57°04'45"	25.00	24.91	23.09	13.08
C4	57°04'45"	25.00	24.91	23.09	13.08
C5	89°10'00"	25.00	38.91	35.18	24.64
C6	90°50'00"	25.00	39.63	35.61	25.37

GBA
 GEORGE BUTLER ASSOCIATES, INC.
 Engineers / Architects / Landscape Architects / Planners
 Kansas City, Mo. / Lenexa, Mo. / O'Fallon, Mo. / Ames, Ia. / Oklahoma City, Ok.

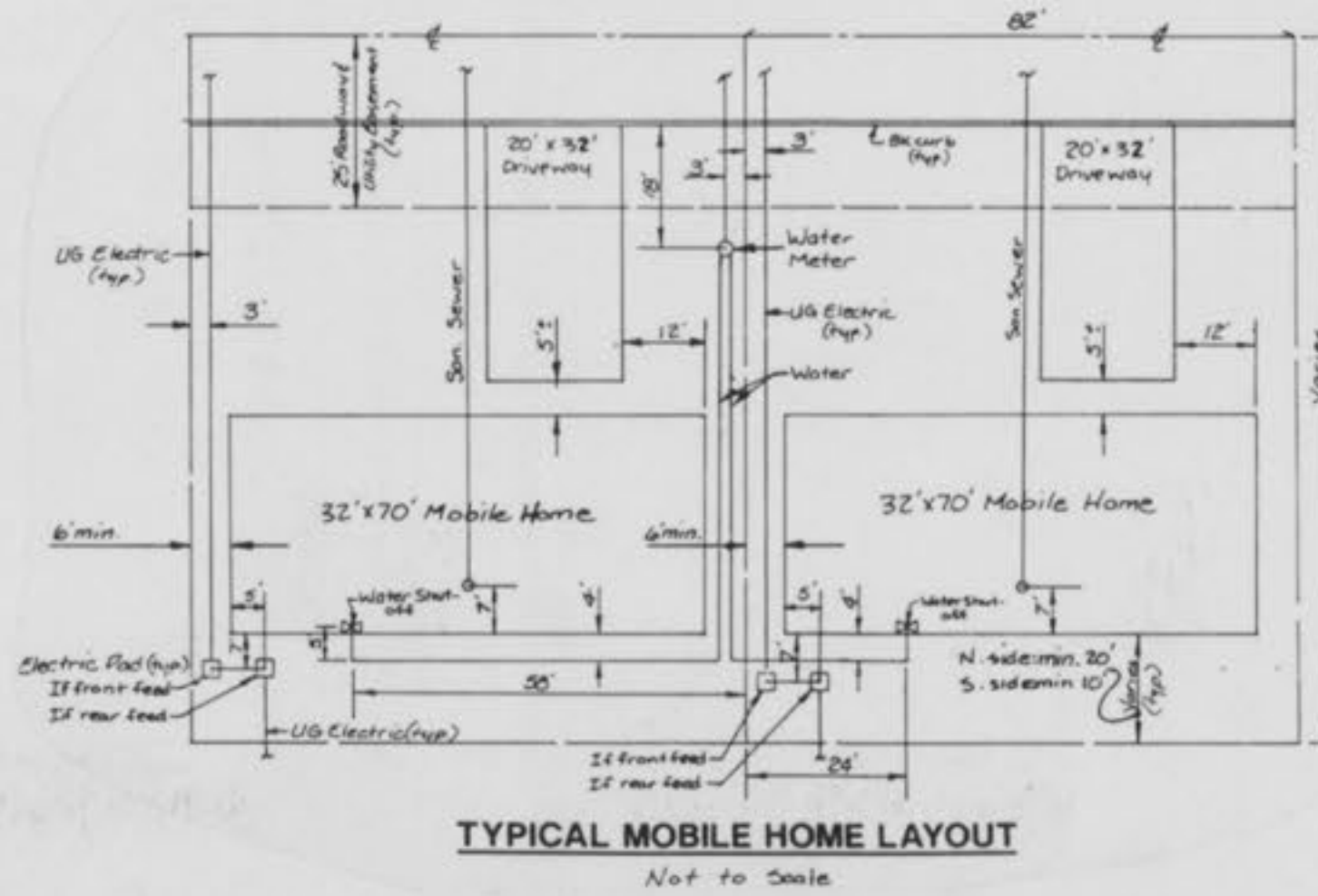
DATE: AUGUST, 1992
 DESIGN BY: PL
 DRAWN BY: JG
 PROJECT NO: 6603.02
 SHEET NO: 2
 TOTAL SHEETS: 9

FLAT PLAN & LANDSCAPING PLAN

REVISIONS
 12-BRYAN MUSTANG DR.
 BY: JG
 DATE: 9-6-96



Note: Common Area is to be a Utility Easement.



LANDSCAPING REQUIREMENTS (PHASE IV)

Bryan Rd. Frontage	- 200' - 50'/tree = 4 trees
Proposed street Frontage	- 1255' - 50'/tree = 25 trees
One tree per 2 mobile homes (16 homes)	= 8 trees
TOTAL*	= 37 TREES

*Not including transition strip.

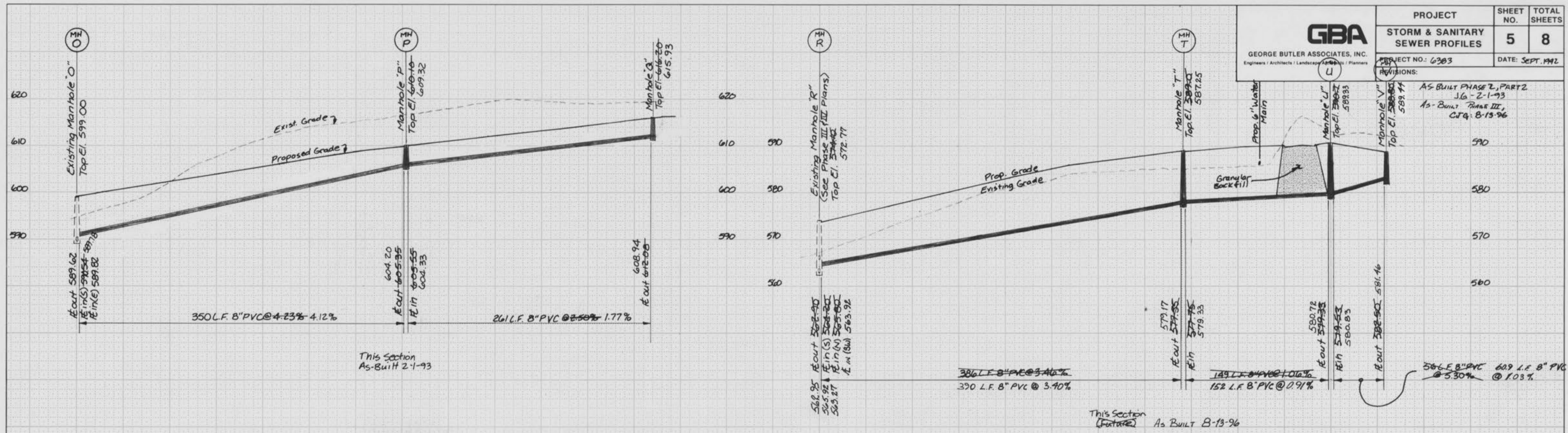
Note: Existing underground and overhead utilities and drainage structures have been plotted from available information and their locations must be considered approximate only. It is the responsibility of the contractor to notify the utility companies and to verify the locations of existing utilities before actual construction begins. Any discrepancies noted must be reported to the Engineer immediately.



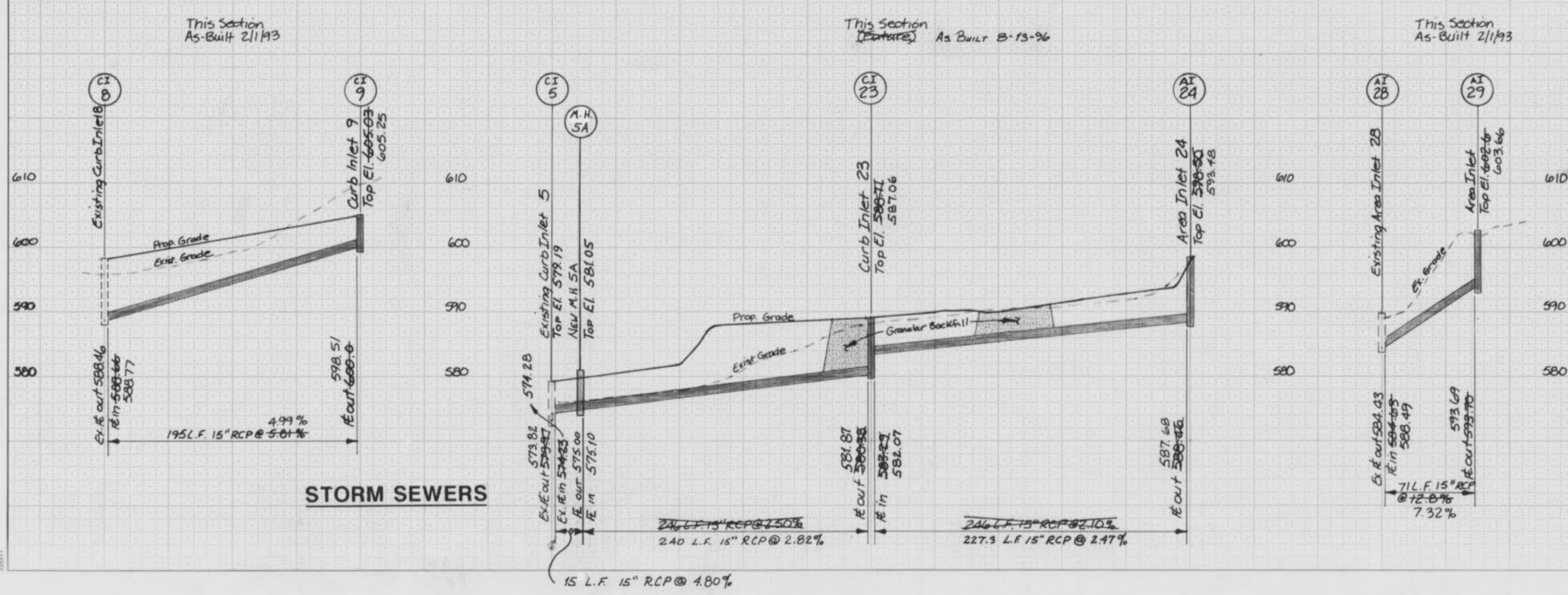
Hillside Mobile Home Park
 AS-BUILTS
 3/4



PROJECT	SHEET NO.	TOTAL SHEETS
STORM & SANITARY SEWER PROFILES	5	8
PROJECT NO.: 6303	DATE: SEPT. 1992	
REVISIONS:	AS BUILT PHASE 2, PART 2 JG-2-1-93 As-Built Phase III, CJG-8-13-96	



SANITARY SEWERS



STORM SEWERS

Note: Final grading was completed under Phase I. Contractor may have to fill some washout areas.

Scale: 1" = 50' Horizontal
1" = 10' Vertical

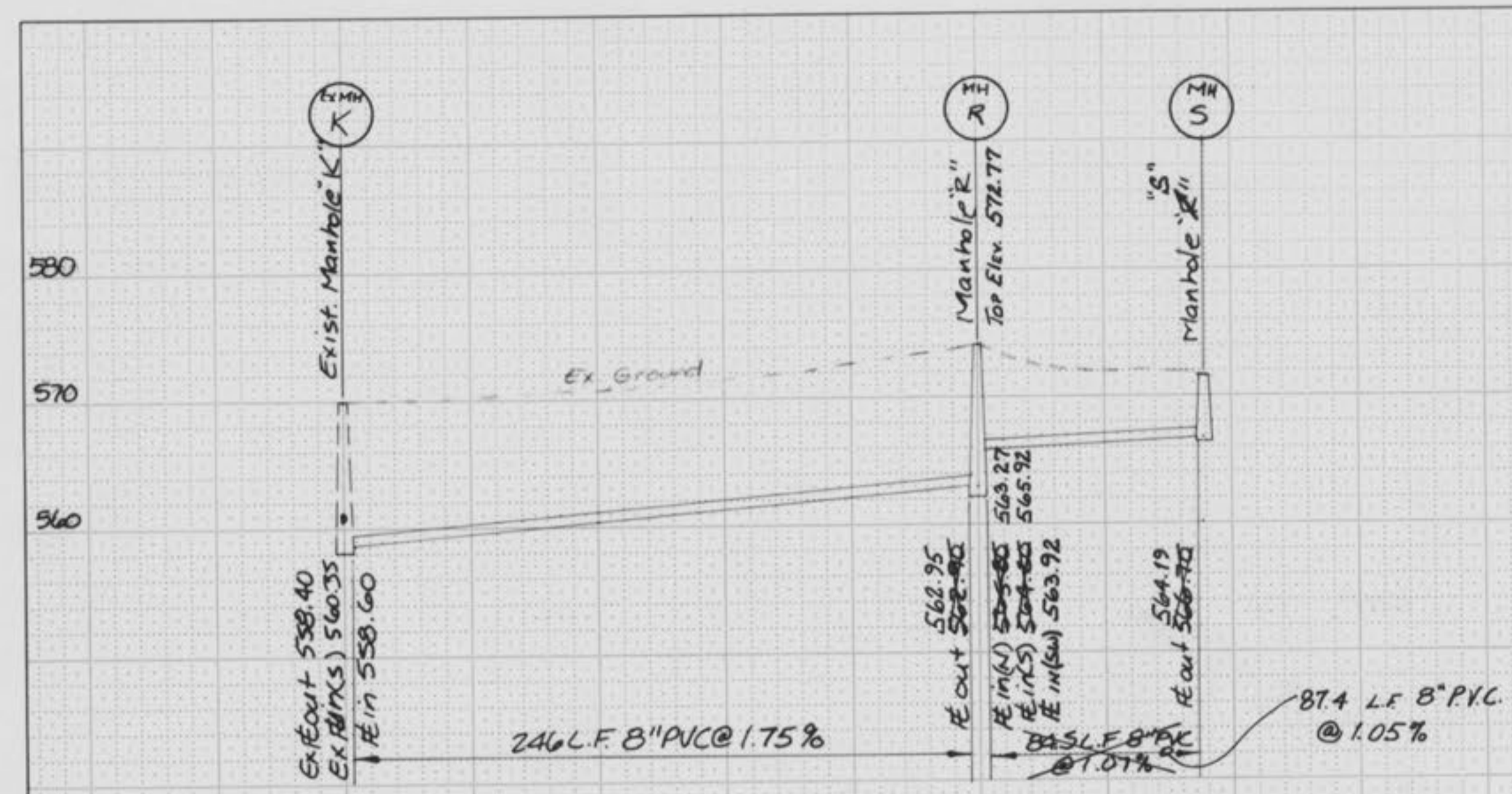
Hillside Mobile Home Park
AS-BUILTS 3/4



GEORGE BUTLER ASSOCIATES, INC.
Engineers / Architects / Landscape Architects / Planners

PROJECT	SHEET NO.	TOTAL SHEETS
PHASE III PROFILES	4	9
PROJECT NO.:	DATE:	
REVISIONS:		

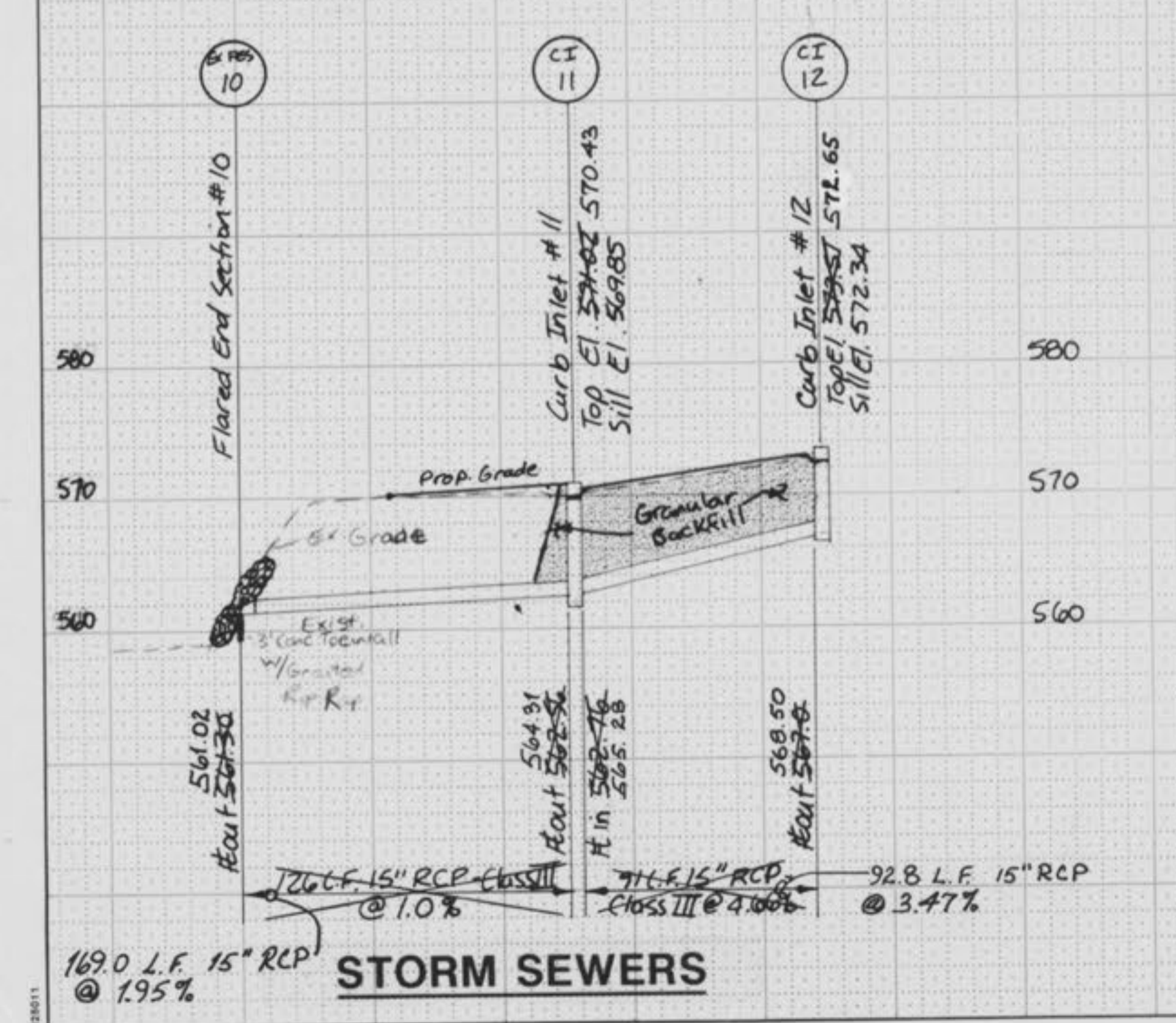
As-Built Phase III
CJG: 8-13-96



SANITARY SEWERS

This SECTION
As-Built 8-13-96

This SECTION
As-Built 8-13-96



STORM SEWERS

