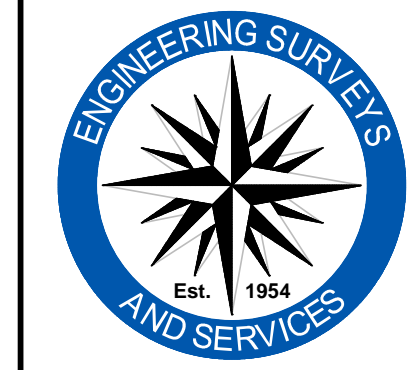
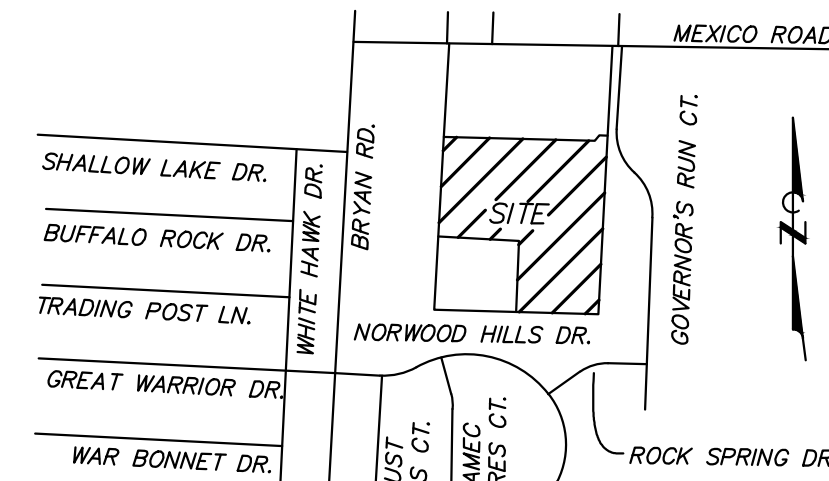


SURVEY CONTROL POINTS

| POINT # | NORTH | EAST | ELEVATION | DESCRIPTION |
|---------|--------|--------|-----------|-------------|
| CP1841 | 516.11 | 668.20 | 618.79 | SPIKE NAIL |
| CP1842 | 609.96 | 533.99 | 618.72 | SPIKE NAIL |
| CP1843 | 602.15 | 294.45 | 616.07 | SPIKE NAIL |
| CP1844 | 391.57 | 258.33 | 619.52 | SPIKE NAIL |

AS-BUILT HILLMANN PLACE - PHASE II O'FALLON, ST. CHARLES COUNTY, MISSOURI DECEMBER 1, 2017



Engineering Surveys and Services
Consulting Engineers, Scientists, and Land Surveyors
Analytical and Material Laboratories
1113 Ego Street, Columbia, Missouri 65201
573-449-2646 - www.ESSS-llc.com

Other Offices:
Jefferson City, Missouri - Sedalia, Missouri
Missouri Land Surveying Corporation # 204046672

VICINITY MAP
NOT TO SCALE
APPROVED
12/11/2017



LEGEND

| | |
|-----|-------------------------------------|
| --- | PROPERTY LINE |
| --- | UNDERGROUND ELECTRIC LINE |
| --- | UNDERGROUND TELECOMMUNICATIONS LINE |
| --- | SANITARY SEWER LINE |
| --- | STORM SEWER LINE |
| --- | GAS LINE |
| --- | WATER LINE |
| --- | FENCE |
| --- | DRAINAGE SWALE |
| --- | EXISTING CONTOUR |
| ⊕ | IRON |
| ⊕ | DRILL HOLE |
| ⊕ | TEST BORING |
| ⊕ | A/C ON PAD (TYP) |
| ⊕ | BOLLARD |
| ⊕ | BOLLARD LIGHT |
| ⊕ | CORRUGATED METAL PIPE |
| ⊕ | CORRUGATED PLASTIC PIPE |
| ⊕ | ELECTRIC METER |
| ⊕ | ELECTRIC PEDESTAL |
| ⊕ | FIRE DEPARTMENT CONNECTION |
| ⊕ | FIRE HYDRANT |
| ⊕ | FLOW LINE |
| ⊕ | FLAG POLE |
| ⊕ | FP |
| ⊕ | HDPE |
| ⊕ | LH |
| ⊕ | LS |
| ⊕ | NDB |
| ⊕ | NYLOPLAST DRAIN BASIN |
| ⊕ | NYLOPLAST INLINE DRAIN |
| ⊕ | PVC |
| ⊕ | POLYVINYL CHLORIDE PIPE |
| ⊕ | REINFORCED CONCRETE PIPE |
| ⊕ | ROOF DRAIN |
| ⊕ | TELECOMMUNICATIONS |
| ⊕ | TELECOMMUNICATIONS PEDESTAL |
| ⊕ | UNDERGROUND ROOF DRAIN |
| ⊕ | WATER METER |
| ⊕ | WATER VALVE |
| ⊕ | YARD LIGHT |

BENCH MARK

BM - CHISELED SQUARE ON THE SOUTHWEST CORNER OF CONCRETE TRANSFORMER PAD LOCATED 35' EAST OF HILLMANN FARM PLAZA AND 30 FEET WEST OF THE SURVEYED PROPERTY. ELEVATION = 620.57

TBM 1 - CHISELED SQUARE ON THE NORTHEAST CORNER OF A SIDE OPEN INLET LOCATED 90 FEET SOUTHEAST OF NORTHEAST CORNER OR SURVEYED PROPERTY, AND 10 FEET WEST OF GOVERNOR'S RUN COURT. ELEVATION = 610.35

TBM 2 - CHISELED SQUARE ON THE SOUTHWEST CORNER OF A SIDE OPEN INLET LOCATED 35 FEET NORTHEAST OF THE SOUTHWEST CORNER OF THE SURVEYED PROPERTY. ELEVATION = 615.89

UTILITY NOTES

THE LOCATIONS, SIZES, AND MATERIAL TYPES OF UNDERGROUND UTILITIES INDICATED ON THE PLAT, NOT VISIBLE OR APPARENT FROM THE SURFACE, ARE SHOWN IN THEIR APPROXIMATE LOCATION FROM A MISSOURI ONE CALL SYSTEM LOCATE, OR UTILITY COMPANY RECORDS AND WERE NOT VERIFIED IN THE FIELD. UNDERGROUND UTILITY SERVICES TO BUILDINGS WERE NOT LOCATED. IRRIGATION LINES NOT SHOWN. UNDERGROUND ELECTRIC TO LIGHT STANDARDS NOT SHOWN.

WATER
PUBLIC WATER SUPPLY DISTRICT NO. 2
100 WATER DRIVE, P.O. BOX 370
O'FALLON, MO 63366
CONTACT: TARA RINEY 636-639-8306
AS SHOWN

ELECTRIC
AMEREN UE
200 CALLAHAN ROAD
WENTZVILLE, MO 63385
CONTACT: TARA RINEY 636-639-8306
AS SHOWN

GAS
LACLEDE GAS
6400 GRAHAM ROAD
ST. LOUIS, MO 63134
CONTACT: KENT THAEMERT 314-522-2297
AS SHOWN

TELEPHONE
CENTURYLINK
1151 CENTURYTEL DRIVE, BLDG A
WENTZVILLE, MO 63385
CONTACT: MICHELLE GERTEISEN 636-332-7683
AS SHOWN

TELEVISION
CHARTER COMMUNICATIONS
815 CHARTER COMMONS DRIVE
TOWN AND COUNTRY, MO 63017
CONTACT: LISA M. WARD 636-387-6633
AS SHOWN

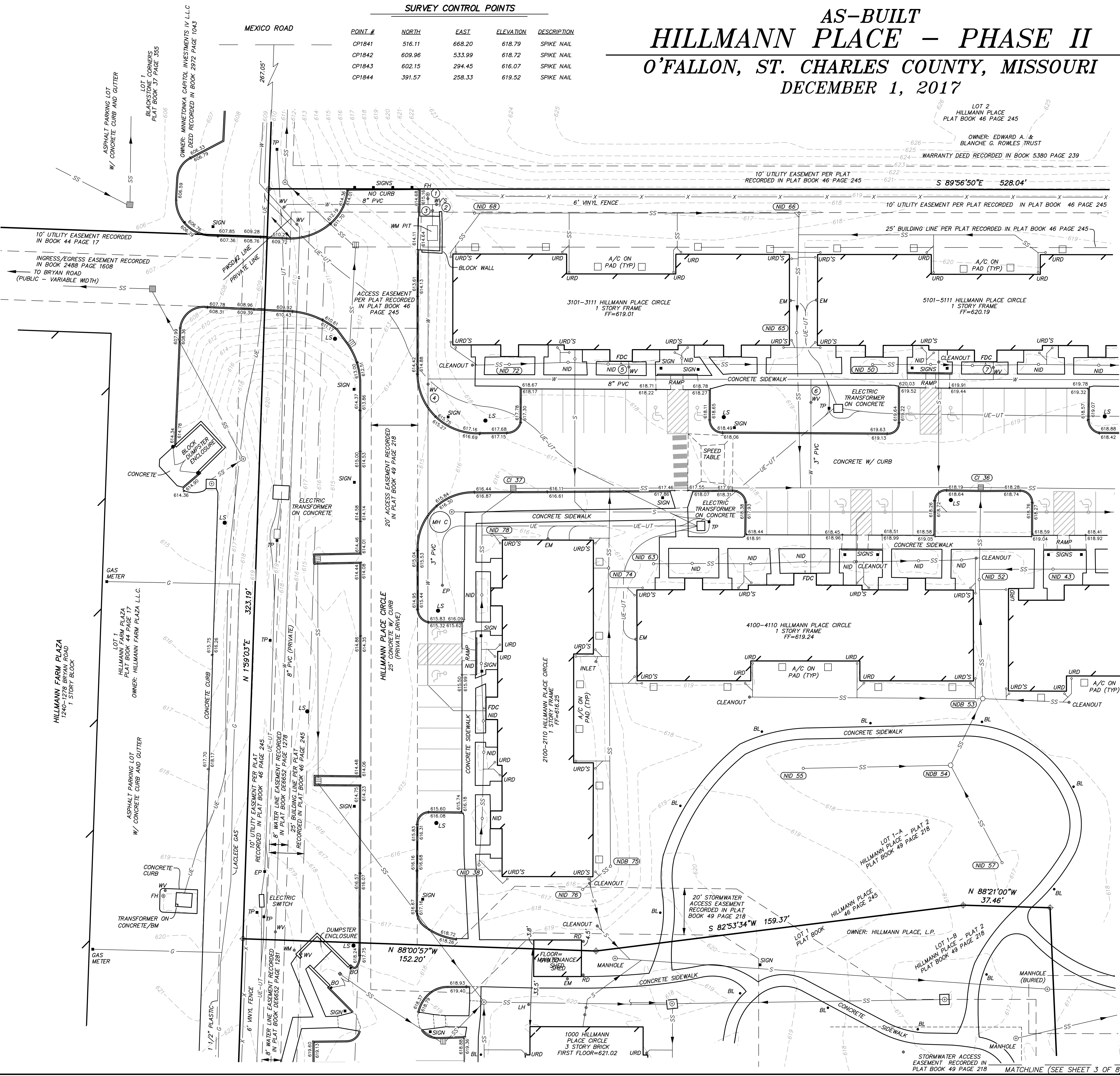
SANITARY SEWER
CITY OF O'FALLON
100 N MAIN ST.
O'FALLON, MO 63366
CONTACT: 636-281-2858
AS SHOWN

STORM SEWER
CITY OF O'FALLON
100 N MAIN ST.
O'FALLON, MO 63366
CONTACT: 636-281-2858
AS SHOWN

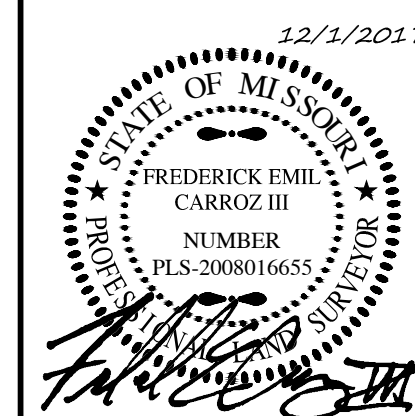
| VALVE # | TOP OF VALVE BOX | TOP NUT ELEVATION |
|---------|------------------|-------------------|
| 1 | 614.99 | 611.39 |
| 2 | 615.63 | 611.98 |
| 3 | 614.60 | 612.13 |
| 4 | 614.97 | 612.51 |
| 5 | 618.80 | 614.85 |
| 6 | 619.52 | 615.02 |
| 7 | 620.11 | 616.59 |

MATCH LINE (SEE SHEET 2 OF 8)

MATCHLINE (SEE SHEET 3 OF 8)



AS-BUILT HILLMANN PLACE PHASE II O'FALLON, ST. CHARLES COUNTY, MISSOURI



FREDERICK E. CARROZ III
PROFESSIONAL LAND SURVEYOR
PLS - 2088016655

IF ORIGINAL SIGNATURE OR DIGITAL AUTHENTICATION IS NOT PRESENT THIS MEDIA SHOULD NOT BE CONSIDERED A CERTIFIED DOCUMENT.

Date
DECEMBER 1, 2017

Revised

Surveyed: NTL Drawn: RTM

AS-BUILT

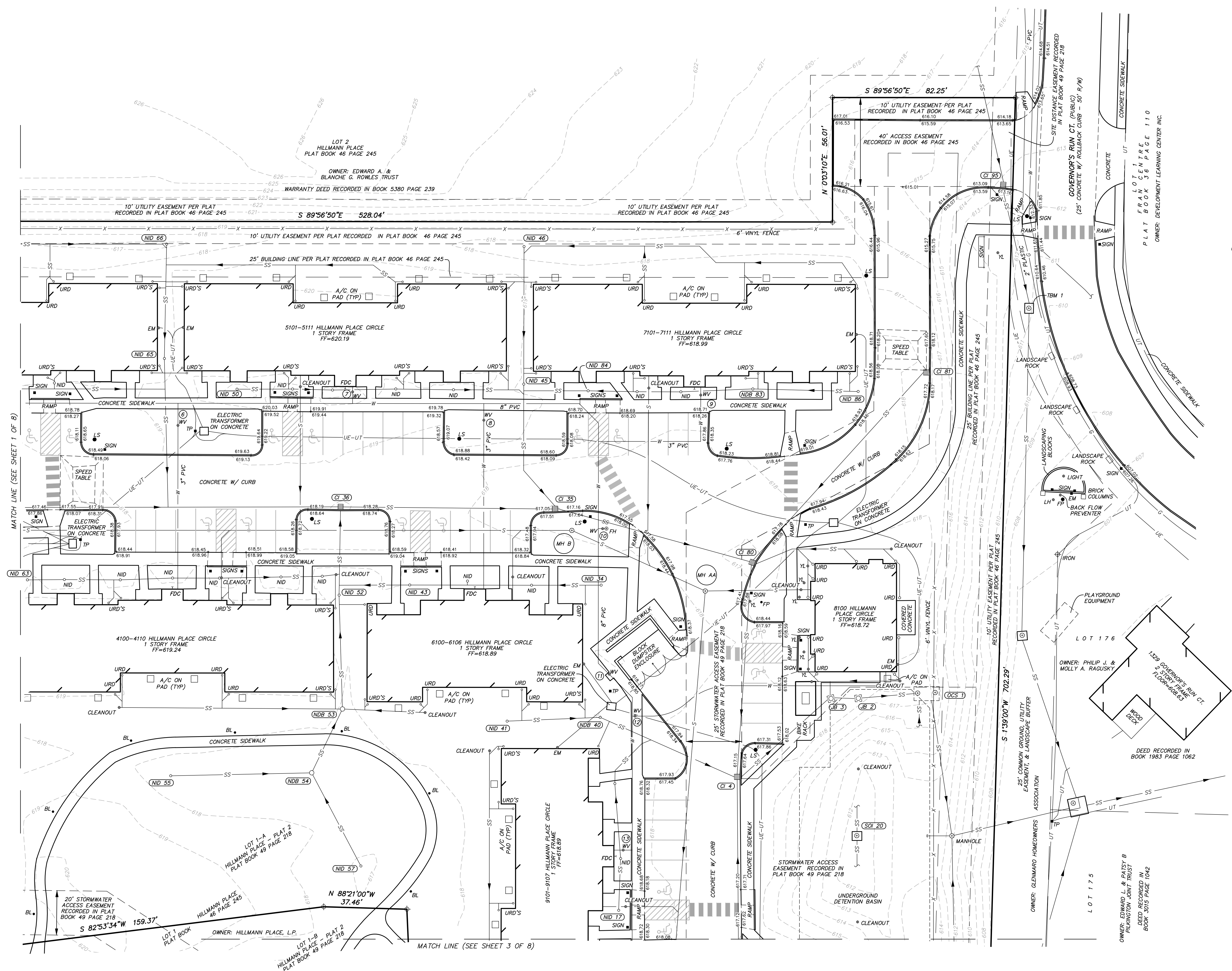
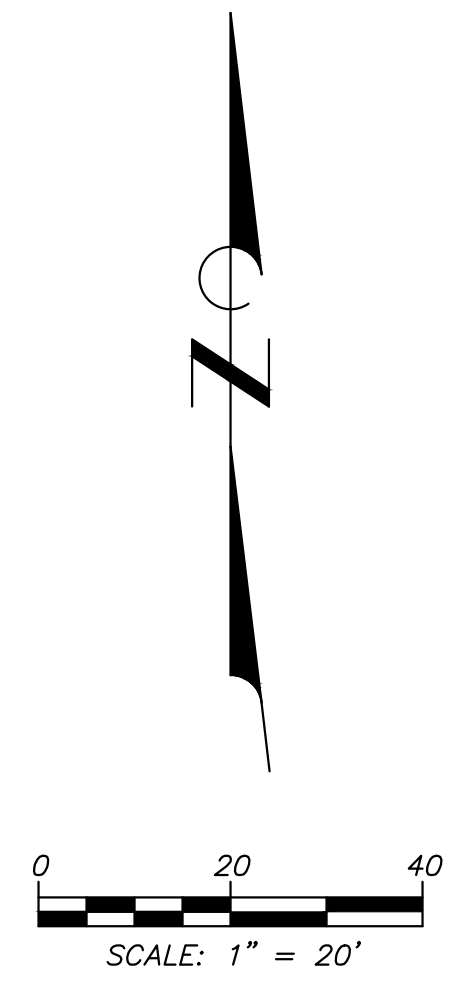
Sheet

V1.01

1 OF 8
ES&S PROJECT NO. 13755



Engineering Surveys and Services
 Consulting Engineers, Scientists, and Land Surveyors
 Analytical and Material Laboratories
 1113 Eng. Street, Columbia, Missouri 65201
 573-449-2646 • www.ESSS-llc.com
 Other Offices:
 Jefferson City, Missouri • St. Louis, Missouri
 Missouri Land Surveying Corporation # 204046672



| VALVE # | TOP OF VALVE BOX | TOP NUT ELEVATION |
|---------|------------------|-------------------|
| ⑧ | 619.38 | 615.53 |
| ⑨ | 618.78 | 615.96 |
| ⑩ | 617.86 | 615.66 |
| ⑪ | 618.95 | 615.05 |
| ⑫ | 618.87 | 614.17 |
| ⑬ | 618.92 | 615.52 |

AS-BUILT
HILLMANN PLACE PHASE II
 OFFALON, ST. CHARLES COUNTY, MISSOURI



FREDERICK E. CARROZ III
 PROFESSIONAL LAND SURVEYOR
 PLS - 2008016655

IF ORIGINAL SIGNATURE OR DIGITAL AUTHENTICATION IS NOT PRESENT THIS MEDIA SHOULD NOT BE CONSIDERED A CERTIFIED DOCUMENT.

Date
DECEMBER 1, 2017

Revised

Surveyed: NTL Drawn: RTM

AS-BUILT

Sheet
V1.02
 2 OF 8

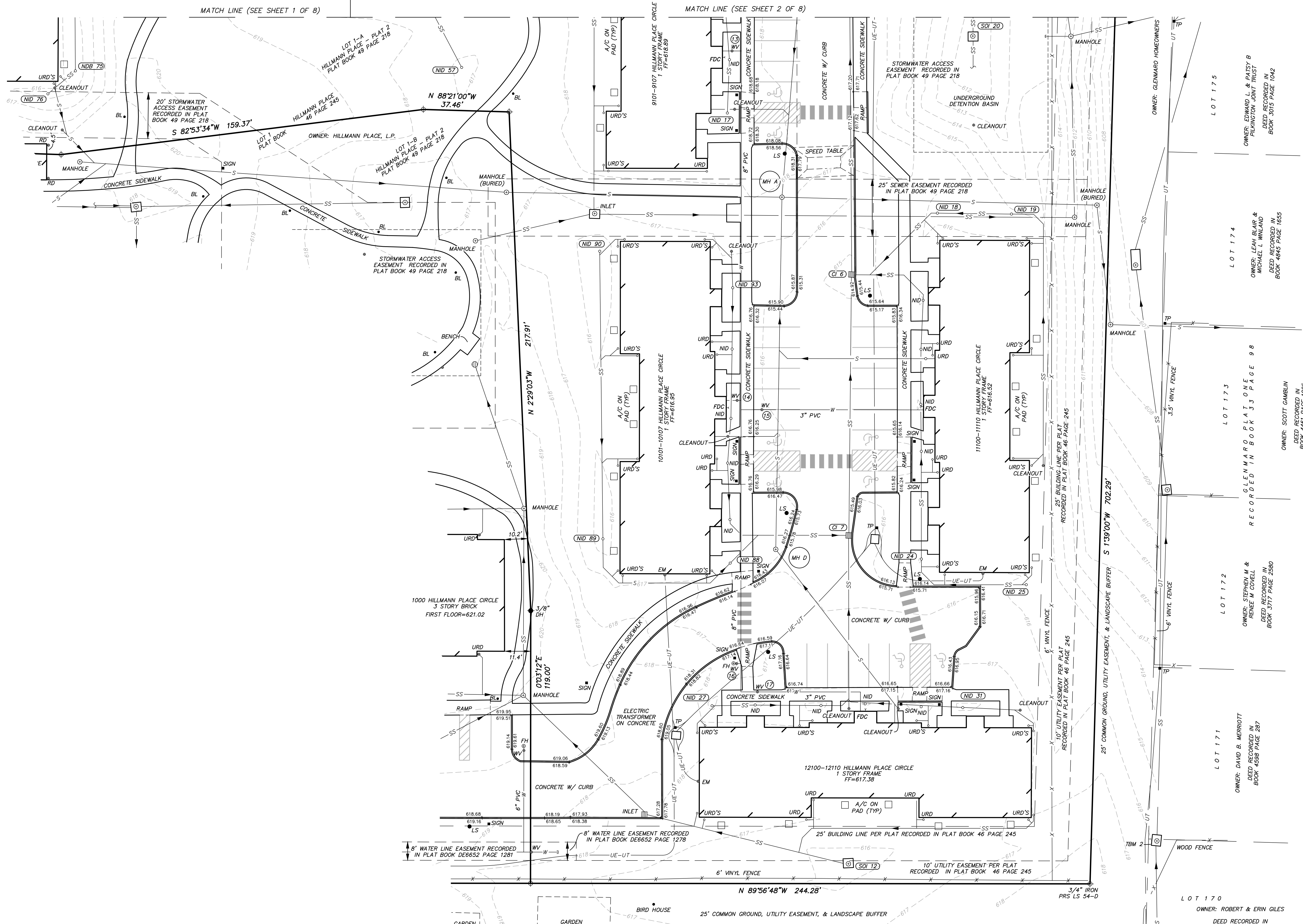
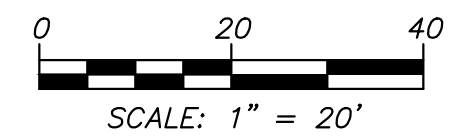
ESS&S PROJECT NO. 13755

F:\CURRENTDRAWINGS\HILLMANN\13754\13754 ALTA.DWG 12/1/2017



Engineering Surveys and Services
 Consulting Engineers, Scientists, and Land Surveyors
 Analytical and Material Laboratories
 1113 Ego Street, Columbia, Missouri 65201
 571-449-2646 • www.ESSS-llc.com
 Other Offices:
 Jefferson City, Missouri • Sedalia, Missouri
 Missouri Land Surveying Corporation # 204046672

AS-BUILT
HILLMANN PLACE PHASE II
 O'FALLON, ST. CHARLES COUNTY, MISSOURI



| VALVE # | TOP OF VALVE BOX | TOP NUT ELEVATION |
|---------|------------------|-------------------|
| (14) | 616.85 | 612.60 |
| (15) | 616.13 | 611.83 |
| (16) | 617.05 | 615.05 |
| (17) | 617.20 | 614.00 |



FREDERICK E. CARROZ III
 PROFESSIONAL LAND SURVEYOR
 PLS - 2008016655

IF ORIGINAL SIGNATURE OR DIGITAL AUTHENTICATION IS NOT PRESENT THIS MEDIA SHOULD NOT BE CONSIDERED A CERTIFIED DOCUMENT.

Date
DECEMBER 1, 2017

Revised

Surveyed: NTL Drawn: RTM

AS-BUILT

Sheet

V1.03

3 OF 8

ES&S PROJECT NO. 13755

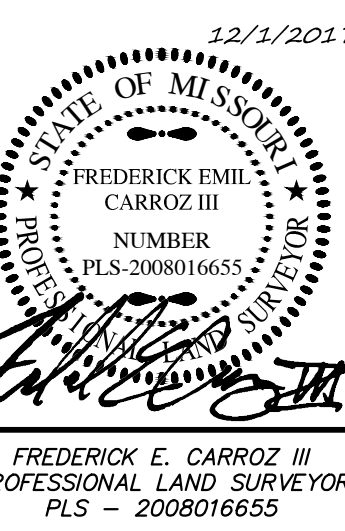
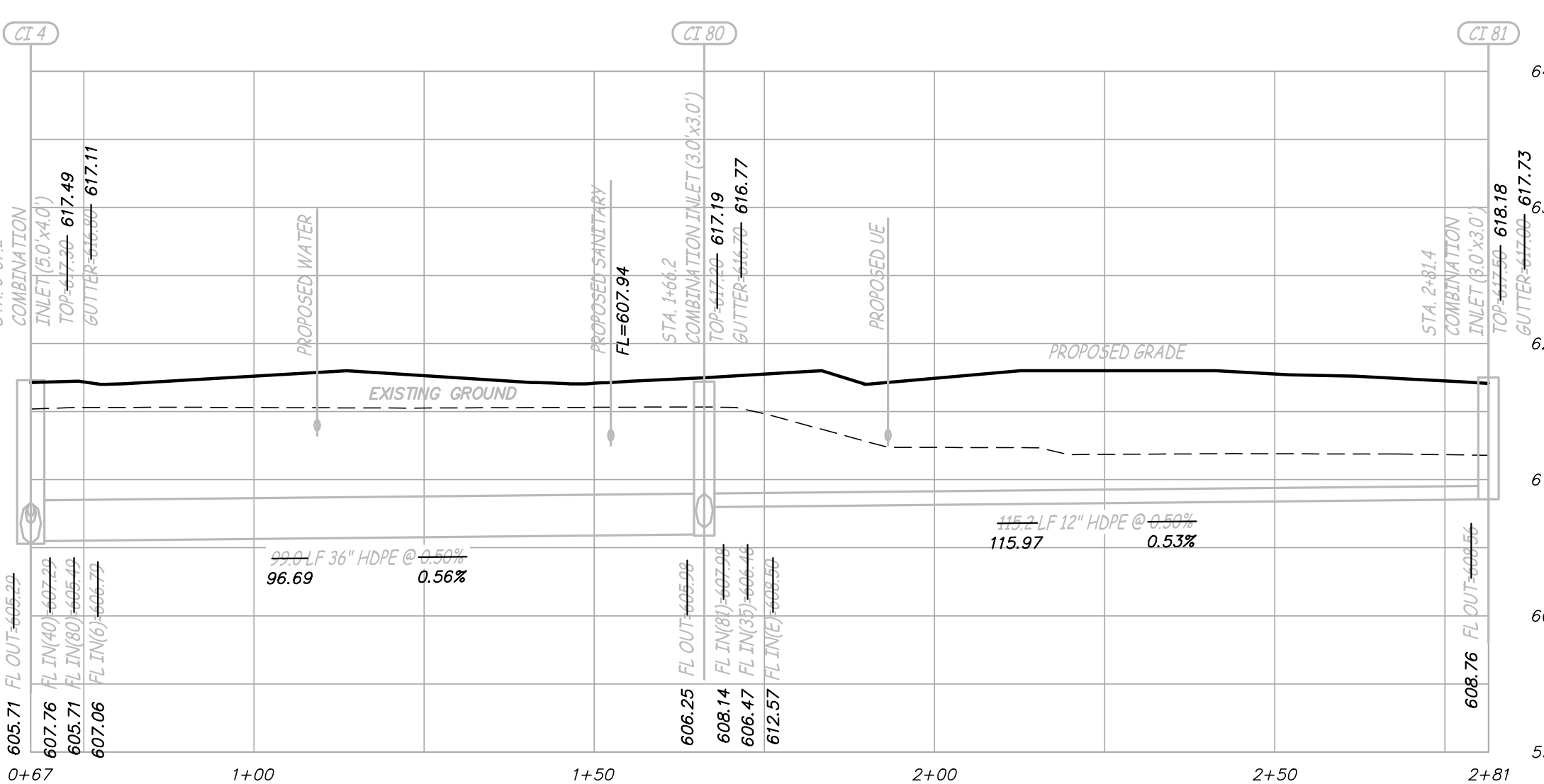
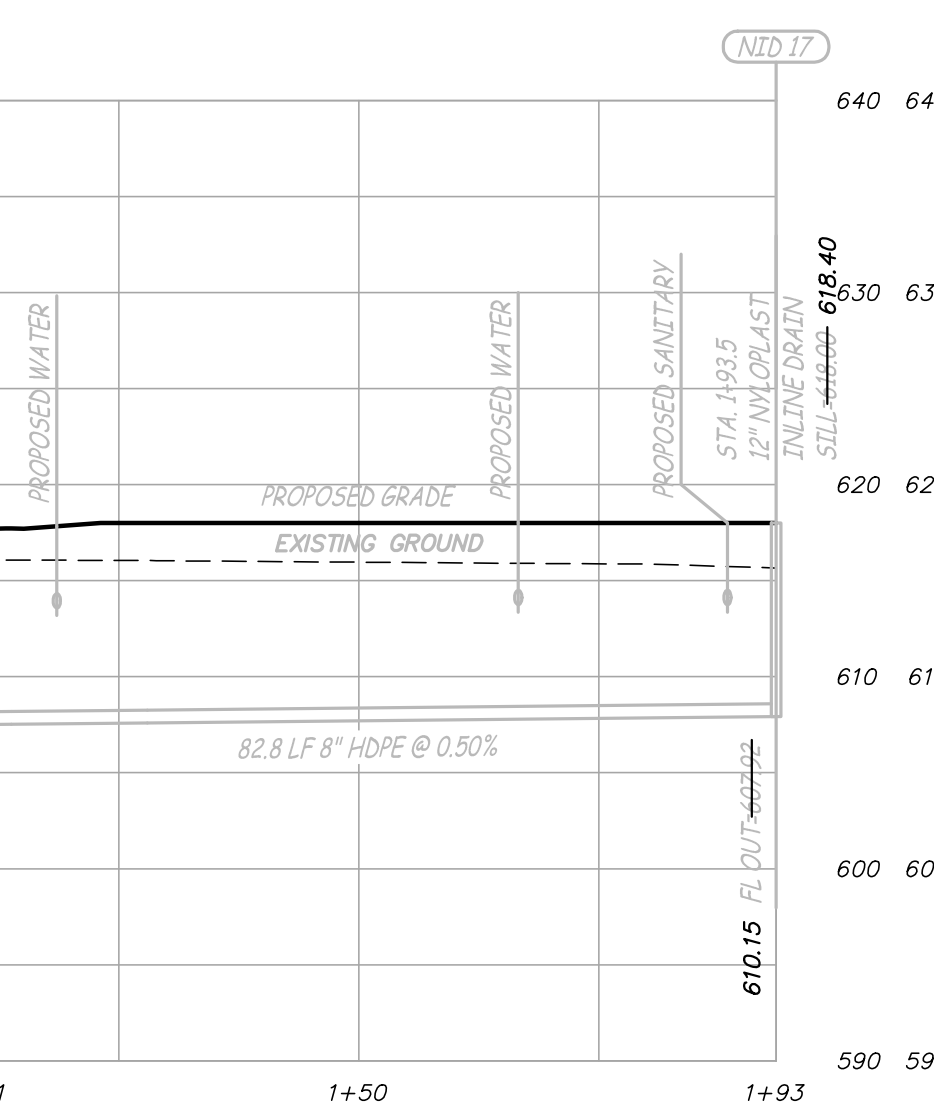
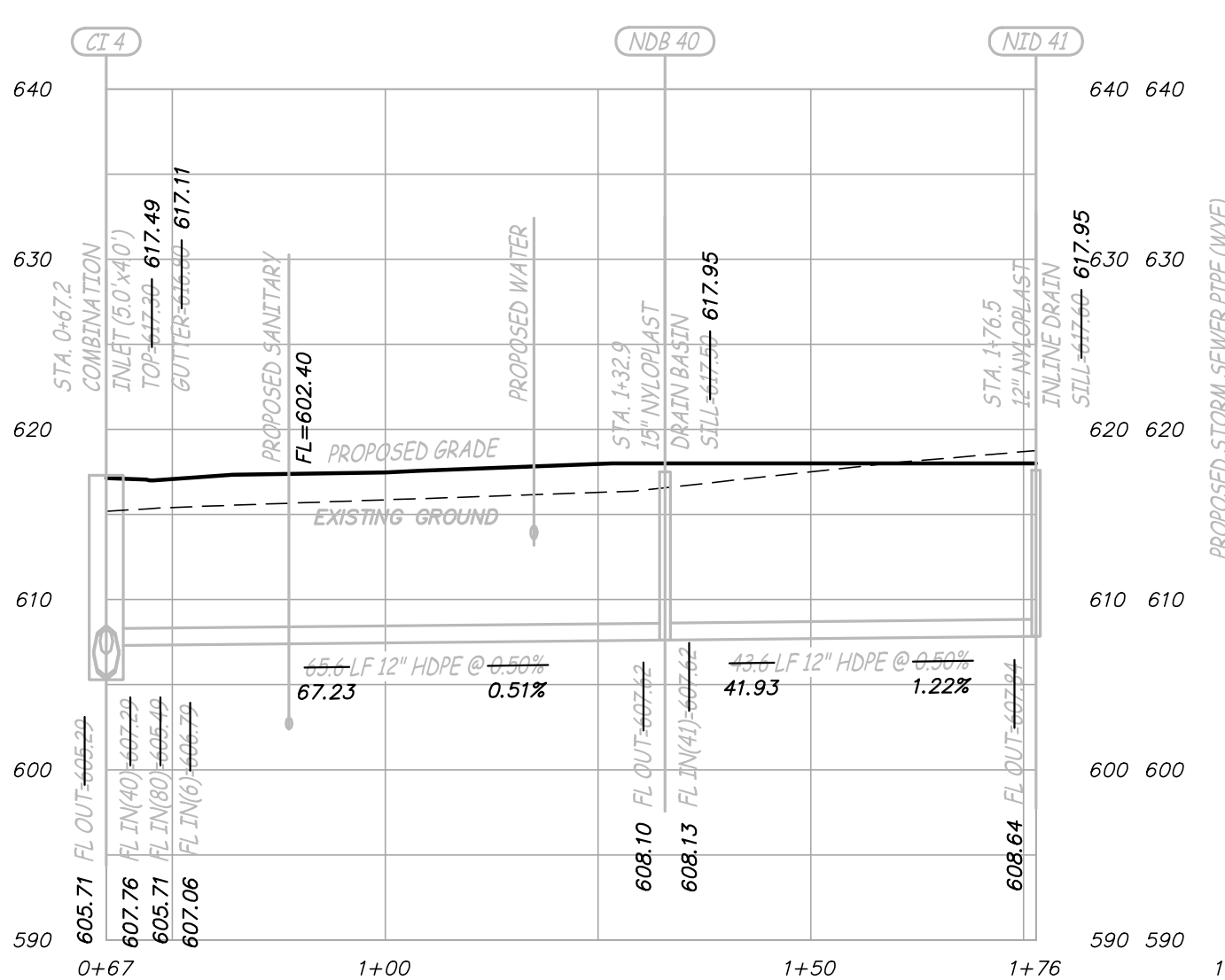
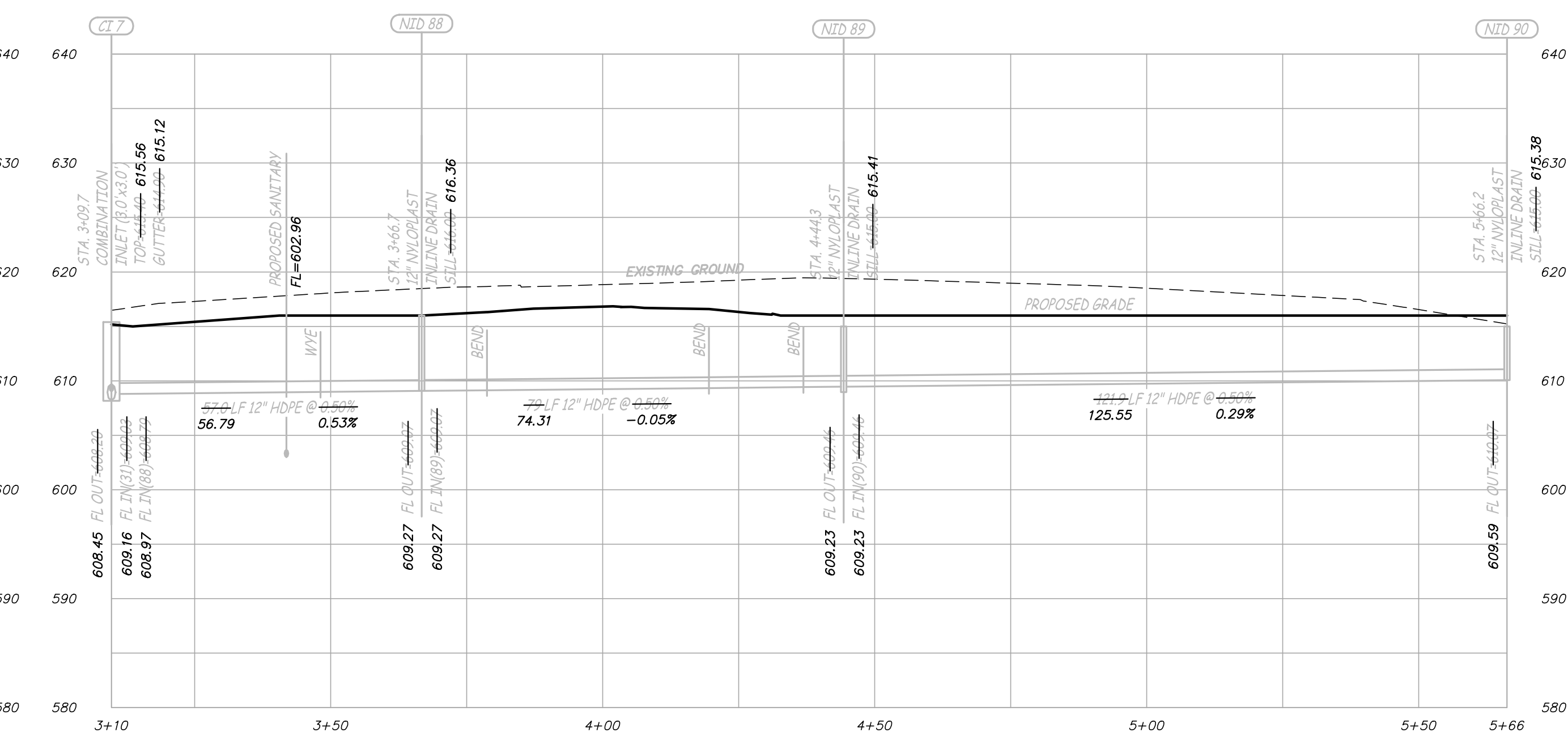
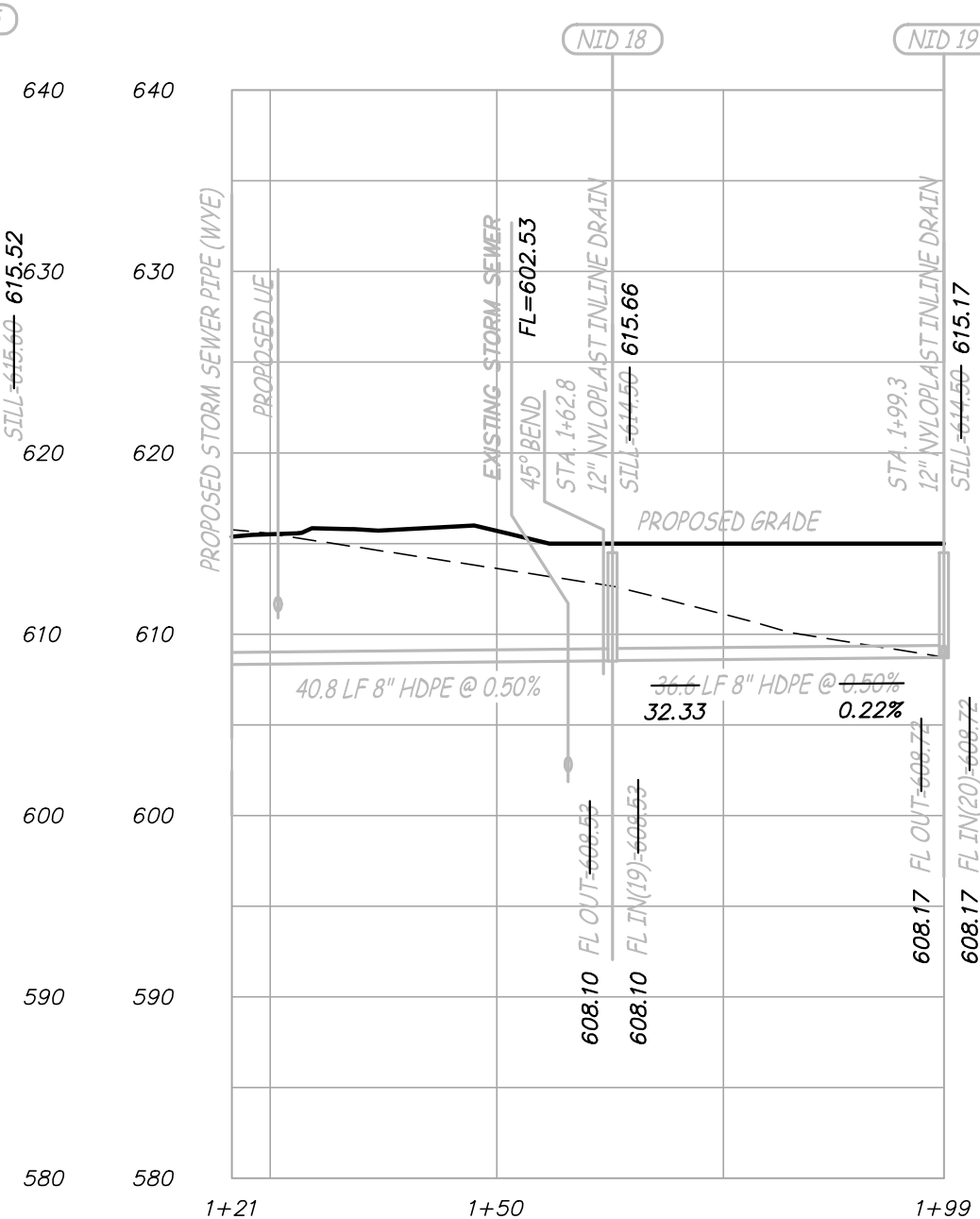
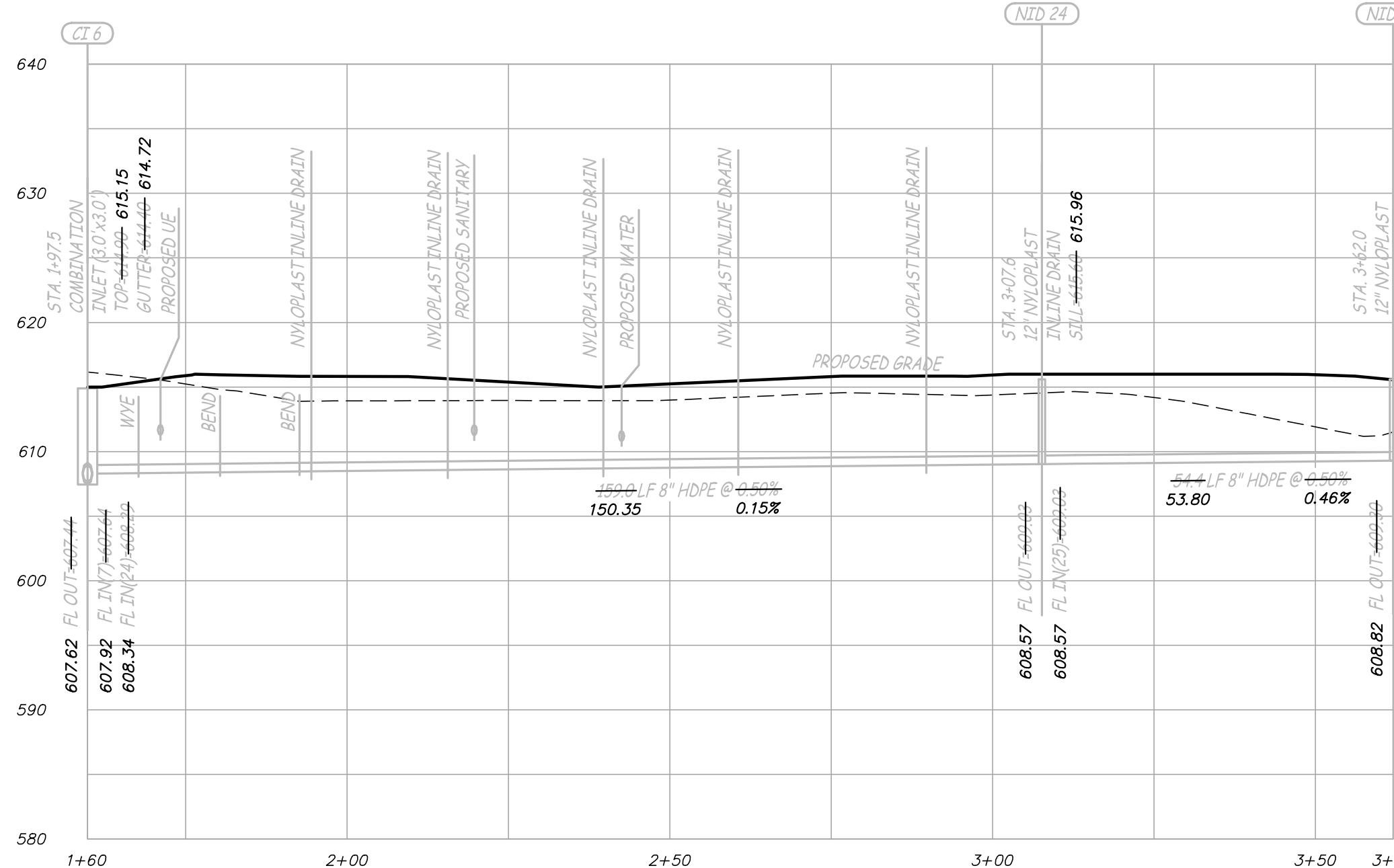
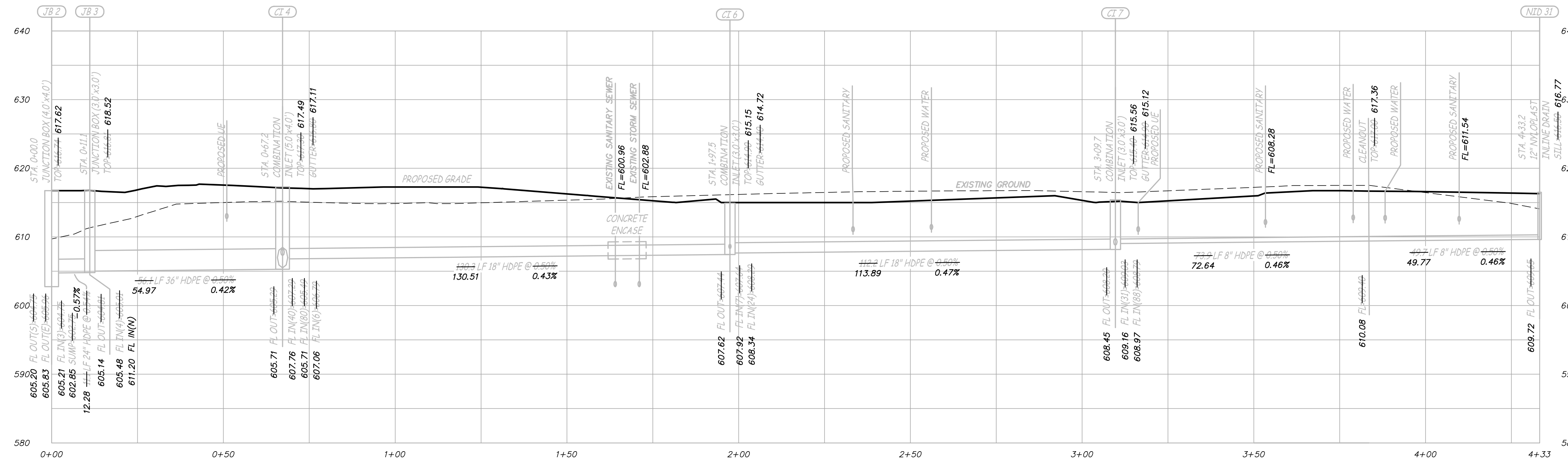
F:\CURRENTDRAWINGS\HILLMANN\13754\13754-13754-ALTA.DWG 12/1/2017



Engineering Surveys and Services
 Consulting Engineers, Scientists, and Land Surveyors
 Analytical and Material Laboratories
 1113 Eng. Street, Columbia, Missouri 65201
 573-449-2646 • www.ESSS-llc.com

Other Offices:
 Jefferson City, Missouri • Sedalia, Missouri
 Missouri Land Surveying Corporation # 204046672

AS - BUILT
HILLMAN PLACE PHASE II
 OF FALLON, ST. CHARLES COUNTY, MISSOURI



IF ORIGINAL SIGNATURE OR DIGITAL AUTHENTICATION IS NOT PRESENT THIS MEDIA SHOULD NOT BE CONSIDERED A CERTIFIED DOCUMENT.

Date
DECEMBER 1, 2017

Revised

Surveyed by: NTL Drawn by: RTM

STORM SEWER AS-BUILT

Sheet
V1.04

4 OF 8

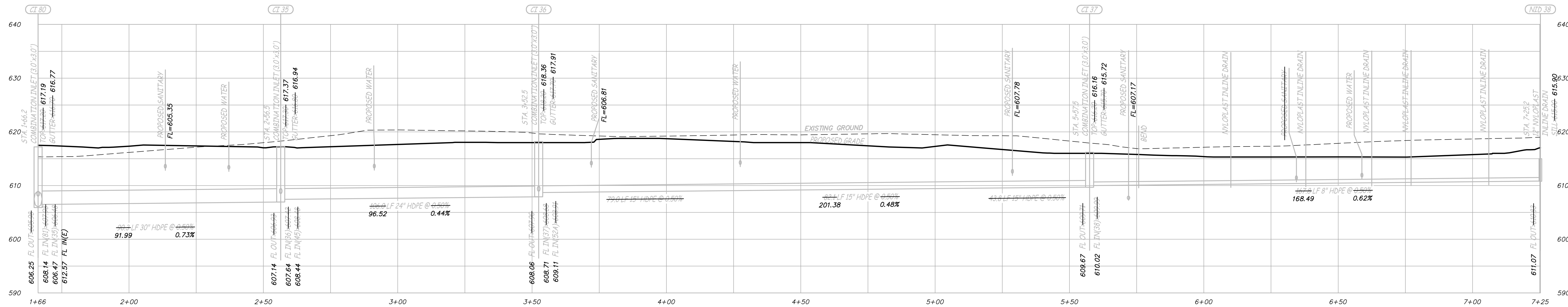
ESS&S PROJECT NO. 13755



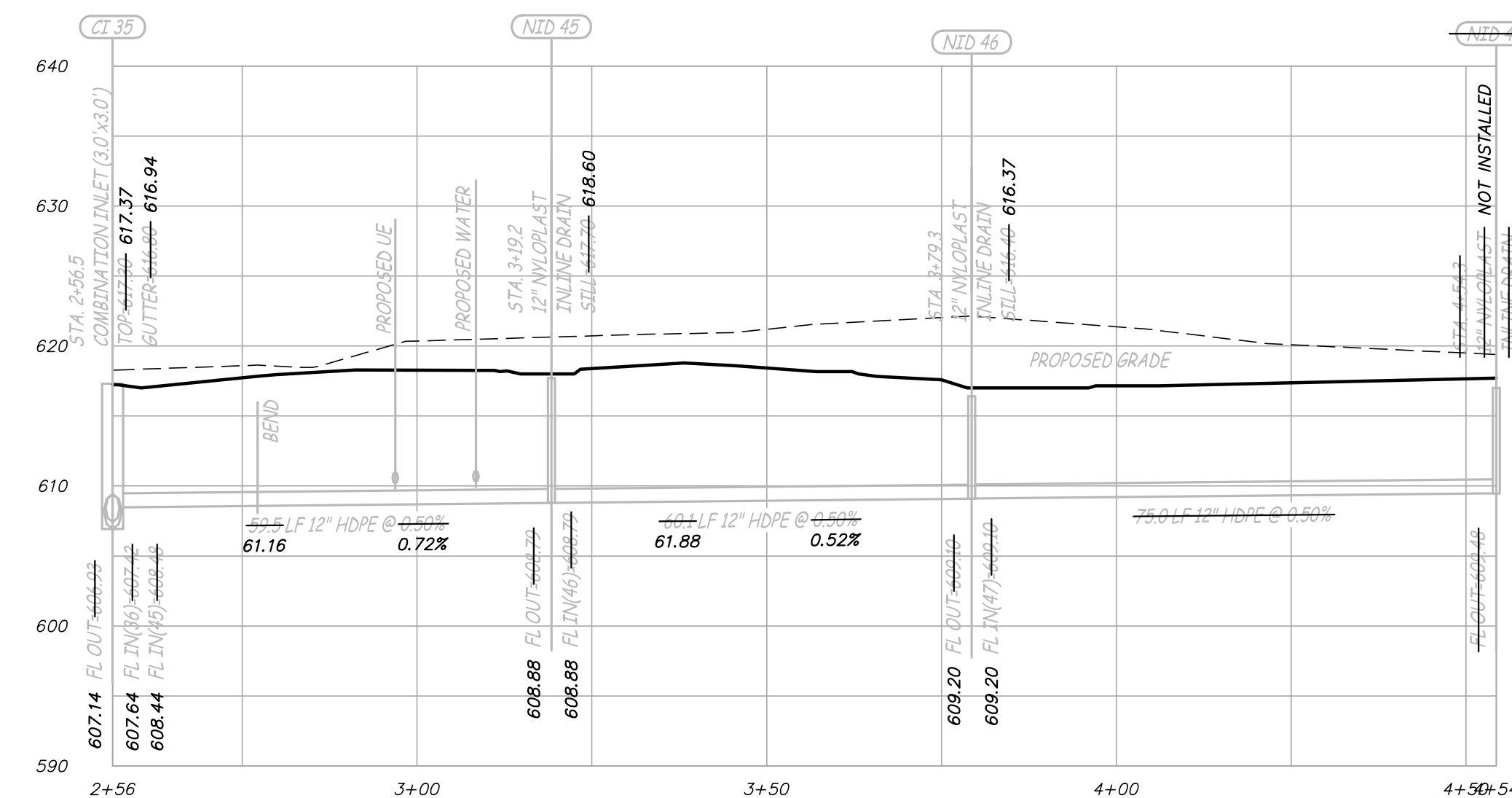
Engineering Surveys and Services
 Consulting Engineers, Scientists, and Land Surveyors
 Analytical and Material Laboratories
 1113 Eng. Street, Columbia, Missouri 65201
 573-449-2646 • www.ES&S-llc.com

Other Offices:
 Jefferson City, Missouri • Sedalia, Missouri
 Missouri Land Surveying Corporation # 204046672

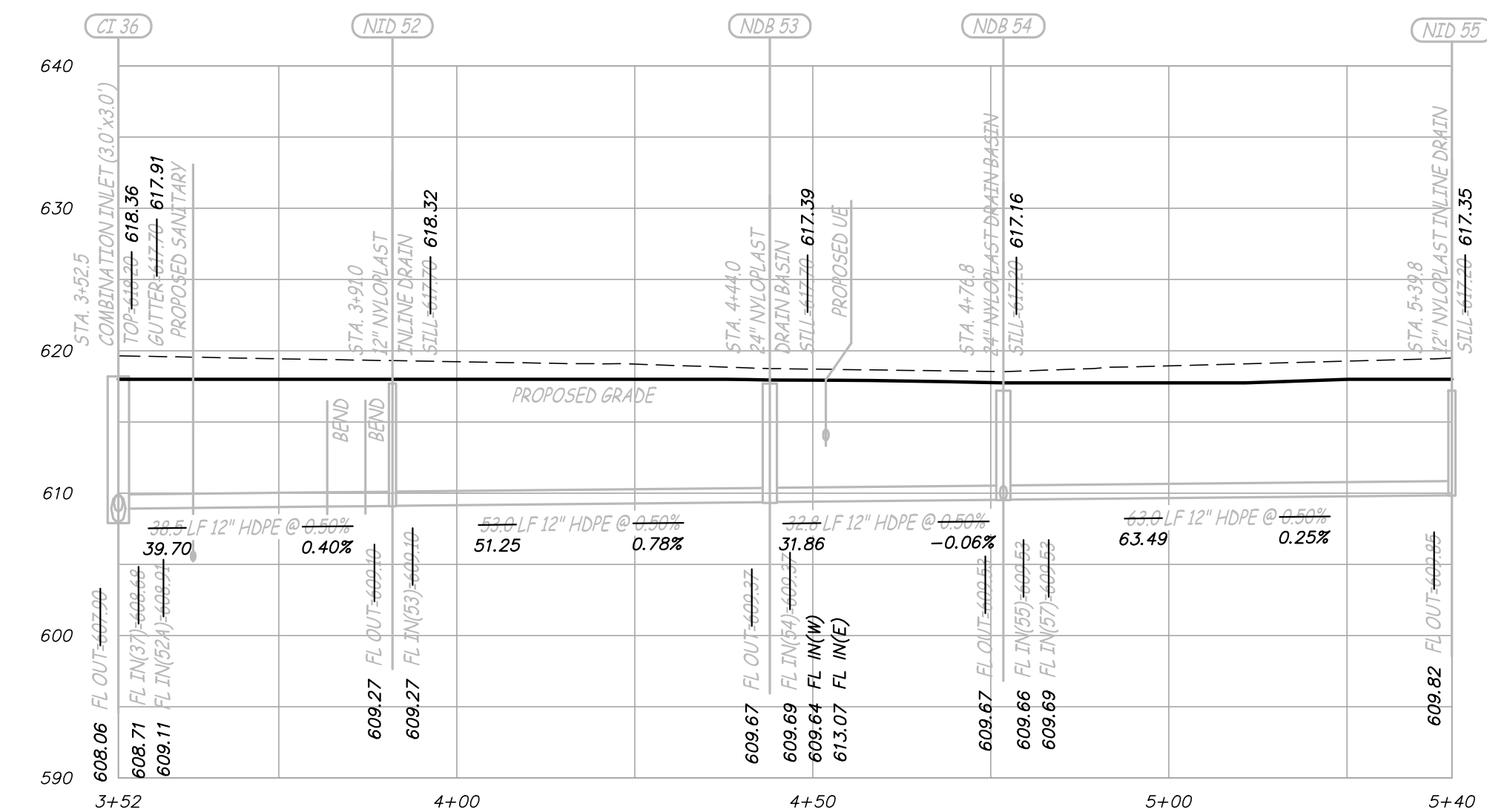
AS - BUILT
HILLMAN PLACE PHASE II
 OFALLON, ST. CHARLES COUNTY, MISSOURI



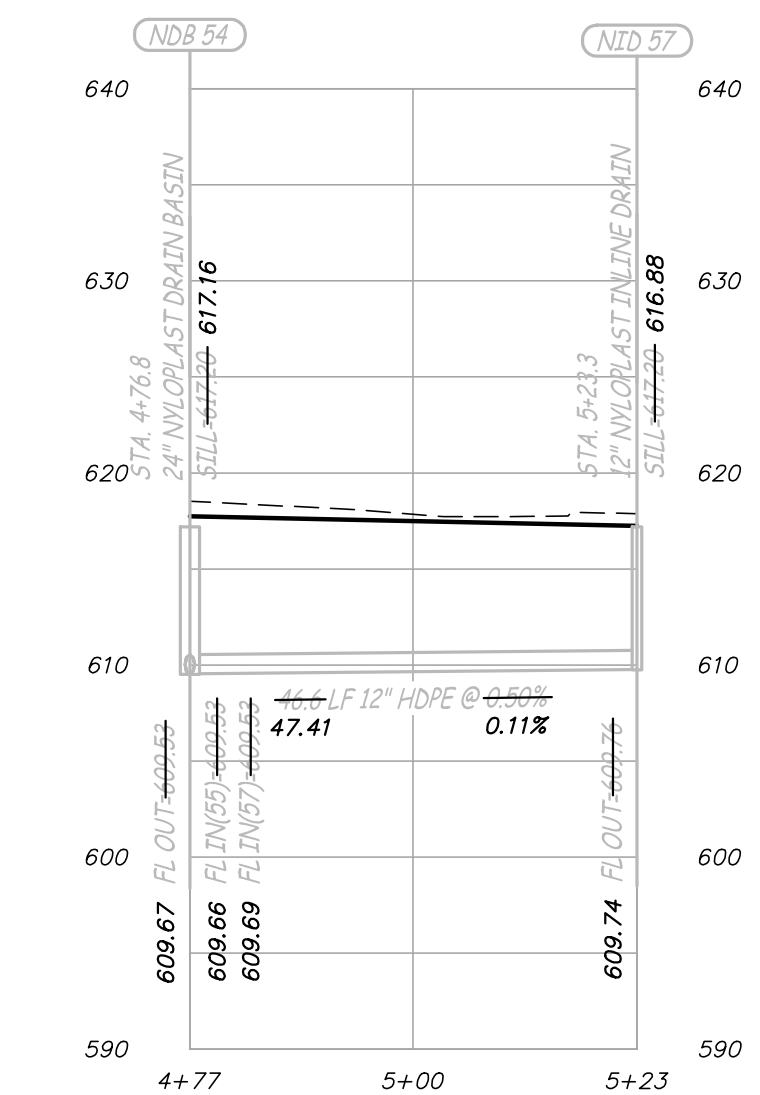
CI 80 THRU CO 38 (PRIVATE)
 SCALE - HORIZ. 1" = 20'
 VERT. 1" = 10'



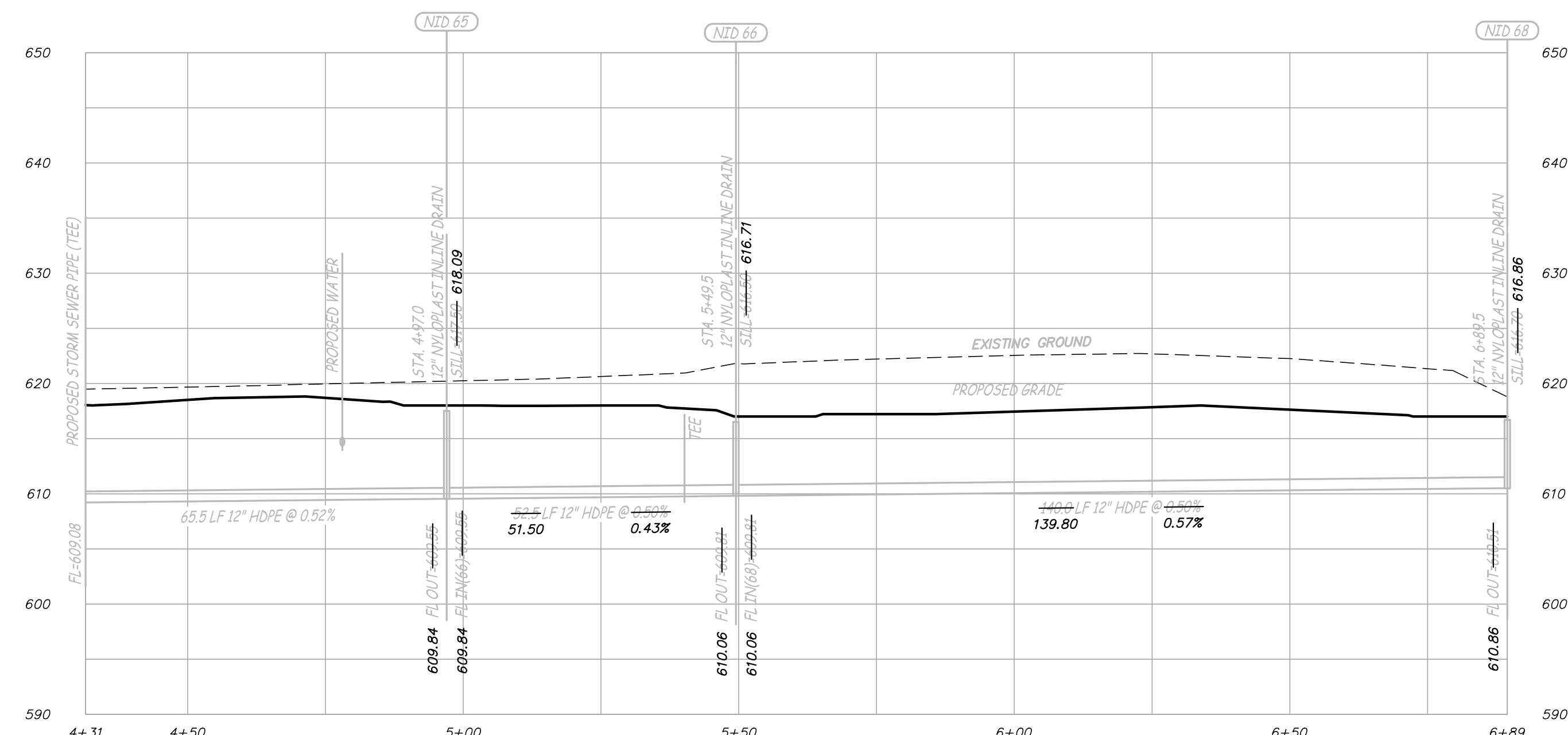
CI 35 THRU NID 47 (PRIVATE)
 SCALE - HORIZ. 1" = 20'
 VERT. 1" = 10'



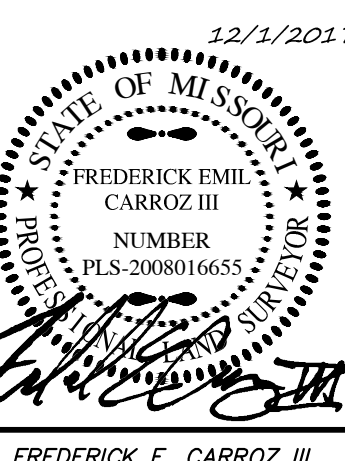
CI 36 THRU NID 55 (PRIVATE)
 SCALE - HORIZ. 1" = 20'
 VERT. 1" = 10'



NDB 54 THRU NID 57 (PRIVATE)
 SCALE - HORIZ. 1" = 20'
 VERT. 1" = 10'



PIPE 37 THRU NID 68 (PRIVATE)
 SCALE - HORIZ. 1" = 20'
 VERT. 1" = 10'



FREDERICK E. CARROZ III
 PROFESSIONAL LAND SURVEYOR
 PLS - 2008016655

IF ORIGINAL SIGNATURE OR DIGITAL AUTHENTICATION IS NOT PRESENT THIS MEDIA SHOULD NOT BE CONSIDERED A CERTIFIED DOCUMENT.

Date
DECEMBER 1, 2017

Revised

Surveyed: NTL Drawn: RTM

STORM SEWER
AS-BUILT

Sheet
V1.05

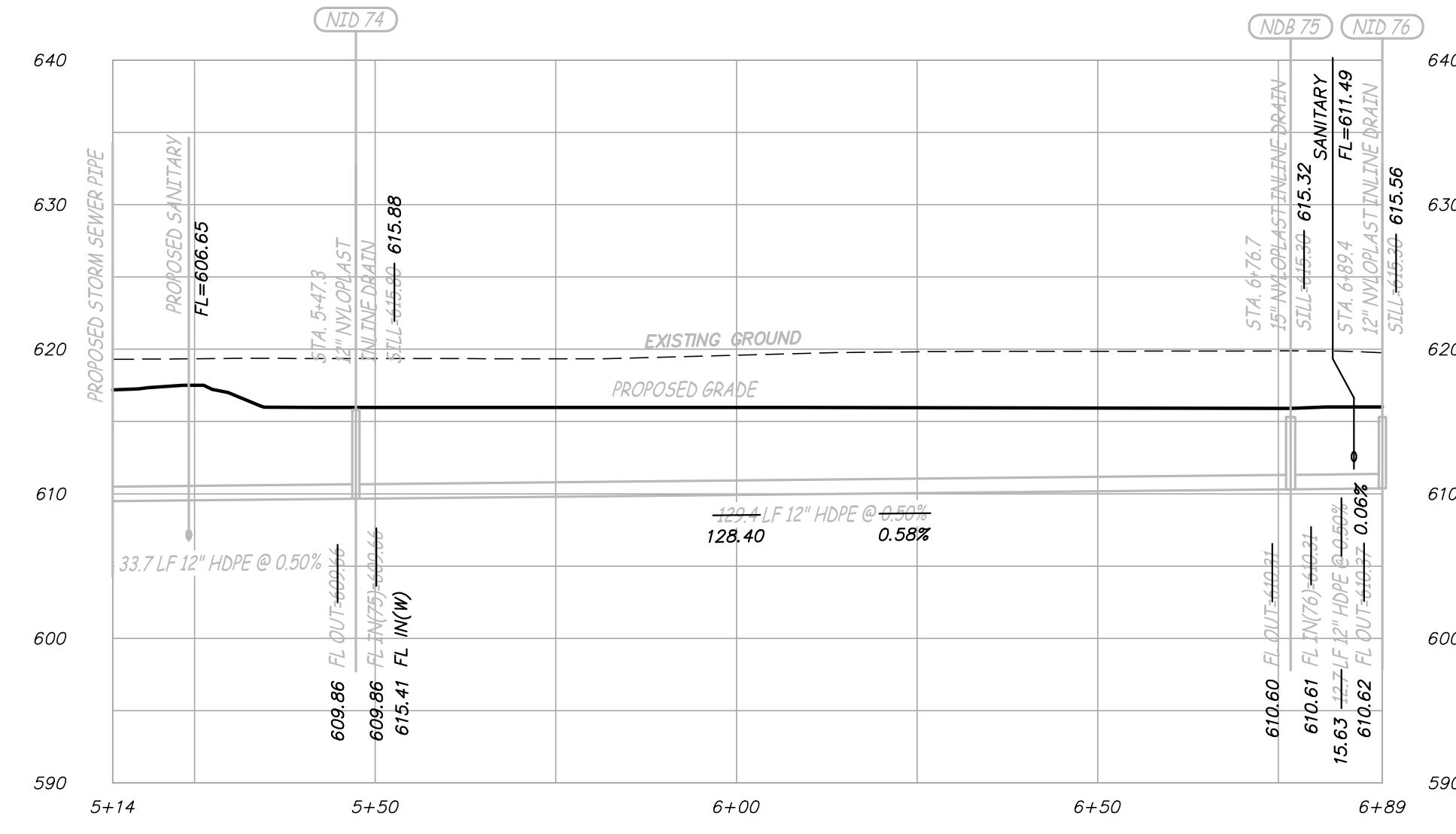
5 OF 8

ES&S PROJECT NO. 13755

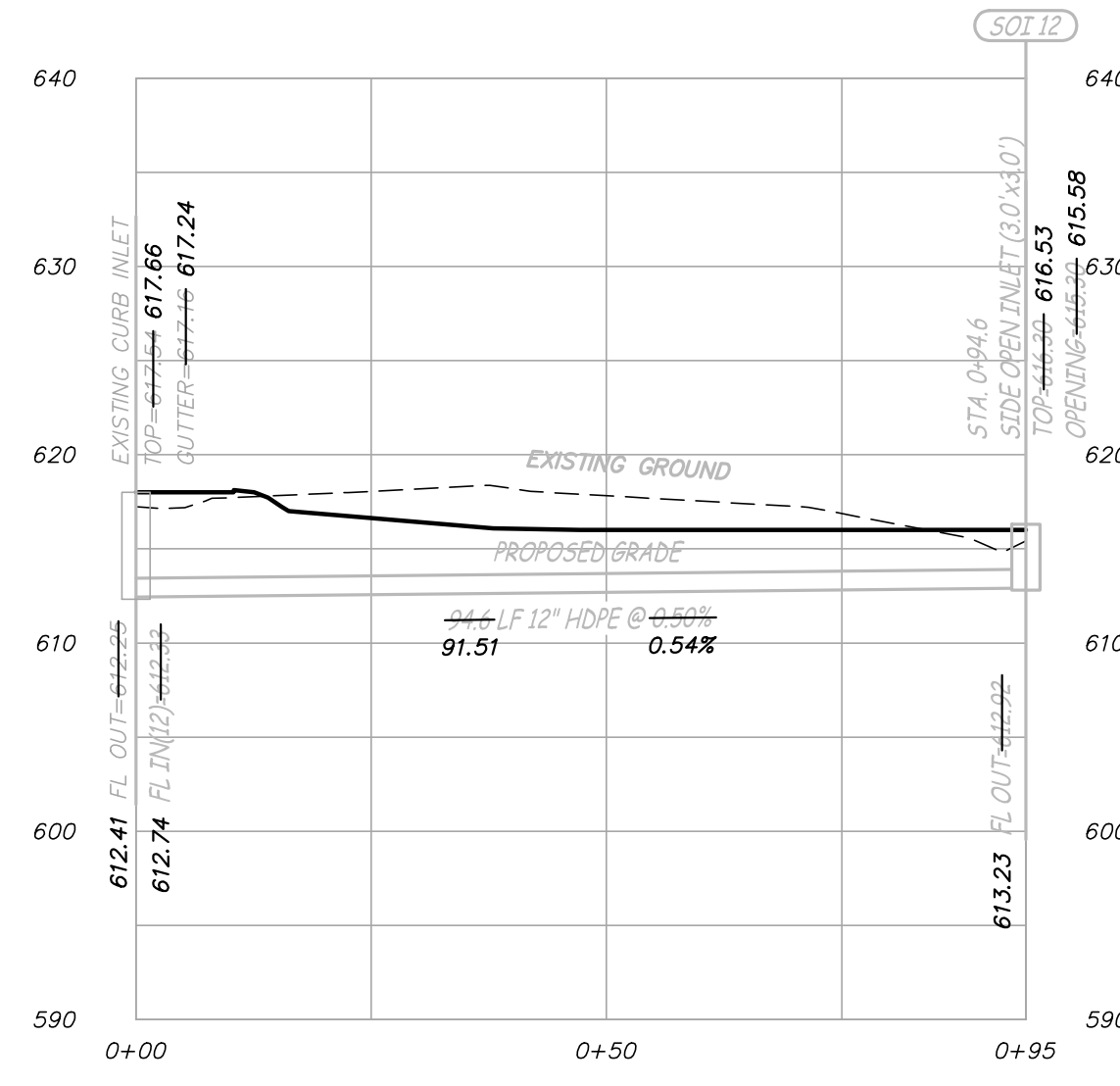


Engineering Surveys and Services
 Consulting Engineers, Scientists, and Land Surveyors
 Analytical and Material Laboratories
 1113 Eng Street, Columbia, Missouri 65201
 572-449-2646 • www.ESSS-llc.com
 Other Offices:
 Jefferson City, Missouri • Sedalia, Missouri
 Missouri Land Surveying Corporation # 204066672

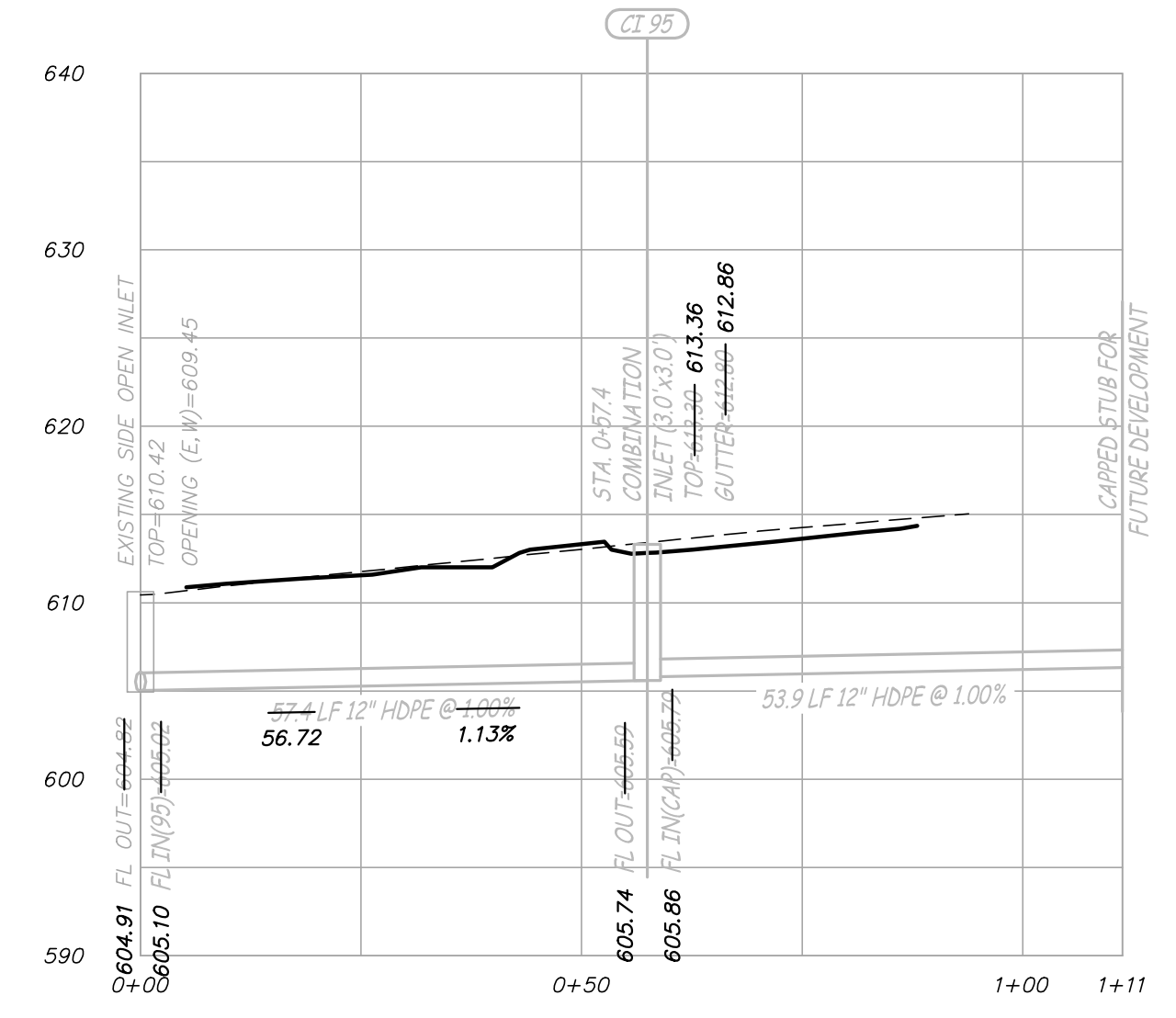
AS - BUILT
HILLMAN PLACE PHASE II
 O'FALLON, ST. CHARLES COUNTY, MISSOURI



PIPE 37 THRU CO 76 (PRIVATE)
 SCALE - HORIZ. 1" = 20'
 VERT. 1" = 10'



EX INLET THRU SOI 12 (PRIVATE)
 SCALE - HORIZ. 1" = 20'
 VERT. 1" = 10'



EX SOI THRU CI 95 (PRIVATE)
 SCALE - HORIZ. 1" = 20'
 VERT. 1" = 10'



FREDERICK E. CARROZ III
 PROFESSIONAL LAND SURVEYOR
 PLS - 2008016655

IF ORIGINAL SIGNATURE OR DIGITAL AUTHENTICATION IS NOT PRESENT THIS MEDIA SHOULD NOT BE CONSIDERED A CERTIFIED DOCUMENT.

Date
DECEMBER 1, 2017

Revised

Surveyed: NTL Drawn: RTM

STORM SEWER AS-BUILT

Sheet
V1.06

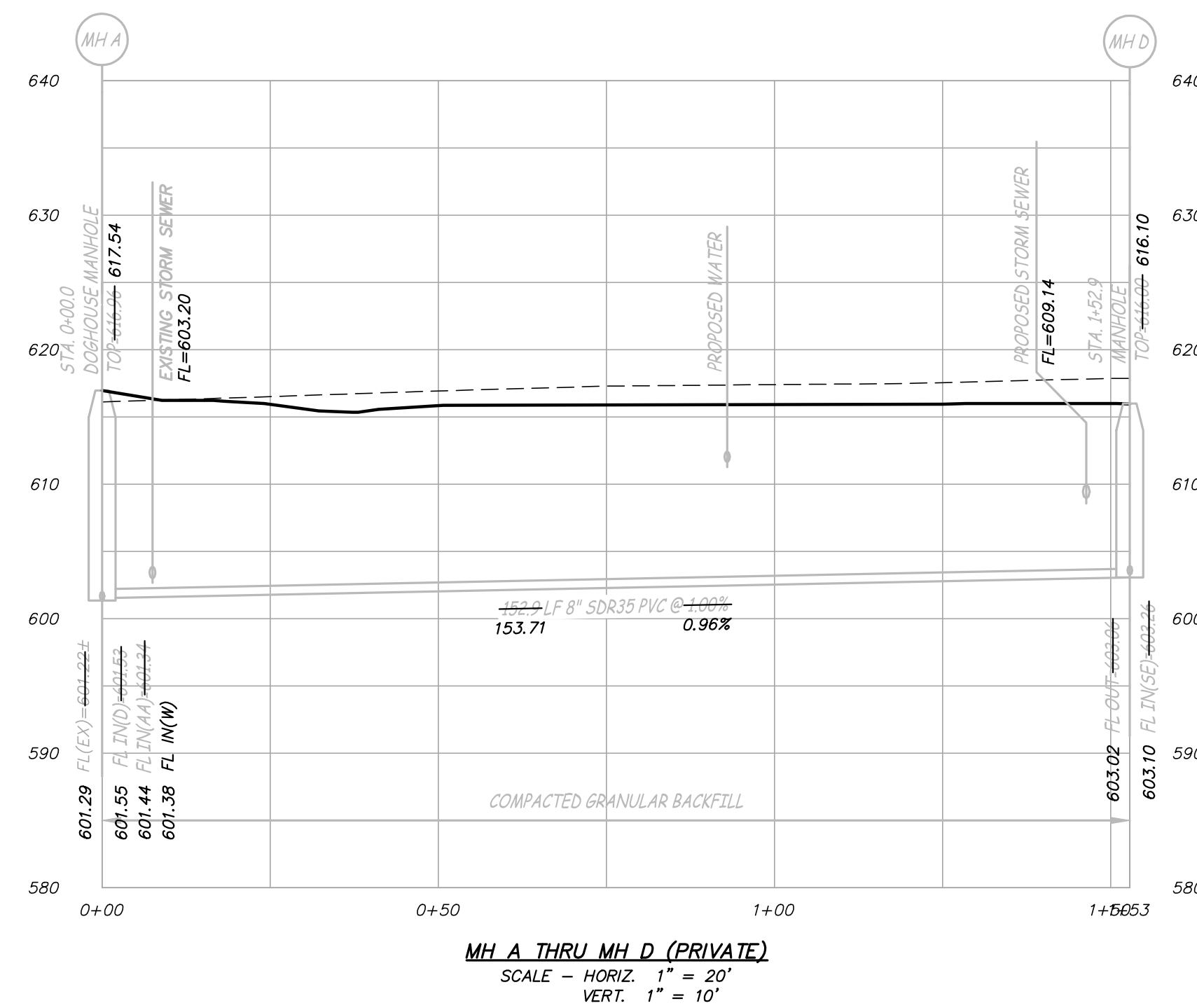
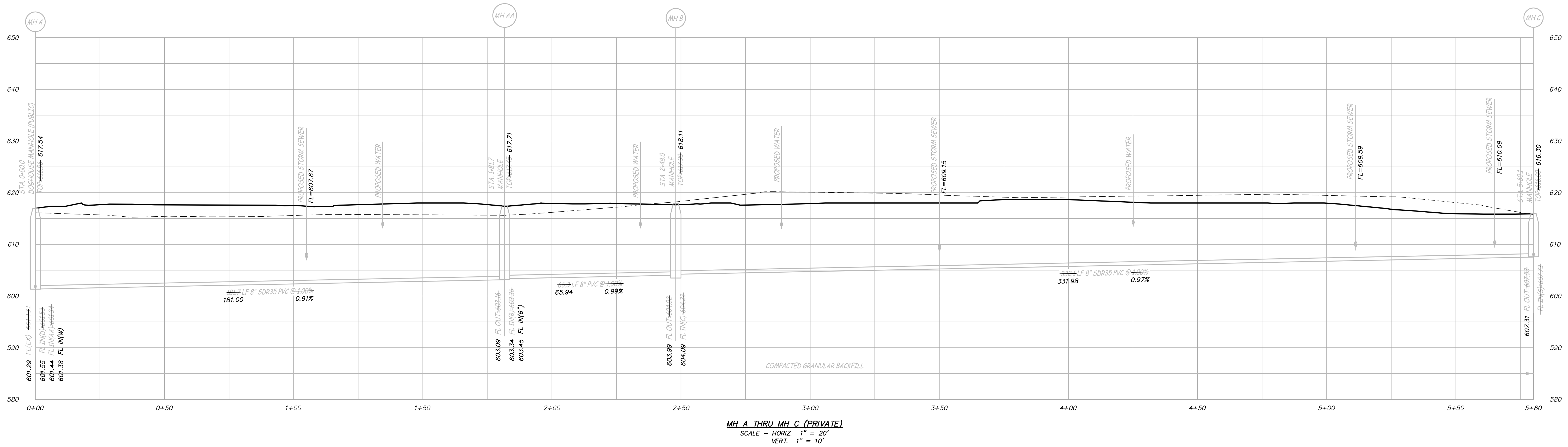
6 OF 8

ES&S PROJECT NO. 13755

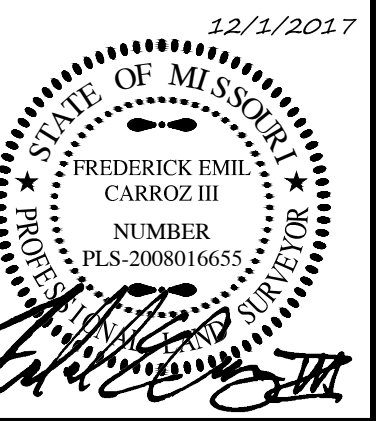


Engineering Surveys and Services
 Consulting Engineers, Scientists, and Land Surveyors
 Analytical and Material Laboratories
 1113 Eng Street, Columbia, Missouri 65201
 572-449-2646 • www.ESSS-llc.com
 Other Offices:
 Jefferson City, Missouri • Sedalia, Missouri
 Missouri Land Surveying Corporation # 204066672

AS-BUILT
HILLMANN PLACE PHASE II
 O'FALLON, ST. CHARLES COUNTY, MISSOURI



F:\CURRENTDRAWINGS\HILLMANN\13754\13754-ALTA.DWG 12/1/2017



FREDERICK E. CARROZ III
 PROFESSIONAL LAND SURVEYOR
 PLS - 2008016655

IF ORIGINAL SIGNATURE OR DIGITAL AUTHENTICATION IS NOT PRESENT THIS MEDIA SHOULD NOT BE CONSIDERED A CERTIFIED DOCUMENT.

Date
DECEMBER 1, 2017

Revised

Surveyed: NTL Drawn: RTM

SANITARY SEWER
AS-BUILT

Sheet

V1.07

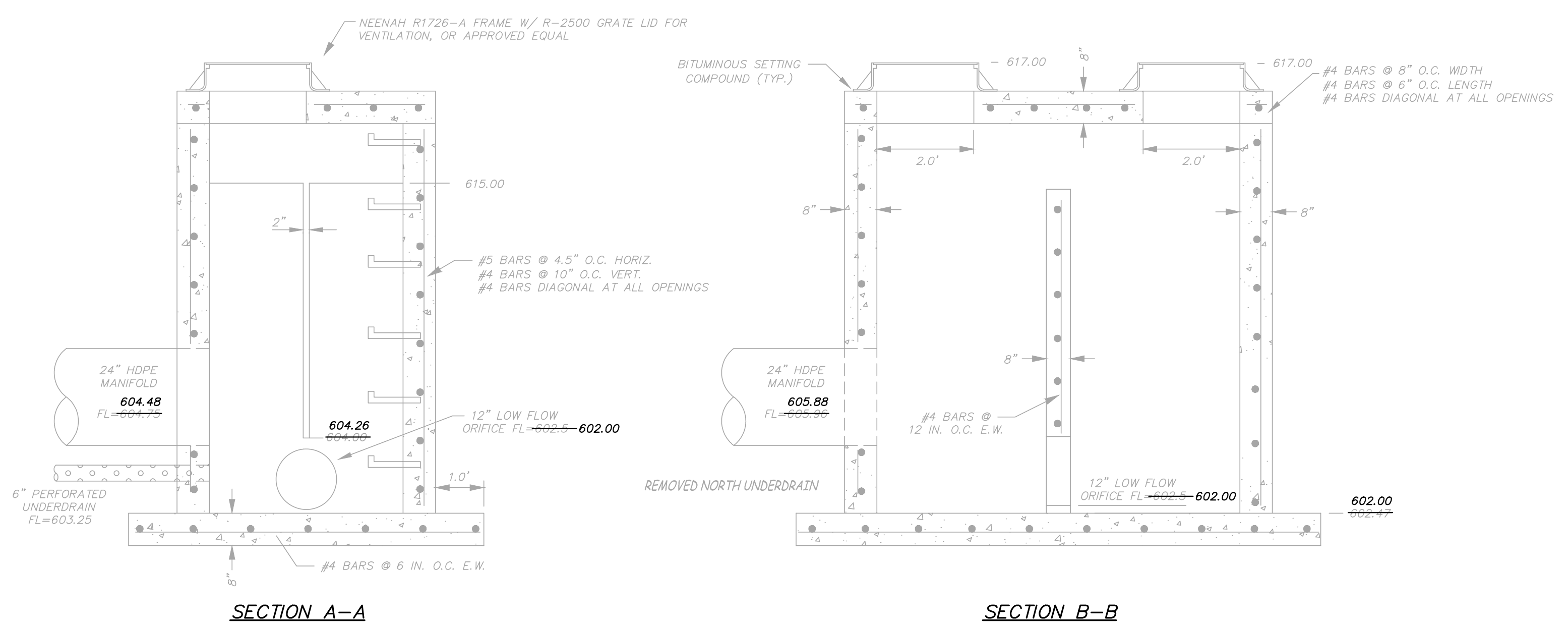
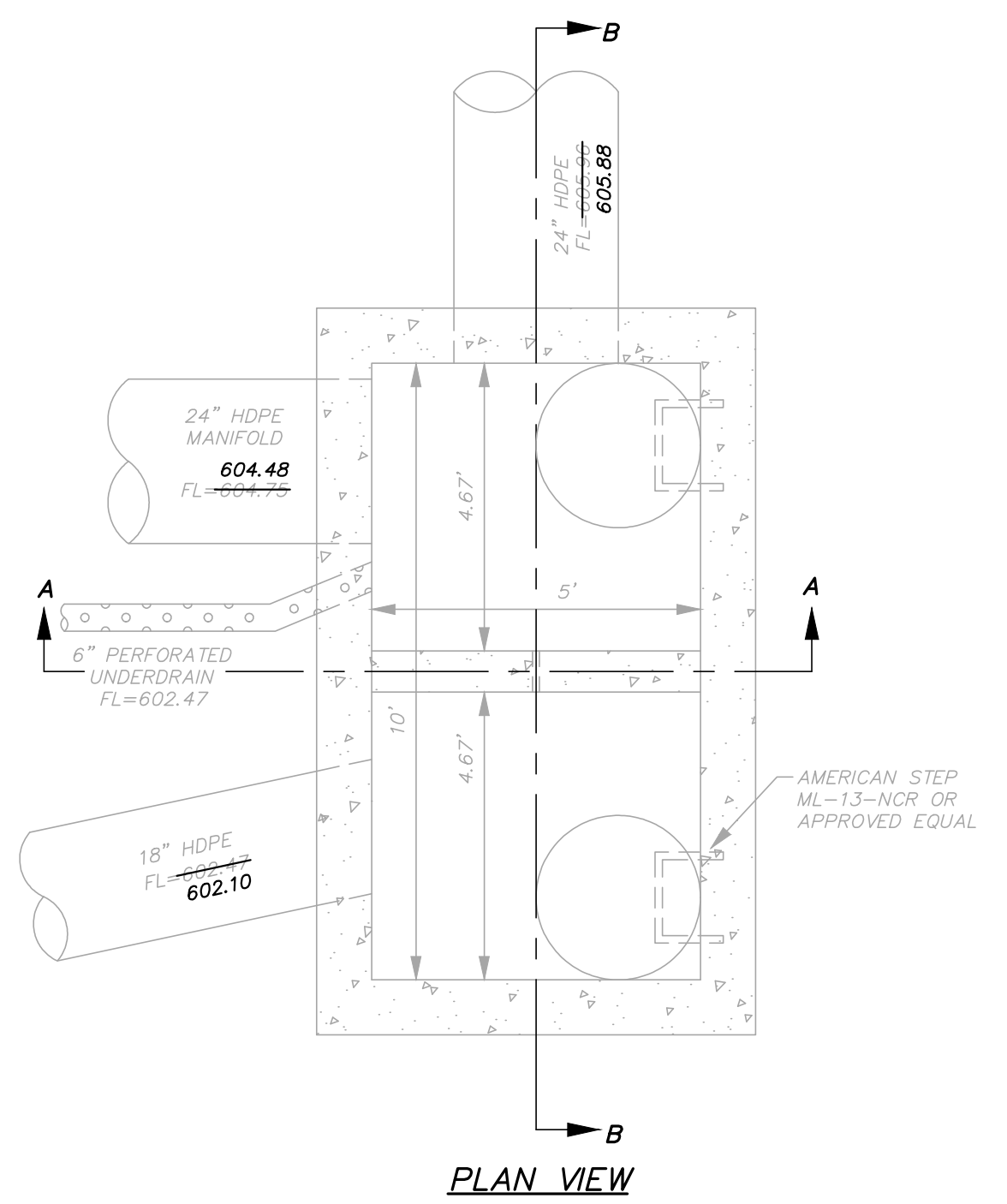
7 OF 8

ES&S PROJECT NO. 13755



Engineering Surveys and Services
 Consulting Engineers, Scientists, and Land Surveyors
 Analytical and Material Laboratories
 1113 Eng Street, Columbia, Missouri 65201
 573-449-2646 • www.ESSS-llc.com
 Other Offices:
 Jefferson City, Missouri • Sedalia, Missouri
 Missouri Land Surveying Corporation # 200406672

AS-BUILT
HILLMANN PLACE PHASE II
 OF FALLON, ST. CHARLES COUNTY, MISSOURI



OCS 1
 NOT TO SCALE

F:\CURRENTDRAWINGS\HILLMANN\13754\13754-ALTA.DWG 12/1/2017



FREDERICK E. CARROZ III
 PROFESSIONAL LAND SURVEYOR
 PLS - 2008016655

IF ORIGINAL SIGNATURE OR DIGITAL AUTHENTICATION IS NOT PRESENT THIS MEDIA SHOULD NOT BE CONSIDERED A CERTIFIED DOCUMENT.

Date
 DECEMBER 1, 2017

Revised

Surveyed: NTL Drawn: RTM

OUTFALL STRUCTURE
 AS-BUILT

Sheet
 V1.08

8 OF 8

ES&S PROJECT NO. 13755