

HILTON AT WINGHAVEN



VOLZ

The existing sewer lengths, sizes, flowlines, depths of structures and sewers and locations with respect to existing or proposed easements have been measured. The results of those measurements are shown on this set of Final Measurement Plans. Since the wye locations have been plotted from information provided by the sewer contractor or other sources, I disclaim any responsibility for that specific information.

All public sewers are located within designated existing or proposed easements except as shown in this drawing.

The results of those measurements are shown on this drawing by lining out the planned number and indicating the measured number adjacent to the planned number. All other numbers shown have not been measured or verified.

The location of the sewers were determined by locating the manholes and traversing in a straight line between them.

No hydraulic computations have been done on the measured lines to verify or confirm the capacity, freeboard or design requirements of the sewers.

Roger G. Allen
 Roger G. Allen
 Mo. Reg. L.S. 2185



McEAGLE
 DEVELOPMENT,
 L.L.C.
 689 CRAIG ROAD
 ST. LOUIS, MO 63141
 314-432-4320

10849 Indian Head Industrial Blvd.
 St. Louis, Missouri 63132-1166
 FAX (314)890-1250
 (314)426-6272

Engineers
 Land Planners
 Land Surveyors

VOLZ

HILTON AT WINGHAVEN

FINAL SEWER
 MEASUREMENTS

Design By: JAF
 Drawn By: JRS
 Checked By: JAF

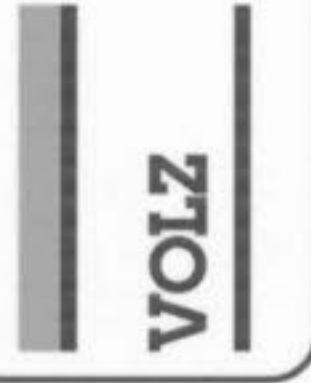
BB930-22



Scale in Feet
1" = 30'



MCEAGLE
DEVELOPMENT,
L.L.C.

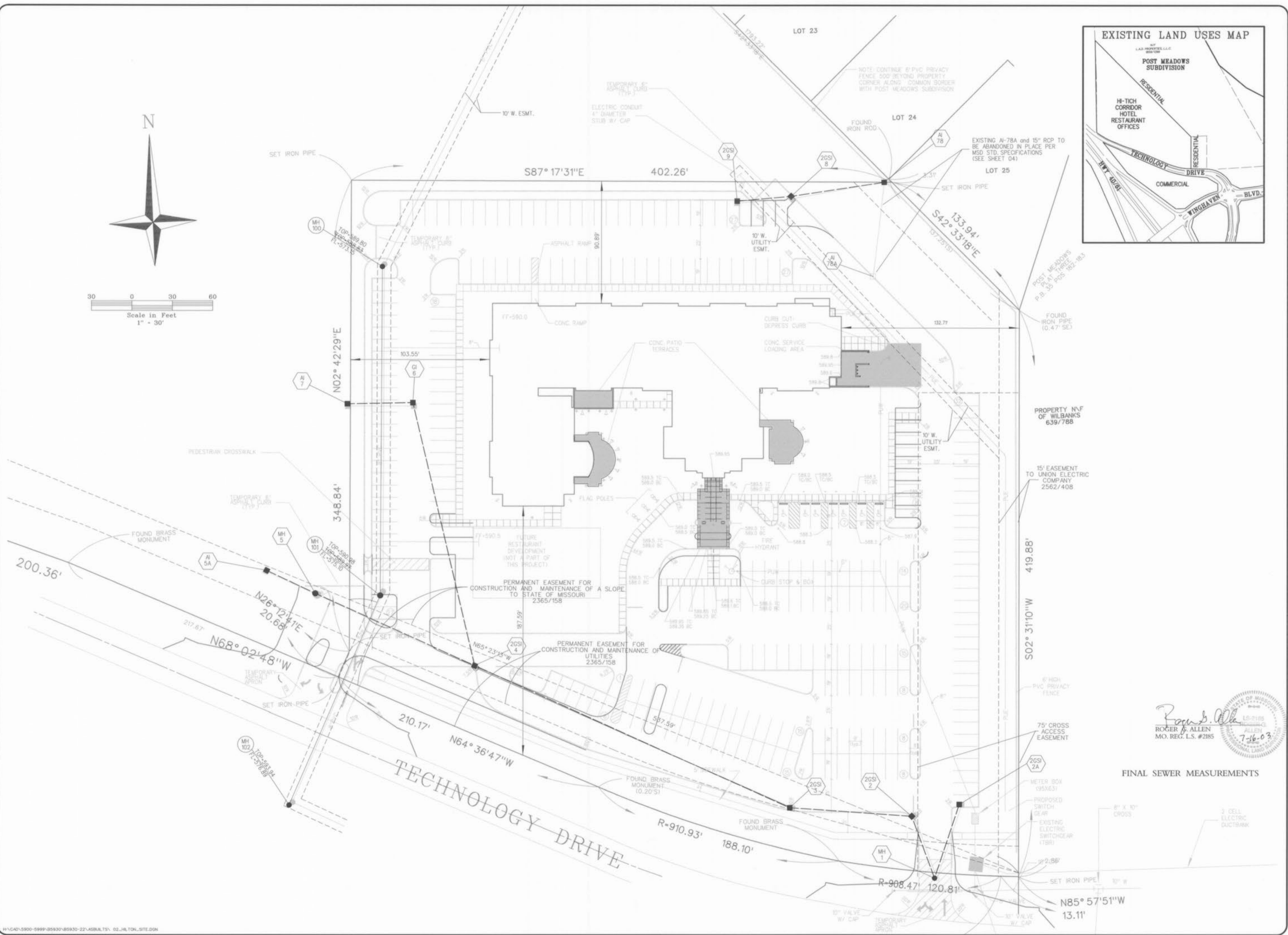


889 CRAIG ROAD
ST. LOUIS, MO 63141
314-432-4920

HILTON AT WINGHAVEN



FINAL SEWER MEASUREMENTS



H:\CAD\5900-9999\85930-22\ASB\LS\ 02_HILTON_SITE.DGN

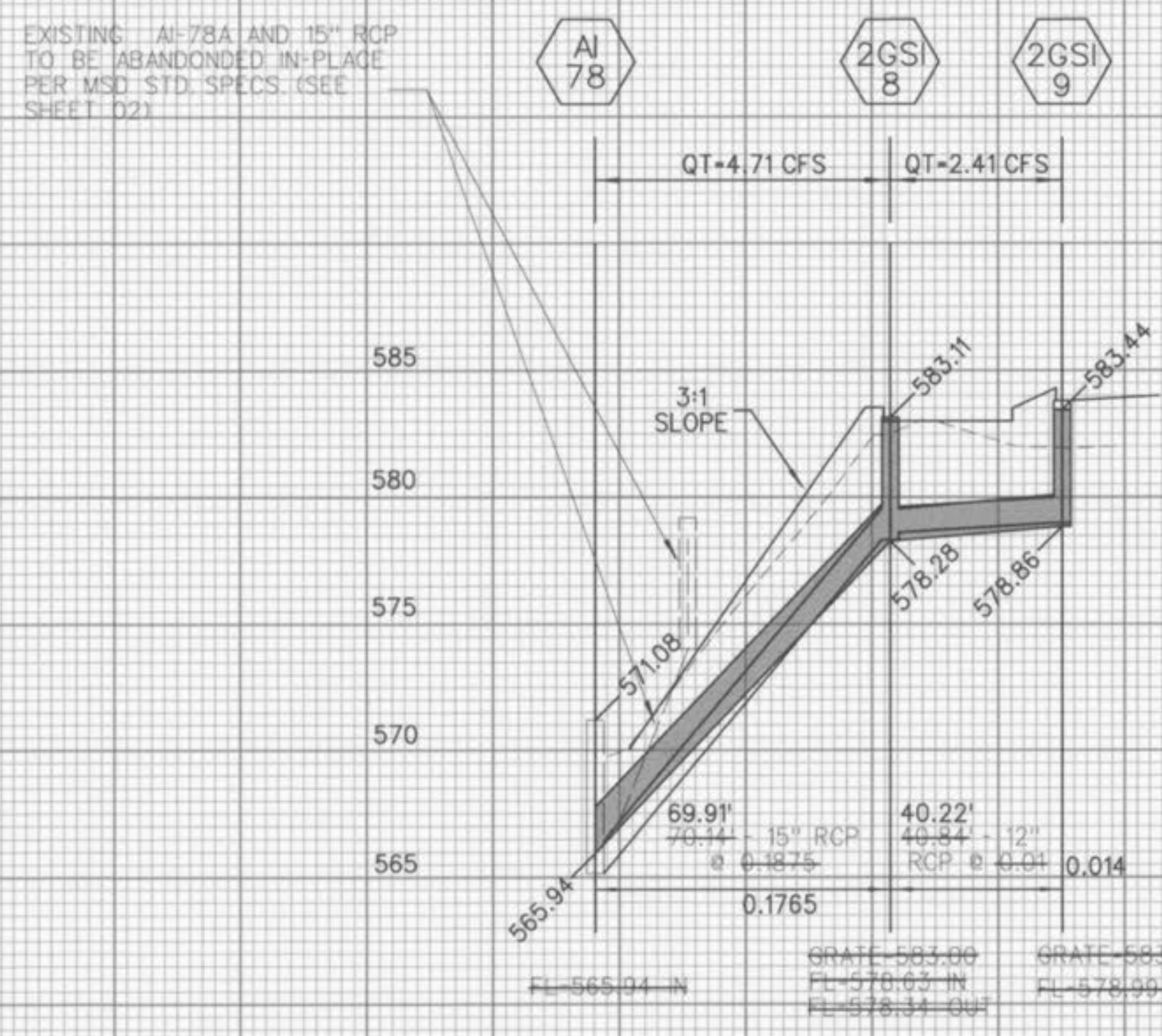
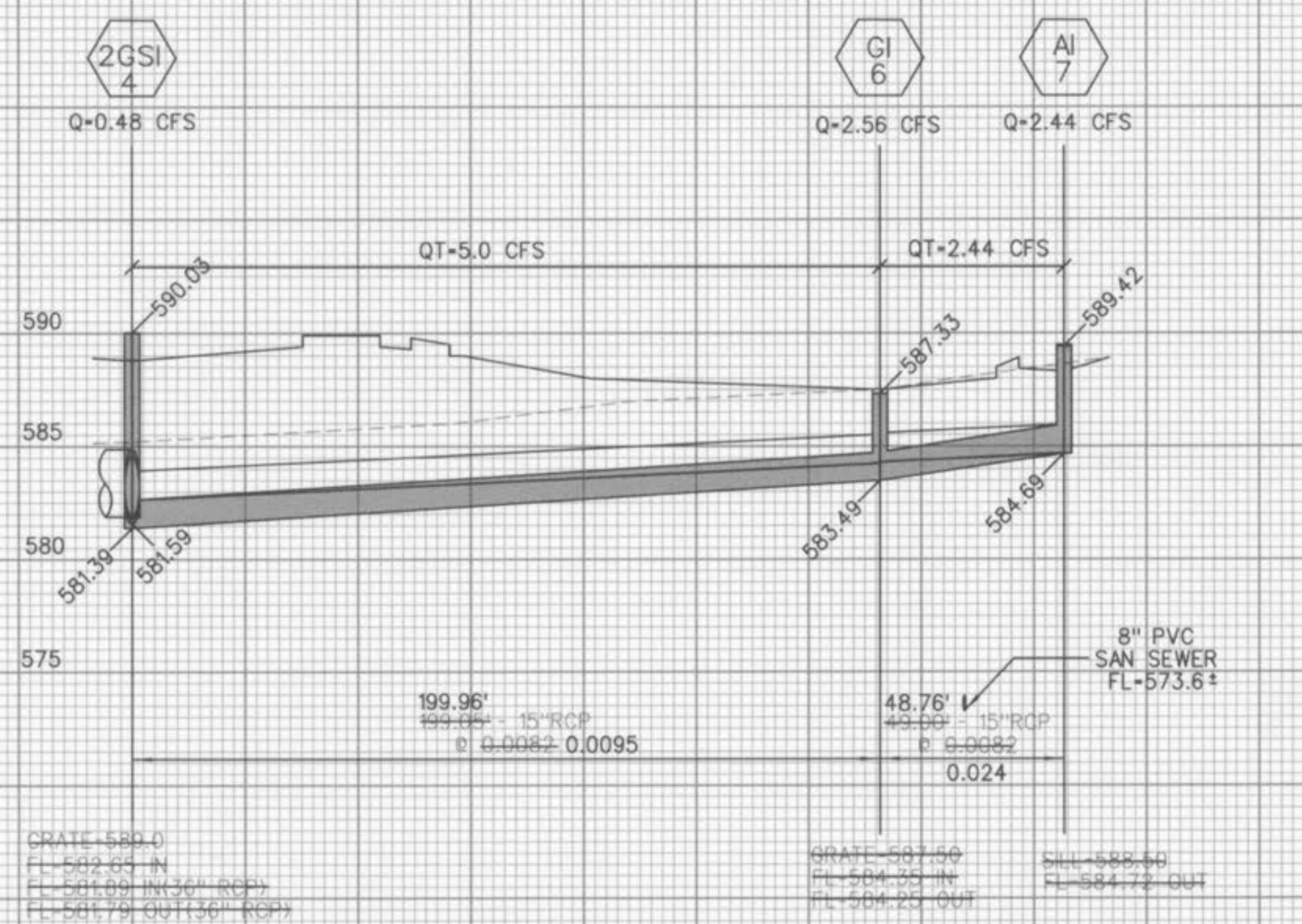
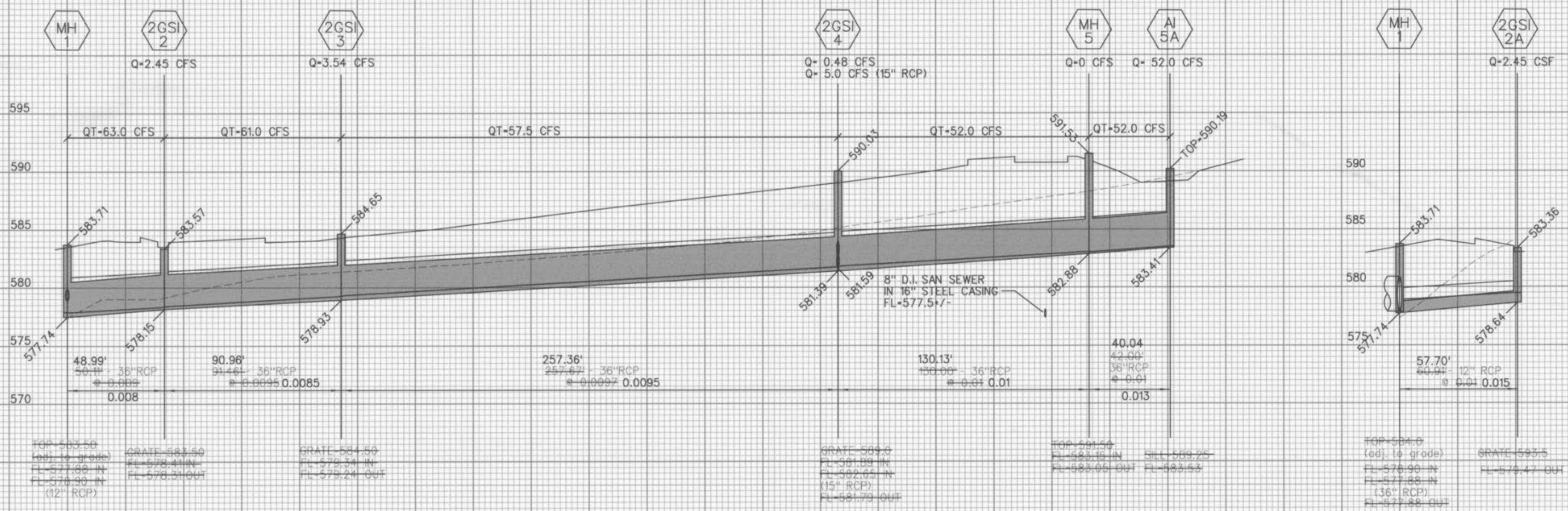
SITE PLAN	Design By: JAF	85930-22
	Drawn By: JRS	
	Checked By: JAF	
	7-01-12	
	02	

Hilton @ Winghaven



HILTON AT WINGHAVEN

STORM SEWER PROFILES
Design By: JMF
Drawn By: JMS
Checked By: JMF
B-5930-22
7-16-03
04



ROGER CALLEN
MO. REG. L.S. #2185
7-16-03

FINAL SEWER MEASUREMENTS