



HOFF INDUSTRIAL DRIVE
(60' WIDE PRIVATE)

PROPERTY N/F
TRACY AND MARY JO
EVERHART
2375/363
ZONE 1-2

LOT 4
"HOFF INDUSTRIAL PARK"
P.B. 40 PGS. 155-156

PROPERTY N/F
SUSAN WEISSINGER
AND STEVE WEISSINGER
4032/2284

LOT 5
"HOFF INDUSTRIAL PARK"
P.B. 40 PGS. 155-156
ZONE 1-2

LOT 6
"HOFF INDUSTRIAL PARK"
P.B. 40 PGS. 155-156
ZONE 1-2

PROPERTY N/F
SUSAN WEISSINGER
AND STEVE WEISSINGER
4032/1308
ZONE 1-2

LOT 10
"HOFF INDUSTRIAL PARK"
P.B. 40 PGS. 155-156

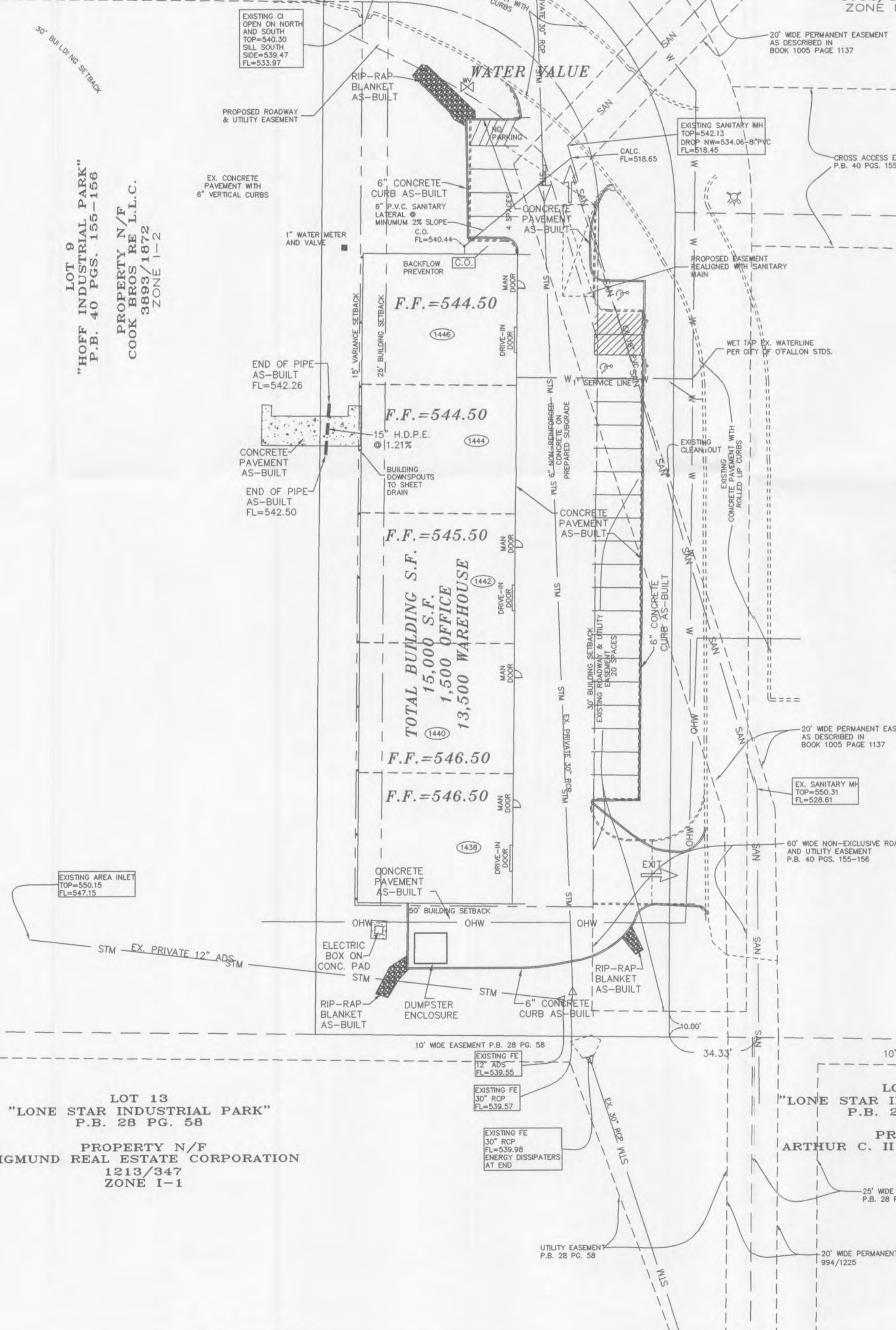
LOT 9
"HOFF INDUSTRIAL PARK"
P.B. 40 PGS. 155-156
PROPERTY N/F
COOK BROS REAL ESTATE L.L.C.
P.B. 40 PGS. 155-156
ZONE 1-2

LOT 7
"HOFF INDUSTRIAL PARK"
P.B. 40 PGS. 155-156
AREA=1.29 ACRES
PROPERTY N/F
SUSAN AND STEVE WEISSINGER AND
TRACY AND MARY JO EVERHART
ZONE 1-2

LOT 13
"LONE STAR INDUSTRIAL PARK"
P.B. 28 PG. 58
PROPERTY N/F
SIGMUND REAL ESTATE CORPORATION
1213/347
ZONE 1-1

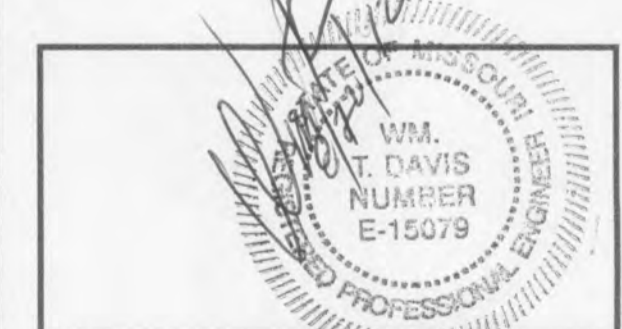
LOT 12
"LONE STAR INDUSTRIAL PARK"
P.B. 28 PG. 58

PROPERTY N/F
ARTHUR C. II AND JAN M. GIESSMAN
1628/245
ZONE 1-1



CITY OF O'FALLON
COMMUNITY DEVELOPMENT DEPARTMENT
ACCEPTED FOR CONSTRUCTION
BY: [Signature] DATE: 9-4-12
INDICATES RESPONSIBILITY FOR DESIGN

BILL DAVIS INC
2209 DROSTE ROAD
ST. CHARLES, MO. 63301



LOT 8 - HOFF IND.
O'FALLON, MO. 63366
PER CITY OF O'FALLON
INSPECTION REPORT
8/14/09

Project	Sheet
Date JUNE 20, 2012	
Scale	

Lot 8 Hoff Industrial Drive
1438 - 1446 Hoff Industrial Drive
O'Fallon, Mo 63366

RECEIVED
AUG 28 2012
BY: [Signature]