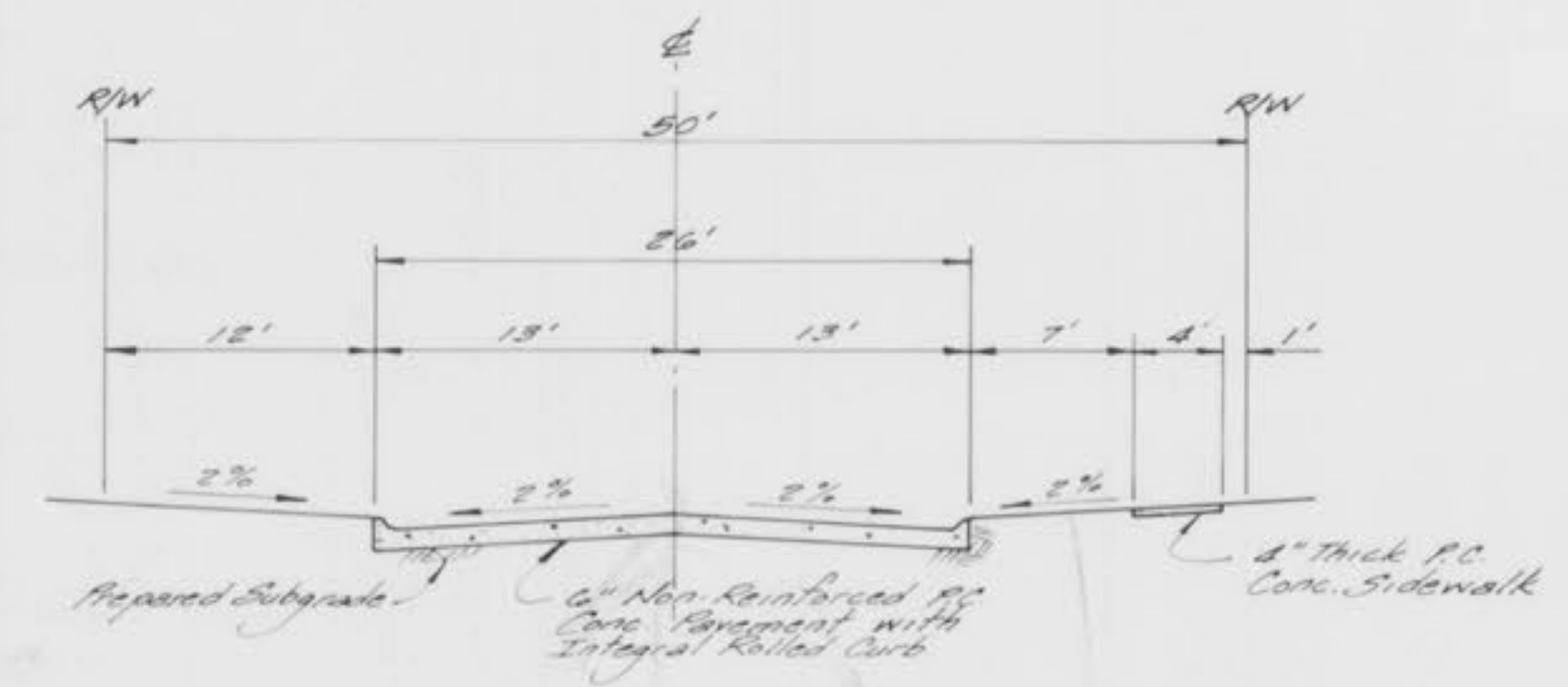
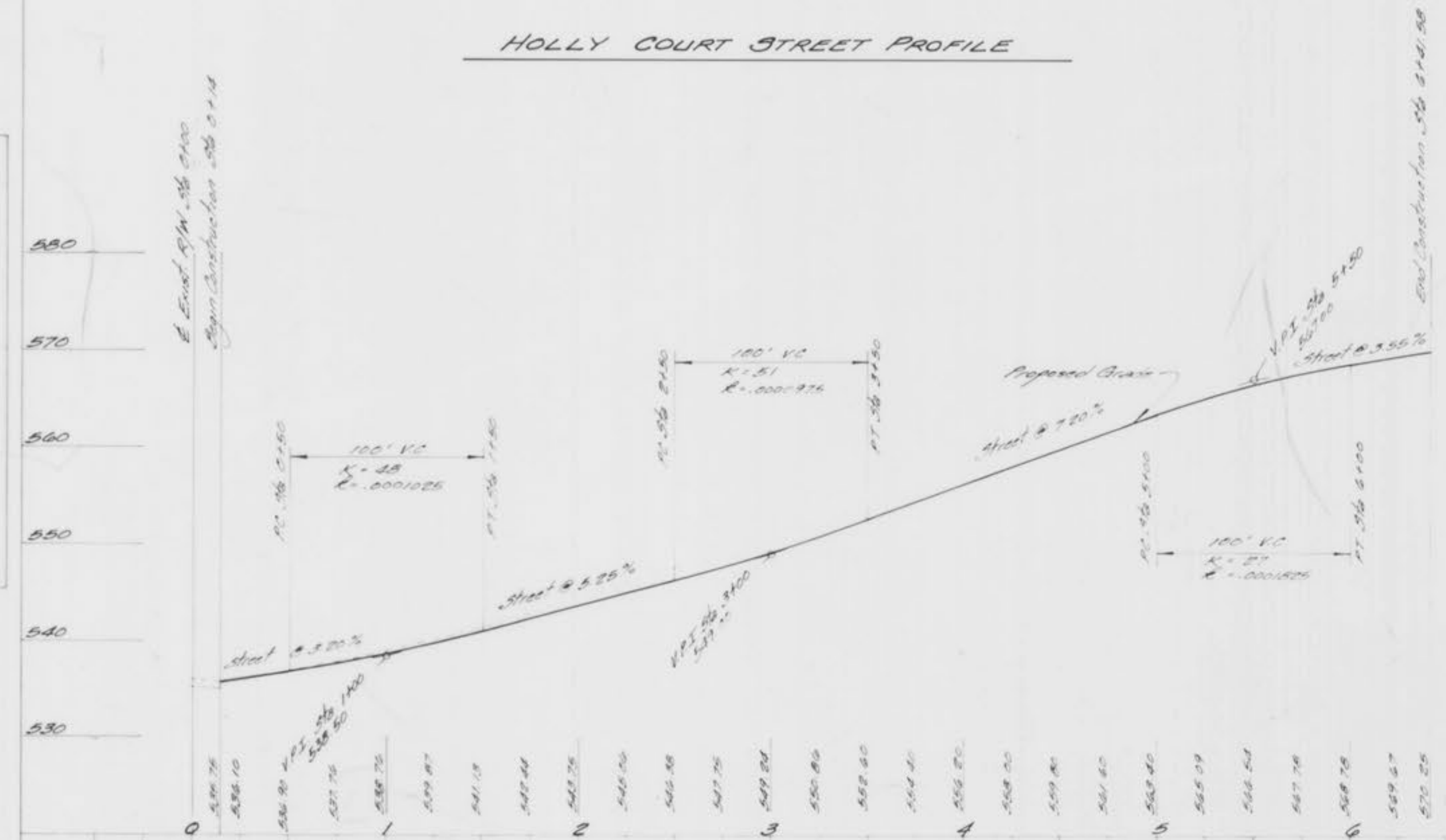






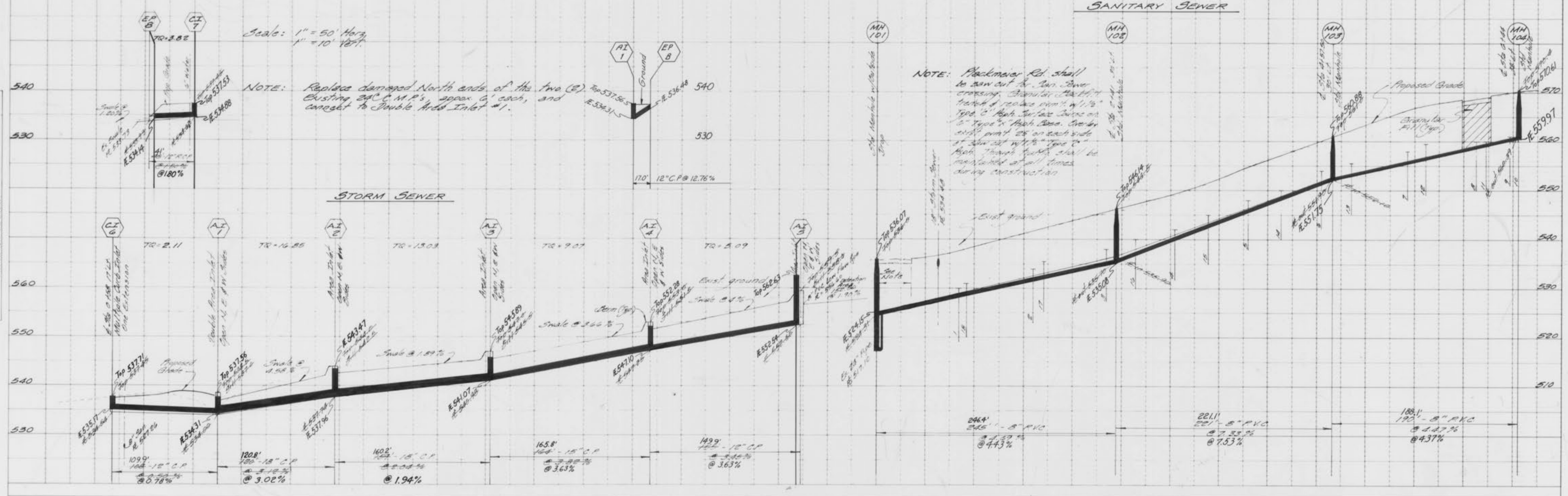
**HOLLY COURT STREET PROFILE**



**BAX ENGINEERING CO., INC.**  
 530 Madison Street St. Charles, MO. 63301  
 946-6588 724-3330  
 Date: March 6, 1985 Order No.: 85-1759

**PLAN**  
 DRAWN BY: [blank]  
 CHECKED BY: [blank]  
 DATE: [blank]

**PROFILE**  
 DRAWN BY: [blank]  
 CHECKED BY: [blank]  
 DATE: [blank]



NOTE: Packman Rd. shall be saw cut to San. Sewer crossing. Regular street traffic & reduce to 1/2" Type C Ribs. For San. Sewer on 1/2" Type C Ribs. One by one, put 2" on each side of street with 1/2" Type C Ribs. Traffic shall be maintained at all times during construction.

NOTE: Replace damaged North ends of the two (2) existing 24" C.M.P.'s approx. 6' each, and connect to Double Arch Inlet #1.

"AS-BUILTS" ADDED 3-4-86  
 Rev. 3/24/86

Blueprint Cut Line for City of O'Fallon