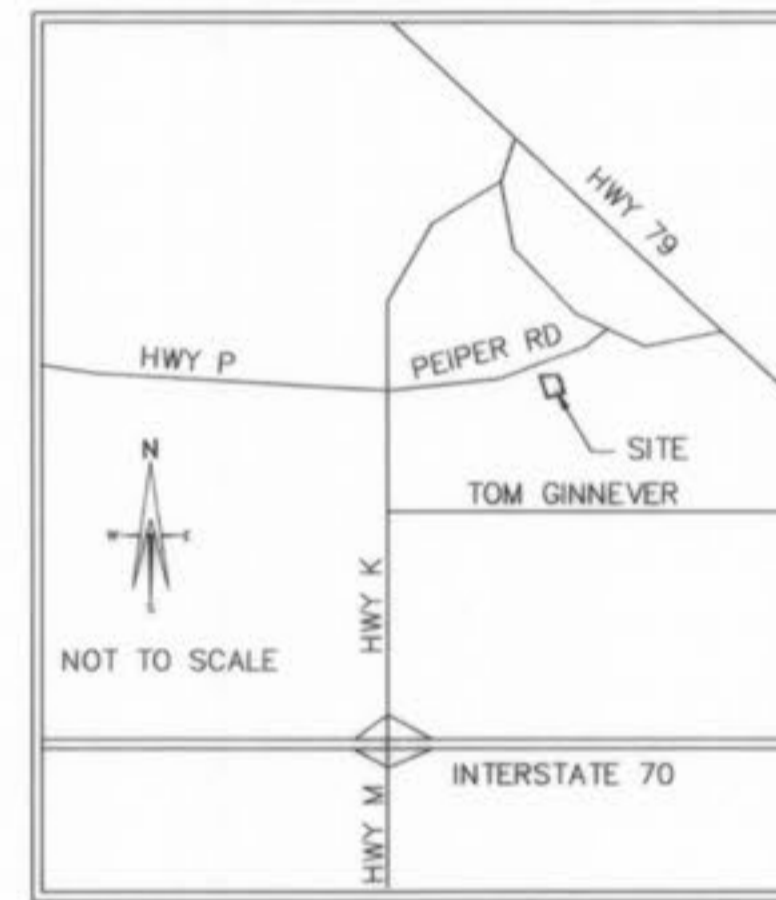


# WATER AS-BUILTS FOR HOMEFIELD SQUARE - VILLAGE P

A TRACT OF LAND BEING PART OF  
FRACTIONAL SECTION 16, TOWNSHIP 47 NORTH,  
RANGE 3 EAST OF THE FIFTH PRINCIPAL MERIDIAN,  
CITY OF O'FALLON, ST. CHARLES COUNTY, MISSOURI



LOCATION MAP

## DEVELOPMENT NOTES

- 1. AREA OF TRACT 12.23 ACRES
- 2. SITE SERVED BY:

CITY OF O'FALLON SEWER DISTRICT  
AMERENUE ELECTRIC COMPANY  
ST. CHARLES GAS COMPANY  
CITY OF O'FALLON WATER  
VERISON TELEPHONE COMPANY  
FORT ZUMWALT SCHOOL DISTRICT  
O'FALLON FIRE PROTECTION DISTRICT

## SHEET INDEX

COVER SHEET	1
FLAT PLAN	2

PREPARED FOR:

T.R. HUGHES INC.  
239 FOX HILL ROAD  
ST. CHARLES, MO. 63301

THE EXISTING FIRE HYDRANTS AND VALVES LOCATIONS WITH RESPECT TO EXISTING OR PROPOSED EASEMENTS HAVE BEEN MEASURED. THE RESULTS OF THOSE MEASUREMENTS ARE SHOWN ON THIS SET OF AS-BUILT PLANS.

ST. CHARLES ENGINEERING AND SURVEYING, INC.

### ENGINEERS AUTHENTICATION

The responsibility for professional engineering liability on this project is hereby limited to the set of plans authenticated by the seal, signature, and date hereunder attached. responsibility is disclaimed for all other engineering plans involved in the project and specifically excludes revisions after this date unless re-authenticated.

*Michael Newell Meiners* 9/9/03  
MICHAEL NEWELL MEINERS  
MISSOURI PROFESSIONAL ENGINEER NUMBER E-22483

HOMEFIELD SQUARE  
VILLAGE P  
WATER  
AS-BUILTS

ST. CHARLES ENGINEERING & SURVEYING, INC.  
801 S. FIFTH STREET, SUITE 202  
ST. CHARLES, MO 63301  
TEL: (636) 947-0607 FAX: (636) 947-2448

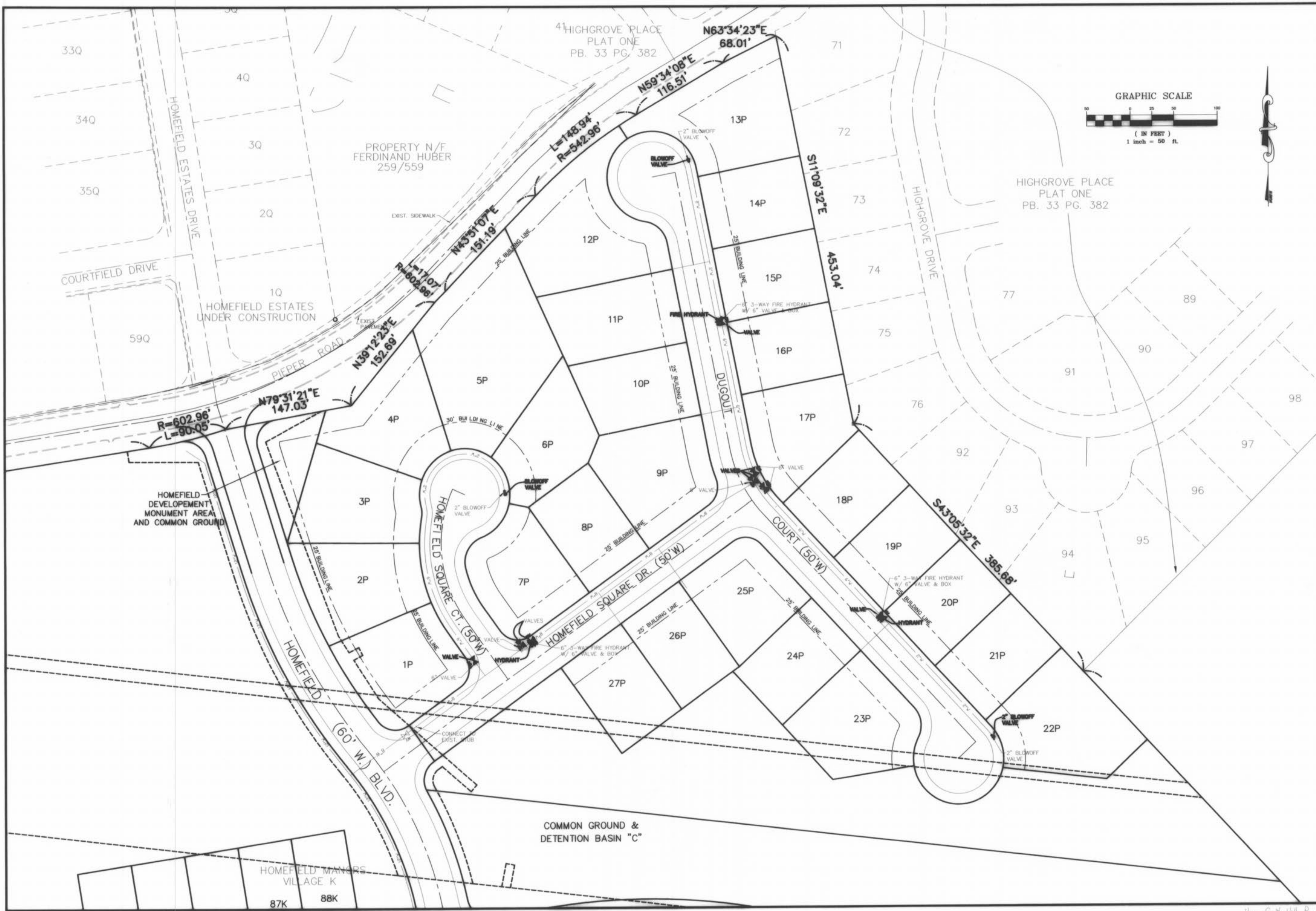
S  
C  
E  
S



ORDER NO.  
09-1153  
DATE  
09/08/03

1

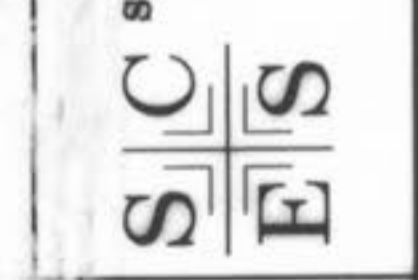
Homefield Village P App 5/11/03 MNC  
Homefield Square Village P Water As-Built



JESSICA BLANDHORN

HOMEFIELD SQUARE  
 VILLAGE P  
 WATER  
 AS-BUILTS

ST. CHARLES ENGINEERING & SURVEYING, INC.  
 801 S. FIFTH STREET, SUITE 202  
 ST. CHARLES, MO 63301  
 TEL: (636) 947-0607 FAX: (636) 947-2448



ORDER NO.	08-1153
DATE	09/08/08
	1

Homefield Vill P App 5/10/08 ASB  
 Homefield Square Village P Water As-Built