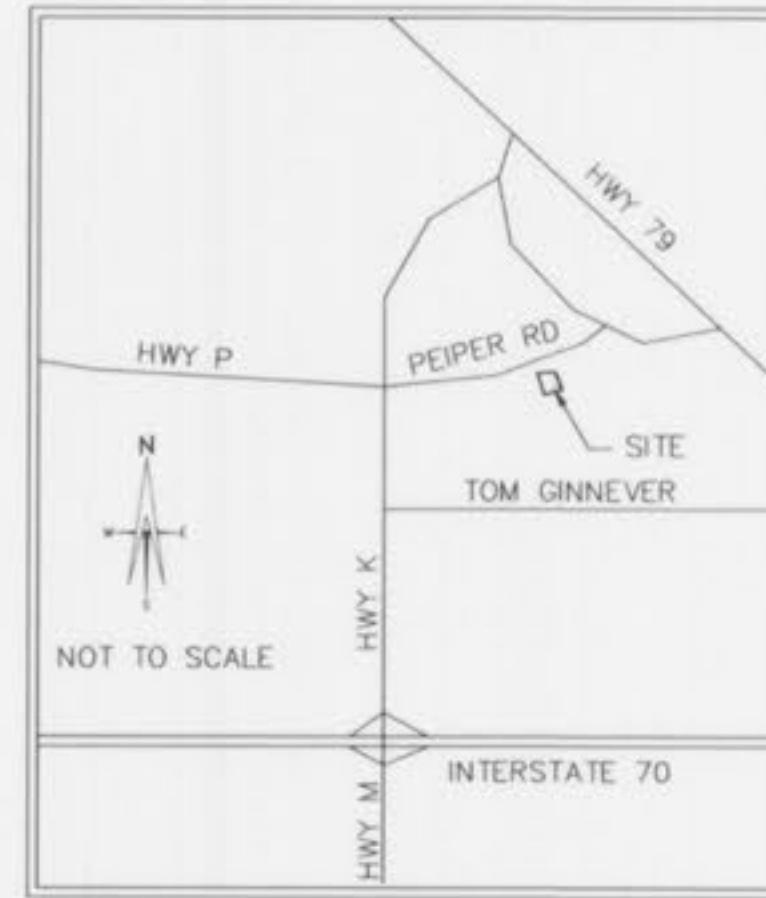


# WATER, STORM AND SANITARY SEWER AS-BUILTS FOR HOMEFIELD MANORS PLAT THREE

A TRACT OF LAND BEING PART OF  
FRACTIONAL SECTION 16, TOWNSHIP 47 NORTH,  
RANGE 3 EAST OF THE FIFTH PRINCIPAL MERIDIAN,  
CITY OF O'FALLON, ST. CHARLES COUNTY, MISSOURI



LOCATION MAP

## DEVELOPMENT NOTES

1. AREA OF TRACT 23.6 ACRES
2. SITE SERVED BY:
  - CITY OF O'FALLON SEWER DISTRICT
  - AMERENUE ELECTRIC COMPANY
  - ST. CHARLES GAS COMPANY
  - CITY OF O'FALLON WATER
  - VERISON TELEPHONE COMPANY
  - FORT ZUMWALT SCHOOL DISTRICT
  - O'FALLON FIRE PROTECTION DISTRICT

## BENCHMARK

U.S.G.S.  
Chiseled L on concrete hub rail at southwest corner of State Hwy  
79 bridge over Peruque Creek.  
Elev = 458.14

SITE  
Top of existing sanitary manhole #8 behind Lot 17k.  
Elev. = 504.77

## ENGINEERS AUTHENTICATION

The responsibility for professional engineering liability on this project is hereby limited to the set of plans authenticated by the seal, signature, and date hereunder attached. responsibility is disclaimed for all other engineering plans involved in the project and specifically excludes revisions after this date unless re-authenticated.

## SHEET INDEX

|                         |   |
|-------------------------|---|
| COVER SHEET             | 1 |
| FLAT PLAN               | 2 |
| SANITARY SEWER PROFILES | 3 |
| STORM SEWER PROFILES    | 4 |

## PREPARED FOR:

T.R. HUGHES INC.  
239 FOX HILL ROAD  
ST. CHARLES, MO. 63301

THE EXISTING SEWER LENGTHS, SIZES, FLOWLINES, DEPTHS OF STRUCTURES AND SEWERS AND LOCATIONS WITH RESPECT TO EXISTING OR PROPOSED EASEMENTS HAVE BEEN MEASURED. THE RESULTS OF THOSE MEASUREMENTS ARE SHOWN ON THIS SET OF AS-BUILT PLANS. UPON INSPECTION OF ALL STRUCTURE, THERE IS AT LEAST A 0.2 FOOT DROP BETWEEN THE FLOW LINE IN AND FLOW LINE OUT OF ALL AS BUILT STRUCTURES ON THIS SET OF PLANS. SINCE THE WYE LOCATIONS HAVE BEEN PLOTTED FROM INFORMATION PROVIDED BY THE SEWER CONTRACTOR OR OTHER SOURCES, I DISCLAIM ANY RESPONSIBILITY FOR THAT SPECIFIC INFORMATION.

ST. CHARLES ENGINEERING AND SURVEYING, INC.

*Michael Newell Meiners* 10/22/03  
MICHAEL NEWELL MEINERS  
MISSOURI PROFESSIONAL ENGINEER NUMBER E-22483



HOMEFIELD MANORS  
PLAT THREE  
WATER, SANITARY AND  
STORM SEWER AS-BUILTS

S|C ST. CHARLES ENGINEERING & SURVEYING, INC.  
801 S. FIFTH STREET, SUITE 202  
ST. CHARLES, MO 63301  
TEL: (636) 947-0607 FAX: (636) 947-2448  
E|S

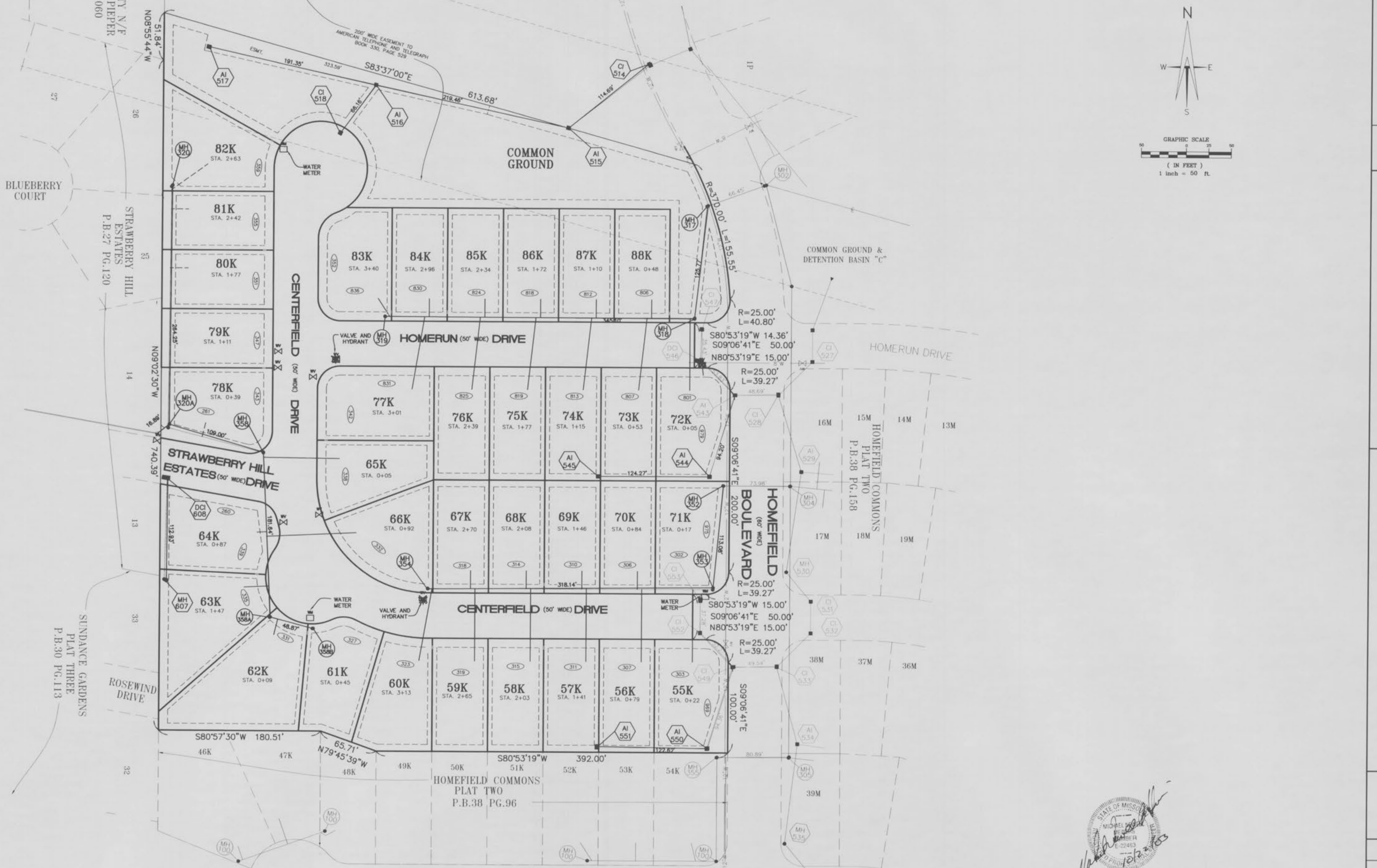
ORDER NO.

01-1250

DATE

05/03/02

1 OF 4



HOMEFIELD MANORS  
PLAT THREE  
WATER, SANITARY AND  
STORM SEWER AS-BUILTS

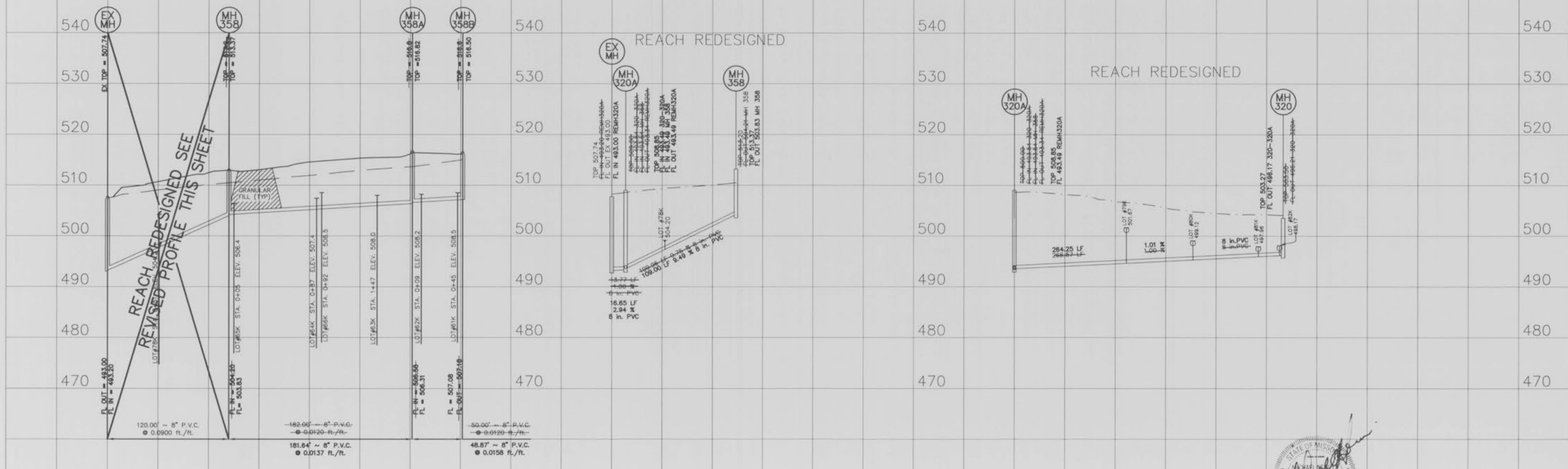
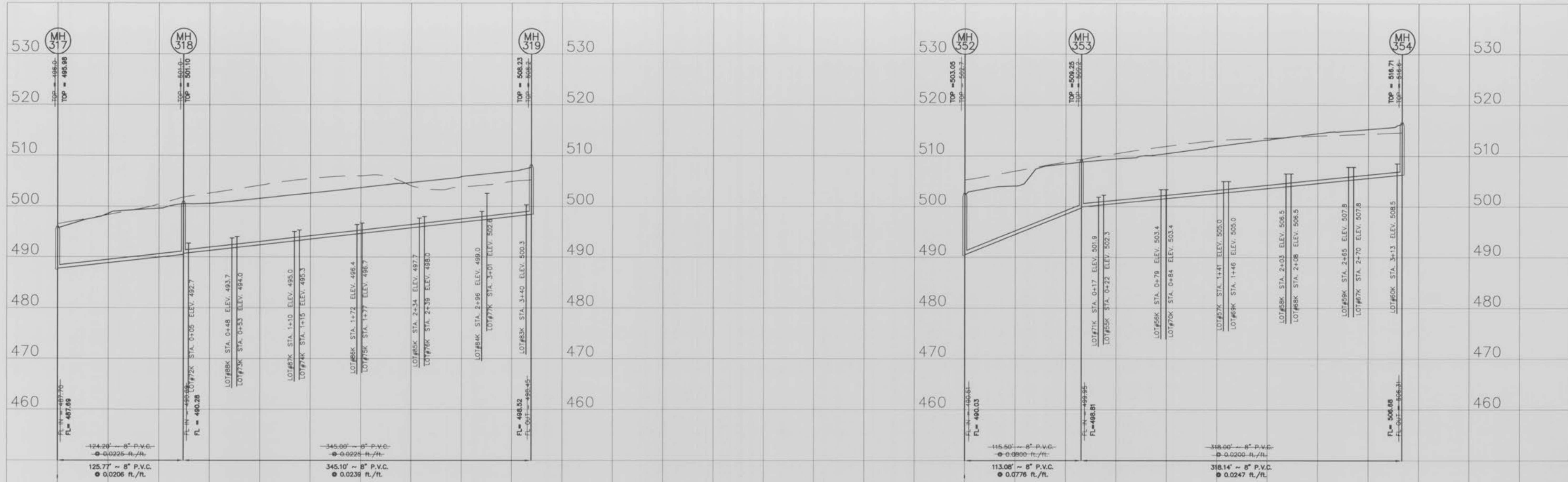
S C ST. CHARLES ENGINEERING & SURVEYING, INC.  
801 S. FIFTH STREET, SUITE 202  
ST. CHARLES, MO 63301  
TEL: (636) 947-0607 FAX: (636) 947-2448

S C E S

ORDER NO.  
01-1280  
DATE  
05/08/02

2 OF 4





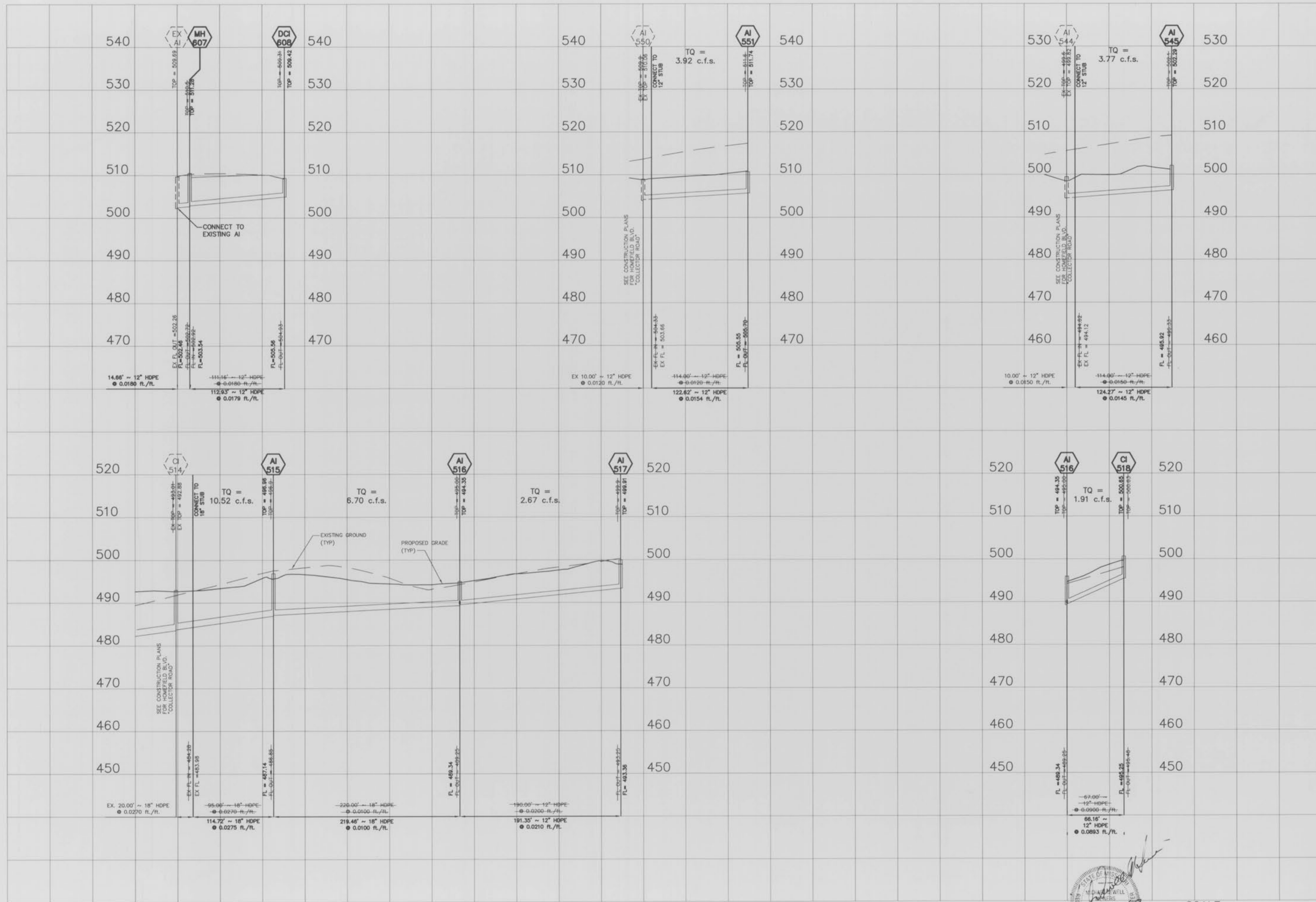
SCALE:  
 1" = 10' VERTICAL  
 1" = 50' HORIZONTAL

HOMEFIELD MANORS  
 PLAT THREE  
 WATER, SANITARY AND  
 STORM SEWER AS-BUILTS

SJC ST. CHARLES ENGINEERING & SURVEYING, INC.  
 801 S. FIFTH STREET, SUITE 202  
 ST. CHARLES, MO 63301  
 TEL: (636) 947-0607 FAX: (636) 947-2448

ORDER NO.  
 01-1280  
 DATE  
 05/03/02

3 OF 4



SCALE:  
 1" = 10' VERTICAL  
 1" = 50' HORIZONTAL

HOMEFIELD MANORS  
 PLAT THREE  
 WATER, SANITARY AND  
 STORM SEWER AS-BUILTS

SIC ST. CHARLES ENGINEERING & SURVEYING, INC.  
 801 S. FIFTH STREET, SUITE 202  
 ST. CHARLES, MO 63301  
 TEL: (636) 947-0607 FAX: (636) 947-2448

ORDER NO.  
 01-1280  
 DATE  
 05/03/02  
 4 OF 4