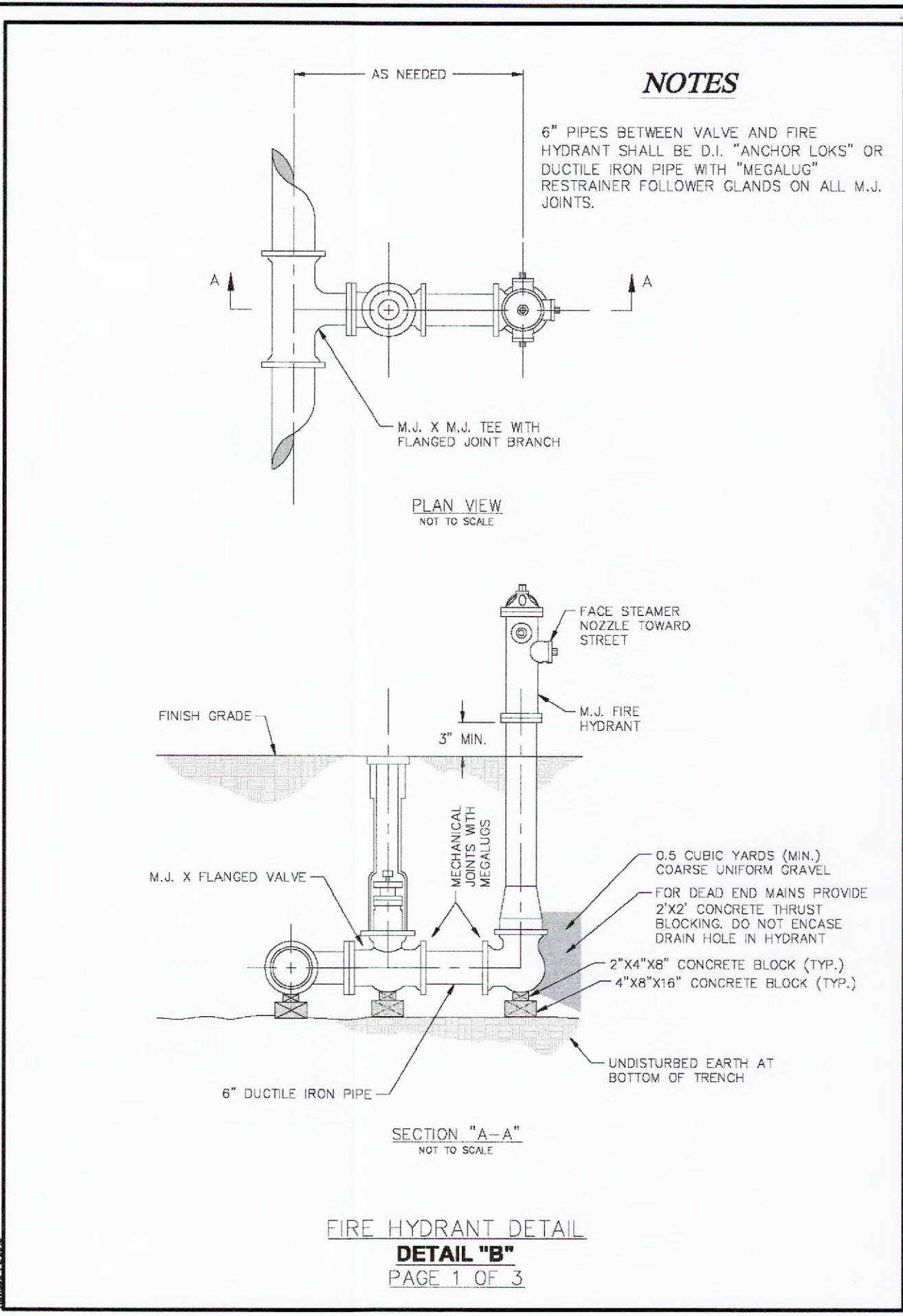
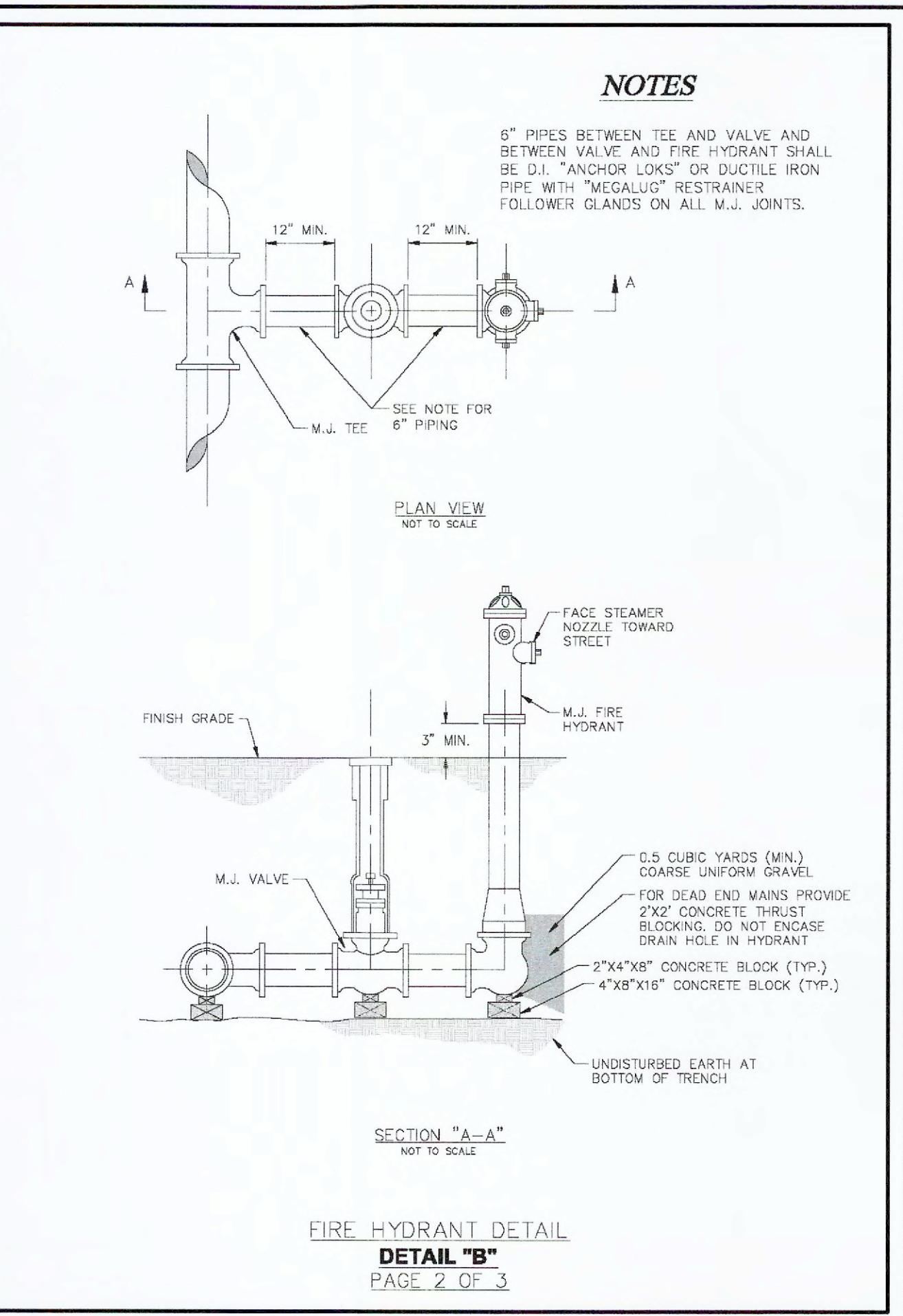


NOTES
 1) SEE SPECIFICATIONS FOR ADDITIONAL DETAILS FOR BEDDING AND BACKFILL.
TYPICAL TRENCH SECTION FOR PVC PIPE
 NOT TO SCALE
DETAIL "A"
 PAGE 1 OF 2

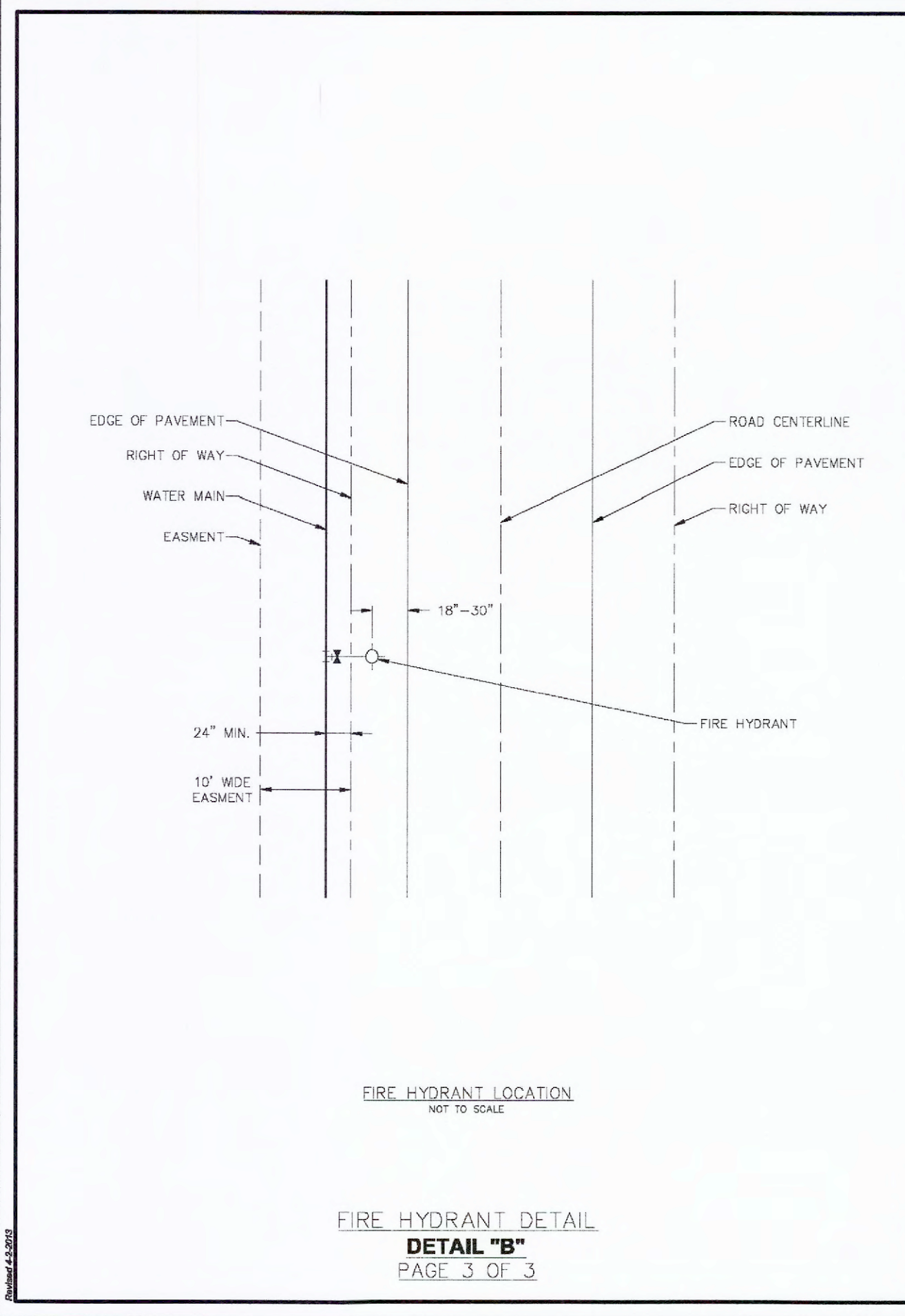


NOTES
 6" PIPES BETWEEN VALVE AND FIRE HYDRANT SHALL BE D.I. "ANCHOR LOCKS" OR DUCTILE IRON PIPE WITH "MEGALUG" RESTRAINER FOLLOWER GLANDS ON ALL M.J. JOINTS.
PLAN VIEW
 NOT TO SCALE
SECTION "A-A"
 NOT TO SCALE
FIRE HYDRANT DETAIL
DETAIL "B"
 PAGE 1 OF 3

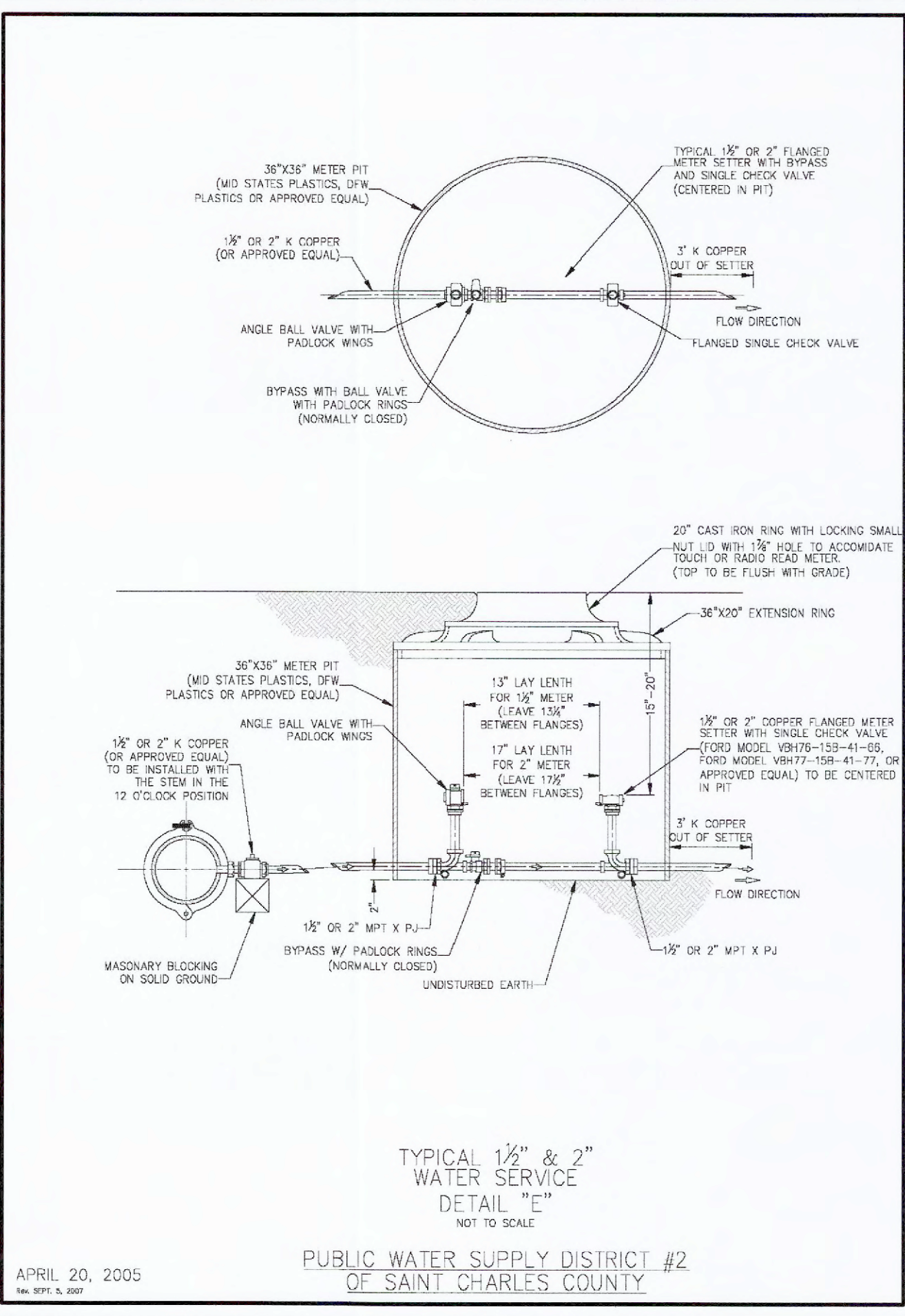


NOTES
 6" PIPES BETWEEN TEE AND VALVE AND BETWEEN VALVE AND FIRE HYDRANT SHALL BE D.I. "ANCHOR LOCKS" OR DUCTILE IRON PIPE WITH "MEGALUG" RESTRAINER FOLLOWER GLANDS ON ALL M.J. JOINTS.
PLAN VIEW
 NOT TO SCALE
SECTION "A-A"
 NOT TO SCALE
FIRE HYDRANT DETAIL
DETAIL "B"
 PAGE 2 OF 3

- PUBLIC WATER SUPPLY DISTRICT NO. 2**
- ALL WATER MAINS, VALVES, FITTINGS, HYDRANTS, AND RELATED ITEMS ARE TO BE INSTALLED IN ACCORDANCE WITH THE CURRENT ST. CHARLES COUNTY PWSO NO. 2 GUIDELINES AND SPECIFICATIONS AS APPROVED BY MDNR REVIEW NO. 6050805-13.
 - PWSO NO. 2 REQUIRES ONE (1) WEEK NOTICE PRIOR TO THE START OF CONSTRUCTION.
 - ALL METER PITS/VAULTS ARE TO BE INSTALLED IN GREEN SPACE PER THE WATER DISTRICT'S SPECIFICATIONS.
 - ALL PRIVATE FIRE HYDRANTS MUST BE PAINTED RED PER THE WATER DISTRICT'S SPECIFICATIONS.
 - IT IS THE CONTRACTOR'S RESPONSIBILITY TO OBTAIN ALL NECESSARY PERMITS. COPIES OF ALL REQUIRED PERMITS SHALL BE PROVIDED TO THE WATER DISTRICT PRIOR TO CONSTRUCTION.
 - THE EXISTING WATER MAIN SHALL BE POTHOLED IN 2 LOCATIONS WHERE THE PROPOSED DRIVE THRU PAVEMENT WILL BE COVERING IT. ST. CHARLES COUNTY PWSO NO. 2 SHALL BE GIVEN 48 HOURS NOTICE TO SCHEDULE AN INSPECTOR ON SITE TO WITNESS THE POTHOLING.



FIRE HYDRANT LOCATION
 NOT TO SCALE
FIRE HYDRANT DETAIL
DETAIL "B"
 PAGE 3 OF 3



TYPICAL 1 1/2" & 2" WATER SERVICE
 NOT TO SCALE
DETAIL "E"
 PUBLIC WATER SUPPLY DISTRICT #2 OF SAINT CHARLES COUNTY

AS-BUILT PUBLIC UTILITY FINAL MEASUREMENTS

- THE FOLLOWING PUBLIC AND PRIVATE UTILITIES HAVE BEEN LOCATED AND MEASURED AND THE RESULTS OF THOSE MEASUREMENTS ARE SHOWN ON THIS SET OF FINAL MEASUREMENT PLANS:
- STORM SEWERS, STORM SEWER LENGTHS, STORM SEWER PIPE SIZES, STORM SEWER FLOWLINES AND DEPTHS OF STORM SEWER STRUCTURES.
 - PRIVATE STORM SEWERS, PRIVATE STORM SEWER LENGTHS, PRIVATE STORM SEWER PIPE SIZES, PRIVATE STORM SEWER FLOWLINES AND DEPTHS OF PRIVATE STORM SEWER STRUCTURES.
 - SANITARY SEWERS, SANITARY SEWER PIPE SIZES, SANITARY SEWER FLOWLINES AND DEPTHS OF SANITARY SEWER STRUCTURES.
 - PRIVATE SANITARY SEWERS, PRIVATE SANITARY SEWER LENGTHS, PRIVATE SANITARY SEWER PIPE SIZES, PRIVATE SANITARY SEWER FLOWLINES AND DEPTHS OF PRIVATE SANITARY SEWER STRUCTURES.
 - FIRE HYDRANT
 - WATER VALVES
 - PRIVATE WATER METER
 - PRIVATE LIGHT STANDARDS

ALL PUBLIC UTILITIES SHOWN HEREON AS BEING AS-BUILT ARE LOCATED WITHIN DESIGNATED EXISTING OR PROPOSED EASEMENTS.

SIGNED: _____
 P.E./L.S. _____



PROJECT TITLE:
 AS-BUILT PLANS FOR
 PERUQUE CROSSING OUTLOT 14
 2181 WEST TERRA LANE
 O'FALLON, MISSOURI 63366

**ENGINEERING
 PLANNING
 SURVEYING**

221 Point West Blvd.
 St. Charles, MO 63301
 636-928-5552
 FAX 928-1718

DISCLAIMER OF RESPONSIBILITY
 I hereby certify that the documents intended to be authenticated by my seal are limited to this sheet, and I hereby disclaim any responsibility for all other drawings, specifications, estimates, reports or other documents or instruments existing to or intended to be used for any part or parts of the architectural or engineering project or survey.

REVISIONS

NO.	DESCRIPTION

Developer / Owner:
 S S and D Properties L.L.C.
 501 First Capitol Drive, Suite 5
 St. Charles, Missouri 63301-2768
 (636) 946-9753

CONSTRUCTION DETAILS

P+Z No. #18-005075
Approval Date 08-09-18
City No. #

Page No.
 10 of 11