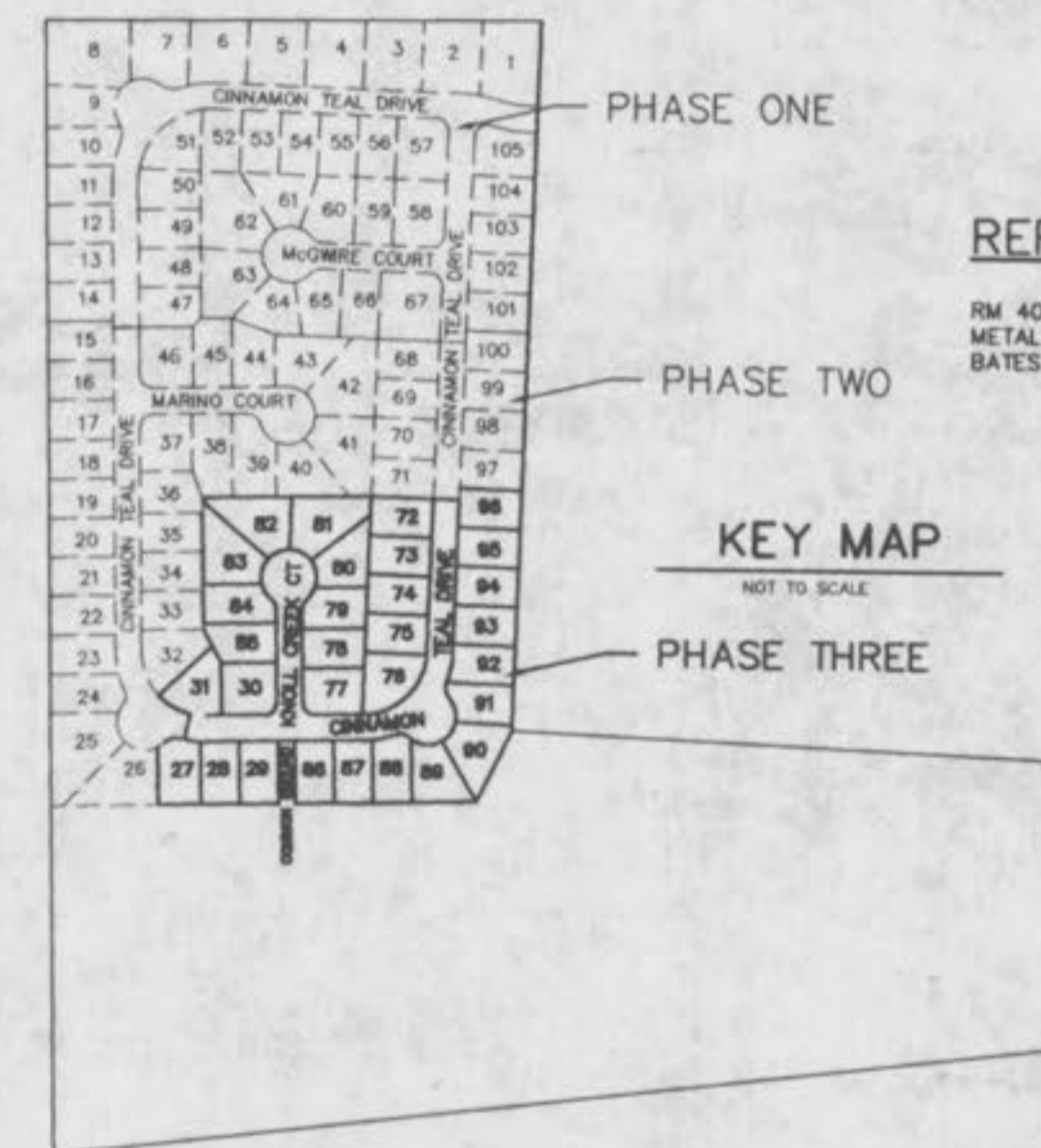


SANITARY, WATER AND STORM SEWER AS-BUILTS FOR  
**THE KNOLLS**  
**PHASE THREE (30 LOTS)**

A TRACT OF LAND BEING PART OF  
 U.S. SURVEY 1641, TOWNSHIP 46 NORTH,  
 RANGE 3 EAST OF THE FIFTH PRINCIPAL MERIDIAN,  
 ST. CHARLES COUNTY, MISSOURI



PREPARED FOR:  
**JERRY SCHEIDEGGER**  
 205 N. FIFTH STREET SUITE 204  
 ST. CHARLES, MO. 63301  
 (314) 946-0761



**REFERENCE BENCHMARK**  
 RM 40, CROSS CUT ON TOP NORTH END OF A CORRUGATED METAL PIPE AT THE NORTHEAST CORNER OF MCCLUER ROAD, BATES ROAD, AND HENNING ROAD. ELEVATION = 526.94'

DISCLAIMER OF RESPONSIBILITY  
 I hereby certify that the information contained herein is true and correct to the best of my knowledge and belief. I hereby disclaim any responsibility for all other drawings, specifications, estimates, reports or other documents or instruments existing or intended to be used in any part of or parts of the engineering or engineering project or survey.

Copyright 1994  
 Bax Engineering Company, Inc.  
 All Rights Reserved

**REVISIONS**

| NO. | DATE | DESCRIPTION |
|-----|------|-------------|
|     |      |             |
|     |      |             |
|     |      |             |
|     |      |             |
|     |      |             |
|     |      |             |
|     |      |             |
|     |      |             |
|     |      |             |
|     |      |             |

THIS IS TO CERTIFY THAT DURING THE MONTH OF MARCH, 2000, BY ORDER OF JERRY SCHEIDEGGER, EXECUTED AN AS-BUILT SURVEY OF THE EXISTING WATER MAIN STRUCTURES, SANITARY AND STORM SEWERS, FOR THE KNOLLS, PHASE THREE. THE SANITARY LATERALS WERE BUILT PER PLAN AS SUPPLIED TO BAX ENGINEERING BY THE CONTRACTOR, THEREFORE THEIR LOCATION IS ASSUMED APPROXIMATE. ALL SEWERS SHOWN IN ACCORDANCE WITH APPROVED IMPROVEMENT PLANS UNLESS OTHERWISE NOTED. THE RESULTS OF THIS AS-BUILT SURVEY ARE SHOWN ON THIS PLAT TO THE BEST OF MY KNOWLEDGE AND BELIEF.

*William Scott Kankolenski*  
 BAX ENGINEERING CO., INC.  
 WILLIAM SCOTT KANKOLENSKI  
 MO REG. L.S.D. #2197

**LEGEND**

- |        |                               |       |  |
|--------|-------------------------------|-------|--|
| □      | CURB INLET                    | ☉     | STREET LIGHT                           |
| □      | DOUBLE CURB INLET             | —582— | EXISTING CONTOUR                       |
| □      | AREA INLET                    | —582— | PROPOSED CONTOUR                       |
| M.H.   | MANHOLE                       | 5'x5' | STREET SIGN                            |
| F.E.   | FLARED END SECTION            | —     | NO PARKING SIGN                        |
| E.P.   | END PIPE                      | W     | WATER VALVE                            |
| C.P.   | CONCRETE PIPE                 | BO    | BLOW OFF ASSEMBLY                      |
| R.C.P. | REINFORCED CONCRETE PIPE      | —     | FLOWLINE ELEVATION OF HOUSE CONNECTION |
| C.M.P. | CORRUGATED METAL PIPE         | —     | FLOWLINE ELEVATION OF SEWER MAIN       |
| C.I.P. | CAST IRON PIPE                |       |  |
| P.V.C. | POLY VINYL CHLORIDE (PLASTIC) |       |  |
| C.O.   | CLEAN OUT                     |       |  |
| ⊗      | FIRE HYDRANT                  |       |  |
| —S—    | STORM SEWER                   |       |  |
| —O—    | SANITARY SEWER                |       |  |

**SHEET INDEX**

- |       |                         |
|-------|-------------------------|
| 1     | COVER SHEET             |
| 2     | SITE PLAN               |
| 3     | SANITARY SEWER PROFILES |
| 4 - 5 | STORM SEWER PROFILES    |

AS-BUILTS ADDED MARCH, 2000

**BAX**  
 ENGINEERING  
 PLANNING  
 SURVEYING  
 1852 South Cloverleaf Drive  
 St. Peters, MO. 63376-6445  
 314-928-5552  
 FAX 928-1718

02-06-00  
 DATE  
 97-9197  
 PROJECT NUMBER  
 1 OF 5  
 SHEET OF  
 9197ABS3COV.DWG  
 FILE NAME  
 BGC WSK  
 DRAWN CHECKED

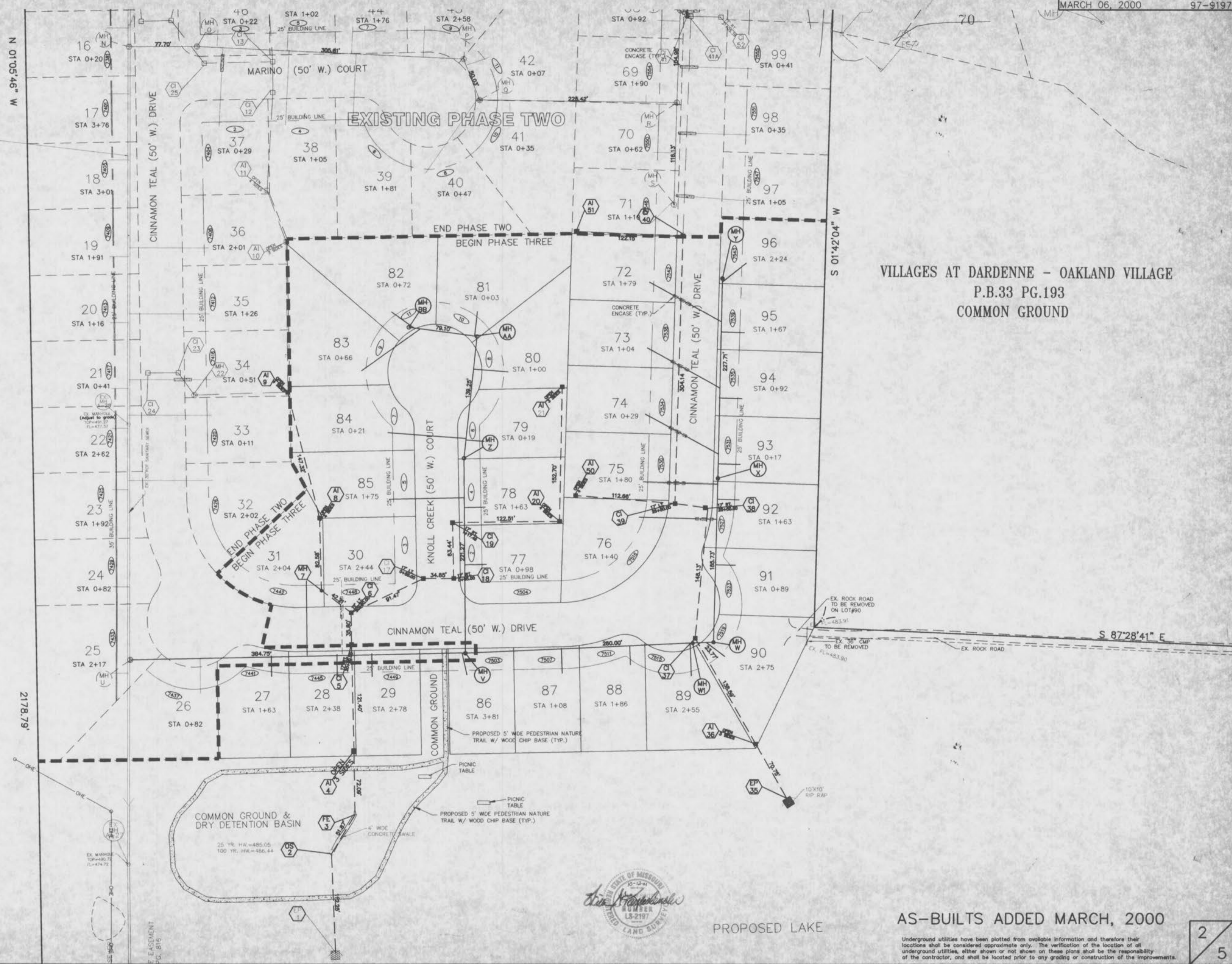
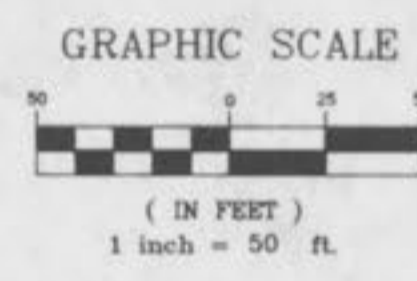
Knolls Phase III  
 As-Built

E:\ukg\990000\us\8197abs3cov.dwg Thu Sep 28 12:26:14 2000 STA 18 BC



DCSD S-152 DARDENNE CREEK INTERCEPTOR SEWER

PROPERTY N/F  
 NOVUS PROPERTY HOLDINGS, L.L.C.  
 1953/429  
 LOT 1 OF MONSANTO ANIMAL AGRICULTURAL FARM  
 P.B. 22 PG. 165



VILLAGES AT DARDENNE - OAKLAND VILLAGE  
 P.B.33 PG.193  
 COMMON GROUND



PROPOSED LAKE

AS-BUILTS ADDED MARCH, 2000

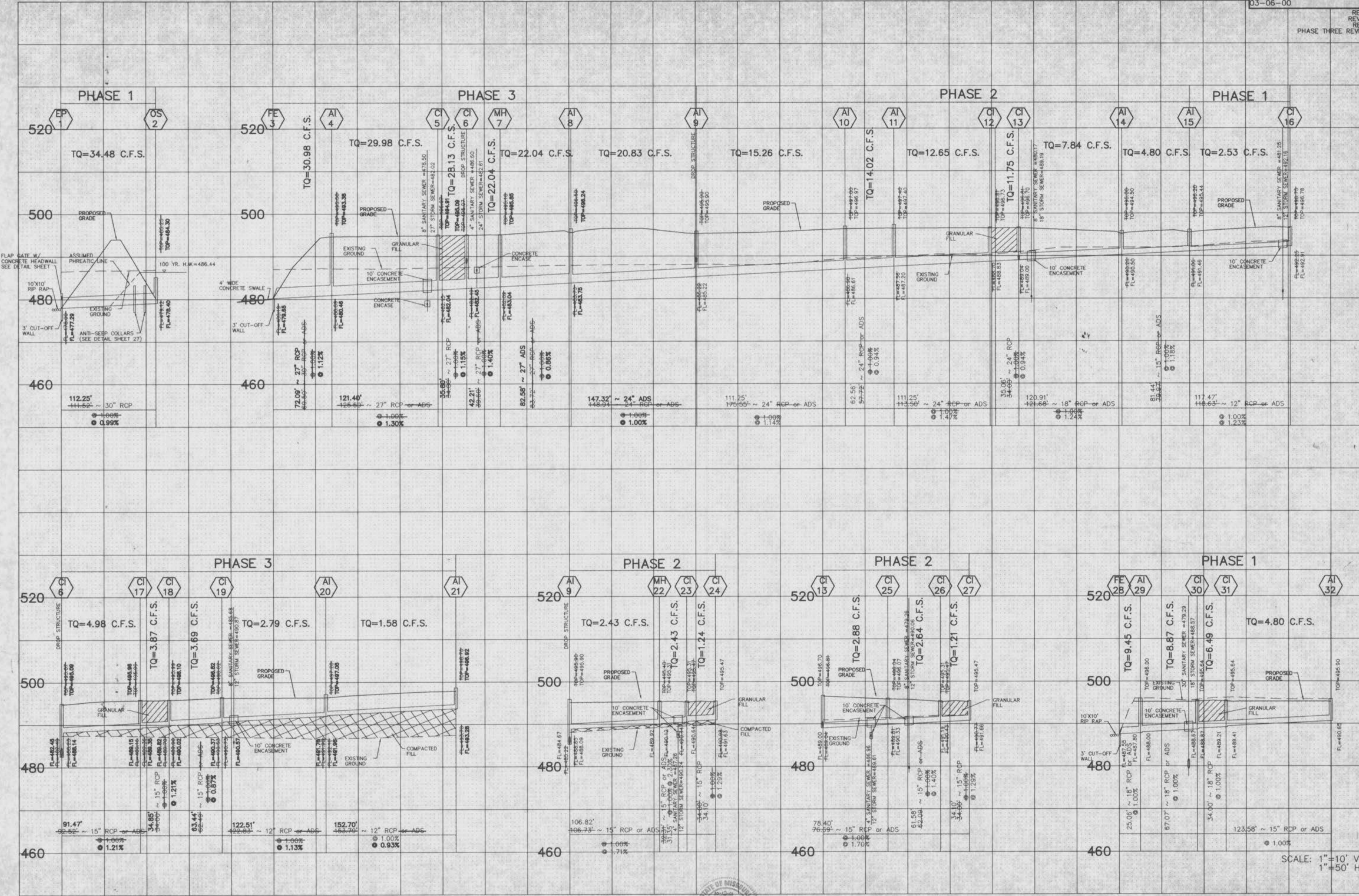
Underground utilities have been plotted from available information and therefore their locations shall be considered approximate only. The verification of the location of all underground utilities, either shown or not shown on these plans shall be the responsibility of the contractor, and shall be located prior to any grading or construction of the improvements.

2  
5

Knolls Phase III  
 as-builts

E:\proj\00000\lot1\19197\2003.dwg Thu May 10 11:45:00 2001 STA 1B.BC





E:\Map\000001\us\9157\9157.dwg Thu May 31 13:28:26 2001 STA 17 D.S.



AS-BUILTS ADDED MARCH, 2000

Knolls Phase III  
As built