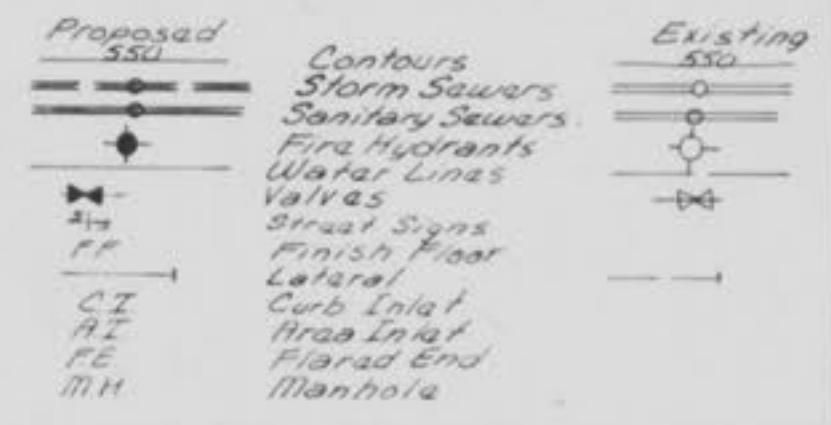


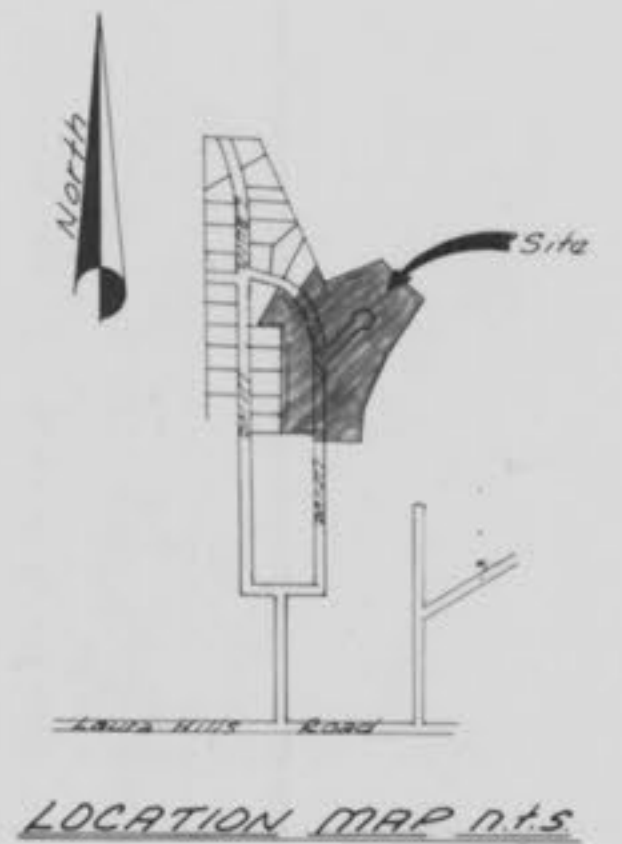
General Note
Contractor Shall Verify Location
and Elevation of Exist Manholes

SYMBOL LEGEND



Manhole Adjustments		Existing Flowlines	
MH #	Ex. Elev.	P. Elev.	
1	No Cap	546.60	R. out 538.03 R. in 538.23
3	543.50	540.90	E. R. out 539.10 N.E. R. in 539.14
4	547.86	549.10	SE. R. out 539.39 S.W. R. in 539.80 N.E. R. in 536.24
5	550.48	547.37	R. out 536.95 R. in 537.15
6	547.69	546.46	R. out 537.52 R. in 537.72
7	546.37	546.22	R. out 538.06 R. in 538.26
101	531.24	533.20	R. out 516.99 R. in 517.08
103	542.52	540.80	N.E. R. out 524.23 W. R. in 524.88 N. R. in 524.64
10	547.66	547.66	R. out 537.85 R. in 537.95

- The verification of the location of all underground utilities, either shown or not shown, shall be the responsibility of the contractor, and shall notify all utility companies prior to construction to have existing utilities located prior to grading or construction improvements.
- Water, gas and other underground utilities shall not conflict with the depth or horizontal location of existing and proposed sanitary and storm sewers, including manhole laterals.
- All P.V.C. water lines shall be class 200 or 240 21" minimum deflection on water lines shall not exceed 2" per foot. If greater than 5' distance is required, then 1" deflection shall be used.
- All P.V.C. sanitary sewer pipe to be 24" conforming to 500-5-301 with a class 4 bedding. (See 500-5-301.1).
- All storm sewer pipe within proposed right of way to be reinforced concrete pipe (ASST C) class III minimum unless otherwise shown on the plans.
- Storm or sanitary lines constructed above the original ground line shall have the fill above the lines compacted to 90% maximum dry density to conform to specified pipe connection joint (Current A.S.T.M. Specification - 5.2.2).
- All ground backfill below proposed storm, water or sanitary lines shall be granular material compacted to a minimum of 90% determined by standard proctor test.
- Storm sewers 18" and smaller shall be 12" (12" R.O.W.) unless otherwise shown on plans or specified herein, with 12" minimum depth in manholes and 18" (18" R.O.W.).
- All pipe joints to have joints of tubes one foot behind the curb.
- The ultimate allowable vertical distance from the lowest point of a basement to the flowline of a sanitary sewer at any given location shall not be less than the diameter of the main sewer plus 2' feet.
- Easements have been provided for sanitary and storm sewers and all utilities and are shown on the records plat, the records plat for this and location of easements provided. All easements have been sustained for house laterals.
- All rough grading shall be within 12" of top or base of these shown on the existing plan.
- No slope shall be steeper than 1:1 and shall be either set back and mulched or sodded.
- No erosion areas shall exist which require seeding or sodding or necessary to stabilize eroding conditions.
- All construction materials furnished shall conform to the city of Olathe standards.
- Final proposed records plat shall be shown on record location of the easements mentioned.



SHEET INDEX

Sheet 1	Site and Grading Plan
Sheet 2	Street Profiles
Sheet 3	Storm Sewer Profiles & Misc. Details
Sheet 4	Drainage Area Map
Sheet 5	Miscellaneous Details

GBA
GEORGE BUTLER ASSOCIATES, INC.
CONSULTING ENGINEERS/ARCHITECTS
LANDSCAPE ARCHITECTS/PLANNERS

OFFICES:
100 W. STATE ST. PLAZA, SUITE 200, KANSAS CITY, MISSOURI 64101
100 W. CENTER SQUARE, SUITE 200, KANSAS CITY, MISSOURI 64101
100 W. CENTER SQUARE, SUITE 200, KANSAS CITY, MISSOURI 64101
100 W. CENTER SQUARE, SUITE 200, KANSAS CITY, MISSOURI 64101

LAURA HILLS PLAT 3, SECTION 2
SITE AND GRADING PLAN
FOR
MEL SCHNIEDER CONSTRUCTION, INC.

DESIGNED BY: MTS. DRAWN BY: JRP. CHECKED BY: GCH.

JOB NO. 85-4250
DATE 10/29/85
SCALE As Shown
SHEET NO. 1 OF 5

