

LINE	BEARING	DISTANCE	CURVE	DELTA	RADIUS	ARC	TANGENT	CHORD	CHORD BRG
1	N 89° 42' 19" E	105.17	1	18° 16' 10"	220.00	62.47	31.45	62.26	N 82° 32' 56" W
2	S 00° 17' 41" E	26.24	2	24° 21' 44"	400.00	170.08	86.35	168.80	S 11° 26' 58" W
3	N 00° 43' 54" W	20.00							
4	N 00° 44' 03" W	15.00							
5	N 00° 43' 41" W	36.13							

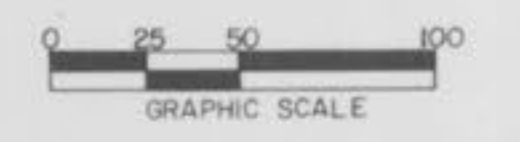
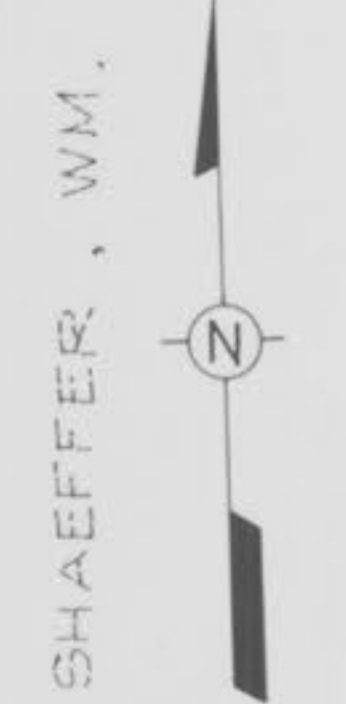
12-19-88 M.H. 226 - M.H. 227 J.R.E.
 CONN. RI 175, App
 STORM M.H. 16A

**LONE STAR - PHASE II
 PLAT TWO
 SITE PLAN**

SEPT., 1988 86-155F

Rev. 11-11-88 Mr. Rich, DE
 STORM SEWERS
 12-2-88 WATBINE, STRAHLING J.R.E., D.P.
 12-16-88 M.H. 217 A Not Sewer J.R.E.
As-Built - 3-6-90 DR

NOTE
 SANITARY SEWER FROM
 M.H. 200 THROUGH M.H.
 205 TO BE BUILT IN
 ACCORDANCE WITH LONE
 STAR - PHASE II, PLAT ONE
 PLANS BY P.E.S., 8-20-87
 AUG., 88.



ROETTGER, ROBT.

As-Built 3/19/90

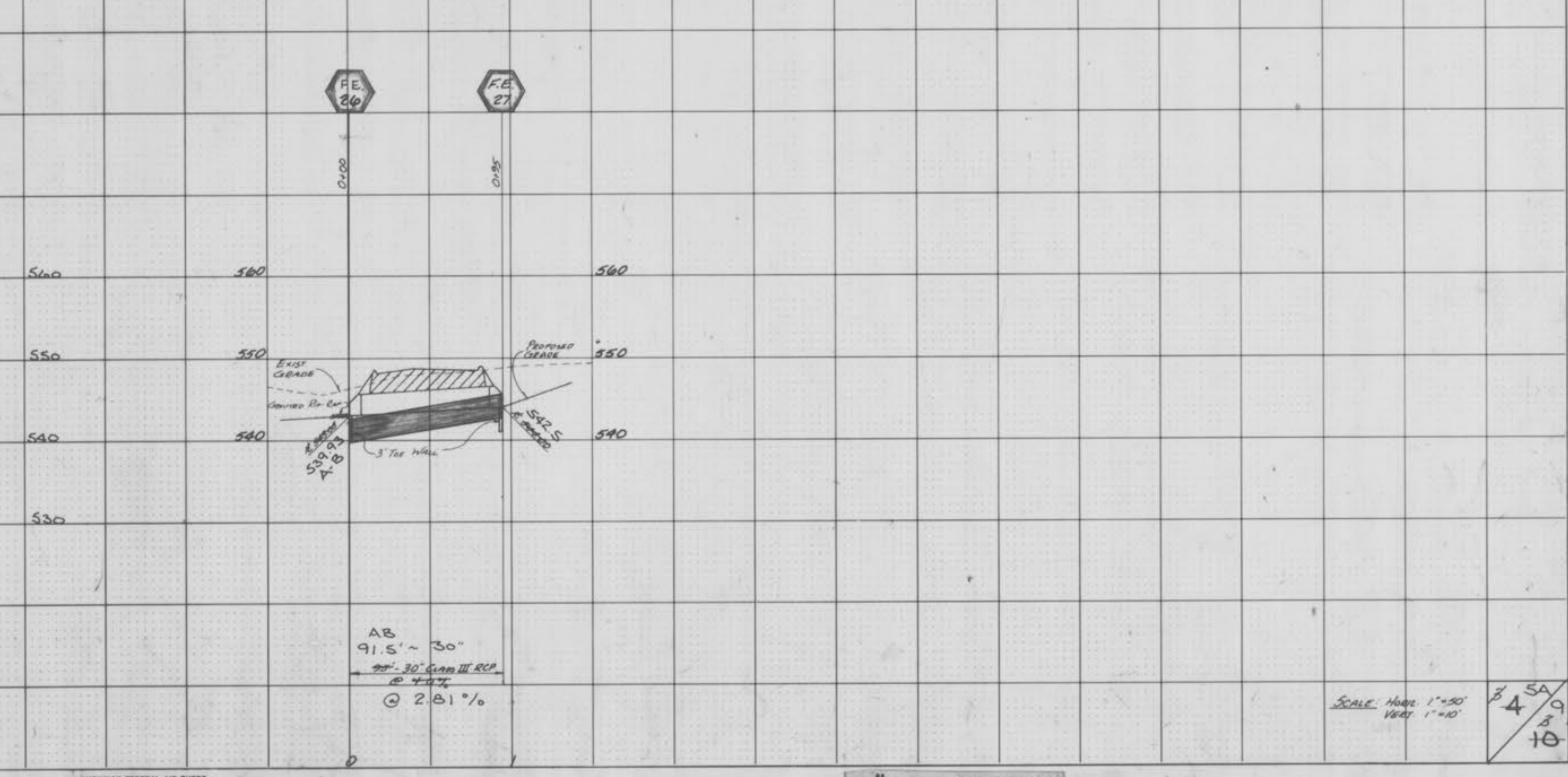
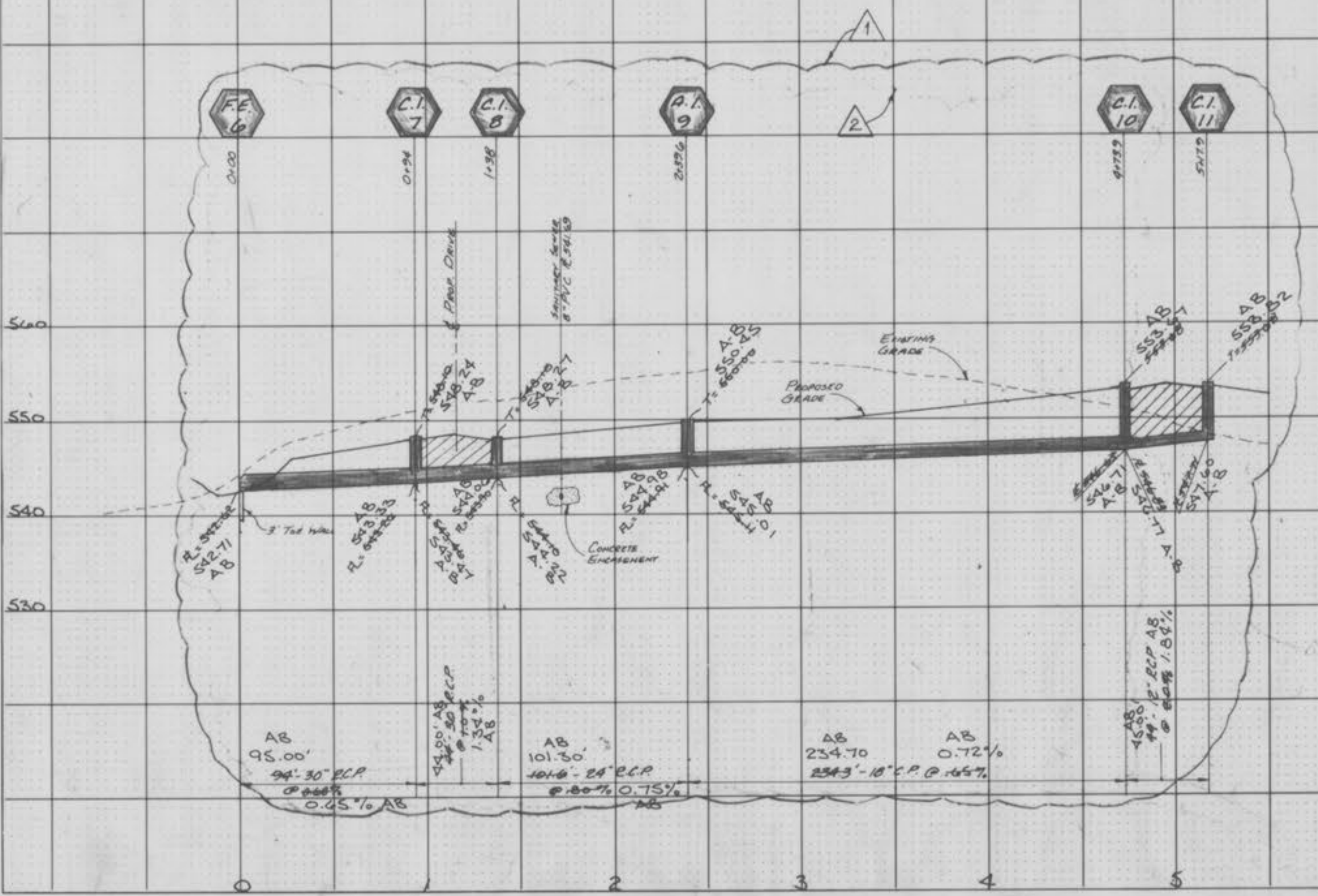
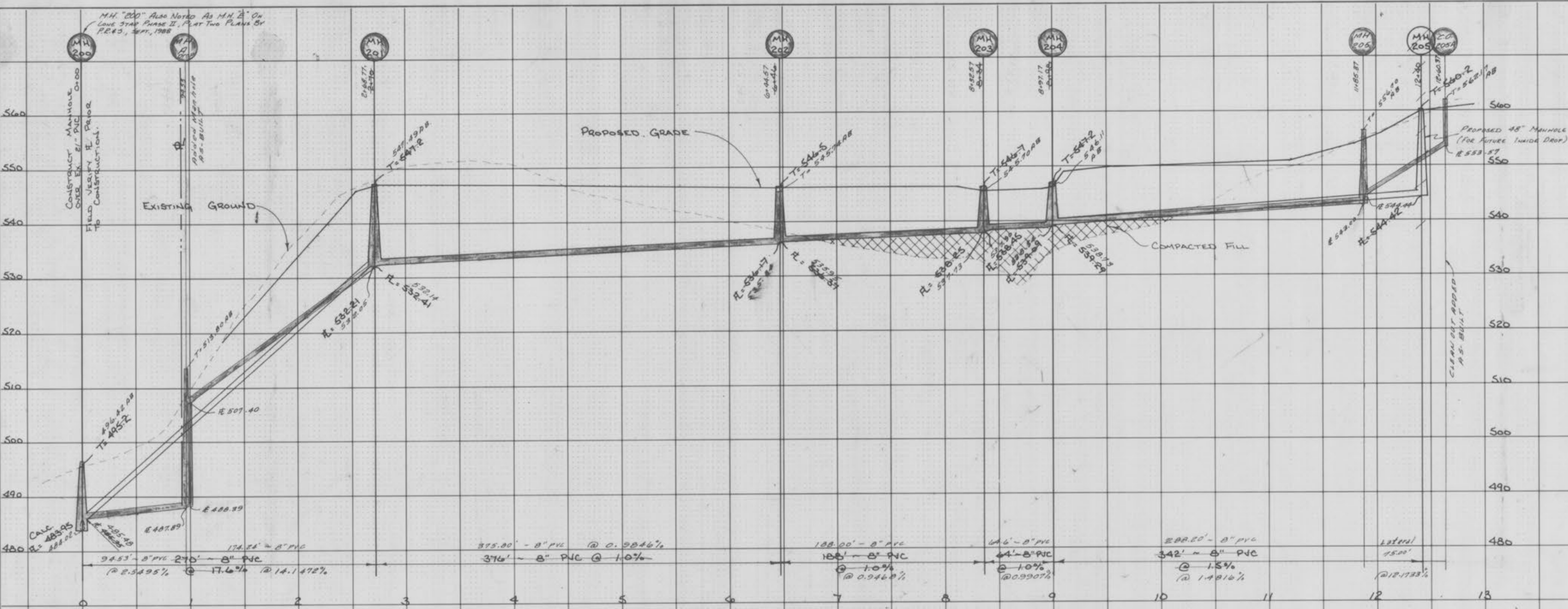
LONE STAR PHASE II
PLAT ONE
SEWER PROFILES

86-155F AUGUST, 1988

Rev 9-14-88 Storm Sewer 1st
Rev 9-20-88 Storm Sewer 1st
Rev 9-20-88 Rev Storm Due To Rock 1st
Rev 9-27-88 Due To Rock 1st
AS-BUILT 1-18-89 MAB
AS-BUILT (E-TORN) 3-6-90 WR

DATE _____
BY _____
SURVEYED _____
TEMPLATED _____
NOTE BOOK _____
AREAS CHECKED _____

DATE _____
BY _____
SURVEYED _____
TEMPLATED _____
NOTE BOOK _____
AREAS CHECKED _____



AS-BUILT 1-18-89 #3095
3-6-90 WR

"AS-BUILT"

SCALE: Horiz 1"=50'
Vert 1"=10'

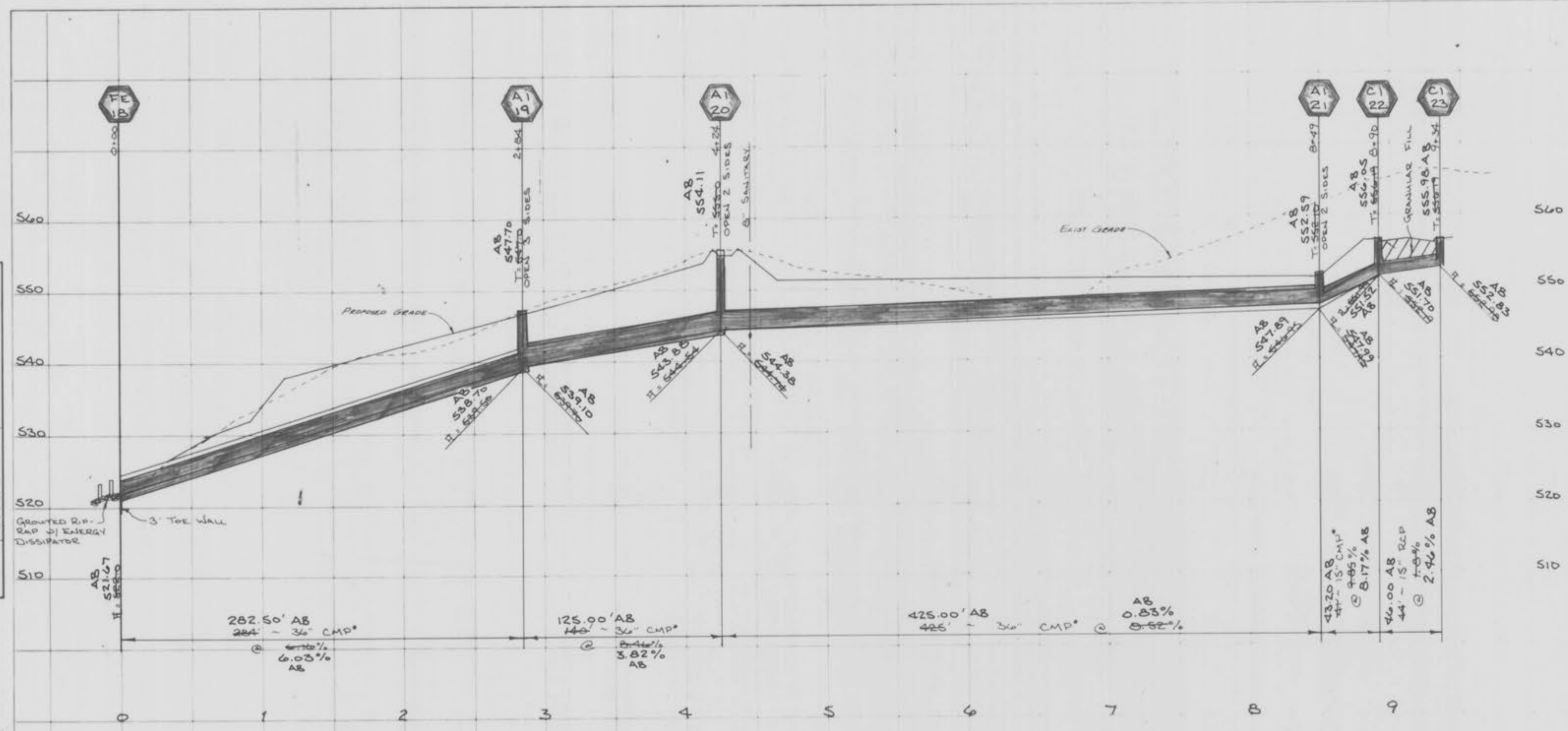
34
5A
8
10

LONE STAR - PHASE II - PLAT II

LONE STAR PHASE TWO
 PLAT TWO
 STORM SEWER PROFILES
 SEPT. 1988 86-155F
 REV. 11-11-1988 Hit Rock DR
 12-5-88 E @ A1 21, P&G Co DR JRE
 12-7-88 Pipe Coating Note JRE
 3-6-90 As-BUILTS DR

DATE _____ BY _____
 SURVEYED _____
 FINAL SURVEY _____
 NOTE BOOK _____
 NO. _____
 AREAS CHECKED _____

DATE _____ BY _____
 SURVEYED _____
 ORIGINAL SURVEY _____
 NOTE BOOK _____
 NO. _____
 AREAS CHECKED _____



* NOTE: ALL CORRUGATED METAL PIPES ARE TO BE 16 GAUGE WITH EITHER BLENDED POLYMER OR ASPHALT COATED.

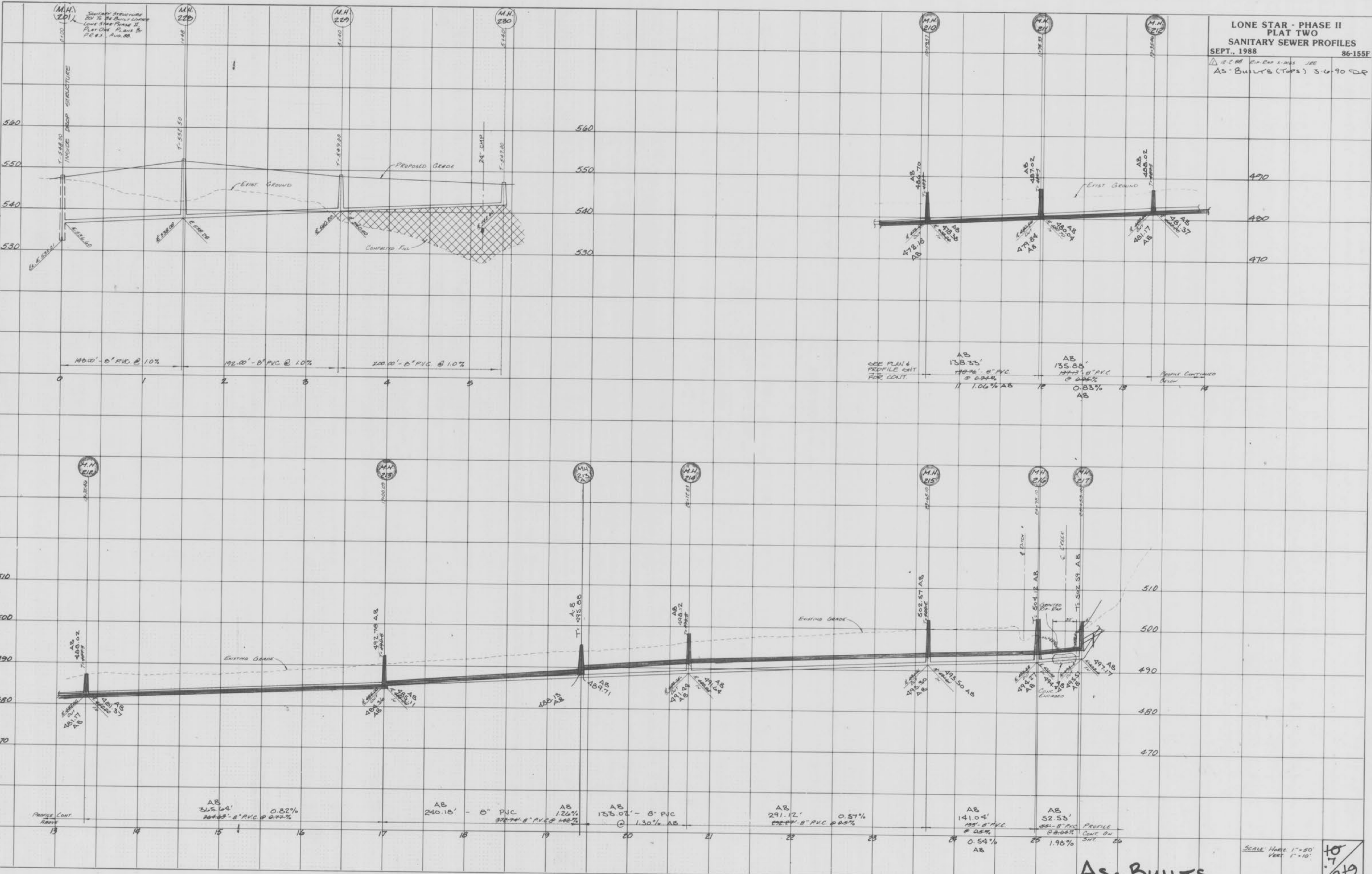
SCALE Horiz 1"=50'
 Vert 1"=10'
 9A
 6
 9/19

As-BUILTS

LONE STAR - PHASE II
 PLAT TWO
 SANITARY SEWER PROFILES
 SEPT., 1988 86-155F
 AS-BUILTS (TOPS) 3-6-90 DR

FINAL SURVEY BY: [] DATE: []
 WORKED PLOTTED
 NOTE BOOK TEMPLATE
 AREA: []
 NO. []
 THESE CHECKED

ORIGINAL SURVEY BY: [] DATE: []
 WORKED PLOTTED
 NOTE BOOK TEMPLATE
 AREA: []
 NO. []
 THESE CHECKED



As-BUILTS

Scale: Horiz 1"=50'
 Vert 1"=10'

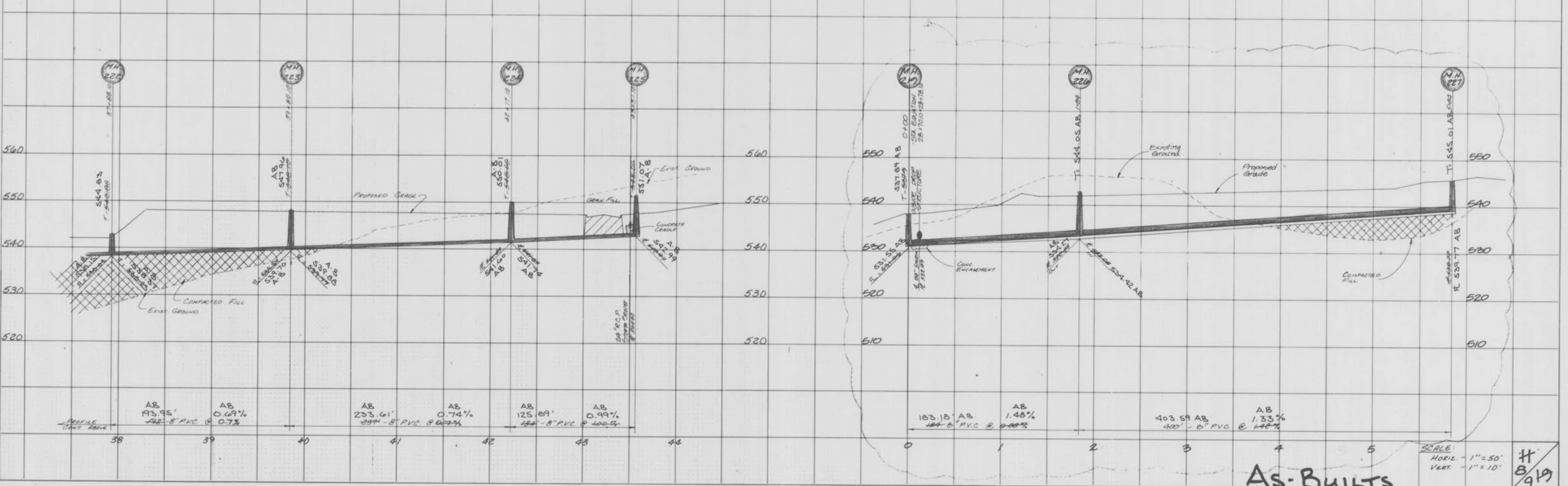
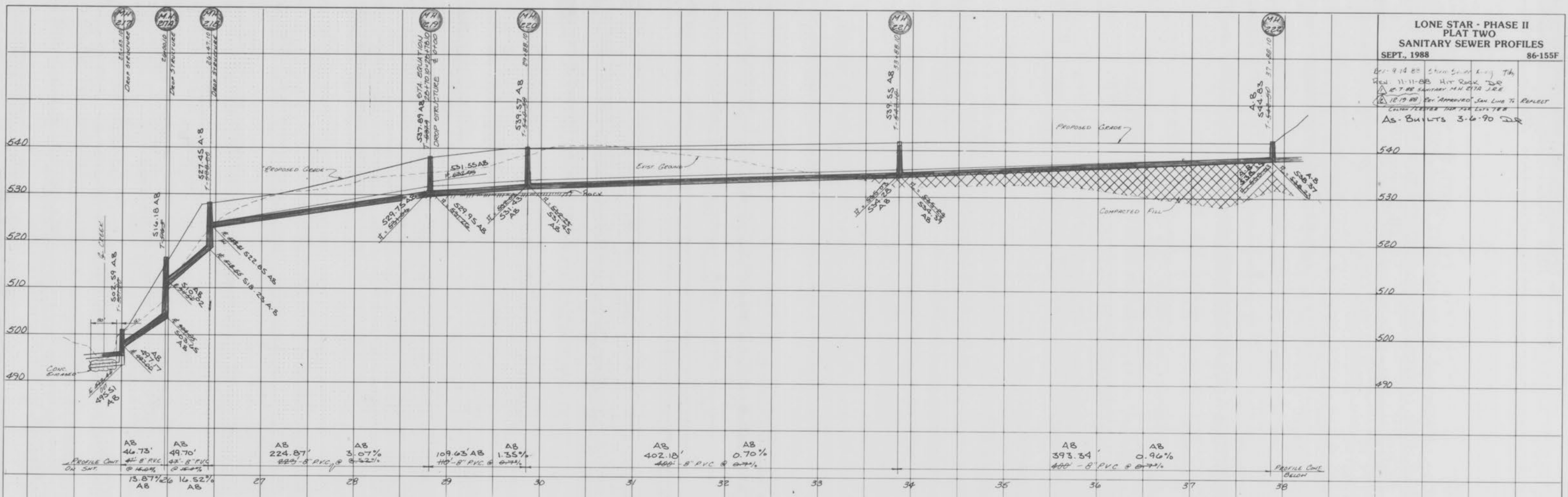
10
 7
 949

LONE STAR - PHASE II
 SANITARY SEWER PROFILES
 SEPT., 1988 86-155F

REV. 9-14-88 Show Sewer Line To
 Rev. 11-11-88 Hit Rock DO
 Rev. 12-28-88 SANITARY MH 217A J.E.E.
 Rev. 12-19-88 Rev. APPROVED SAN LINE TO REFLECT
 COLLECTOR PIPES FOR 1988 LOTS 788
 AS-BUILTS 3-6-90 DR

FINAL SURVEY DATE
 BY
 SURVEYED
 ADJUSTED
 TEMPLATE
 NOTE BOOK
 AREA CHECKED

ORIGINAL SURVEY DATE
 BY
 SURVEYED
 ADJUSTED
 TEMPLATE
 NOTE BOOK
 AREA CHECKED



SCALE:
 HORIZ. - 1" = 50'
 VERT. - 1" = 10'
AS-BUILTS
 H
 8/9/89

