

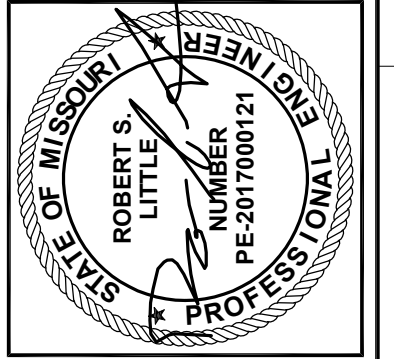
- NOTES:**
- INSTALL TEMPORARY BYPASS WATER MAIN IN ACCORDANCE WITH SECTION 01 51 38 PRIOR TO BEGINNING CUT-IN WORK.
 - COMPLETE ALL SERVICE CONNECTIONS TO TEMPORARY BYPASS PRIOR TO BEGINNING CUT-IN WORK.
 - CONNECT TEMPORARY BYPASS TO EXISTING HYDRANT AND RECONNECT TO NEW HYDRANT AFTER INSTALLATION OF NEW HYDRANT.
 - PRE-EXCAVATE, SHORE AND PLATE CUT-IN WORK LOCATIONS TO MINIMIZE SHUT-DOWN TIME REQUIRED.
 - COORDINATE SHUT-DOWNS WITH OWNER. SUBMIT SCHEDULE TO OWNER AT LEAST 10 WORKING DAYS PRIOR TO BEGINNING WORK FOR REVIEW AND APPROVAL.
 - REFER TO GENERAL REQUIREMENTS 28 - HOURS OF WORK IN SPECIFICATIONS FOR WORK RESTRICTIONS.
 - SEE STRADDLE BLOCK DETAIL ON SHEET C-201 FOR RESTRAINT REQUIREMENTS.

1520 S Fifth Street Suite 306
St Charles, Missouri 63303
www.woodardcurran.com

WOODARD CURRAN

COMMITMENT & INTEGRITY DRIVE RESULTS

THIS DOCUMENT IS THE PROPERTY OF WOODARD & CURRAN, INC. AND ITS CLIENT. REPRODUCTION OR MODIFICATION WITHOUT WRITTEN PERMISSION IS PROHIBITED.



REV	ISSUED FOR	DESCRIPTION	DATE	CHECKED BY
0			07/18/17	ADL

DESIGNED BY: ADL
DRAWN BY: KTR
PROJECT NUMBER: 2297900-C01-C107.dwg

MAIN STREET CUT-IN PLAN

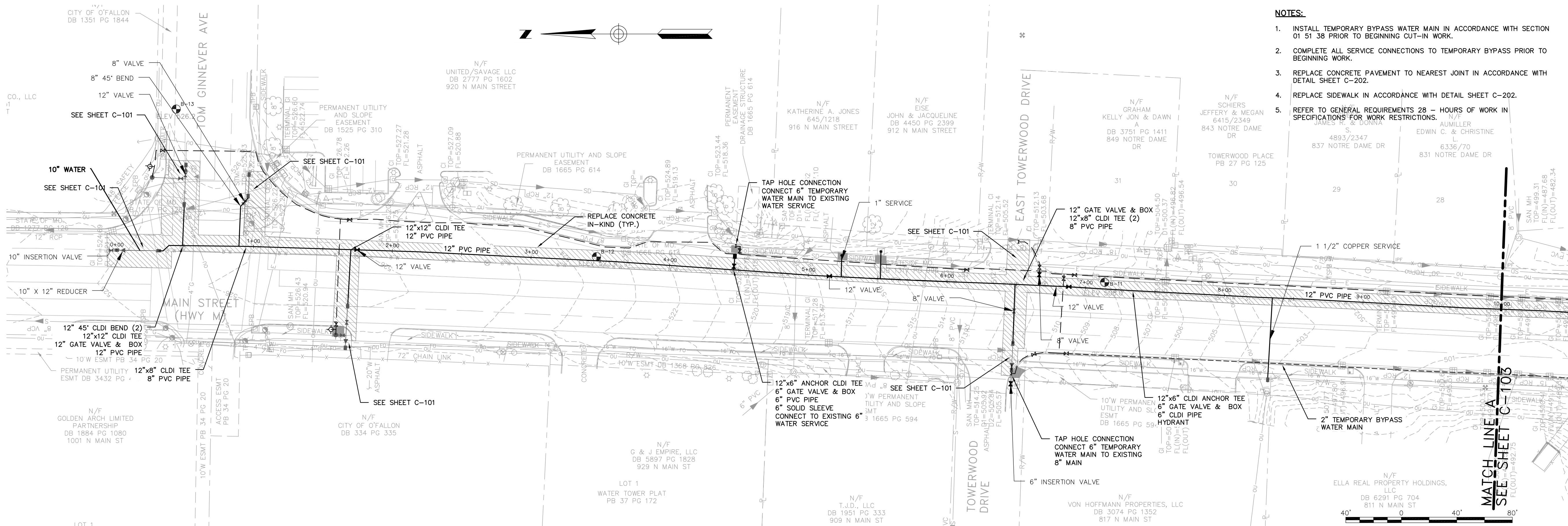
CITY OF O'FALLON, MISSOURI

MAIN STREET WATER MAIN REPLACEMENT

JOB NO.: 229790.00
DATE: APRIL 2018
SCALE: 1"=40'
SHEET: 2 OF 12

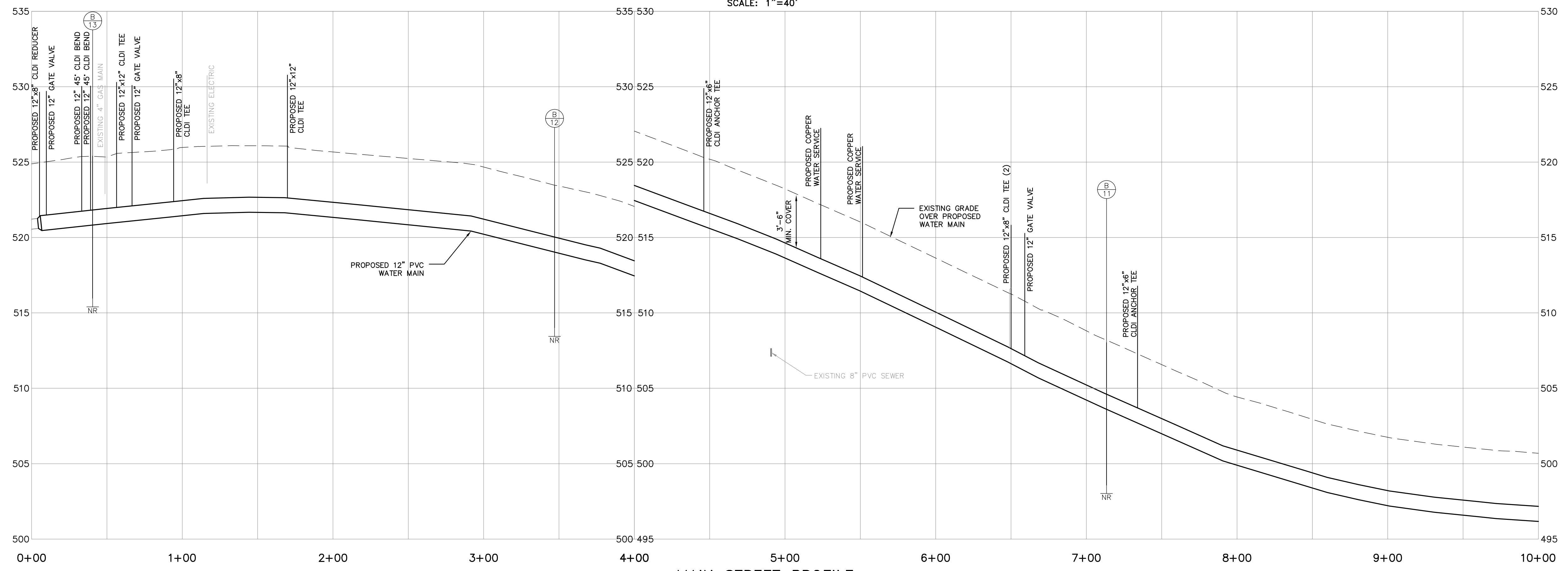
C-101

AS-BUILT



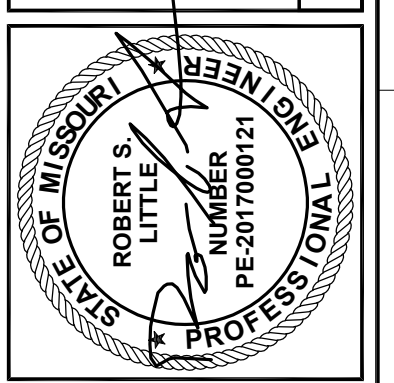
- NOTES:**
1. INSTALL TEMPORARY BYPASS WATER MAIN IN ACCORDANCE WITH SECTION 01 51 38 PRIOR TO BEGINNING CUT-IN WORK.
 2. COMPLETE ALL SERVICE CONNECTIONS TO TEMPORARY BYPASS PRIOR TO BEGINNING WORK.
 3. REPLACE CONCRETE PAVEMENT TO NEAREST JOINT IN ACCORDANCE WITH DETAIL SHEET C-202.
 4. REPLACE SIDEWALK IN ACCORDANCE WITH DETAIL SHEET C-202.
 5. REFER TO GENERAL REQUIREMENTS 28 - HOURS OF WORK IN SPECIFICATIONS FOR WORK RESTRICTIONS.

MAIN STREET PLAN
SCALE: 1"=40'



MAIN STREET PROFILE
SCALE: 1"=40' HORIZONTAL
1"=4' VERTICAL

1520 S Fifth Street Suite 306
St Charles, Missouri 63033
www.woodardcurran.com



REV	DESCRIPTION	DATE	CHECKED BY: ADL
1	ADDENDUM NO. 1	02/07/17	
	ISSUED FOR BID	01/18/17	

DESIGNED BY: ADL
DRAWN BY: JDE
CHECKED BY: ADL
DATE: 2/29/2016

MAIN STREET PLAN & PROFILE
STA. 0+00 TO STA. 10+00

CITY OF O'FALLON, MISSOURI
MAIN STREET
WATER MAIN REPLACEMENT

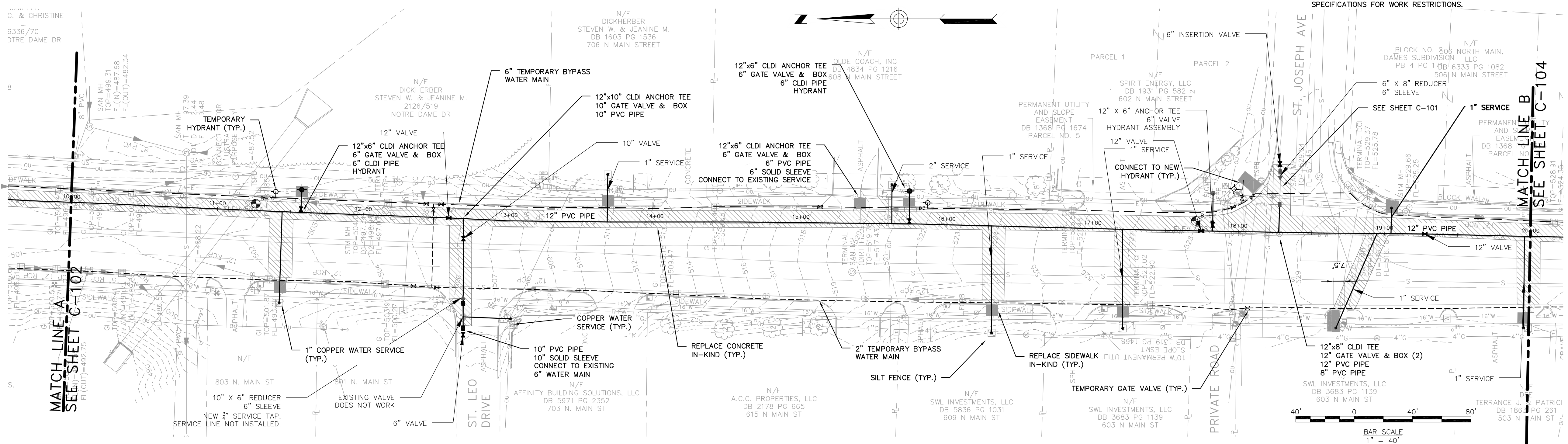
JOB NO.: 229790.00
DATE: JANUARY 2017
SCALE: 1"=40'
SHEET: 3 OF 12

C-102

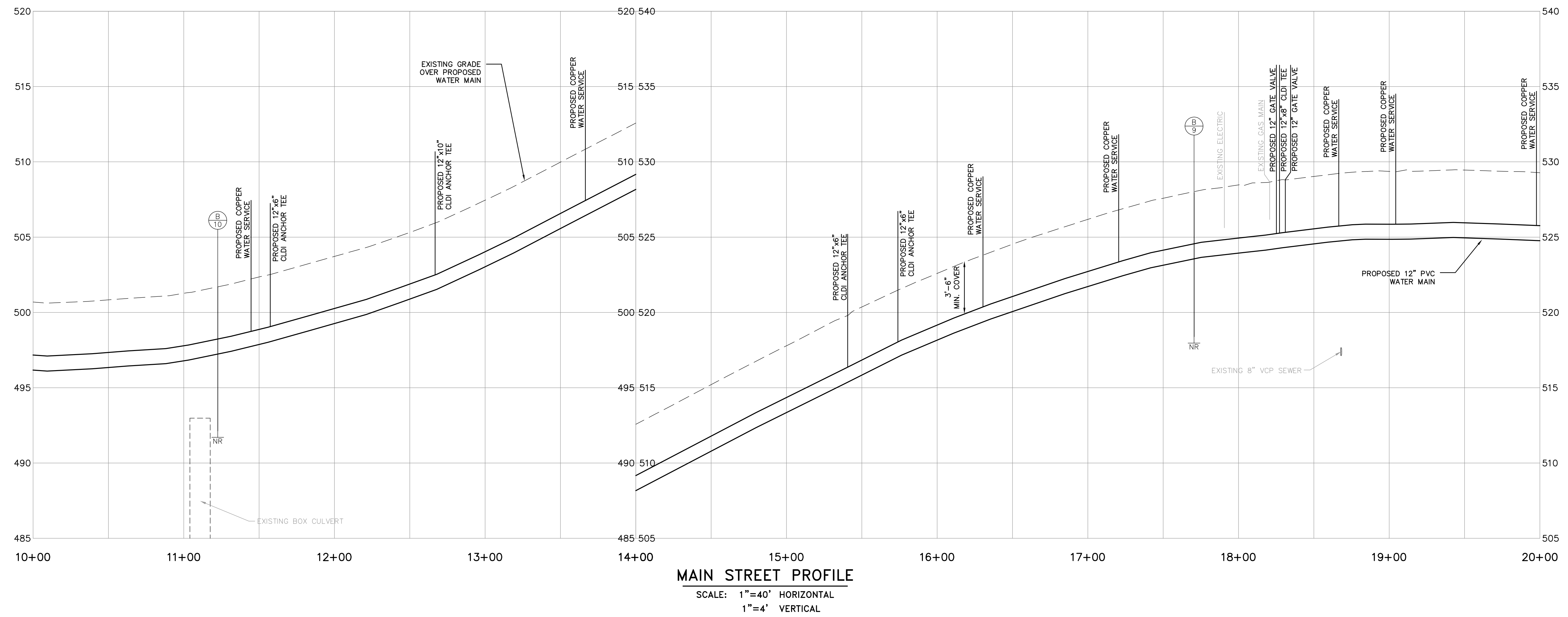
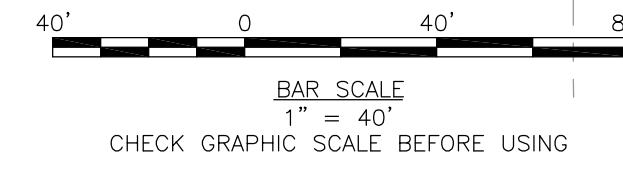
AS-BUILT

W:\woodardcurran.net\shared\Projects\229790_City of O'Fallon-2016 Water Main Replacement\wpb\CAD Drawings\As-Built\229790-0101-C102.dwg, Oct. 30, 2016 - 2:59pm

- NOTES:**
1. INSTALL TEMPORARY BYPASS WATER MAIN IN ACCORDANCE WITH SECTION 01 51 38 PRIOR TO BEGINNING CUT-IN WORK.
 2. COMPLETE ALL SERVICE CONNECTIONS TO TEMPORARY BYPASS PRIOR TO BEGINNING WORK.
 3. REPLACE CONCRETE PAVEMENT TO NEAREST JOINT IN ACCORDANCE WITH DETAIL SHEET C-202.
 4. REPLACE SIDEWALK IN ACCORDANCE WITH DETAIL SHEET C-202.
 5. REFER TO GENERAL REQUIREMENTS 28 - HOURS OF WORK IN SPECIFICATIONS FOR WORK RESTRICTIONS.



MAIN STREET PLAN
SCALE: 1"=40'



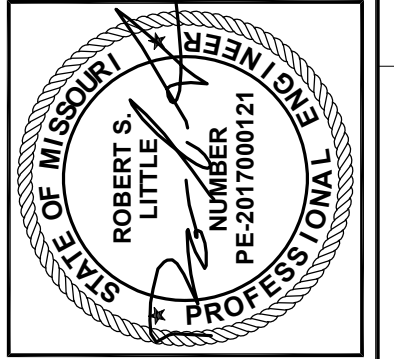
MAIN STREET PROFILE
SCALE: 1"=40' HORIZONTAL
1"=4' VERTICAL

1520 S Fifth Street Suite 306
St. Charles, Missouri 63303
www.woodardcurran.com

WOODARD & CURRAN

COMMITMENT & INTEGRITY DRIVE RESULTS

THIS DOCUMENT IS THE PROPERTY OF WOODARD & CURRAN, INC. AND ITS CLIENT. REPRODUCTION OR MODIFICATION WITHOUT WRITTEN PERMISSION IS PROHIBITED.



REVISION	DESCRIPTION	DATE	CHECKED BY: ADL
1	ADDENDUM NO. 1	02/07/17	
0	ISSUED FOR BID	01/18/17	

DESIGNED BY: ADL
DRAWN BY: JDE
2297900-C01-C107.dwg

MAIN STREET PLAN & PROFILE
STA. 10+00 TO STA. 20+00

CITY OF O'FALLON, MISSOURI

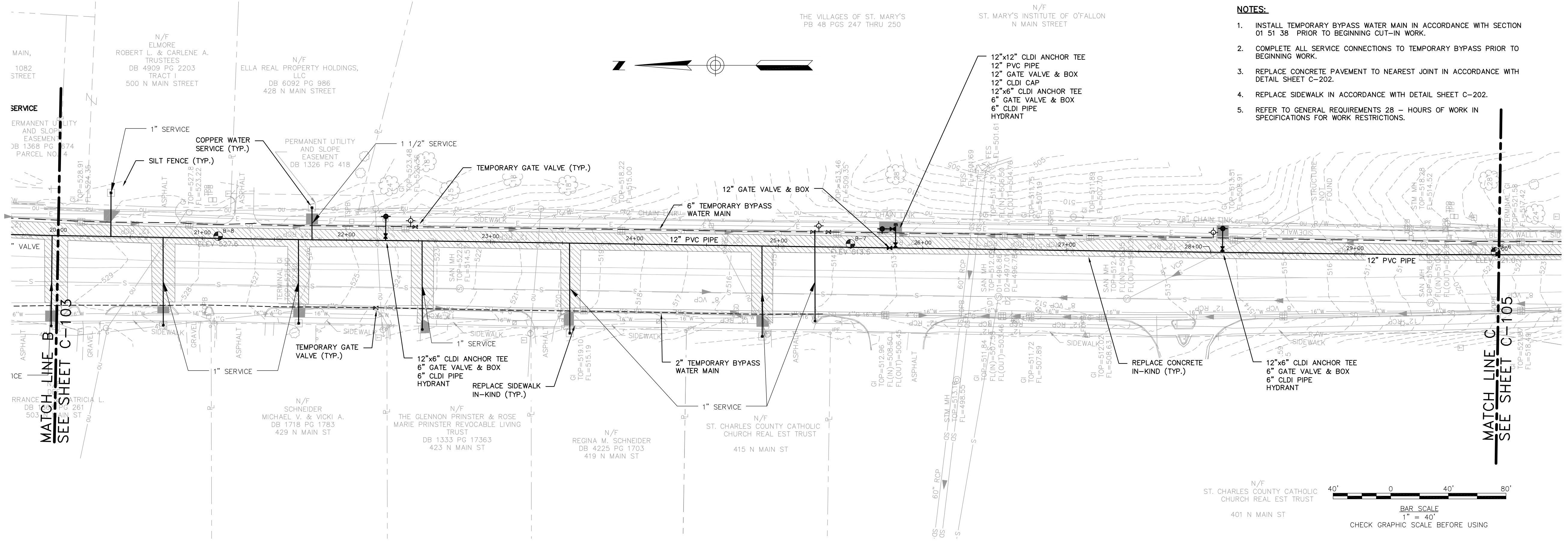
MAIN STREET WATER MAIN REPLACEMENT

JOB NO.: 229790.00
DATE: JANUARY 2017
SCALE: 1"=40'
SHEET: 4 OF 12

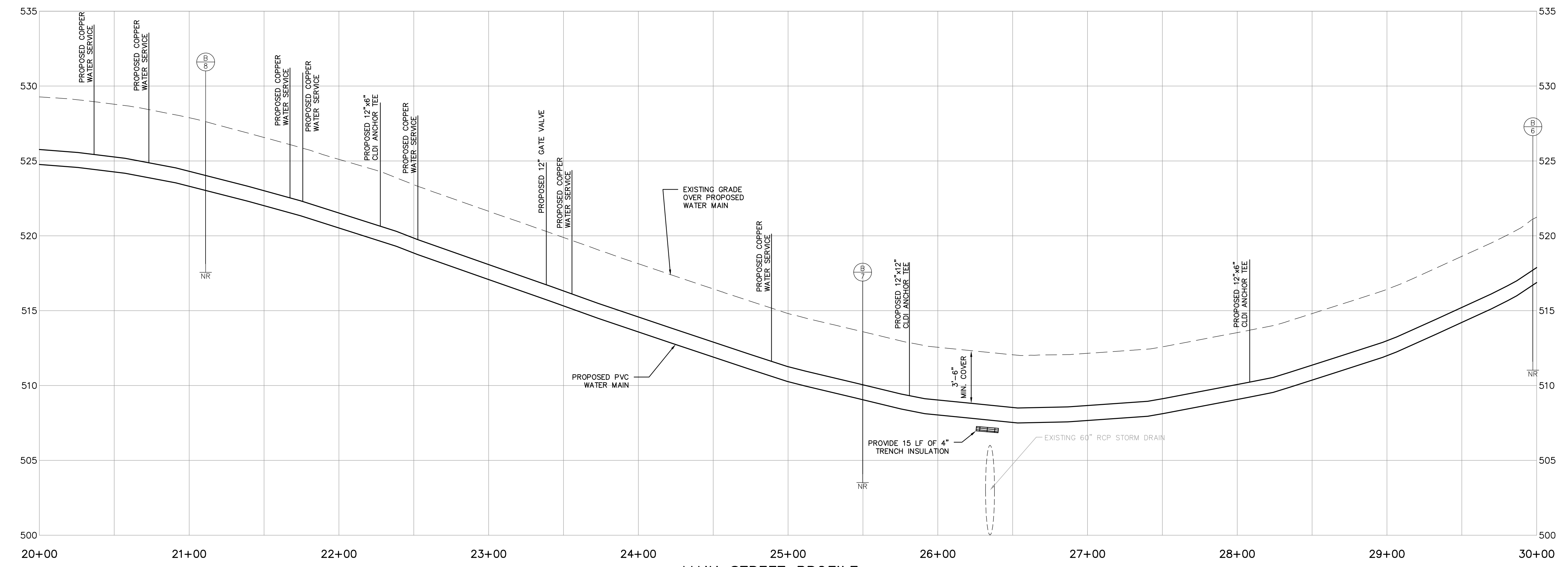
C-103

AS-BUILT

W:\woodardcurran.net\shared\Projects\2297900_City of O'Fallon-2016 Water Main Replacement\wp\CAD Drawings\As-Built\22979000-C101-C107.dwg, Oct. 30, 2018 - 2:59pm



MAIN STREET PLAN
SCALE: 1"=40'



MAIN STREET PROFILE
SCALE: 1"=40' HORIZONTAL
1"=4' VERTICAL

1520 S Fifth Street Suite 306
St. Charles, Missouri 63303
www.woodardcurran.com

WOODARD & CURRAN

COMMITMENT & INTEGRITY DRIVE RESULTS

THIS DOCUMENT IS THE PROPERTY OF WOODARD & CURRAN, INC. AND ITS CLIENT. REPRODUCTION OR MODIFICATION WITHOUT WRITTEN PERMISSION IS PROHIBITED.

STATE OF MISSOURI
ROBERT S. LITTLE
REGISTERED PROFESSIONAL ENGINEER
PE 2017000121

NO.	ADDENDUM NO.	ISSUED FOR	DATE	CHECKED BY
1	02/07/17	ADDENDUM NO. 1	02/07/17	ADL
0	01/18/17	ISSUED FOR BID	01/18/17	JDE

DESIGNED BY: ADL
DRAWN BY: JDE
22979000-C101_C107.dwg

MAIN STREET PLAN & PROFILE
STA. 20+00 TO STA. 30+00

CITY OF O'FALLON, MISSOURI

MAIN STREET WATER MAIN REPLACEMENT

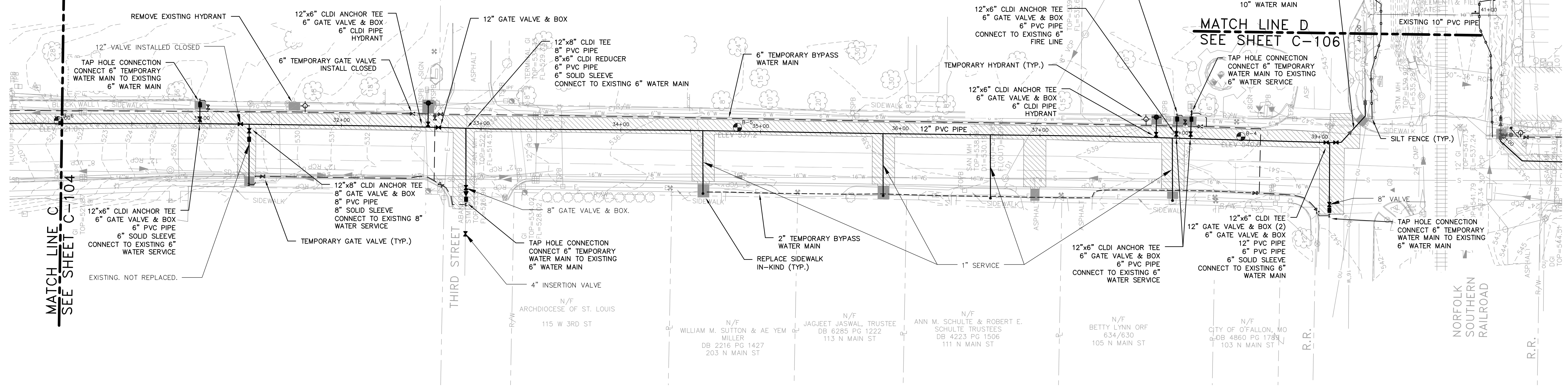
JOB NO.: 229790.00
DATE: JANUARY 2017
SCALE: 1"=40'
SHEET: 5 OF 12

C-104

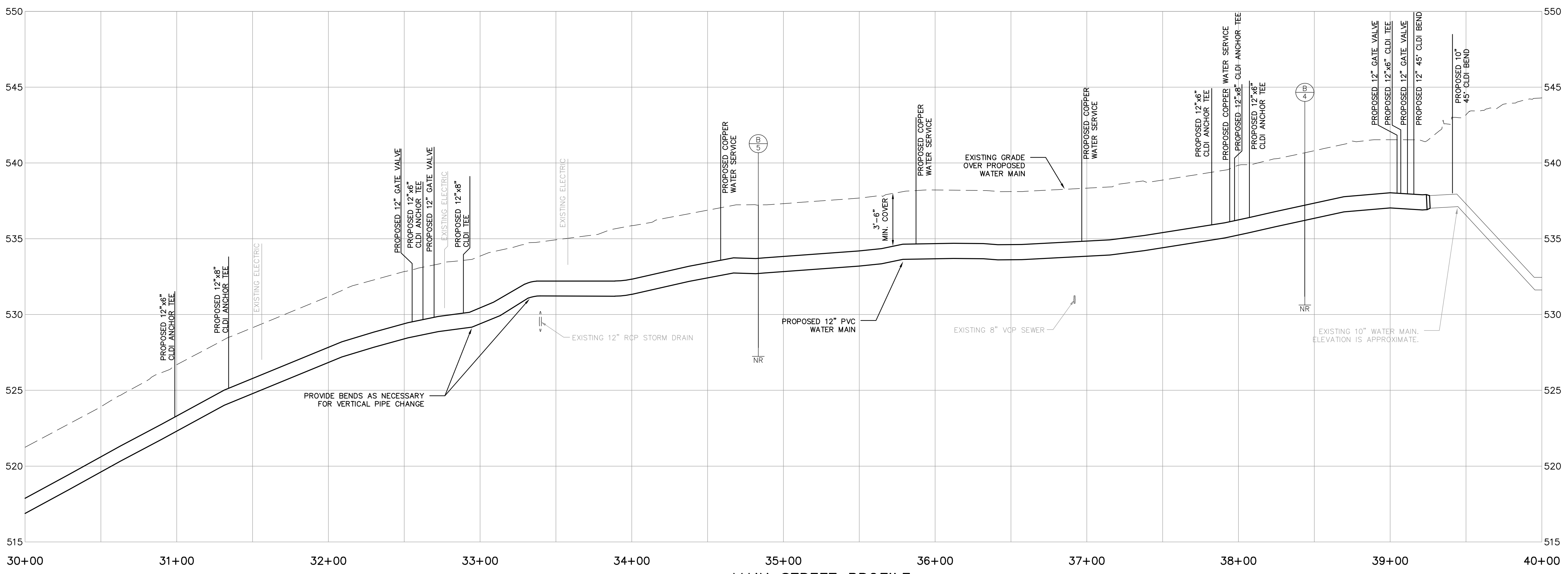
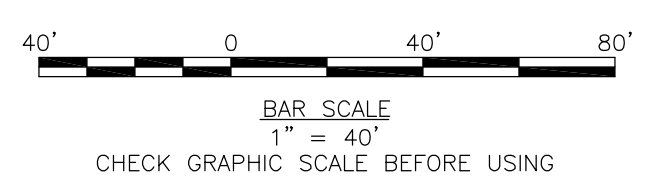
AS-BUILT

\\woodardcurran.net\shared\Projects\22979000-City of O'Fallon-2016 Water Main Replacement\wp\CAD Drawings\As-Built\C101_C107.dwg, Oct. 30, 2018 - 3:00pm

- NOTES:**
1. INSTALL TEMPORARY BYPASS WATER MAIN IN ACCORDANCE WITH SECTION 01 51 38 PRIOR TO BEGINNING CUT-IN WORK.
 2. COMPLETE ALL SERVICE CONNECTIONS TO TEMPORARY BYPASS PRIOR TO BEGINNING WORK.
 3. REPLACE CONCRETE PAVEMENT TO NEAREST JOINT IN ACCORDANCE WITH DETAIL SHEET C-202.
 4. REPLACE SIDEWALK IN ACCORDANCE WITH DETAIL SHEET C-202.
 5. REFER TO GENERAL REQUIREMENTS 28 - HOURS OF WORK IN SPECIFICATIONS FOR WORK RESTRICTIONS.



MAIN STREET PLAN
SCALE: 1"=40'



MAIN STREET PROFILE
SCALE: 1"=40' HORIZONTAL
1"=4' VERTICAL

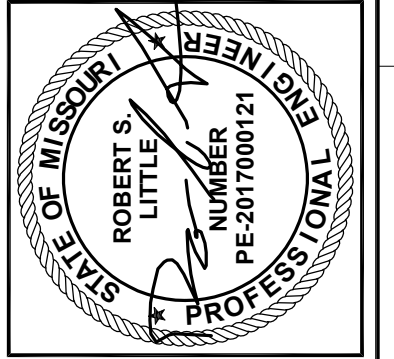
AS-BUILT

1520 S Fifth Street Suite 306
St. Charles, Missouri 63033
www.woodardcurran.com

WOODARD & CURRAN

COMMITMENT & INTEGRITY DRIVE RESULTS

THIS DOCUMENT IS THE PROPERTY OF WOODARD & CURRAN, INC. AND ITS CLIENT. REPRODUCTION OR MODIFICATION WITHOUT WRITTEN PERMISSION IS PROHIBITED.



REV.	DESCRIPTION	DATE	CHECKED BY: ADL
1	ADDENDUM NO. 1	02/07/17	
	ISSUED FOR BID	01/18/17	

DESIGNED BY: ADL
DRAWN BY: JDE
2297900P-C101_C107.dwg

MAIN STREET PLAN & PROFILE
STA. 30+00 TO STA. 40+00

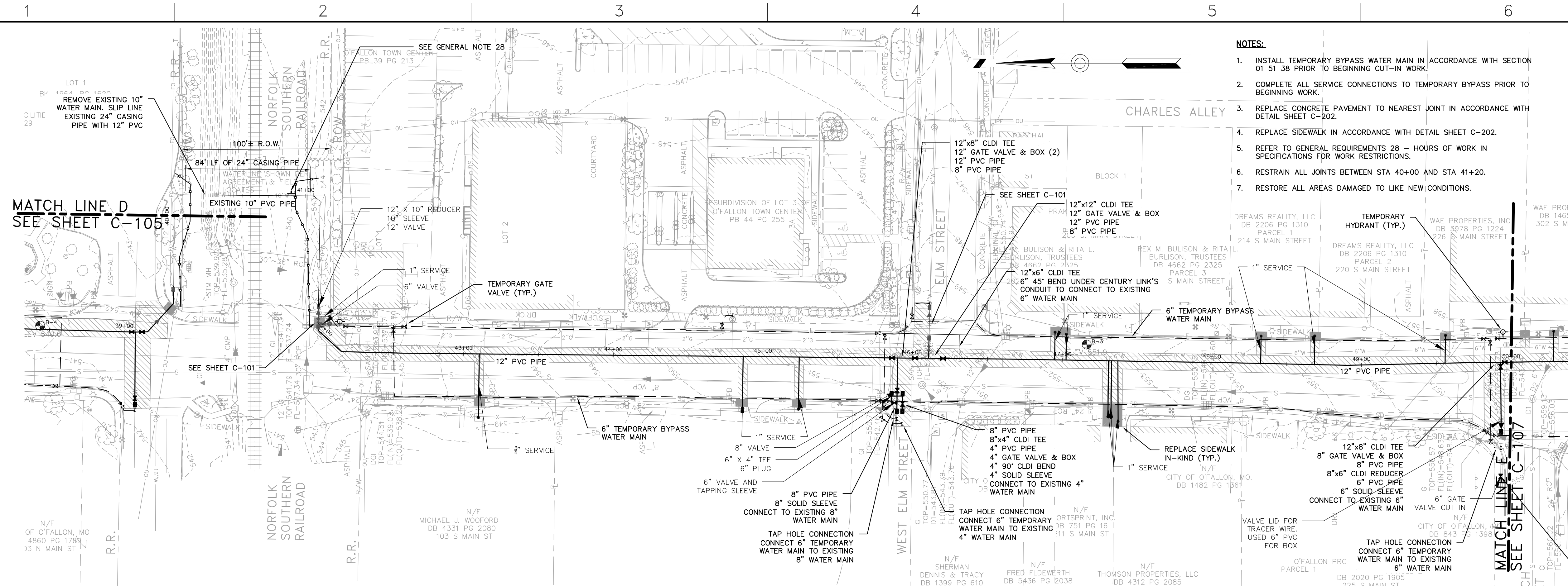
CITY OF O'FALLON, MISSOURI

MAIN STREET WATER MAIN REPLACEMENT

JOB NO.: 229790.00
DATE: JANUARY 2017
SCALE: 1"=40'
SHEET: 6 OF 12

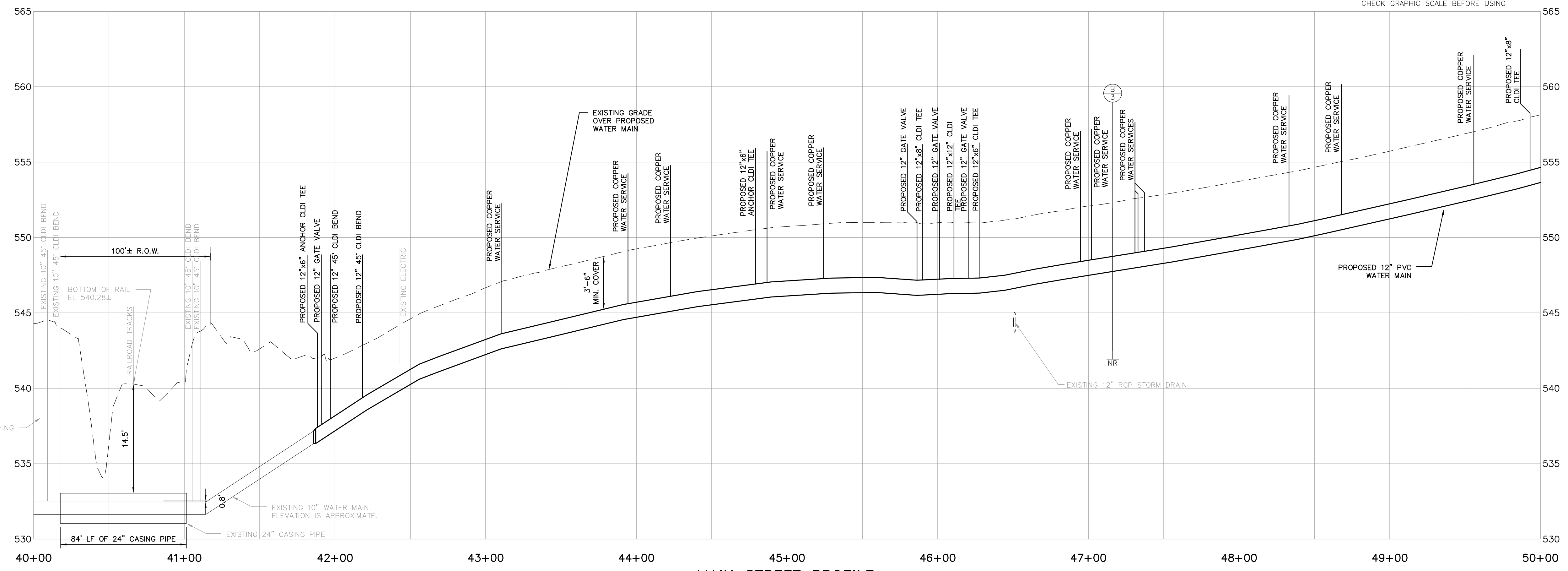
C-105

W:\woodardcurran.net\shared\Projects\229790 City of O'Fallon-2016 Water Main Replacement\wpb\CAD Drawings\As-Built\22979000-C101-C107.dwg, Oct. 30, 2018 - 3:00pm

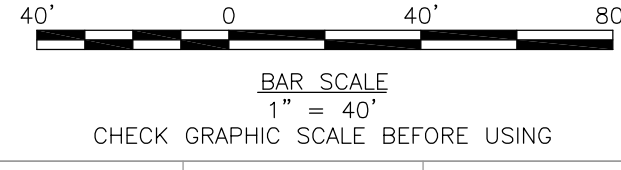


MAIN STREET PLAN
SCALE: 1"=40'

- NOTES:**
1. INSTALL TEMPORARY BYPASS WATER MAIN IN ACCORDANCE WITH SECTION 01 51 38 PRIOR TO BEGINNING CUT-IN WORK.
 2. COMPLETE ALL SERVICE CONNECTIONS TO TEMPORARY BYPASS PRIOR TO BEGINNING WORK.
 3. REPLACE CONCRETE PAVEMENT TO NEAREST JOINT IN ACCORDANCE WITH DETAIL SHEET C-202.
 4. REPLACE SIDEWALK IN ACCORDANCE WITH DETAIL SHEET C-202.
 5. REFER TO GENERAL REQUIREMENTS 28 - HOURS OF WORK IN SPECIFICATIONS FOR WORK RESTRICTIONS.
 6. RESTRAIN ALL JOINTS BETWEEN STA 40+00 AND STA 41+20.
 7. RESTORE ALL AREAS DAMAGED TO LIKE NEW CONDITIONS.



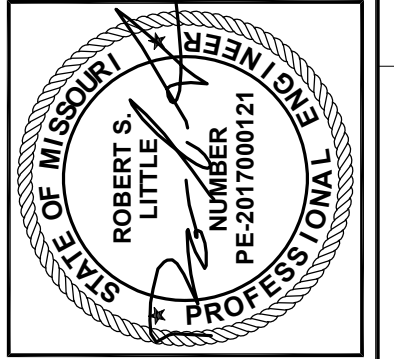
MAIN STREET PROFILE
SCALE: 1"=40' HORIZONTAL
1"=4' VERTICAL



1520 S Fifth Street Suite 306
St Charles, Missouri 63033
www.woodardcurran.com

WOODARD & CURRAN

COMMITMENT & INTEGRITY DRIVE RESULTS



REV	DESCRIPTION	DATE	CHECKED BY: ADL
1	ADDENDUM NO. 1	02/07/17	
	ISSUED FOR BID	01/18/17	

DESIGNED BY: ADL
DRAWN BY: JDE
22979000-C101-C107.dwg

MAIN STREET PLAN & PROFILE
STA. 40+00 TO STA. 50+00

CITY OF O'FALLON, MISSOURI

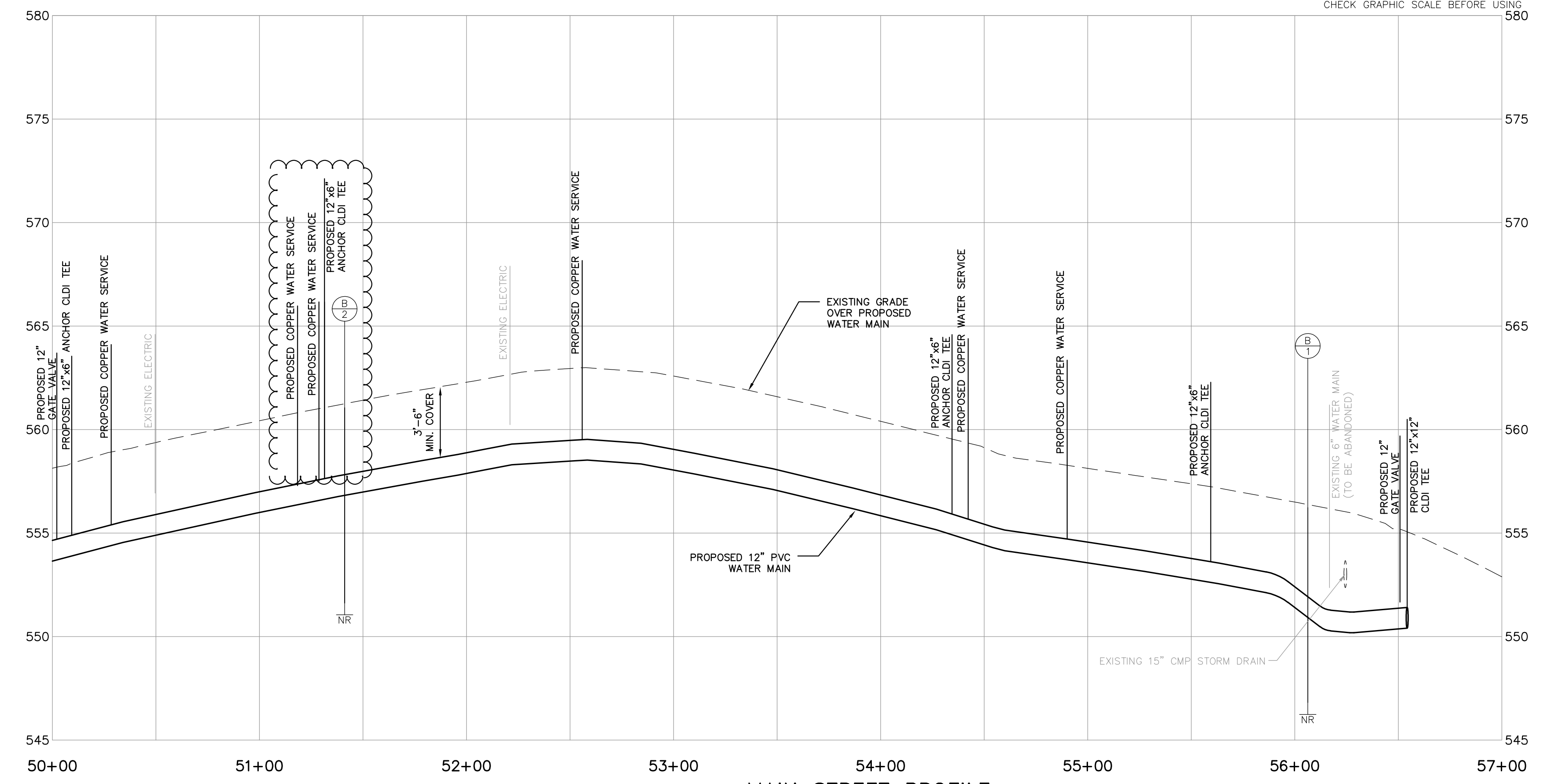
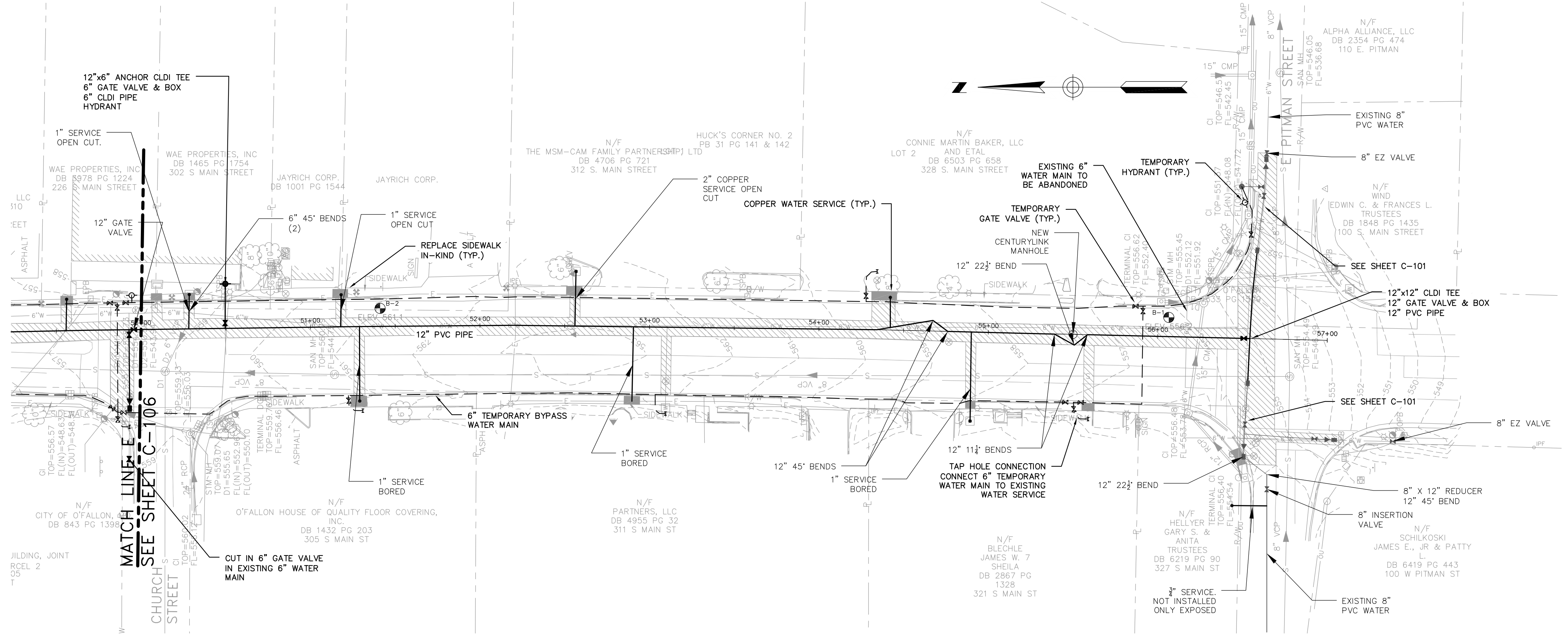
MAIN STREET WATER MAIN REPLACEMENT

JOB NO.: 229790.00
DATE: JANUARY 2017
SCALE: 1"=40'
SHEET: 7 OF 12

C-106

AS-BUILT

W:\woodardcurran.net\shared\Projects\229790_City of O'Fallon-2016 Water Main Replacement\wp\CAD Drawings\As-Built\22979000-C101-C107.dwg, Oct. 30, 2018 - 3:00pm



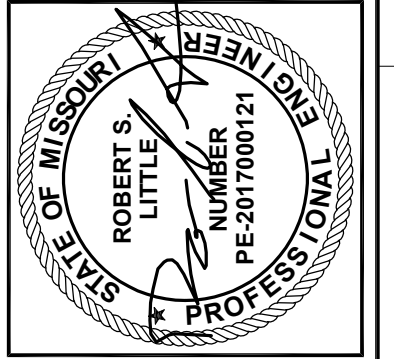
- NOTES:**
- INSTALL TEMPORARY BYPASS WATER MAIN IN ACCORDANCE WITH SECTION 01 51 38 PRIOR TO BEGINNING CUT-IN WORK.
 - COMPLETE ALL SERVICE CONNECTIONS TO TEMPORARY BYPASS PRIOR TO BEGINNING CUT-IN WORK.
 - PRE-EXCAVATE, SHORE AND PLATE CUT-IN WORK LOCATIONS TO MINIMIZE SHUT-DOWN TIME REQUIRED.
 - COORDINATE SHUT-DOWNS WITH OWNER. SUBMIT SCHEDULE TO OWNER AT LEAST 10 WORKING DAYS PRIOR TO BEGINNING WORK FOR REVIEW AND APPROVAL.
 - REPLACE CONCRETE PAVEMENT TO NEAREST JOINT IN ACCORDANCE WITH DETAIL SHEET C-202.
 - REPLACE SIDEWALK IN ACCORDANCE WITH DETAIL SHEET C-202.

1520 S Fifth Street Suite 306
St Charles, Missouri 63033
www.woodardcurran.com

WOODARD & CURRAN

COMMITMENT & INTEGRITY DRIVE RESULTS

THIS DOCUMENT IS THE PROPERTY OF WOODARD & CURRAN, INC. AND ITS CLIENT. REPRODUCTION OR MODIFICATION WITHOUT WRITTEN PERMISSION IS PROHIBITED.



NO.	DESCRIPTION	DATE	CHECKED BY: ADL
1	APPENDUM NO. 1	02/07/17	
0	ISSUED FOR BID	01/18/17	
REVISION	DESIGNER BY: ADL	CHECKED BY: ADL	
	DRAWN BY: JDE	22979000-C101_C107.dwg	

MAIN STREET PLAN & PROFILE
STA. 50+00 TO STA. 57+00

CITY OF O'FALLON, MISSOURI

MAIN STREET WATER MAIN REPLACEMENT

JOB NO.: 229790.00
DATE: JANUARY 2017
SCALE: 1"=40'
SHEET: 8 OF 12

C-107

AS-BUILT

D:\woodardcurran.net\shared\Projects\229790 City of O'Fallon-2016 Water Main Replacement\wpb\CAD Drawings\As-Built\22979000-C101-C107.dwg, Oct. 30, 2018 - 3:00pm