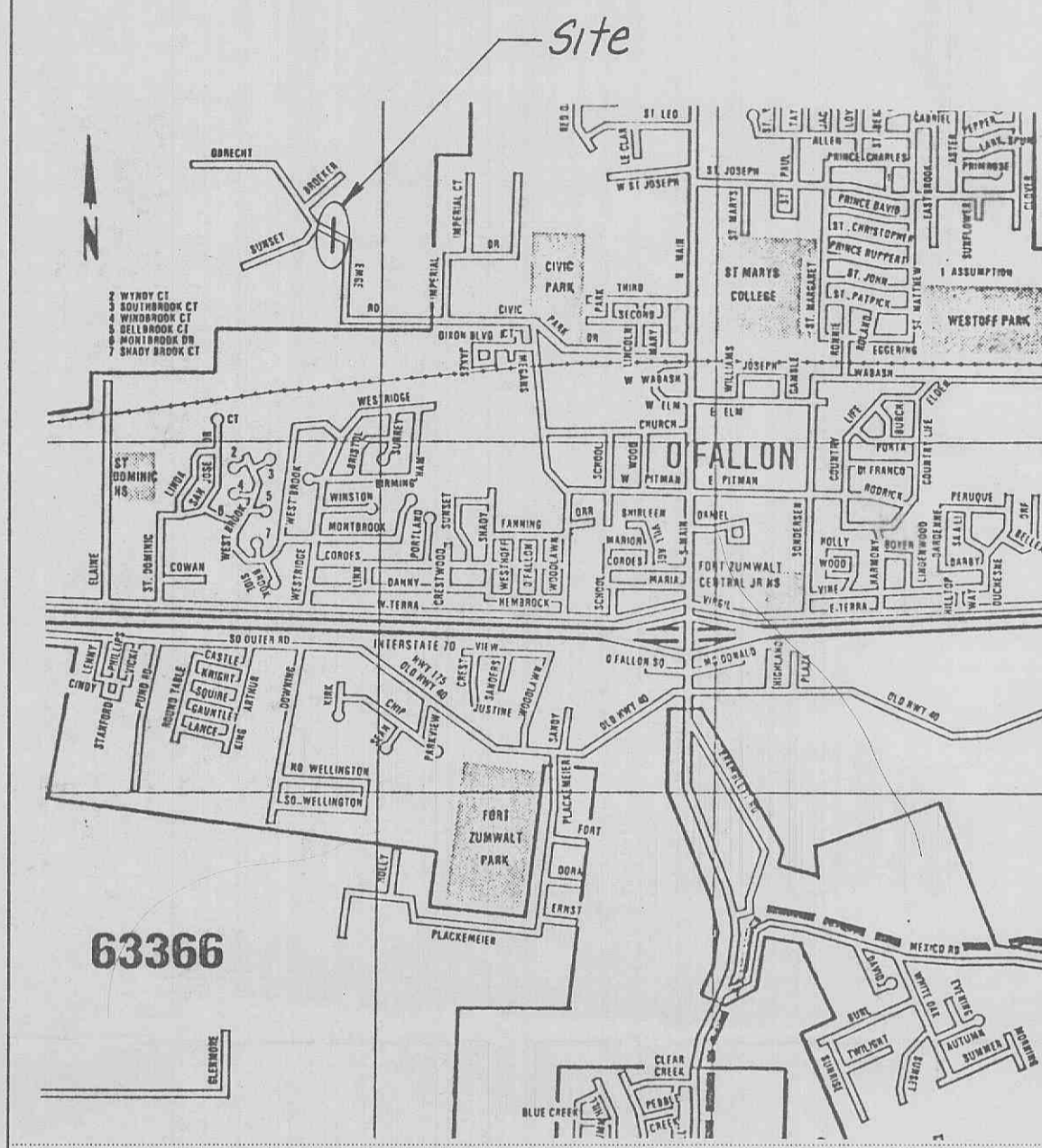
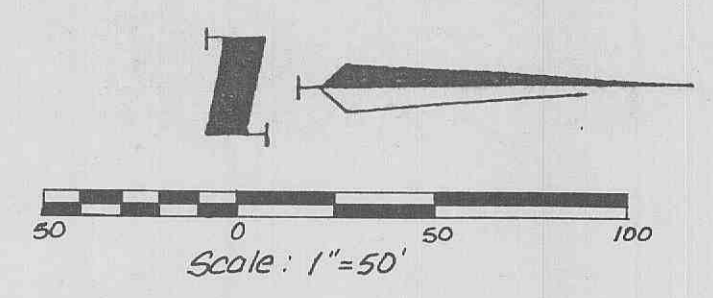


GBA

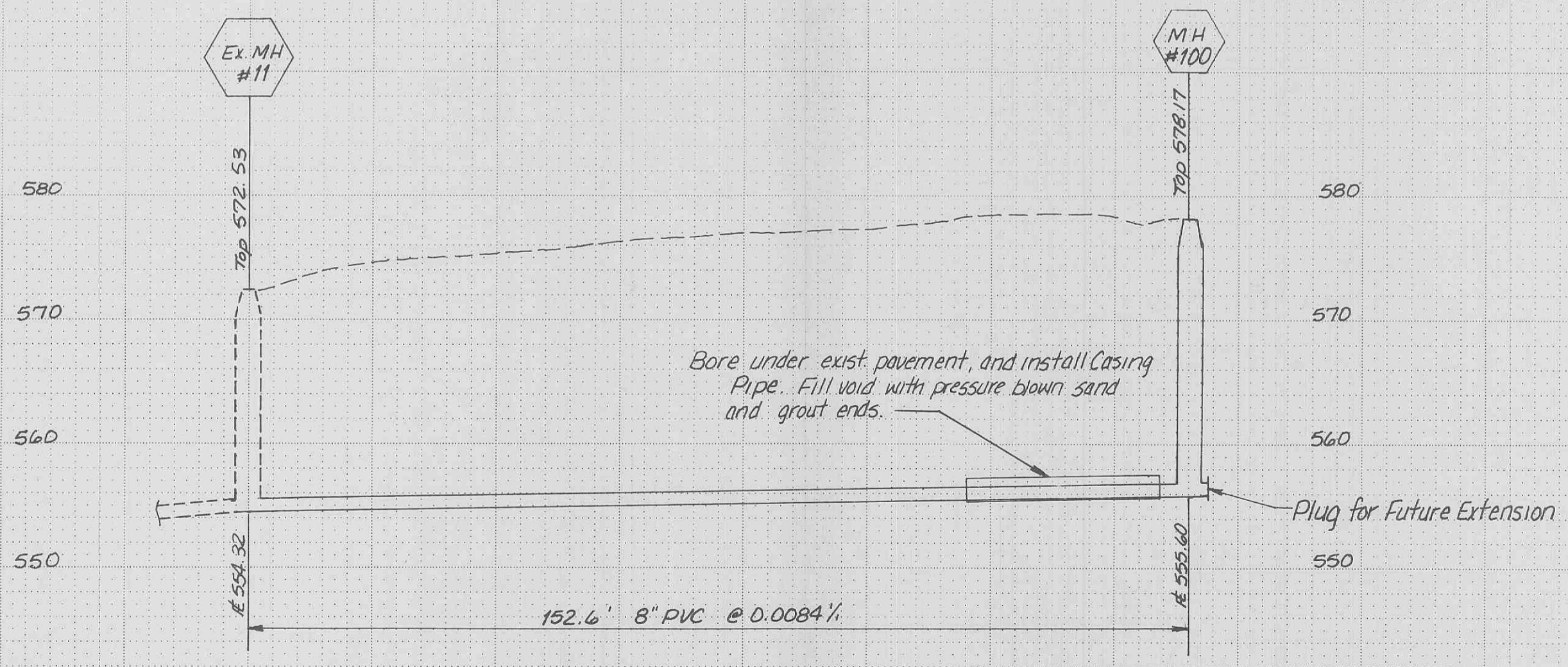
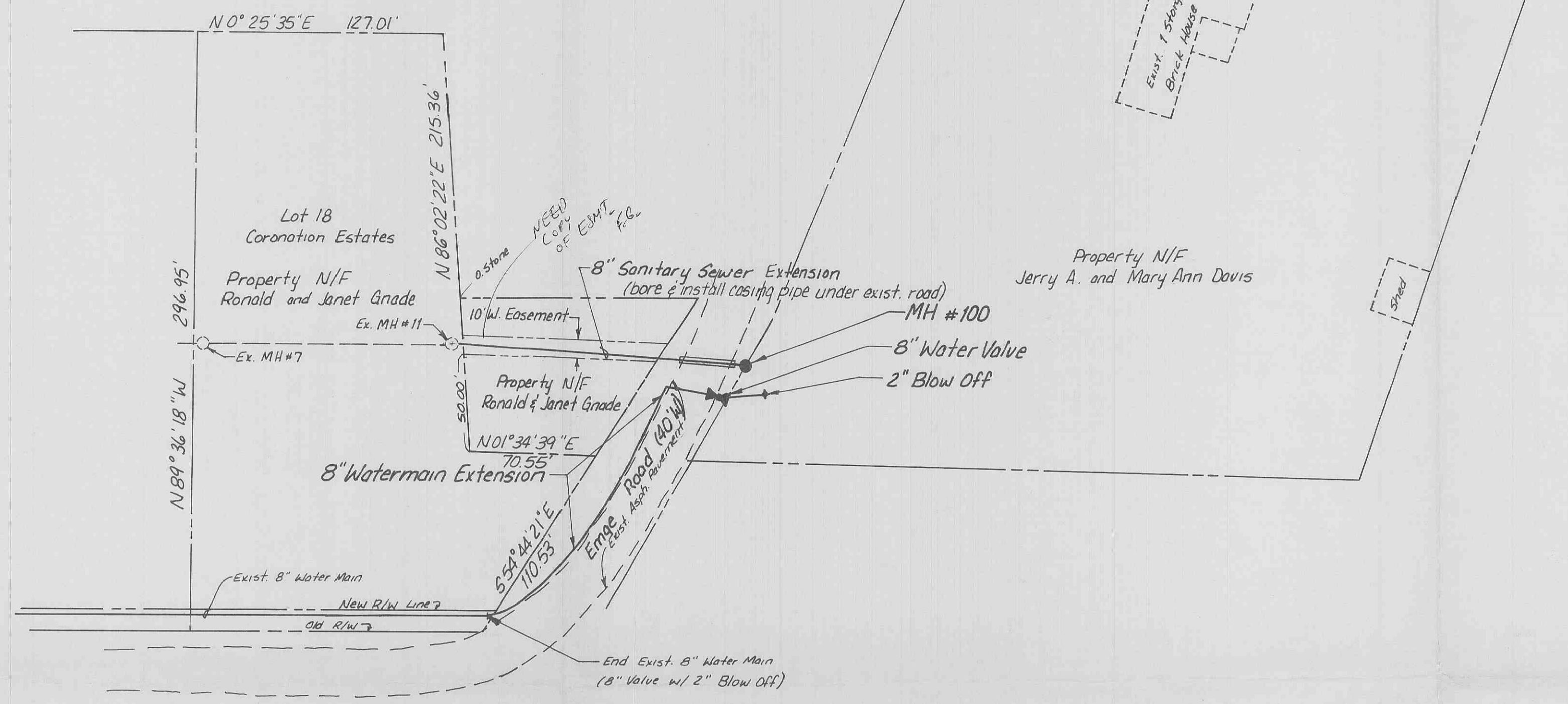
GEORGE BUTLER ASSOCIATES, INC.
Engineers / Architects / Landscape Architects / Planners

PROJECT	SHEET NO.	TOTAL SHEETS
Sanitary Sewer and Watermain Extension Across Emge Road	1	1
PROJECT NO.: 6396	DATE: 1/8/92	
REVISIONS:		

AS-BUILT PLANS
Maryridge Lot 10
Sanitary & Water



Location Map (n.t.s)



Note: The Contractor did not install a casing pipe with the waterline. The O'Fallon Building Department approved the installation contingent upon the void between the carrier pipe and the bored hole being filled with pressure blown sand.