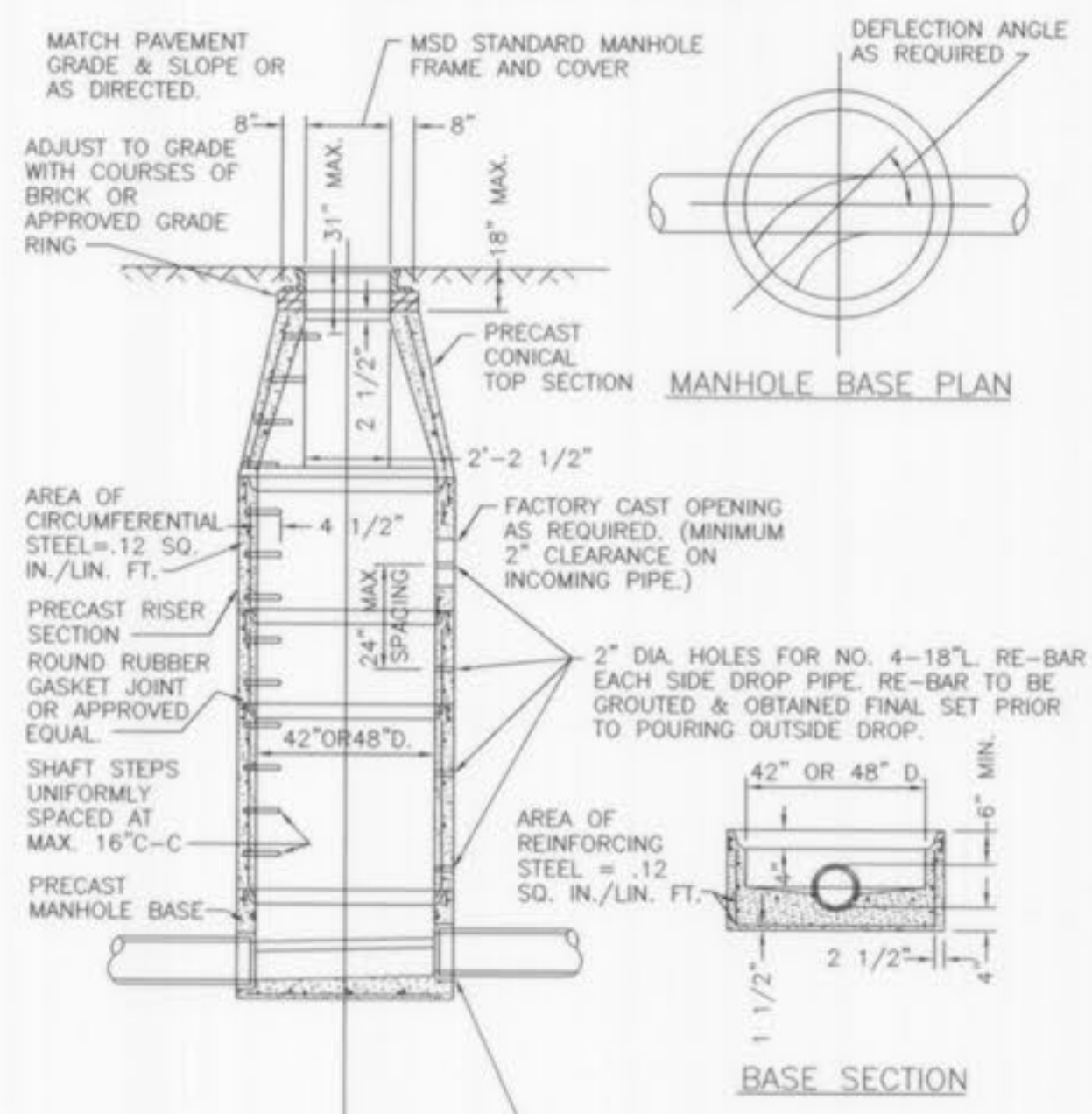
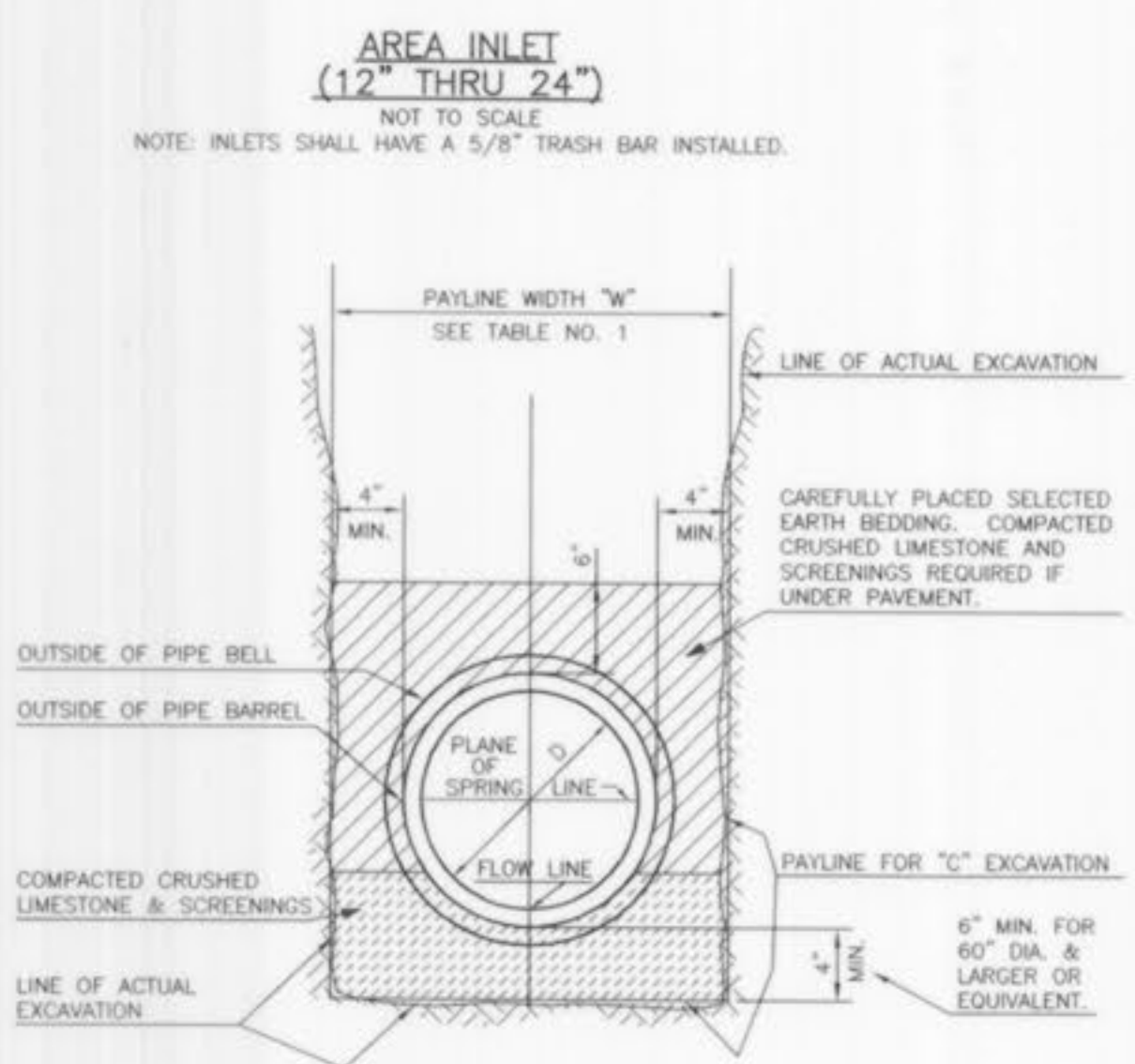


ROUND PIPE				HORIZONTAL ELLIPTICAL PIPE			
Inside Diameter of Pipe (Inches)	"W" Payline Width of Trench (Inches)	"W" Payline Width of Trench (Feet)	Pay-volumes cu. ft. per ft. Concrete Encasement	Inside Diameter of Pipe (Inches)	"W" Payline Width of Trench (Inches)	"W" Payline Width of Trench (Feet)	Pay-volumes cu. ft. per ft. Concrete Encasement
4	28	2.33	3.20				
6	28	2.33	3.46				
8	28	2.33	3.70				
10	28	2.33	3.86				
12	28	2.33	3.98				
15	32	2.67	4.89				
18	35	2.92	5.63	14 X 23	41	3.42	5.94
21	39	3.25	6.61				
24	42	3.50	7.39	19 X 30	49	4.08	7.68
27	45	3.75	8.18	22 X 34	53	4.42	8.61

TABLE NO. 1
 PAYLINE WIDTHS OF TRENCH AND
 PAY-QUANTITIES OF CONCRETE



PRE-CAST CONCRETE MANHOLE
 FOR SEWERS
 8" THROUGH 12"

GENERAL NOTES

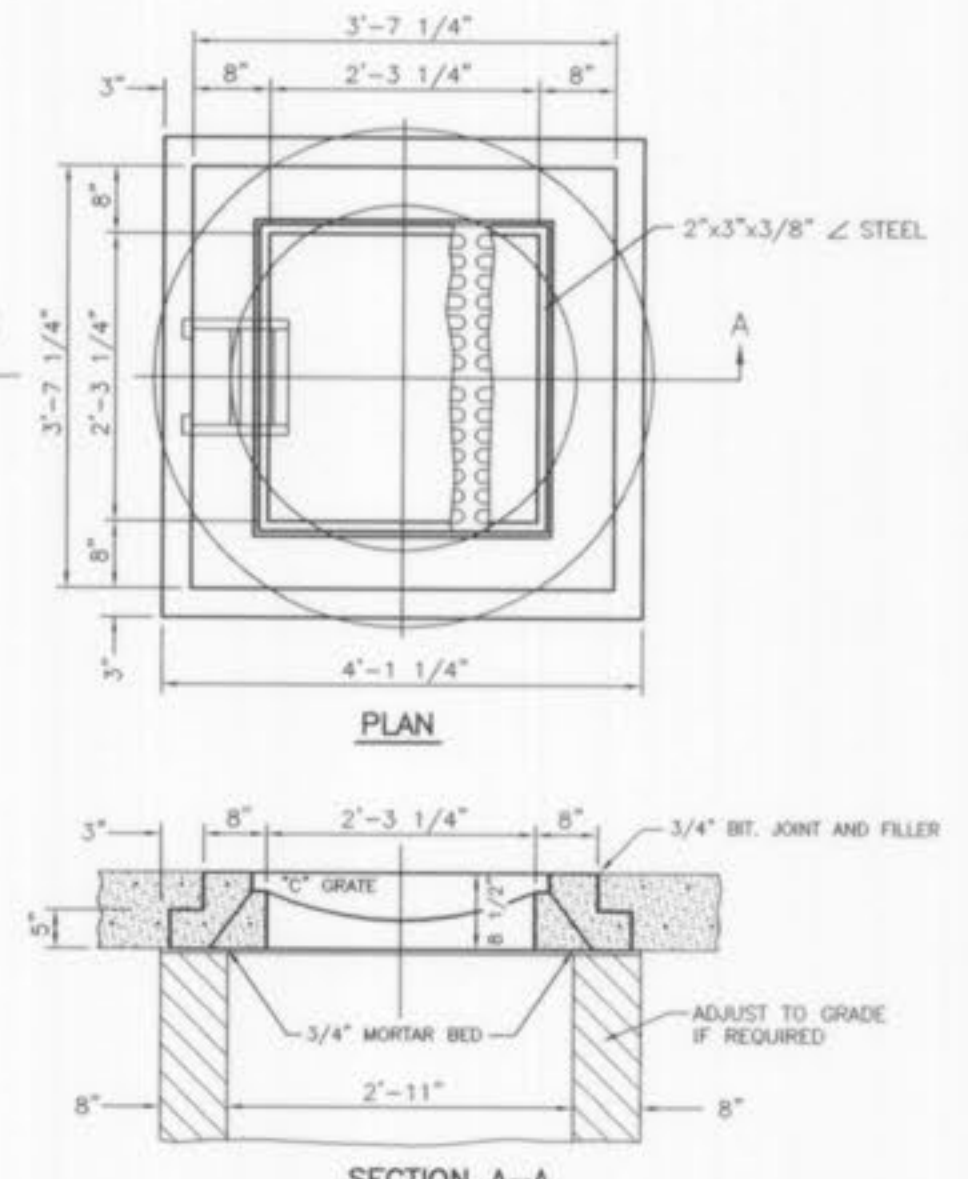
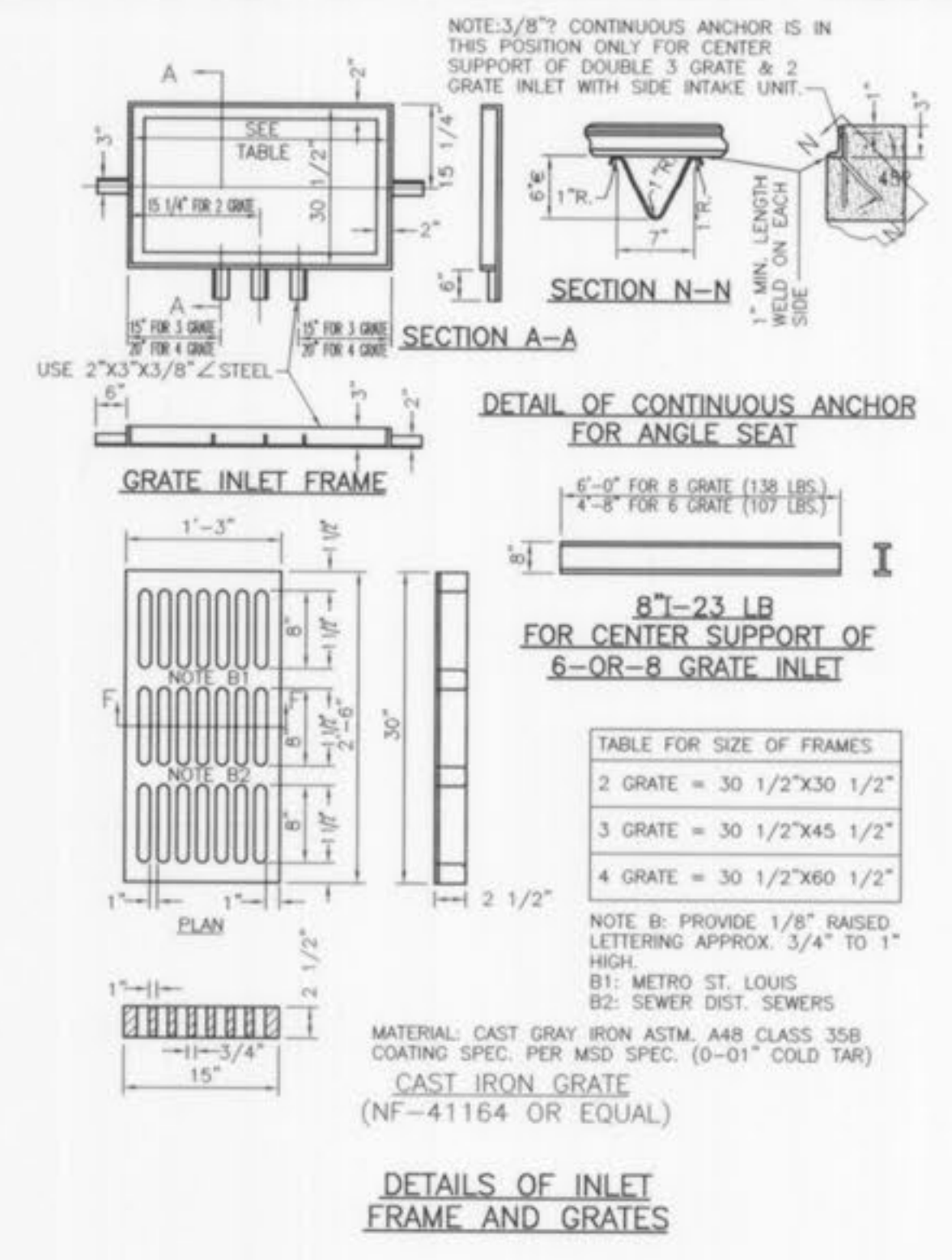
- 1) MANHOLE/POD BY CONTECH STORMWATER SOLUTIONS, PORTLAND, OR (800) 546-4667; SCARBOROUGH, ME (877) 907-0676; BANGOR, ME (207) 743-3310
- 2) CATCH BASIN INSERT TO BE ENVIROPOD OR APPROVED EQUAL. SUBMITTALS REQUIRED.
- 3) STANDARD MESH SIZE FOR SCREENING BAG RETAINS PARTICLES GREATER THAN 1,000 MICRONS. CONTACT CONTECH STORMWATER SOLUTIONS FOR ALTERNATE MESH SIZES. REPLACEMENT OIL ABSORBENT POUCHES INCLUDED.
- 4) CONCRETE CATCH BASIN, GRATE AND INLET AND OUTLET PIPING TO BE SPECIFIED BY ENGINEER AND PROVIDED BY CONTRACTOR.
- 5) STANDARD ENVIROPOD REQUIRED. 2" DROP FROM RIM TO INVERT OUT. IF INLET PIPING IS SPECIFIED, ENVIROPOD REQUIRED 2'-2" OF DROP FROM RIM TO CROWN OF INLET PIPE. CONTACT CONTECH STORMWATER SOLUTIONS FOR SPECIALTY APPLICATIONS.
- 6) ALL ENVIROPODS REQUIRE REGULAR MAINTENANCE. REFER TO OPERATION AND MAINTENANCE GUIDELINES FOR MORE INFORMATION.

ENVIROPOD - PLAN VIEW

ENVIROPOD - SECTION VIEW

MODEL	RATING	FLOW RATE (GPM)	WATER QUALITY	WATER QUALITY (GPM)	FR	HYDR	VEL	HEAD	VEL	HEAD	JUNC	TURN	LOSS	TQ	PIPE	CAP	REMARKS
ENVIPOD 1	1/2"	1.1	1.0	1.0	1.0	1.0	1.0	1.0	1.0	1.0	1.0	1.0	1.0	1.0	1.0	1.0	
ENVIPOD 2	3/4"	2.4	2.4	2.4	2.4	2.4	2.4	2.4	2.4	2.4	2.4	2.4	2.4	2.4	2.4	2.4	
ENVIPOD 3	1"	3.9	3.9	3.9	3.9	3.9	3.9	3.9	3.9	3.9	3.9	3.9	3.9	3.9	3.9	3.9	
ENVIPOD 4	1 1/2"	5.4	5.4	5.4	5.4	5.4	5.4	5.4	5.4	5.4	5.4	5.4	5.4	5.4	5.4	5.4	

ENVIROPOD CATCH BASIN INSERT - DROP IN UNIT
 PLAN AND SECTION VIEWS
 STANDARD DETAIL



BAX PROJECT NAME : BRANKO ADDITION - ASBUILT
 BAX PROJECT NO. : 94-6150A
 FILENAME: 6150a.asb

UPR STR	LOW STR	L	DIA	UPPER FL IN	LOWER FL IN	P5	UPPER ST EL	DEPTH HY GR	UPPER HY EL	LOWER HY EL	HYDR GRADE	FR HEAD	VEL	VEL HEAD	JUNC LOSS	TURN LOSS	TQ	PIPE CAP	REMARKS
A103	EXKAI	122	12	613.92	612.66	1.04	617.65	3.29	614.36*	613.66	.00170	0.20	1.86	0.05	0.05	0.00	1.46	3.63	1
G102	MH101	27	12	614.08	613.71	1.38	617.58	2.87	614.71	614.71	.00000	0.00	0.15	0.00	0.00	0.00	0.12	4.18	2
MH101	G1100	70	12	613.51	612.91	0.85	618.66	4.75	613.91	613.91	.00000	0.00	0.15	0.00	0.00	0.00	0.12	3.29	3
G1100	EXKAI	18	12	612.71	612.66	0.28	617.53	3.87	613.66	613.66	.00010	0.00	0.47	0.00	0.00	0.00	0.37	1.87	4
EXKAI	EXKCI	95	15	612.42	611.50	0.97	618.80	5.91	612.89	612.75	.00090	0.08	1.54	0.04	0.03	0.03	1.89	6.37	5 HB=612.75

* INDICATES CRITICAL DEPTH

