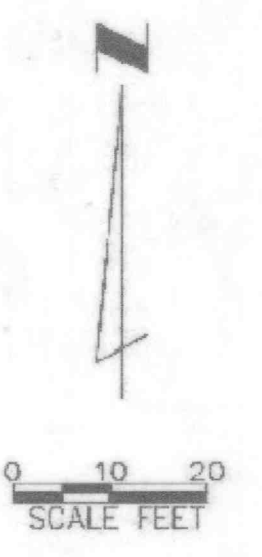
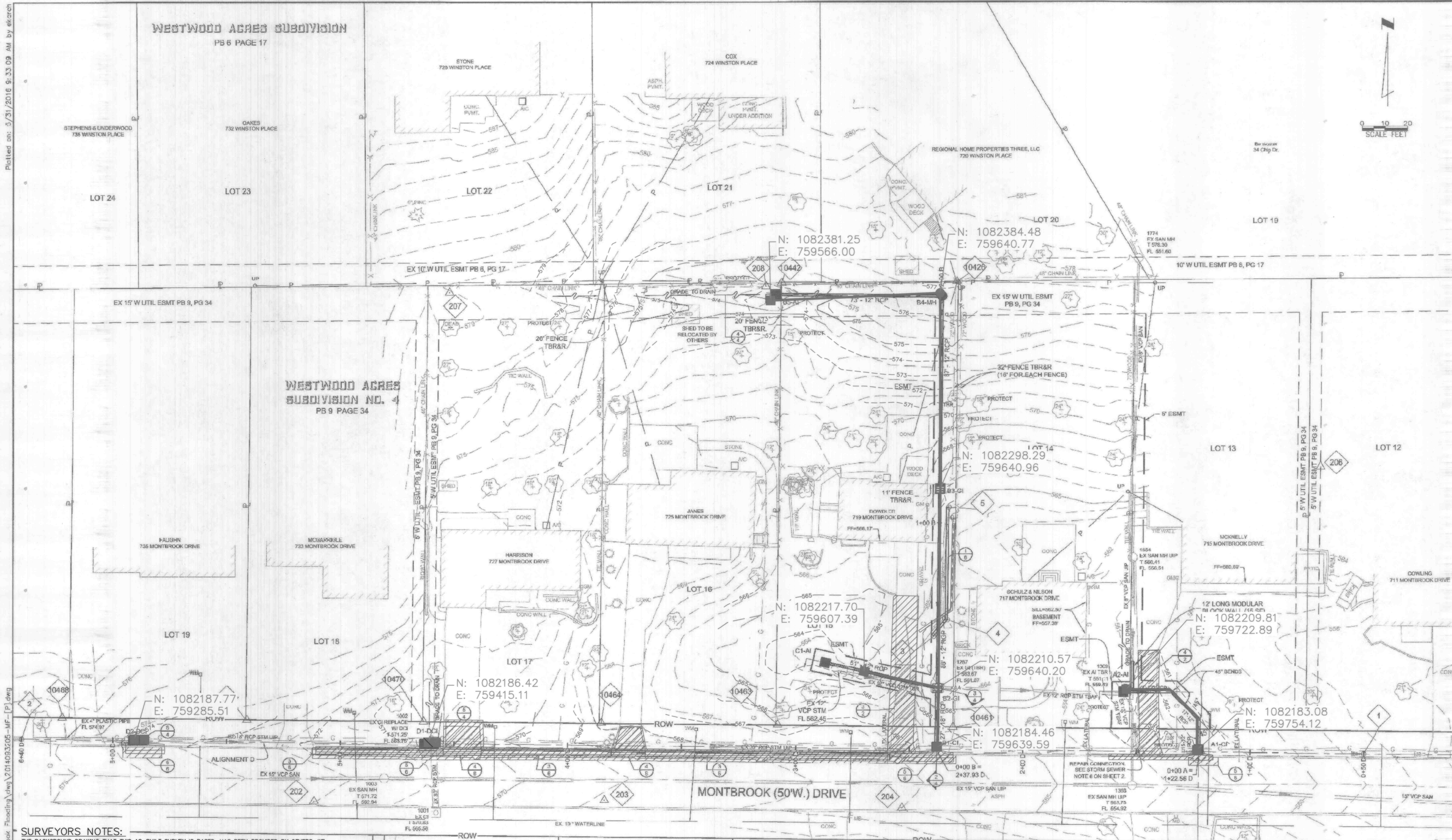


Plotted on: 3/31/2016 9:33:09 AM by ekrcen

WESTWOOD ACRES SUBDIVISION

PB 6 PAGE 17



Path: P:\OFFALLON-MO\2014093205-Montbrook_Flooding.dwg 2/14/2016 10:03:20 AM MF [P] dwg

SURVEYORS NOTES:
THE BACKGROUND DRAWING THAT THIS AS-BUILT SURVEY IS BASED, HAS BEEN PROVIDED BY OTHERS. WE HAVE ADDED AS-BUILT SEWER INFORMATION TO THIS DRAWING FROM FIELD OBSERVATIONS AND ONLY CLAIM RESPONSIBILITY OF ACCURACY AND INFORMATION FOR THE AS-BUILT DATA REPORTED HEREON.

ELEVATIONS AND STATE PLANE COORDINATE VALUES SHOWN ARE ON U.S.G.S. DATUM AND HAVE BEEN DERIVED FROM GPS OBSERVATION USING THE MISSOURI DEPARTMENT OF TRANSPORTATION'S GNSS VRS NETWORK, WGS 84, NAVD 88.

STORM AND SANITARY SEWER MEASUREMENTS
THE EXISTING SEWER LENGTHS, SIZES, FLOWLINES, DEPTHS OF STRUCTURES AND SEWERS, AND LOCATIONS WITH RESPECT TO EXISTING OR PROPOSED EASEMENTS HAVE BEEN MEASURED. THE RESULTS OF THESE MEASUREMENTS ARE SHOWN ON THIS SET OF FINAL MEASUREMENT PLATS. SINCE THE WYE LOCATIONS HAVE BEEN PLOTTED FROM INFORMATION PROVIDED BY THE SEWER CONTRACTOR OR OTHER SOURCES, I DISCLAIM ANY RESPONSIBILITY FOR THAT SPECIFIC INFORMATION.

ALL STRUCTURES AS SHOWN ON THIS AS-BUILT PLAN THAT ARE ON PRIVATE PROPERTY ARE PRIVATE. ALL STRUCTURES IN THE STREET RIGHT OF WAY AND THE METROLINK PROPERTY ARE PUBLIC.

GATEWAY LAND SERVICES, INC. (AGENT) DATE: DECEMBER 14, 2016

SIGNED: *Lee C. Ferrenbach III*
(AGENT) LEE C. FERRENBACH III PLS - 2310
VICE PRESIDENT



Lee C. Ferrenbach III, PLS.
License No: PLS-2310



ERIC K. REITZ
PROFESSIONAL ENGINEER
P.E. No. PE 000000000
Date:

THE ENGINEER AND PERSONAL SEERSON ASSUMES RESPONSIBILITY ONLY FOR WHAT IS SHOWN ON THIS PAGE AND DISCLAIMS ALL OTHER RESPONSIBILITY FOR THE PLANS, SPECIFICATIONS, ESTIMATES, REPORTS, DOCUMENTS OR INFORMATION NOT SEALED BY THE ENGINEER. RELIANCE INTENDED TO BE PART OR PARTS OF WHICH THIS PART

REITZ & JENS, INC.
CONSULTING ENGINEERS
1000 CORPORATE SQUARE DRIVE
ST. LOUIS, MISSOURI 63102

City of O'Fallon MO

City of O'Fallon MO
Montbrook Drive Storm Water

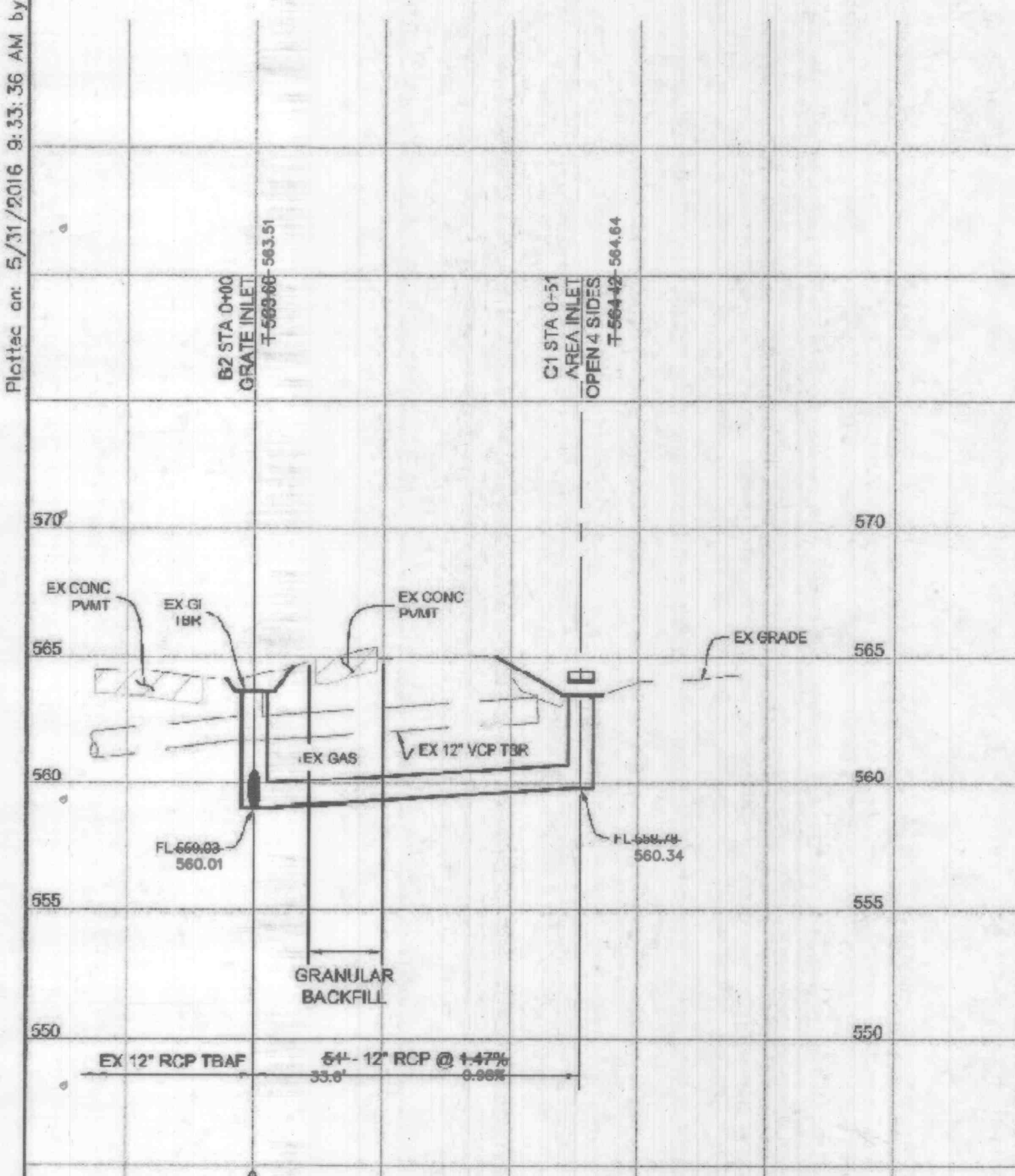
REVISIONS

SHEET

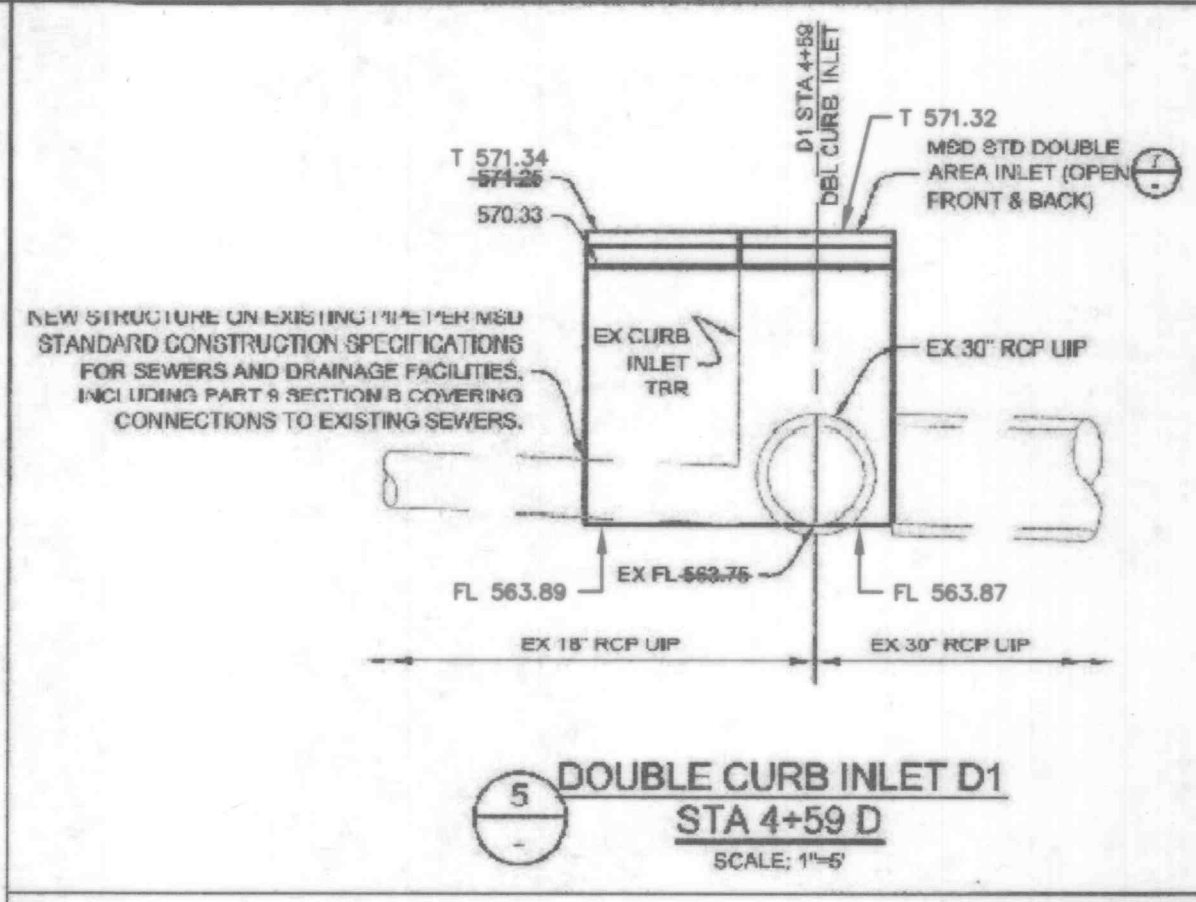
BEFORE YOU DIG - DRILL - BLAST
1-800-344-7483
(TOLL FREE)
MISSOURI ONE CALL SYSTEM, INC.

THIS ALIGNMENT AND LOCATIONS OF THIS DRAWING IS ON FILE AT THE OFFICE OF REITZ & JENS, INC. THE ORIGINAL AND BEST COPY OF THIS OFFICIAL DOCUMENT AND SHALL BE PRESERVED IN CONFORMITY WITH THE ORIGINAL.

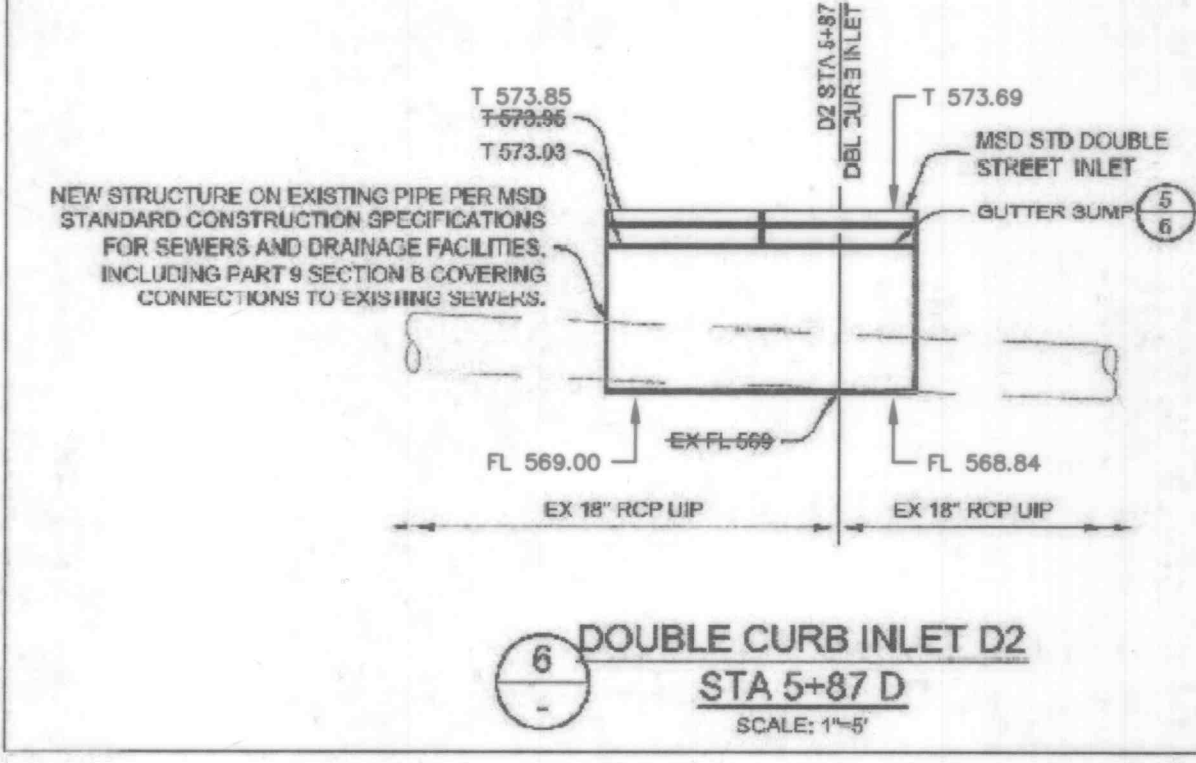
Plotfile: cr: 5/31/2016 9:33:36 AM by ekorch



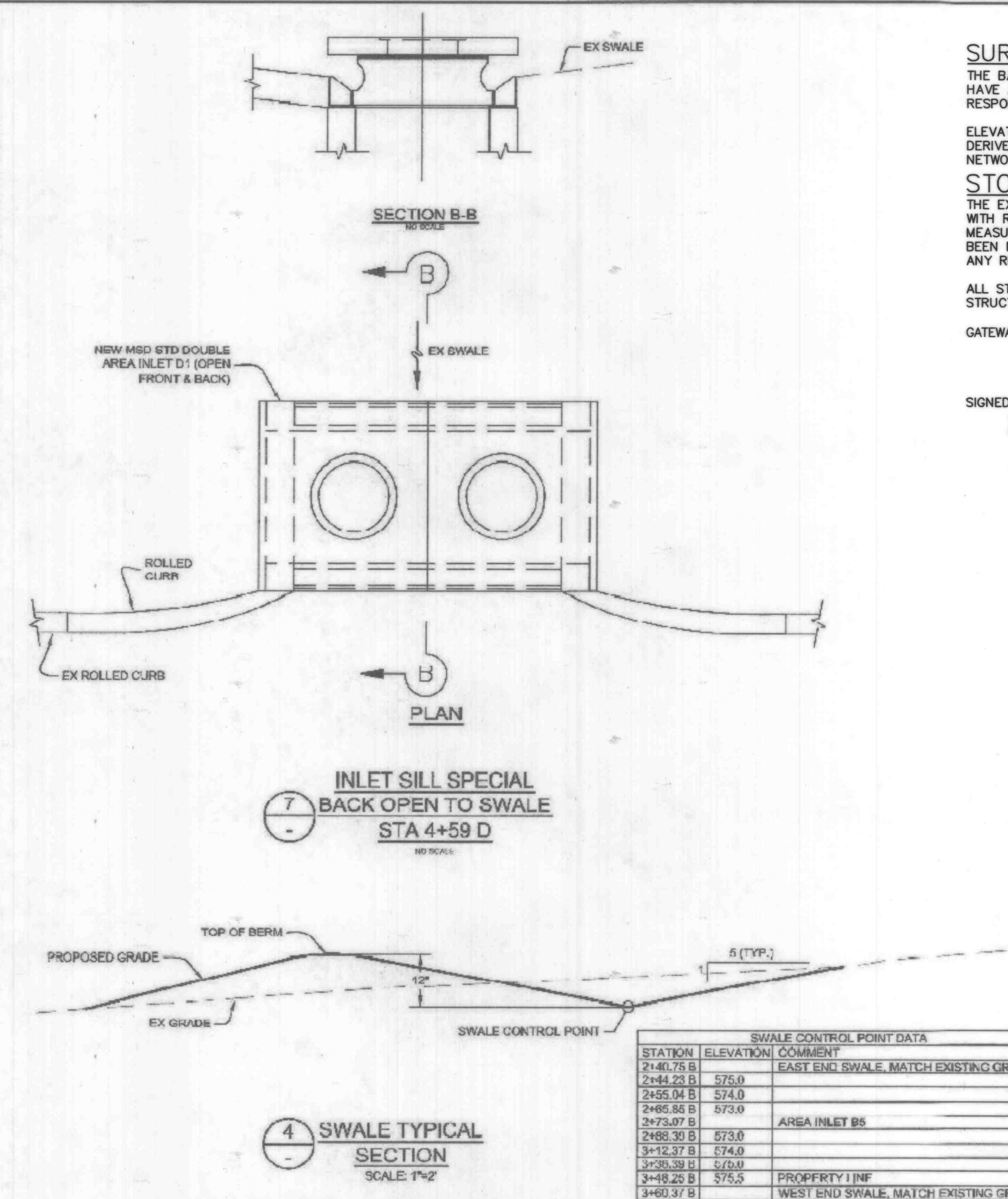
3 PROFILE C
SCALE: 1" = 20' H
1" = 5' V



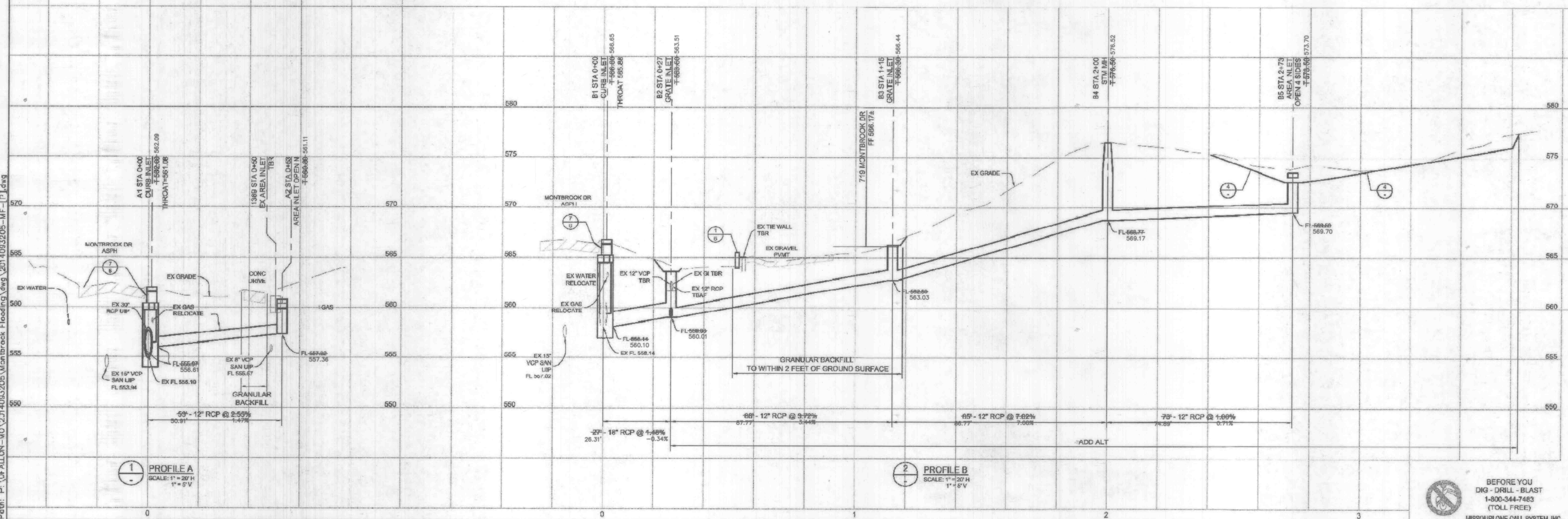
5 DOUBLE CURB INLET D1
STA 4+59 D
SCALE: 1"=6'



6 DOUBLE CURB INLET D2
STA 5+87 D
SCALE: 1"=6'



7 INLET SILL SPECIAL
BACK OPEN TO SWALE
STA 4+59 D
SCALE: 1"=2'



1 PROFILE A
SCALE: 1" = 20' H
1" = 5' V

2 PROFILE B
SCALE: 1" = 20' H
1" = 5' V

SURVEYORS NOTES:
THE BACKGROUND DRAWING THAT THIS AS-BUILT SURVEY IS BASED, HAS BEEN PROVIDED BY OTHERS. WE HAVE ADDED AS-BUILT SEWER INFORMATION TO THIS DRAWING FROM FIELD OBSERVATIONS AND ONLY CLAIM RESPONSIBILITY OF ACCURACY AND INFORMATION FOR THE AS-BUILT DATA REPORTED HEREON.
ELEVATIONS AND STATE PLANE COORDINATE VALUES SHOWN ARE ON U.S.G.S. DATUM AND HAVE BEEN DERIVED FROM GPS OBSERVATION USING THE MISSOURI DEPARTMENT OF TRANSPORTATION'S GNSS VRS NETWORK, WGS 84, NAVD 88.
STORM AND SANITARY SEWER MEASUREMENTS
THE EXISTING SEWER LENGTHS, SIZES, FLOWLINES, DEPTHS OF STRUCTURES AND SEWERS, AND LOCATIONS WITH RESPECT TO EXISTING OR PROPOSED EASEMENTS HAVE BEEN MEASURED. THE RESULTS OF THOSE MEASUREMENTS ARE SHOWN ON THIS SET OF FINAL MEASUREMENT PLATS. SINCE THE WYE LOCATIONS HAVE BEEN PLOTTED FROM INFORMATION PROVIDED BY THE SEWER CONTRACTOR OR OTHER SOURCES, I DISCLAIM ANY RESPONSIBILITY FOR THAT SPECIFIC INFORMATION.
ALL STRUCTURES AS SHOWN ON THIS AS-BUILT PLAN THAT ARE ON PRIVATE PROPERTY ARE PRIVATE. ALL STRUCTURES IN THE STREET RIGHT OF WAY AND THE METROLINK PROPERTY ARE PUBLIC.

GATEWAY LAND SERVICES, INC. (AGENT) DATE: DECEMBER 14, 2016
SIGNED: *Lee C. Ferrenbach III*
(AGENT) LEE C. FERRENBACH III PLS - 2310 VICE PRESIDENT
STATE OF MISSOURI
LEE C. FERRENBACH III
NUMBER PLS-2310
PROFESSIONAL LAND SURVEYOR
Lee C. Ferrenbach III, PLS
License No: PLS-2310

Engineer Seal
STATE OF MISSOURI
ERIC KARCH
NUMBER PE 2007006040
DATE 5/27/16
ERIC KARCH, P.E.
PROFESSIONAL ENGINEER
P.E. No. PE-2007006040
Date: 5/27/16

IF THE ENGINEER WHOSE SIGNATURE AND PERSONAL SEAL APPEAR HEREON ASSUMES RESPONSIBILITY ONLY FOR WHAT APPEARS ON THIS PAGE AND DISCLAIMS (PURSUANT TO SECTION 327.411 RSMO) ANY RESPONSIBILITY FOR ALL OTHER PLANS, SPECIFICATIONS, ESTIMATES, REPORTS OR OTHER DOCUMENTS OR INSTRUMENTS NOT SEALED BY THE UNDERSIGNED ENGINEER RELATING TO OR INTENDED TO BE USED FOR ANY PART OR PARTS OF THE PROJECT TO WHICH THIS PAGE REFERS.

REITZ & JENS, INC.
CONSULTING ENGINEERS
1055 S. BRUNNEN W. SUITE 100
ST. LOUIS, MISSOURI 63105
(314) 982-4128
PROFESSIONAL ENGINEERING CORP. LICENSE 0000211

Checked: J.M.K.
Designed: D.L.B.
Drawn: J.M.E.
Revised: MAY 27, 2015

City of O'Fallon MO
100 North Main St.
O'Fallon, MO 63366
636.240.2000

City of O'Fallon MO
Montbrook Drive Storm Water Improvements Profiles
CITY OF OF-FALLON PROJECT # 15-002 C R&I PROJECT# 201-4092035

REVISIONS

BEFORE YOU DIG - DRILL - BLAST
1-800-344-7483
(TOLL FREE)
MISSOURI ONE CALL SYSTEM, INC.

THE SHOWN AND AS-BUILT COORDINATES OF THIS PROJECT ARE SHOWN IN THE OFFICE OF REITZ & JENS, INC. THE SIGNATURE AND SEAL APPEAR IN THE OFFICE DOCUMENT AND SHALL HAVE PRECEDENCE OVER ANY DIGITAL VERSION.

SHEET 4 OF 6