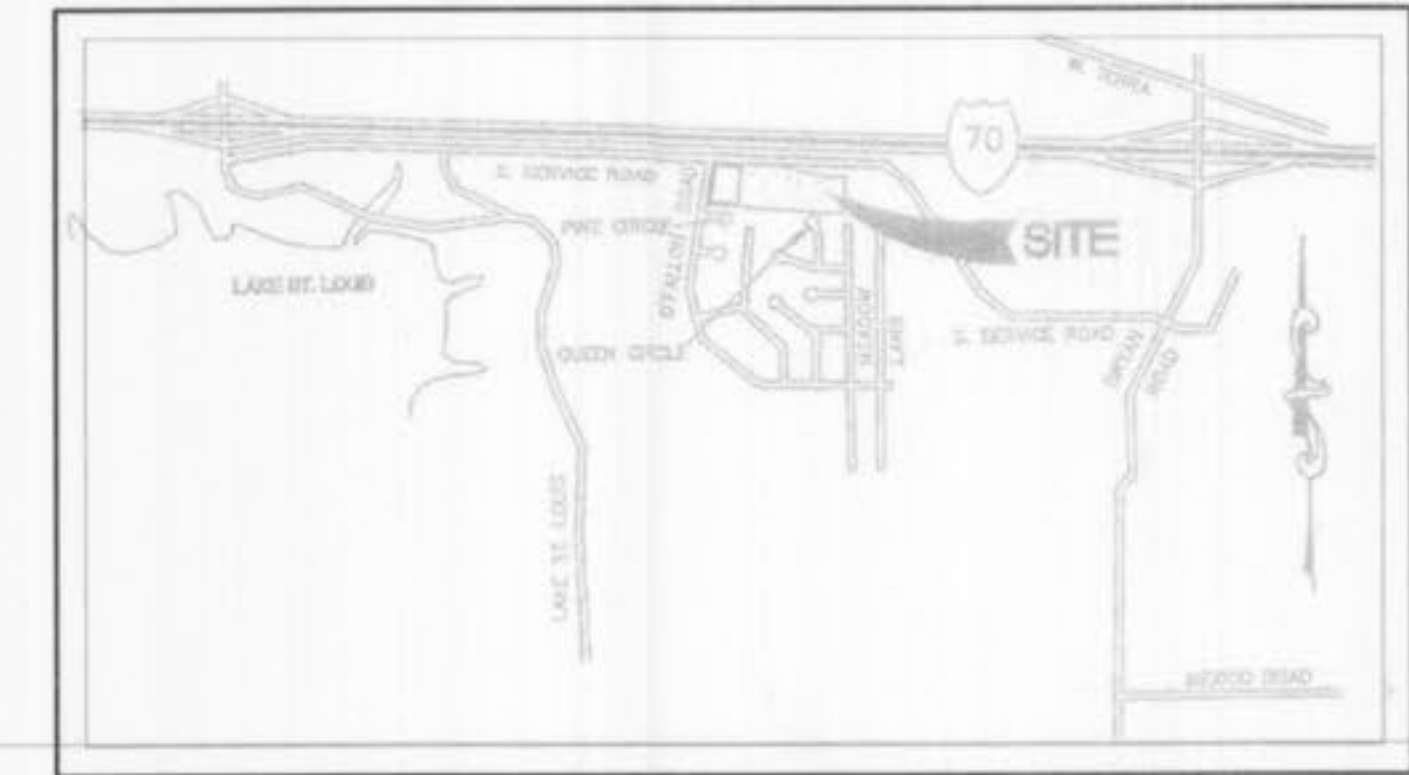
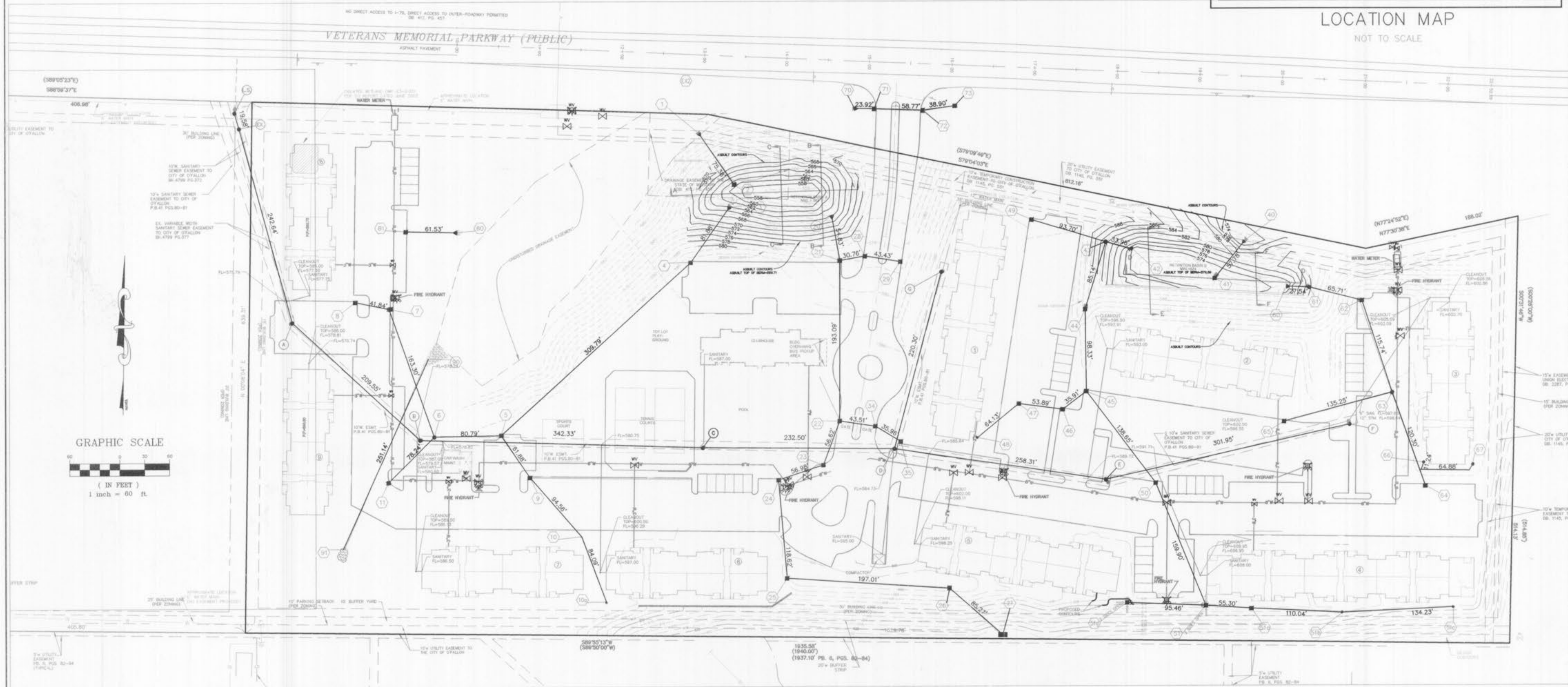


# AS-BUILT PLANS FOR O'FALLON LAKES

A TRACT OF LAND BEING PART OF U.S. SURVEY 1780,  
TOWNSHIP 47 NORTH, RANGE 2 EAST  
OF THE FIFTH PRINCIPAL MERIDIAN,  
CITY OF O'FALLON, ST. CHARLES COUNTY, MISSOURI



LOCATION MAP  
NOT TO SCALE



REFERENCE BENCHMARK: RM 459 ELEV 526.16  
CHISELED SQUARE IN THE SOUTHEAST CORNER OF THE LAKE ST. LOUIS BOULEVARD BRIDGE OVER THE SPILLWAY OF LAKE ST. LOUIS

SITE BENCHMARK: ELEV 589.63 MAG NAIL IN NORTH SHOULDER OF SOUTH SERVICE ROAD; OPPOSITE NORTHWEST PROPERTY CORNER, 11.2' EAST OF END OF GUARDRAIL, 3.2' SOUTH OF EDGE OF PAVEMENT.

### INDEX OF DRAWINGS

- 1 COVER AND SITE PLAN
- 2 SANITARY PROFILES
- 3 STORM PROFILES
- 4 STORM PROFILES

WE HEREBY CERTIFY TO THE FOLLOWING ENTITIES:  
The Industrial Development Authority of St. Charles County, Missouri  
CharterMax  
The Bank of New York Trust Company, N.A.  
Gundaker O'Fallon, LP - Series A  
RCC Credit Enhanced SLP, LP - Series A  
Related Capital Credit Enhanced Partners LP - Series A  
RCC Credit Facility, L.L.C.  
Street Title Guaranty Company  
U.S. Title Guaranty Company

### SEWER MEASUREMENTS

THE EXISTING SEWER LENGTHS, SIZES, FLOWLINES, DEPTHS OF STRUCTURES AND SEWERS AND LOCATIONS WITH RESPECT TO EXISTING OR PROPOSED EASEMENTS HAVE BEEN MEASURED. THE RESULTS OF THOSE MEASUREMENTS ARE SHOWN ON THIS SET OF FINAL MEASUREMENT PLANS.

ALL PUBLIC SEWERS ARE SHOWN DESIGNATED EXISTING OR PROPOSED EASEMENTS EXCEPT AS FOLLOWS:

SIGNED: DATE: \_\_\_\_\_

**GUNDAKER COMMERCIAL GROUP**  
 100 CHESTERFIELD BUSINESS PARKWAY, SUITE 300  
 CHESTERFIELD, MISSOURI 63005  
 636-728-5100

**PREPARED FOR:**  
 GUNDAKER COMMERCIAL GROUP  
 100 CHESTERFIELD BUSINESS PARKWAY, SUITE 300  
 CHESTERFIELD, MISSOURI 63005  
 636-728-5100

**DISCLAIMER OF RESPONSIBILITY**  
I hereby certify that the documents intended to be authorized by my seal are limited to this sheet, and I hereby disclaim any responsibility for all other drawings, specifications, schedules, reports or other documents or instruments relating to or intended to be used for any part or parts of the architecture or engineering project or survey.

Copyright 2007  
BCC Engineering Company, Inc.  
All Rights Reserved

REVISIONS
10-9-07 City Comments



**ENGINEERING  
PLANNING  
SURVEYING**

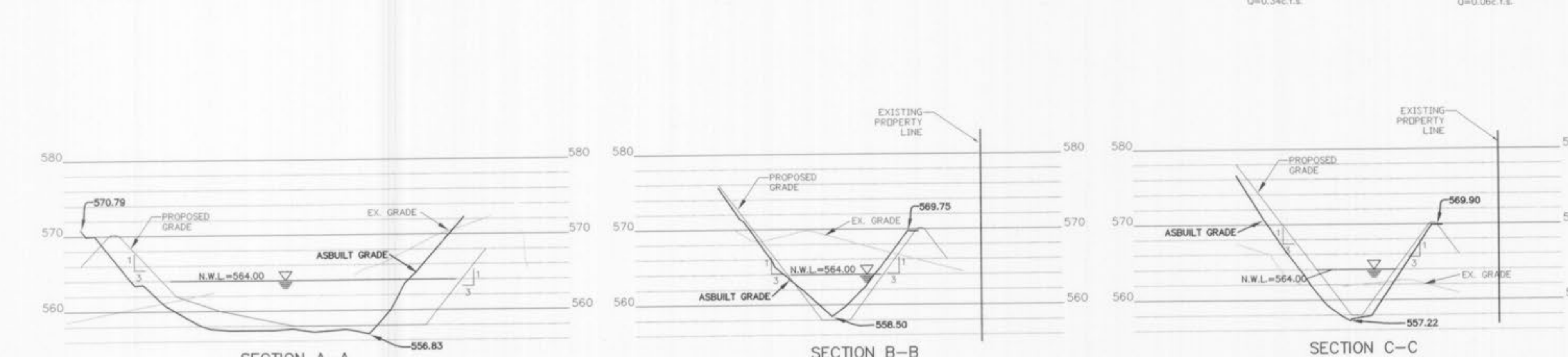
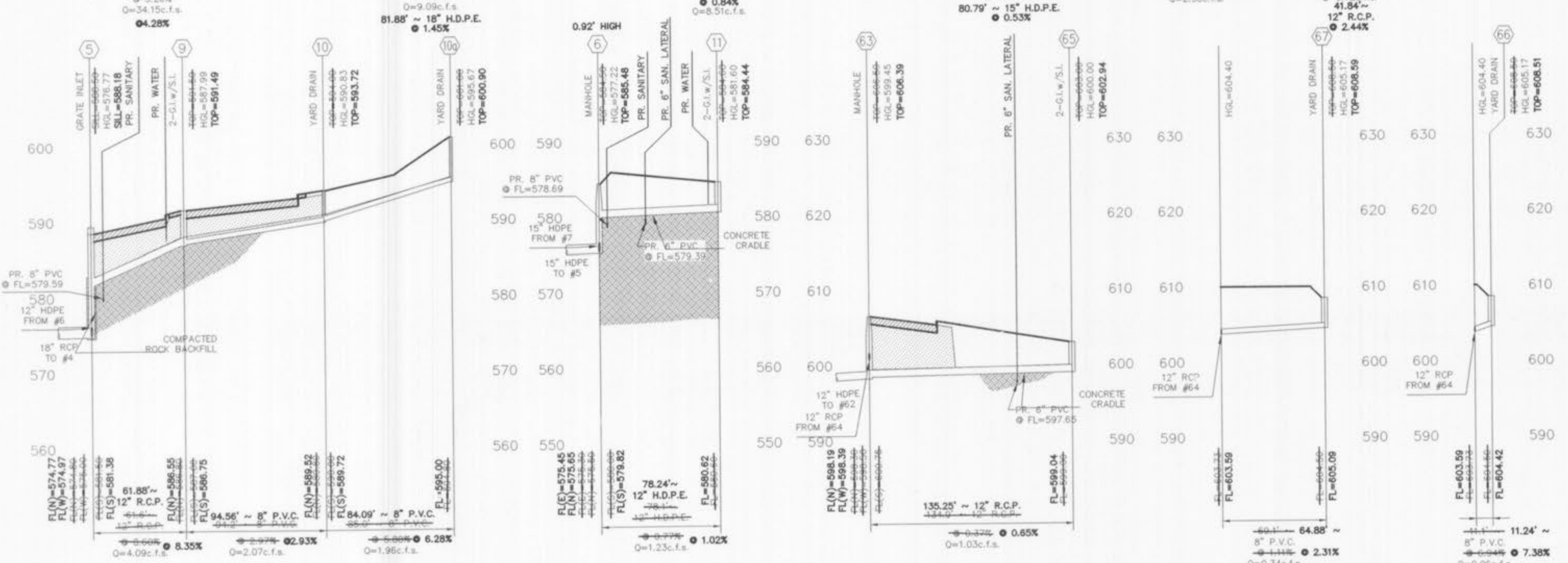
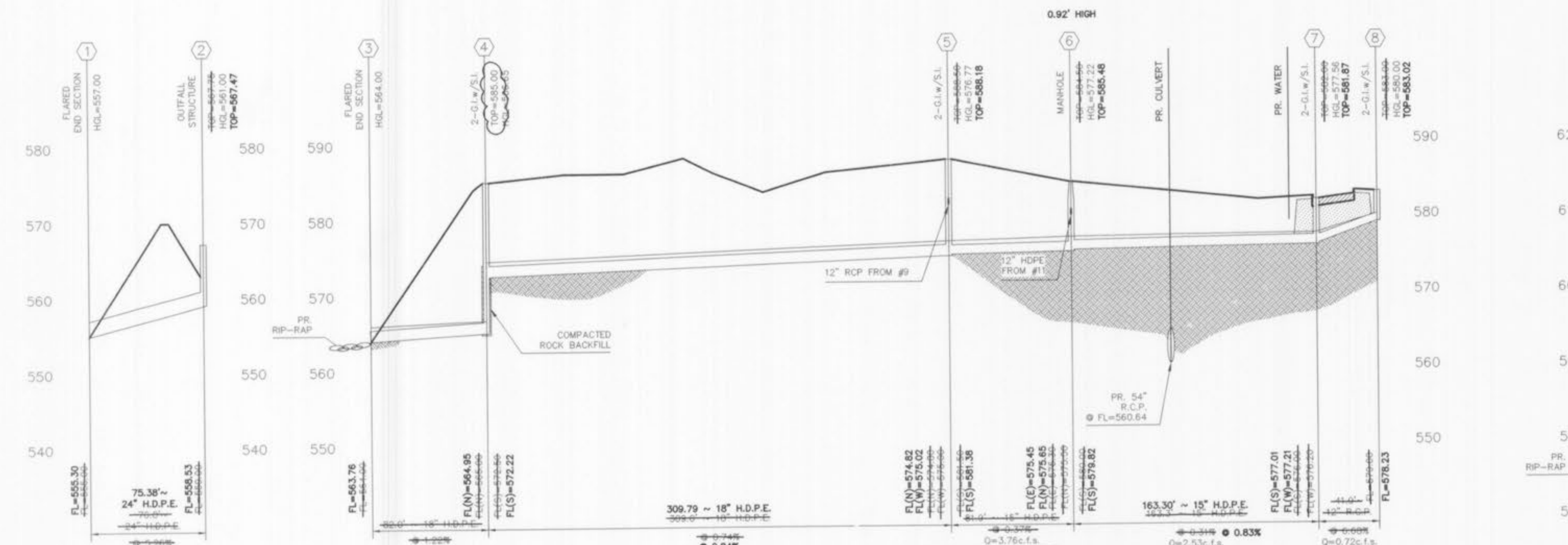
221 Point West Blvd.  
St. Charles, MO 63301  
636-928-5552  
FAX 928-1718

5-19-07	DATE
04-12986	PROJECT NUMBER
1	SHEET OF 4
12986-ASB.DWG	FILE NAME
BCC/SAZ	DRAWN
	DESIGNED
	CHECKED

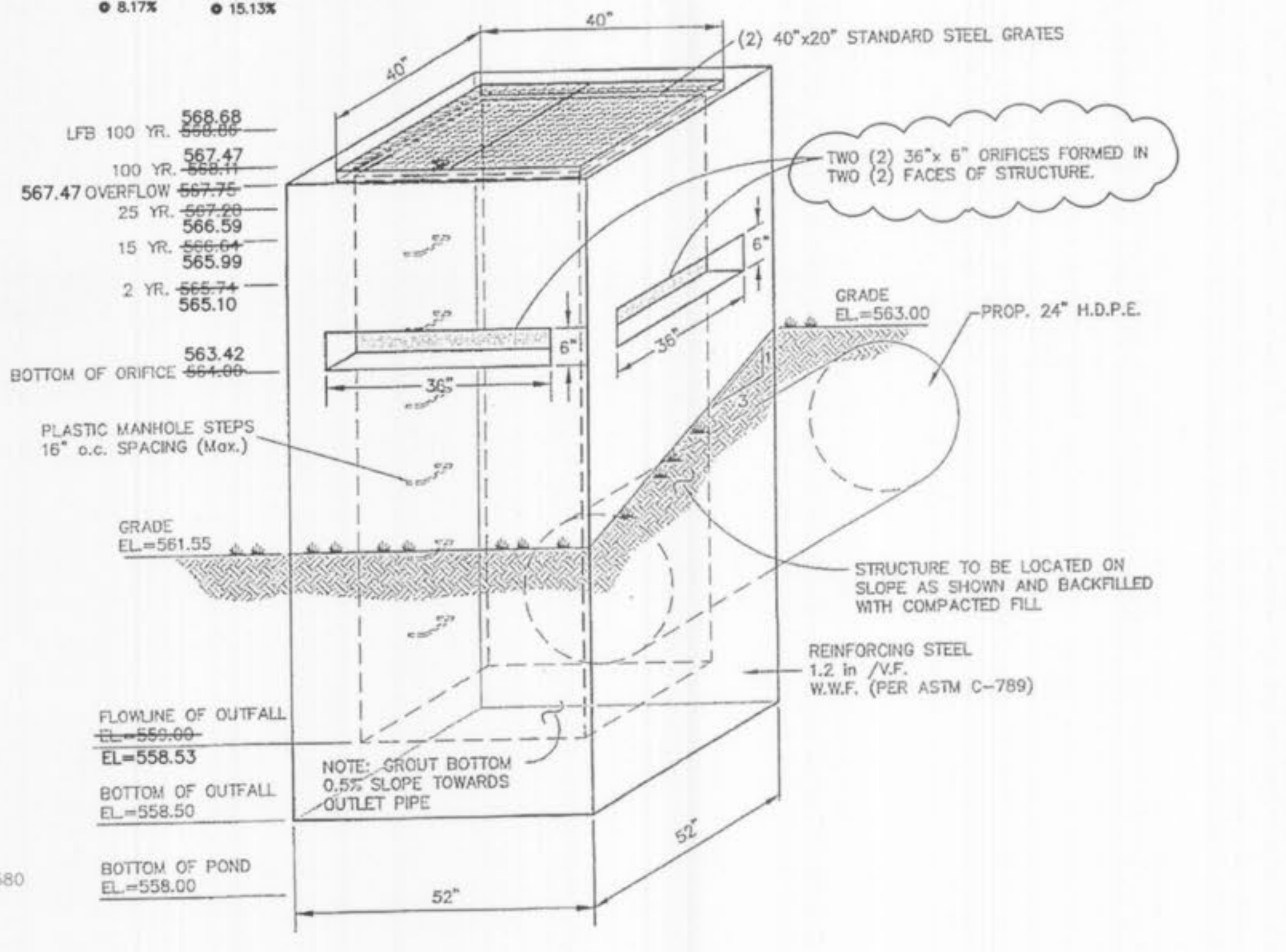
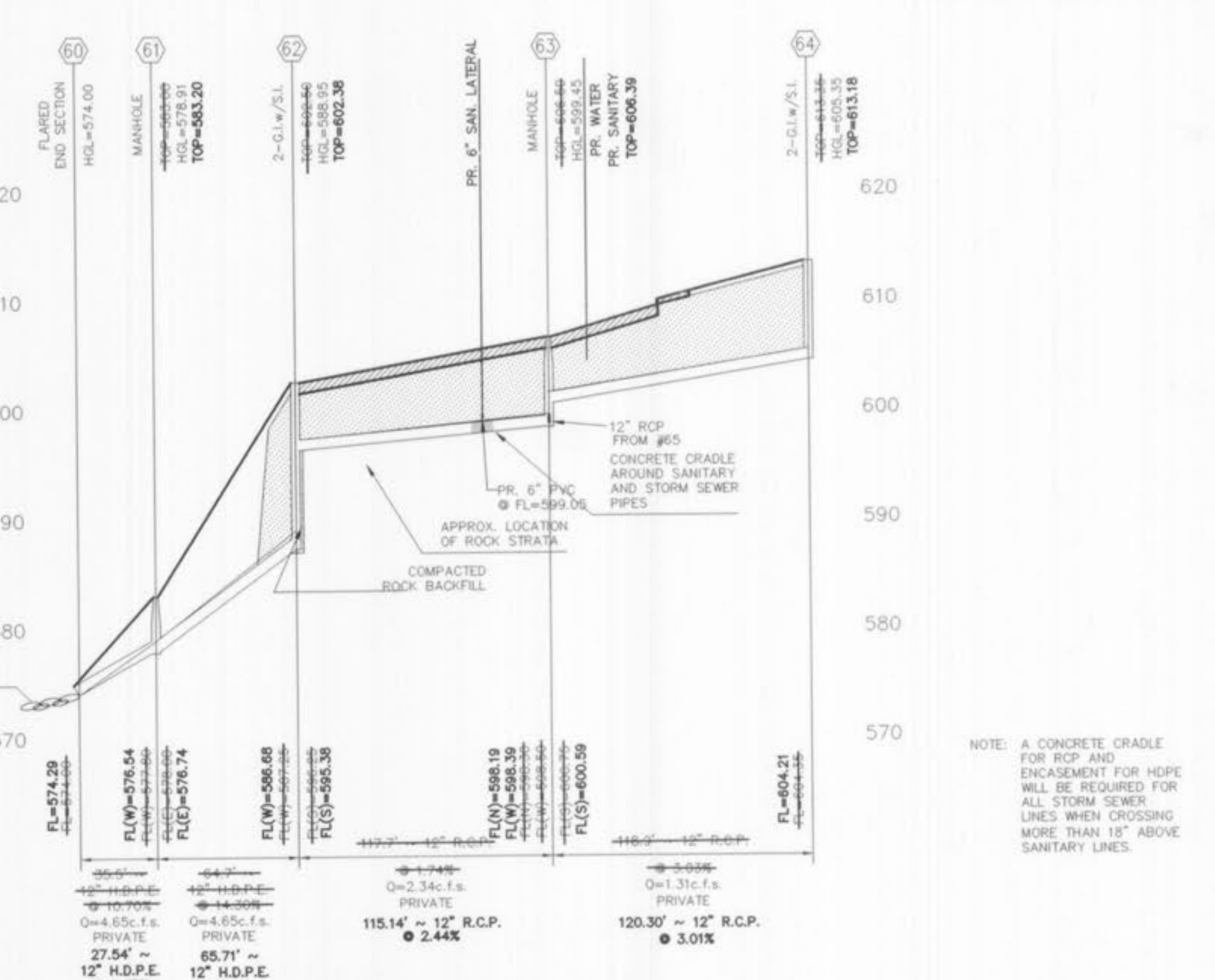








**RETENTION BASIN "A"**  
 SECTIONS THRU DETENTION BASINS  
 SCALE: 1" = 40' HORIZ.  
 1" = 10' VERT.



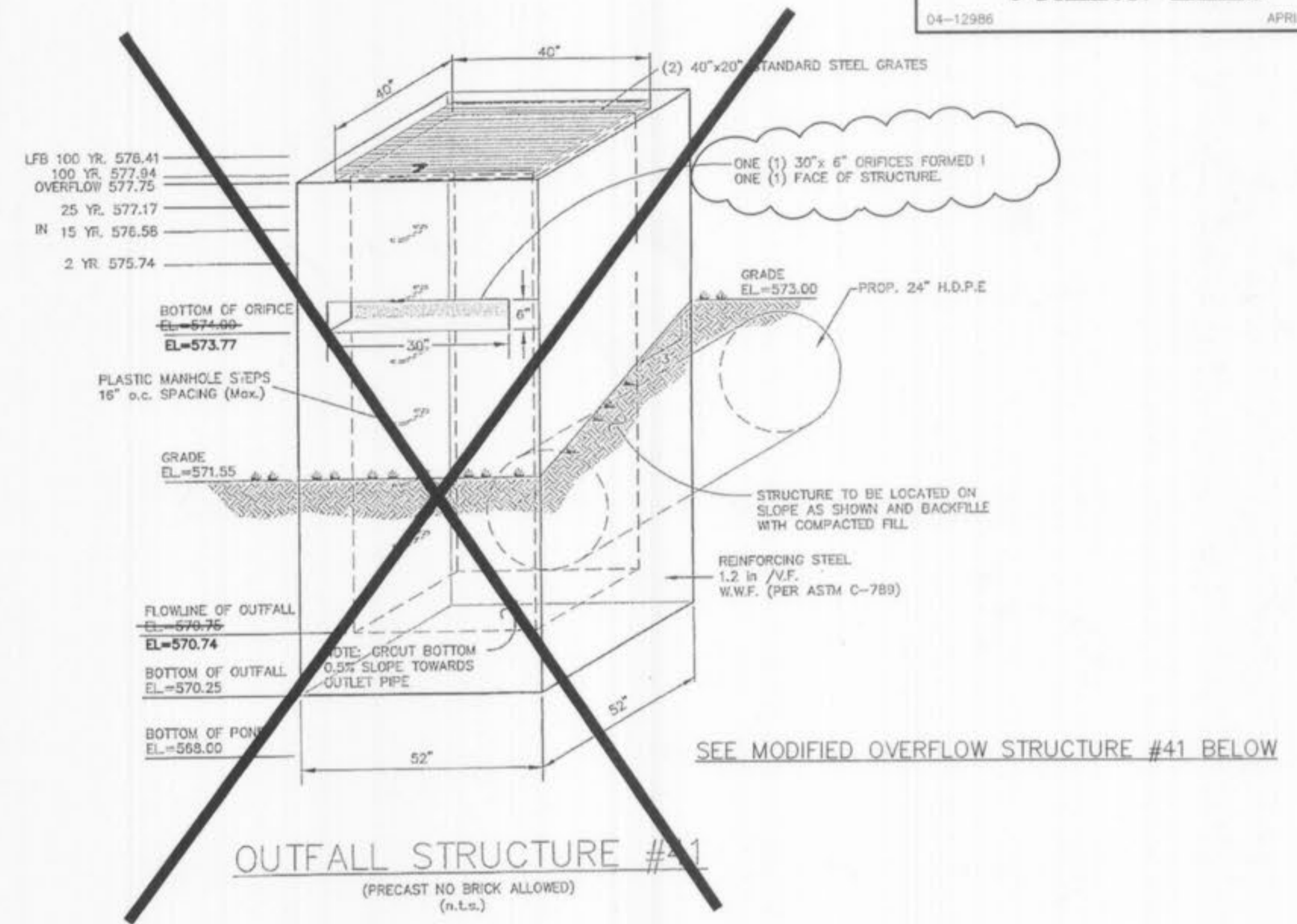
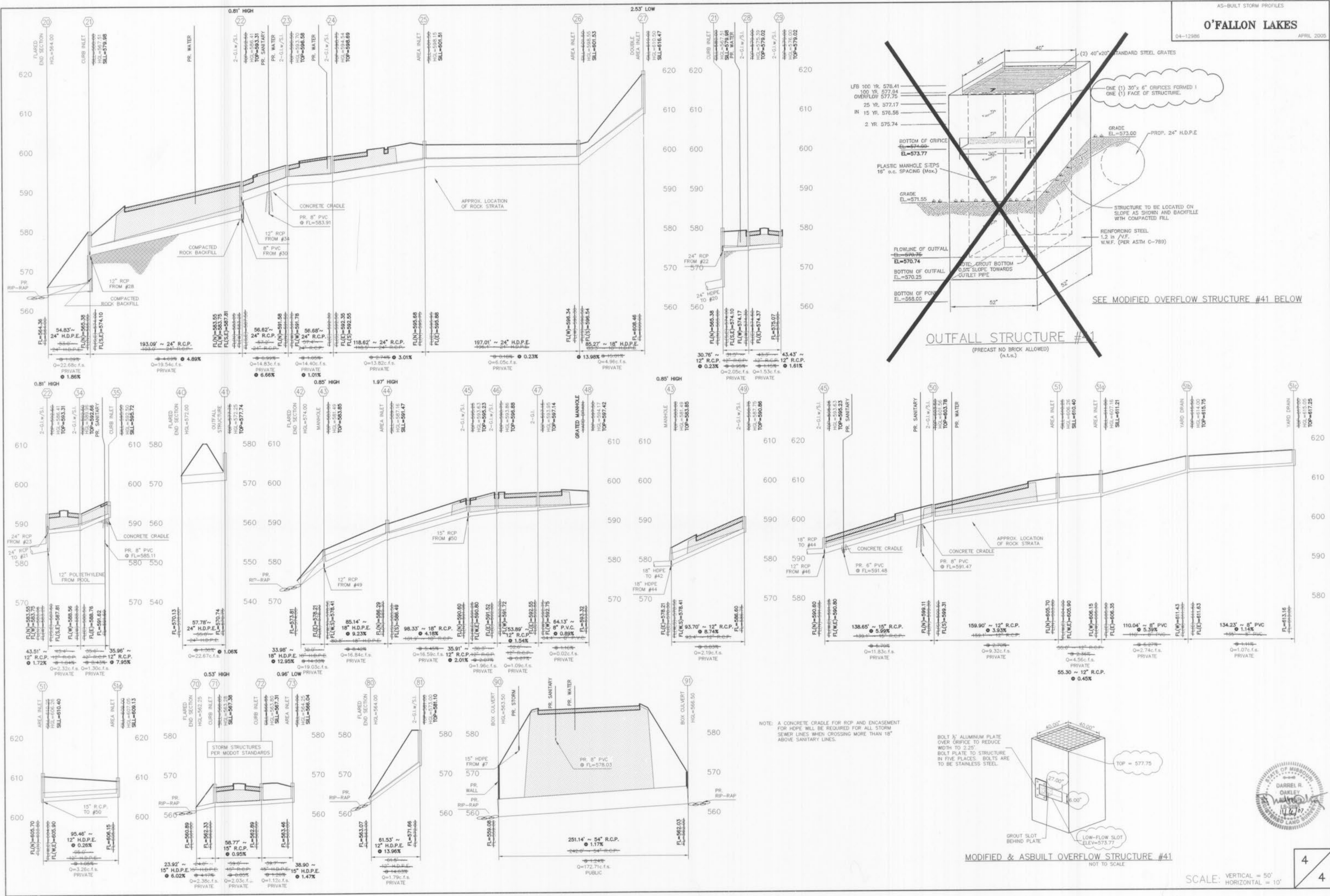
**OUTFALL STRUCTURE #2**  
 (PRECAST NO BRICK ALLOWED)  
 (n.t.s.)

NOTE: A CONCRETE CRADLE FOR RCP AND ENCASUREMENT FOR HDPE WILL BE REQUIRED FOR ALL STORM SEWER LINES WHEN CROSSING MORE THAN 18" ABOVE SANITARY LINES.



SCALE: VERTICAL = 50'  
 HORIZONTAL = 10'

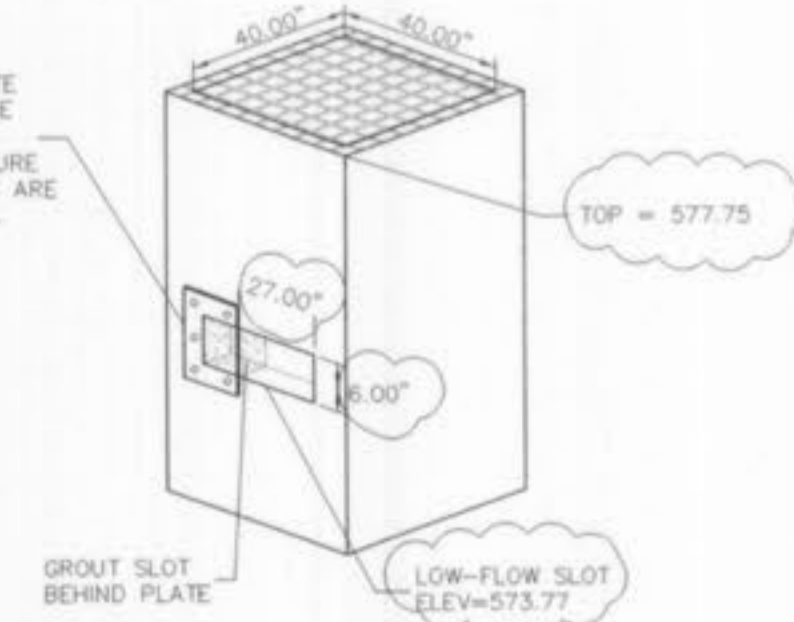




**OUTFALL STRUCTURE #41**  
 (PRECAST NO BRICK ALLOWED)  
 (n.l.s.)

**MODIFIED & ASBUILT OVERFLOW STRUCTURE #41**  
 NOT TO SCALE

NOTE: A CONCRETE CRADLE FOR RCP AND ENCASUREMENT FOR HDPE WILL BE REQUIRED FOR ALL STORM SEWER LINES WHEN CROSSING MORE THAN 18" ABOVE SANITARY LINES.



SCALE: VERTICAL = 5'  
 HORIZONTAL = 10'