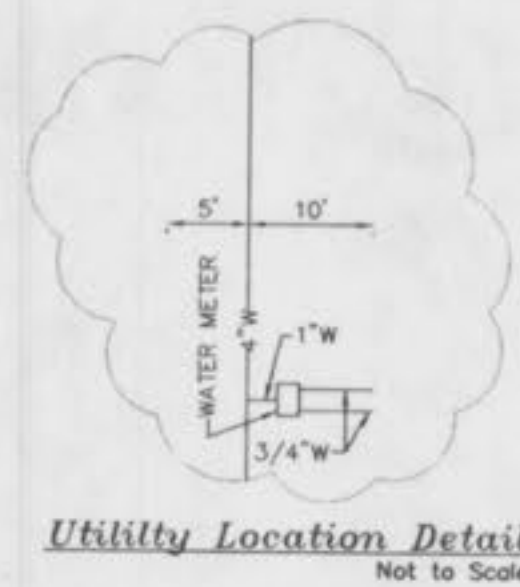


SANITARY SEWER AS-BUILTS
O'FALLON COMMONS
 A TRACT OF LAND BEING PART OF
 U.S. SURVEY 67
 TOWNSHIP 46 NORTH, RANGE 3 EAST
 OF THE FIFTH PRINCIPAL MERIDIAN
 ST. CHARLES COUNTY, MISSOURI



N / F
 CAPLACO TWENTY-NINE, INC.
 BK. 1871 PG. 1232

ROYALL SPRINGS PLAT ONE
 PB. 31 PG. 70-71

N / F
 ROBIN DRIVE INVESTMENTS, L.L.C.
 BK. 1896 PG. 2084

N / F
 CAPLACO TWENTY-NINE, INC.
 BK. 1871 PG. 1232

PREPARED FOR: WOLFF PROPERTIES
 225 SOUTH MERAMEC AVENUE
 SUITE 301
 ST. LOUIS, MISSOURI 63105
 (314) 727-9800

DISCLAIMER OF RESPONSIBILITY
 I hereby certify that the documents intended to be authorized by my seal are those of my own hand and I hereby disclaim any responsibility for all other drawings, specifications, calculations, reports or other documents or instruments relating to or intended to be used for any part or parts of the architectural or engineering project or service.

Copyright 2000
 Bax Engineering Company, Inc.
 All Rights Reserved

REVISIONS
4-5-99 CITY COMMENTS
4-9-99 REVISIONS
4-26-99 REVISIONS
5-6-99 ADDENDUM #1
5-25-99 ADDENDUM #2
6-15-99 DUCKETT COMMENTS
6-29-99 ADDENDUM #3
8-26-99 HYDRANT/CURB CUT
10-15-99 ADDENDUM #4
10-22-99 ADDENDUM #5

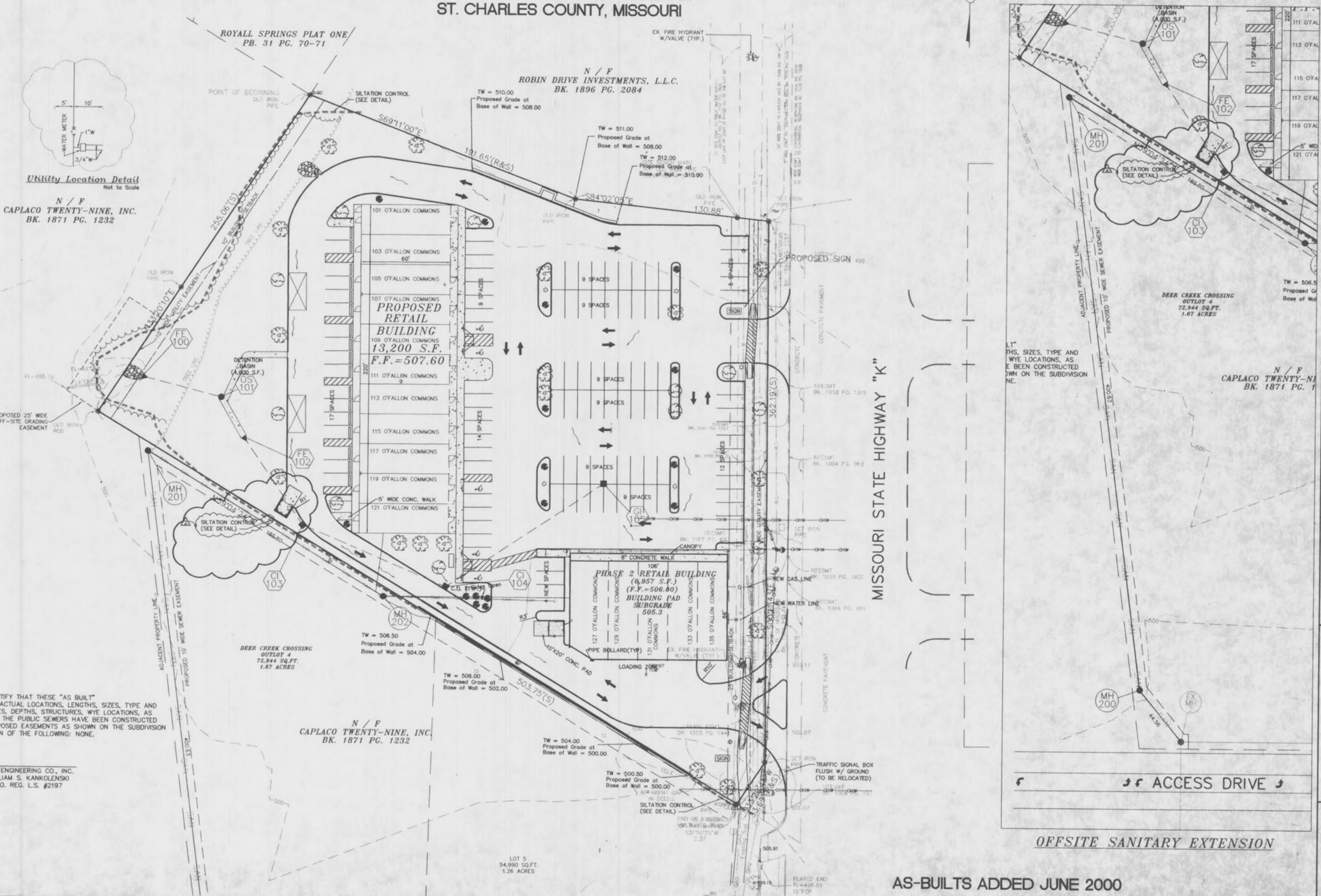
BAX
 ENGINEERING
 PLANNING
 SURVEYING
 1852 South Cloverleaf Drive
 St. Peters, MO. 63376-8445
 314-928-5552
 FAX 928-1718

01-04-99
 DATE
 97-9265
 PROJECT NUMBER
 CS OF 8
 SHEET OF
 9265CON.dwg
 FILE NAME
 SCL
 DRAWN CHECKED

AS OF JUNE 2000, I CERTIFY THAT THESE "AS BUILT" DRAWINGS INDICATE THE ACTUAL LOCATIONS, LENGTHS, SIZES, TYPE AND CLASS OF PIPE, FLOWLINES, DEPTHS, STRUCTURES, WYE LOCATIONS, AS APPROPRIATE, AND THAT THE PUBLIC SEWERS HAVE BEEN CONSTRUCTED WITHIN EXISTING OR PROPOSED EASEMENTS AS SHOWN ON THE SUBDIVISION PLAT WITH THE EXCEPTION OF THE FOLLOWING: NONE.

BAX ENGINEERING CO., INC.
 WILLIAM S. KANKOLENSKI
 MO. REG. L.S. #2197

E:\proj\9265CON.dwg Mon Jun 19 15:08:23 2000 MSK

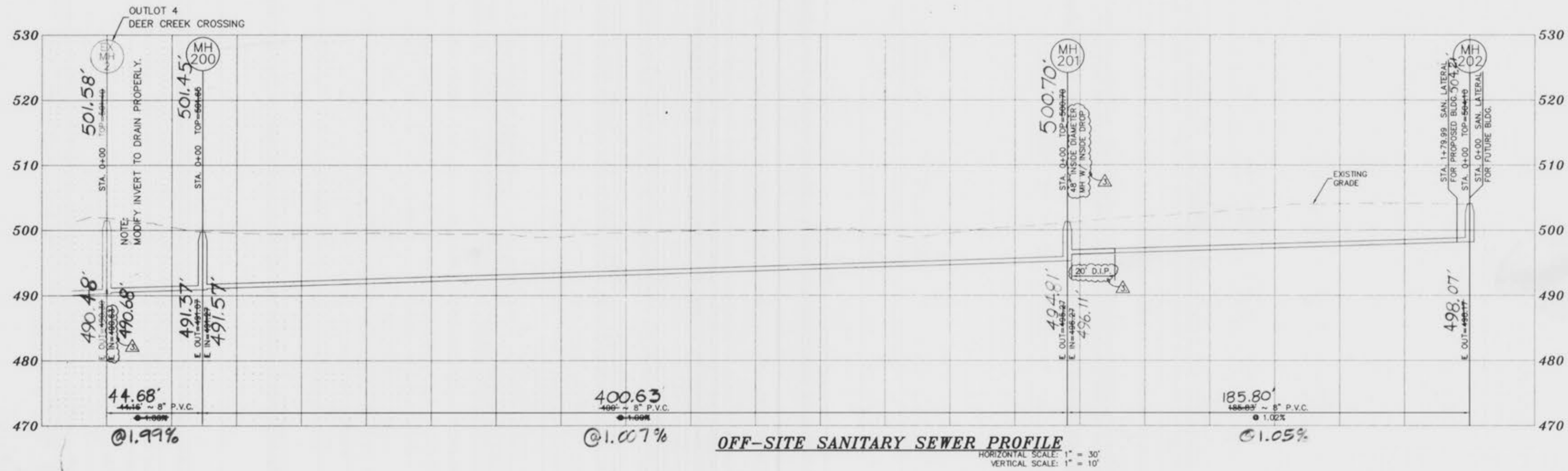
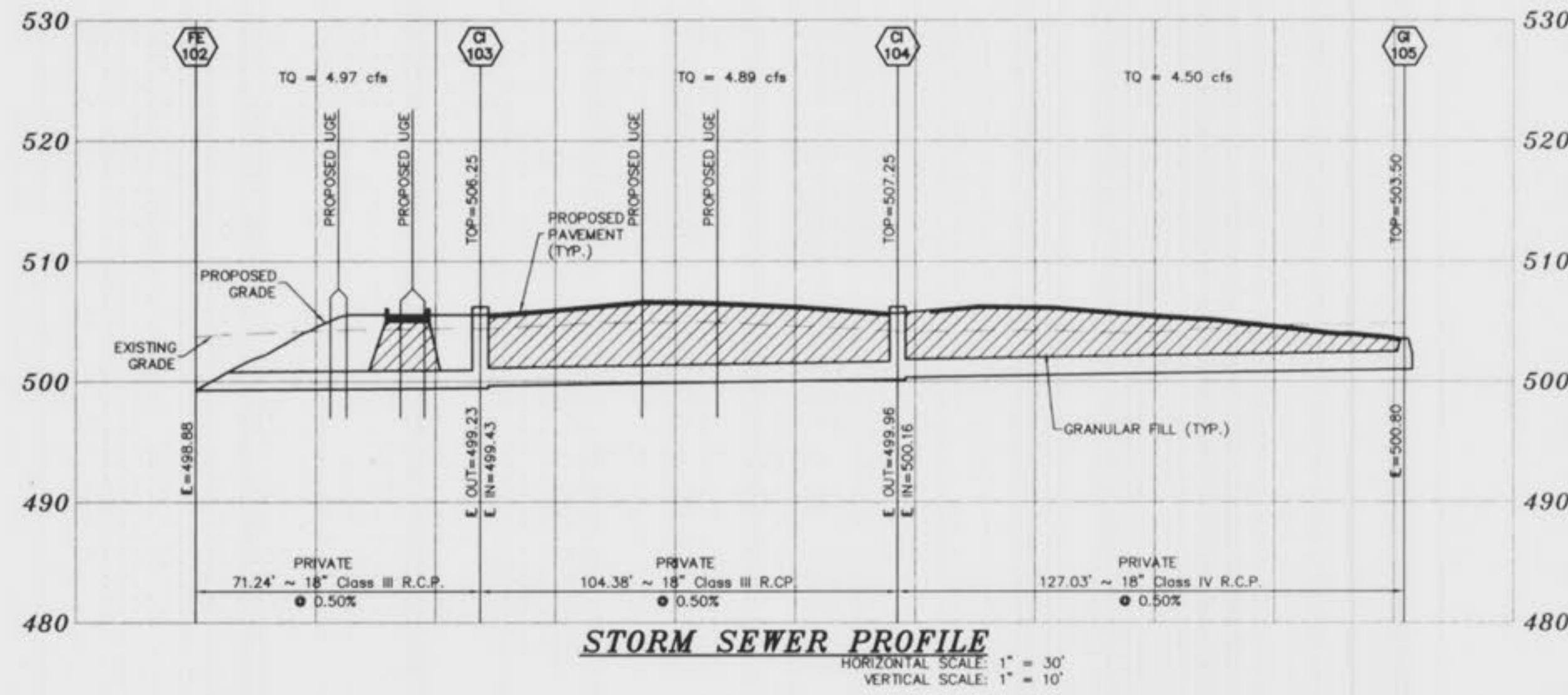


ACCESS DRIVE

OFFSITE SANITARY EXTENSION

AS-BUILTS ADDED JUNE 2000

A PROFILE SHEET FOR O'FALLON COMMONS



PREPARED FOR: WOLFF PROPERTIES
225 SOUTH MERAMEC AVENUE
SUITE 301
ST. LOUIS, MISSOURI 63105
(314) 727-9800

DISCLAIMER OF RESPONSIBILITY
I hereby specify that the documents intended to be incorporated by my seal are limited to this sheet, and I hereby disclaim any responsibility for all other drawings, specifications, estimates, reports or other documents or instruments existing in or intended to be used for any part or parts of the architectural or engineering project or survey.

Copyright 1997
B&E Engineering Company, Inc.
All Rights Reserved

REVISIONS	
4-9-99	REVISIONS
4-26-99	REVISIONS
5-25-99	MODOT COMMENTS
6-15-99	ADDENDUM #3



**ENGINEERING
PLANNING
SURVEYING**

1052 South Cloverleaf Drive
St. Peters, MO. 63376-8445
314-928-5552
FAX 928-1718

01-04-99
DATE
97-9265
PROJECT NUMBER
C6 OF 8
SHEET OF
9265CON.dwg
FILE NAME
SCL
DRAWN CHECKED

AS-BUILTS ADDED JUNE 2000

View: 9265CON.dwg (9265CON.dwg) Thu Jul 15 10:31:13 1999 - station 34.RLU