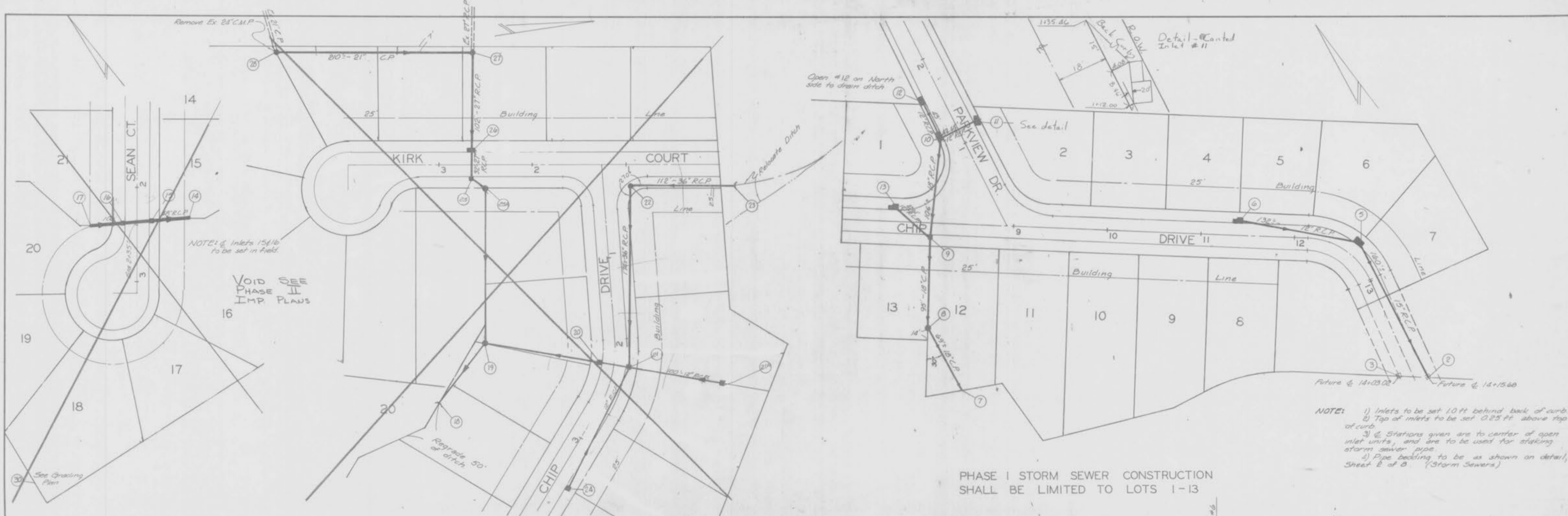


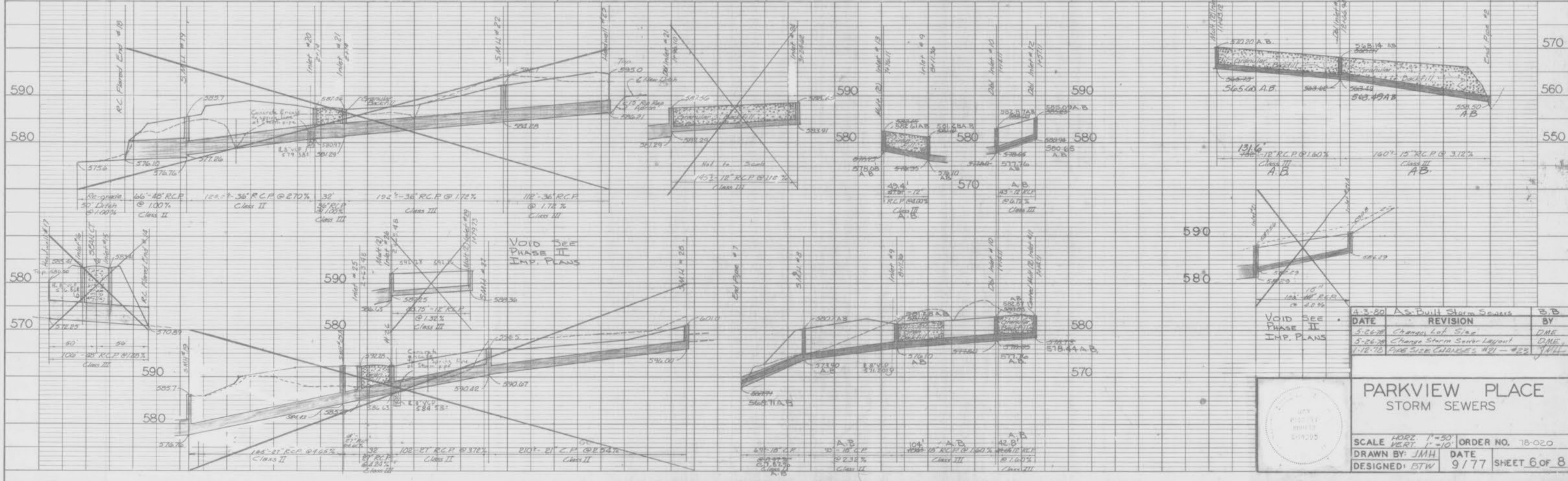
| | |
|-----------|--|
| DATE | |
| BY | |
| PLAN | |
| NOTE BOOK | |
| NO. | |



NOTE: 1) Inlets to be set 10 ft behind back of curb
 2) Top of inlets to be set 0.25 ft above top of curb
 3) Stations given are to center of open inlet units, and are to be used for staking storm sewer pipe
 4) Pipe bedding to be as shown on detail, Sheet B of B (Storm Sewers)

PHASE I STORM SEWER CONSTRUCTION SHALL BE LIMITED TO LOTS 1-13

| | |
|-----------|--|
| DATE | |
| BY | |
| PROFILE | |
| NOTE BOOK | |
| NO. | |



| DATE | REVISION | BY |
|---------|----------------------------|-----|
| 4-3-80 | As-Built Storm Sewers | B.B |
| 5-26-88 | Change Lot Size | DME |
| 5-26-88 | Change Storm Sewer Layout | DME |
| 1-18-90 | Fix Size Changes #21 - #23 | JMH |

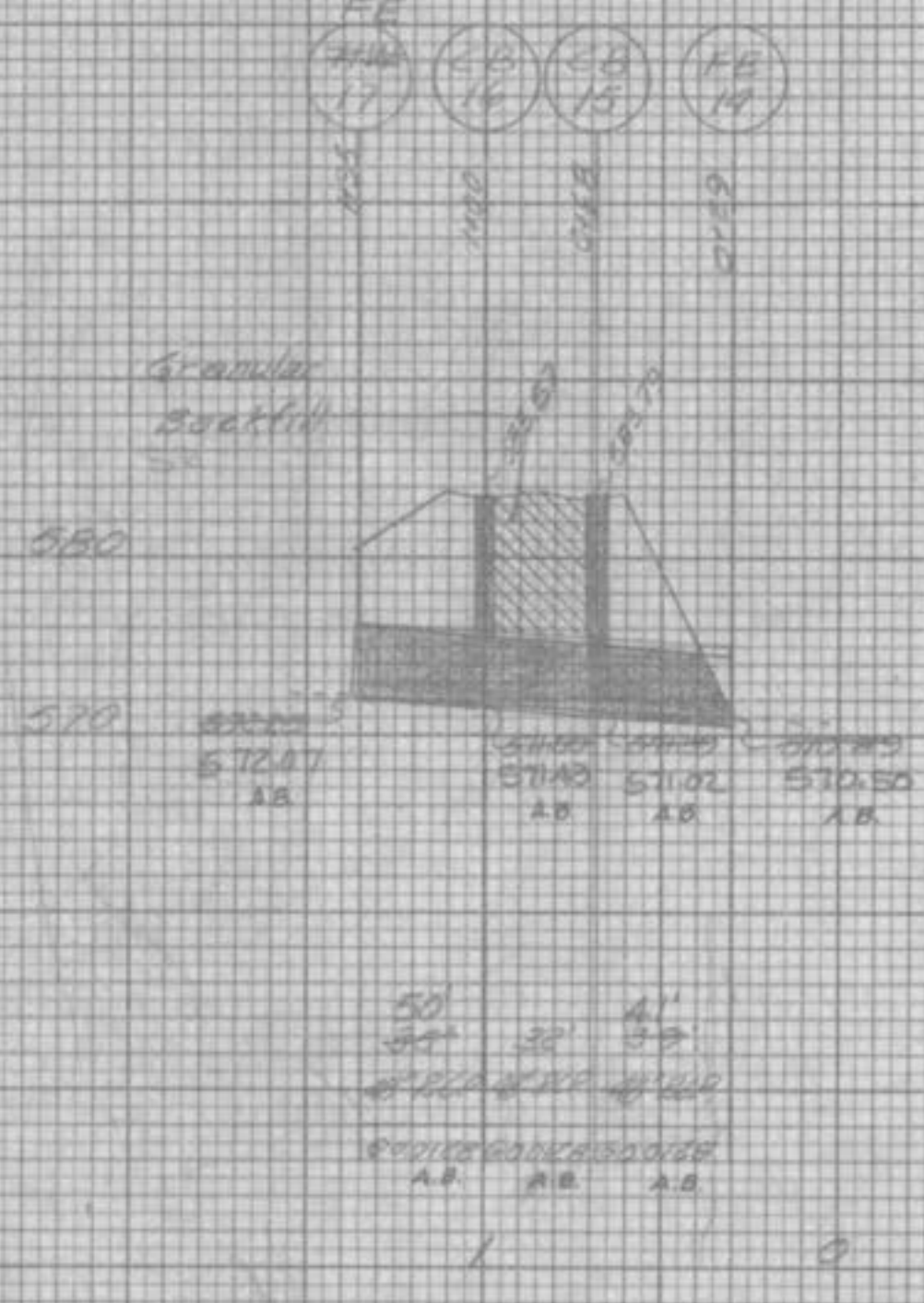
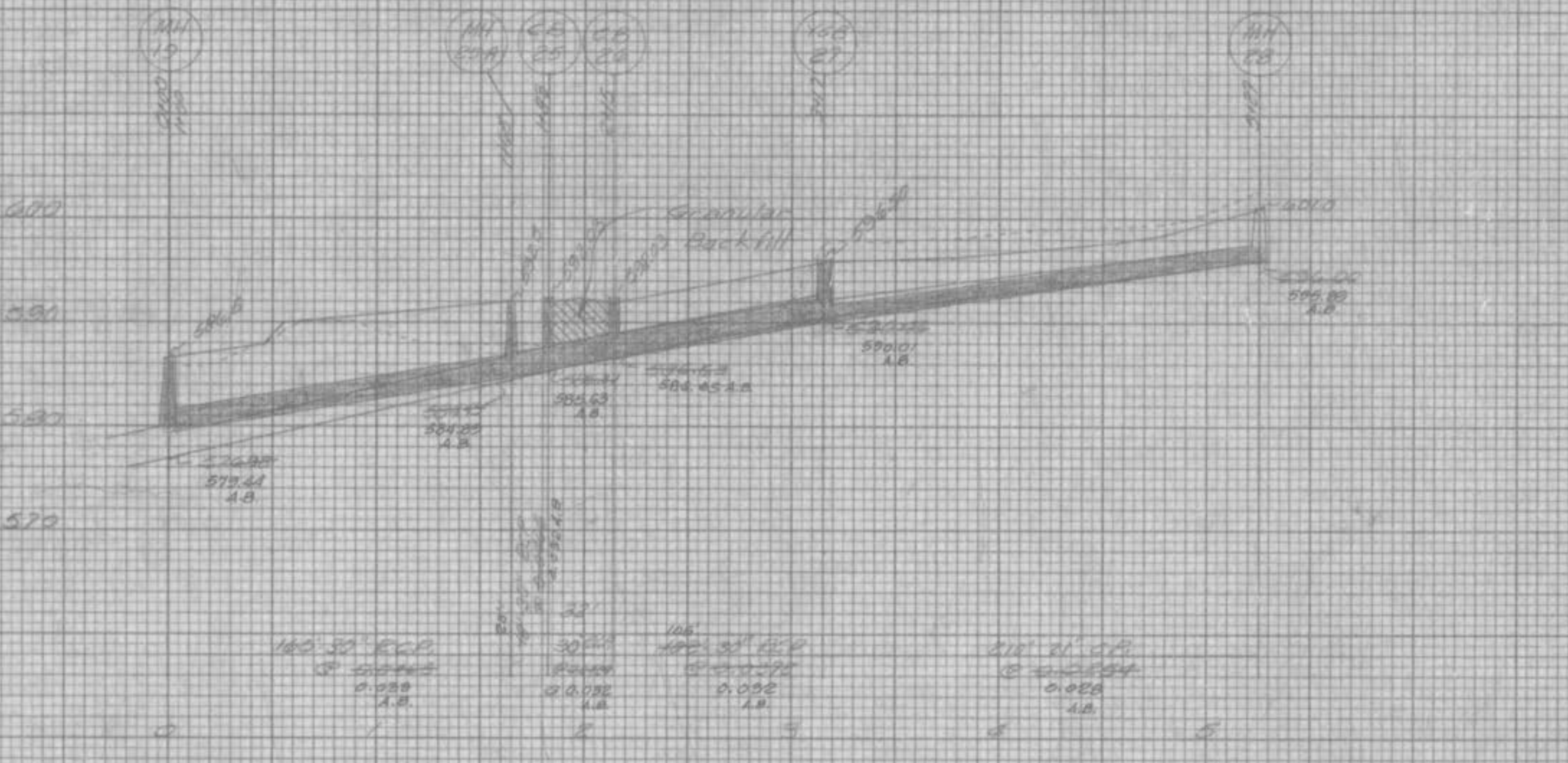
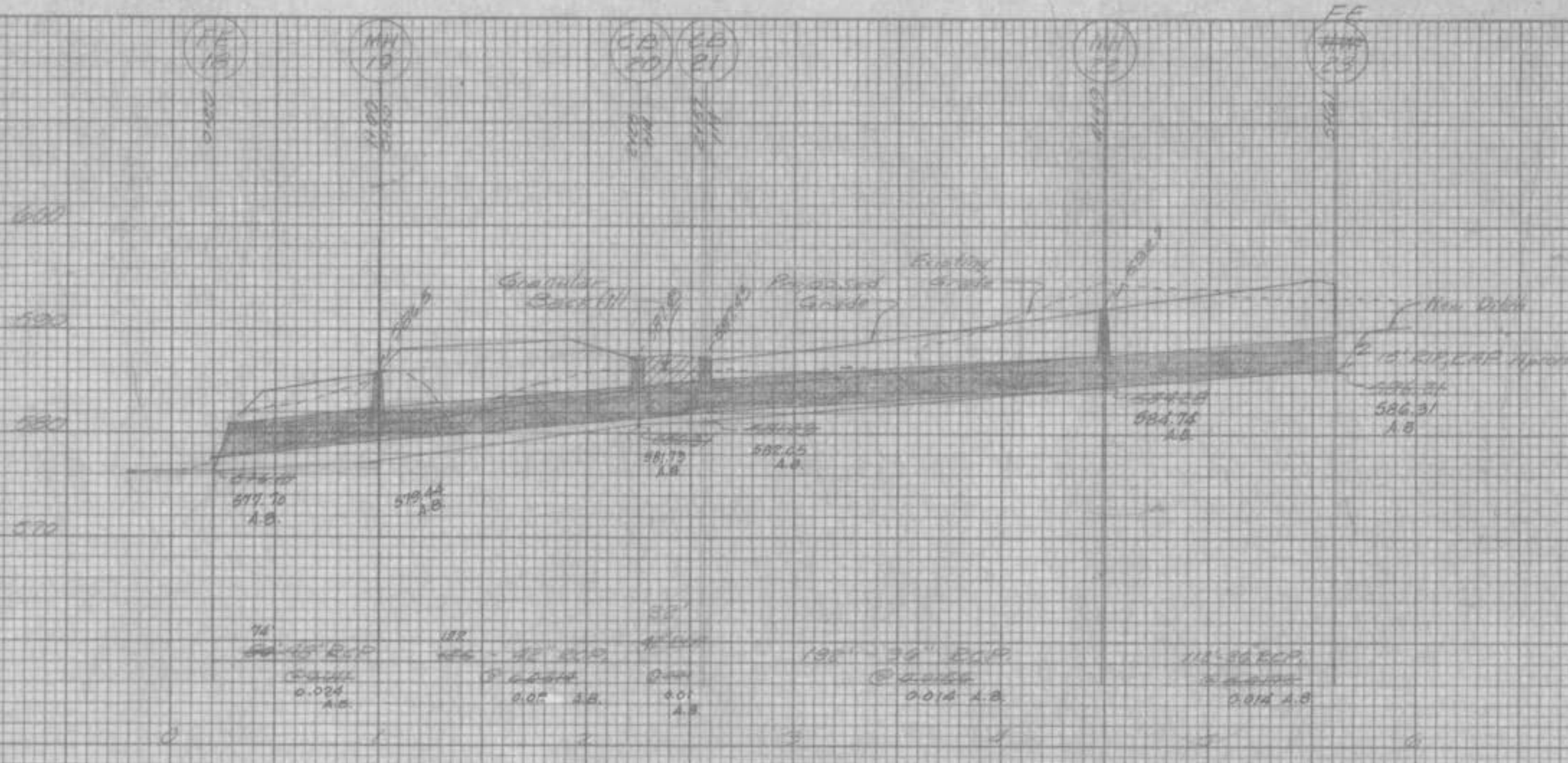
PARKVIEW PLACE STORM SEWERS

SCALE: HORIZ. 1"=30'
 VERT. 1"=10'
 ORDER NO. 18-020
 DRAWN BY: JMH
 DATE: 9/77
 DESIGNED: BTW
 SHEET 6 OF 8

Storm Sewer Profiles
 Parkview Place
 June 13 1960
 Rev after as built (A.A.)

| | |
|-----------------|--|
| DATE | |
| BY | |
| NO. | |
| FINAL SURVEY | |
| ADJUSTED | |
| FLAT TO | |
| TEMPLATE | |
| DATE | |
| BY | |
| NO. | |
| ORIGINAL SURVEY | |
| ADJUSTED | |
| FLAT TO | |
| TEMPLATE | |
| DATE | |
| BY | |
| NO. | |

| | |
|-----------------|--|
| DATE | |
| BY | |
| NO. | |
| ORIGINAL SURVEY | |
| ADJUSTED | |
| FLAT TO | |
| TEMPLATE | |
| DATE | |
| BY | |
| NO. | |



K-E PLATE 3, CROSS SECTION
 ENGINEERS & ARCHITECTS
 48 7000 BIRCH CREEK

PROPERTY OF
 CITY OF DENVER
 BUILDING DEPARTMENT
 PARKVIEW PLACE
 STORM SEWER PROFILES
 PL. 3/10